

Data Path : Z:\pestpcbsrv\HPCHEM1\ECD_S\Data\PS071425\
 Data File : PS031028.D
 Signal(s) : Signal #1: ECD1A.ch Signal #2: ECD2B.ch
 Acq On : 14 Jul 2025 19:56
 Operator : AR\AJ
 Sample : HSTDCCC750
 Misc :
 ALS Vial : 3 Sample Multiplier: 1

Instrument :
 ECD_S
 ClientSampleId :
 HSTDCCC750

Integration File signal 1: autoint1.e
 Integration File signal 2: autoint2.e
 Quant Time: Jul 15 01:31:54 2025
 Quant Method : Z:\pestpcbsrv\HPCHEM1\ECD_S\Method\PS071125.M
 Quant Title : 8080.M
 QLast Update : Mon Jul 14 05:51:06 2025
 Response via : Initial Calibration
 Integrator: ChemStation

Volume Inj. : 1 µl
 Signal #1 Phase : ZB-MR2 Signal #2 Phase: ZB-MR2
 Signal #1 Info : 30M x 0.32mm x0.5 Signal #2 Info : 30M x 0.32mm x 0.25µm

	Compound	RT#1	RT#2	Resp#1	Resp#2	ng/ml	ng/ml

System Monitoring Compounds							
4) S	2,4-DCAA	7.330	7.767	2764.0E6	656.8E6	698.839	633.978
Target Compounds							
1) T	Dalapon	2.697	2.706	3661.8E6	1658.0E6	601.110	583.218
2) T	3,5-DICHL...	6.491	6.714	3360.9E6	909.6E6	641.556	586.725
3) T	4-Nitroph...	7.130	7.300	982.6E6	1038.9E6	727.830	595.749
5) T	DICAMBA	7.520	7.970	10201.6E6	3952.8E6	650.163	610.343
6) T	MCP P	7.701	8.068	609.3E6	132.5E6	66.223	61.999
7) T	MCPA	7.850	8.317	750.6E6	194.3E6	68.820	60.615
8) T	DICHLORPROP	8.232	8.689	2247.1E6	912.9E6	659.921	600.901
9) T	2,4-D	8.464	9.025	2241.6E6	1030.3E6	728.151	606.234
10) T	Pentachlo...	8.771	9.549	35501.4E6	24693.5E6	706.332	640.807
11) T	2,4,5-TP ...	9.350	9.930	13400.0E6	9188.6E6	720.013	626.105
12) T	2,4,5-T	9.645	10.357	12076.6E6	8792.8E6	793.816	628.428
13) T	2,4-DB	10.221	10.924	1841.6E6	728.9E6	848.362	616.044 #
14) T	DINOSEB	11.436	11.309	9487.1E6	6887.7E6	719.595	606.763
15) T	Picloram	11.248	12.419	12808.0E6	15566.5E6	878.950	662.950
16) T	DCPA	11.733	12.352	17997.6E6	14397.2E6	751.870	638.401

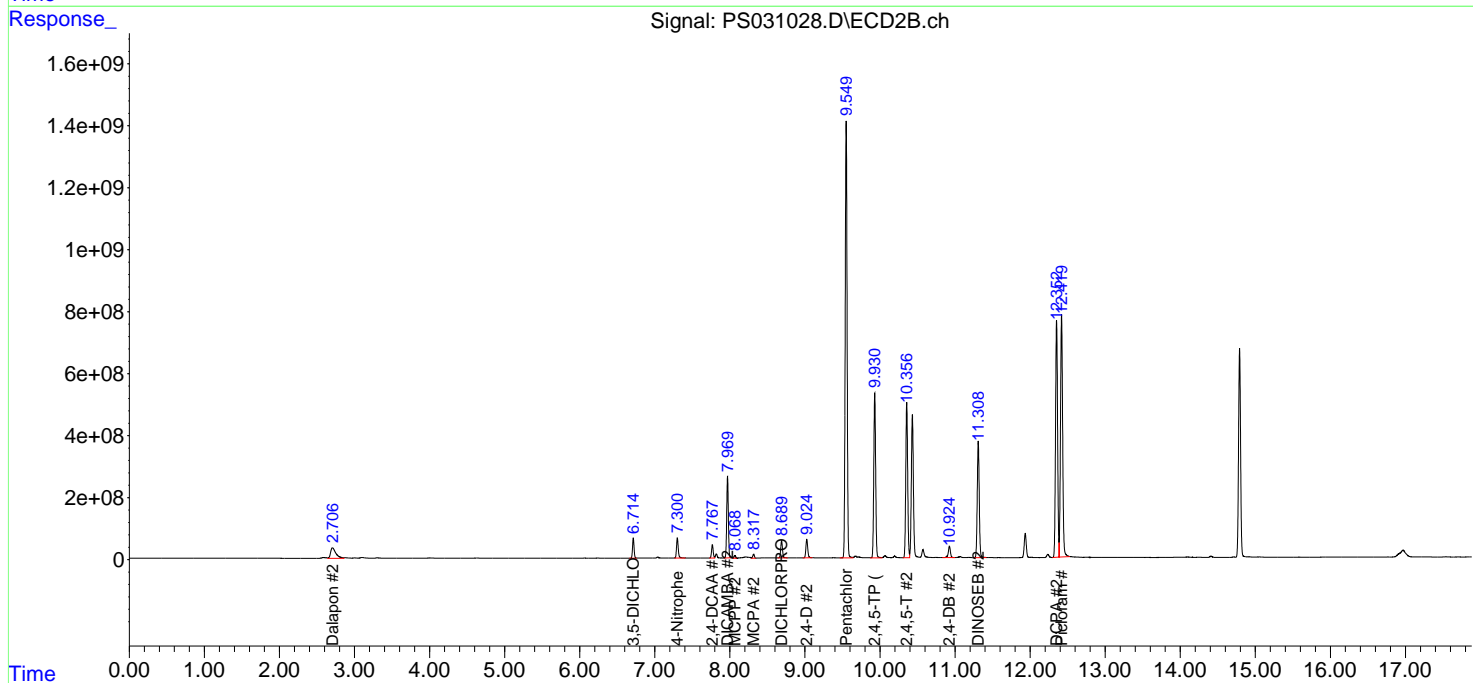
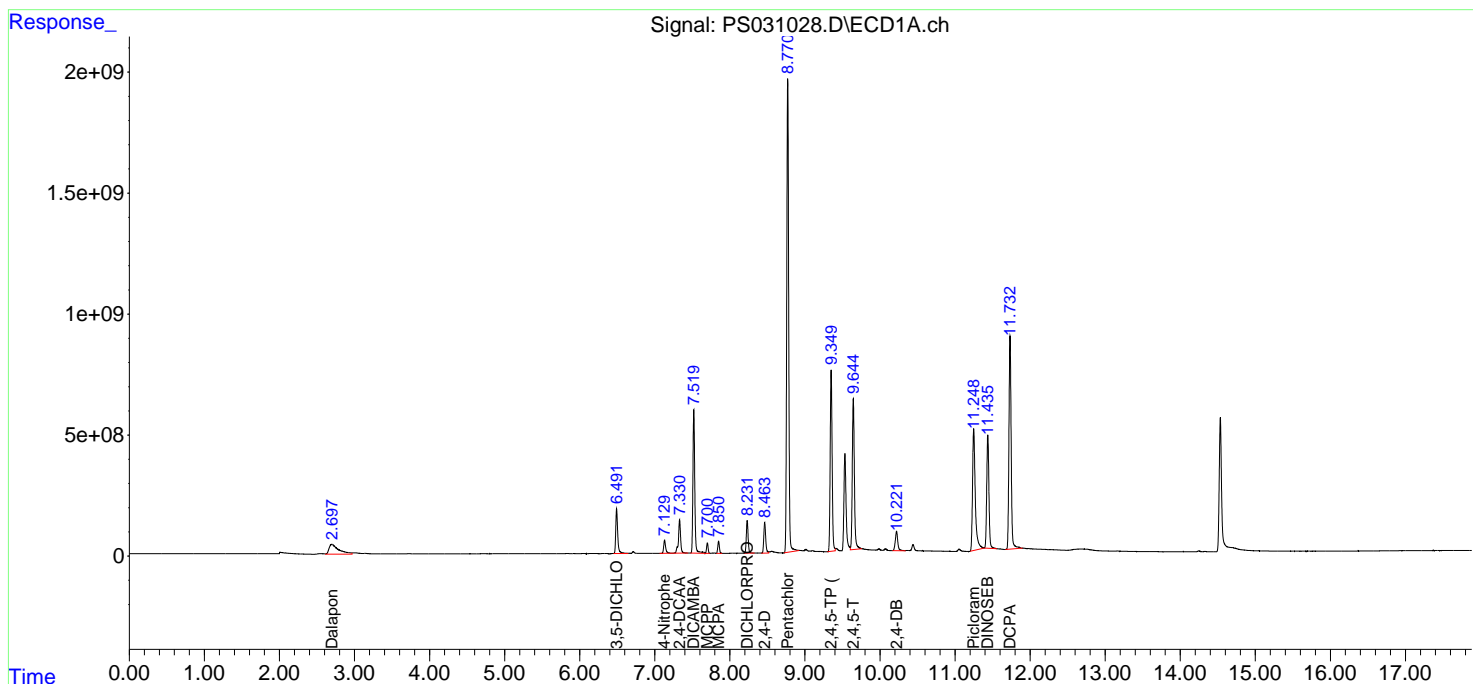
(f)=RT Delta > 1/2 Window (#)=Amounts differ by > 25% (m)=manual int.

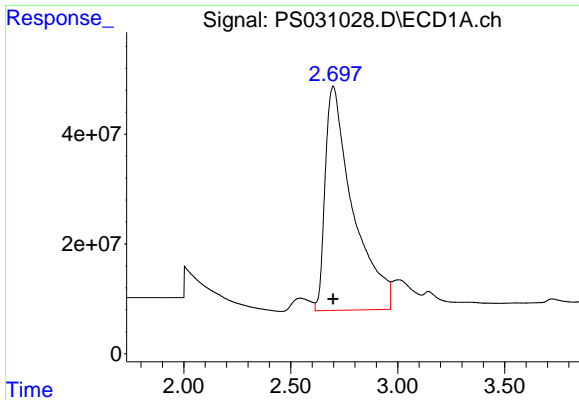
Data Path : Z:\pestpcbsrv\HPCHEM1\ECD_S\Data\PS071425\
 Data File : PS031028.D
 Signal(s) : Signal #1: ECD1A.ch Signal #2: ECD2B.ch
 Acq On : 14 Jul 2025 19:56
 Operator : AR\AJ
 Sample : HSTDCCC750
 Misc :
 ALS Vial : 3 Sample Multiplier: 1

Instrument :
 ECD_S
 ClientSampleId :
 HSTDCCC750

Integration File signal 1: autoint1.e
 Integration File signal 2: autoint2.e
 Quant Time: Jul 15 01:31:54 2025
 Quant Method : Z:\pestpcbsrv\HPCHEM1\ECD_S\Method\PS071125.M
 Quant Title : 8080.M
 QLast Update : Mon Jul 14 05:51:06 2025
 Response via : Initial Calibration
 Integrator: ChemStation

Volume Inj. : 1 µl
 Signal #1 Phase : ZB-MR1 Signal #2 Phase: ZB-MR2
 Signal #1 Info : 30M x 0.32mm x0.5 Signal #2 Info : 30M x 0.32mm x 0.25µm

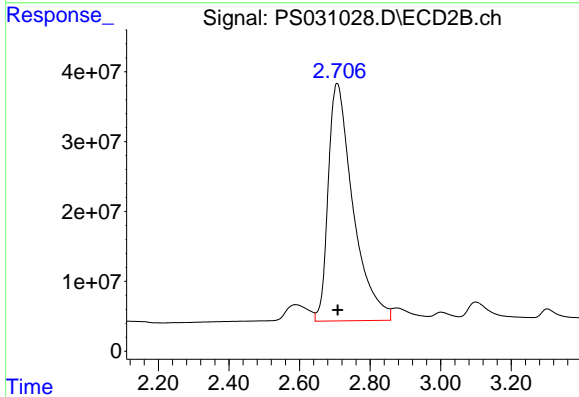




#1 Dalapon

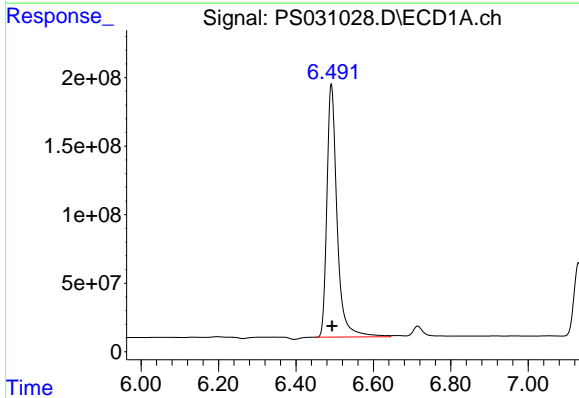
R.T.: 2.697 min
 Delta R.T.: 0.000 min
 Response: 3661797606
 Conc: 601.11 ng/ml

Instrument :
 ECD_S
 ClientSampleId :
 HSTDCCC750



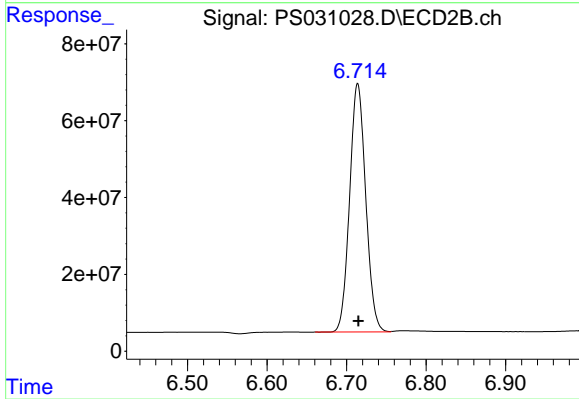
#1 Dalapon

R.T.: 2.706 min
 Delta R.T.: -0.002 min
 Response: 1658007064
 Conc: 583.22 ng/ml



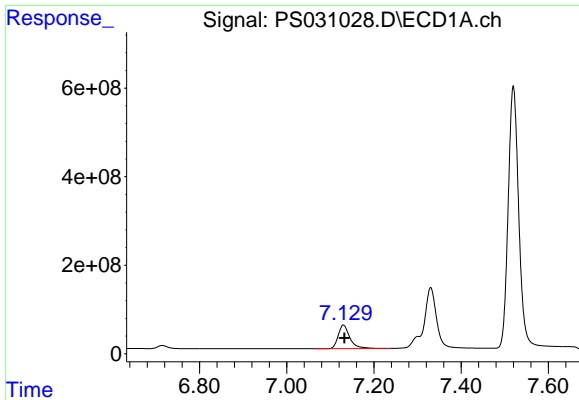
#2 3,5-DICHLOROBENZOIC ACID

R.T.: 6.491 min
 Delta R.T.: -0.003 min
 Response: 3360854216
 Conc: 641.56 ng/ml



#2 3,5-DICHLOROBENZOIC ACID

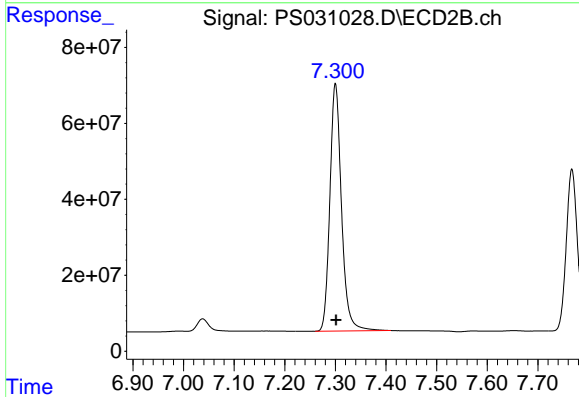
R.T.: 6.714 min
 Delta R.T.: 0.000 min
 Response: 909621349
 Conc: 586.72 ng/ml



#3 4-Nitrophenol

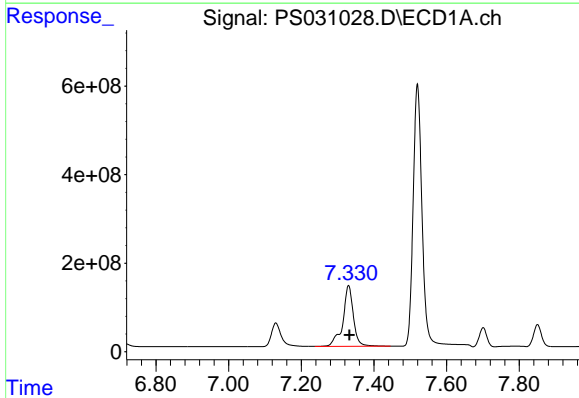
R.T.: 7.130 min
 Delta R.T.: -0.002 min
 Response: 982576526
 Conc: 727.83 ng/ml

Instrument :
 ECD_S
 ClientSampleId :
 HSTDCCC750



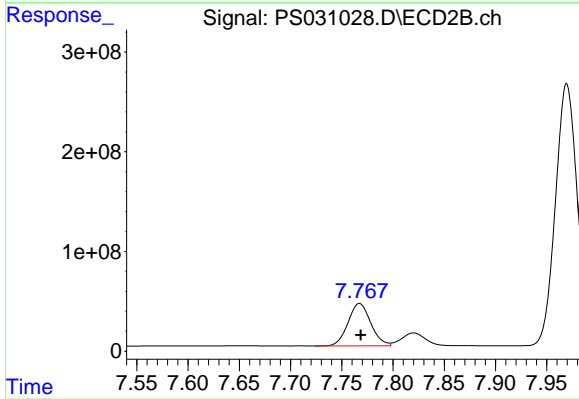
#3 4-Nitrophenol

R.T.: 7.300 min
 Delta R.T.: -0.001 min
 Response: 1038920518
 Conc: 595.75 ng/ml



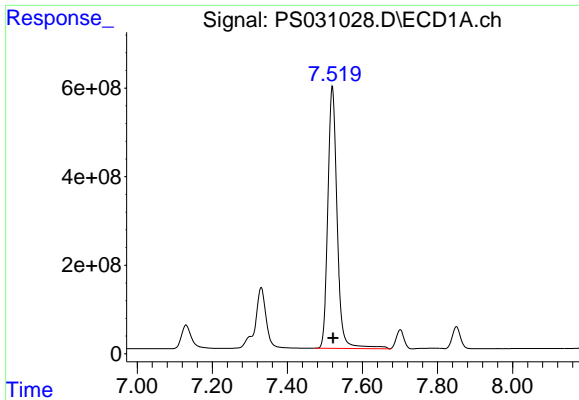
#4 2,4-DCAA

R.T.: 7.330 min
 Delta R.T.: -0.003 min
 Response: 2763962324
 Conc: 698.84 ng/ml



#4 2,4-DCAA

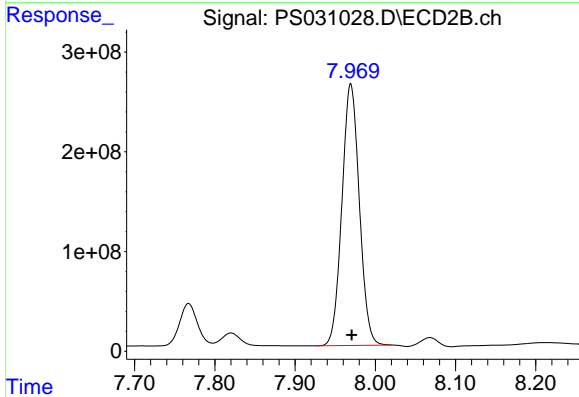
R.T.: 7.767 min
 Delta R.T.: -0.001 min
 Response: 656822389
 Conc: 633.98 ng/ml



#5 DICAMBA

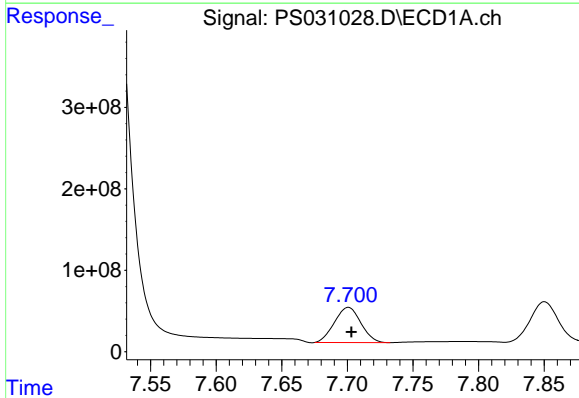
R.T.: 7.520 min
 Delta R.T.: -0.003 min
 Response: 10201649961
 Conc: 650.16 ng/ml

Instrument :
 ECD_S
 ClientSampleId :
 HSTDCCC750



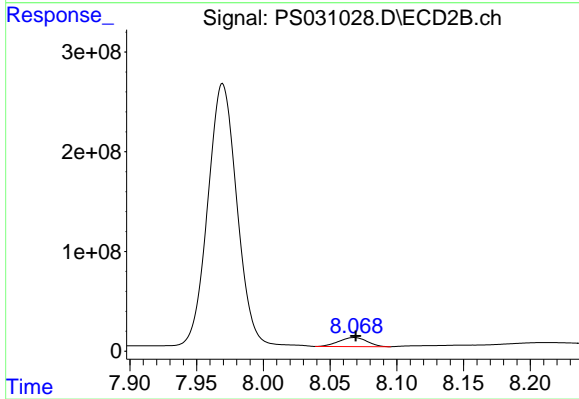
#5 DICAMBA

R.T.: 7.970 min
 Delta R.T.: -0.001 min
 Response: 3952840329
 Conc: 610.34 ng/ml



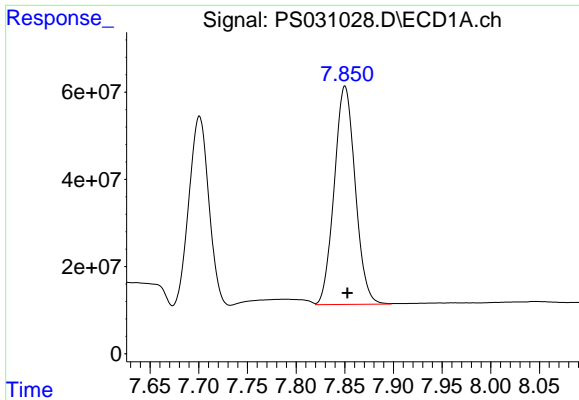
#6 MCP

R.T.: 7.701 min
 Delta R.T.: -0.002 min
 Response: 609335803
 Conc: 66.22 ug/ml



#6 MCP

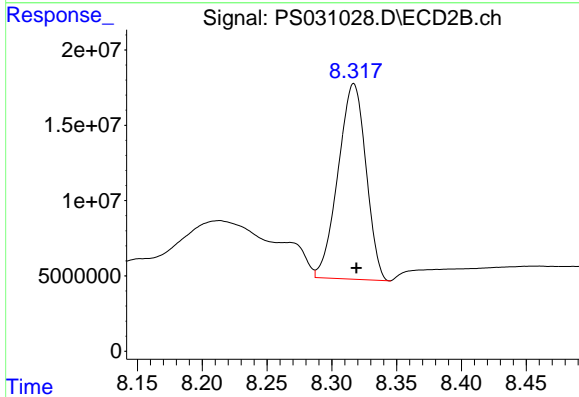
R.T.: 8.068 min
 Delta R.T.: -0.001 min
 Response: 132549620
 Conc: 62.00 ug/ml



#7 MCPA

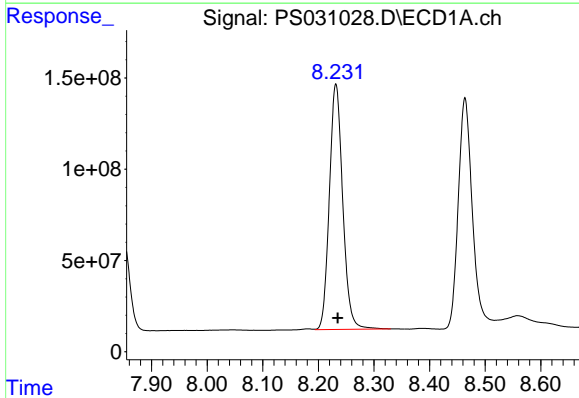
R.T.: 7.850 min
 Delta R.T.: -0.003 min
 Response: 750608381
 Conc: 68.82 ug/ml

Instrument :
 ECD_S
 ClientSampleId :
 HSTDCCC750



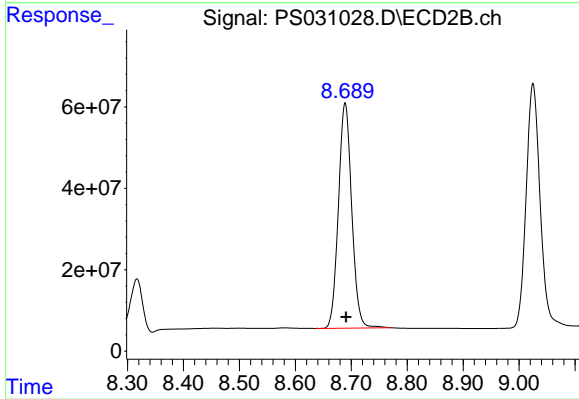
#7 MCPA

R.T.: 8.317 min
 Delta R.T.: -0.002 min
 Response: 194312153
 Conc: 60.62 ug/ml



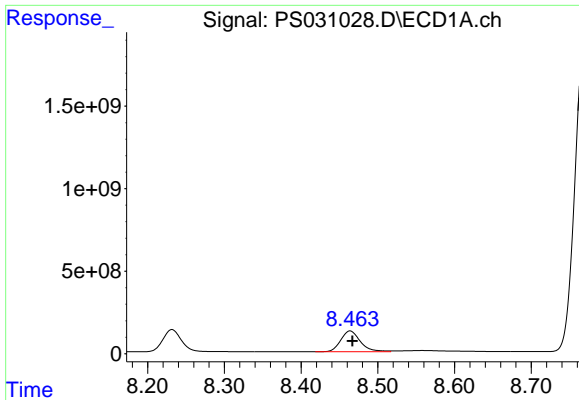
#8 DICHLORPROP

R.T.: 8.232 min
 Delta R.T.: -0.003 min
 Response: 2247134533
 Conc: 659.92 ng/ml



#8 DICHLORPROP

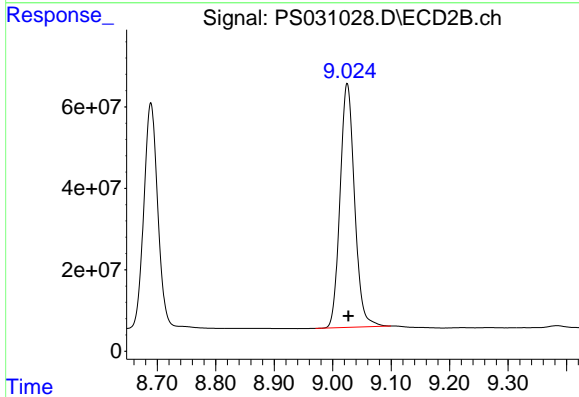
R.T.: 8.689 min
 Delta R.T.: -0.001 min
 Response: 912925360
 Conc: 600.90 ng/ml



#9 2,4-D

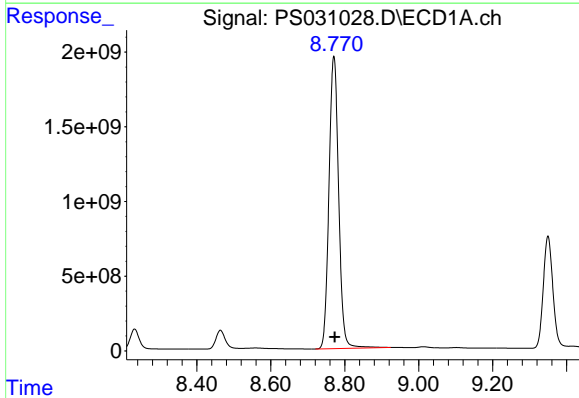
R.T.: 8.464 min
 Delta R.T.: -0.003 min
 Response: 2241566132
 Conc: 728.15 ng/ml

Instrument :
 ECD_S
 ClientSampleId :
 HSTDCCC750



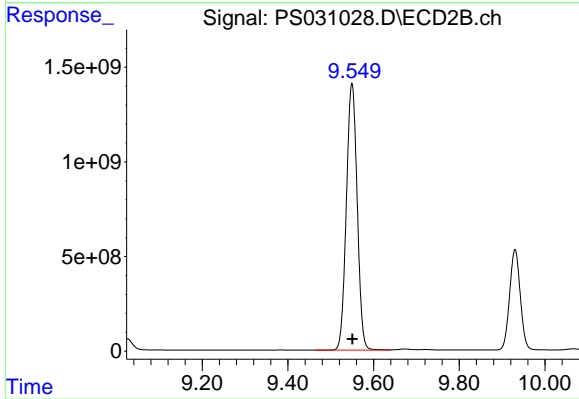
#9 2,4-D

R.T.: 9.025 min
 Delta R.T.: -0.002 min
 Response: 1030273733
 Conc: 606.23 ng/ml



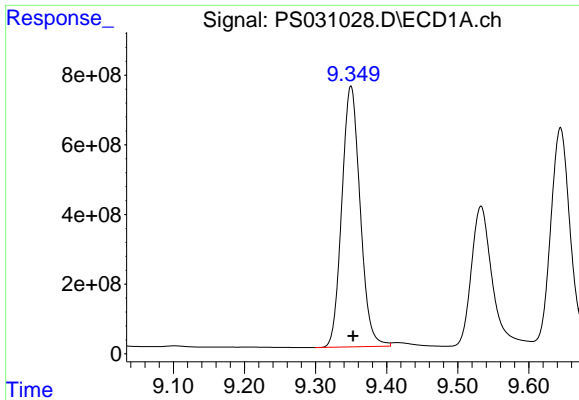
#10 Pentachlorophenol

R.T.: 8.771 min
 Delta R.T.: -0.003 min
 Response: 35501350793
 Conc: 706.33 ng/ml



#10 Pentachlorophenol

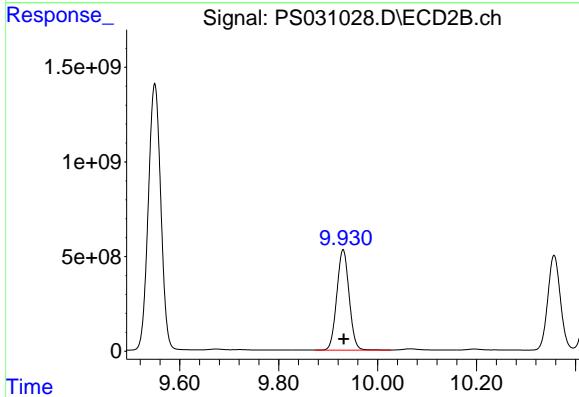
R.T.: 9.549 min
 Delta R.T.: 0.000 min
 Response: 24693540371
 Conc: 640.81 ng/ml



#11 2,4,5-TP (SILVEX)

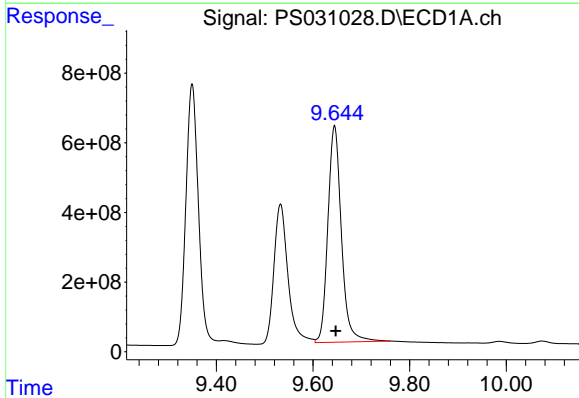
R.T.: 9.350 min
 Delta R.T.: -0.003 min
 Response: 13399967332
 Conc: 720.01 ng/ml

Instrument :
 ECD_S
 ClientSampleId :
 HSTDCCC750



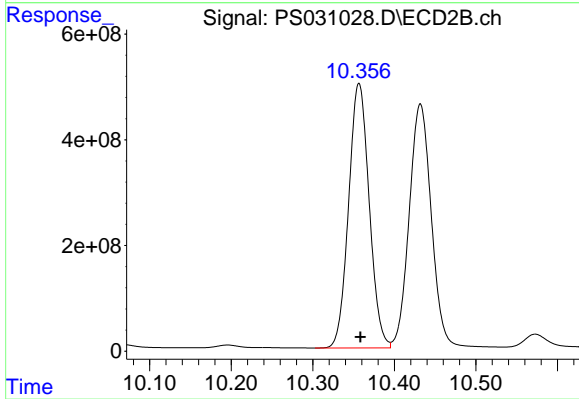
#11 2,4,5-TP (SILVEX)

R.T.: 9.930 min
 Delta R.T.: -0.001 min
 Response: 9188579347
 Conc: 626.11 ng/ml



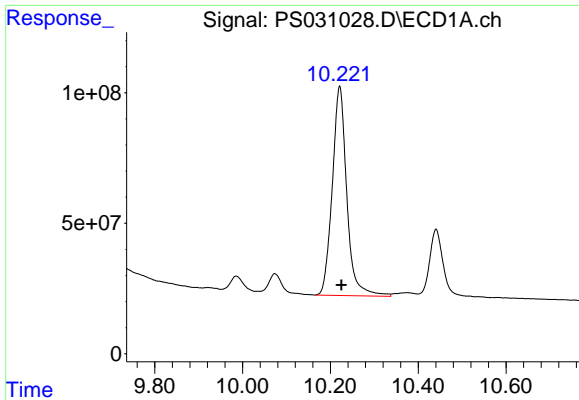
#12 2,4,5-T

R.T.: 9.645 min
 Delta R.T.: -0.002 min
 Response: 12076573010
 Conc: 793.82 ng/ml



#12 2,4,5-T

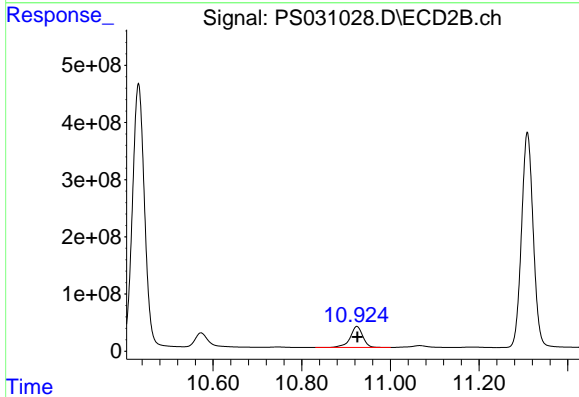
R.T.: 10.357 min
 Delta R.T.: -0.002 min
 Response: 8792845555
 Conc: 628.43 ng/ml



#13 2,4-DB

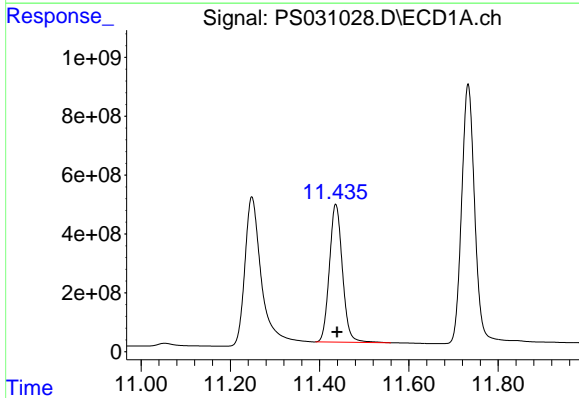
R.T.: 10.221 min
 Delta R.T.: -0.004 min
 Response: 1841615355
 Conc: 848.36 ng/ml

Instrument :
 ECD_S
 ClientSampleId :
 HSTDCCC750



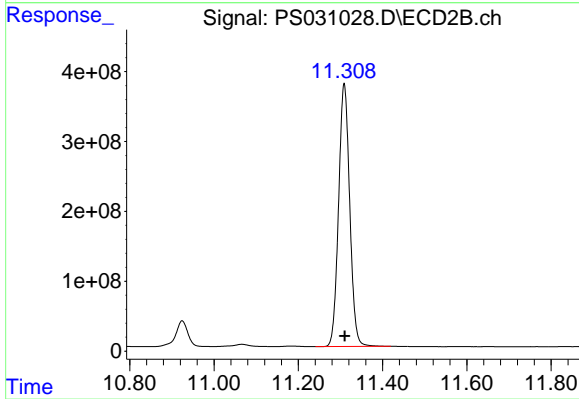
#13 2,4-DB

R.T.: 10.924 min
 Delta R.T.: -0.002 min
 Response: 728891777
 Conc: 616.04 ng/ml



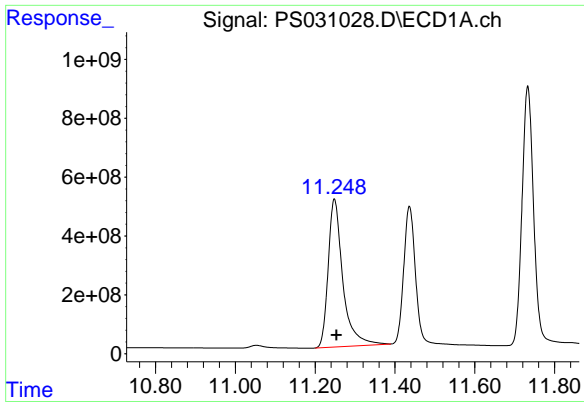
#14 DINOSEB

R.T.: 11.436 min
 Delta R.T.: -0.003 min
 Response: 9487065088
 Conc: 719.59 ng/ml



#14 DINOSEB

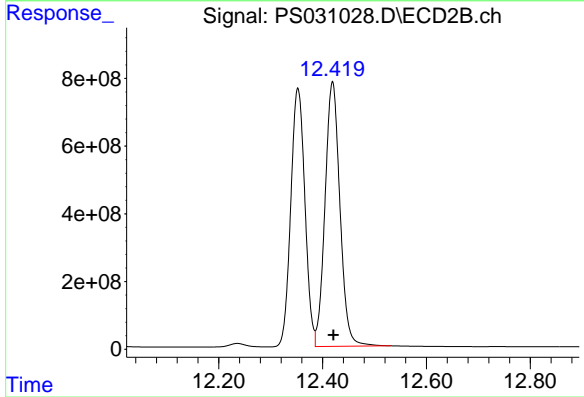
R.T.: 11.309 min
 Delta R.T.: -0.002 min
 Response: 6887677606
 Conc: 606.76 ng/ml



#15 Picloram

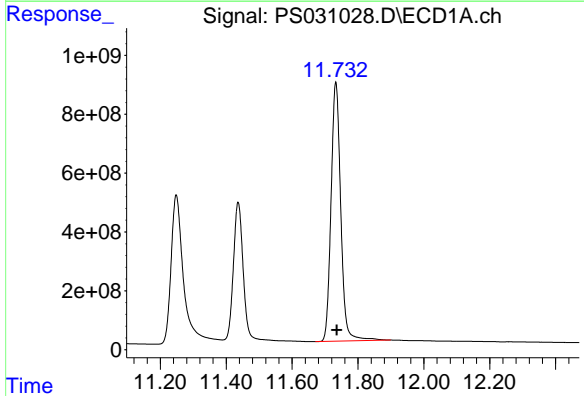
R.T.: 11.248 min
 Delta R.T.: -0.005 min
 Response: 12808011946
 Conc: 878.95 ng/ml

Instrument :
 ECD_S
 ClientSampleId :
 HSTDCCC750



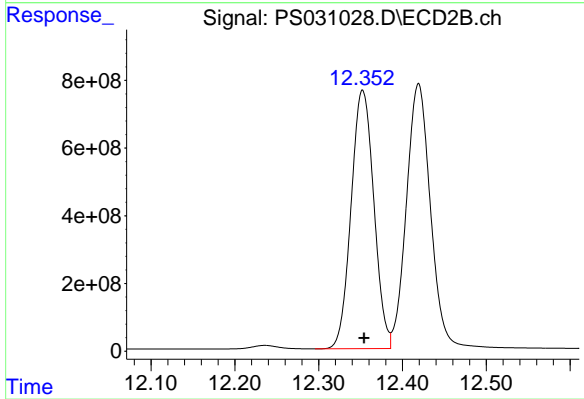
#15 Picloram

R.T.: 12.419 min
 Delta R.T.: -0.002 min
 Response: 15566514189
 Conc: 662.95 ng/ml



#16 DCPA

R.T.: 11.733 min
 Delta R.T.: -0.003 min
 Response: 17997637745
 Conc: 751.87 ng/ml



#16 DCPA

R.T.: 12.352 min
 Delta R.T.: -0.002 min
 Response: 14397220168
 Conc: 638.40 ng/ml