

Data Path : Z:\pestpcbsrv\HPCHEM1\ECD\_S\Data\PS071522\  
 Data File : PS019973.D  
 Signal(s) : Signal #1: ECD1A.ch Signal #2: ECD2B.ch  
 Acq On : 15 Jul 2022 13:28  
 Operator : AJ\MA  
 Sample : PB146245BS  
 Misc :  
 ALS Vial : 12 Sample Multiplier: 1

Instrument :  
 ECD\_S  
 ClientSampleId :

Integration File signal 1: autoint1.e  
 Integration File signal 2: autoint2.e  
 Quant Time: Jul 16 01:36:18 2022  
 Quant Method : Z:\pestpcbsrv\HPCHEM1\ECD\_S\Method\PS062722.M  
 Quant Title : 8080.M  
 QLast Update : Mon Jun 27 17:26:48 2022  
 Response via : Initial Calibration  
 Integrator: ChemStation

Volume Inj. : 2 µl  
 Signal #1 Phase : Rtx-CLPesticides Signal #2 Phase: Rtx-CLPesticides2  
 Signal #1 Info : 30M x 0.32mm x0.5 Signal #2 Info : 30M x 0.32mm x 0.25µm

	Compound	RT#1	RT#2	Resp#1	Resp#2	ng/ml	ng/ml
-----							
System Monitoring Compounds							
4) S	2,4-DCAA	7.193	6.779	1439.9E6	393.2E6	555.153	484.193
Target Compounds							
1) T	Dalapon	3.015	2.528	2036.8E6	463.6E6	420.200	436.816
2) T	3,5-DICHL...	6.408	5.960	1784.1E6	584.1E6	520.837	457.128
3) T	4-Nitroph...	7.031	6.402	529.9E6	194.3E6	497.826	449.302
5) T	DICAMBA	7.380	6.941	5496.9E6	1716.0E6	535.711	470.408
6) T	MCPD	7.547	7.035	384.2E6	127.4E6	47.882	44.397
7) T	MCPA	7.695	7.246	565.2E6	178.6E6	48.232	44.135
8) T	DICHLORPROP	8.071	7.561	1370.6E6	432.0E6	506.241	459.259
9) T	2,4-D	8.304	7.856	1427.5E6	516.4E6	480.606	458.369
10) T	Pentachlo...	8.606	8.277	19921.9E6	6297.6E6	551.655	510.042
11) T	2,4,5-TP ...	9.157	8.639	8365.4E6	2583.2E6	522.982	487.439
12) T	2,4,5-T	9.444	9.017	8887.9E6	2349.8E6	483.035	480.993
13) T	2,4-DB	9.998	9.522	1719.2E6	294.1E6	429.636	452.792
14) T	DINOSEB	11.144	9.845	8034.2E6	1769.4E6	494.182	496.431
15) T	Picloram	10.978	10.830	14617.7E6	3090.6E6	468.774	475.218
16) T	DCPA	11.413	10.773	12721.5E6	3199.3E6	493.138	493.651
-----							

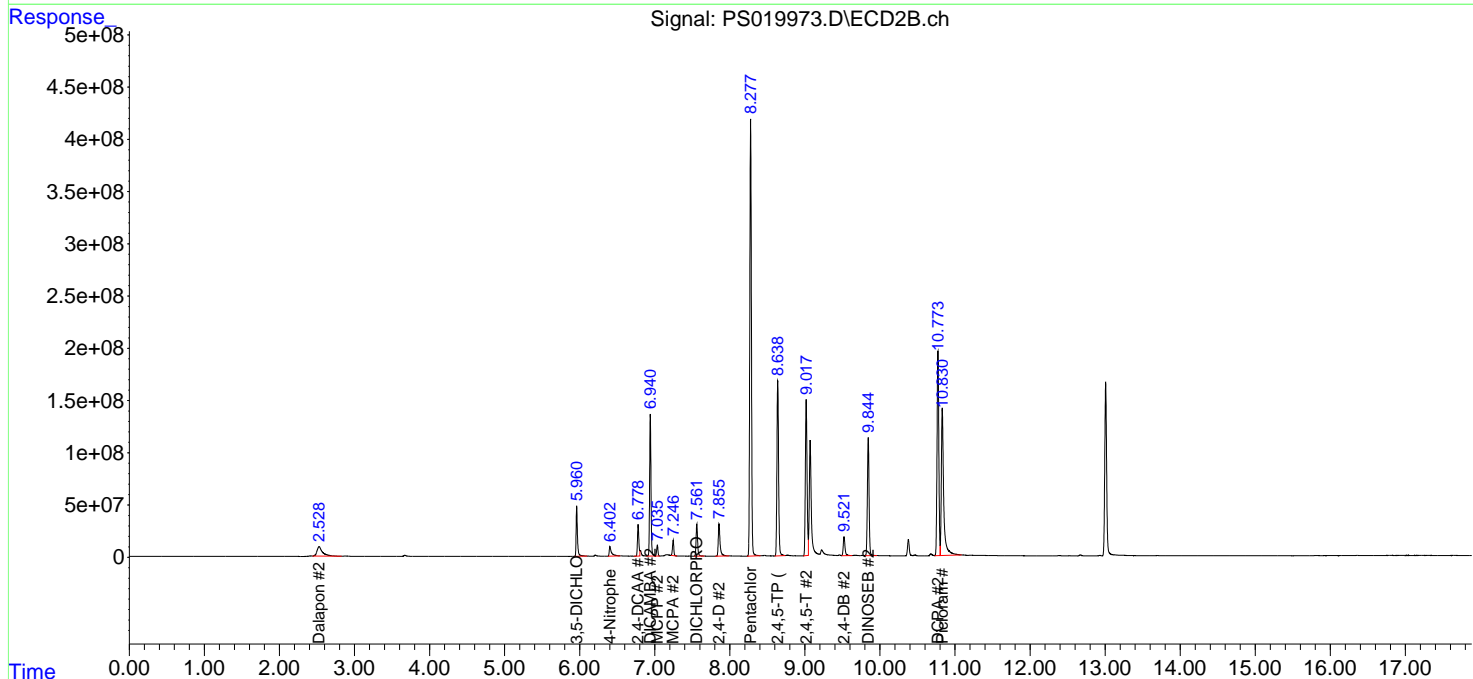
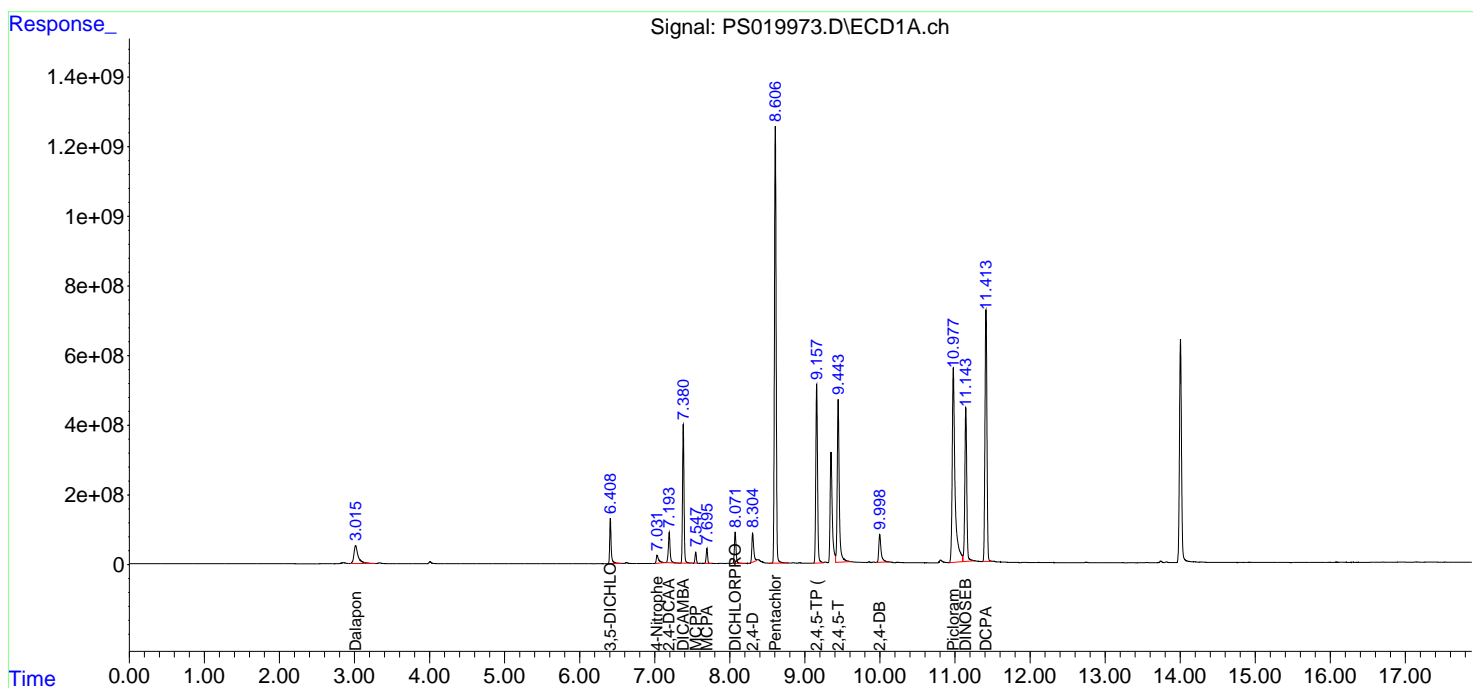
(f)=RT Delta > 1/2 Window (#)=Amounts differ by > 25% (m)=manual int.

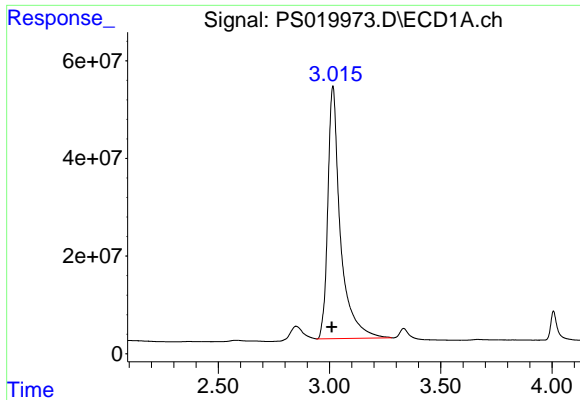
Data Path : Z:\pestpcbsrv\HPCHEM1\ECD\_S\Data\PS071522\  
 Data File : PS019973.D  
 Signal(s) : Signal #1: ECD1A.ch Signal #2: ECD2B.ch  
 Acq On : 15 Jul 2022 13:28  
 Operator : AJ\MA  
 Sample : PB146245BS  
 Misc :  
 ALS Vial : 12 Sample Multiplier: 1

Instrument :  
 ECD\_S  
 ClientSampleId :

Integration File signal 1: autoint1.e  
 Integration File signal 2: autoint2.e  
 Quant Time: Jul 16 01:36:18 2022  
 Quant Method : Z:\pestpcbsrv\HPCHEM1\ECD\_S\Method\PS062722.M  
 Quant Title : 8080.M  
 QLast Update : Mon Jun 27 17:26:48 2022  
 Response via : Initial Calibration  
 Integrator: ChemStation

Volume Inj. : 2 µl  
 Signal #1 Phase : Rtx-CLPesticides Signal #2 Phase: Rtx-CLPesticides2  
 Signal #1 Info : 30M x 0.32mm x0.5 Signal #2 Info : 30M x 0.32mm x 0.25µm

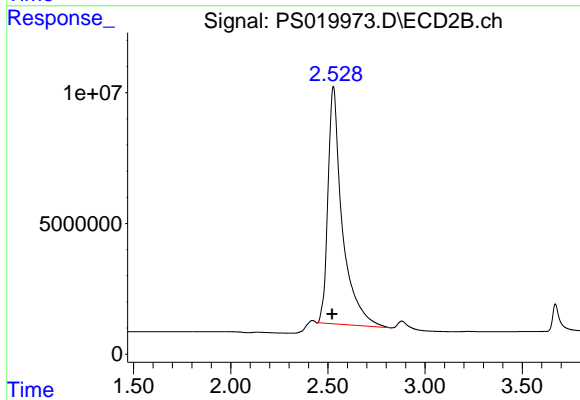




#1 Dalapon

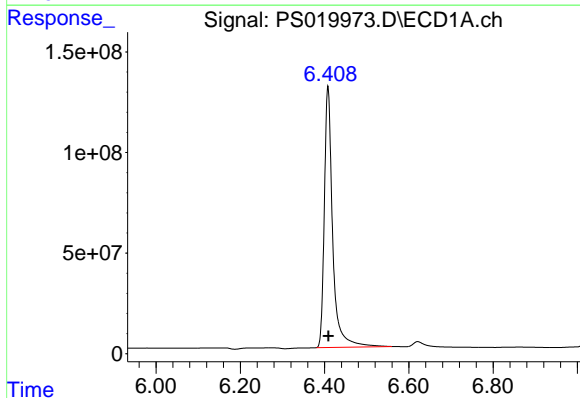
R.T.: 3.015 min  
 Delta R.T.: 0.005 min  
 Response: 2036798002  
 Conc: 420.20 ng/ml

Instrument :  
 ECD\_S  
 ClientSampleId :



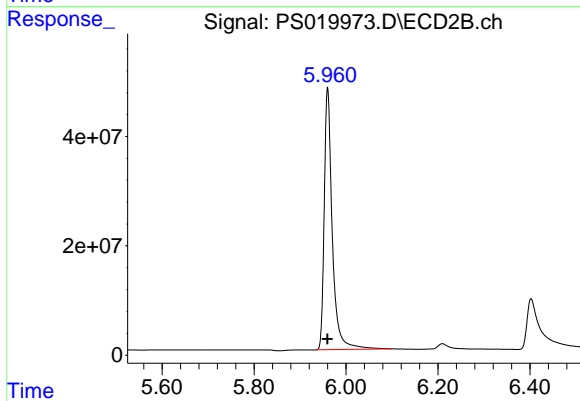
#1 Dalapon

R.T.: 2.528 min  
 Delta R.T.: 0.006 min  
 Response: 463616227  
 Conc: 436.82 ng/ml



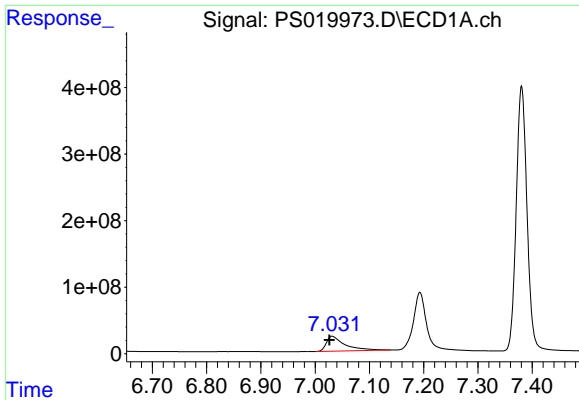
#2 3,5-DICHLOROBENZOIC ACID

R.T.: 6.408 min  
 Delta R.T.: 0.000 min  
 Response: 1784066648  
 Conc: 520.84 ng/ml



#2 3,5-DICHLOROBENZOIC ACID

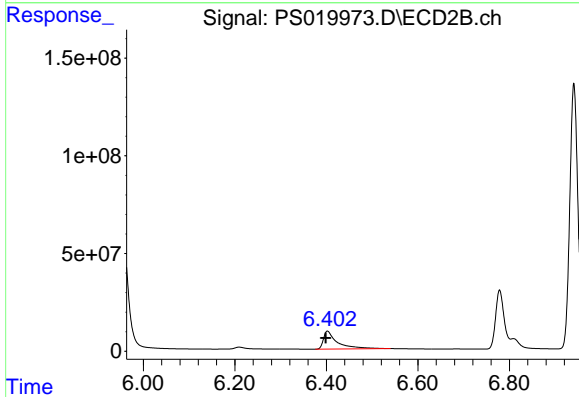
R.T.: 5.960 min  
 Delta R.T.: 0.000 min  
 Response: 584148232  
 Conc: 457.13 ng/ml



#3 4-Nitrophenol

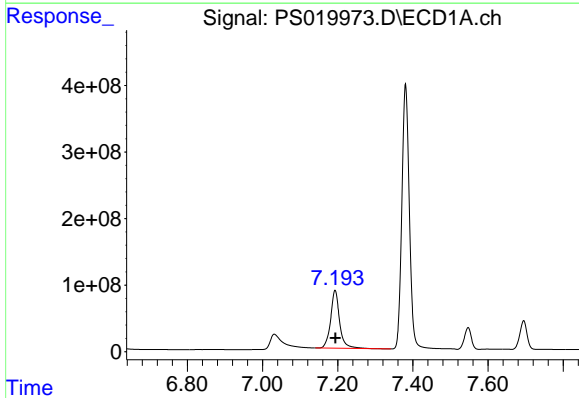
R.T.: 7.031 min  
Delta R.T.: 0.005 min  
Response: 529873300  
Conc: 497.83 ng/ml

Instrument :  
ECD\_S  
ClientSampleId :



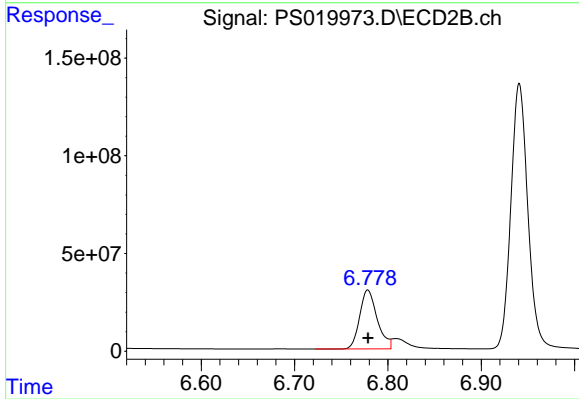
#3 4-Nitrophenol

R.T.: 6.402 min  
Delta R.T.: 0.004 min  
Response: 194329447  
Conc: 449.30 ng/ml



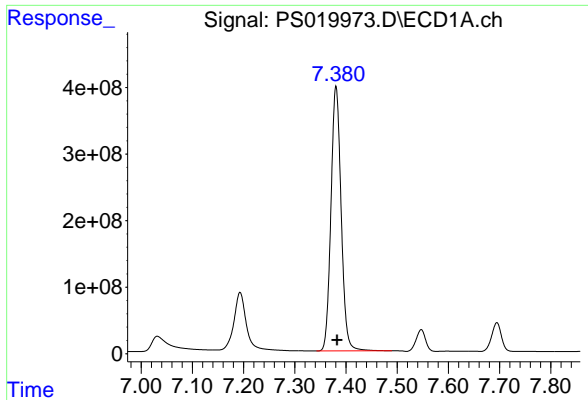
#4 2,4-DCAA

R.T.: 7.193 min  
Delta R.T.: -0.001 min  
Response: 1439872485  
Conc: 555.15 ng/ml



#4 2,4-DCAA

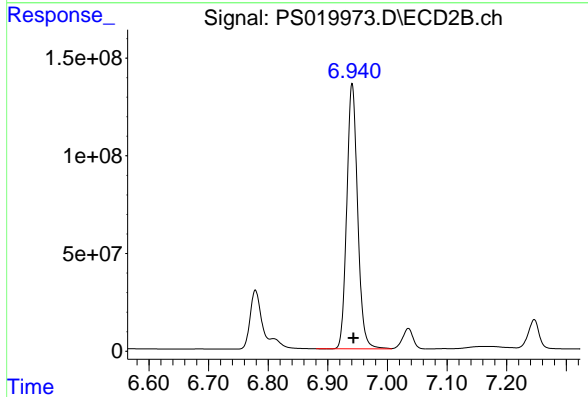
R.T.: 6.779 min  
Delta R.T.: 0.000 min  
Response: 393235776  
Conc: 484.19 ng/ml



#5 DICAMBA

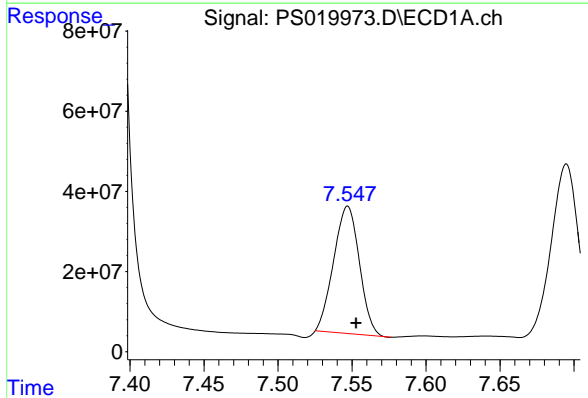
R.T.: 7.380 min  
 Delta R.T.: -0.003 min  
 Response: 5496947325  
 Conc: 535.71 ng/ml

Instrument :  
 ECD\_S  
 ClientSampleId :



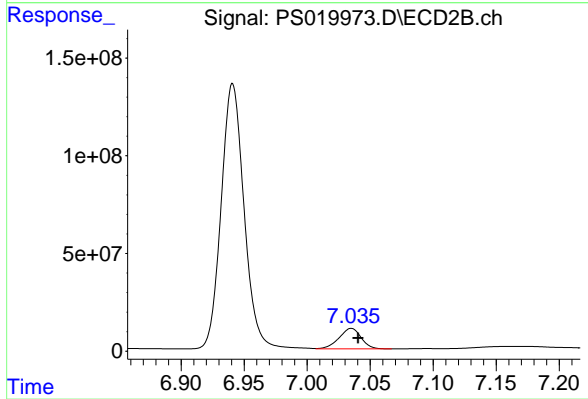
#5 DICAMBA

R.T.: 6.941 min  
 Delta R.T.: -0.002 min  
 Response: 1716036052  
 Conc: 470.41 ng/ml



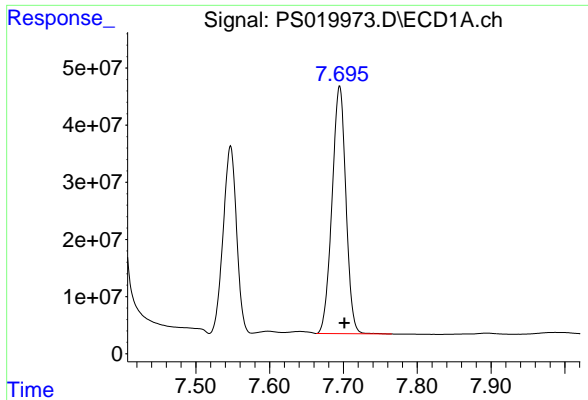
#6 MCPP

R.T.: 7.547 min  
 Delta R.T.: -0.006 min  
 Response: 384153746  
 Conc: 47.88 ug/ml



#6 MCPP

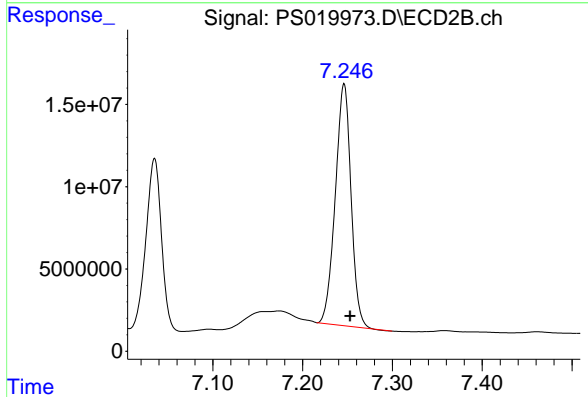
R.T.: 7.035 min  
 Delta R.T.: -0.005 min  
 Response: 127437784  
 Conc: 44.40 ug/ml



#7 MCPA

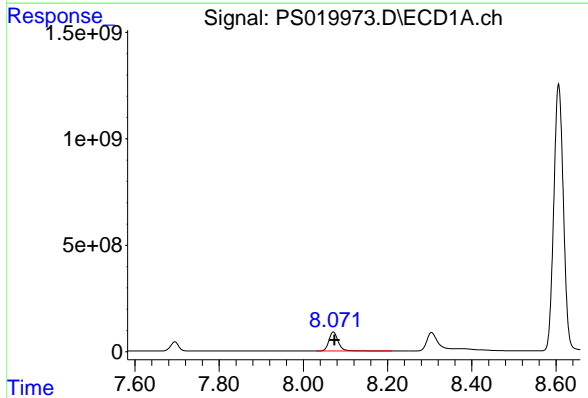
R.T.: 7.695 min  
 Delta R.T.: -0.006 min  
 Response: 565180672  
 Conc: 48.23 ug/ml

Instrument :  
 ECD\_S  
 ClientSampleId :



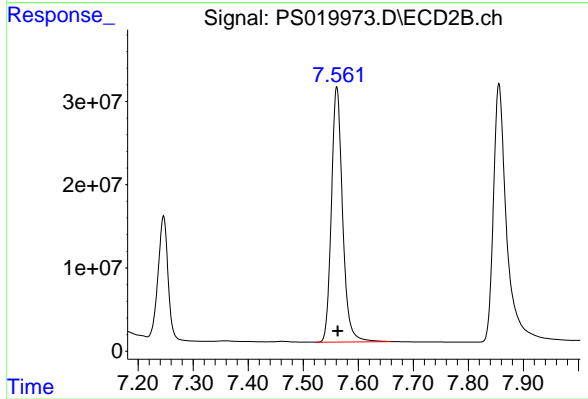
#7 MCPA

R.T.: 7.246 min  
 Delta R.T.: -0.007 min  
 Response: 178640847  
 Conc: 44.13 ug/ml



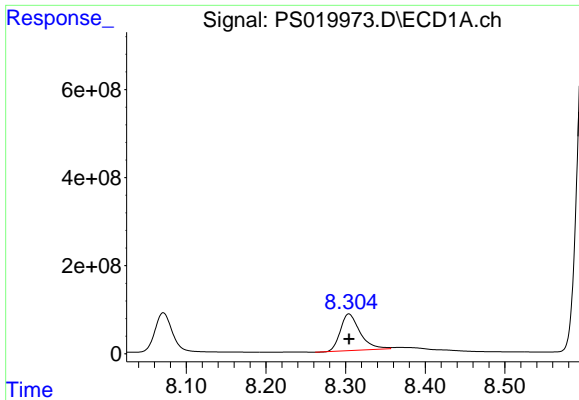
#8 DICHLORPROP

R.T.: 8.071 min  
 Delta R.T.: -0.003 min  
 Response: 1370642350  
 Conc: 506.24 ng/ml



#8 DICHLORPROP

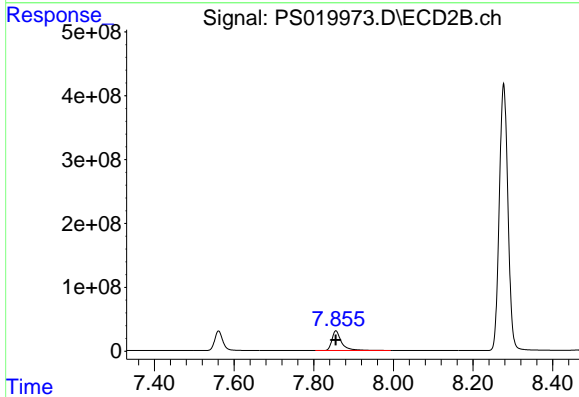
R.T.: 7.561 min  
 Delta R.T.: -0.002 min  
 Response: 432033984  
 Conc: 459.26 ng/ml



#9 2,4-D

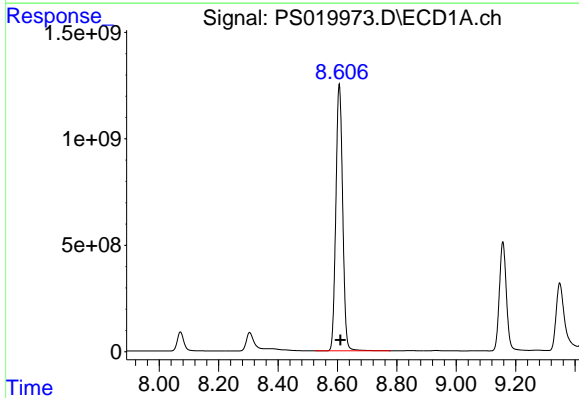
R.T.: 8.304 min  
 Delta R.T.: 0.000 min  
 Response: 1427465607  
 Conc: 480.61 ng/ml

Instrument :  
 ECD\_S  
 ClientSampleId :



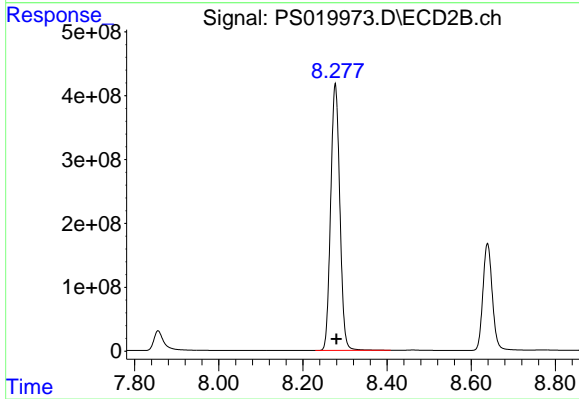
#9 2,4-D

R.T.: 7.856 min  
 Delta R.T.: 0.000 min  
 Response: 516445842  
 Conc: 458.37 ng/ml



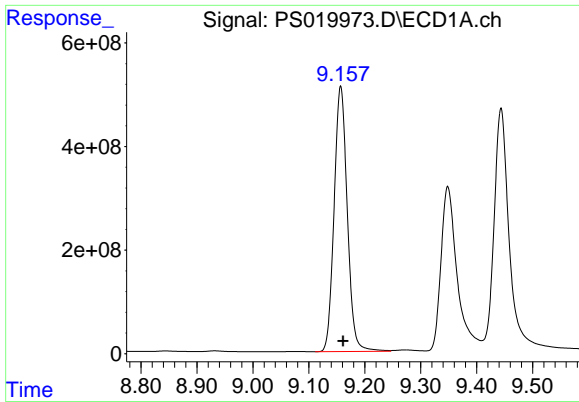
#10 Pentachlorophenol

R.T.: 8.606 min  
 Delta R.T.: -0.004 min  
 Response: 19921931900  
 Conc: 551.66 ng/ml



#10 Pentachlorophenol

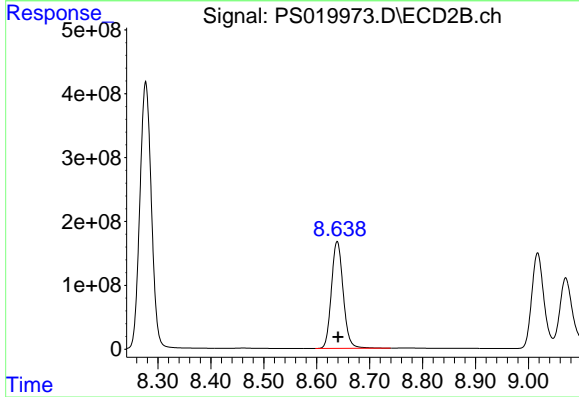
R.T.: 8.277 min  
 Delta R.T.: -0.003 min  
 Response: 6297580647  
 Conc: 510.04 ng/ml



#11 2,4,5-TP (SILVEX)

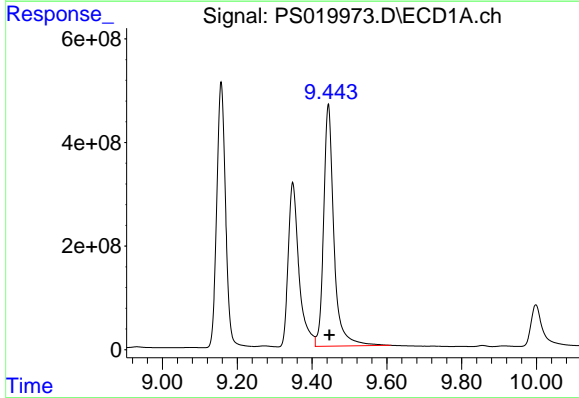
R.T.: 9.157 min  
 Delta R.T.: -0.004 min  
 Response: 8365440168  
 Conc: 522.98 ng/ml

Instrument :  
 ECD\_S  
 ClientSampleId :



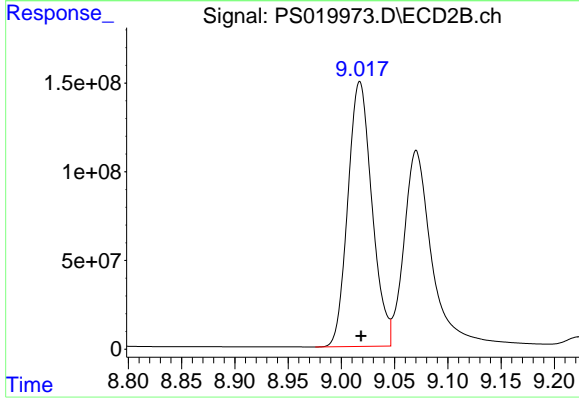
#11 2,4,5-TP (SILVEX)

R.T.: 8.639 min  
 Delta R.T.: -0.002 min  
 Response: 2583244641  
 Conc: 487.44 ng/ml



#12 2,4,5-T

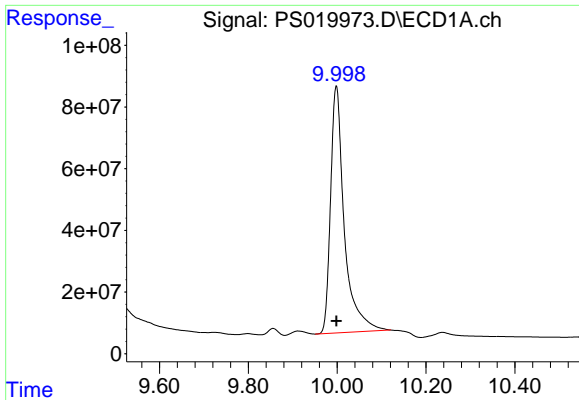
R.T.: 9.444 min  
 Delta R.T.: -0.003 min  
 Response: 8887859771  
 Conc: 483.03 ng/ml



#12 2,4,5-T

R.T.: 9.017 min  
 Delta R.T.: -0.001 min  
 Response: 2349810689  
 Conc: 480.99 ng/ml

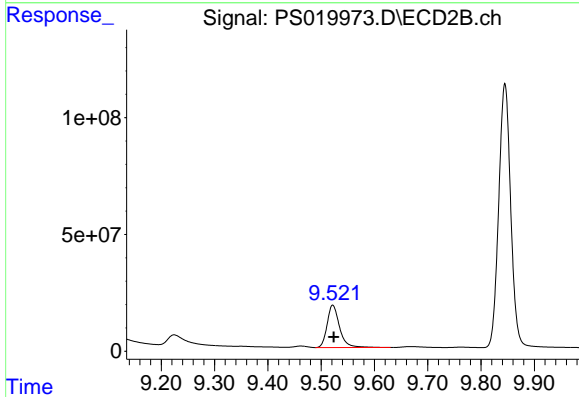




#13 2,4-DB

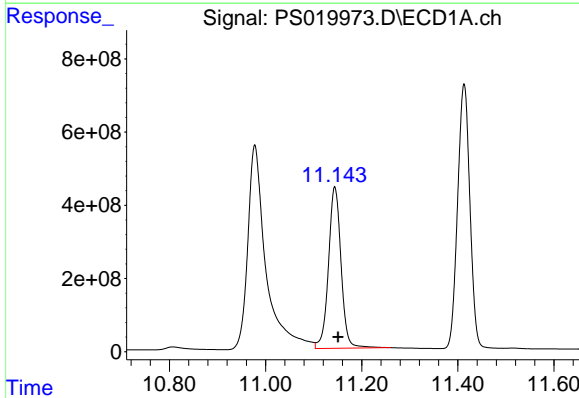
R.T.: 9.998 min  
 Delta R.T.: 0.000 min  
 Response: 1719248796  
 Conc: 429.64 ng/ml

Instrument :  
 ECD\_S  
 ClientSampleId :



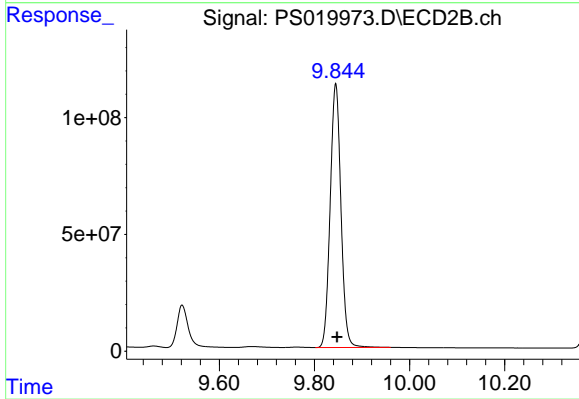
#13 2,4-DB

R.T.: 9.522 min  
 Delta R.T.: -0.002 min  
 Response: 294074344  
 Conc: 452.79 ng/ml



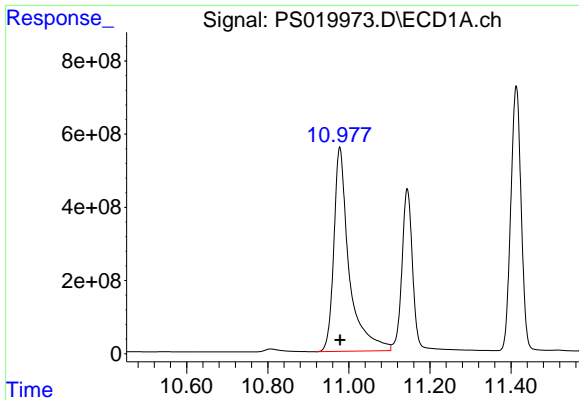
#14 DINOSEB

R.T.: 11.144 min  
 Delta R.T.: -0.007 min  
 Response: 8034232533  
 Conc: 494.18 ng/ml



#14 DINOSEB

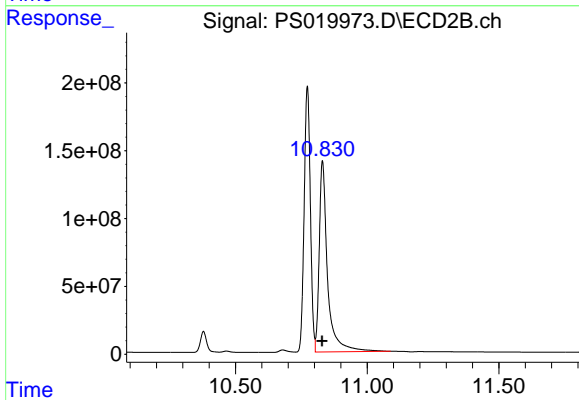
R.T.: 9.845 min  
 Delta R.T.: -0.003 min  
 Response: 1769384267  
 Conc: 496.43 ng/ml



#15 Picloram

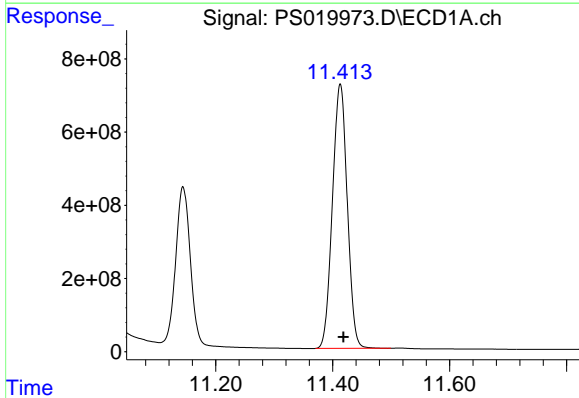
R.T.: 10.978 min  
 Delta R.T.: 0.000 min  
 Response: 14617702104  
 Conc: 468.77 ng/ml

Instrument :  
 ECD\_S  
 ClientSampleId :



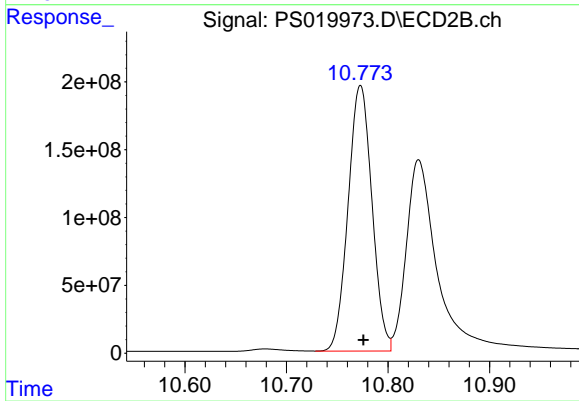
#15 Picloram

R.T.: 10.830 min  
 Delta R.T.: 0.000 min  
 Response: 3090631296  
 Conc: 475.22 ng/ml



#16 DCPA

R.T.: 11.413 min  
 Delta R.T.: -0.006 min  
 Response: 12721545476  
 Conc: 493.14 ng/ml



#16 DCPA

R.T.: 10.773 min  
 Delta R.T.: -0.003 min  
 Response: 3199267208  
 Conc: 493.65 ng/ml