

Data Path : Z:\pestpcbsrv\HPCHEM1\ECD\_S\Data\PS071525\  
 Data File : PS031031.D  
 Signal(s) : Signal #1: ECD1A.ch Signal #2: ECD2B.ch  
 Acq On : 15 Jul 2025 17:57  
 Operator : AR\AJ  
 Sample : HSTDCCC750  
 Misc :  
 ALS Vial : 3 Sample Multiplier: 1

Instrument :  
 ECD\_S  
 ClientSampleId :  
 HSTDCCC750

Integration File signal 1: autoint1.e  
 Integration File signal 2: autoint2.e  
 Quant Time: Jul 16 02:22:11 2025  
 Quant Method : Z:\pestpcbsrv\HPCHEM1\ECD\_S\Method\PS071125.M  
 Quant Title : 8080.M  
 QLast Update : Mon Jul 14 05:51:06 2025  
 Response via : Initial Calibration  
 Integrator: ChemStation

Volume Inj. : 1 µl  
 Signal #1 Phase : ZB-MR1 Signal #2 Phase: ZB-MR2  
 Signal #1 Info : 30M x 0.32mm x0.5 Signal #2 Info : 30M x 0.32mm x 0.25µm

Compound	RT#1	RT#2	Resp#1	Resp#2	ng/ml	ng/ml
-----						
System Monitoring Compounds						
4) S 2,4-DCAA	7.330	7.768	2790.6E6	711.7E6	705.580	686.981
Target Compounds						
1) T Dalapon	2.697	2.707	3728.7E6	1670.5E6	612.098	587.610
2) T 3,5-DICHL...	6.492	6.715	3602.4E6	978.5E6	687.665	631.122
3) T 4-Nitroph...	7.130	7.301	1126.9E6	1130.8E6	834.724	648.429
5) T DICAMBA	7.520	7.970	9472.0E6	4191.4E6	603.664	647.181
6) T MCPP	7.701	8.070	638.8E6	129.0E6	69.429	60.333
7) T MCPA	7.851	8.318	826.3E6	215.5E6	75.759	67.217
8) T DICHLORPROP	8.231	8.690	2764.4E6	1107.9E6	811.831	729.213
9) T 2,4-D	8.463	9.026	2795.6E6	1307.7E6	908.136	769.485
10) T Pentachlo...	8.771	9.550	37563.8E6	26909.4E6	747.367	698.310
11) T 2,4,5-TP ...	9.349	9.931	15098.9E6	10273.8E6	811.300	700.051
12) T 2,4,5-T	9.644	10.357	13051.8E6	9203.3E6	857.919	657.766
13) T 2,4-DB	10.222	10.925	1556.5E6	778.5E6	717.022	657.944
14) T DINOSEB	11.436	11.310	10480.4E6	7543.6E6	794.942	664.544
15) T Picloram	11.247	12.419	14264.4E6	16908.0E6	978.895	720.080 #
16) T DCPA	11.732	12.354	19235.6E6	15402.6E6	803.588	682.984
-----						

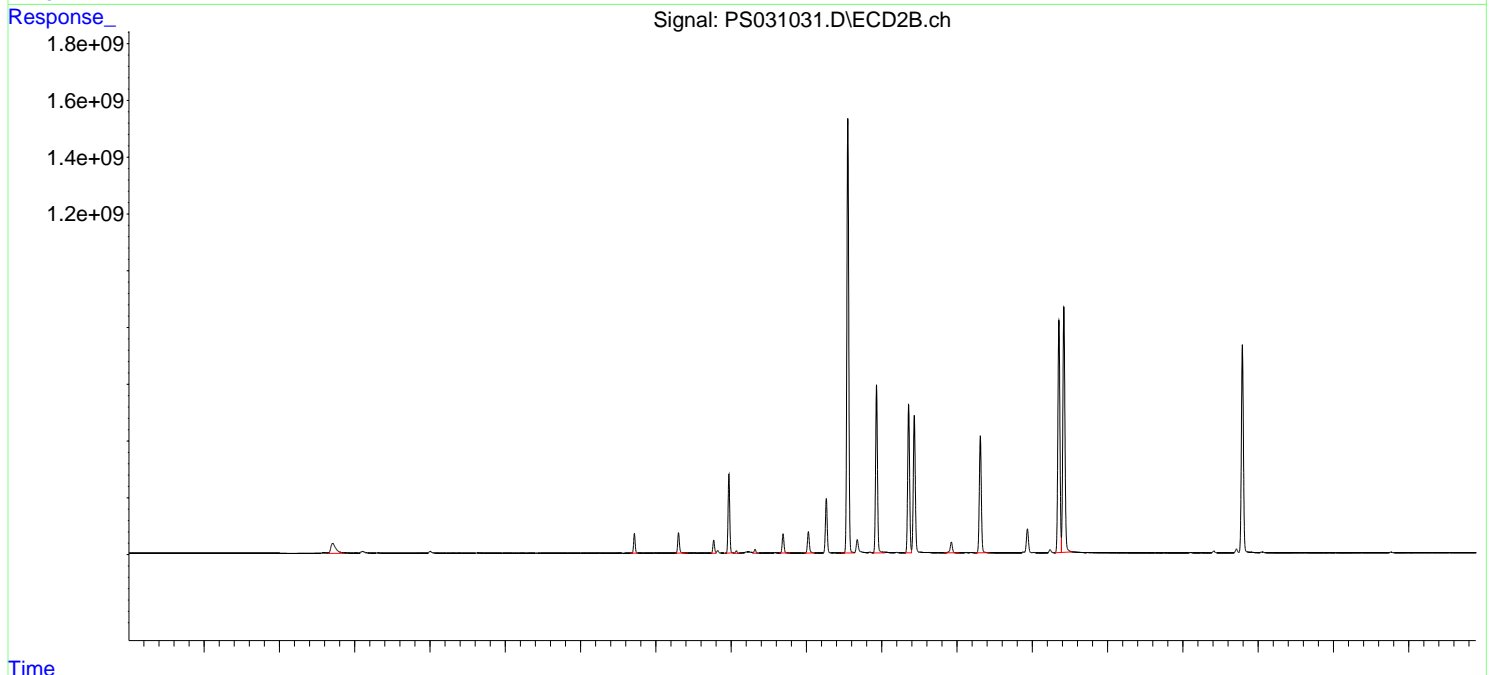
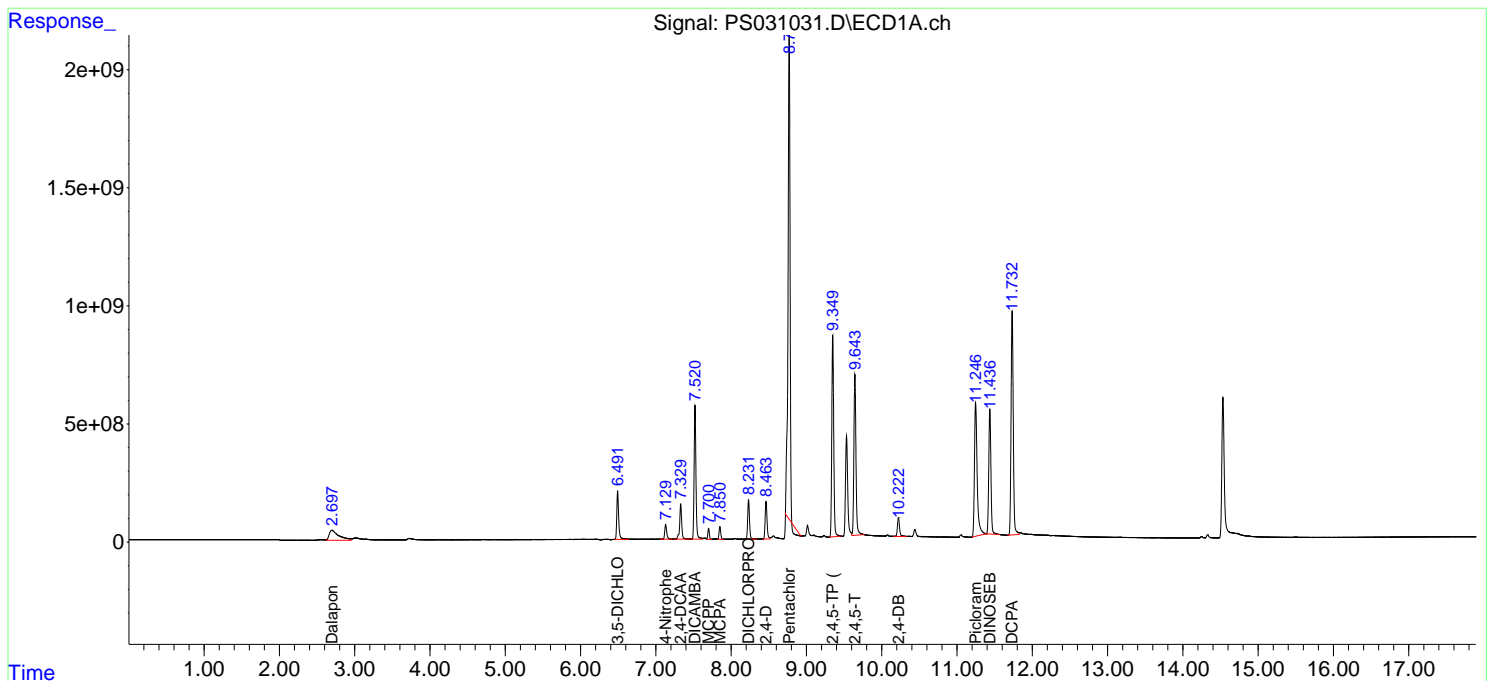
(f)=RT Delta > 1/2 Window (#)=Amounts differ by > 25% (m)=manual int.

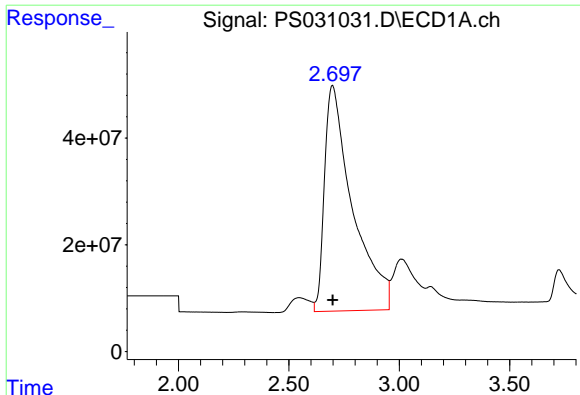
Data Path : Z:\pestpcbsrv\HPCHEM1\ECD\_S\Data\PS071525\  
 Data File : PS031031.D  
 Signal(s) : Signal #1: ECD1A.ch Signal #2: ECD2B.ch  
 Acq On : 15 Jul 2025 17:57  
 Operator : AR\AJ  
 Sample : HSTDCCC750  
 Misc :  
 ALS Vial : 3 Sample Multiplier: 1

**Instrument :**  
 ECD\_S  
**ClientSampleId :**  
 HSTDCCC750

Integration File signal 1: autoint1.e  
 Integration File signal 2: autoint2.e  
 Quant Time: Jul 16 02:22:11 2025  
 Quant Method : Z:\pestpcbsrv\HPCHEM1\ECD\_S\Method\PS071125.M  
 Quant Title : 8080.M  
 QLast Update : Mon Jul 14 05:51:06 2025  
 Response via : Initial Calibration  
 Integrator: ChemStation

Volume Inj. : 1 µl  
 Signal #1 Phase : ZB-MR1 Signal #2 Phase: ZB-MR2  
 Signal #1 Info : 30M x 0.32mm x 0.5 Signal #2 Info : 30M x 0.32mm x 0.25µm

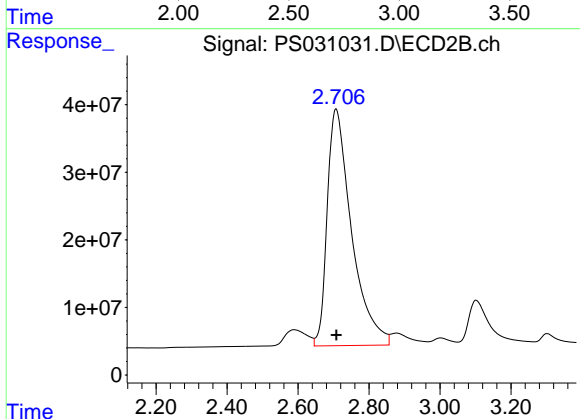




#1 Dalapon

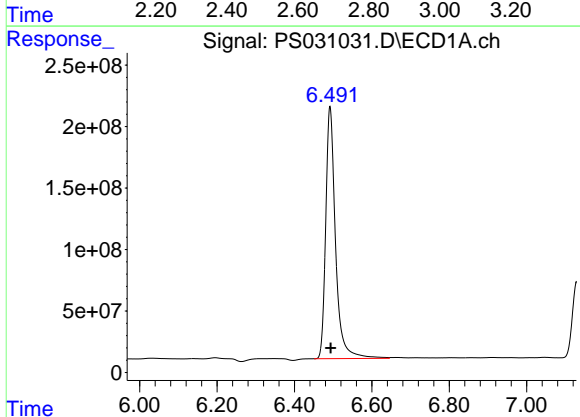
R.T.: 2.697 min  
 Delta R.T.: 0.000 min  
 Response: 3728731452  
 Conc: 612.10 ng/ml

Instrument :  
 ECD\_S  
 ClientSampleId :  
 HSTDCCC750



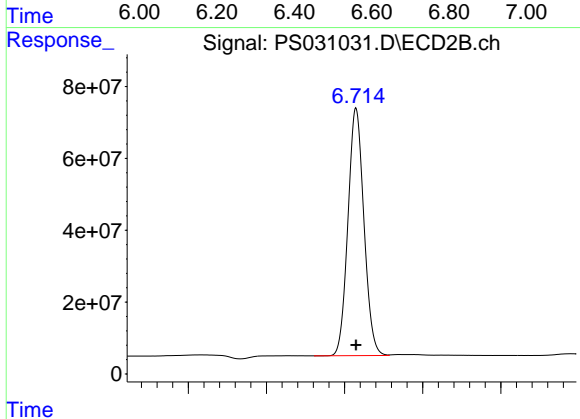
#1 Dalapon

R.T.: 2.707 min  
 Delta R.T.: -0.002 min  
 Response: 1670491745  
 Conc: 587.61 ng/ml



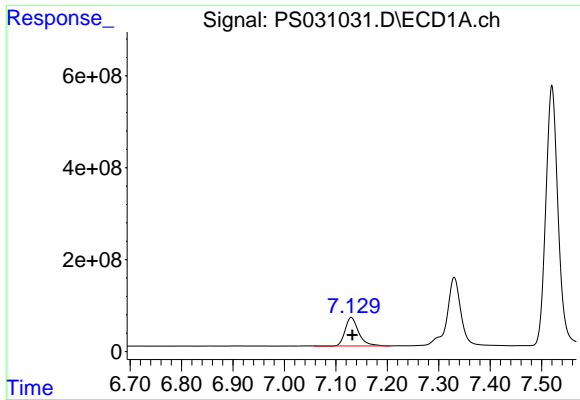
#2 3,5-DICHLOROBENZOIC ACID

R.T.: 6.492 min  
 Delta R.T.: -0.002 min  
 Response: 3602402554  
 Conc: 687.67 ng/ml



#2 3,5-DICHLOROBENZOIC ACID

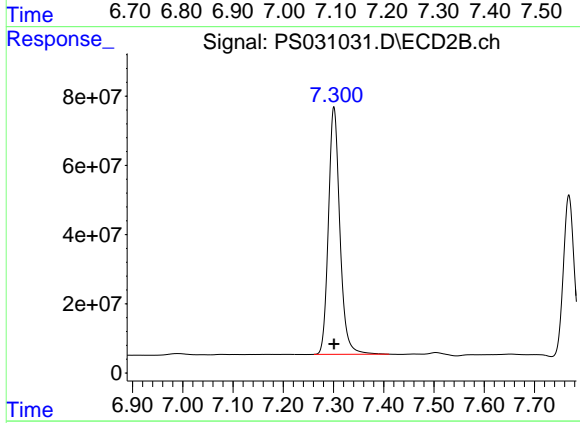
R.T.: 6.715 min  
 Delta R.T.: 0.000 min  
 Response: 978451864  
 Conc: 631.12 ng/ml



#3 4-Nitrophenol

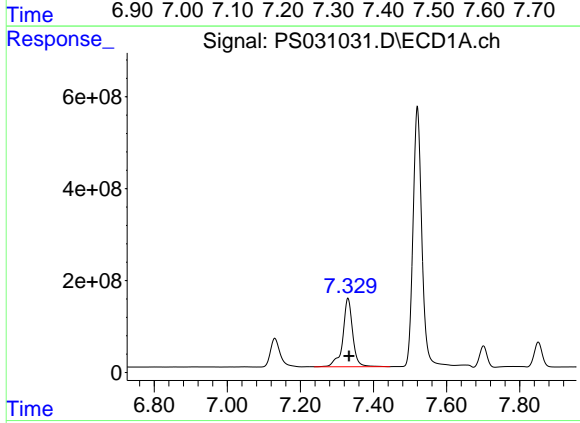
R.T.: 7.130 min  
 Delta R.T.: -0.002 min  
 Response: 1126883607  
 Conc: 834.72 ng/ml

Instrument :  
 ECD\_S  
 ClientSampleId :  
 HSTDCCC750



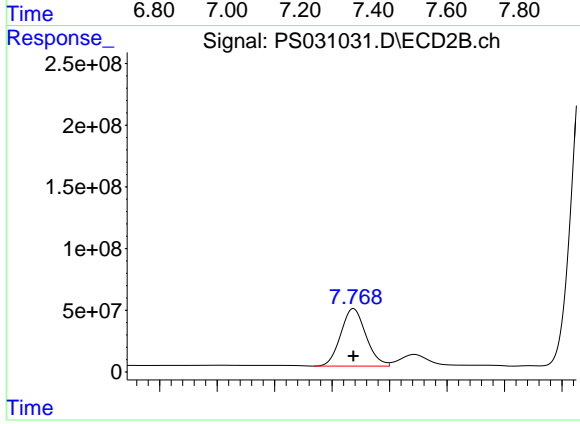
#3 4-Nitrophenol

R.T.: 7.301 min  
 Delta R.T.: 0.000 min  
 Response: 1130787269  
 Conc: 648.43 ng/ml



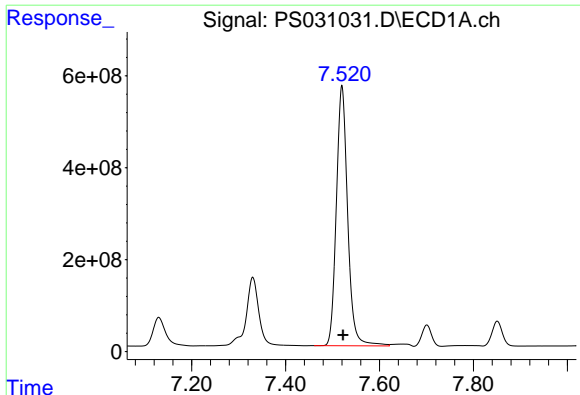
#4 2,4-DCAA

R.T.: 7.330 min  
 Delta R.T.: -0.003 min  
 Response: 2790621826  
 Conc: 705.58 ng/ml



#4 2,4-DCAA

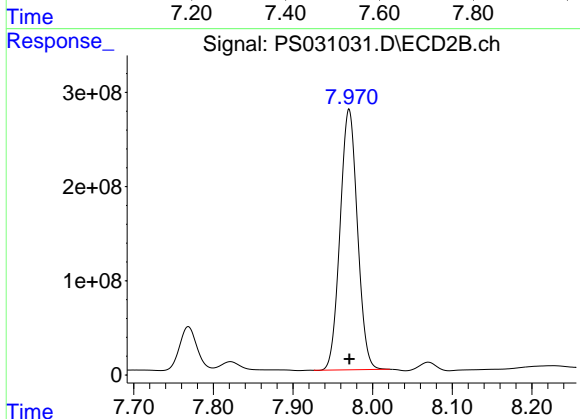
R.T.: 7.768 min  
 Delta R.T.: 0.000 min  
 Response: 711735045  
 Conc: 686.98 ng/ml



#5 DICAMBA

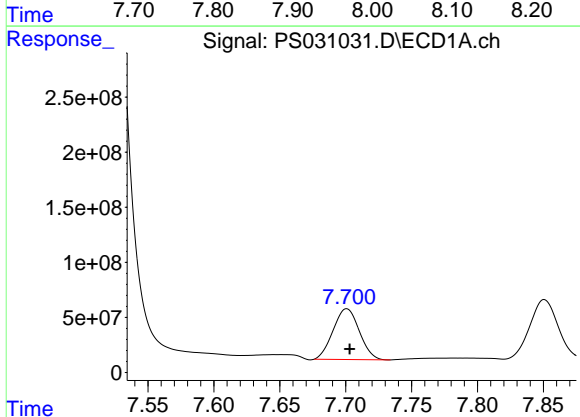
R.T.: 7.520 min  
 Delta R.T.: -0.002 min  
 Response: 9472038744  
 Conc: 603.66 ng/ml

Instrument :  
 ECD\_S  
 ClientSampleId :  
 HSTDCCC750



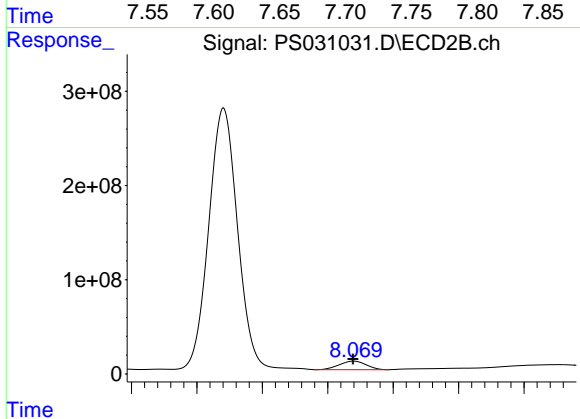
#5 DICAMBA

R.T.: 7.970 min  
 Delta R.T.: 0.000 min  
 Response: 4191415387  
 Conc: 647.18 ng/ml



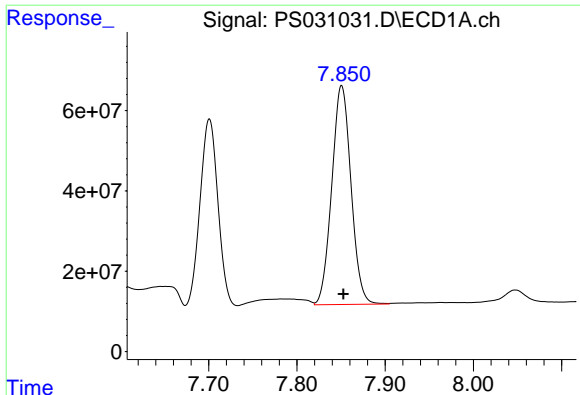
#6 MCP

R.T.: 7.701 min  
 Delta R.T.: -0.002 min  
 Response: 638836658  
 Conc: 69.43 ug/ml



#6 MCP

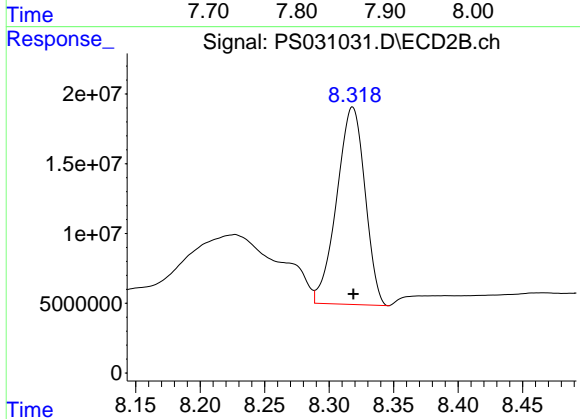
R.T.: 8.070 min  
 Delta R.T.: 0.000 min  
 Response: 128988093  
 Conc: 60.33 ug/ml



#7 MCPA

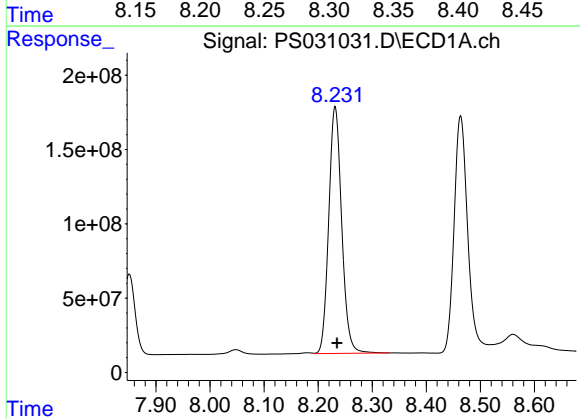
R.T.: 7.851 min  
 Delta R.T.: -0.002 min  
 Response: 826288306  
 Conc: 75.76 ug/ml

Instrument :  
 ECD\_S  
 ClientSampleId :  
 HSTDCCC750



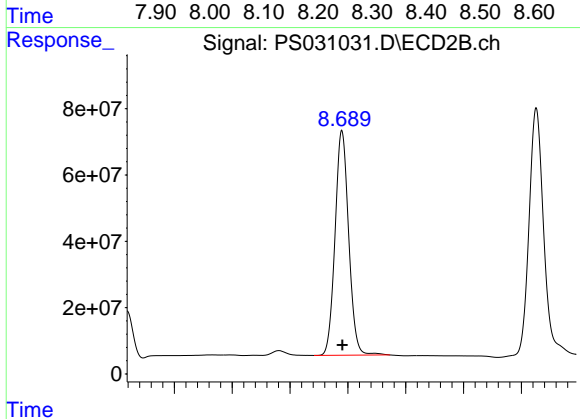
#7 MCPA

R.T.: 8.318 min  
 Delta R.T.: 0.000 min  
 Response: 215475599  
 Conc: 67.22 ug/ml



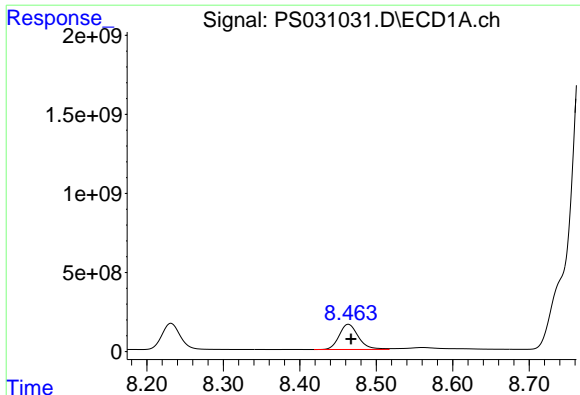
#8 DICHLORPROP

R.T.: 8.231 min  
 Delta R.T.: -0.003 min  
 Response: 2764409629  
 Conc: 811.83 ng/ml



#8 DICHLORPROP

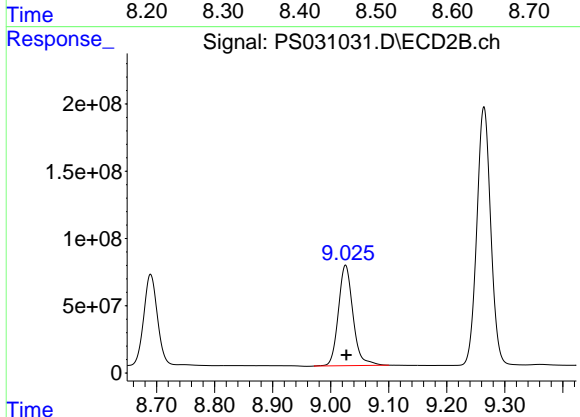
R.T.: 8.690 min  
 Delta R.T.: 0.000 min  
 Response: 1107865019  
 Conc: 729.21 ng/ml



#9 2,4-D

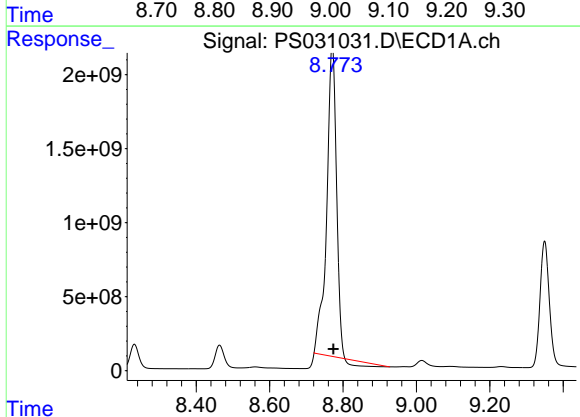
R.T.: 8.463 min  
 Delta R.T.: -0.003 min  
 Response: 2795640128  
 Conc: 908.14 ng/ml

Instrument :  
 ECD\_S  
 ClientSampleId :  
 HSTDCCC750



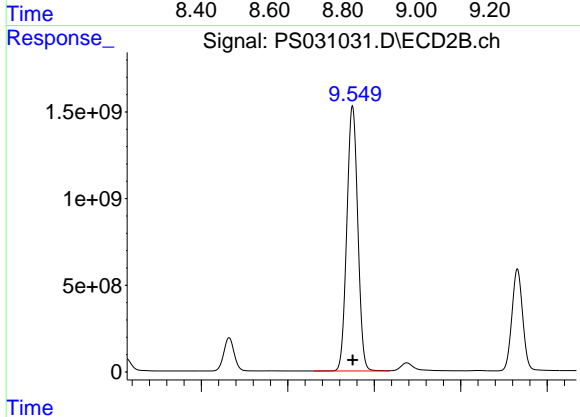
#9 2,4-D

R.T.: 9.026 min  
 Delta R.T.: -0.001 min  
 Response: 1307712613  
 Conc: 769.49 ng/ml



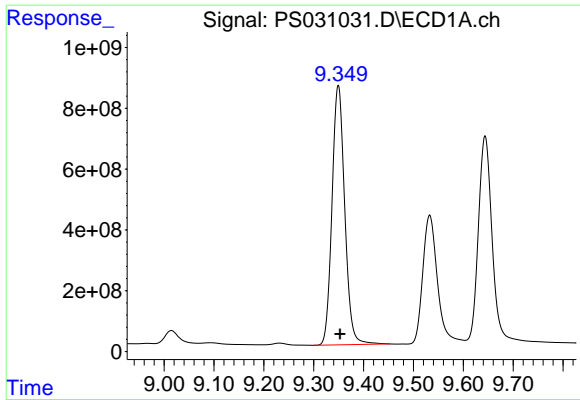
#10 Pentachlorophenol

R.T.: 8.771 min  
 Delta R.T.: -0.003 min  
 Response: 37563844412  
 Conc: 747.37 ng/ml



#10 Pentachlorophenol

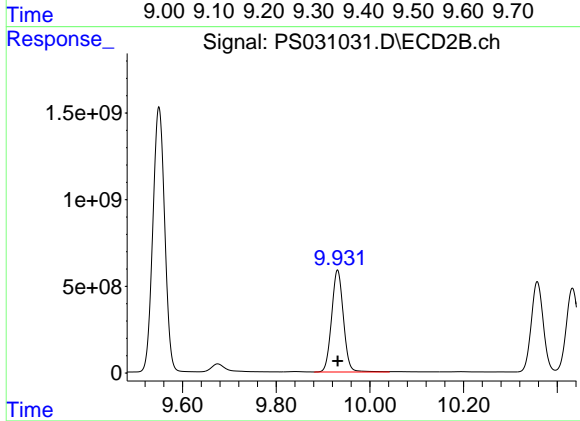
R.T.: 9.550 min  
 Delta R.T.: 0.000 min  
 Response: 26909421324  
 Conc: 698.31 ng/ml



#11 2,4,5-TP (SILVEX)

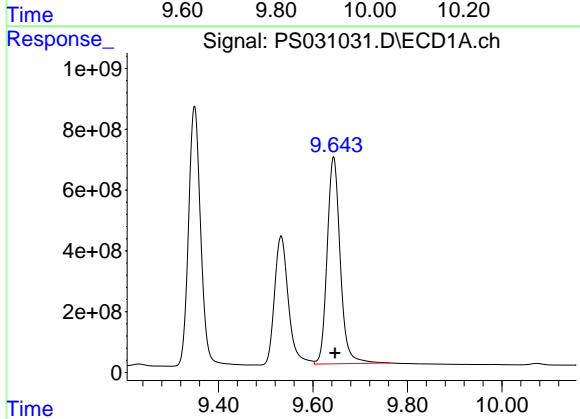
R.T.: 9.349 min  
 Delta R.T.: -0.004 min  
 Response: 15098896622  
 Conc: 811.30 ng/ml

Instrument :  
 ECD\_S  
 ClientSampleId :  
 HSTDCCC750



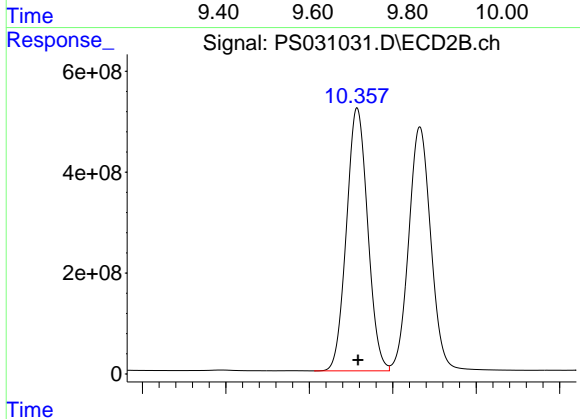
#11 2,4,5-TP (SILVEX)

R.T.: 9.931 min  
 Delta R.T.: 0.000 min  
 Response: 10273792543  
 Conc: 700.05 ng/ml



#12 2,4,5-T

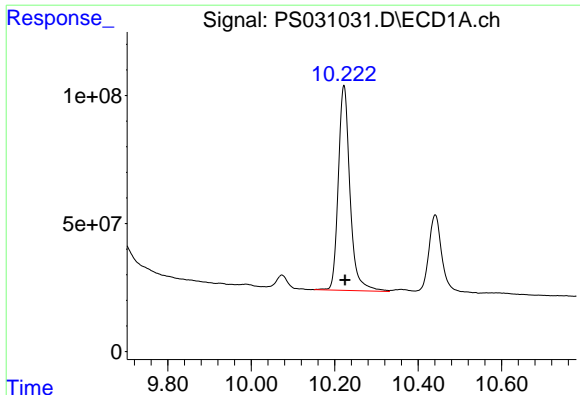
R.T.: 9.644 min  
 Delta R.T.: -0.003 min  
 Response: 13051792218  
 Conc: 857.92 ng/ml



#12 2,4,5-T

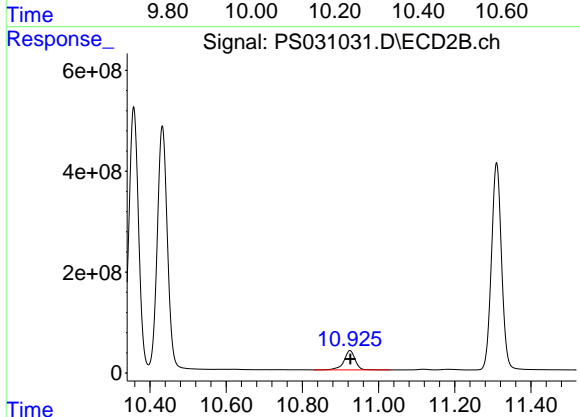
R.T.: 10.357 min  
 Delta R.T.: -0.001 min  
 Response: 9203344511  
 Conc: 657.77 ng/ml



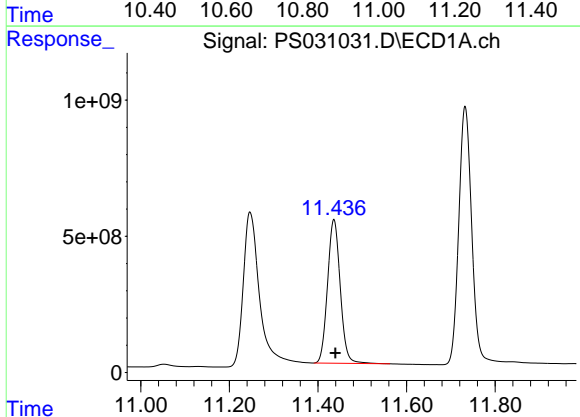


#13 2,4-DB  
 R.T.: 10.222 min  
 Delta R.T.: -0.003 min  
 Response: 1556504426  
 Conc: 717.02 ng/ml

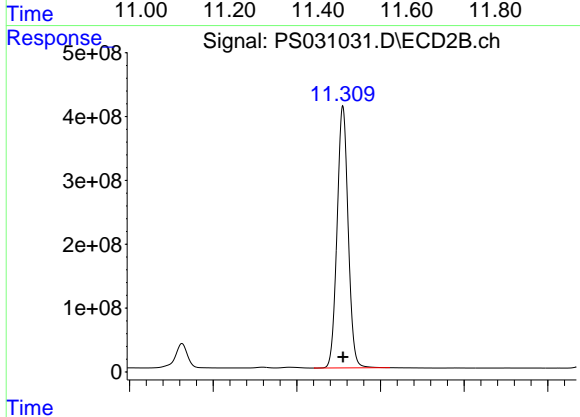
Instrument :  
 ECD\_S  
 ClientSampleId :  
 HSTDCCC750



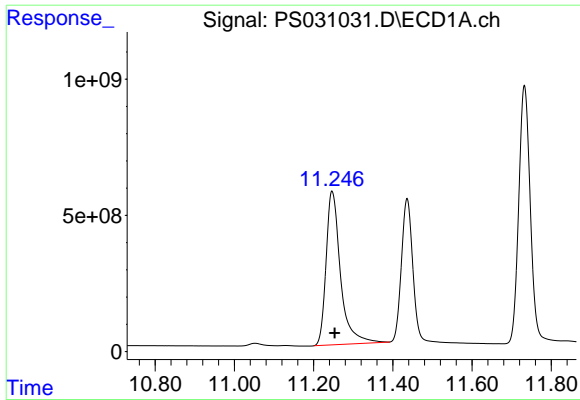
#13 2,4-DB  
 R.T.: 10.925 min  
 Delta R.T.: 0.000 min  
 Response: 778467539  
 Conc: 657.94 ng/ml



#14 DINOSEB  
 R.T.: 11.436 min  
 Delta R.T.: -0.003 min  
 Response: 10480443029  
 Conc: 794.94 ng/ml

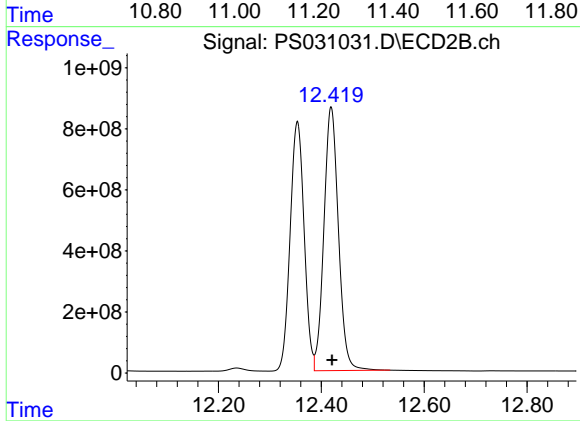


#14 DINOSEB  
 R.T.: 11.310 min  
 Delta R.T.: 0.000 min  
 Response: 7543582272  
 Conc: 664.54 ng/ml

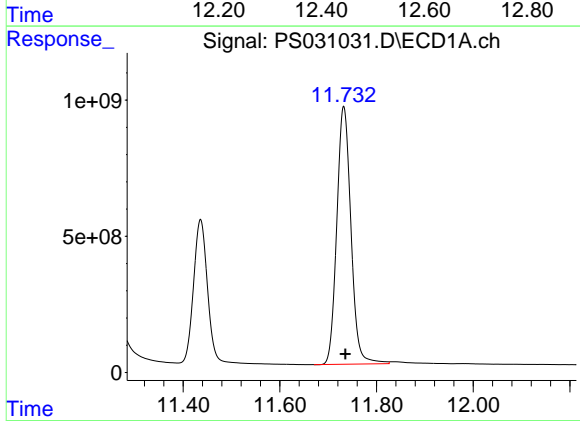


#15 Picloram  
 R.T.: 11.247 min  
 Delta R.T.: -0.007 min  
 Response: 14264411159  
 Conc: 978.90 ng/ml

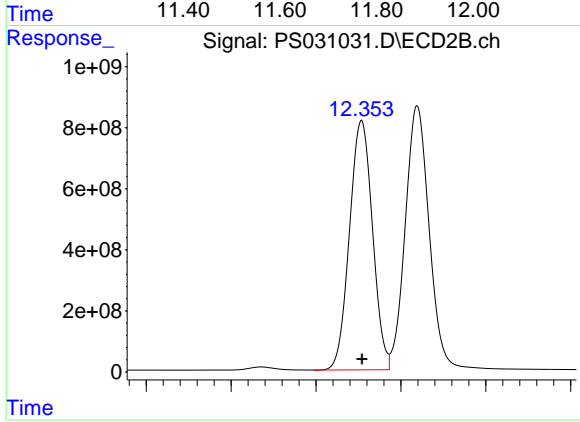
Instrument :  
 ECD\_S  
 ClientSampleId :  
 HSTDCCC750



#15 Picloram  
 R.T.: 12.419 min  
 Delta R.T.: -0.002 min  
 Response: 16907962426  
 Conc: 720.08 ng/ml



#16 DCPA  
 R.T.: 11.732 min  
 Delta R.T.: -0.004 min  
 Response: 19235632973  
 Conc: 803.59 ng/ml



#16 DCPA  
 R.T.: 12.354 min  
 Delta R.T.: 0.000 min  
 Response: 15402645908  
 Conc: 682.98 ng/ml