

Data Path : Z:\pestpcbsrv\HPCHEM1\ECD\_S\Data\PS071525\  
 Data File : PS031033.D  
 Signal(s) : Signal #1: ECD1A.ch Signal #2: ECD2B.ch  
 Acq On : 15 Jul 2025 18:45  
 Operator : AR\AJ  
 Sample : PB168844BS  
 Misc :  
 ALS Vial : 12 Sample Multiplier: 1

Instrument :  
 ECD\_S  
 ClientSampleId :  
 PB168844BS

Integration File signal 1: autoint1.e  
 Integration File signal 2: autoint2.e  
 Quant Time: Jul 16 02:49:15 2025  
 Quant Method : Z:\pestpcbsrv\HPCHEM1\ECD\_S\Method\PS071125.M  
 Quant Title : 8080.M  
 QLast Update : Mon Jul 14 05:51:06 2025  
 Response via : Initial Calibration  
 Integrator: ChemStation

Volume Inj. : 1 µl  
 Signal #1 Phase : ZB-MR1 Signal #2 Phase: ZB-MR2  
 Signal #1 Info : 30M x 0.32mm x0.5 Signal #2 Info : 30M x 0.32mm x 0.25µm

Compound	RT#1	RT#2	Resp#1	Resp#2	ng/ml	ng/ml
System Monitoring Compounds						
4) S 2,4-DCAA	7.330	7.767	1721.8E6	456.7E6	435.351	440.800
Target Compounds						
1) T Dalapon	2.688	2.708	5971.0E6	3345.0E6	980.176	1176.625
2) T 3,5-DICHL...	6.492	6.714	2256.0E6	630.4E6	430.647	406.618
3) T 4-Nitroph...	7.130	7.300	638.1E6	608.2E6	472.694	348.785 #
5) T DICAMBA	7.519	7.970	6267.2E6	2498.0E6	399.417	385.710
6) T MCPP	7.698	8.067	355.7E6	71562648	38.660	33.473
7) T MCPA	7.848	8.314	474.3E6	112.9E6	43.483	35.225
8) T DICHLORPROP	8.231	8.689	1616.3E6	577.8E6	474.665	380.286
9) T 2,4-D	8.463	9.025	1782.6E6	849.2E6	579.073	499.716
10) T Pentachlo...	8.769	9.549	25388.2E6	16926.8E6	505.122	439.257
11) T 2,4,5-TP ...	9.349	9.929	9812.7E6	7116.8E6	527.258	484.937
12) T 2,4,5-T	9.642	10.357	8663.1E6	5855.0E6	569.439	418.461 #
13) T 2,4-DB	10.221	10.924	1461.1E6	472.7E6	673.062	399.514 #
14) T DINOSEB	11.435	11.309	5233.0E6	3783.2E6	396.924	333.277
15) T Picloram	11.247	12.419	6761.3E6	7780.4E6	463.997	331.352 #
16) T DCPA	11.729	12.352	9299.9E6	8576.7E6	388.512	380.306

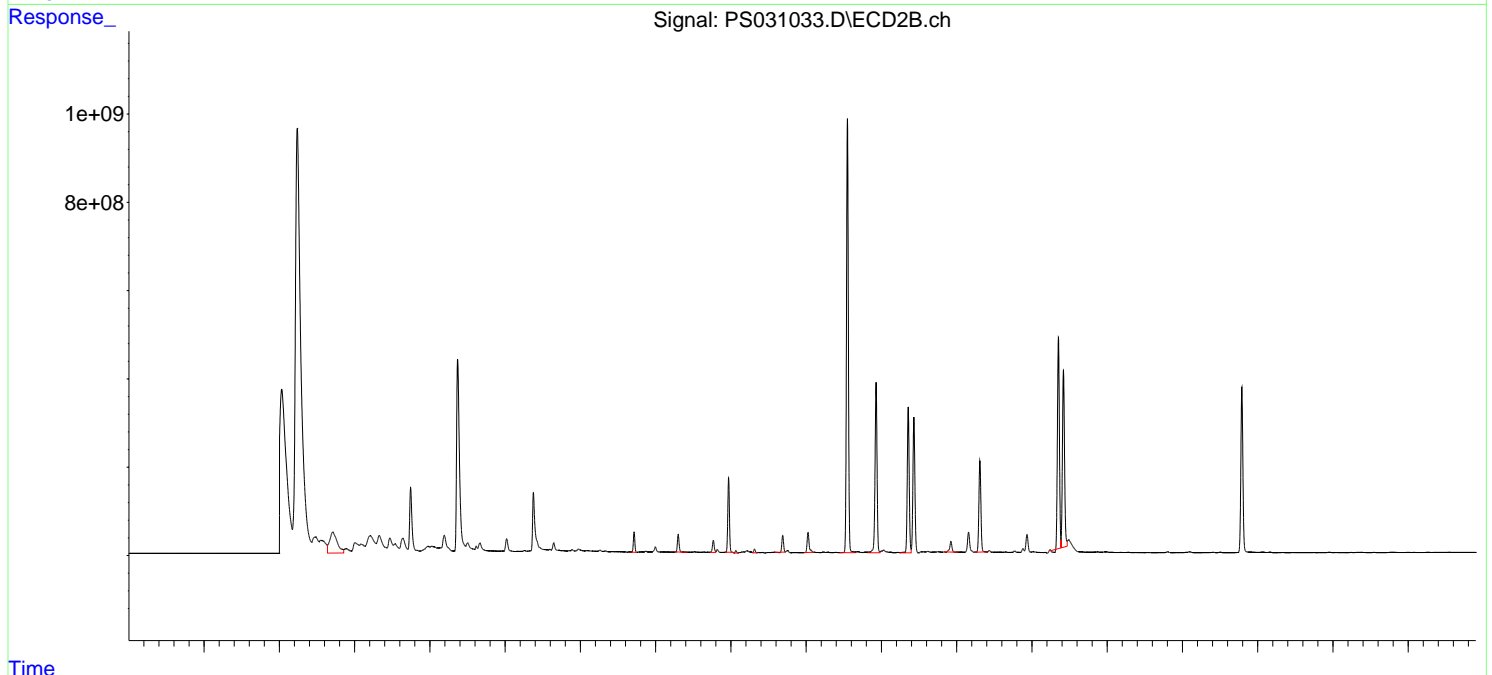
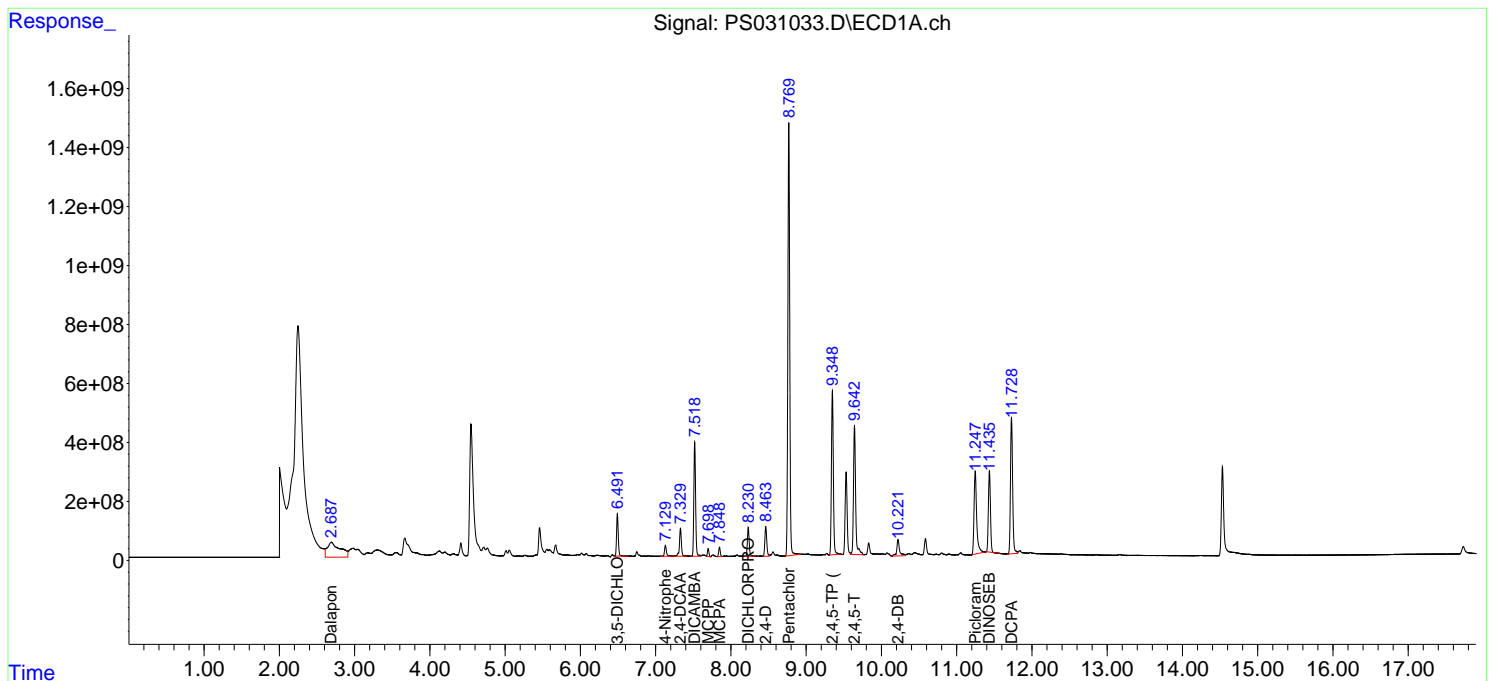
(f)=RT Delta > 1/2 Window (#)=Amounts differ by > 25% (m)=manual int.

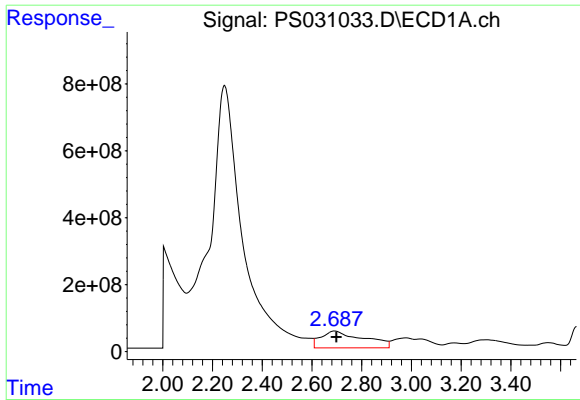
Data Path : Z:\pestpcbsrv\HPCHEM1\ECD\_S\Data\PS071525\  
 Data File : PS031033.D  
 Signal(s) : Signal #1: ECD1A.ch Signal #2: ECD2B.ch  
 Acq On : 15 Jul 2025 18:45  
 Operator : AR\AJ  
 Sample : PB168844BS  
 Misc :  
 ALS Vial : 12 Sample Multiplier: 1

Instrument :  
 ECD\_S  
 ClientSampleId :  
 PB168844BS

Integration File signal 1: autoint1.e  
 Integration File signal 2: autoint2.e  
 Quant Time: Jul 16 02:49:15 2025  
 Quant Method : Z:\pestpcbsrv\HPCHEM1\ECD\_S\Method\PS071125.M  
 Quant Title : 8080.M  
 QLast Update : Mon Jul 14 05:51:06 2025  
 Response via : Initial Calibration  
 Integrator: ChemStation

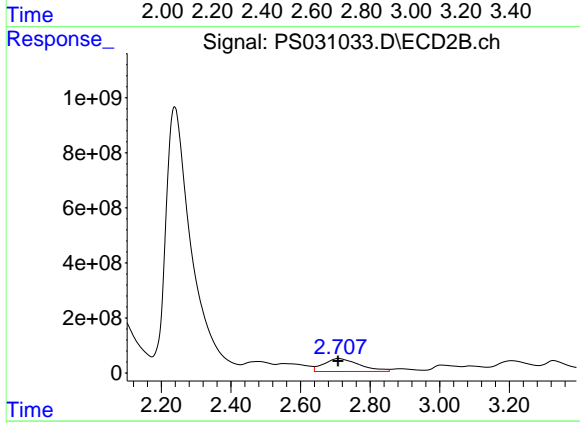
Volume Inj. : 1 µl  
 Signal #1 Phase : ZB-MR1 Signal #2 Phase: ZB-MR2  
 Signal #1 Info : 30M x 0.32mm x0.5 Signal #2 Info : 30M x 0.32mm x 0.25µm



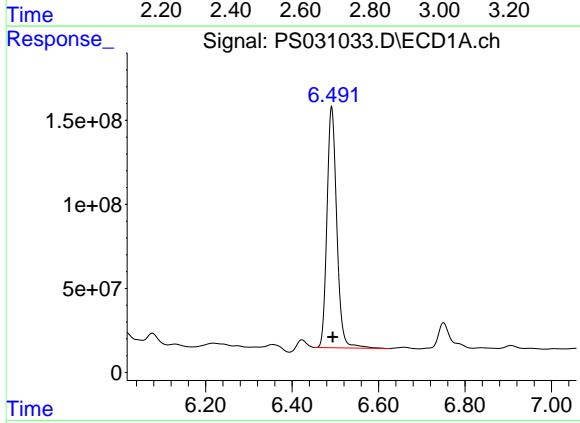


#1 Dalapon  
 R.T.: 2.688 min  
 Delta R.T.: -0.010 min  
 Response: 5970961564  
 Conc: 980.18 ng/ml

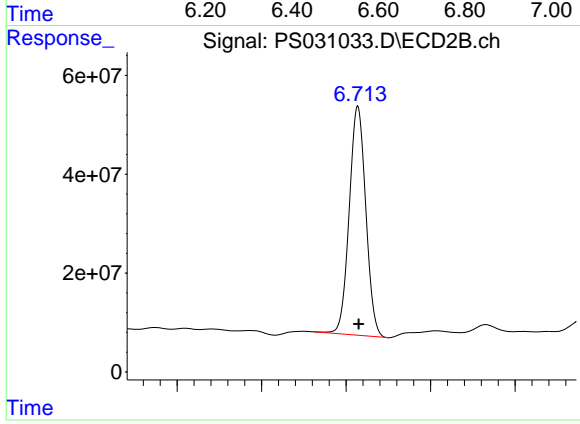
Instrument :  
 ECD\_S  
 ClientSampleId :  
 PB168844BS



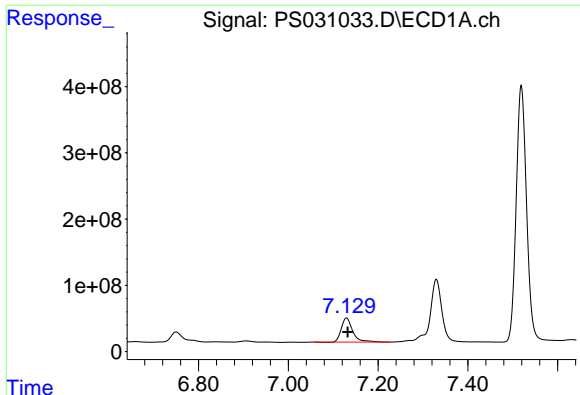
#1 Dalapon  
 R.T.: 2.708 min  
 Delta R.T.: 0.000 min  
 Response: 3344978493  
 Conc: 1176.62 ng/ml



#2 3,5-DICHLOROBENZOIC ACID  
 R.T.: 6.492 min  
 Delta R.T.: -0.002 min  
 Response: 2255988096  
 Conc: 430.65 ng/ml



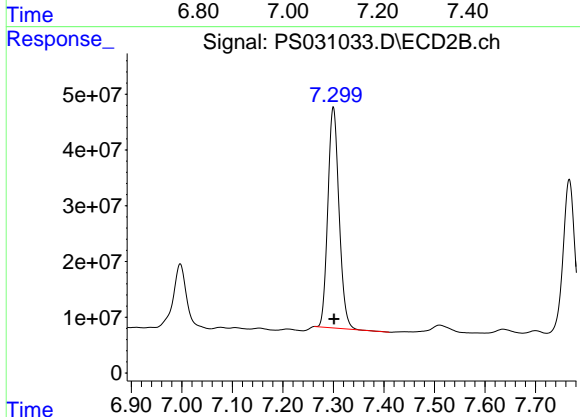
#2 3,5-DICHLOROBENZOIC ACID  
 R.T.: 6.714 min  
 Delta R.T.: -0.001 min  
 Response: 630394436  
 Conc: 406.62 ng/ml



#3 4-Nitrophenol

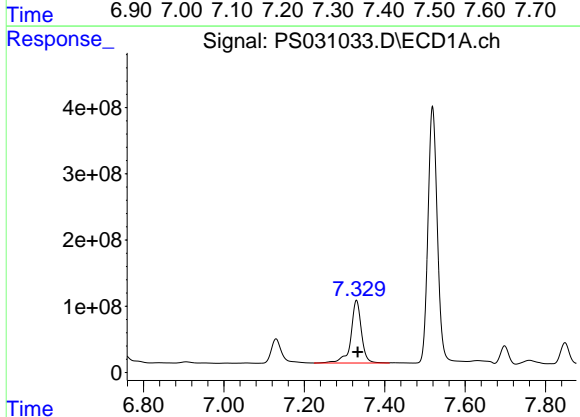
R.T.: 7.130 min  
 Delta R.T.: -0.003 min  
 Response: 638141052  
 Conc: 472.69 ng/ml

Instrument :  
 ECD\_S  
 ClientSampleId :  
 PB168844BS



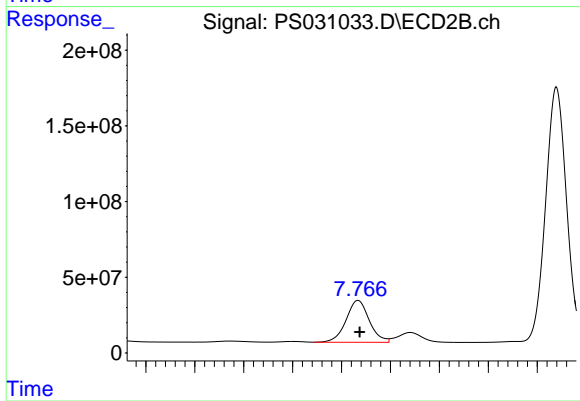
#3 4-Nitrophenol

R.T.: 7.300 min  
 Delta R.T.: -0.001 min  
 Response: 608241480  
 Conc: 348.78 ng/ml



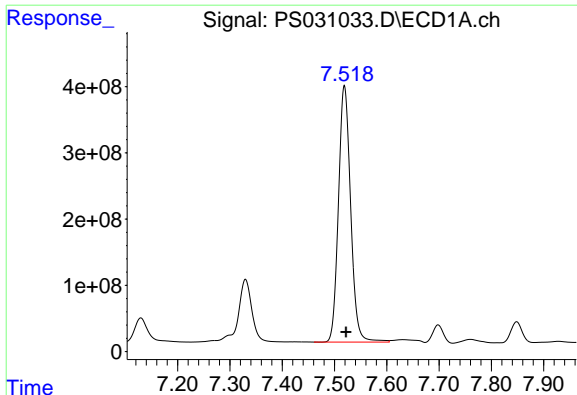
#4 2,4-DCAA

R.T.: 7.330 min  
 Delta R.T.: -0.003 min  
 Response: 1721844573  
 Conc: 435.35 ng/ml



#4 2,4-DCAA

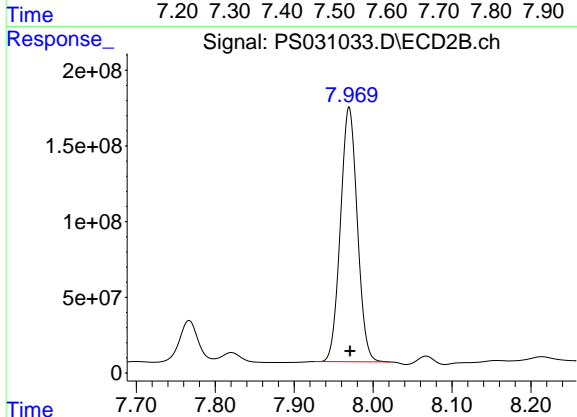
R.T.: 7.767 min  
 Delta R.T.: -0.002 min  
 Response: 456683650  
 Conc: 440.80 ng/ml



#5 DICAMBA

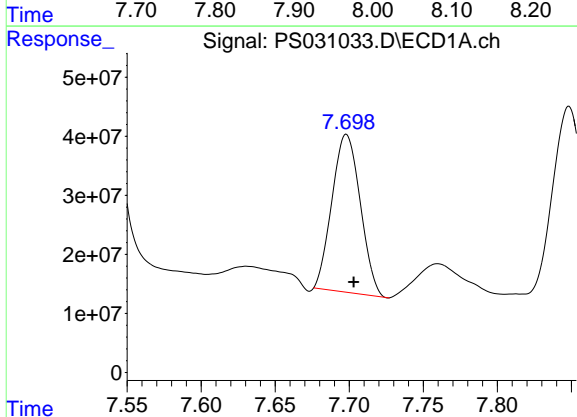
R.T.: 7.519 min  
 Delta R.T.: -0.003 min  
 Response: 6267221656  
 Conc: 399.42 ng/ml

Instrument :  
 ECD\_S  
 ClientSampleId :  
 PB168844BS



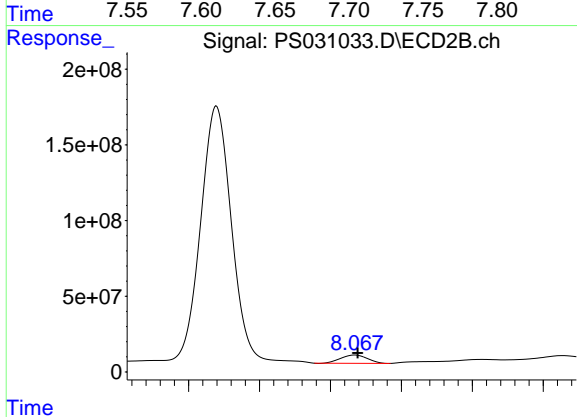
#5 DICAMBA

R.T.: 7.970 min  
 Delta R.T.: 0.000 min  
 Response: 2498020109  
 Conc: 385.71 ng/ml



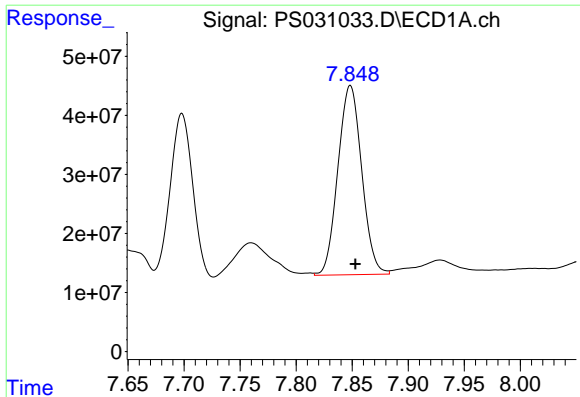
#6 MCP

R.T.: 7.698 min  
 Delta R.T.: -0.005 min  
 Response: 355724752  
 Conc: 38.66 ug/ml



#6 MCP

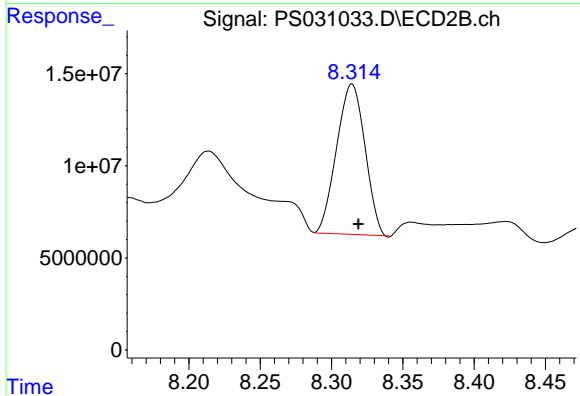
R.T.: 8.067 min  
 Delta R.T.: -0.002 min  
 Response: 71562648  
 Conc: 33.47 ug/ml



#7 MCPA

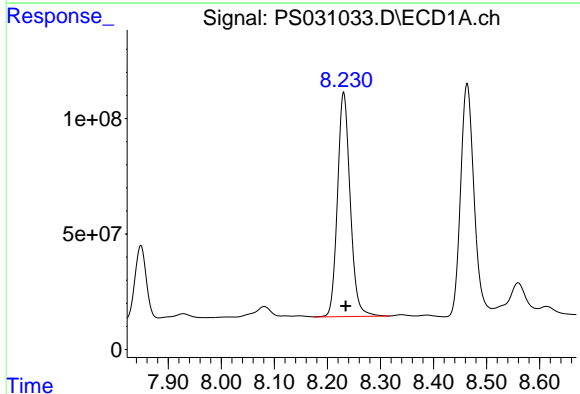
R.T.: 7.848 min  
 Delta R.T.: -0.004 min  
 Response: 474260300  
 Conc: 43.48 ug/ml

Instrument :  
 ECD\_S  
 ClientSampleId :  
 PB168844BS



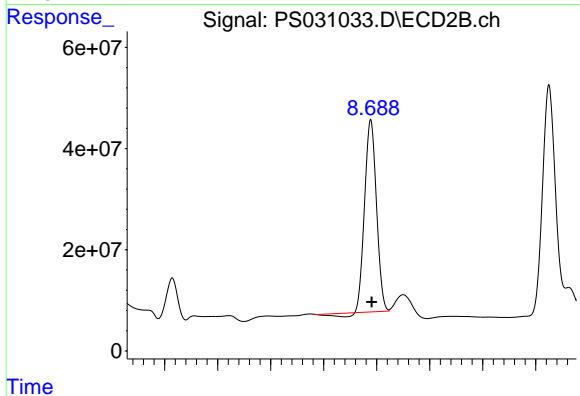
#7 MCPA

R.T.: 8.314 min  
 Delta R.T.: -0.005 min  
 Response: 112919840  
 Conc: 35.23 ug/ml



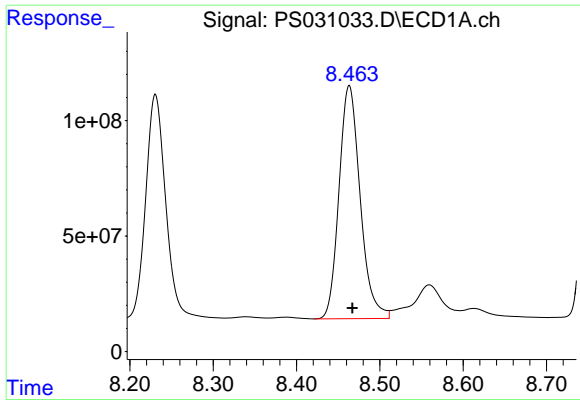
#8 DICHLORPROP

R.T.: 8.231 min  
 Delta R.T.: -0.004 min  
 Response: 1616306693  
 Conc: 474.66 ng/ml



#8 DICHLORPROP

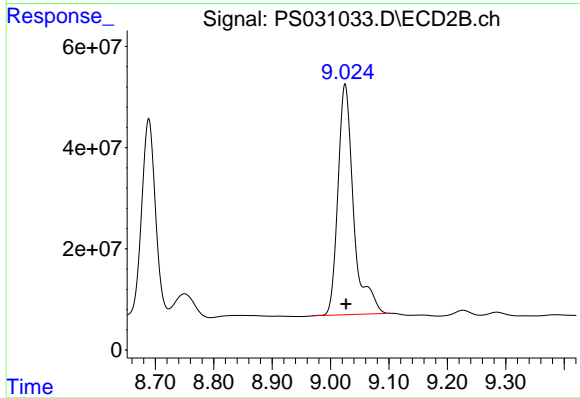
R.T.: 8.689 min  
 Delta R.T.: -0.002 min  
 Response: 577752980  
 Conc: 380.29 ng/ml



#9 2,4-D

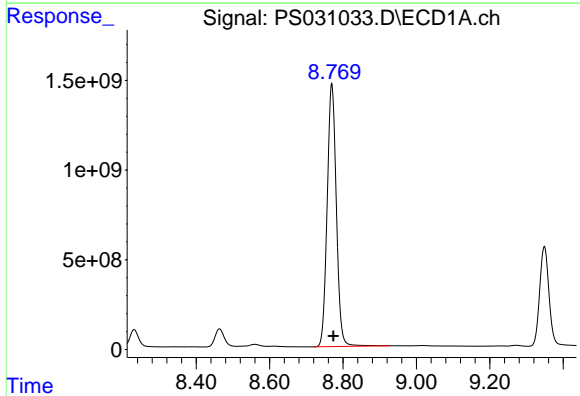
R.T.: 8.463 min  
Delta R.T.: -0.004 min  
Response: 1782639306  
Conc: 579.07 ng/ml

Instrument :  
ECD\_S  
ClientSampleId :  
PB168844BS



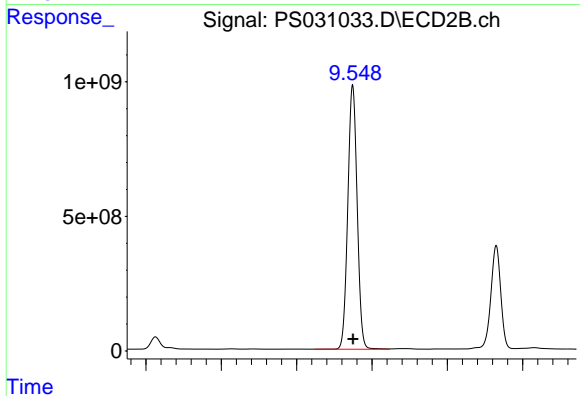
#9 2,4-D

R.T.: 9.025 min  
Delta R.T.: -0.002 min  
Response: 849249567  
Conc: 499.72 ng/ml



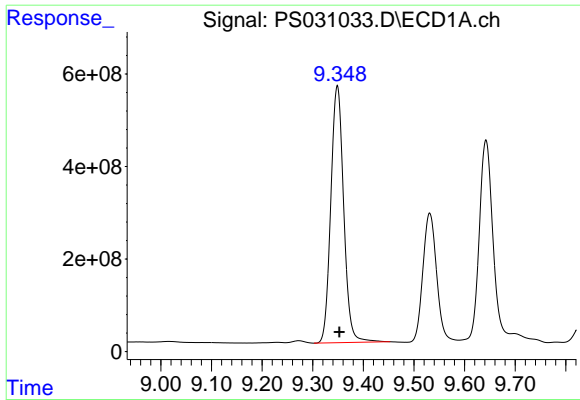
#10 Pentachlorophenol

R.T.: 8.769 min  
Delta R.T.: -0.004 min  
Response: 25388214859  
Conc: 505.12 ng/ml



#10 Pentachlorophenol

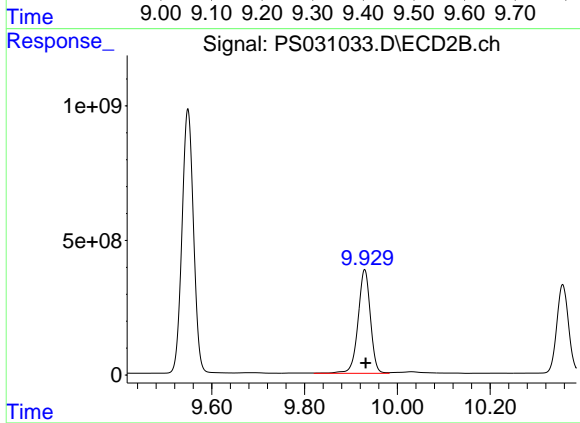
R.T.: 9.549 min  
Delta R.T.: -0.002 min  
Response: 16926804967  
Conc: 439.26 ng/ml



#11 2,4,5-TP (SILVEX)

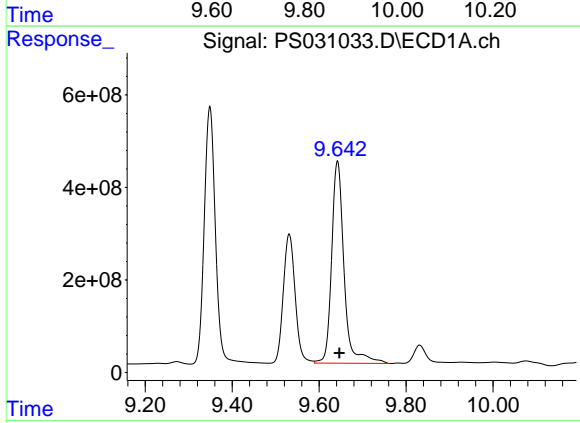
R.T.: 9.349 min  
 Delta R.T.: -0.004 min  
 Response: 9812658436  
 Conc: 527.26 ng/ml

Instrument :  
 ECD\_S  
 ClientSampleId :  
 PB168844BS



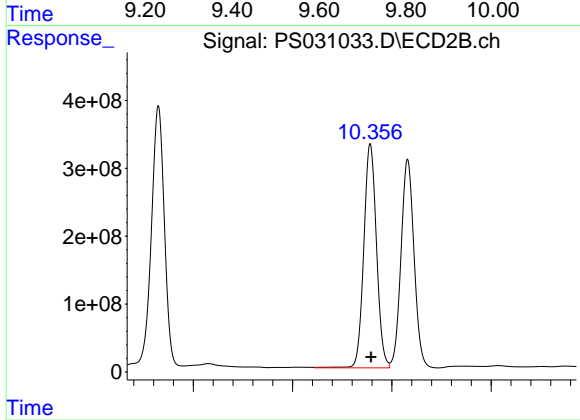
#11 2,4,5-TP (SILVEX)

R.T.: 9.929 min  
 Delta R.T.: -0.002 min  
 Response: 7116828279  
 Conc: 484.94 ng/ml



#12 2,4,5-T

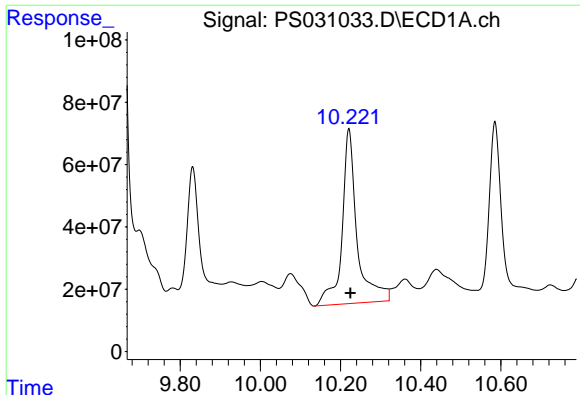
R.T.: 9.642 min  
 Delta R.T.: -0.005 min  
 Response: 8663054516  
 Conc: 569.44 ng/ml



#12 2,4,5-T

R.T.: 10.357 min  
 Delta R.T.: -0.002 min  
 Response: 5855032054  
 Conc: 418.46 ng/ml

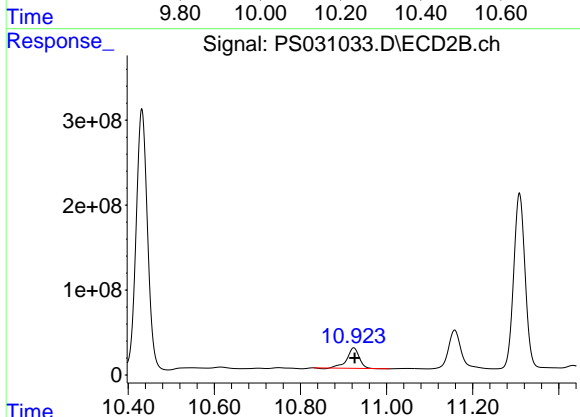




#13 2,4-DB

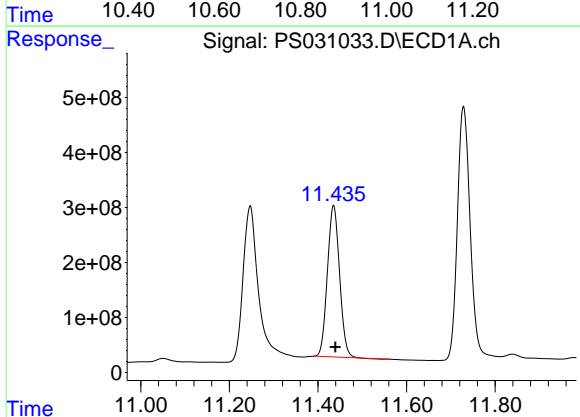
R.T.: 10.221 min  
 Delta R.T.: -0.004 min  
 Response: 1461076072  
 Conc: 673.06 ng/ml

Instrument :  
 ECD\_S  
 ClientSampleId :  
 PB168844BS



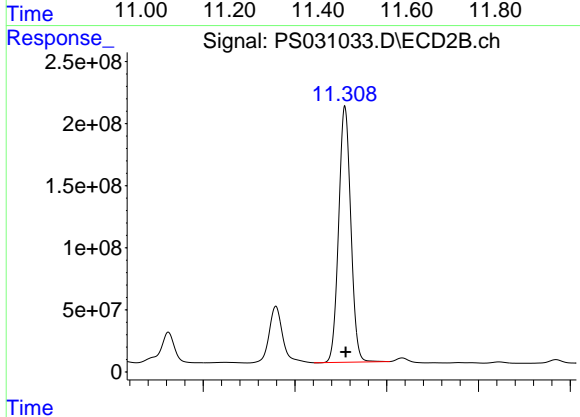
#13 2,4-DB

R.T.: 10.924 min  
 Delta R.T.: -0.002 min  
 Response: 472697887  
 Conc: 399.51 ng/ml



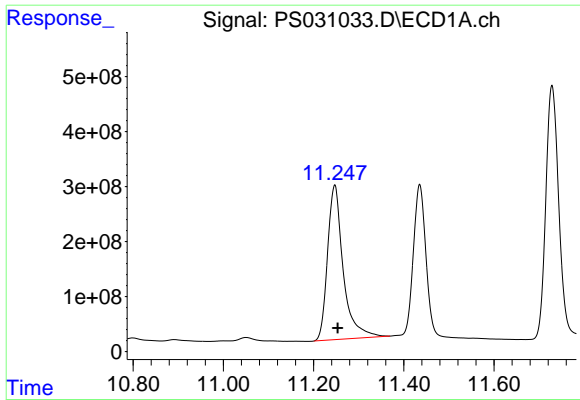
#14 DINOSEB

R.T.: 11.435 min  
 Delta R.T.: -0.004 min  
 Response: 5233013275  
 Conc: 396.92 ng/ml



#14 DINOSEB

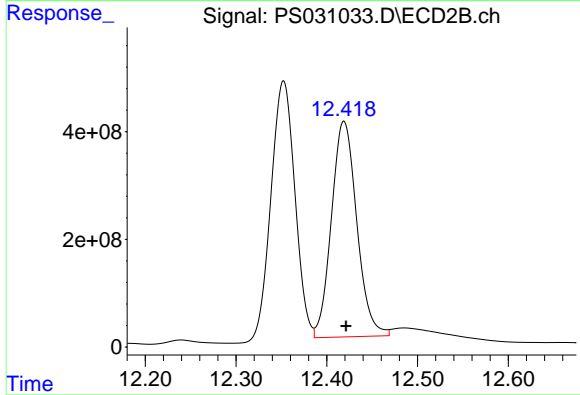
R.T.: 11.309 min  
 Delta R.T.: -0.002 min  
 Response: 3783194536  
 Conc: 333.28 ng/ml



#15 Picloram

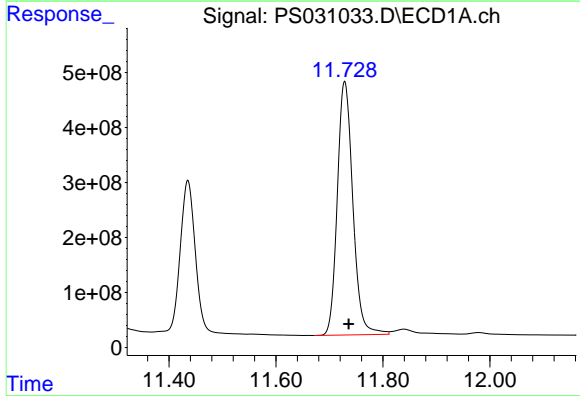
R.T.: 11.247 min  
 Delta R.T.: -0.007 min  
 Response: 6761341175  
 Conc: 464.00 ng/ml

Instrument :  
 ECD\_S  
 ClientSampleId :  
 PB168844BS



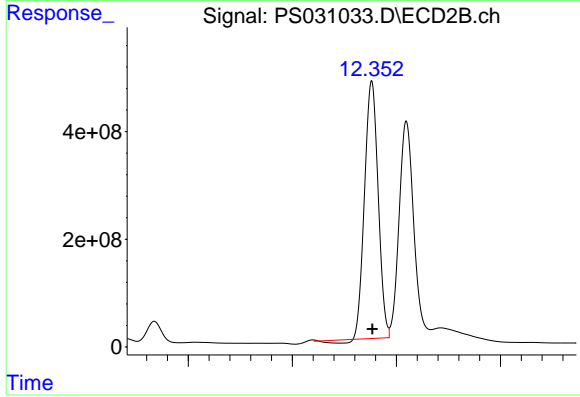
#15 Picloram

R.T.: 12.419 min  
 Delta R.T.: -0.002 min  
 Response: 7780356030  
 Conc: 331.35 ng/ml



#16 DCPA

R.T.: 11.729 min  
 Delta R.T.: -0.007 min  
 Response: 9299880178  
 Conc: 388.51 ng/ml



#16 DCPA

R.T.: 12.352 min  
 Delta R.T.: -0.002 min  
 Response: 8576652083  
 Conc: 380.31 ng/ml