

Data Path : Z:\pestpcbsrv\HPCHEM1\ECD_S\Data\PS071525\
 Data File : PS031034.D
 Signal(s) : Signal #1: ECD1A.ch Signal #2: ECD2B.ch
 Acq On : 15 Jul 2025 19:09
 Operator : AR\AJ
 Sample : PB168728TB
 Misc :
 ALS Vial : 13 Sample Multiplier: 1

Instrument :
 ECD_S
 ClientSampleId :
 PB168728TB

Integration File signal 1: autoint1.e
 Integration File signal 2: autoint2.e
 Quant Time: Jul 16 02:49:31 2025
 Quant Method : Z:\pestpcbsrv\HPCHEM1\ECD_S\Method\PS071125.M
 Quant Title : 8080.M
 QLast Update : Mon Jul 14 05:51:06 2025
 Response via : Initial Calibration
 Integrator: ChemStation

Volume Inj. : 1 µl
 Signal #1 Phase : ZB-MR1 Signal #2 Phase: ZB-MR2
 Signal #1 Info : 30M x 0.32mm x0.5 Signal #2 Info : 30M x 0.32mm x 0.25µm

Compound	RT#1	RT#2	Resp#1	Resp#2	ng/ml	ng/ml

System Monitoring Compounds						
4) S 2,4-DCAA	7.330	7.767	1828.0E6	494.2E6	462.202	477.037
Target Compounds						
1) T Dalapon	2.656f	2.684	2018.3E6	2241.0E6	331.325	788.302 #
2) T 3,5-DICHL...	6.509	6.686f	361.6E6	254.4E6	69.021	164.088 #
6) T MCPP	7.715	0.000	12506566	0	1.359	N.D. #
7) T MCPA	0.000	8.294	0	55660232	N.D.	17.363
8) T DICHLORPROP	8.241	8.670	17159612	11544019	5.039	7.598 #
10) T Pentachlo...	8.769	9.595f	10779460	37036875	<MDL	<MDL #
11) T 2,4,5-TP ...	9.357	0.000	4575815	0	<MDL	N.D. #
12) T 2,4,5-T	0.000	10.358	0	128.4E6	N.D.	9.176
13) T 2,4-DB	10.228	0.000	60508772	0	27.874	N.D. #
14) T DINOSEB	11.427	11.319	-103599	15835262	N.D.	1.395
15) T Picloram	11.242	0.000	17674034	0	1.213	N.D. #
16) T DCPA	11.701f	0.000	27672335	0	1.156	N.D. #

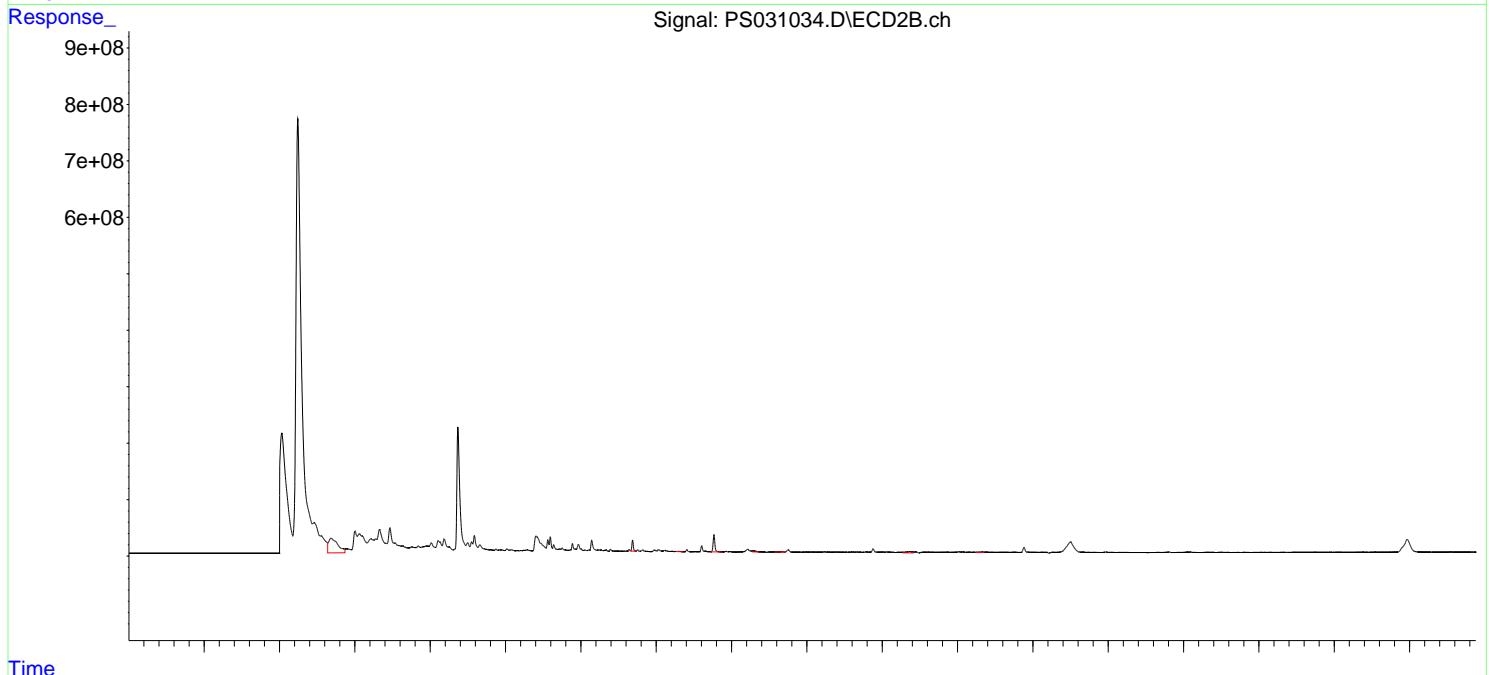
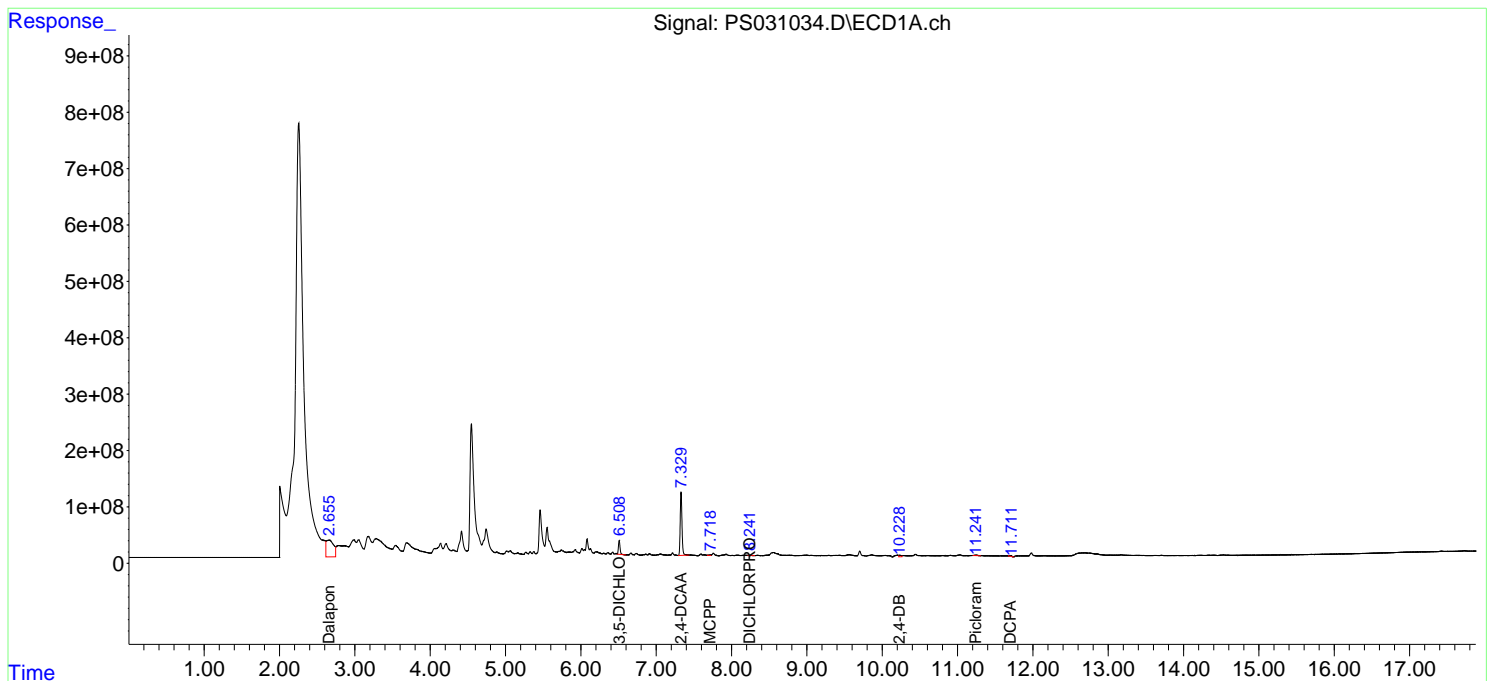
(f)=RT Delta > 1/2 Window (#)=Amounts differ by > 25% (m)=manual int.

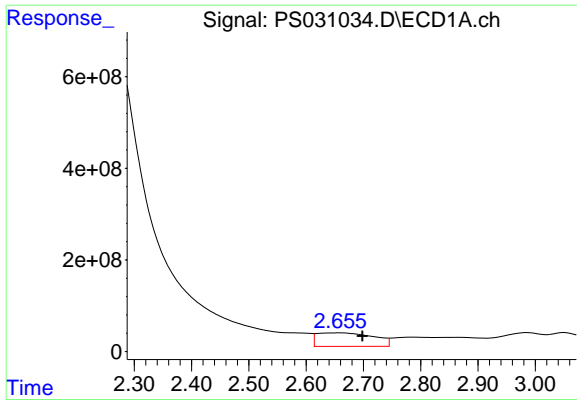
Data Path : Z:\pestpcbsrv\HPCHEM1\ECD_S\Data\PS071525\
 Data File : PS031034.D
 Signal(s) : Signal #1: ECD1A.ch Signal #2: ECD2B.ch
 Acq On : 15 Jul 2025 19:09
 Operator : AR\AJ
 Sample : PB168728TB
 Misc :
 ALS Vial : 13 Sample Multiplier: 1

Instrument :
 ECD_S
ClientSampleId :
 PB168728TB

Integration File signal 1: autoint1.e
 Integration File signal 2: autoint2.e
 Quant Time: Jul 16 02:49:31 2025
 Quant Method : Z:\pestpcbsrv\HPCHEM1\ECD_S\Method\PS071125.M
 Quant Title : 8080.M
 QLast Update : Mon Jul 14 05:51:06 2025
 Response via : Initial Calibration
 Integrator: ChemStation

Volume Inj. : 1 µl
 Signal #1 Phase : ZB-MR1 Signal #2 Phase: ZB-MR2
 Signal #1 Info : 30M x 0.32mm x0.5 Signal #2 Info : 30M x 0.32mm x 0.25µm

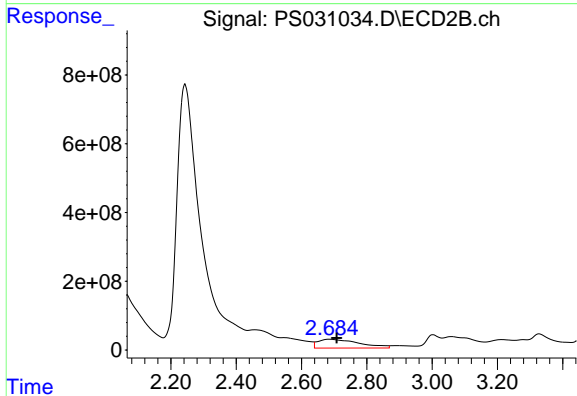




#1 Dalapon

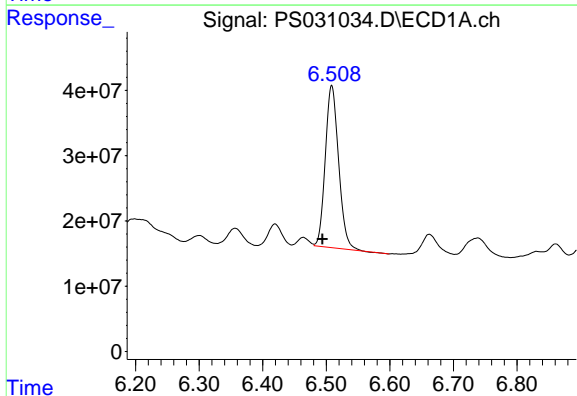
R.T.: 2.656 min
Delta R.T.: -0.042 min
Response: 2018343163
Conc: 331.33 ng/ml

Instrument :
ECD_S
ClientSampleId :
PB168728TB



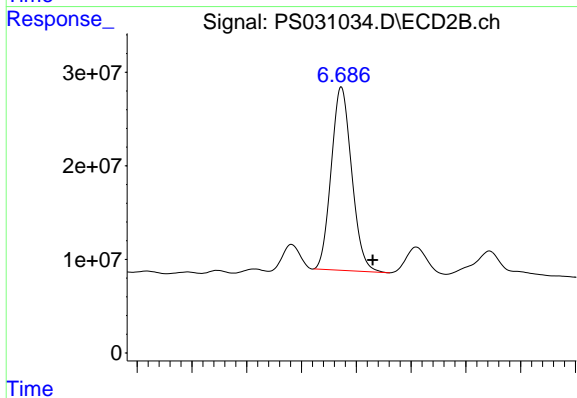
#1 Dalapon

R.T.: 2.684 min
Delta R.T.: -0.025 min
Response: 2241031758
Conc: 788.30 ng/ml



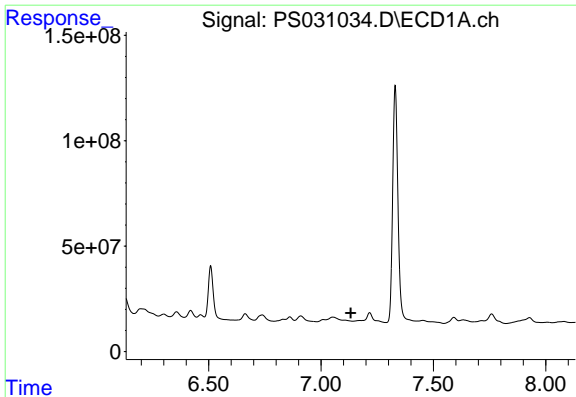
#2 3,5-DICHLOROBENZOIC ACID

R.T.: 6.509 min
Delta R.T.: 0.015 min
Response: 361571985
Conc: 69.02 ng/ml



#2 3,5-DICHLOROBENZOIC ACID

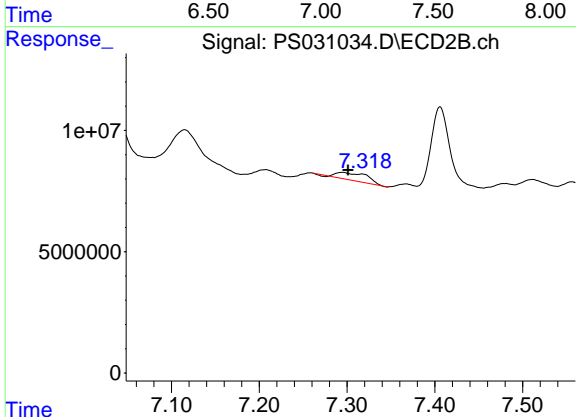
R.T.: 6.686 min
Delta R.T.: -0.028 min
Response: 254391700
Conc: 164.09 ng/ml



#3 4-Nitrophenol

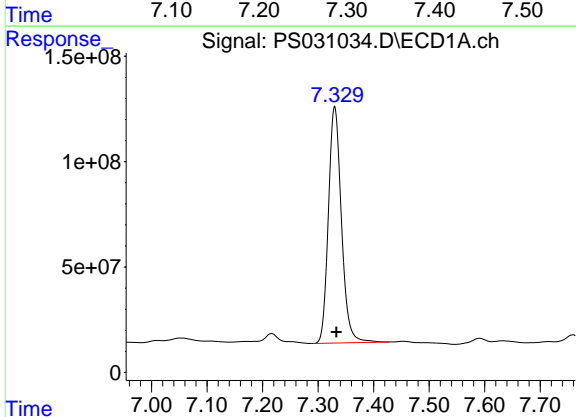
R.T.: 7.105 min
 Delta R.T.: -0.027 min
 Response: -6713570
 Conc: N.D.

Instrument :
 ECD_S
 ClientSampleId :
 PB168728TB



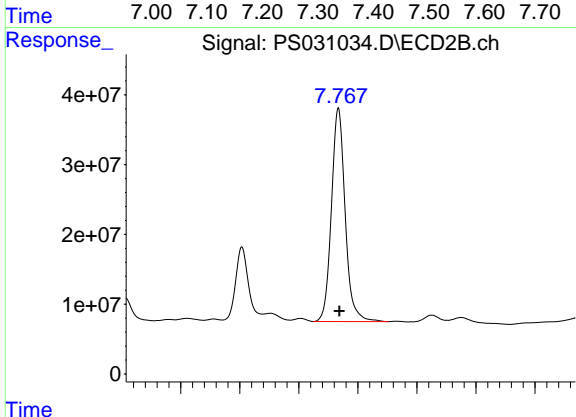
#3 4-Nitrophenol

R.T.: 7.294 min
 Delta R.T.: -0.007 min
 Response: 7266066
 Conc: 4.17 ng/ml



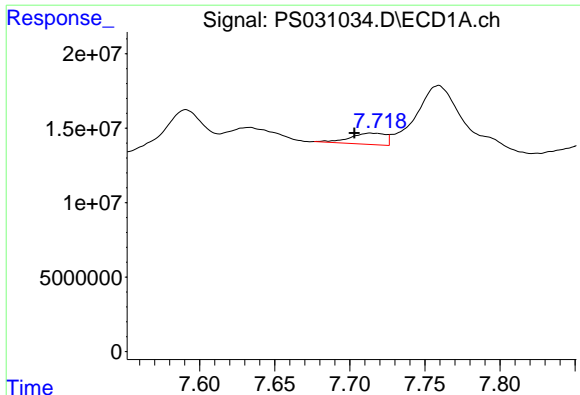
#4 2,4-DCAA

R.T.: 7.330 min
 Delta R.T.: -0.003 min
 Response: 1828043611
 Conc: 462.20 ng/ml



#4 2,4-DCAA

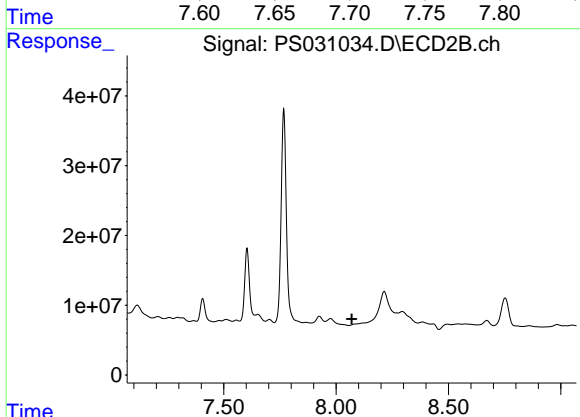
R.T.: 7.767 min
 Delta R.T.: -0.002 min
 Response: 494225798
 Conc: 477.04 ng/ml



#6 MCPP

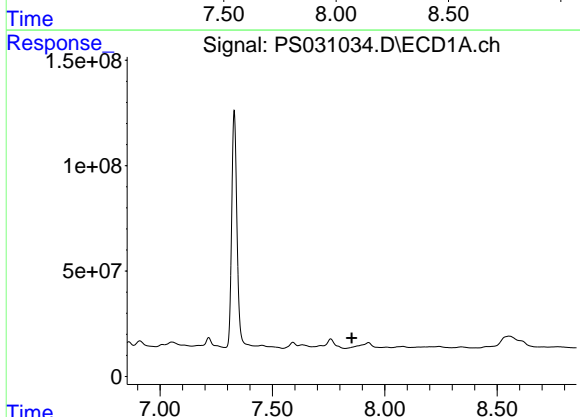
R.T.: 7.715 min
 Delta R.T.: 0.012 min
 Response: 12506566
 Conc: 1.36 ug/ml

Instrument :
 ECD_S
 ClientSampleId :
 PB168728TB



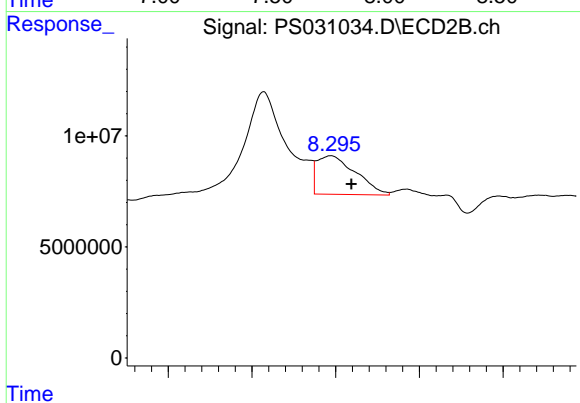
#6 MCPP

R.T.: 0.000 min
 Exp R.T. : 8.069 min
 Response: 0
 Conc: N.D.



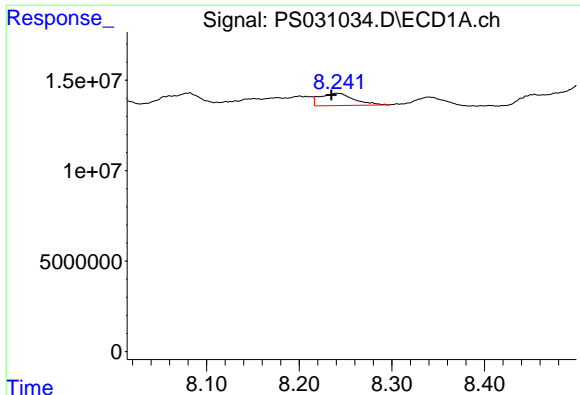
#7 MCPA

R.T.: 0.000 min
 Exp R.T. : 7.853 min
 Response: 0
 Conc: N.D.



#7 MCPA

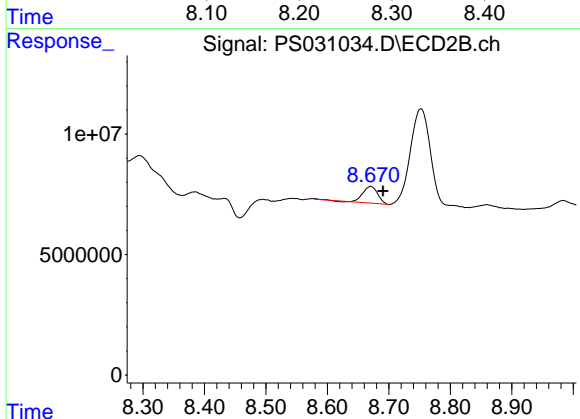
R.T.: 8.294 min
 Delta R.T.: -0.025 min
 Response: 55660232
 Conc: 17.36 ug/ml



#8 DICHLORPROP

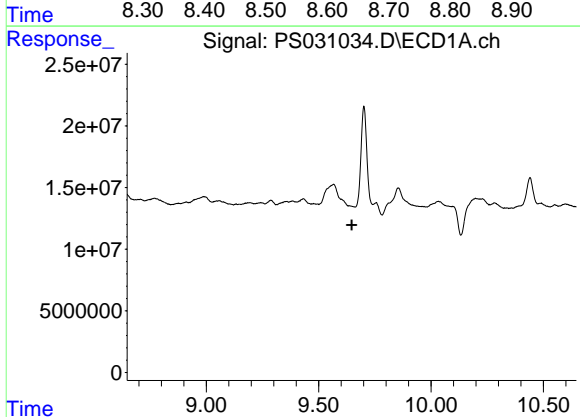
R.T.: 8.241 min
 Delta R.T.: 0.006 min
 Response: 17159612
 Conc: 5.04 ng/ml

Instrument :
 ECD_S
 ClientSampleId :
 PB168728TB



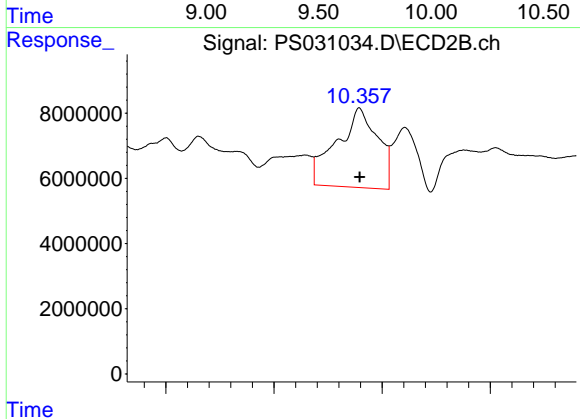
#8 DICHLORPROP

R.T.: 8.670 min
 Delta R.T.: -0.020 min
 Response: 11544019
 Conc: 7.60 ng/ml



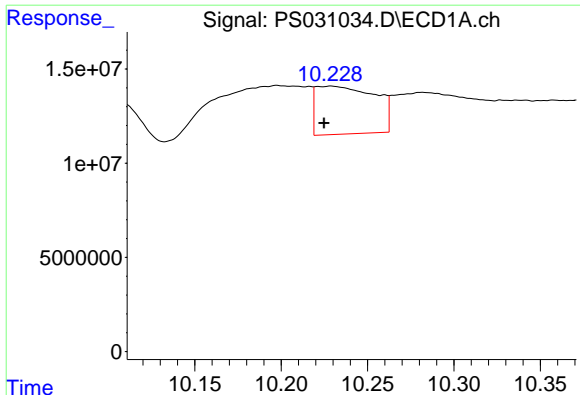
#12 2,4,5-T

R.T.: 0.000 min
 Exp R.T. : 9.647 min
 Response: 0
 Conc: N.D.



#12 2,4,5-T

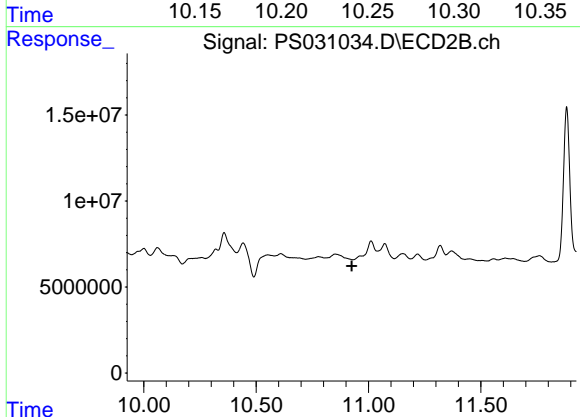
R.T.: 10.358 min
 Delta R.T.: 0.000 min
 Response: 128385272
 Conc: 9.18 ng/ml



#13 2,4-DB

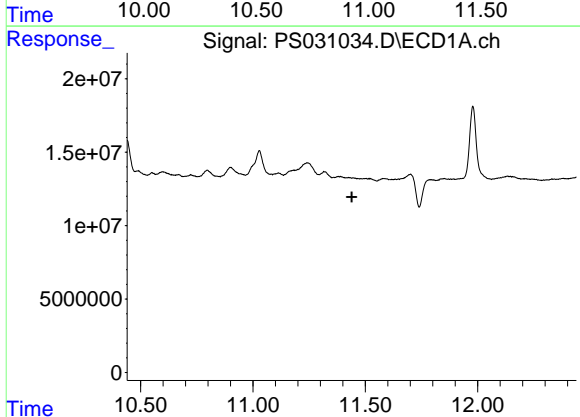
R.T.: 10.228 min
 Delta R.T.: 0.003 min
 Response: 60508772
 Conc: 27.87 ng/ml

Instrument :
 ECD_S
 ClientSampleId :
 PB168728TB



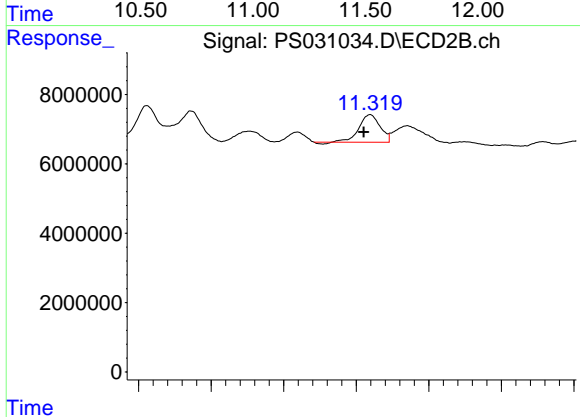
#13 2,4-DB

R.T.: 0.000 min
 Exp R.T. : 10.926 min
 Response: 0
 Conc: N.D.



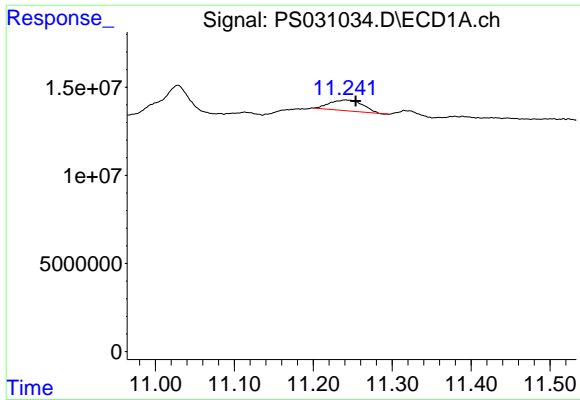
#14 DINOSEB

R.T.: 11.427 min
 Delta R.T.: -0.013 min
 Response: -103599
 Conc: N.D.



#14 DINOSEB

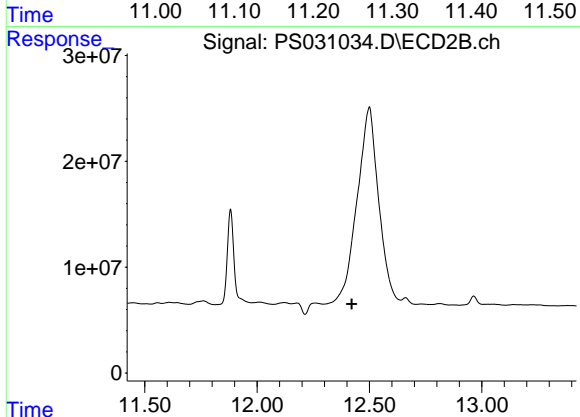
R.T.: 11.319 min
 Delta R.T.: 0.008 min
 Response: 15835262
 Conc: 1.39 ng/ml



#15 Picloram

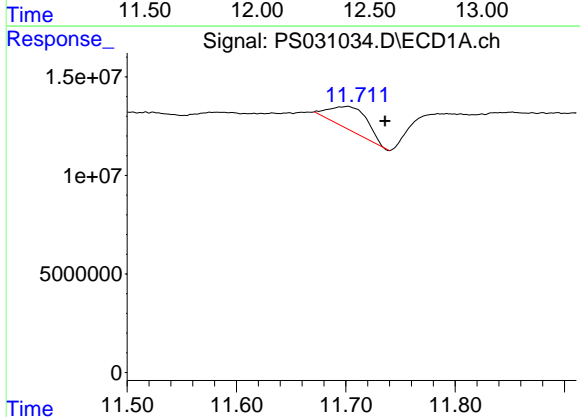
R.T.: 11.242 min
 Delta R.T.: -0.012 min
 Response: 17674034
 Conc: 1.21 ng/ml

Instrument :
 ECD_S
 ClientSampleId :
 PB168728TB



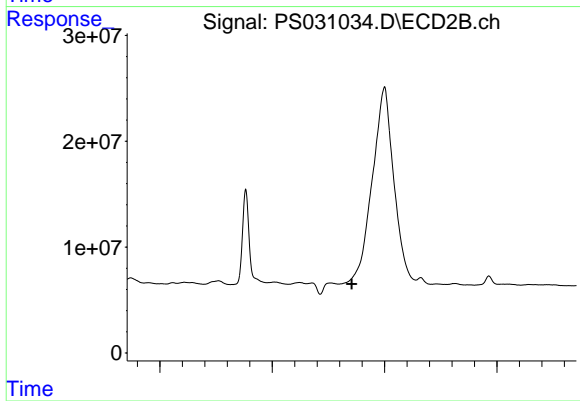
#15 Picloram

R.T.: 0.000 min
 Exp R.T. : 12.421 min
 Response: 0
 Conc: N.D.



#16 DCPA

R.T.: 11.701 min
 Delta R.T.: -0.035 min
 Response: 27672335
 Conc: 1.16 ng/ml



#16 DCPA

R.T.: 0.000 min
 Exp R.T. : 12.354 min
 Response: 0
 Conc: N.D.