

Data Path : Z:\pestpcbsrv\HPCHEM1\ECD_S\Data\PS071525\
 Data File : PS031038.D
 Signal(s) : Signal #1: ECD1A.ch Signal #2: ECD2B.ch
 Acq On : 15 Jul 2025 20:46
 Operator : AR\AJ
 Sample : Q2489-01MSD
 Misc :
 ALS Vial : 17 Sample Multiplier: 1

Instrument :
 ECD_S
 ClientSampleId :
 G4(0-6)MSD

Integration File signal 1: autoint1.e
 Integration File signal 2: autoint2.e
 Quant Time: Jul 16 02:50:29 2025
 Quant Method : Z:\pestpcbsrv\HPCHEM1\ECD_S\Method\PS071125.M
 Quant Title : 8080.M
 QLast Update : Mon Jul 14 05:51:06 2025
 Response via : Initial Calibration
 Integrator: ChemStation

Volume Inj. : 1 µl
 Signal #1 Phase : ZB-MR1 Signal #2 Phase: ZB-MR2
 Signal #1 Info : 30M x 0.32mm x0.5 Signal #2 Info : 30M x 0.32mm x 0.25µm

Compound	RT#1	RT#2	Resp#1	Resp#2	ng/ml	ng/ml

System Monitoring Compounds						
4) S 2,4-DCAA	7.328	7.766	2515.8E6	565.6E6	636.095	545.959
Target Compounds						
1) T Dalapon	2.691	2.704	3041.8E6	3470.7E6	499.341	1220.847 #
2) T 3,5-DICHL...	6.491	6.714	2254.9E6	616.9E6	430.435	397.893
3) T 4-Nitroph...	7.129	7.317	19194908	44253616	14.218	25.376 #
5) T DICAMBA	7.518	7.969	6087.8E6	2400.2E6	387.981	370.606
6) T MCPP	7.697	8.067	335.7E6	73868397	36.484	34.551
7) T MCPA	7.847	8.314	455.9E6	174.8E6	41.798	54.543 #
8) T DICHLORPROP	8.230	8.688	1686.3E6	571.9E6	495.231	376.463
9) T 2,4-D	8.461	9.024	1840.1E6	840.7E6	597.731	494.707
10) T Pentachlo...	8.768	9.549	21403.8E6	13874.5E6	425.849	360.048
11) T 2,4,5-TP ...	9.347	9.930	10333.1E6	8756.8E6	555.222	596.683
12) T 2,4,5-T	9.641	10.357	8350.3E6	5900.4E6	548.878	421.702
13) T 2,4-DB	10.219	10.923	1148.9E6	514.1E6	529.262	434.544
14) T DINOSEB	11.433	11.310	3853.2E6	3661.8E6	292.262	322.585
15) T Picloram	11.244	12.418	7650.1E6	8567.8E6	524.985	364.888 #
16) T DCPA	11.729	12.352	10746.9E6	7993.4E6	448.963	354.442

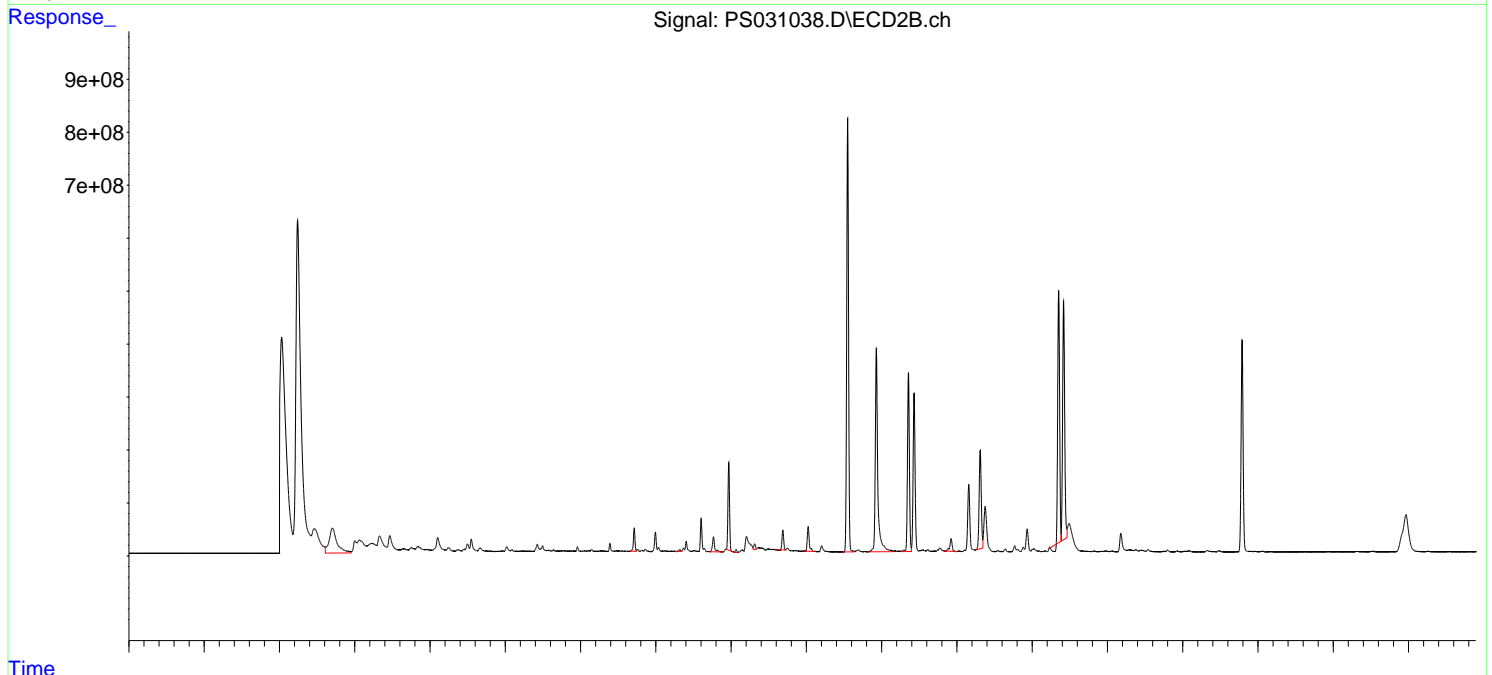
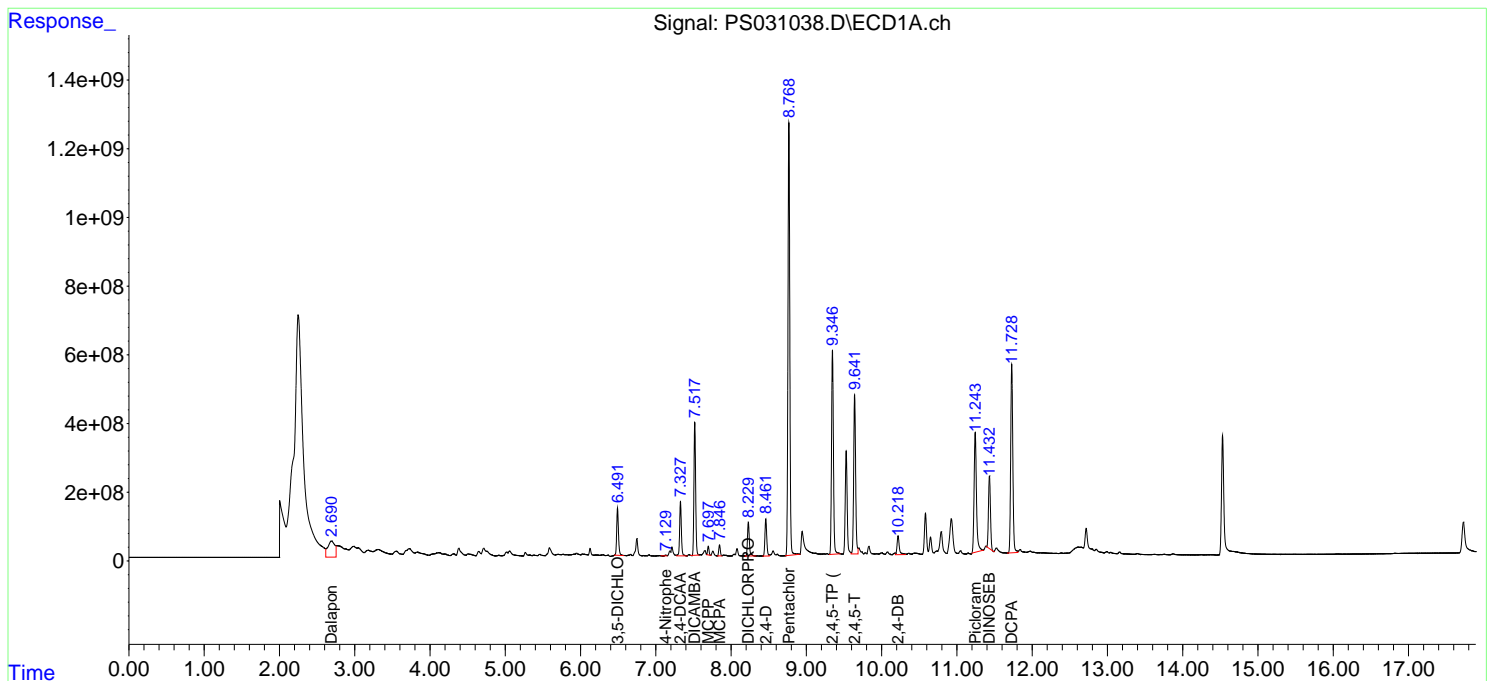
(f)=RT Delta > 1/2 Window (#)=Amounts differ by > 25% (m)=manual int.

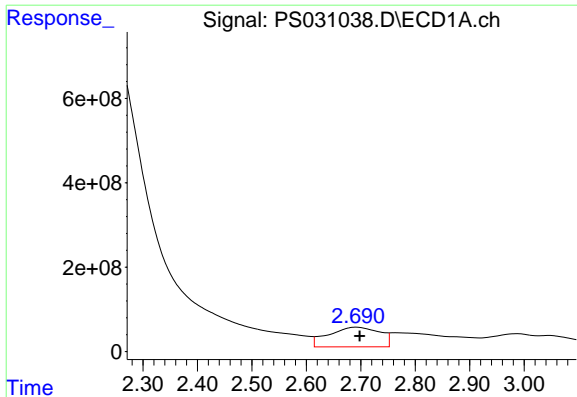
Data Path : Z:\pestpcbsrv\HPCHEM1\ECD_S\Data\PS071525\
 Data File : PS031038.D
 Signal(s) : Signal #1: ECD1A.ch Signal #2: ECD2B.ch
 Acq On : 15 Jul 2025 20:46
 Operator : AR\AJ
 Sample : Q2489-01MSD
 Misc :
 ALS Vial : 17 Sample Multiplier: 1

Instrument :
 ECD_S
 ClientSampleId :
 G4(0-6)MSD

Integration File signal 1: autoint1.e
 Integration File signal 2: autoint2.e
 Quant Time: Jul 16 02:50:29 2025
 Quant Method : Z:\pestpcbsrv\HPCHEM1\ECD_S\Method\PS071125.M
 Quant Title : 8080.M
 QLast Update : Mon Jul 14 05:51:06 2025
 Response via : Initial Calibration
 Integrator: ChemStation

Volume Inj. : 1 µl
 Signal #1 Phase : ZB-MR1 Signal #2 Phase: ZB-MR2
 Signal #1 Info : 30M x 0.32mm x 0.5 Signal #2 Info : 30M x 0.32mm x 0.25µm

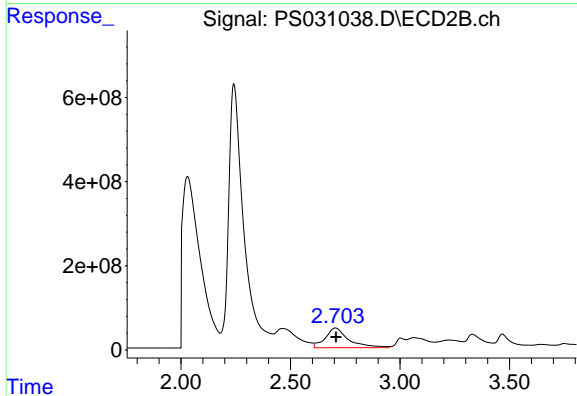




#1 Dalapon

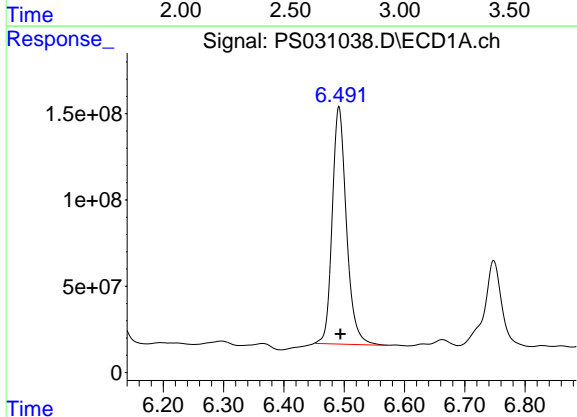
R.T.: 2.691 min
 Delta R.T.: -0.007 min
 Response: 3041845800
 Conc: 499.34 ng/ml

Instrument :
 ECD_S
 ClientSampleId :
 G4(0-6)MSD



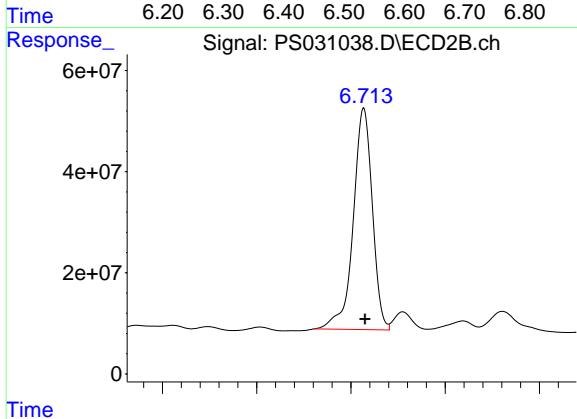
#1 Dalapon

R.T.: 2.704 min
 Delta R.T.: -0.004 min
 Response: 3470695968
 Conc: 1220.85 ng/ml



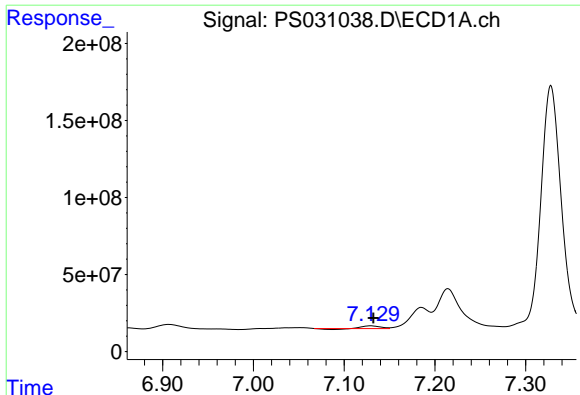
#2 3,5-DICHLOROBENZOIC ACID

R.T.: 6.491 min
 Delta R.T.: -0.003 min
 Response: 2254879176
 Conc: 430.44 ng/ml



#2 3,5-DICHLOROBENZOIC ACID

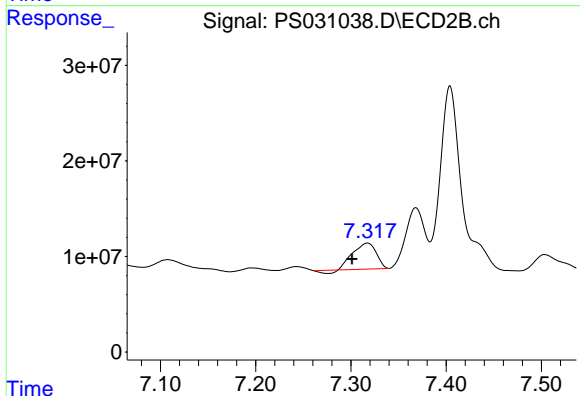
R.T.: 6.714 min
 Delta R.T.: -0.001 min
 Response: 616867766
 Conc: 397.89 ng/ml



#3 4-Nitrophenol

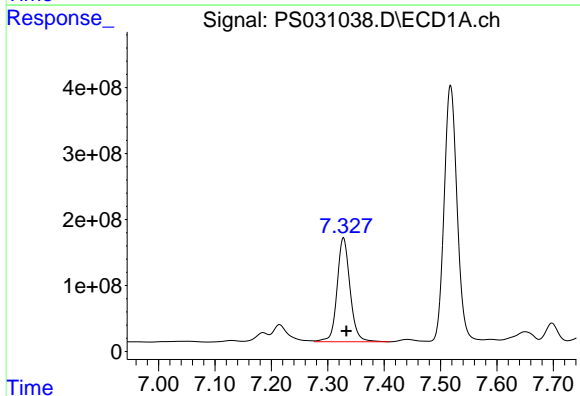
R.T.: 7.129 min
 Delta R.T.: -0.003 min
 Response: 19194908
 Conc: 14.22 ng/ml

Instrument :
 ECD_S
 ClientSampleId :
 G4(0-6)MSD



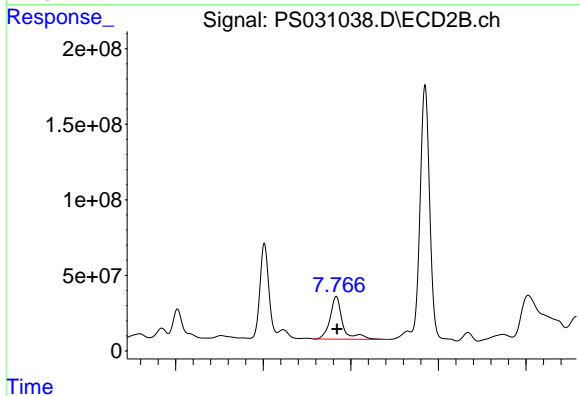
#3 4-Nitrophenol

R.T.: 7.317 min
 Delta R.T.: 0.016 min
 Response: 44253616
 Conc: 25.38 ng/ml



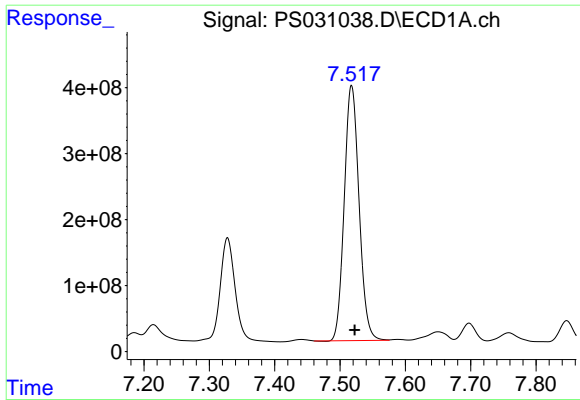
#4 2,4-DCAA

R.T.: 7.328 min
 Delta R.T.: -0.005 min
 Response: 2515805120
 Conc: 636.10 ng/ml



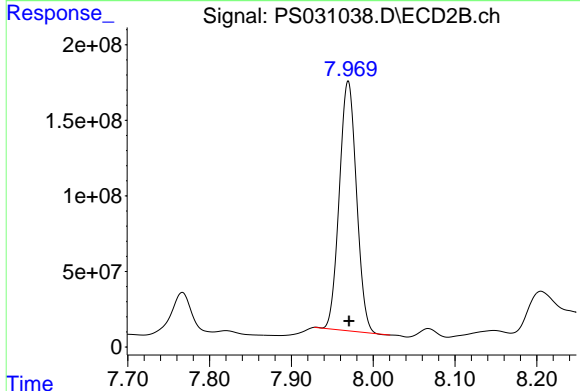
#4 2,4-DCAA

R.T.: 7.766 min
 Delta R.T.: -0.002 min
 Response: 565631644
 Conc: 545.96 ng/ml

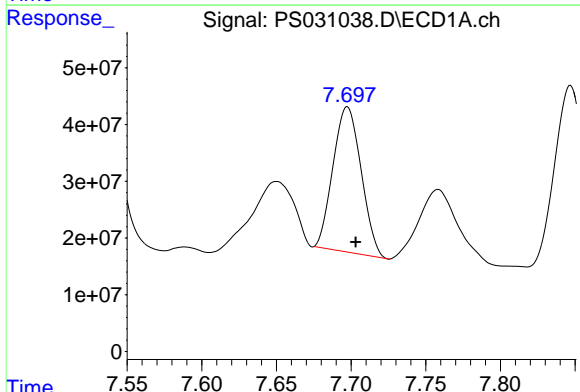


#5 DICAMBA
 R.T.: 7.518 min
 Delta R.T.: -0.005 min
 Response: 6087773805
 Conc: 387.98 ng/ml

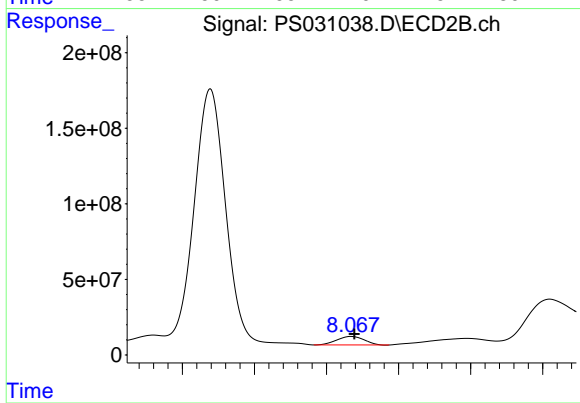
Instrument :
 ECD_S
 ClientSampleId :
 G4(0-6)MSD



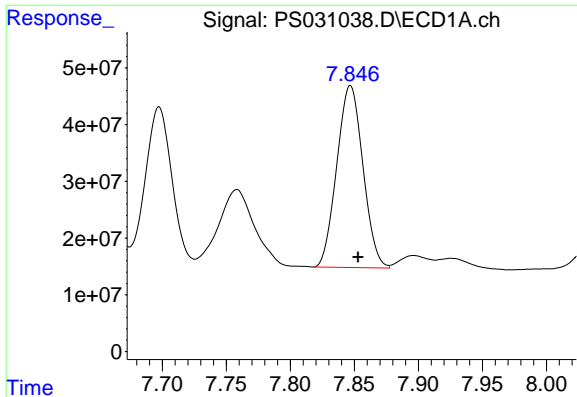
#5 DICAMBA
 R.T.: 7.969 min
 Delta R.T.: -0.001 min
 Response: 2400201516
 Conc: 370.61 ng/ml



#6 MCP
 R.T.: 7.697 min
 Delta R.T.: -0.006 min
 Response: 335702581
 Conc: 36.48 ug/ml



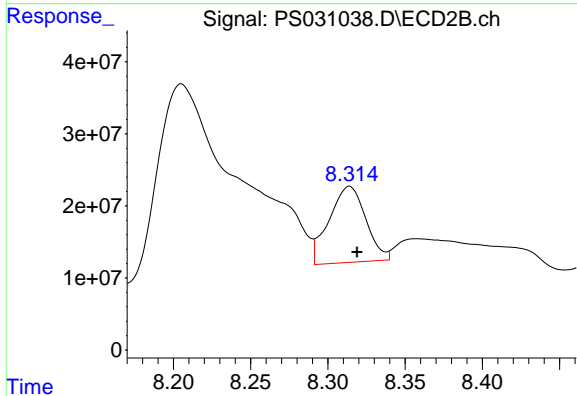
#6 MCP
 R.T.: 8.067 min
 Delta R.T.: -0.002 min
 Response: 73868397
 Conc: 34.55 ug/ml



#7 MCPA

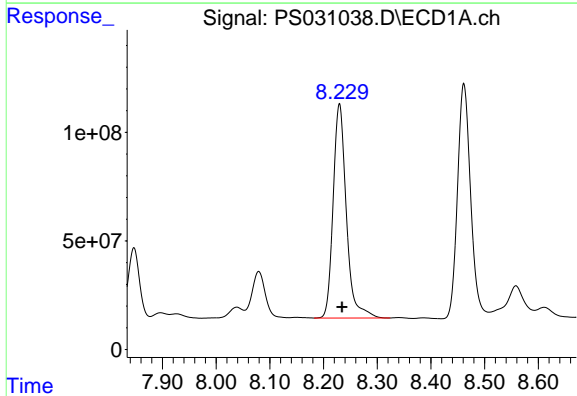
R.T.: 7.847 min
 Delta R.T.: -0.006 min
 Response: 455876714
 Conc: 41.80 ug/ml

Instrument :
 ECD_S
 ClientSampleId :
 G4(0-6)MSD



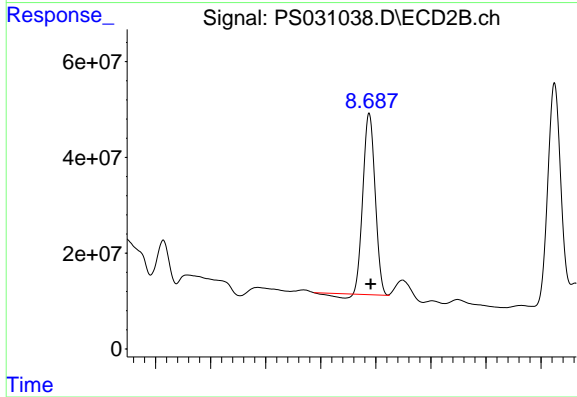
#7 MCPA

R.T.: 8.314 min
 Delta R.T.: -0.005 min
 Response: 174845581
 Conc: 54.54 ug/ml



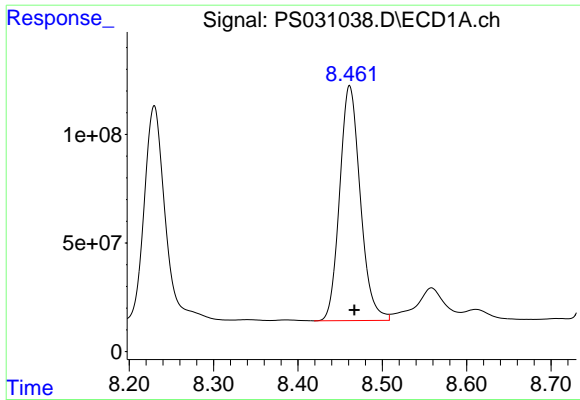
#8 DICHLORPROP

R.T.: 8.230 min
 Delta R.T.: -0.005 min
 Response: 1686339726
 Conc: 495.23 ng/ml



#8 DICHLORPROP

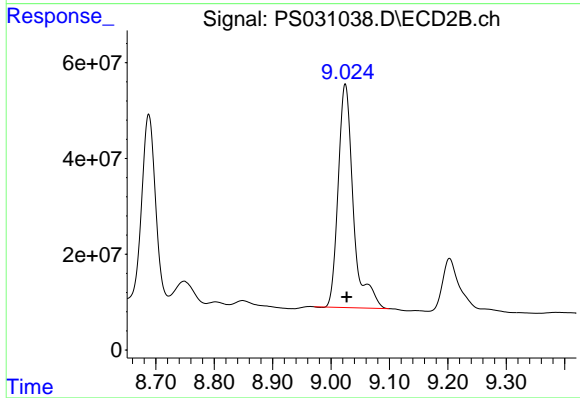
R.T.: 8.688 min
 Delta R.T.: -0.003 min
 Response: 571946101
 Conc: 376.46 ng/ml



#9 2,4-D

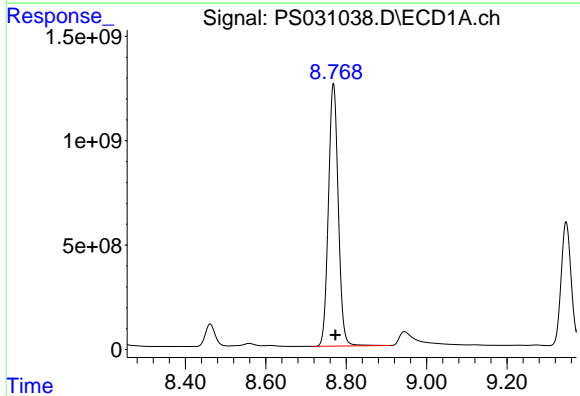
R.T.: 8.461 min
 Delta R.T.: -0.006 min
 Response: 1840075137
 Conc: 597.73 ng/ml

Instrument :
 ECD_S
 ClientSampleId :
 G4(0-6)MSD



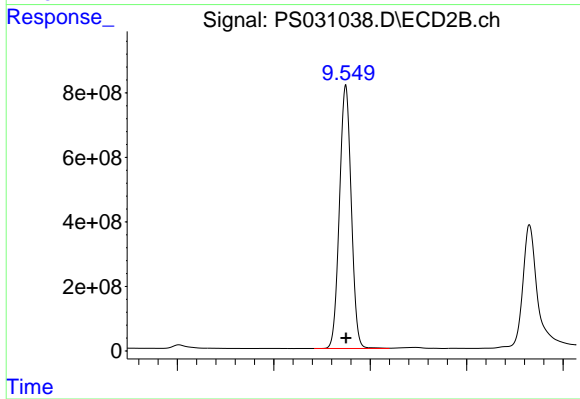
#9 2,4-D

R.T.: 9.024 min
 Delta R.T.: -0.002 min
 Response: 840737203
 Conc: 494.71 ng/ml



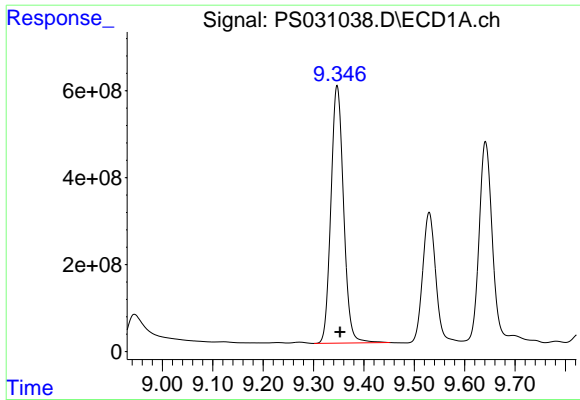
#10 Pentachlorophenol

R.T.: 8.768 min
 Delta R.T.: -0.005 min
 Response: 21403833052
 Conc: 425.85 ng/ml



#10 Pentachlorophenol

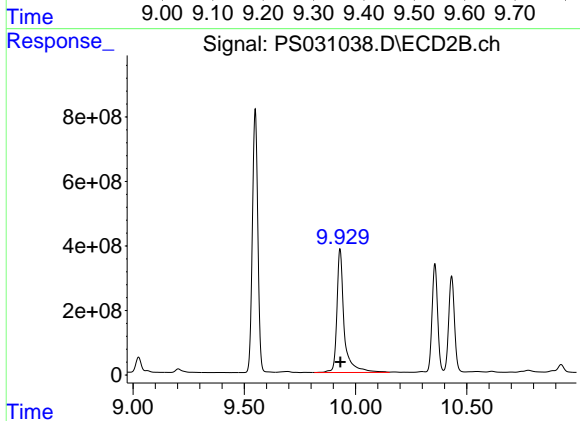
R.T.: 9.549 min
 Delta R.T.: -0.001 min
 Response: 13874478722
 Conc: 360.05 ng/ml



#11 2,4,5-TP (SILVEX)

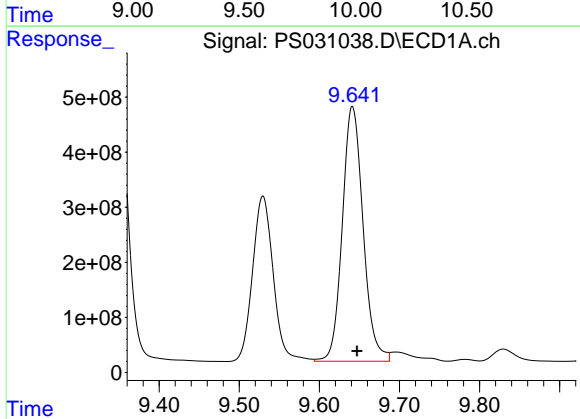
R.T.: 9.347 min
 Delta R.T.: -0.006 min
 Response: 10333096471
 Conc: 555.22 ng/ml

Instrument :
 ECD_S
 ClientSampleId :
 G4(0-6)MSD



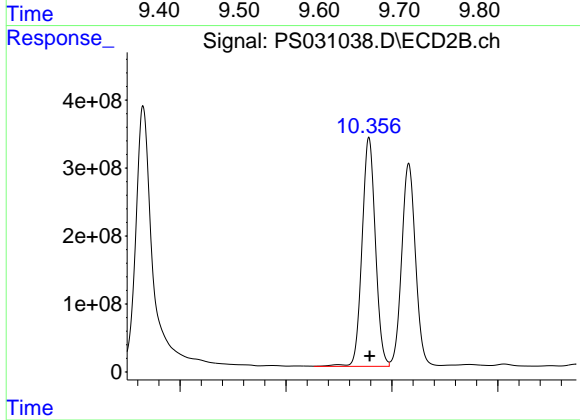
#11 2,4,5-TP (SILVEX)

R.T.: 9.930 min
 Delta R.T.: -0.001 min
 Response: 8756792593
 Conc: 596.68 ng/ml



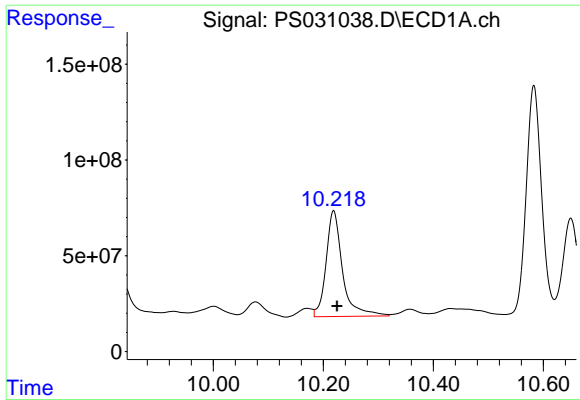
#12 2,4,5-T

R.T.: 9.641 min
 Delta R.T.: -0.006 min
 Response: 8350252141
 Conc: 548.88 ng/ml



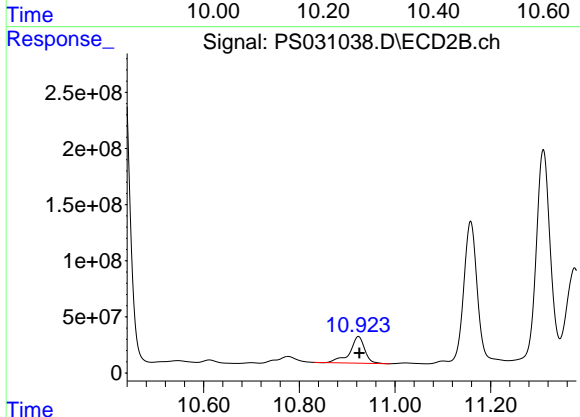
#12 2,4,5-T

R.T.: 10.357 min
 Delta R.T.: -0.002 min
 Response: 5900377732
 Conc: 421.70 ng/ml

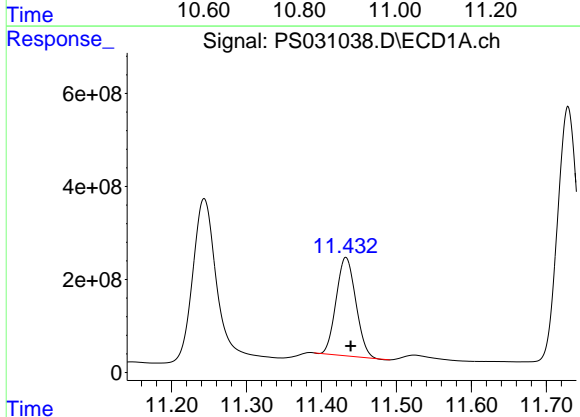


#13 2,4-DB
 R.T.: 10.219 min
 Delta R.T.: -0.006 min
 Response: 1148915451
 Conc: 529.26 ng/ml

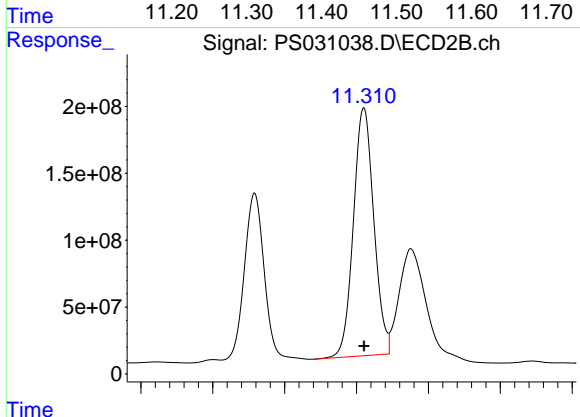
Instrument :
 ECD_S
 ClientSampleId :
 G4(0-6)MSD



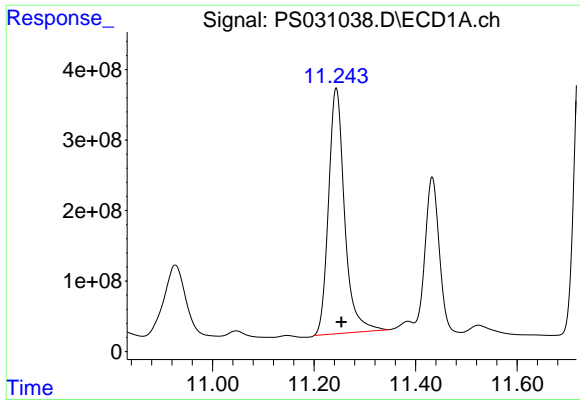
#13 2,4-DB
 R.T.: 10.923 min
 Delta R.T.: -0.002 min
 Response: 514144537
 Conc: 434.54 ng/ml



#14 DINOSEB
 R.T.: 11.433 min
 Delta R.T.: -0.007 min
 Response: 3853151036
 Conc: 292.26 ng/ml

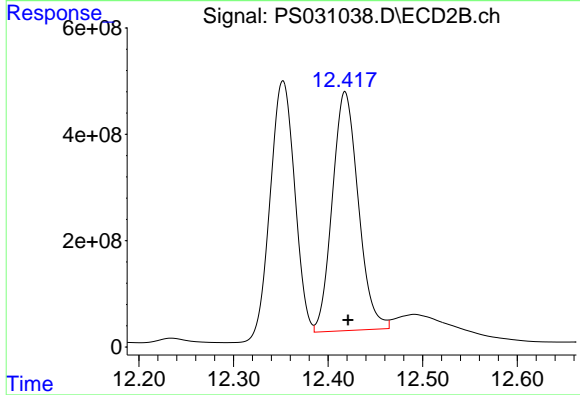


#14 DINOSEB
 R.T.: 11.310 min
 Delta R.T.: 0.000 min
 Response: 3661829951
 Conc: 322.59 ng/ml

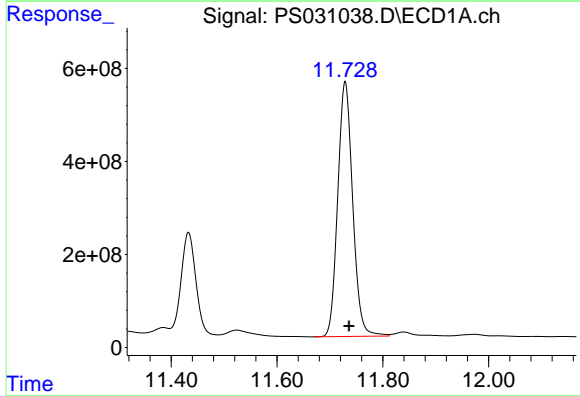


#15 Picloram
 R.T.: 11.244 min
 Delta R.T.: -0.010 min
 Response: 7650060639
 Conc: 524.99 ng/ml

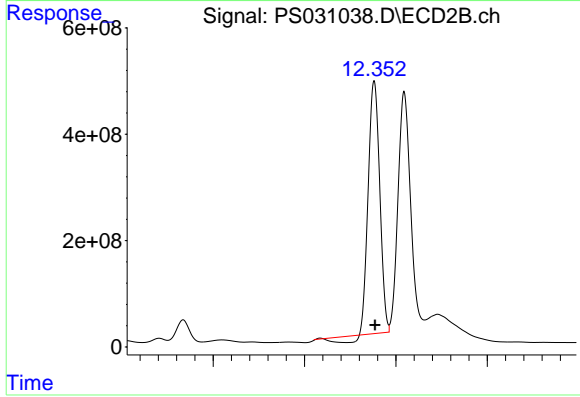
Instrument :
 ECD_S
 ClientSampleId :
 G4(0-6)MSD



#15 Picloram
 R.T.: 12.418 min
 Delta R.T.: -0.003 min
 Response: 8567804953
 Conc: 364.89 ng/ml



#16 DCPA
 R.T.: 11.729 min
 Delta R.T.: -0.007 min
 Response: 10746904726
 Conc: 448.96 ng/ml



#16 DCPA
 R.T.: 12.352 min
 Delta R.T.: -0.002 min
 Response: 7993363912
 Conc: 354.44 ng/ml