

Data Path : Z:\pestpcbsrv\HPCHEM1\ECD_S\Data\PS071525\
 Data File : PS031039.D
 Signal(s) : Signal #1: ECD1A.ch Signal #2: ECD2B.ch
 Acq On : 15 Jul 2025 21:10
 Operator : AR\AJ
 Sample : Q2489-02
 Misc :
 ALS Vial : 18 Sample Multiplier: 1

Instrument :
 ECD_S
 ClientSampleId :
 G4(6-12)

Integration File signal 1: autoint1.e
 Integration File signal 2: autoint2.e
 Quant Time: Jul 16 02:50:44 2025
 Quant Method : Z:\pestpcbsrv\HPCHEM1\ECD_S\Method\PS071125.M
 Quant Title : 8080.M
 QLast Update : Mon Jul 14 05:51:06 2025
 Response via : Initial Calibration
 Integrator: ChemStation

Volume Inj. : 1 µl
 Signal #1 Phase : ZB-MR1 Signal #2 Phase: ZB-MR2
 Signal #1 Info : 30M x 0.32mm x0.5 Signal #2 Info : 30M x 0.32mm x 0.25µm

Compound	RT#1	RT#2	Resp#1	Resp#2	ng/ml	ng/ml

System Monitoring Compounds						
4) S 2,4-DCAA	7.328	7.767	2278.9E6	526.3E6	576.185	508.036
Target Compounds						
1) T Dalapon	2.664f	2.693	1583.7E6	2320.4E6	259.977	816.233 #
2) T 3,5-DICHL...	6.506	6.687f	39812570	36890749	7.600	23.795 #
3) T 4-Nitroph...	7.112	7.316	6149781	1995067	4.555	1.144 #
5) T DICAMBA	7.482f	0.000	8060707	0	<MDL	N.D. #
6) T MCPP	0.000	8.079	0	3937360	N.D.	1.842
7) T MCPA	7.848	8.307	17493652	87802045	1.604	27.390 #
8) T DICHLORPROP	8.268f	8.668	95004469	8111762	27.900	5.339 #
10) T Pentachlo...	8.770	9.549	102.7E6	84816795	2.044	2.201
11) T 2,4,5-TP ...	9.354	9.911	410.0E6	469.6E6	22.029	31.996 #
12) T 2,4,5-T	9.616f	10.357	10257632	69100366	<MDL	4.939 #
13) T 2,4-DB	10.254f	10.960f	122.9E6	15784651	56.624	13.341 #
14) T DINOSEB	11.446	11.320	-157222804	979.6E6	N.D.	86.295
15) T Picloram	11.224f	0.000	104.7E6	0	7.188	N.D. #
16) T DCPA	11.696f	0.000	20288654	0	<MDL	N.D. #

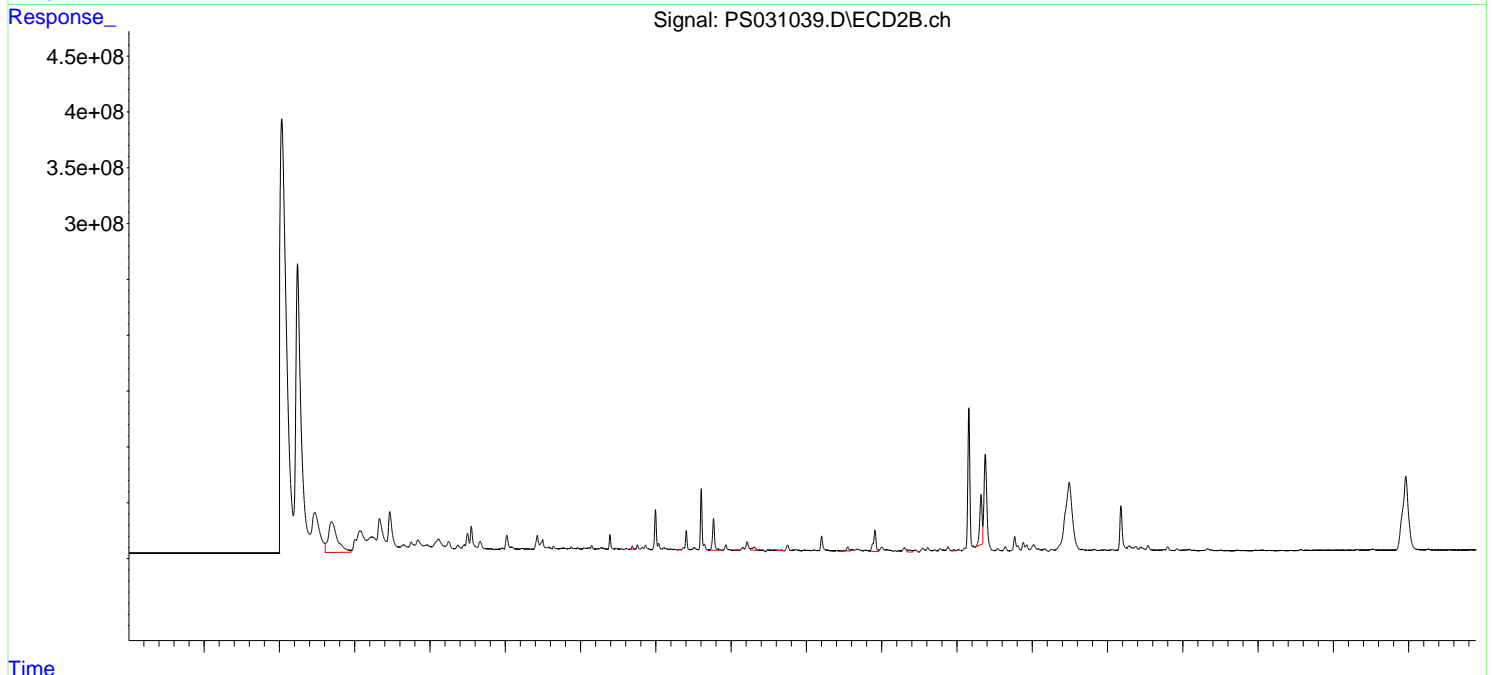
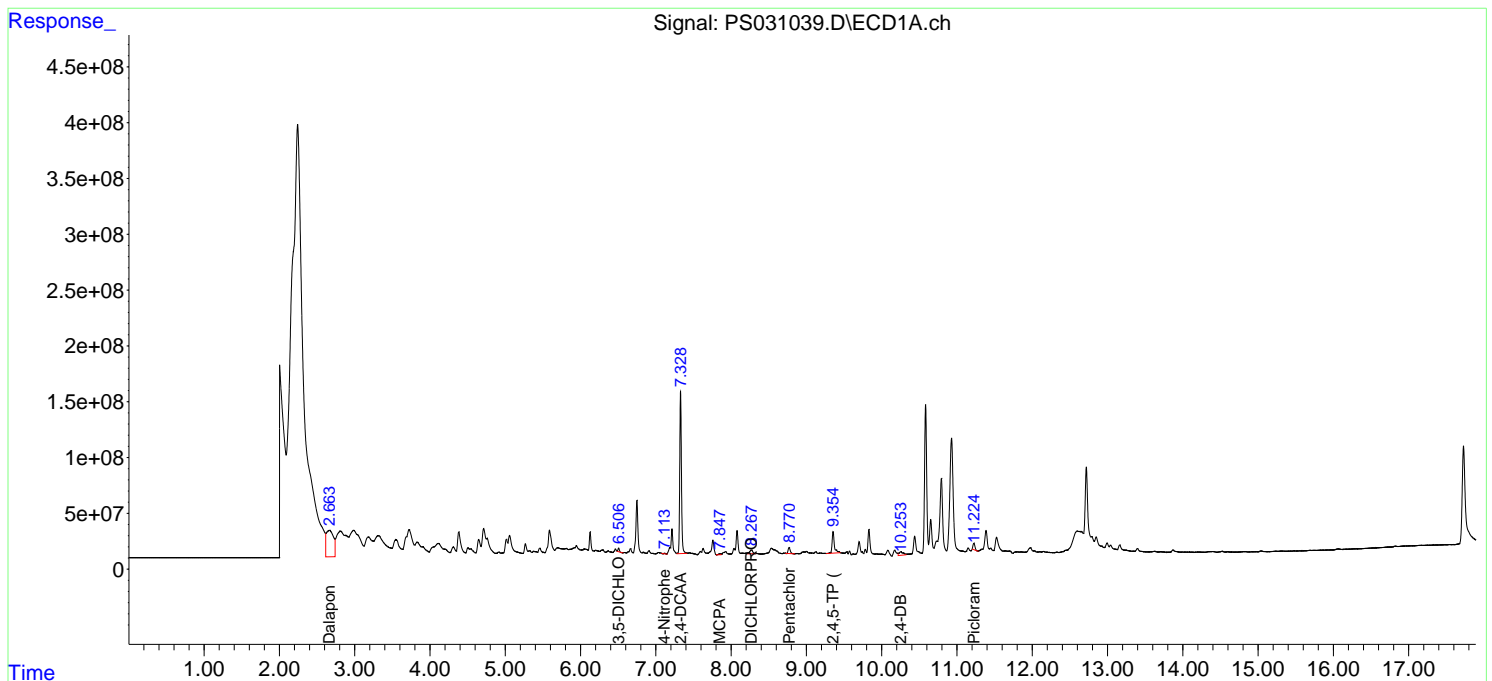
(f)=RT Delta > 1/2 Window (#)=Amounts differ by > 25% (m)=manual int.

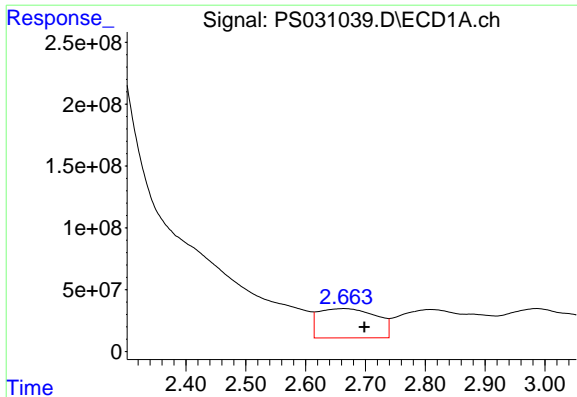
Data Path : Z:\pestpcbsrv\HPCHEM1\ECD_S\Data\PS071525\
 Data File : PS031039.D
 Signal(s) : Signal #1: ECD1A.ch Signal #2: ECD2B.ch
 Acq On : 15 Jul 2025 21:10
 Operator : AR\AJ
 Sample : Q2489-02
 Misc :
 ALS Vial : 18 Sample Multiplier: 1

Instrument :
 ECD_S
 ClientSampleId :
 G4(6-12)

Integration File signal 1: autoint1.e
 Integration File signal 2: autoint2.e
 Quant Time: Jul 16 02:50:44 2025
 Quant Method : Z:\pestpcbsrv\HPCHEM1\ECD_S\Method\PS071125.M
 Quant Title : 8080.M
 QLast Update : Mon Jul 14 05:51:06 2025
 Response via : Initial Calibration
 Integrator: ChemStation

Volume Inj. : 1 µl
 Signal #1 Phase : ZB-MR1 Signal #2 Phase: ZB-MR2
 Signal #1 Info : 30M x 0.32mm x0.5 Signal #2 Info : 30M x 0.32mm x 0.25µm

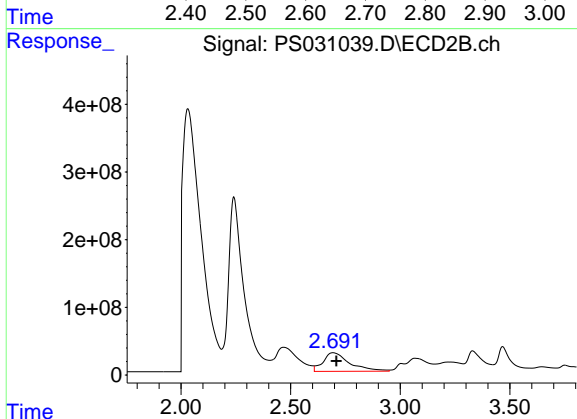




#1 Dalapon

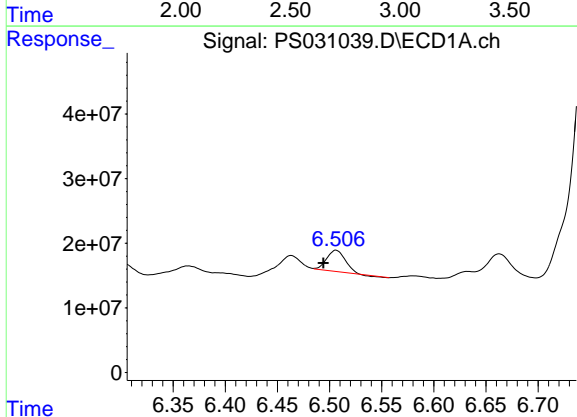
R.T.: 2.664 min
 Delta R.T.: -0.034 min
 Response: 1583709937
 Conc: 259.98 ng/ml

Instrument :
 ECD_S
 ClientSampleId :
 G4(6-12)



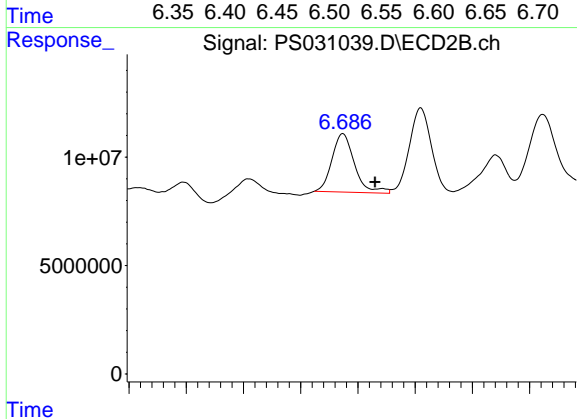
#1 Dalapon

R.T.: 2.693 min
 Delta R.T.: -0.015 min
 Response: 2320434099
 Conc: 816.23 ng/ml



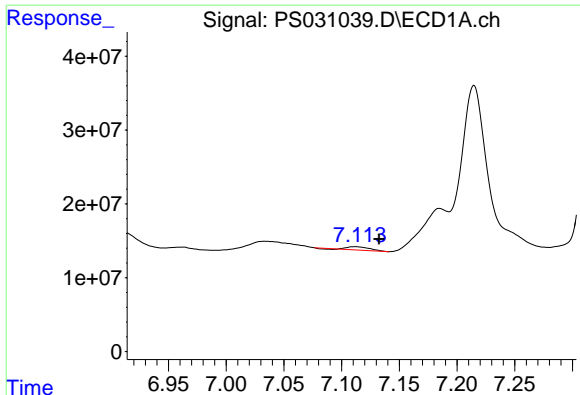
#2 3,5-DICHLOROBENZOIC ACID

R.T.: 6.506 min
 Delta R.T.: 0.012 min
 Response: 39812570
 Conc: 7.60 ng/ml



#2 3,5-DICHLOROBENZOIC ACID

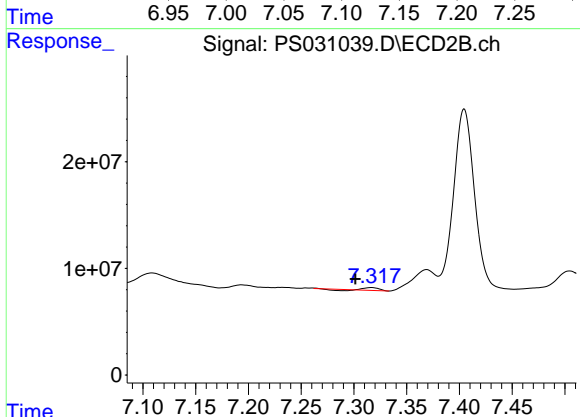
R.T.: 6.687 min
 Delta R.T.: -0.028 min
 Response: 36890749
 Conc: 23.80 ng/ml



#3 4-Nitrophenol

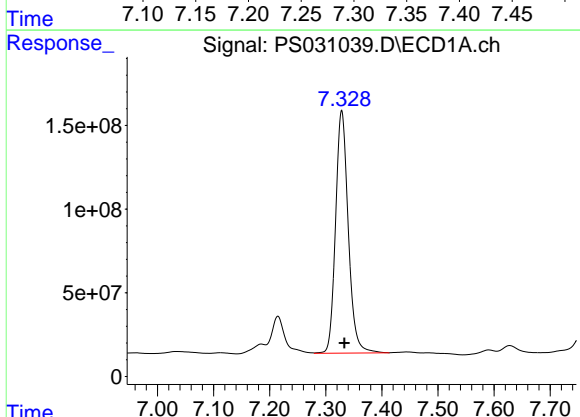
R.T.: 7.112 min
 Delta R.T.: -0.020 min
 Response: 6149781
 Conc: 4.56 ng/ml

Instrument :
 ECD_S
 ClientSampleId :
 G4(6-12)



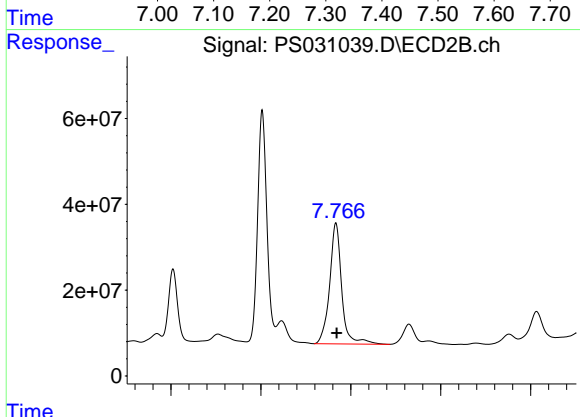
#3 4-Nitrophenol

R.T.: 7.316 min
 Delta R.T.: 0.015 min
 Response: 1995067
 Conc: 1.14 ng/ml



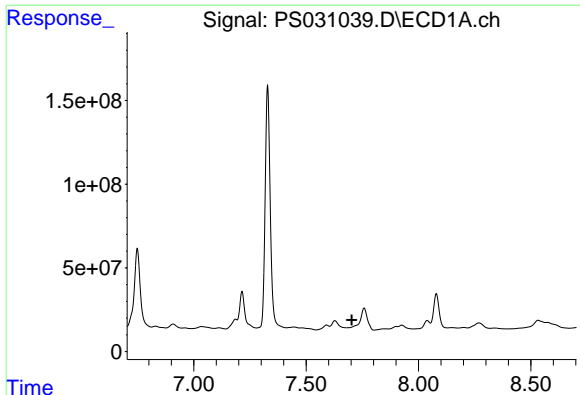
#4 2,4-DCAA

R.T.: 7.328 min
 Delta R.T.: -0.005 min
 Response: 2278853724
 Conc: 576.18 ng/ml



#4 2,4-DCAA

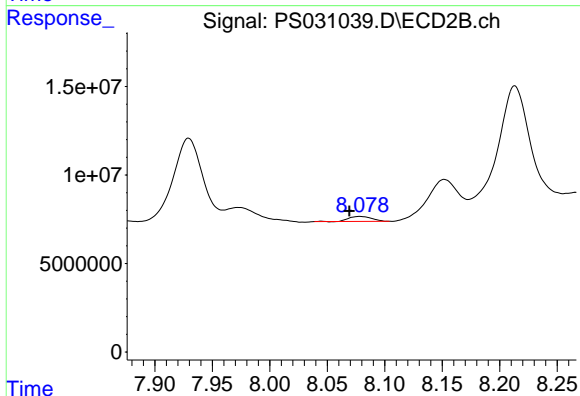
R.T.: 7.767 min
 Delta R.T.: -0.002 min
 Response: 526341743
 Conc: 508.04 ng/ml



#6 MCPP

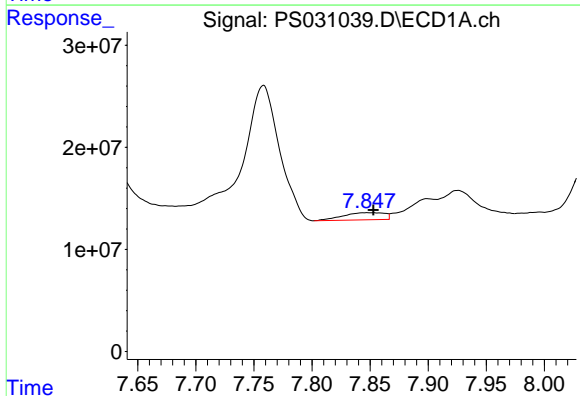
R.T.: 0.000 min
 Exp R.T.: 7.703 min
 Response: 0
 Conc: N.D.

Instrument :
 ECD_S
 ClientSampleId :
 G4(6-12)



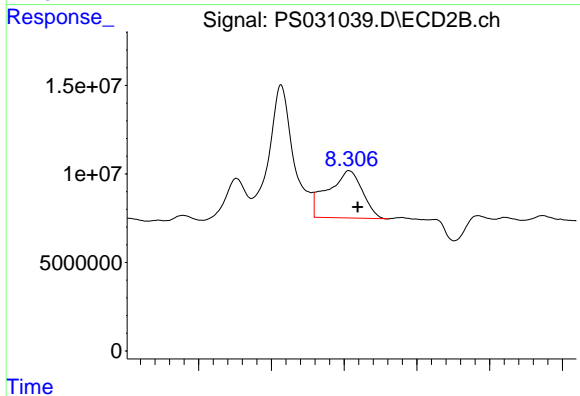
#6 MCPP

R.T.: 8.079 min
 Delta R.T.: 0.010 min
 Response: 3937360
 Conc: 1.84 ug/ml



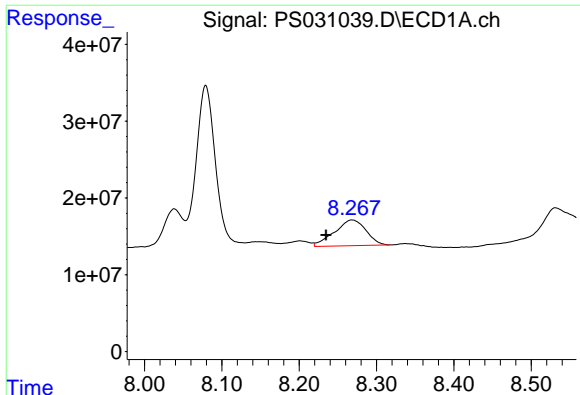
#7 MCPA

R.T.: 7.848 min
 Delta R.T.: -0.005 min
 Response: 17493652
 Conc: 1.60 ug/ml



#7 MCPA

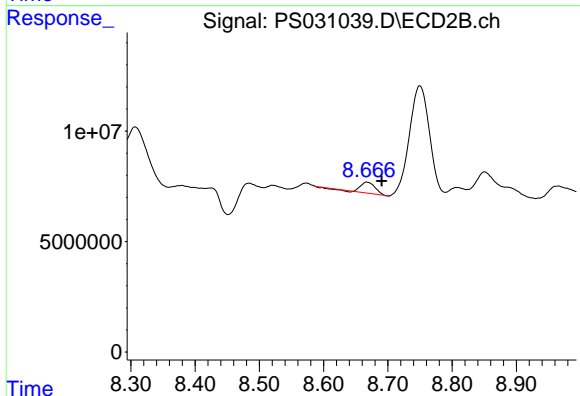
R.T.: 8.307 min
 Delta R.T.: -0.012 min
 Response: 87802045
 Conc: 27.39 ug/ml



#8 DICHLORPROP

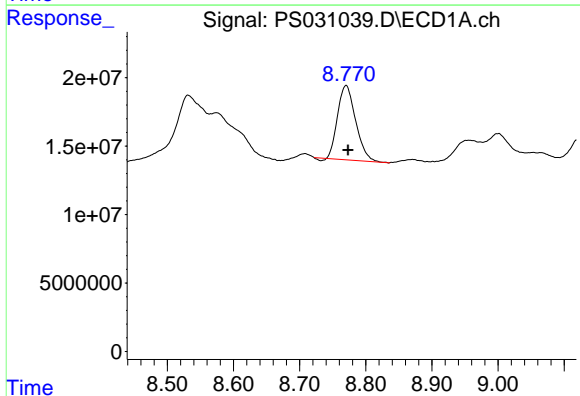
R.T.: 8.268 min
 Delta R.T.: 0.034 min
 Response: 95004469
 Conc: 27.90 ng/ml

Instrument :
 ECD_S
 ClientSampleId :
 G4(6-12)



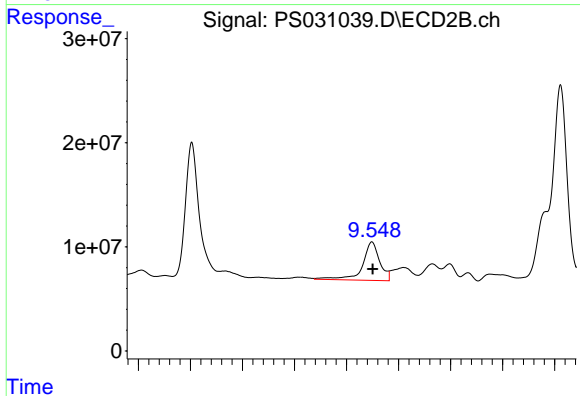
#8 DICHLORPROP

R.T.: 8.668 min
 Delta R.T.: -0.023 min
 Response: 8111762
 Conc: 5.34 ng/ml



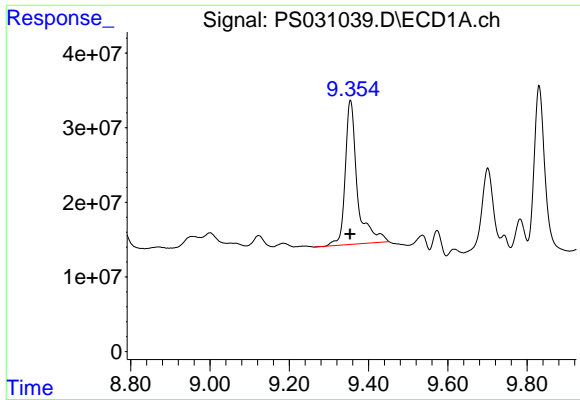
#10 Pentachlorophenol

R.T.: 8.770 min
 Delta R.T.: -0.003 min
 Response: 102715480
 Conc: 2.04 ng/ml



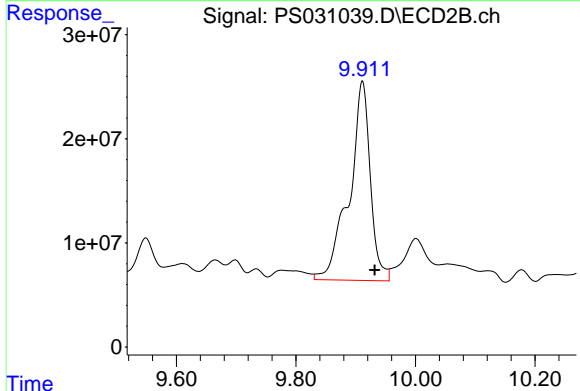
#10 Pentachlorophenol

R.T.: 9.549 min
 Delta R.T.: -0.002 min
 Response: 84816795
 Conc: 2.20 ng/ml

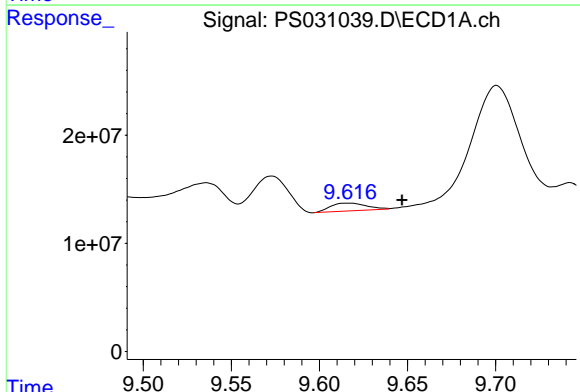


#11 2,4,5-TP (SILVEX)
 R.T.: 9.354 min
 Delta R.T.: 0.001 min
 Response: 409984087
 Conc: 22.03 ng/ml

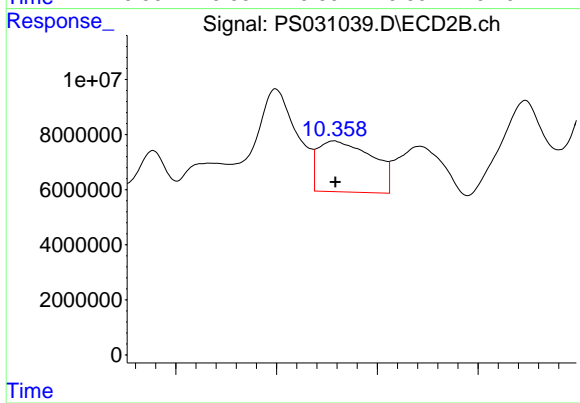
Instrument :
 ECD_S
 ClientSampleId :
 G4(6-12)



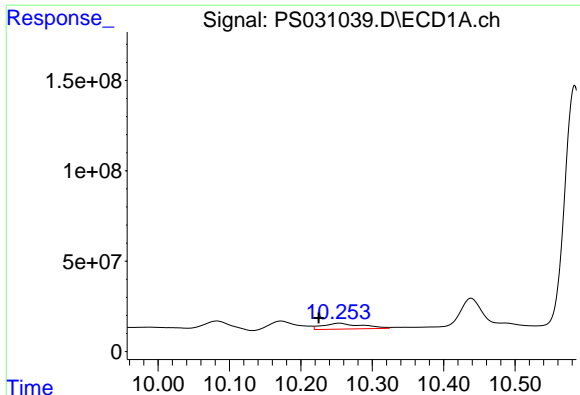
#11 2,4,5-TP (SILVEX)
 R.T.: 9.911 min
 Delta R.T.: -0.021 min
 Response: 469566970
 Conc: 32.00 ng/ml



#12 2,4,5-T
 R.T.: 9.616 min
 Delta R.T.: -0.030 min
 Response: 10257632
 Conc: N.D.



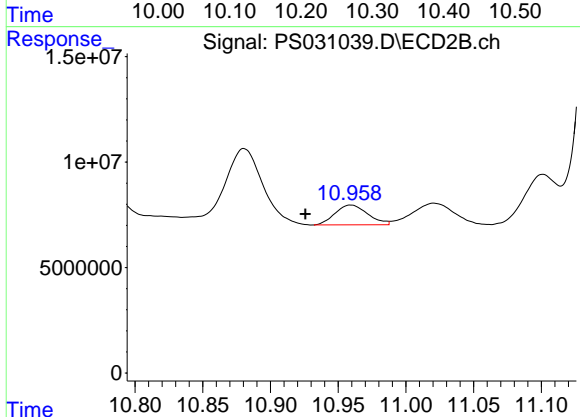
#12 2,4,5-T
 R.T.: 10.357 min
 Delta R.T.: -0.001 min
 Response: 69100366
 Conc: 4.94 ng/ml



#13 2,4-DB

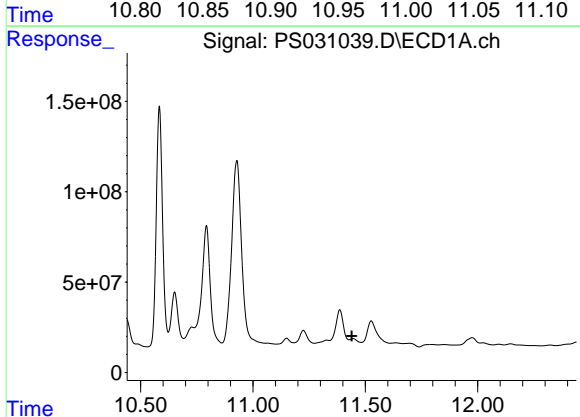
R.T.: 10.254 min
 Delta R.T.: 0.029 min
 Response: 122919357
 Conc: 56.62 ng/ml

Instrument :
 ECD_S
 ClientSampleId :
 G4(6-12)



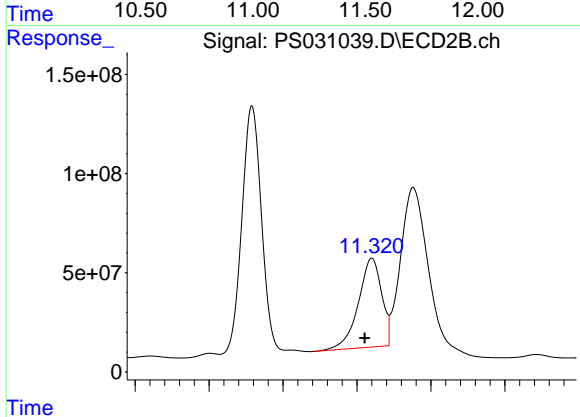
#13 2,4-DB

R.T.: 10.960 min
 Delta R.T.: 0.034 min
 Response: 15784651
 Conc: 13.34 ng/ml



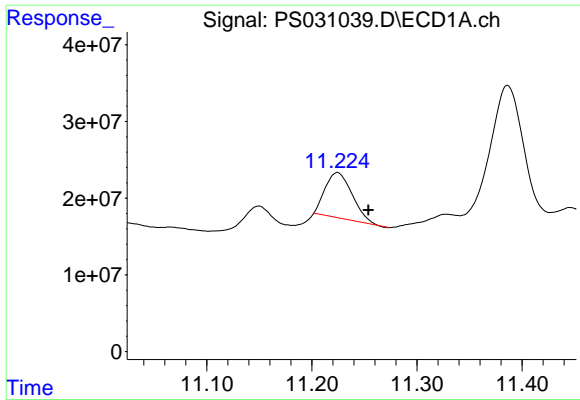
#14 DINOSEB

R.T.: 11.446 min
 Delta R.T.: 0.007 min
 Response: -157222804
 Conc: N.D.



#14 DINOSEB

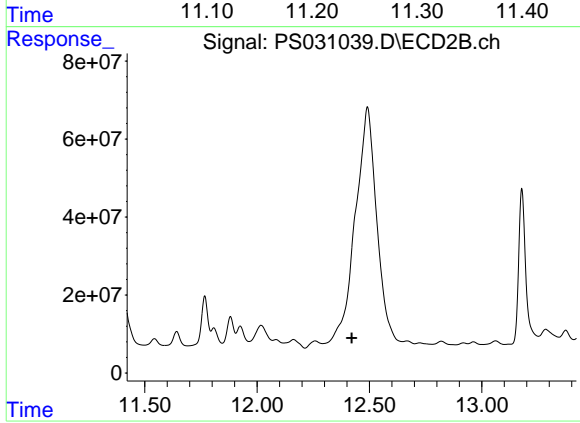
R.T.: 11.320 min
 Delta R.T.: 0.009 min
 Response: 979582932
 Conc: 86.30 ng/ml



#15 Picloram

R.T.: 11.224 min
Delta R.T.: -0.029 min
Response: 104745629
Conc: 7.19 ng/ml

Instrument :
ECD_S
ClientSampleId :
G4(6-12)



#15 Picloram

R.T.: 0.000 min
Exp R.T. : 12.421 min
Response: 0
Conc: N.D.