

Data Path : Z:\pestpcbsrv\HPCHEM1\ECD_S\Data\PS071525\
 Data File : PS031041.D
 Signal(s) : Signal #1: ECD1A.ch Signal #2: ECD2B.ch
 Acq On : 15 Jul 2025 21:58
 Operator : AR\AJ
 Sample : Q2489-04
 Misc :
 ALS Vial : 20 Sample Multiplier: 1

Instrument :
 ECD_S
 ClientSampleId :
 G3(6-12)

Integration File signal 1: autoint1.e
 Integration File signal 2: autoint2.e
 Quant Time: Jul 16 02:51:10 2025
 Quant Method : Z:\pestpcbsrv\HPCHEM1\ECD_S\Method\PS071125.M
 Quant Title : 8080.M
 QLast Update : Mon Jul 14 05:51:06 2025
 Response via : Initial Calibration
 Integrator: ChemStation

Volume Inj. : 1 µl
 Signal #1 Phase : ZB-MR1 Signal #2 Phase: ZB-MR2
 Signal #1 Info : 30M x 0.32mm x0.5 Signal #2 Info : 30M x 0.32mm x 0.25µm

Compound	RT#1	RT#2	Resp#1	Resp#2	ng/ml	ng/ml

System Monitoring Compounds						
4) S 2,4-DCAA	7.328	7.766	2443.5E6	533.2E6	617.819	514.619
Target Compounds						
1) T Dalapon	2.662f	2.692	1565.7E6	2242.0E6	257.013	788.634 #
2) T 3,5-DICHL...	6.506	6.687f	49583257	41009312	9.465	26.452 #
3) T 4-Nitroph...	7.116	7.314	3930876	551965	2.912	<MDL #
5) T DICAMBA	7.483f	0.000	7225728	0	<MDL	N.D. #
6) T MCPP	0.000	8.079	0	7537185	N.D.	3.525
7) T MCPA	7.851	8.307	9718165	70290793	<MDL	21.927 #
8) T DICHLORPROP	8.269f	8.667	94186421	7973218	27.660	5.248 #
10) T Pentachlo...	8.778	0.000	24507171	0	<MDL	N.D. #
11) T 2,4,5-TP ...	9.355	9.911	317.8E6	426.8E6	17.078	29.083 #
12) T 2,4,5-T	9.616f	0.000	10903412	0	<MDL	N.D. #
13) T 2,4-DB	10.254f	10.959f	81581858	14703877	37.582	12.427 #
14) T DINOSEB	11.446	11.319	-106015129	912.2E6	N.D.	80.363
15) T Picloram	11.224f	0.000	104.5E6	0	7.170	N.D. #
16) T DCPA	11.692f	0.000	18867174	0	<MDL	N.D. #

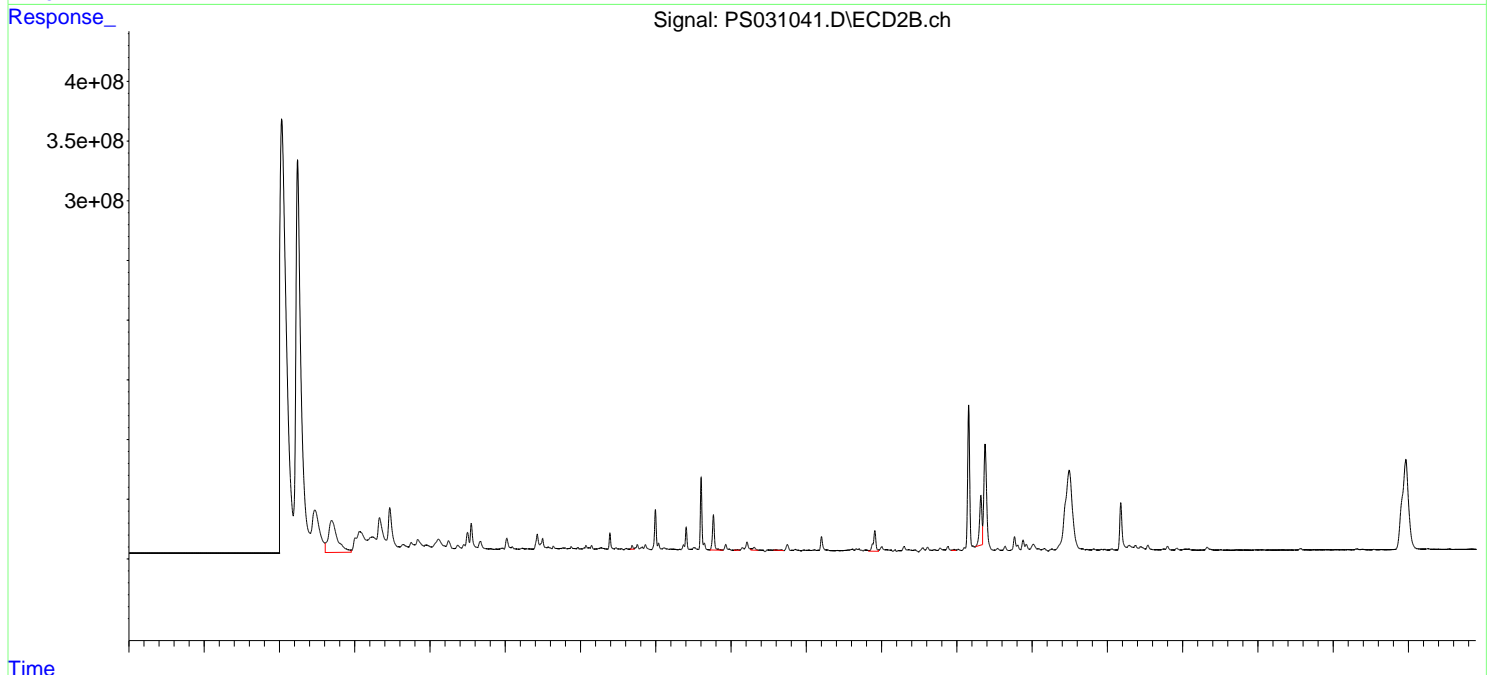
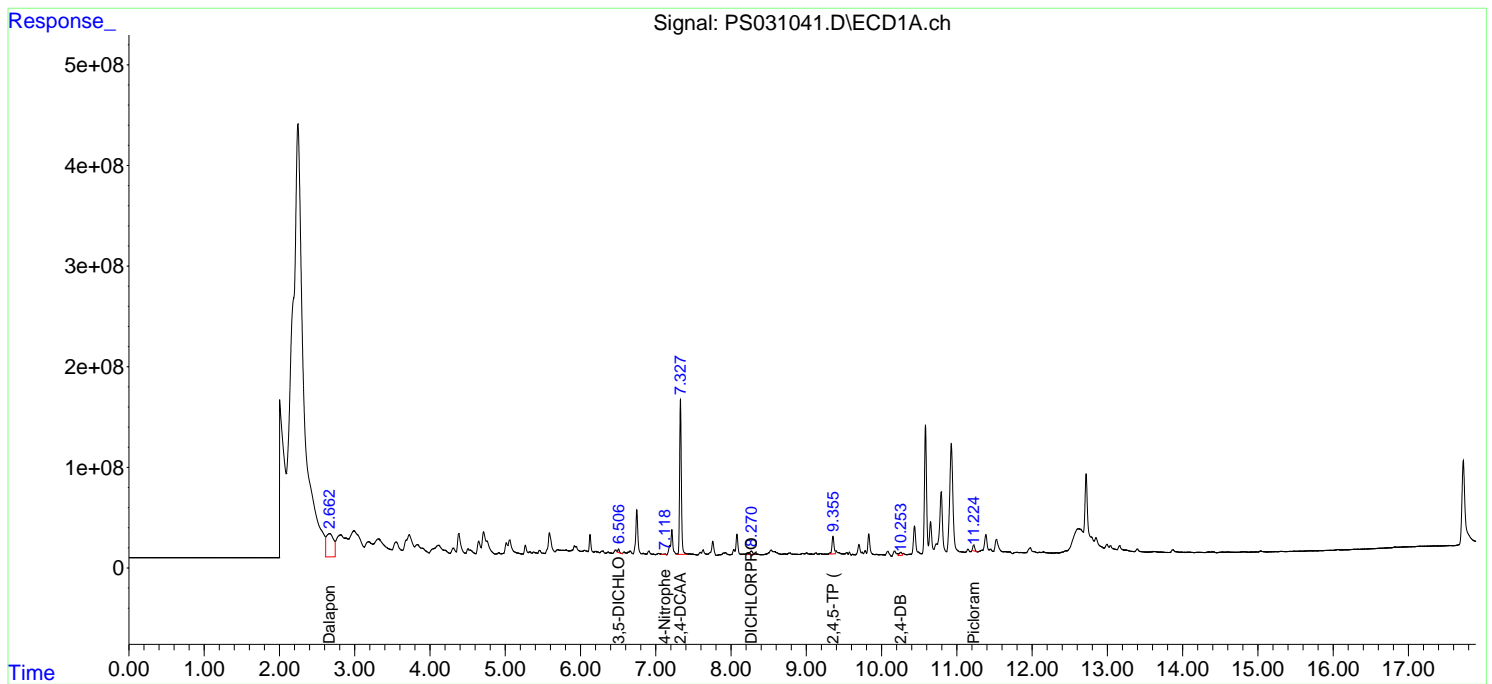
(f)=RT Delta > 1/2 Window (#)=Amounts differ by > 25% (m)=manual int.

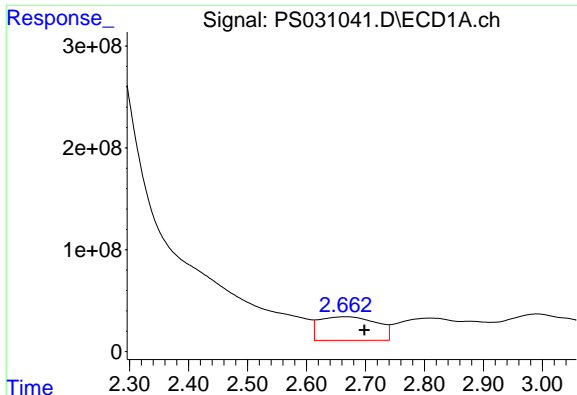
Data Path : Z:\pestpcbsrv\HPCHEM1\ECD_S\Data\PS071525\
 Data File : PS031041.D
 Signal(s) : Signal #1: ECD1A.ch Signal #2: ECD2B.ch
 Acq On : 15 Jul 2025 21:58
 Operator : AR\AJ
 Sample : Q2489-04
 Misc :
 ALS Vial : 20 Sample Multiplier: 1

Instrument :
 ECD_S
 ClientSampleId :
 G3(6-12)

Integration File signal 1: autoint1.e
 Integration File signal 2: autoint2.e
 Quant Time: Jul 16 02:51:10 2025
 Quant Method : Z:\pestpcbsrv\HPCHEM1\ECD_S\Method\PS071125.M
 Quant Title : 8080.M
 QLast Update : Mon Jul 14 05:51:06 2025
 Response via : Initial Calibration
 Integrator: ChemStation

Volume Inj. : 1 µl
 Signal #1 Phase : ZB-MR1 Signal #2 Phase: ZB-MR2
 Signal #1 Info : 30M x 0.32mm x0.5 Signal #2 Info : 30M x 0.32mm x 0.25µm

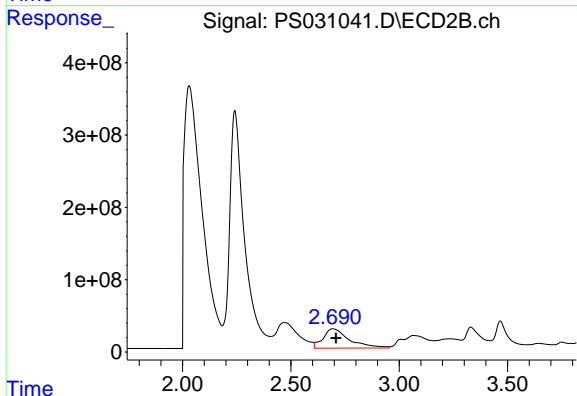




#1 Dalapon

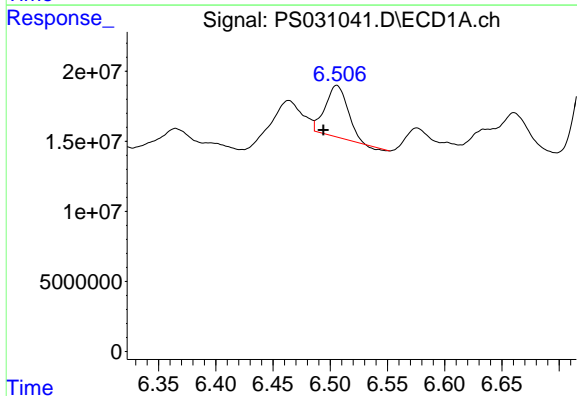
R.T.: 2.662 min
 Delta R.T.: -0.036 min
 Response: 1565650905
 Conc: 257.01 ng/ml

Instrument :
 ECD_S
 ClientSampleId :
 G3(6-12)



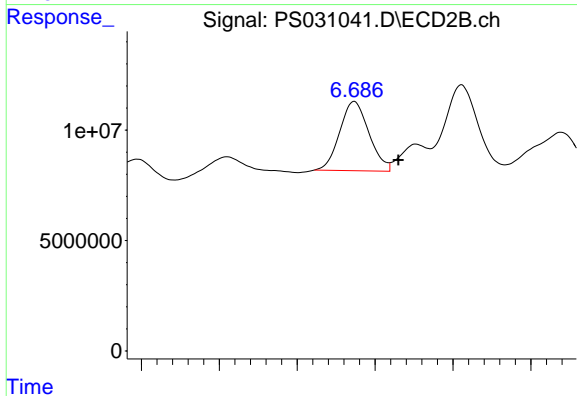
#1 Dalapon

R.T.: 2.692 min
 Delta R.T.: -0.016 min
 Response: 2241974275
 Conc: 788.63 ng/ml



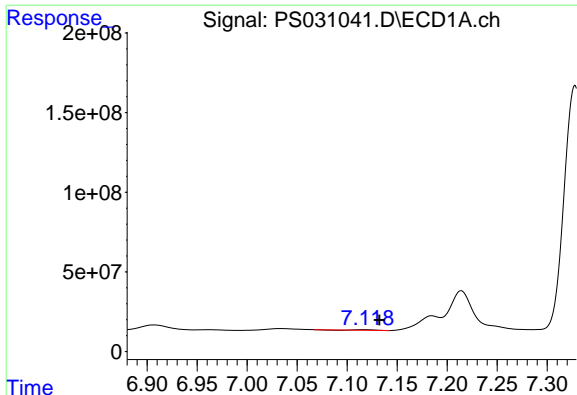
#2 3,5-DICHLOROBENZOIC ACID

R.T.: 6.506 min
 Delta R.T.: 0.012 min
 Response: 49583257
 Conc: 9.46 ng/ml



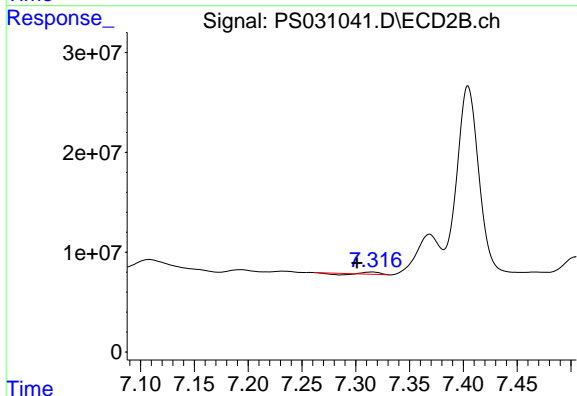
#2 3,5-DICHLOROBENZOIC ACID

R.T.: 6.687 min
 Delta R.T.: -0.028 min
 Response: 41009312
 Conc: 26.45 ng/ml

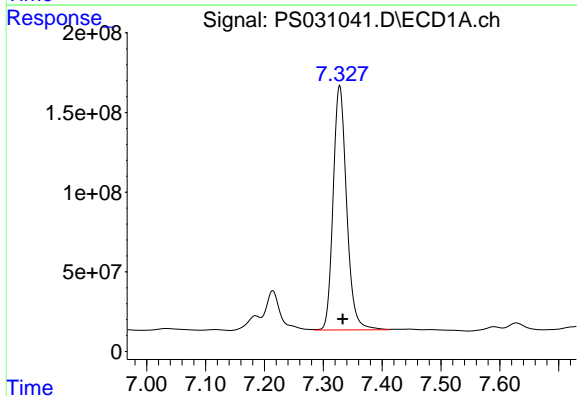


#3 4-Nitrophenol
 R.T.: 7.116 min
 Delta R.T.: -0.016 min
 Response: 3930876
 Conc: 2.91 ng/ml

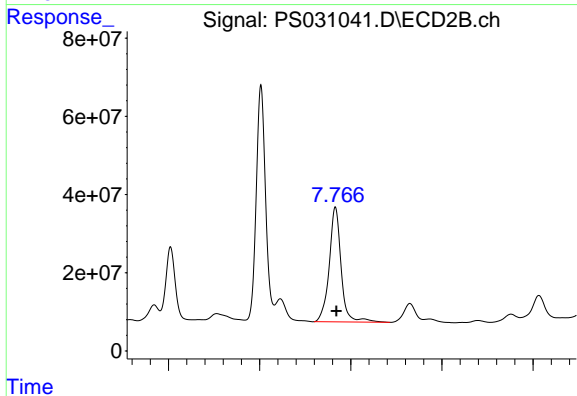
Instrument :
 ECD_S
 ClientSampleId :
 G3(6-12)



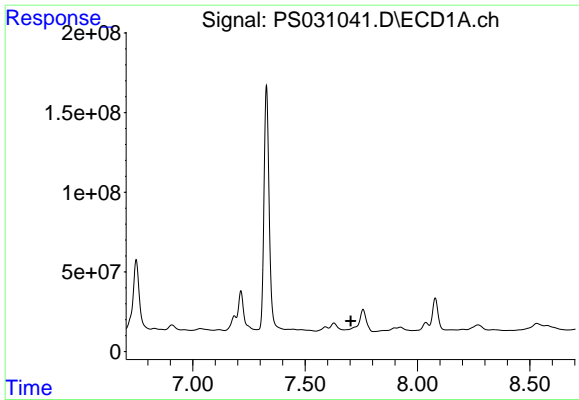
#3 4-Nitrophenol
 R.T.: 7.314 min
 Delta R.T.: 0.013 min
 Response: 551965
 Conc: N.D.



#4 2,4-DCAA
 R.T.: 7.328 min
 Delta R.T.: -0.005 min
 Response: 2443519715
 Conc: 617.82 ng/ml

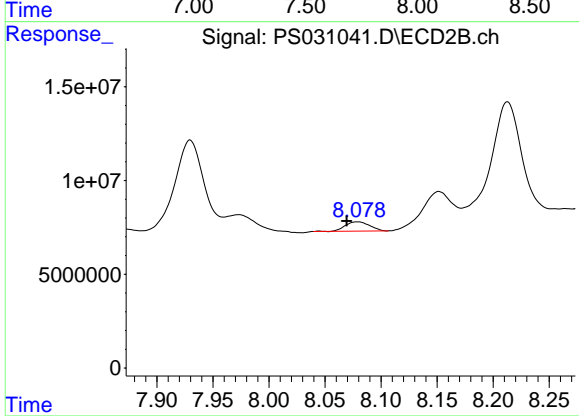


#4 2,4-DCAA
 R.T.: 7.766 min
 Delta R.T.: -0.003 min
 Response: 533162083
 Conc: 514.62 ng/ml

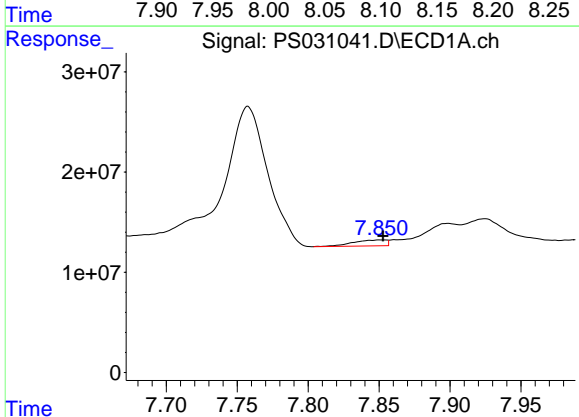


#6 MCP
 R.T.: 0.000 min
 Exp R.T.: 7.703 min
 Response: 0
 Conc: N.D.

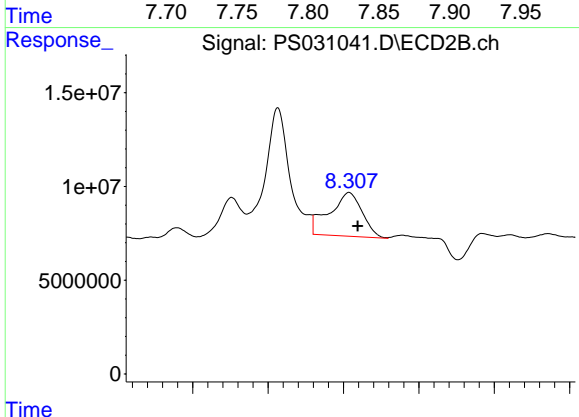
Instrument :
 ECD_S
 ClientSampleId :
 G3(6-12)



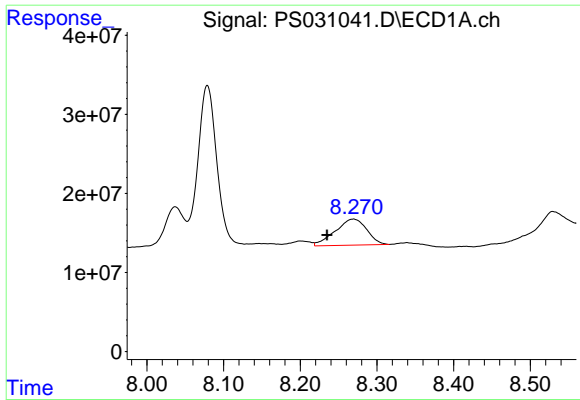
#6 MCP
 R.T.: 8.079 min
 Delta R.T.: 0.010 min
 Response: 7537185
 Conc: 3.53 ug/ml



#7 MCP
 R.T.: 7.851 min
 Delta R.T.: -0.002 min
 Response: 9718165
 Conc: N.D.



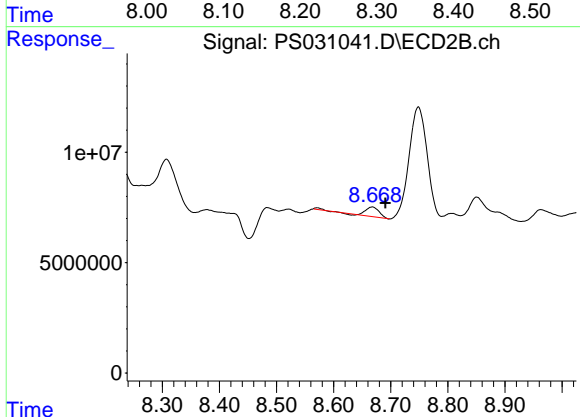
#7 MCP
 R.T.: 8.307 min
 Delta R.T.: -0.012 min
 Response: 70290793
 Conc: 21.93 ug/ml



#8 DICHLORPROP

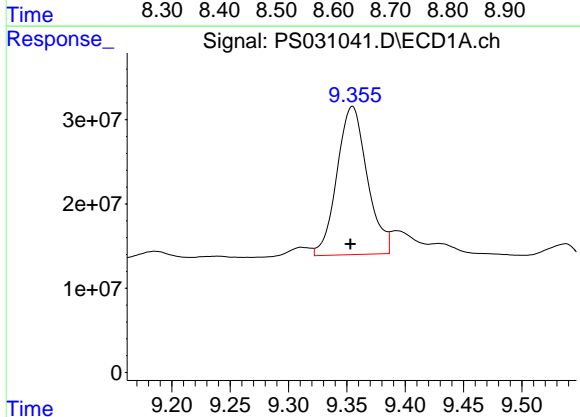
R.T.: 8.269 min
 Delta R.T.: 0.035 min
 Response: 94186421
 Conc: 27.66 ng/ml

Instrument :
 ECD_S
 ClientSampleId :
 G3(6-12)



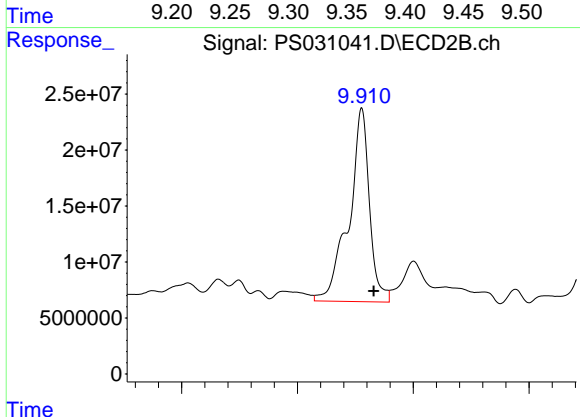
#8 DICHLORPROP

R.T.: 8.667 min
 Delta R.T.: -0.024 min
 Response: 7973218
 Conc: 5.25 ng/ml



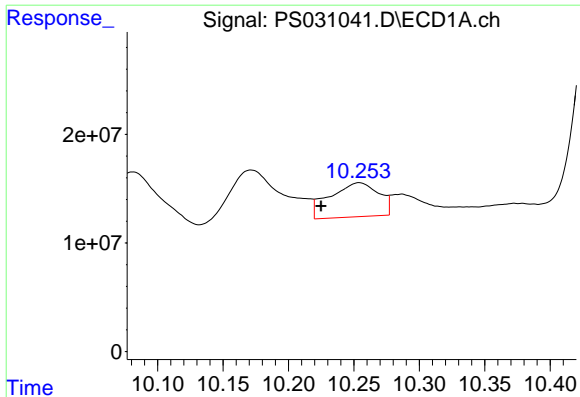
#11 2,4,5-TP (SILVEX)

R.T.: 9.355 min
 Delta R.T.: 0.002 min
 Response: 317825264
 Conc: 17.08 ng/ml



#11 2,4,5-TP (SILVEX)

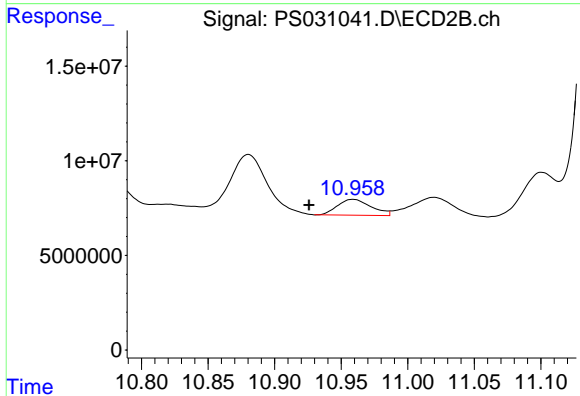
R.T.: 9.911 min
 Delta R.T.: -0.021 min
 Response: 426808356
 Conc: 29.08 ng/ml



#13 2,4-DB

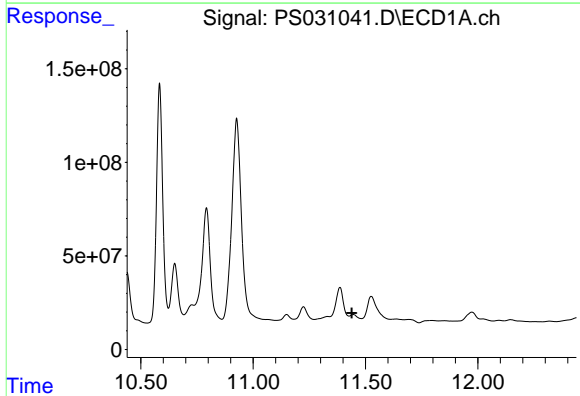
R.T.: 10.254 min
 Delta R.T.: 0.029 min
 Response: 81581858
 Conc: 37.58 ng/ml

Instrument :
 ECD_S
 ClientSampleId :
 G3(6-12)



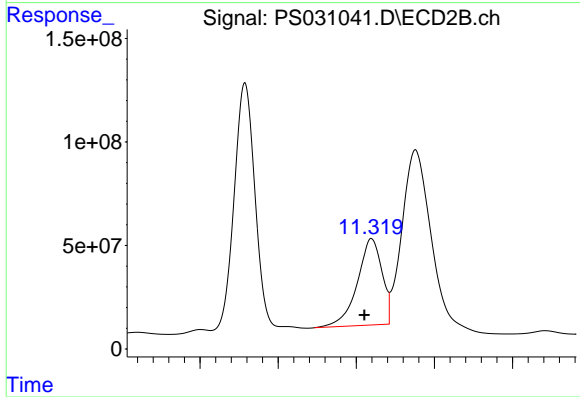
#13 2,4-DB

R.T.: 10.959 min
 Delta R.T.: 0.033 min
 Response: 14703877
 Conc: 12.43 ng/ml



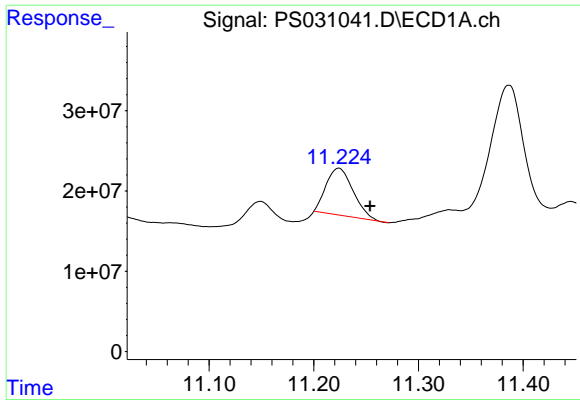
#14 DINOSEB

R.T.: 11.446 min
 Delta R.T.: 0.006 min
 Response: -106015129
 Conc: N.D.



#14 DINOSEB

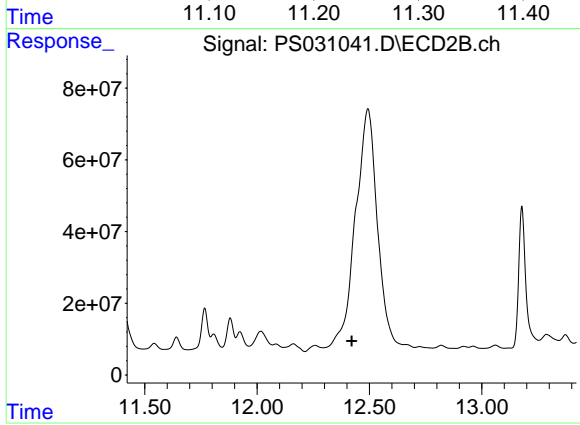
R.T.: 11.319 min
 Delta R.T.: 0.009 min
 Response: 912237352
 Conc: 80.36 ng/ml



#15 Picloram

R.T.: 11.224 min
Delta R.T.: -0.030 min
Response: 104475626
Conc: 7.17 ng/ml

Instrument :
ECD_S
ClientSampleId :
G3(6-12)



#15 Picloram

R.T.: 0.000 min
Exp R.T. : 12.421 min
Response: 0
Conc: N.D.