

Data Path : Z:\pestpcbsrv\HPCHEM1\ECD_S\Data\PS071525\
 Data File : PS031042.D
 Signal(s) : Signal #1: ECD1A.ch Signal #2: ECD2B.ch
 Acq On : 15 Jul 2025 22:23
 Operator : AR\AJ
 Sample : Q2489-05
 Misc :
 ALS Vial : 21 Sample Multiplier: 1

Instrument :
 ECD_S
 ClientSampleId :
 G2(0-6)

Integration File signal 1: autoint1.e
 Integration File signal 2: autoint2.e
 Quant Time: Jul 16 02:51:22 2025
 Quant Method : Z:\pestpcbsrv\HPCHEM1\ECD_S\Method\PS071125.M
 Quant Title : 8080.M
 QLast Update : Mon Jul 14 05:51:06 2025
 Response via : Initial Calibration
 Integrator: ChemStation

Volume Inj. : 1 µl
 Signal #1 Phase : ZB-MR1 Signal #2 Phase: ZB-MR2
 Signal #1 Info : 30M x 0.32mm x0.5 Signal #2 Info : 30M x 0.32mm x 0.25µm

Compound	RT#1	RT#2	Resp#1	Resp#2	ng/ml	ng/ml

System Monitoring Compounds						
4) S 2,4-DCAA	7.329	7.767	2572.3E6	544.6E6	650.388	525.657
Target Compounds						
1) T Dalapon	2.664f	2.694	1807.9E6	2408.0E6	296.778	847.050 #
2) T 3,5-DICHL...	6.506	6.687f	20036978	16858475	3.825	10.874 #
3) T 4-Nitroph...	7.117	7.320	475269	4121114	<MDL	2.363 #
6) T MCPP	7.717	8.074	35440557	2276485	3.852	1.065 #
7) T MCPA	7.900f	8.304	42031473	87193053	3.854	27.200 #
8) T DICHLORPROP	8.202f	8.666	13085922	12848391	3.843	8.457 #
9) T 2,4-D	0.000	9.046	0	2018842	N.D.	1.188
10) T Pentachlo...	8.772	9.550	8973922	11040784	<MDL	<MDL #
11) T 2,4,5-TP ...	9.355	9.911	208.4E6	385.5E6	11.197	26.268 #
12) T 2,4,5-T	9.617f	10.358	16052522	50213134	1.055	3.589 #
13) T 2,4-DB	10.253f	10.960f	111.4E6	13176237	51.323	11.136 #
14) T DINOSEB	11.446	11.319	-87875524	1167.1E6	N.D.	102.811
15) T Picloram	11.225f	0.000	85673589	0	5.879	N.D. #
16) T DCPA	11.697f	0.000	18421414	0	<MDL	N.D. #

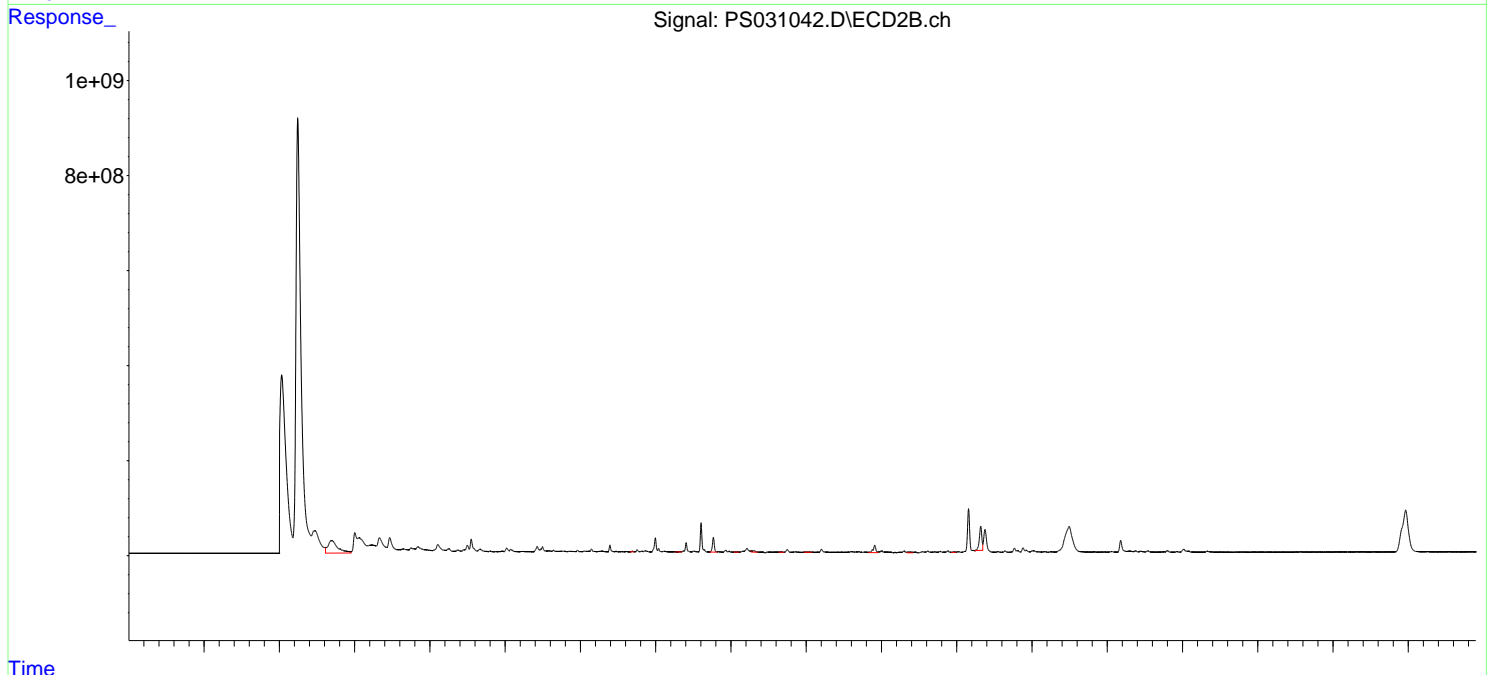
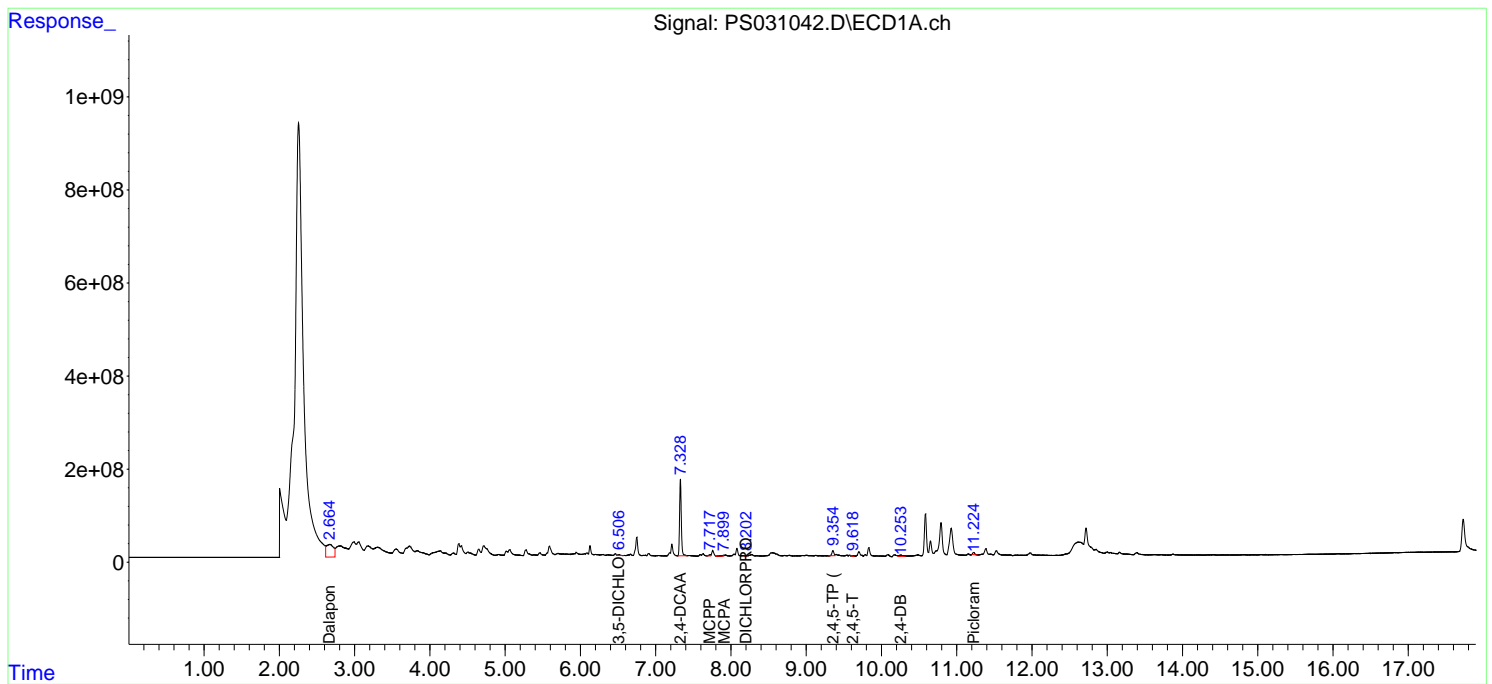
(f)=RT Delta > 1/2 Window (#)=Amounts differ by > 25% (m)=manual int.

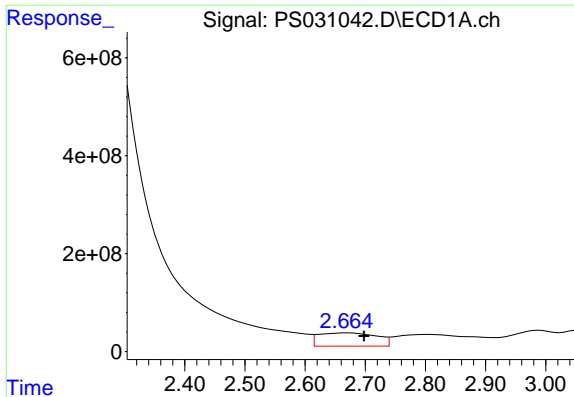
Data Path : Z:\pestpcbsrv\HPCHEM1\ECD_S\Data\PS071525\
 Data File : PS031042.D
 Signal(s) : Signal #1: ECD1A.ch Signal #2: ECD2B.ch
 Acq On : 15 Jul 2025 22:23
 Operator : AR\AJ
 Sample : Q2489-05
 Misc :
 ALS Vial : 21 Sample Multiplier: 1

Instrument :
 ECD_S
ClientSampleId :
 G2(0-6)

Integration File signal 1: autoint1.e
 Integration File signal 2: autoint2.e
 Quant Time: Jul 16 02:51:22 2025
 Quant Method : Z:\pestpcbsrv\HPCHEM1\ECD_S\Method\PS071125.M
 Quant Title : 8080.M
 QLast Update : Mon Jul 14 05:51:06 2025
 Response via : Initial Calibration
 Integrator: ChemStation

Volume Inj. : 1 µl
 Signal #1 Phase : ZB-MR1 Signal #2 Phase: ZB-MR2
 Signal #1 Info : 30M x 0.32mm x 0.5 Signal #2 Info : 30M x 0.32mm x 0.25µm

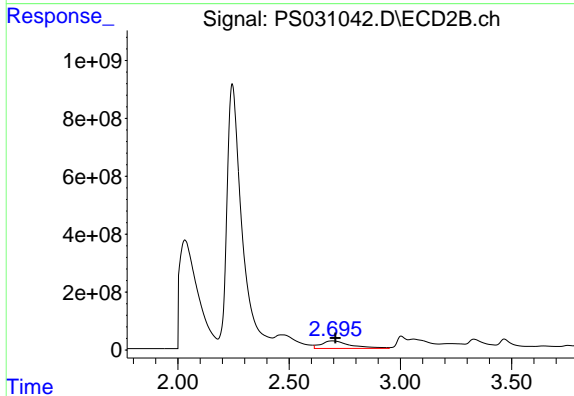




#1 Dalapon

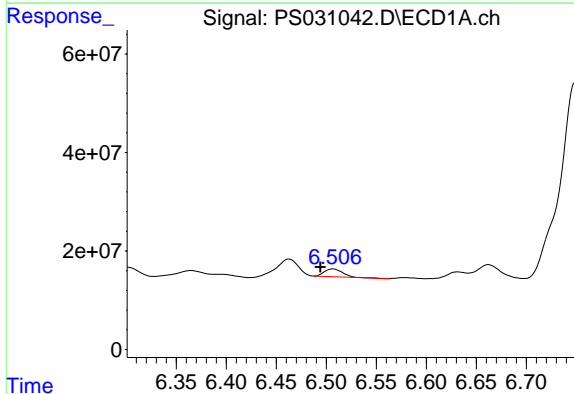
R.T.: 2.664 min
 Delta R.T.: -0.034 min
 Response: 1807889759
 Conc: 296.78 ng/ml

Instrument :
 ECD_S
 ClientSampleId :
 G2(0-6)



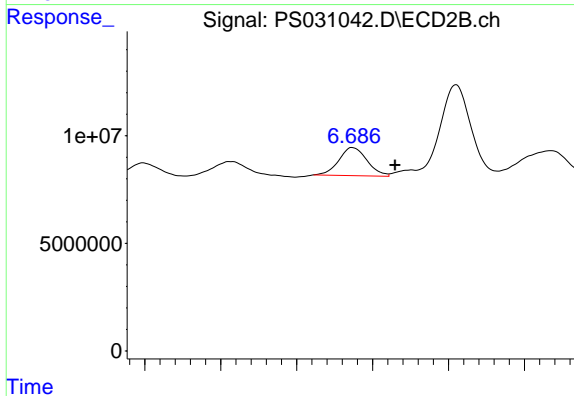
#1 Dalapon

R.T.: 2.694 min
 Delta R.T.: -0.014 min
 Response: 2408044397
 Conc: 847.05 ng/ml



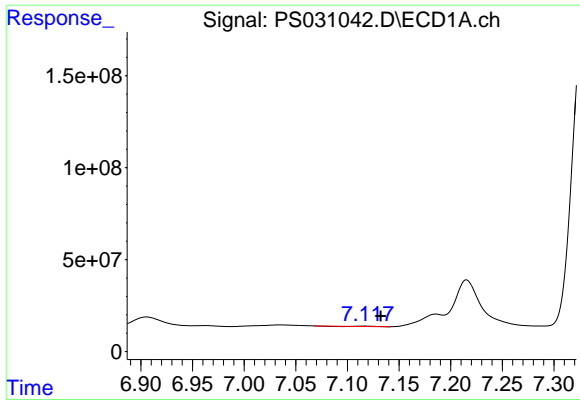
#2 3,5-DICHLOROBENZOIC ACID

R.T.: 6.506 min
 Delta R.T.: 0.013 min
 Response: 20036978
 Conc: 3.82 ng/ml



#2 3,5-DICHLOROBENZOIC ACID

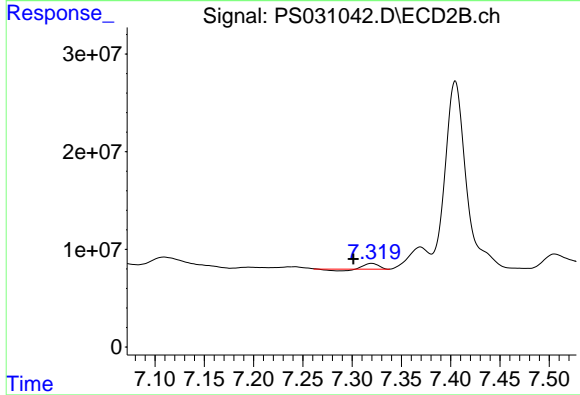
R.T.: 6.687 min
 Delta R.T.: -0.028 min
 Response: 16858475
 Conc: 10.87 ng/ml



#3 4-Nitrophenol

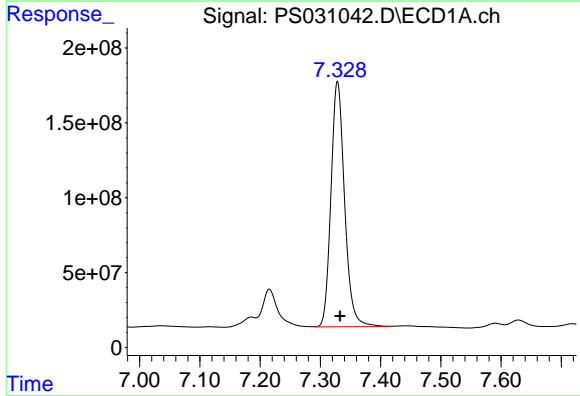
R.T.: 7.117 min
 Delta R.T.: -0.015 min
 Response: 475269
 Conc: N.D.

Instrument :
 ECD_S
 ClientSampleId :
 G2(0-6)



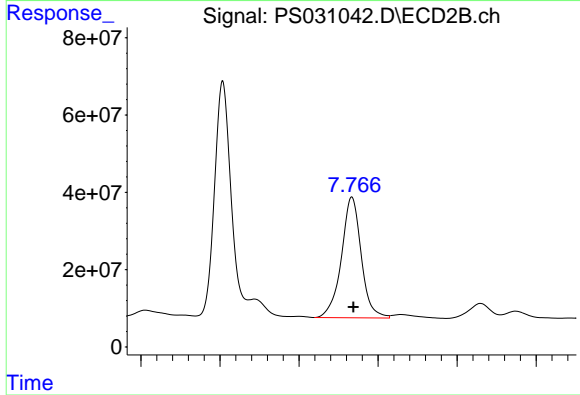
#3 4-Nitrophenol

R.T.: 7.320 min
 Delta R.T.: 0.018 min
 Response: 4121114
 Conc: 2.36 ng/ml



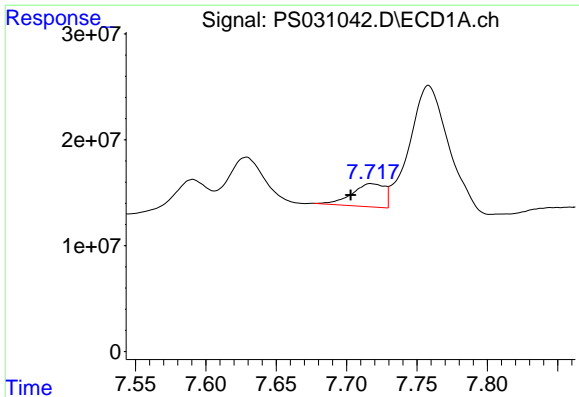
#4 2,4-DCAA

R.T.: 7.329 min
 Delta R.T.: -0.004 min
 Response: 2572332957
 Conc: 650.39 ng/ml



#4 2,4-DCAA

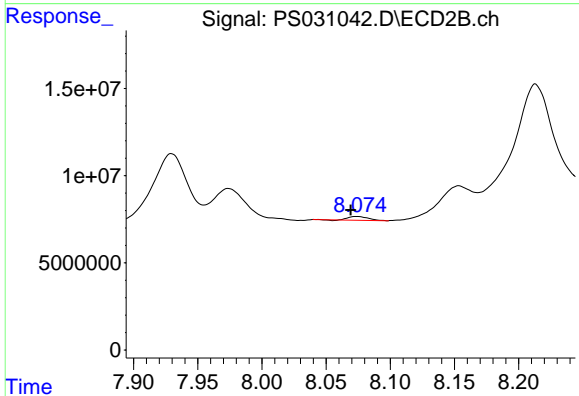
R.T.: 7.767 min
 Delta R.T.: -0.002 min
 Response: 544597395
 Conc: 525.66 ng/ml



#6 MCP

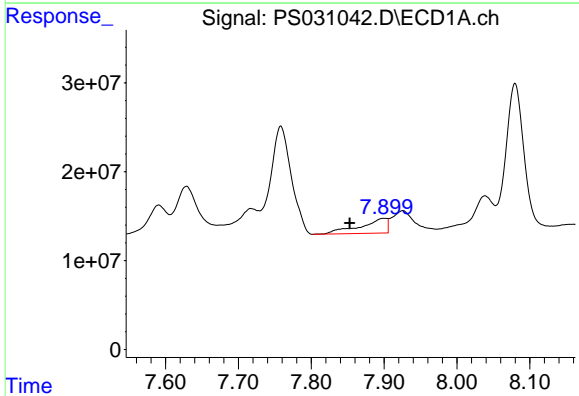
R.T.: 7.717 min
 Delta R.T.: 0.014 min
 Response: 35440557
 Conc: 3.85 ug/ml

Instrument :
 ECD_S
 ClientSampleId :
 G2(0-6)



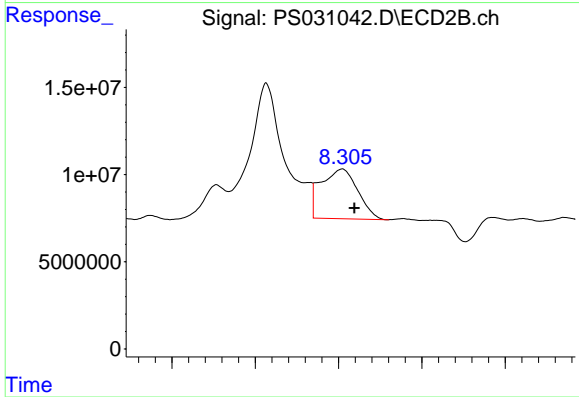
#6 MCP

R.T.: 8.074 min
 Delta R.T.: 0.005 min
 Response: 2276485
 Conc: 1.06 ug/ml



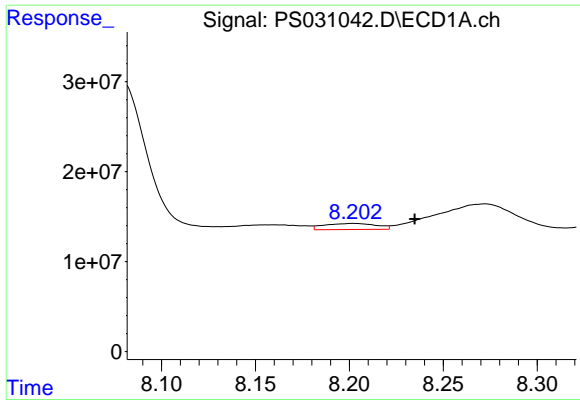
#7 MCP

R.T.: 7.900 min
 Delta R.T.: 0.047 min
 Response: 42031473
 Conc: 3.85 ug/ml



#7 MCP

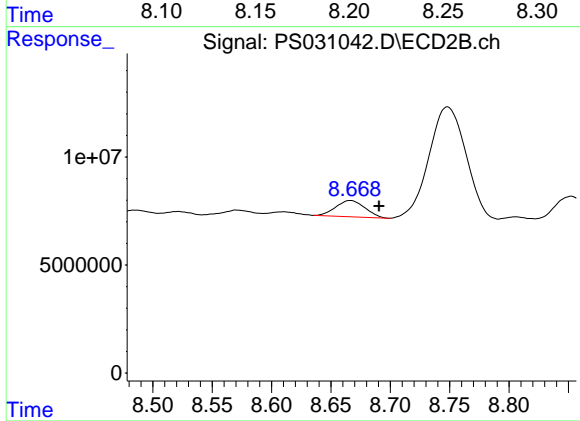
R.T.: 8.304 min
 Delta R.T.: -0.015 min
 Response: 87193053
 Conc: 27.20 ug/ml



#8 DICHLORPROP

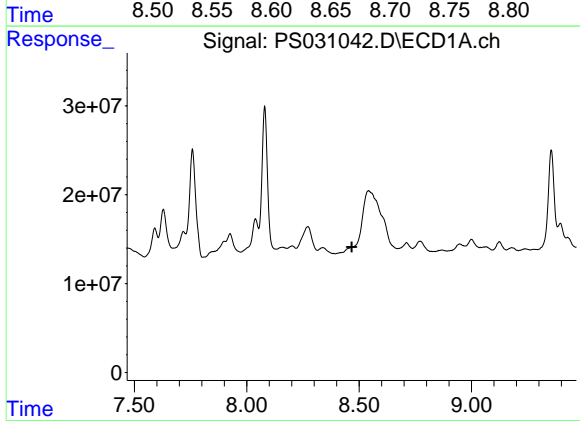
R.T.: 8.202 min
 Delta R.T.: -0.033 min
 Response: 13085922
 Conc: 3.84 ng/ml

Instrument :
 ECD_S
 ClientSampleId :
 G2(0-6)



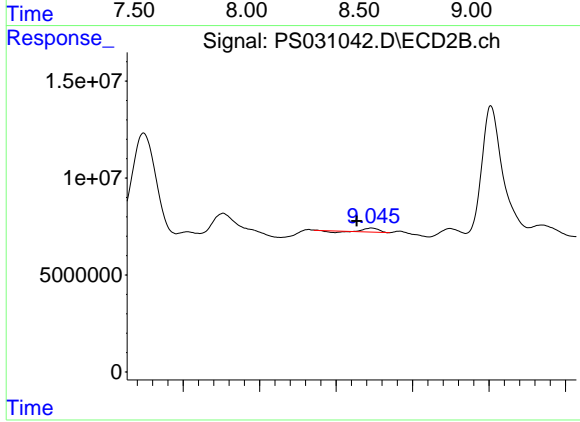
#8 DICHLORPROP

R.T.: 8.666 min
 Delta R.T.: -0.024 min
 Response: 12848391
 Conc: 8.46 ng/ml



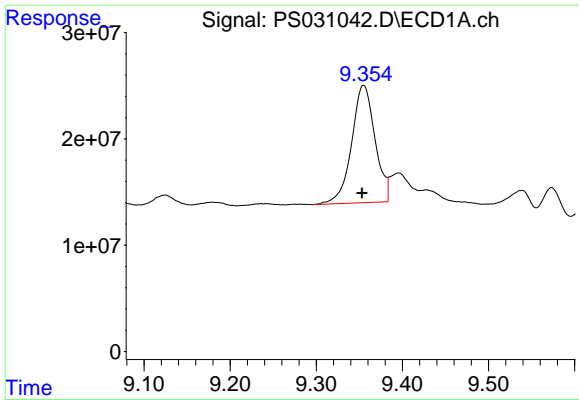
#9 2,4-D

R.T.: 0.000 min
 Exp R.T.: 8.467 min
 Response: 0
 Conc: N.D.



#9 2,4-D

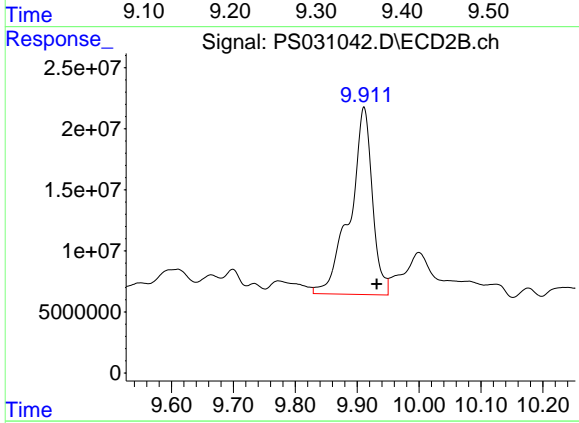
R.T.: 9.046 min
 Delta R.T.: 0.019 min
 Response: 2018842
 Conc: 1.19 ng/ml



#11 2,4,5-TP (SILVEX)

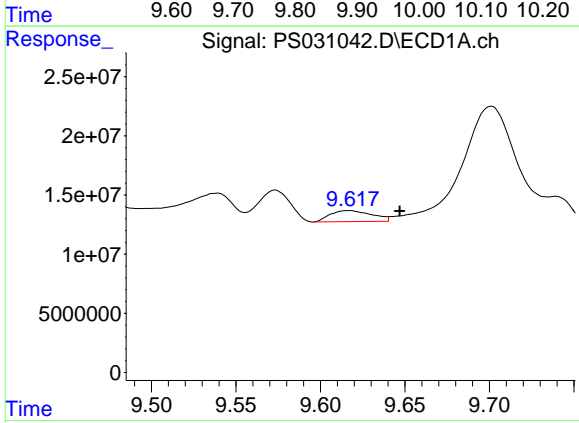
R.T.: 9.355 min
 Delta R.T.: 0.002 min
 Response: 208386615
 Conc: 11.20 ng/ml

Instrument :
 ECD_S
 ClientSampleId :
 G2(0-6)



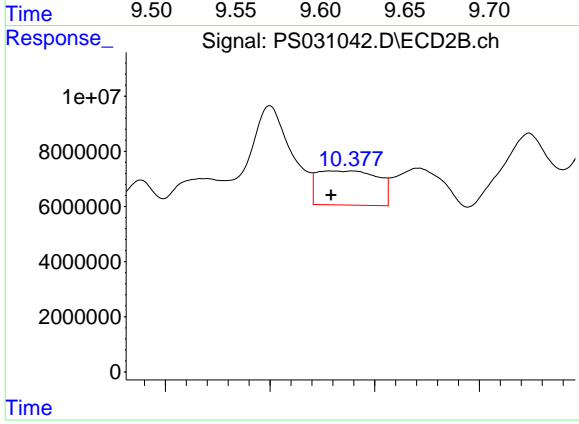
#11 2,4,5-TP (SILVEX)

R.T.: 9.911 min
 Delta R.T.: -0.021 min
 Response: 385498387
 Conc: 26.27 ng/ml



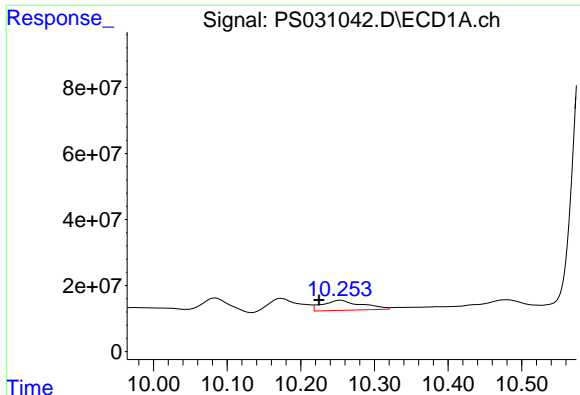
#12 2,4,5-T

R.T.: 9.617 min
 Delta R.T.: -0.030 min
 Response: 16052522
 Conc: 1.06 ng/ml



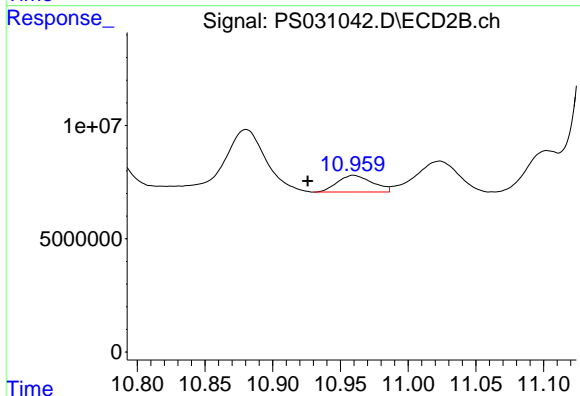
#12 2,4,5-T

R.T.: 10.358 min
 Delta R.T.: 0.000 min
 Response: 50213134
 Conc: 3.59 ng/ml

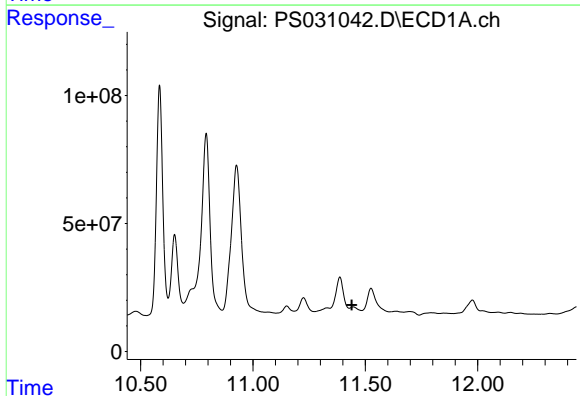


#13 2,4-DB
 R.T.: 10.253 min
 Delta R.T.: 0.028 min
 Response: 111410391
 Conc: 51.32 ng/ml

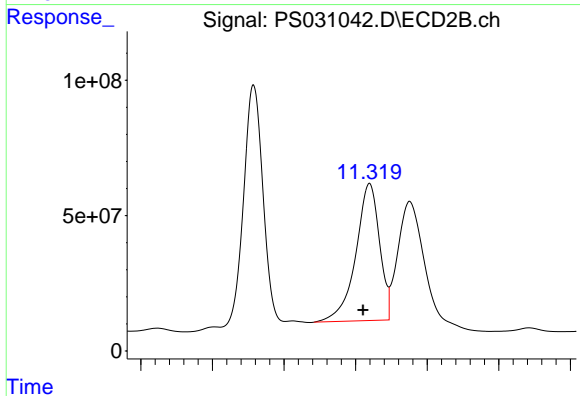
Instrument :
 ECD_S
 ClientSampleId :
 G2(0-6)



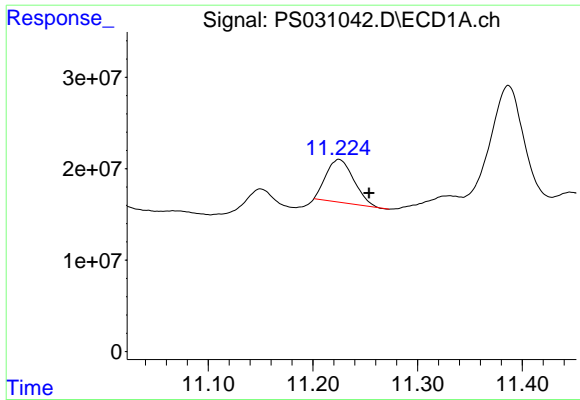
#13 2,4-DB
 R.T.: 10.960 min
 Delta R.T.: 0.034 min
 Response: 13176237
 Conc: 11.14 ng/ml



#14 DINOSEB
 R.T.: 11.446 min
 Delta R.T.: 0.007 min
 Response: -87875524
 Conc: N.D.



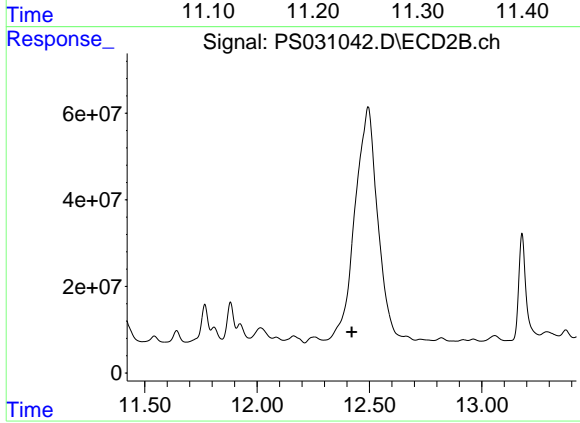
#14 DINOSEB
 R.T.: 11.319 min
 Delta R.T.: 0.009 min
 Response: 1167064189
 Conc: 102.81 ng/ml



#15 Picloram

R.T.: 11.225 min
Delta R.T.: -0.029 min
Response: 85673589
Conc: 5.88 ng/ml

Instrument :
ECD_S
ClientSampleId :
G2(0-6)



#15 Picloram

R.T.: 0.000 min
Exp R.T. : 12.421 min
Response: 0
Conc: N.D.