

Data Path : Z:\pestpcbsrv\HPCHEM1\ECD\_S\Data\PS071525\  
 Data File : PS031044.D  
 Signal(s) : Signal #1: ECD1A.ch Signal #2: ECD2B.ch  
 Acq On : 15 Jul 2025 23:11  
 Operator : AR\AJ  
 Sample : Q2489-07  
 Misc :  
 ALS Vial : 23 Sample Multiplier: 1

Instrument :  
 ECD\_S  
 ClientSampleId :  
 G1(0-6)

Integration File signal 1: autoint1.e  
 Integration File signal 2: autoint2.e  
 Quant Time: Jul 16 02:51:48 2025  
 Quant Method : Z:\pestpcbsrv\HPCHEM1\ECD\_S\Method\PS071125.M  
 Quant Title : 8080.M  
 QLast Update : Mon Jul 14 05:51:06 2025  
 Response via : Initial Calibration  
 Integrator: ChemStation

Volume Inj. : 1 µl  
 Signal #1 Phase : ZB-MR1 Signal #2 Phase: ZB-MR2  
 Signal #1 Info : 30M x 0.32mm x0.5 Signal #2 Info : 30M x 0.32mm x 0.25µm

Compound	RT#1	RT#2	Resp#1	Resp#2	ng/ml	ng/ml
-----						
System Monitoring Compounds						
4) S 2,4-DCAA	7.329	7.767	2426.4E6	525.0E6	613.487	506.783
Target Compounds						
1) T Dalapon	2.667f	2.701	1950.6E6	2731.3E6	320.202	960.763 #
2) T 3,5-DICHL...	6.507	6.688f	25436251	21314111	4.856	13.748 #
3) T 4-Nitroph...	7.113	7.318	455445	1838046	<MDL	1.054 #
6) T MCPP	0.000	8.075	0	3068935	N.D.	1.435
7) T MCPA	7.850	8.307	15912490	76412245	1.459	23.837 #
8) T DICHLORPROP	8.202f	8.668	12662840	12329063	3.719	8.115 #
9) T 2,4-D	0.000	9.045	0	834626	N.D.	<MDL
10) T Pentachlo...	8.780	9.509f	7047990	11900938	<MDL	<MDL #
11) T 2,4,5-TP ...	9.354	9.911	266.7E6	413.9E6	14.329	28.203 #
12) T 2,4,5-T	9.615f	10.357	14423070	54765045	<MDL	3.914 #
13) T 2,4-DB	10.252f	10.960f	76913719	13110421	35.431	11.081 #
14) T DINOSEB	11.448	11.320	-99607342	1071.2E6	N.D.	94.362
15) T Picloram	11.224f	0.000	103.0E6	0	7.067	N.D. #
16) T DCPA	11.697f	0.000	19058399	0	<MDL	N.D. #

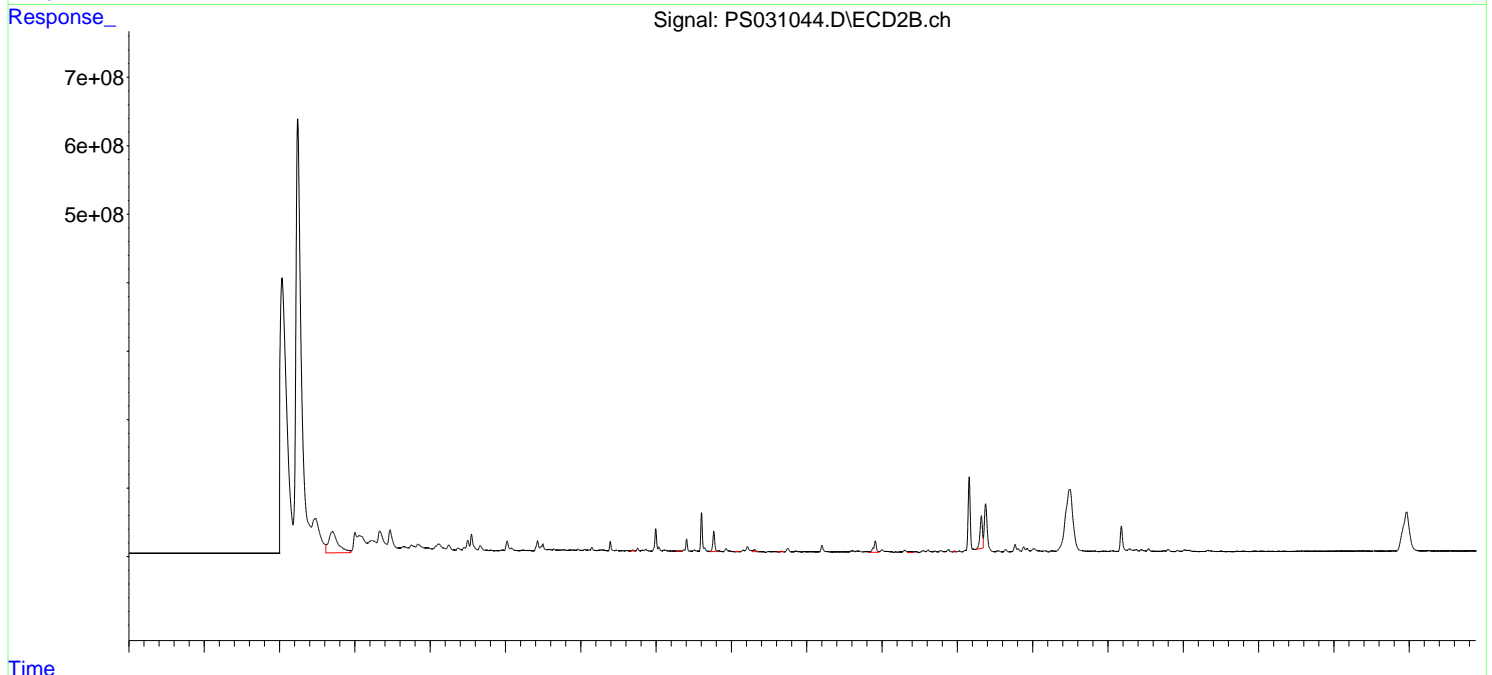
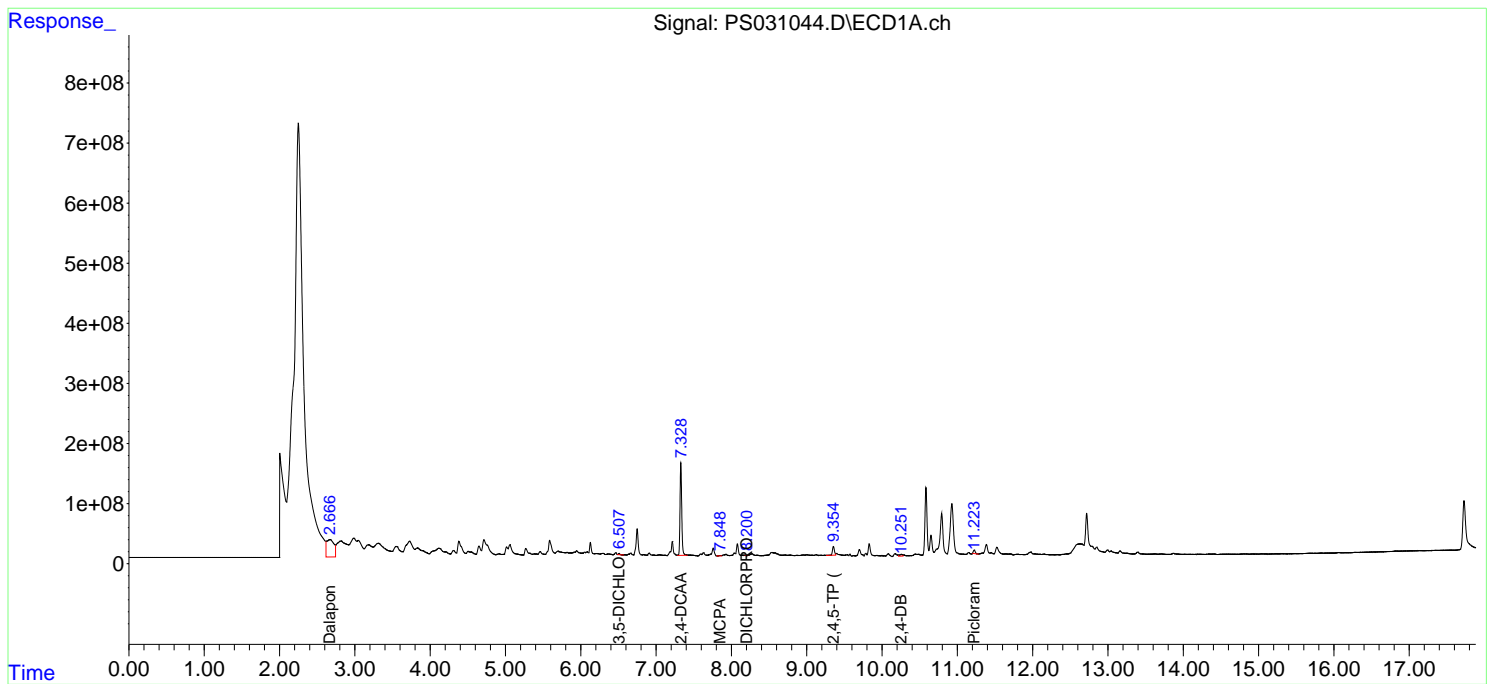
(f)=RT Delta > 1/2 Window (#)=Amounts differ by > 25% (m)=manual int.

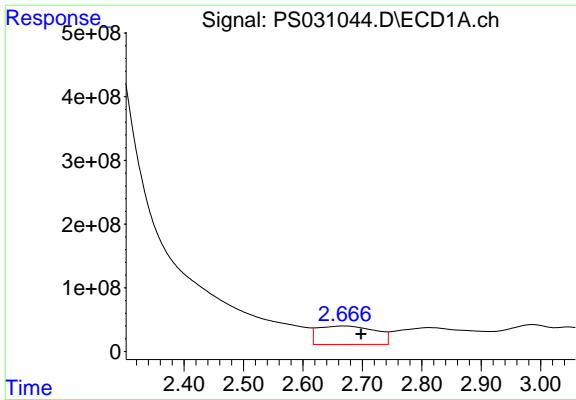
Data Path : Z:\pestpcbsrv\HPCHEM1\ECD\_S\Data\PS071525\  
 Data File : PS031044.D  
 Signal(s) : Signal #1: ECD1A.ch Signal #2: ECD2B.ch  
 Acq On : 15 Jul 2025 23:11  
 Operator : AR\AJ  
 Sample : Q2489-07  
 Misc :  
 ALS Vial : 23 Sample Multiplier: 1

Instrument :  
 ECD\_S  
 ClientSampleId :  
 G1(0-6)

Integration File signal 1: autoint1.e  
 Integration File signal 2: autoint2.e  
 Quant Time: Jul 16 02:51:48 2025  
 Quant Method : Z:\pestpcbsrv\HPCHEM1\ECD\_S\Method\PS071125.M  
 Quant Title : 8080.M  
 QLast Update : Mon Jul 14 05:51:06 2025  
 Response via : Initial Calibration  
 Integrator: ChemStation

Volume Inj. : 1 µl  
 Signal #1 Phase : ZB-MR1 Signal #2 Phase: ZB-MR2  
 Signal #1 Info : 30M x 0.32mm x0.5 Signal #2 Info : 30M x 0.32mm x 0.25µm

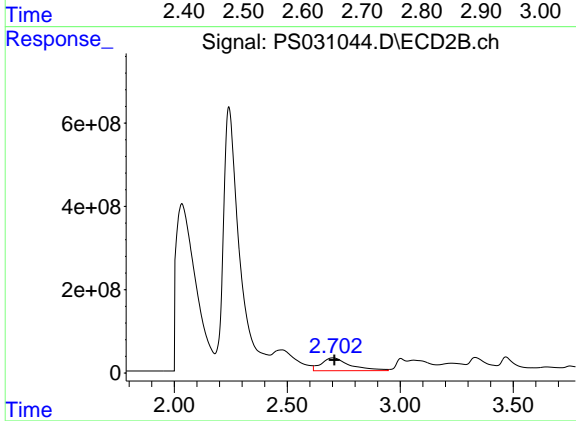




#1 Dalapon

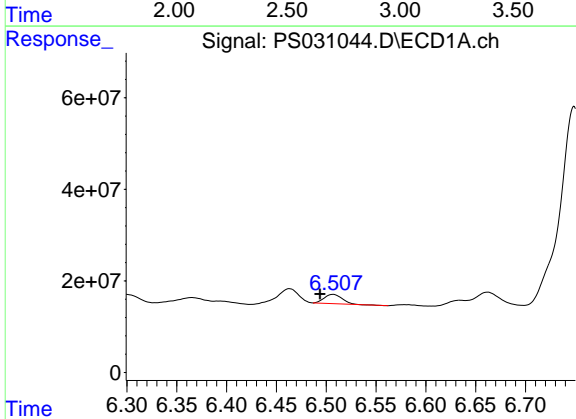
R.T.: 2.667 min  
 Delta R.T.: -0.031 min  
 Response: 1950585151  
 Conc: 320.20 ng/ml

Instrument :  
 ECD\_S  
 ClientSampleId :  
 G1(0-6)



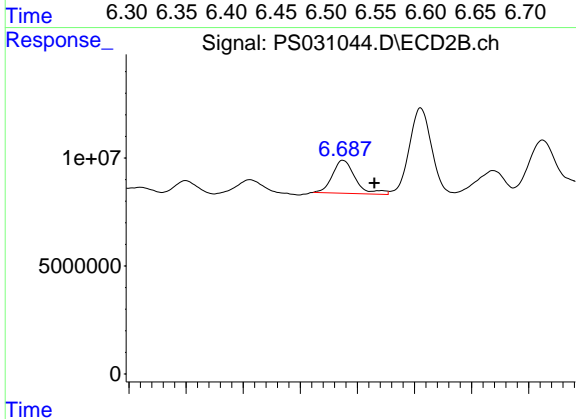
#1 Dalapon

R.T.: 2.701 min  
 Delta R.T.: -0.007 min  
 Response: 2731312434  
 Conc: 960.76 ng/ml



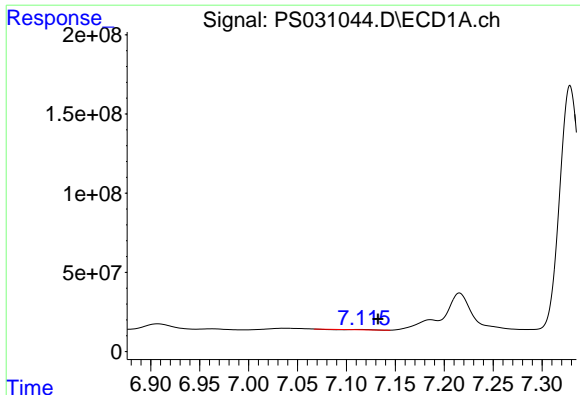
#2 3,5-DICHLOROBENZOIC ACID

R.T.: 6.507 min  
 Delta R.T.: 0.013 min  
 Response: 25436251  
 Conc: 4.86 ng/ml



#2 3,5-DICHLOROBENZOIC ACID

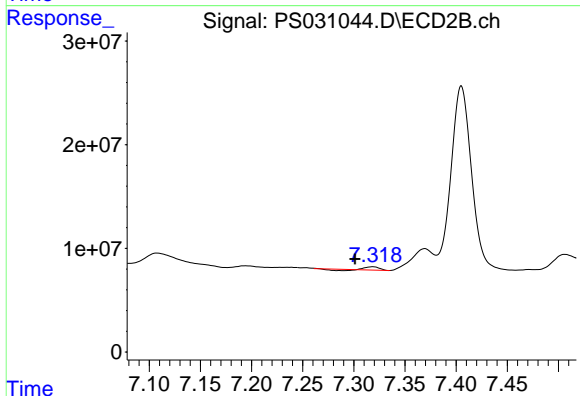
R.T.: 6.688 min  
 Delta R.T.: -0.027 min  
 Response: 21314111  
 Conc: 13.75 ng/ml



#3 4-Nitrophenol

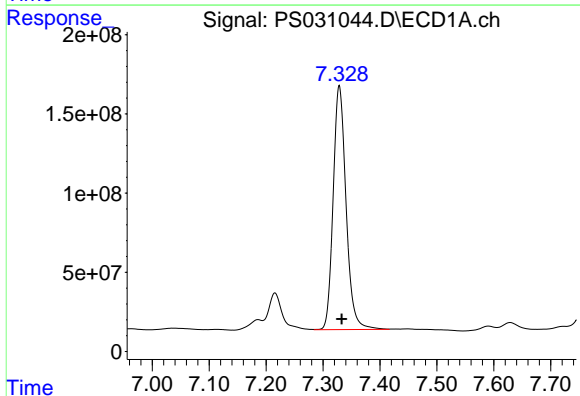
R.T.: 7.113 min  
 Delta R.T.: -0.019 min  
 Response: 455445  
 Conc: N.D.

Instrument :  
 ECD\_S  
 ClientSampleId :  
 G1(0-6)



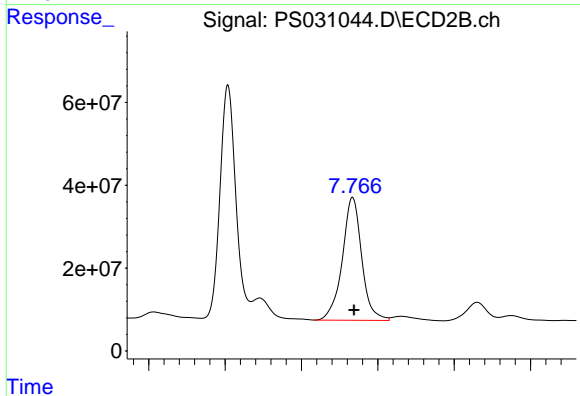
#3 4-Nitrophenol

R.T.: 7.318 min  
 Delta R.T.: 0.017 min  
 Response: 1838046  
 Conc: 1.05 ng/ml



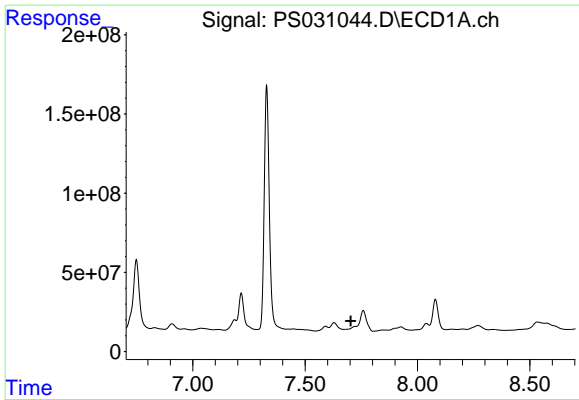
#4 2,4-DCAA

R.T.: 7.329 min  
 Delta R.T.: -0.004 min  
 Response: 2426386636  
 Conc: 613.49 ng/ml



#4 2,4-DCAA

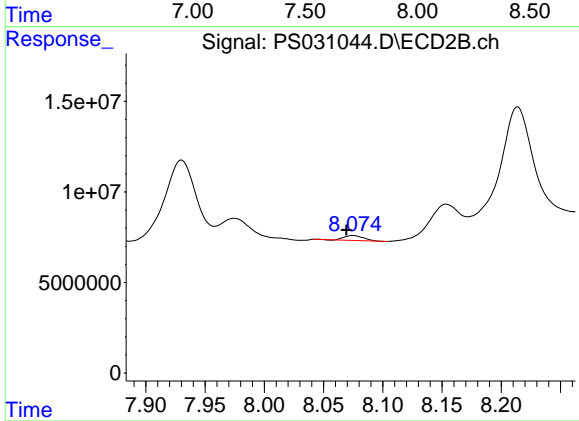
R.T.: 7.767 min  
 Delta R.T.: -0.002 min  
 Response: 525043765  
 Conc: 506.78 ng/ml



#6 MCP

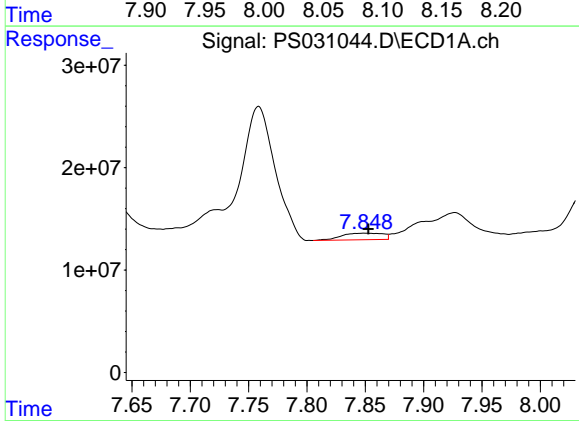
R.T.: 0.000 min  
 Exp R.T.: 7.703 min  
 Response: 0  
 Conc: N.D.

Instrument :  
 ECD\_S  
 ClientSampleId :  
 G1(0-6)



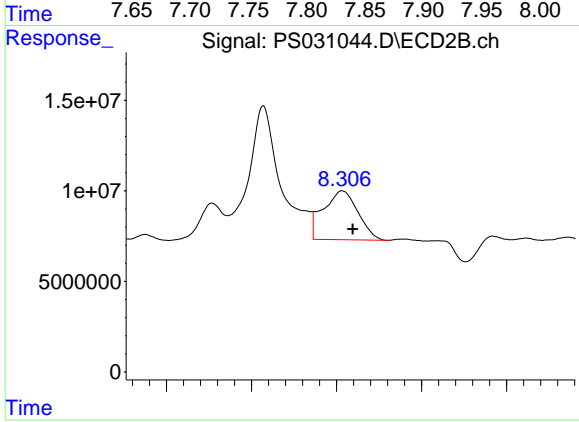
#6 MCP

R.T.: 8.075 min  
 Delta R.T.: 0.005 min  
 Response: 3068935  
 Conc: 1.44 ug/ml



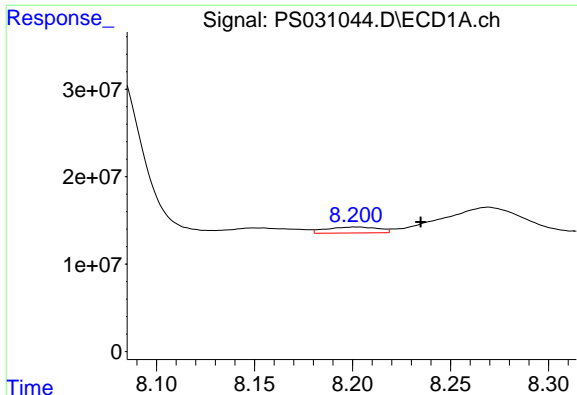
#7 MCP

R.T.: 7.850 min  
 Delta R.T.: -0.003 min  
 Response: 15912490  
 Conc: 1.46 ug/ml



#7 MCP

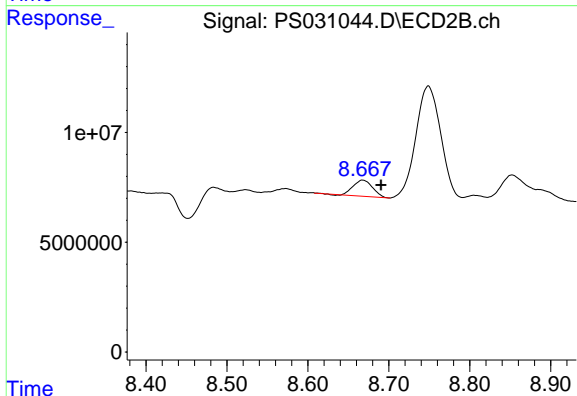
R.T.: 8.307 min  
 Delta R.T.: -0.012 min  
 Response: 76412245  
 Conc: 23.84 ug/ml



#8 DICHLORPROP

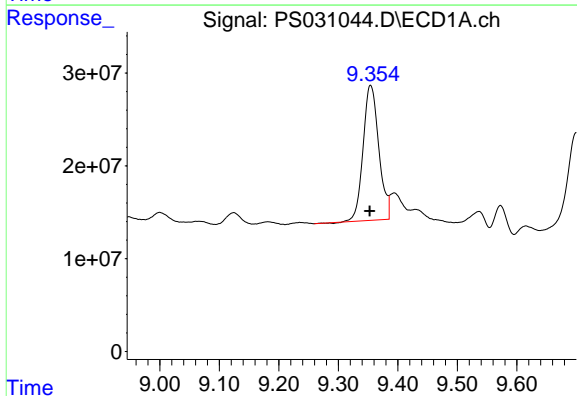
R.T.: 8.202 min  
Delta R.T.: -0.033 min  
Response: 12662840  
Conc: 3.72 ng/ml

Instrument :  
ECD\_S  
ClientSampleId :  
G1(0-6)



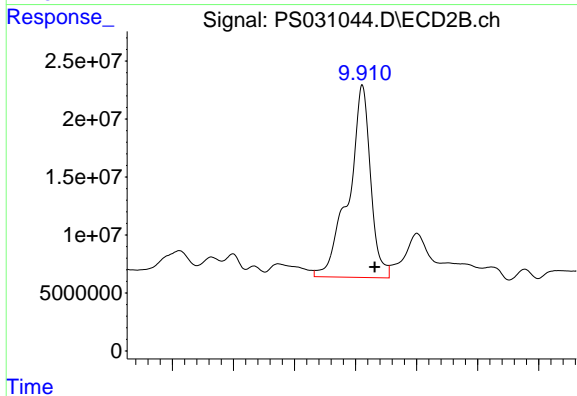
#8 DICHLORPROP

R.T.: 8.668 min  
Delta R.T.: -0.023 min  
Response: 12329063  
Conc: 8.12 ng/ml



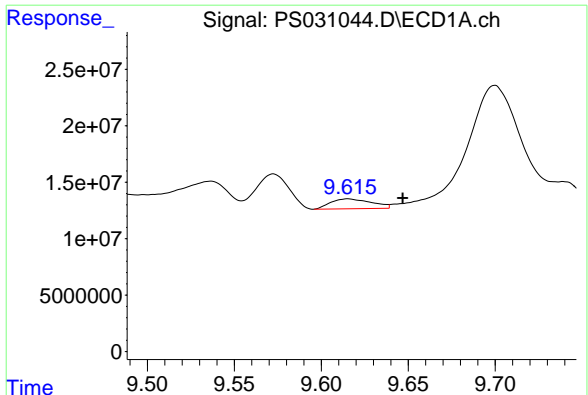
#11 2,4,5-TP (SILVEX)

R.T.: 9.354 min  
Delta R.T.: 0.001 min  
Response: 266673492  
Conc: 14.33 ng/ml



#11 2,4,5-TP (SILVEX)

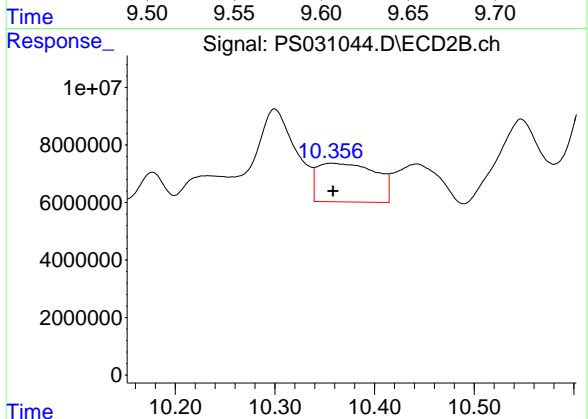
R.T.: 9.911 min  
Delta R.T.: -0.021 min  
Response: 413902102  
Conc: 28.20 ng/ml



#12 2,4,5-T

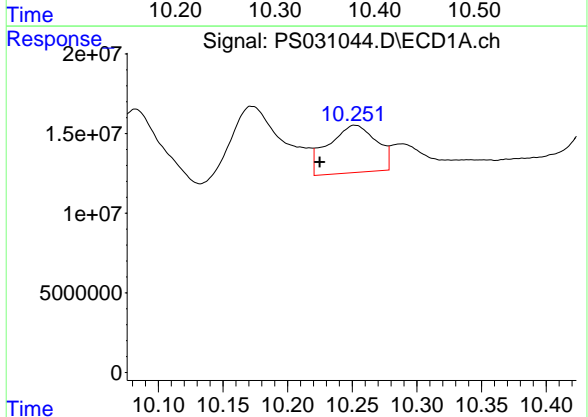
R.T.: 9.615 min  
 Delta R.T.: -0.032 min  
 Response: 14423070  
 Conc: N.D.

Instrument :  
 ECD\_S  
 ClientSampleId :  
 G1(0-6)



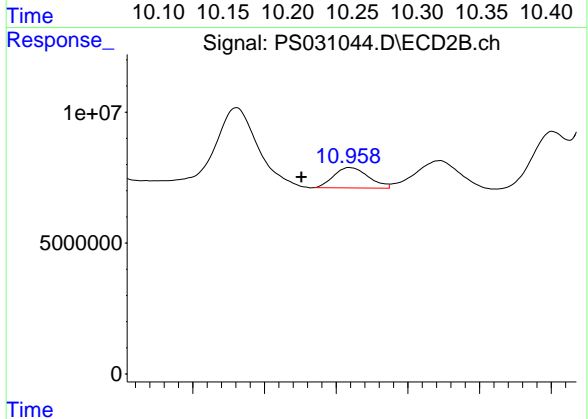
#12 2,4,5-T

R.T.: 10.357 min  
 Delta R.T.: -0.001 min  
 Response: 54765045  
 Conc: 3.91 ng/ml



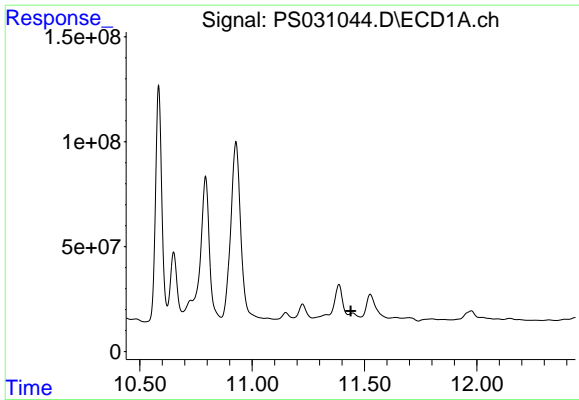
#13 2,4-DB

R.T.: 10.252 min  
 Delta R.T.: 0.027 min  
 Response: 76913719  
 Conc: 35.43 ng/ml



#13 2,4-DB

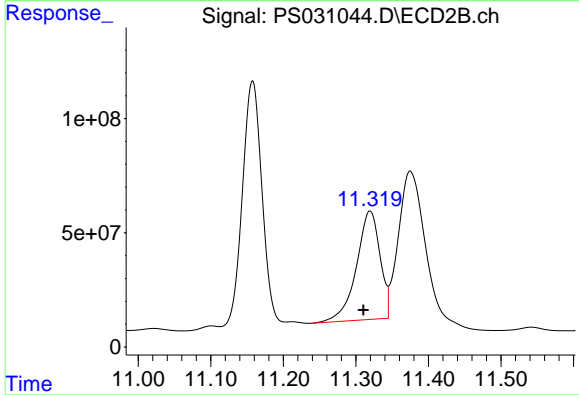
R.T.: 10.960 min  
 Delta R.T.: 0.034 min  
 Response: 13110421  
 Conc: 11.08 ng/ml



#14 DINOSEB

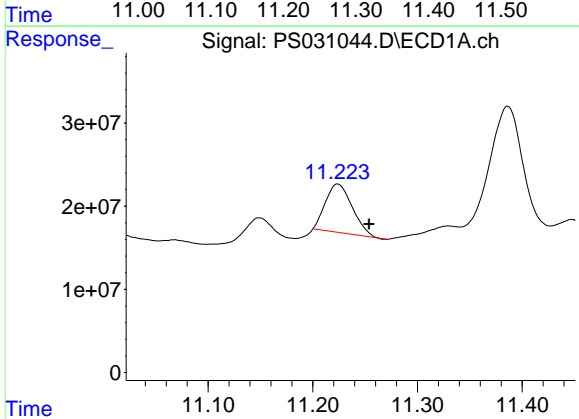
R.T.: 11.448 min  
 Delta R.T.: 0.008 min  
 Response: -99607342  
 Conc: N.D.

Instrument :  
 ECD\_S  
 ClientSampleId :  
 G1(0-6)



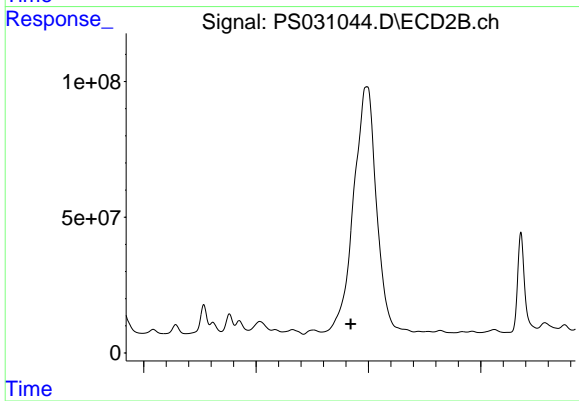
#14 DINOSEB

R.T.: 11.320 min  
 Delta R.T.: 0.009 min  
 Response: 1071154646  
 Conc: 94.36 ng/ml



#15 Picloram

R.T.: 11.224 min  
 Delta R.T.: -0.030 min  
 Response: 102975487  
 Conc: 7.07 ng/ml



#15 Picloram

R.T.: 0.000 min  
 Exp R.T. : 12.421 min  
 Response: 0  
 Conc: N.D.