

Data Path : Z:\pestpcbsrv\HPCHEM1\ECD\_S\Data\PS071525\  
 Data File : PS031045.D  
 Signal(s) : Signal #1: ECD1A.ch Signal #2: ECD2B.ch  
 Acq On : 15 Jul 2025 23:35  
 Operator : AR\AJ  
 Sample : Q2489-08  
 Misc :  
 ALS Vial : 24 Sample Multiplier: 1

Instrument :  
 ECD\_S  
 ClientSampleId :  
 G1(6-12)

Integration File signal 1: autoint1.e  
 Integration File signal 2: autoint2.e  
 Quant Time: Jul 16 02:52:01 2025  
 Quant Method : Z:\pestpcbsrv\HPCHEM1\ECD\_S\Method\PS071125.M  
 Quant Title : 8080.M  
 QLast Update : Mon Jul 14 05:51:06 2025  
 Response via : Initial Calibration  
 Integrator: ChemStation

Volume Inj. : 1 µl  
 Signal #1 Phase : ZB-MR1 Signal #2 Phase: ZB-MR2  
 Signal #1 Info : 30M x 0.32mm x0.5 Signal #2 Info : 30M x 0.32mm x 0.25µm

Compound	RT#1	RT#2	Resp#1	Resp#2	ng/ml	ng/ml
-----						
System Monitoring Compounds						
4) S 2,4-DCAA	7.328	7.766	2126.9E6	489.8E6	537.772	472.779
Target Compounds						
1) T Dalapon	2.667f	2.697	1627.9E6	2402.1E6	267.228	844.949 #
2) T 3,5-DICHL...	6.506	6.686f	25210069	17736633	4.812	11.440 #
5) T DICAMBA	7.488f	7.965	135.1E6	23059372	8.610	3.561 #
6) T MCPP	0.000	8.082	0	2866666	N.D.	1.341
7) T MCPA	7.856	8.306	23600580	102.5E6	2.164	31.962 #
8) T DICHLORPROP	8.270f	8.664f	104.4E6	7003643	30.671	4.610 #
9) T 2,4-D	0.000	9.026	0	784898	N.D.	<MDL
10) T Pentachlo...	8.779	0.000	20763366	0	<MDL	N.D. #
11) T 2,4,5-TP ...	9.355	9.911	358.7E6	406.5E6	19.274	27.701 #
12) T 2,4,5-T	9.617f	10.355	14177182	58751307	<MDL	4.199 #
13) T 2,4-DB	10.252f	10.960f	86191827	13561557	39.705	11.462 #
14) T DINOSEB	11.447	11.320	-74827358	837.5E6	N.D.	73.780
15) T Picloram	11.225f	0.000	102.6E6	0	7.042	N.D. #
16) T DCPA	11.694f	0.000	18258172	0	<MDL	N.D. #

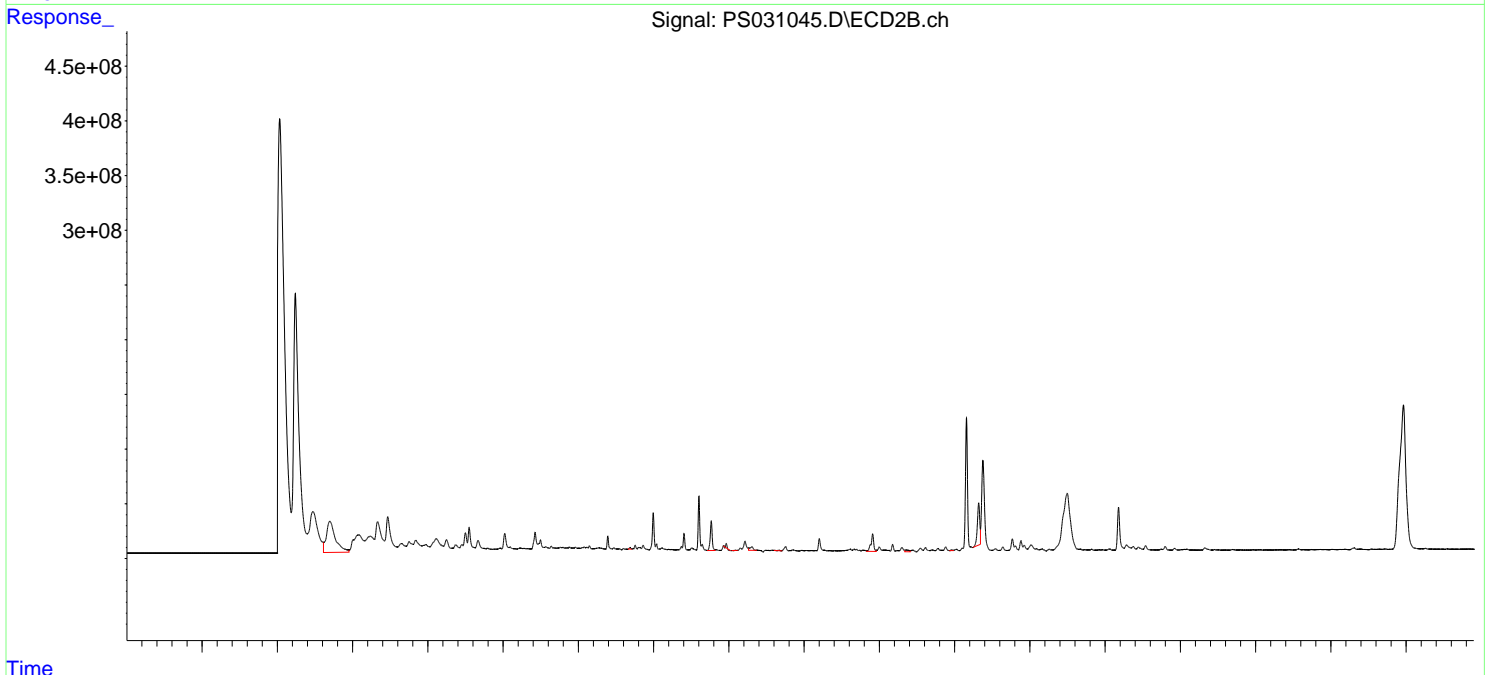
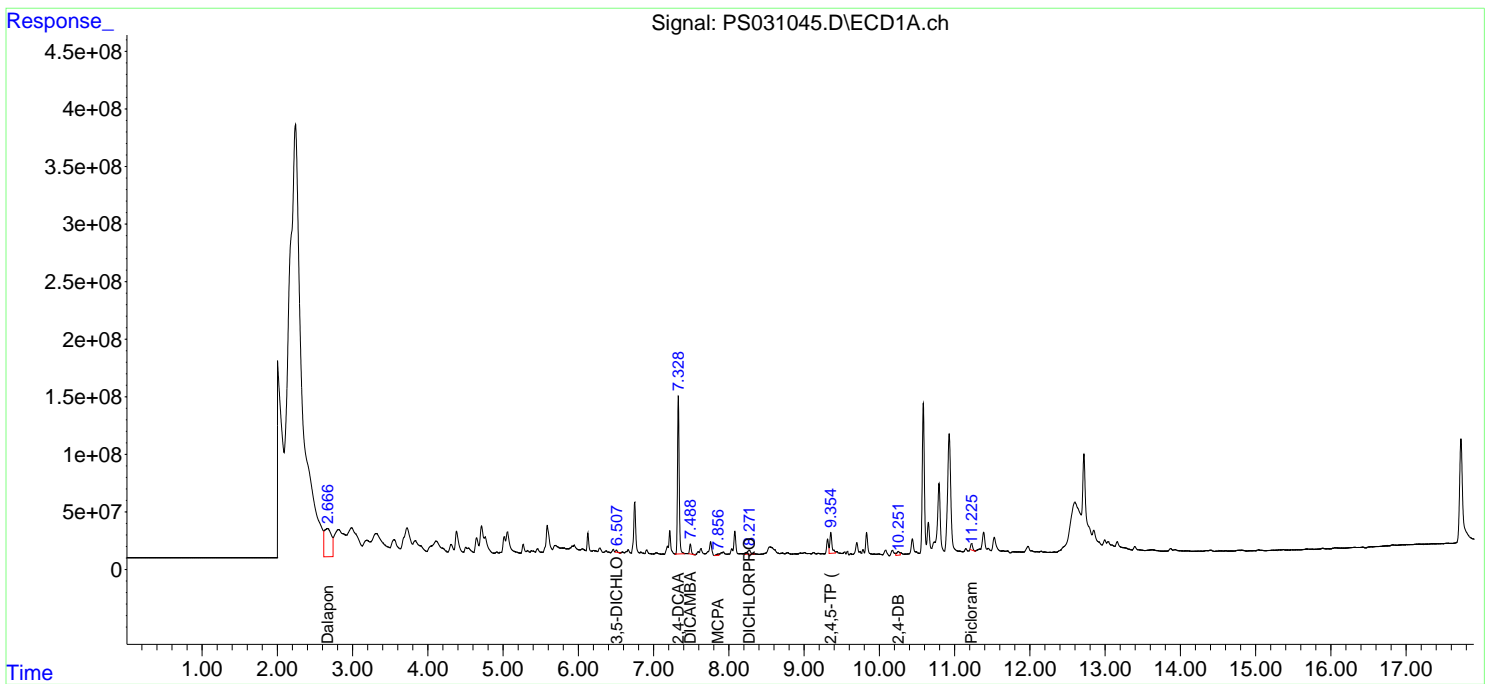
(f)=RT Delta > 1/2 Window (#)=Amounts differ by > 25% (m)=manual int.

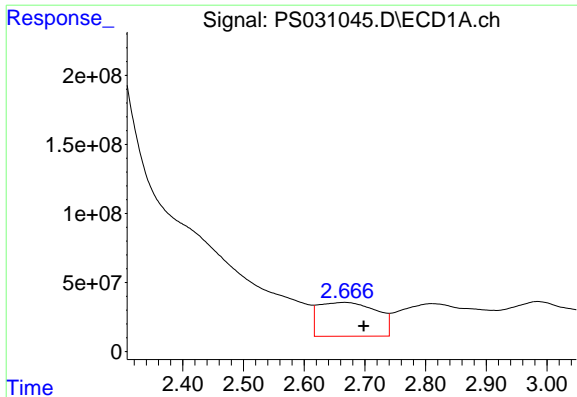
Data Path : Z:\pestpcbsrv\HPCHEM1\ECD\_S\Data\PS071525\  
 Data File : PS031045.D  
 Signal(s) : Signal #1: ECD1A.ch Signal #2: ECD2B.ch  
 Acq On : 15 Jul 2025 23:35  
 Operator : AR\AJ  
 Sample : Q2489-08  
 Misc :  
 ALS Vial : 24 Sample Multiplier: 1

Instrument :  
 ECD\_S  
 ClientSampleId :  
 G1(6-12)

Integration File signal 1: autoint1.e  
 Integration File signal 2: autoint2.e  
 Quant Time: Jul 16 02:52:01 2025  
 Quant Method : Z:\pestpcbsrv\HPCHEM1\ECD\_S\Method\PS071125.M  
 Quant Title : 8080.M  
 QLast Update : Mon Jul 14 05:51:06 2025  
 Response via : Initial Calibration  
 Integrator: ChemStation

Volume Inj. : 1 µl  
 Signal #1 Phase : ZB-MR1 Signal #2 Phase: ZB-MR2  
 Signal #1 Info : 30M x 0.32mm x0.5 Signal #2 Info : 30M x 0.32mm x 0.25µm

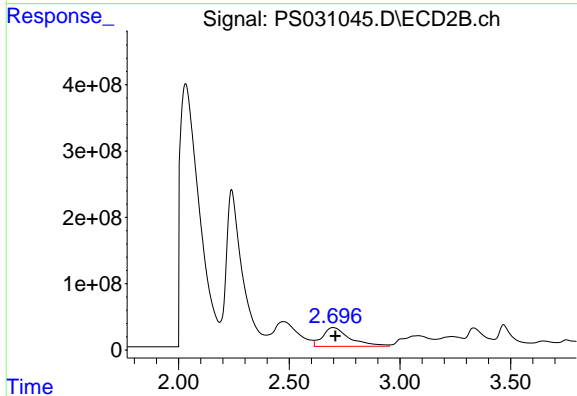




#1 Dalapon

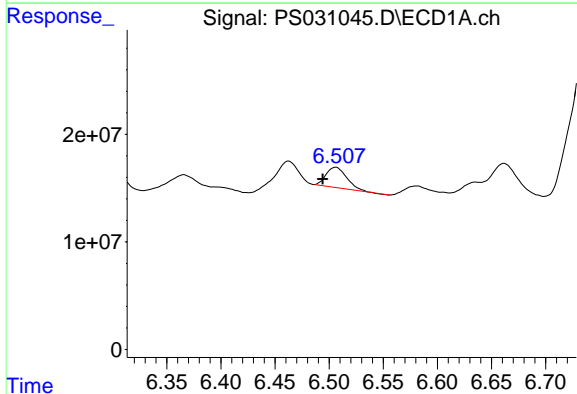
R.T.: 2.667 min  
 Delta R.T.: -0.031 min  
 Response: 1627881103  
 Conc: 267.23 ng/ml

Instrument :  
 ECD\_S  
 ClientSampleId :  
 G1(6-12)



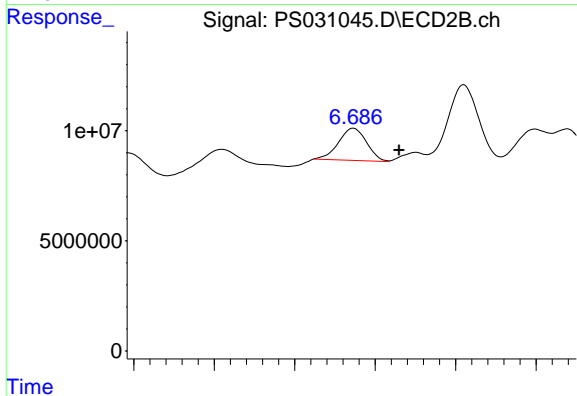
#1 Dalapon

R.T.: 2.697 min  
 Delta R.T.: -0.011 min  
 Response: 2402069680  
 Conc: 844.95 ng/ml



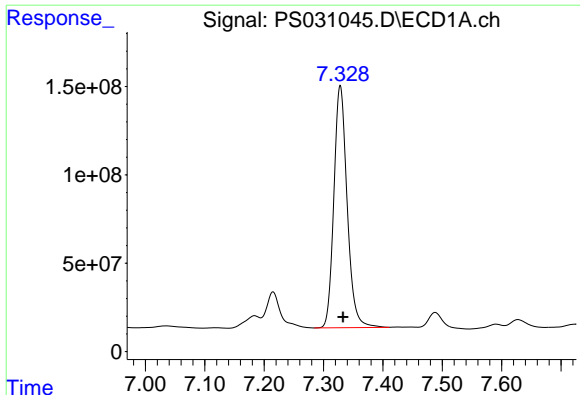
#2 3,5-DICHLOROBENZOIC ACID

R.T.: 6.506 min  
 Delta R.T.: 0.012 min  
 Response: 25210069  
 Conc: 4.81 ng/ml



#2 3,5-DICHLOROBENZOIC ACID

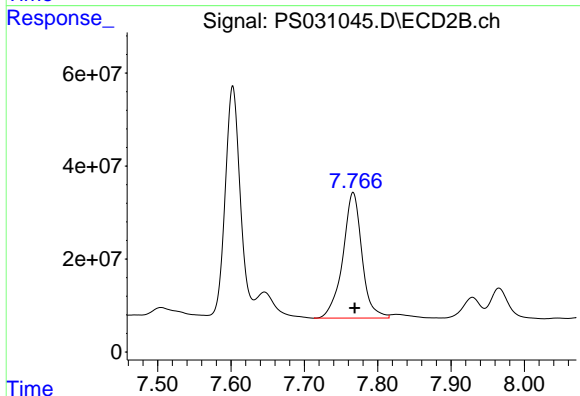
R.T.: 6.686 min  
 Delta R.T.: -0.028 min  
 Response: 17736633  
 Conc: 11.44 ng/ml



#4 2,4-DCAA

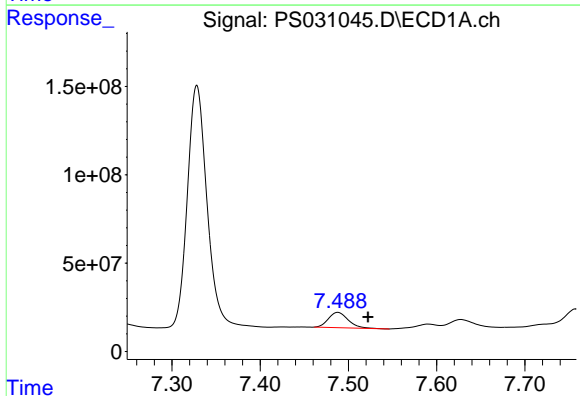
R.T.: 7.328 min  
 Delta R.T.: -0.005 min  
 Response: 2126929010  
 Conc: 537.77 ng/ml

Instrument :  
 ECD\_S  
 ClientSampleId :  
 G1(6-12)



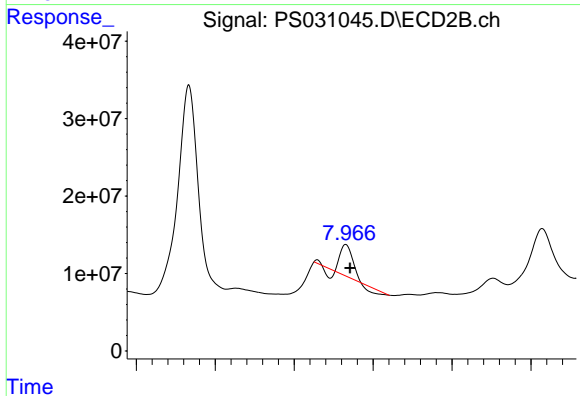
#4 2,4-DCAA

R.T.: 7.766 min  
 Delta R.T.: -0.002 min  
 Response: 489814899  
 Conc: 472.78 ng/ml



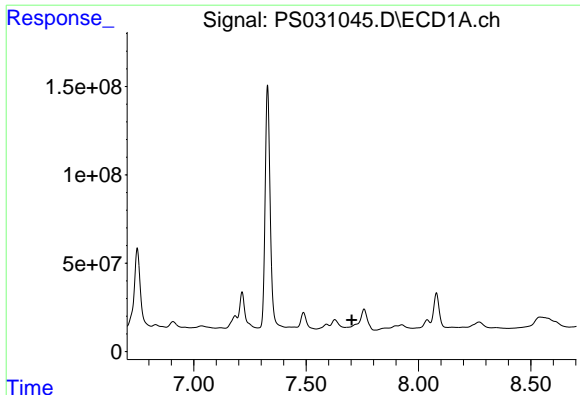
#5 DICAMBA

R.T.: 7.488 min  
 Delta R.T.: -0.034 min  
 Response: 135093247  
 Conc: 8.61 ng/ml



#5 DICAMBA

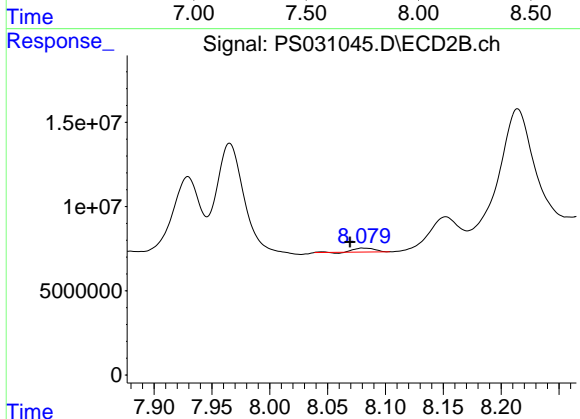
R.T.: 7.965 min  
 Delta R.T.: -0.005 min  
 Response: 23059372  
 Conc: 3.56 ng/ml



#6 MCPP

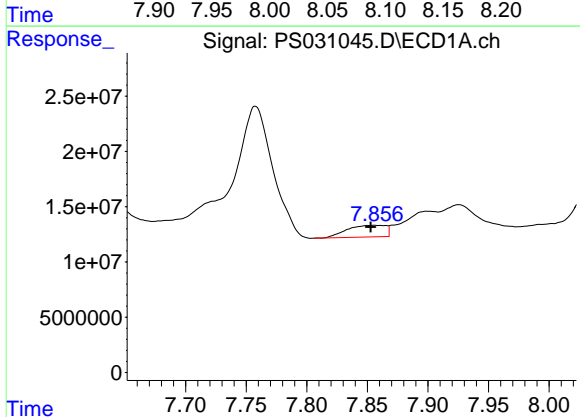
R.T.: 0.000 min  
 Exp R.T.: 7.703 min  
 Response: 0  
 Conc: N.D.

Instrument :  
 ECD\_S  
 ClientSampleId :  
 G1(6-12)



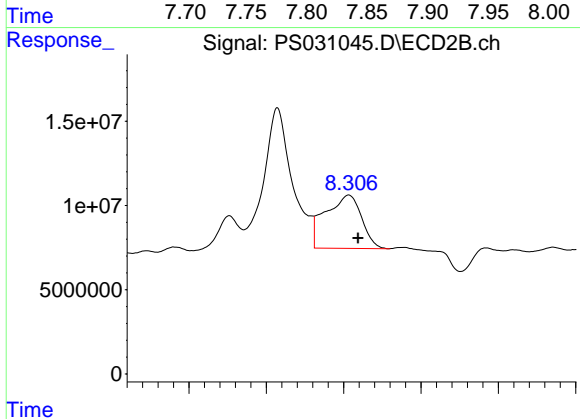
#6 MCPP

R.T.: 8.082 min  
 Delta R.T.: 0.012 min  
 Response: 2866666  
 Conc: 1.34 ug/ml



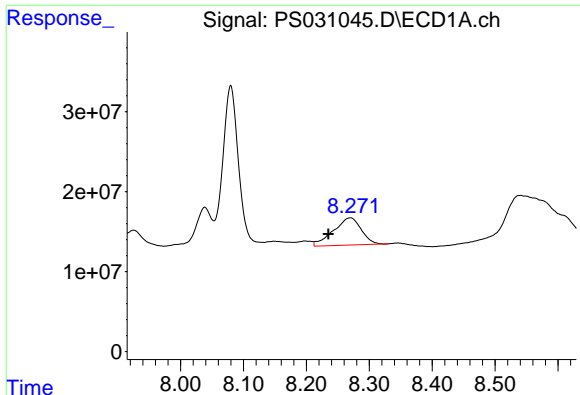
#7 MCPA

R.T.: 7.856 min  
 Delta R.T.: 0.003 min  
 Response: 23600580  
 Conc: 2.16 ug/ml



#7 MCPA

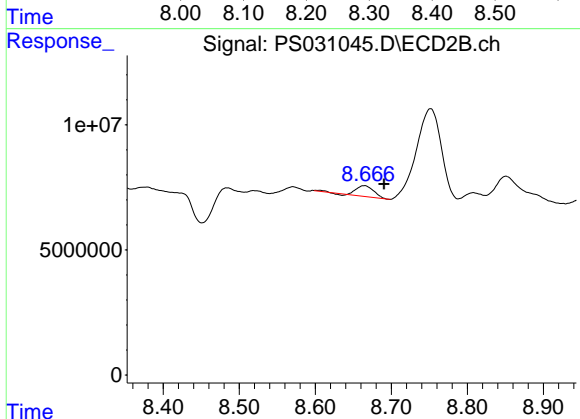
R.T.: 8.306 min  
 Delta R.T.: -0.012 min  
 Response: 102458996  
 Conc: 31.96 ug/ml



#8 DICHLORPROP

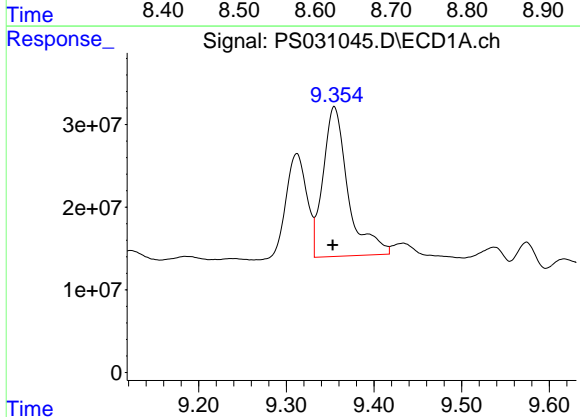
R.T.: 8.270 min  
 Delta R.T.: 0.035 min  
 Response: 104438927  
 Conc: 30.67 ng/ml

Instrument :  
 ECD\_S  
 ClientSampleId :  
 G1(6-12)



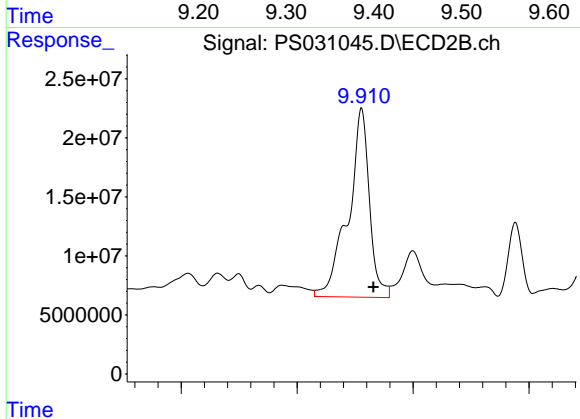
#8 DICHLORPROP

R.T.: 8.664 min  
 Delta R.T.: -0.026 min  
 Response: 7003643  
 Conc: 4.61 ng/ml



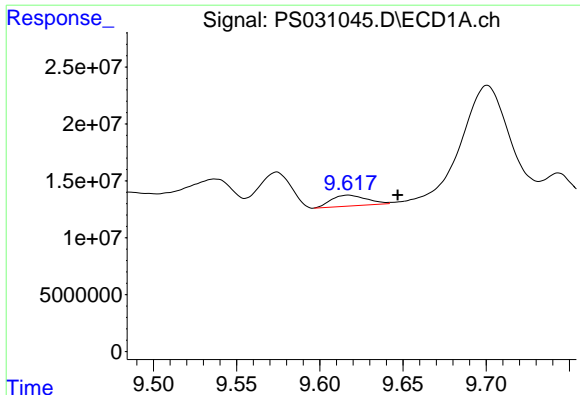
#11 2,4,5-TP (SILVEX)

R.T.: 9.355 min  
 Delta R.T.: 0.002 min  
 Response: 358703606  
 Conc: 19.27 ng/ml



#11 2,4,5-TP (SILVEX)

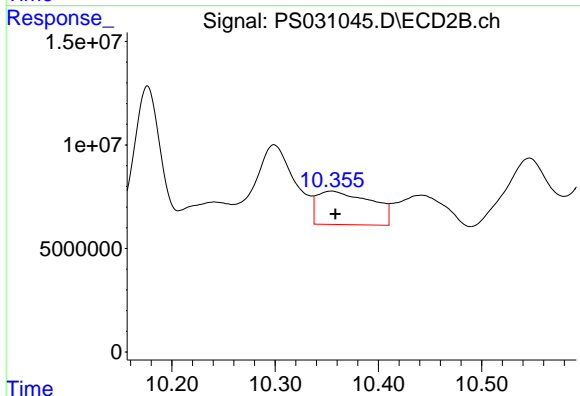
R.T.: 9.911 min  
 Delta R.T.: -0.021 min  
 Response: 406539998  
 Conc: 27.70 ng/ml



#12 2,4,5-T

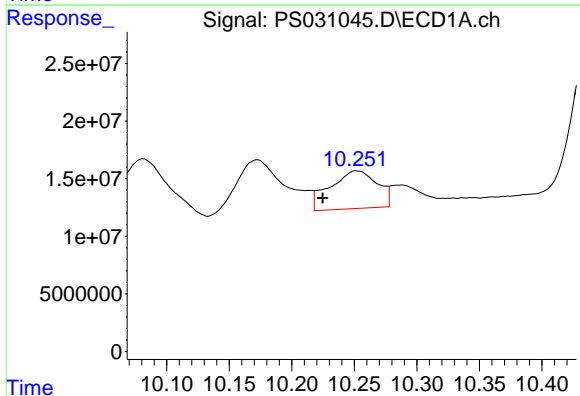
R.T.: 9.617 min  
 Delta R.T.: -0.030 min  
 Response: 14177182  
 Conc: N.D.

Instrument :  
 ECD\_S  
 ClientSampleId :  
 G1(6-12)



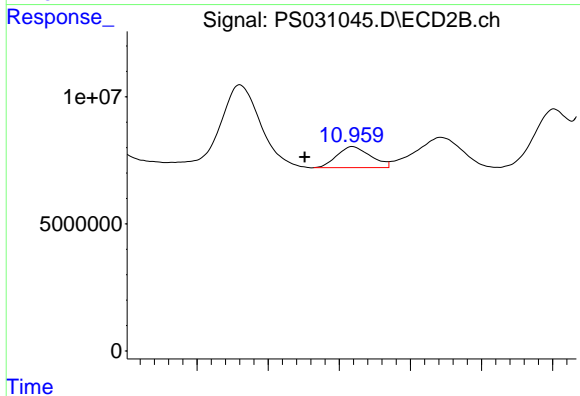
#12 2,4,5-T

R.T.: 10.355 min  
 Delta R.T.: -0.004 min  
 Response: 58751307  
 Conc: 4.20 ng/ml



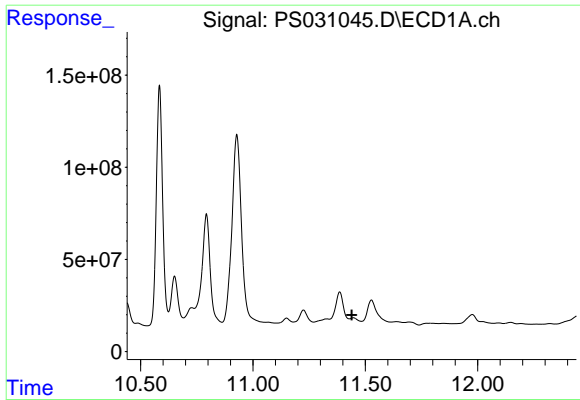
#13 2,4-DB

R.T.: 10.252 min  
 Delta R.T.: 0.027 min  
 Response: 86191827  
 Conc: 39.71 ng/ml



#13 2,4-DB

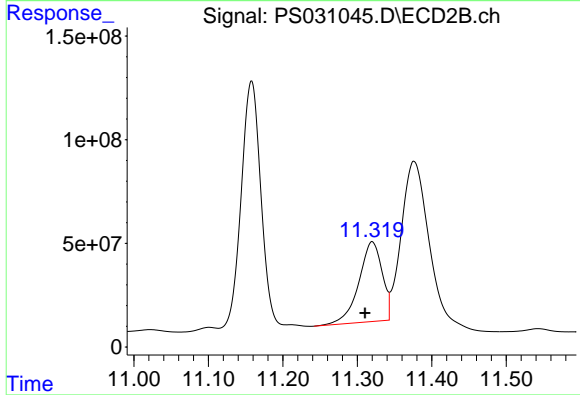
R.T.: 10.960 min  
 Delta R.T.: 0.034 min  
 Response: 13561557  
 Conc: 11.46 ng/ml



#14 DINOSEB

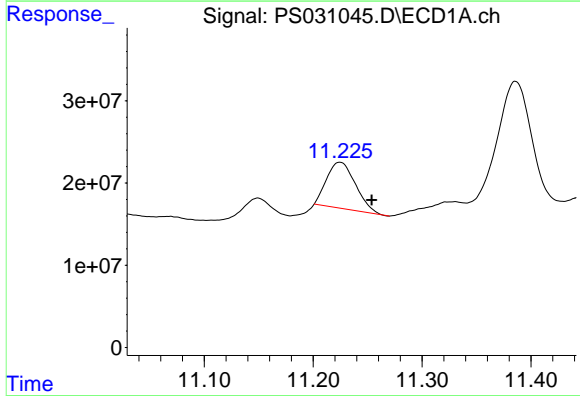
R.T.: 11.447 min  
 Delta R.T.: 0.008 min  
 Response: -74827358  
 Conc: N.D.

Instrument :  
 ECD\_S  
 ClientSampleId :  
 G1(6-12)



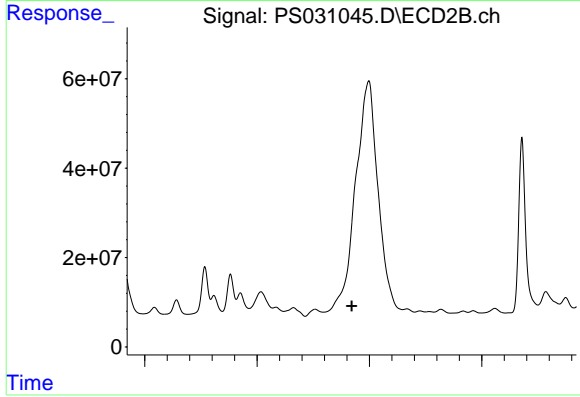
#14 DINOSEB

R.T.: 11.320 min  
 Delta R.T.: 0.010 min  
 Response: 837519211  
 Conc: 73.78 ng/ml



#15 Picloram

R.T.: 11.225 min  
 Delta R.T.: -0.029 min  
 Response: 102618253  
 Conc: 7.04 ng/ml



#15 Picloram

R.T.: 0.000 min  
 Exp R.T. : 12.421 min  
 Response: 0  
 Conc: N.D.