

Data Path : Z:\pestpcbsrv\HPCHEM1\ECD_S\Data\PS071525\
 Data File : PS031048.D
 Signal(s) : Signal #1: ECD1A.ch Signal #2: ECD2B.ch
 Acq On : 16 Jul 2025 01:36
 Operator : AR\AJ
 Sample : PB168825BL
 Misc :
 ALS Vial : 25 Sample Multiplier: 1

Instrument :
 ECD_S
 ClientSampleId :
 PB168825BL

Integration File signal 1: autoint1.e
 Integration File signal 2: autoint2.e
 Quant Time: Jul 16 02:52:25 2025
 Quant Method : Z:\pestpcbsrv\HPCHEM1\ECD_S\Method\PS071125.M
 Quant Title : 8080.M
 QLast Update : Mon Jul 14 05:51:06 2025
 Response via : Initial Calibration
 Integrator: ChemStation

Volume Inj. : 1 µl
 Signal #1 Phase : ZB-MR1 Signal #2 Phase: ZB-MR2
 Signal #1 Info : 30M x 0.32mm x0.5 Signal #2 Info : 30M x 0.32mm x 0.25µm

Compound	RT#1	RT#2	Resp#1	Resp#2	ng/ml	ng/ml

System Monitoring Compounds						
4) S 2,4-DCAA	7.330	7.767	1448.4E6	471.4E6	366.224	454.975
Target Compounds						
1) T Dalapon	2.672f	2.707	1439.8E6	2521.7E6	236.350	887.032 #
2) T 3,5-DICHL...	6.495	6.715	12422457	5143353	2.371	3.318 #
3) T 4-Nitroph...	7.125	7.327f	16856810	2777564	12.486	1.593 #
6) T MCPP	7.724	0.000	51433272	0	5.590	N.D. #
7) T MCPA	7.847	8.307	31094870	113.9E6	2.851	35.521 #
8) T DICHLORPROP	8.228	8.669	73958819	-2694099	21.720	N.D. #
9) T 2,4-D	8.479	9.027	24359223	12416314	7.913	7.306
10) T Pentachlo...	8.784	9.519f	25190540	157.7E6	<MDL	4.093 #
11) T 2,4,5-TP ...	9.317f	9.911	36990631	2121.8E6	1.988	144.575 #
12) T 2,4,5-T	9.618f	10.382	17533660	47228468	1.153	3.375 #
13) T 2,4-DB	10.254f	10.959f	206.6E6	30754942	95.154	25.993 #
15) T Picloram	11.242	12.431	26222149	241.7E6	1.799	10.294 #
16) T DCPA	11.698f	12.356	64867656	69721999	2.710	3.092

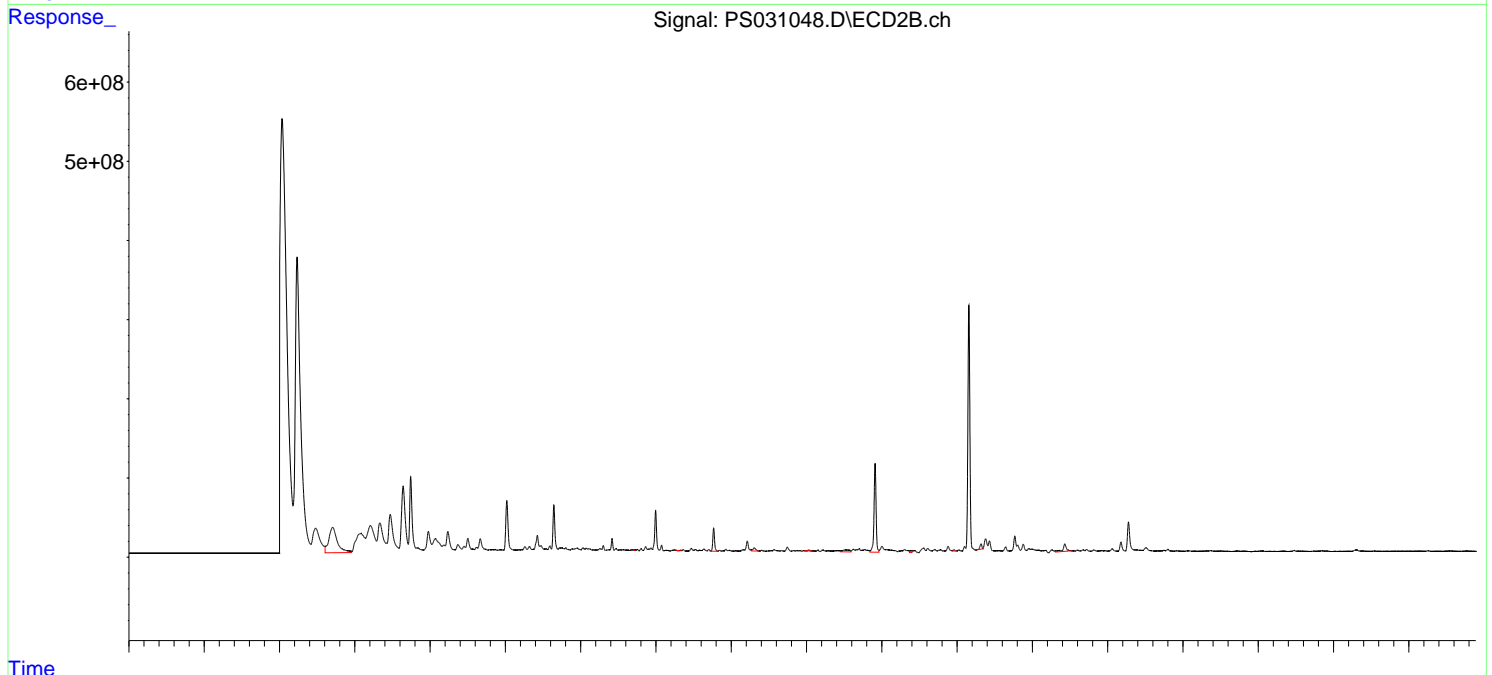
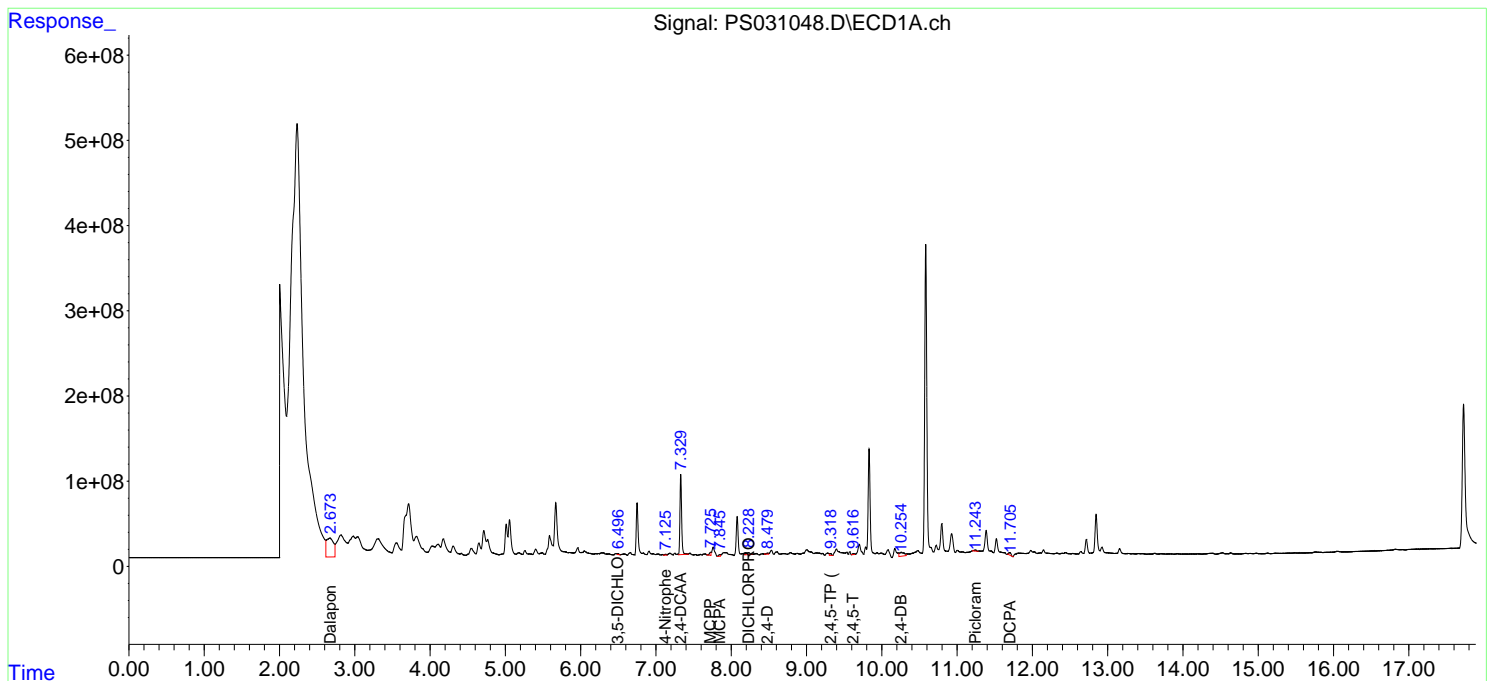
(f)=RT Delta > 1/2 Window (#)=Amounts differ by > 25% (m)=manual int.

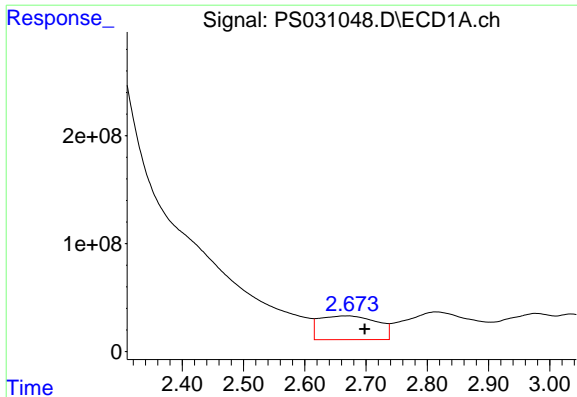
Data Path : Z:\pestpcbsrv\HPCHEM1\ECD_S\Data\PS071525\
Data File : PS031048.D
Signal(s) : Signal #1: ECD1A.ch Signal #2: ECD2B.ch
Acq On : 16 Jul 2025 01:36
Operator : AR\AJ
Sample : PB168825BL
Misc :
ALS Vial : 25 Sample Multiplier: 1

Instrument :
ECD_S
ClientSampleId :
PB168825BL

Integration File signal 1: autoint1.e
Integration File signal 2: autoint2.e
Quant Time: Jul 16 02:52:25 2025
Quant Method : Z:\pestpcbsrv\HPCHEM1\ECD_S\Method\PS071125.M
Quant Title : 8080.M
QLast Update : Mon Jul 14 05:51:06 2025
Response via : Initial Calibration
Integrator: ChemStation

Volume Inj. : 1 µl
Signal #1 Phase : ZB-MR1 Signal #2 Phase: ZB-MR2
Signal #1 Info : 30M x 0.32mm x0.5 Signal #2 Info : 30M x 0.32mm x 0.25µm

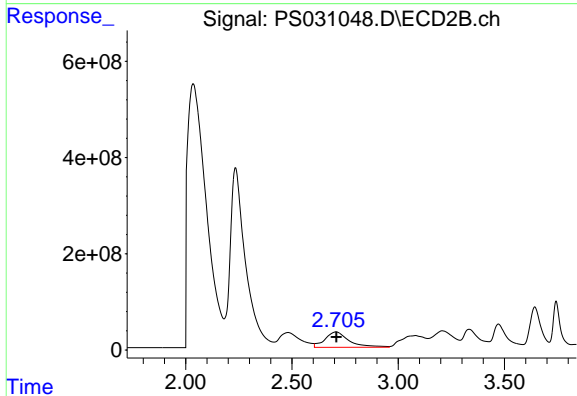




#1 Dalapon

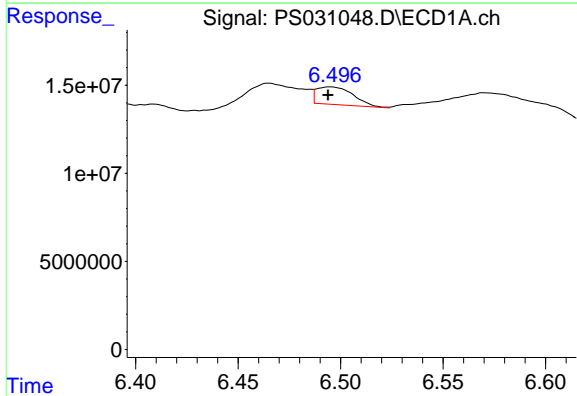
R.T.: 2.672 min
 Delta R.T.: -0.026 min
 Response: 1439780087
 Conc: 236.35 ng/ml

Instrument :
 ECD_S
 ClientSampleId :
 PB168825BL



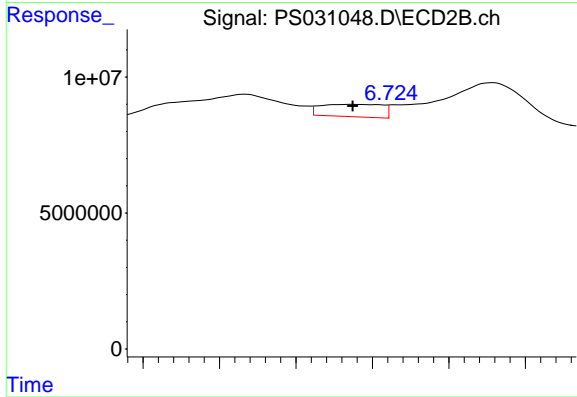
#1 Dalapon

R.T.: 2.707 min
 Delta R.T.: -0.002 min
 Response: 2521708009
 Conc: 887.03 ng/ml



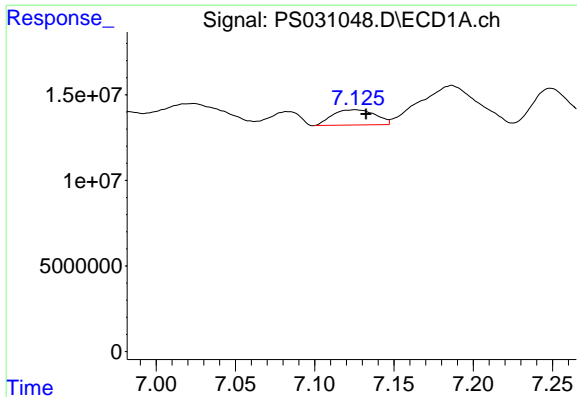
#2 3,5-DICHLOROBENZOIC ACID

R.T.: 6.495 min
 Delta R.T.: 0.000 min
 Response: 12422457
 Conc: 2.37 ng/ml



#2 3,5-DICHLOROBENZOIC ACID

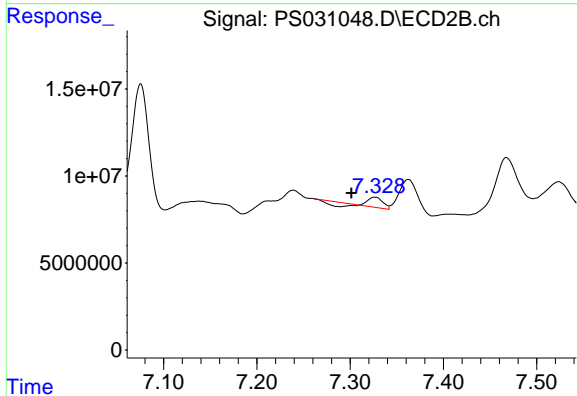
R.T.: 6.715 min
 Delta R.T.: 0.000 min
 Response: 5143353
 Conc: 3.32 ng/ml



#3 4-Nitrophenol

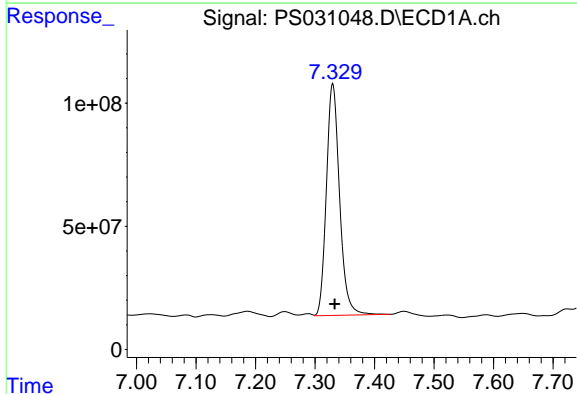
R.T.: 7.125 min
 Delta R.T.: -0.007 min
 Response: 16856810
 Conc: 12.49 ng/ml

Instrument :
 ECD_S
 ClientSampleId :
 PB168825BL



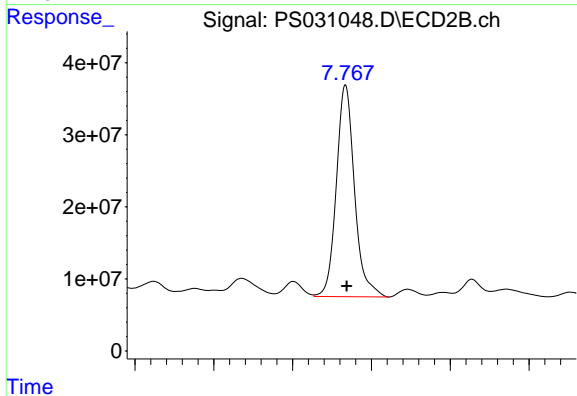
#3 4-Nitrophenol

R.T.: 7.327 min
 Delta R.T.: 0.025 min
 Response: 2777564
 Conc: 1.59 ng/ml



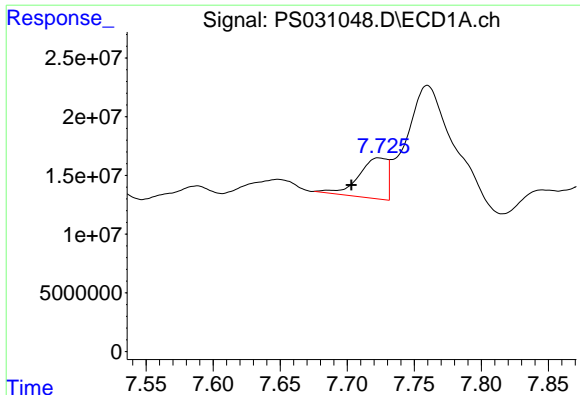
#4 2,4-DCAA

R.T.: 7.330 min
 Delta R.T.: -0.003 min
 Response: 1448444218
 Conc: 366.22 ng/ml



#4 2,4-DCAA

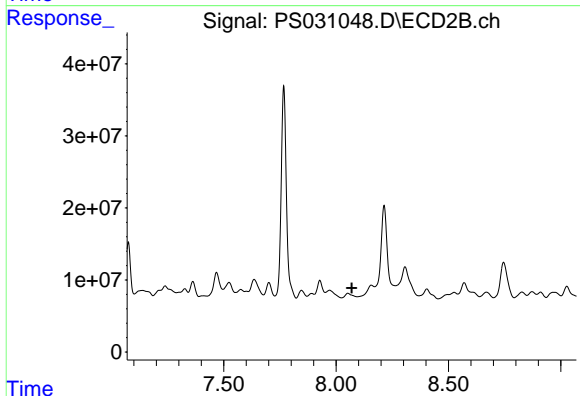
R.T.: 7.767 min
 Delta R.T.: -0.002 min
 Response: 471368499
 Conc: 454.97 ng/ml



#6 MCPP

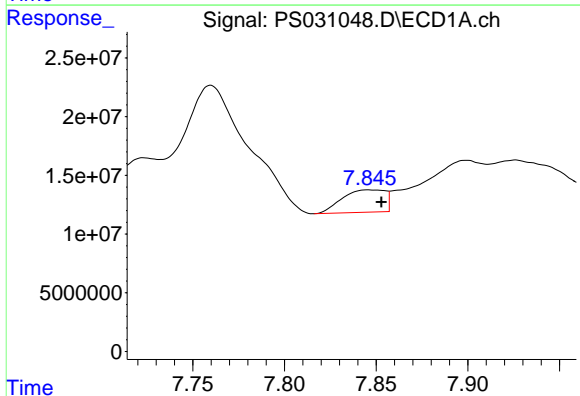
R.T.: 7.724 min
 Delta R.T.: 0.021 min
 Response: 51433272
 Conc: 5.59 ug/ml

Instrument :
 ECD_S
 ClientSampleId :
 PB168825BL



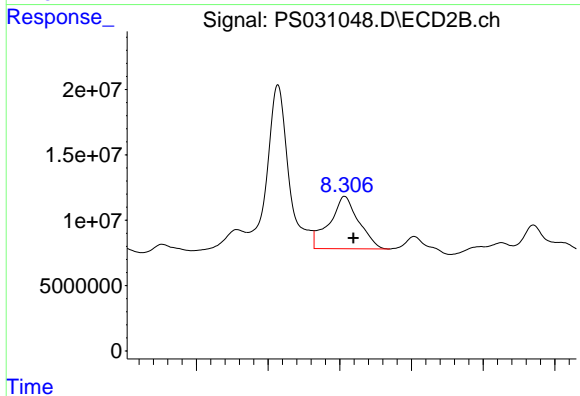
#6 MCPP

R.T.: 0.000 min
 Exp R.T. : 8.069 min
 Response: 0
 Conc: N.D.



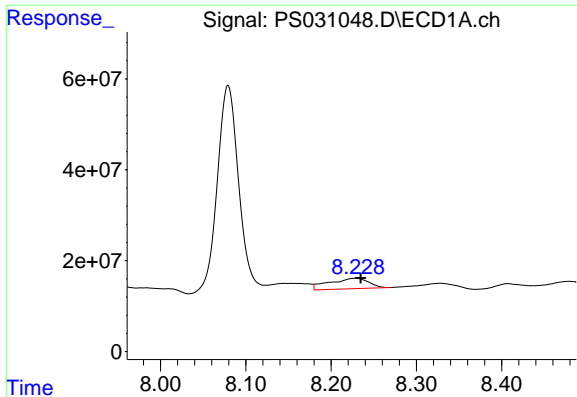
#7 MCPA

R.T.: 7.847 min
 Delta R.T.: -0.006 min
 Response: 31094870
 Conc: 2.85 ug/ml



#7 MCPA

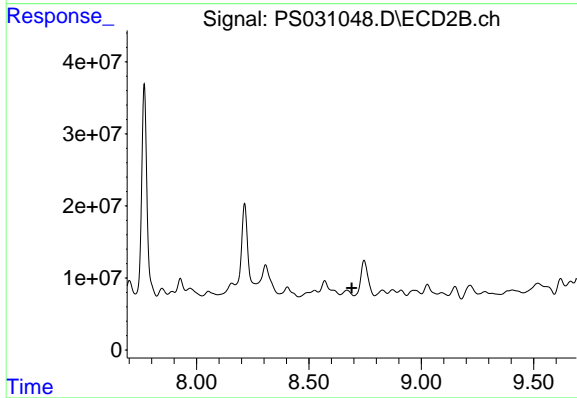
R.T.: 8.307 min
 Delta R.T.: -0.012 min
 Response: 113868469
 Conc: 35.52 ug/ml



#8 DICHLORPROP

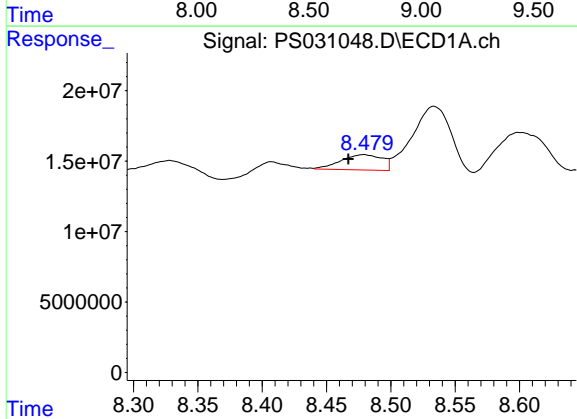
R.T.: 8.228 min
 Delta R.T.: -0.007 min
 Response: 73958819
 Conc: 21.72 ng/ml

Instrument :
 ECD_S
 ClientSampleId :
 PB168825BL



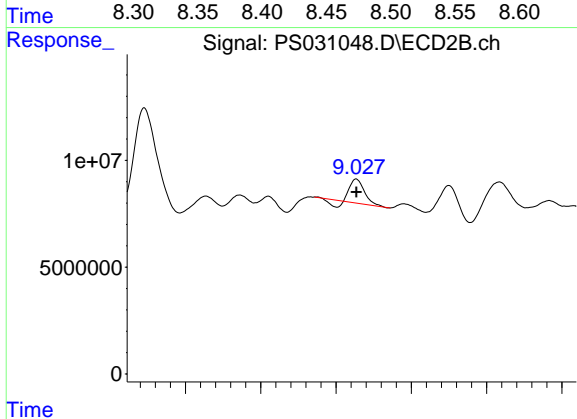
#8 DICHLORPROP

R.T.: 8.669 min
 Delta R.T.: -0.021 min
 Response: -2694099
 Conc: N.D.



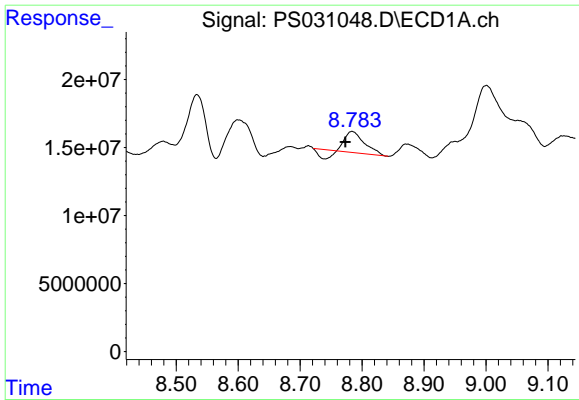
#9 2,4-D

R.T.: 8.479 min
 Delta R.T.: 0.012 min
 Response: 24359223
 Conc: 7.91 ng/ml



#9 2,4-D

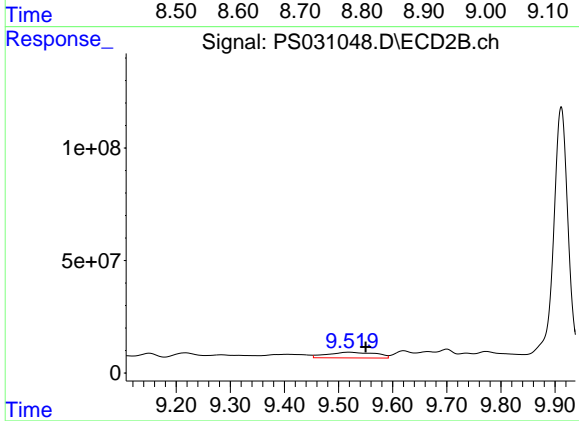
R.T.: 9.027 min
 Delta R.T.: 0.000 min
 Response: 12416314
 Conc: 7.31 ng/ml



#10 Pentachloropheno1

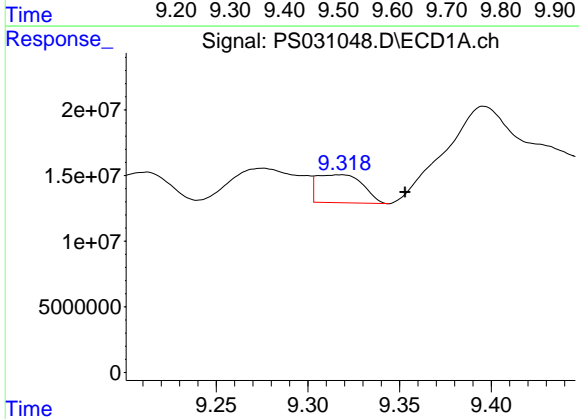
R.T.: 8.784 min
 Delta R.T.: 0.011 min
 Response: 25190540
 Conc: N.D.

Instrument :
 ECD_S
 ClientSampleId :
 PB168825BL



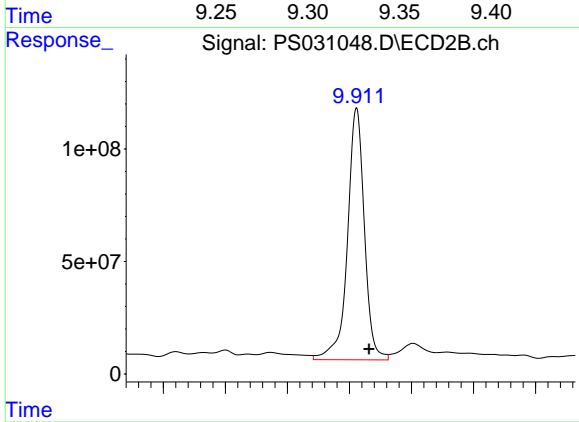
#10 Pentachloropheno1

R.T.: 9.519 min
 Delta R.T.: -0.031 min
 Response: 157736654
 Conc: 4.09 ng/ml



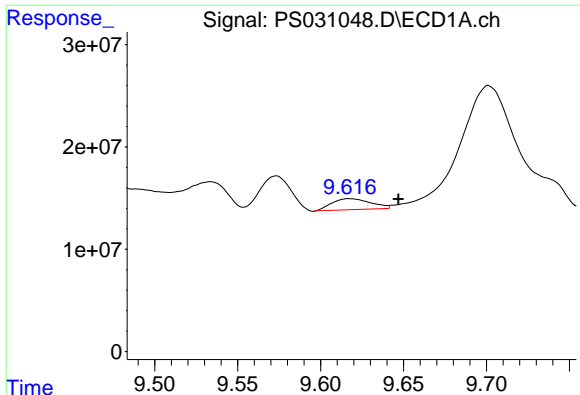
#11 2,4,5-TP (SILVEX)

R.T.: 9.317 min
 Delta R.T.: -0.036 min
 Response: 36990631
 Conc: 1.99 ng/ml



#11 2,4,5-TP (SILVEX)

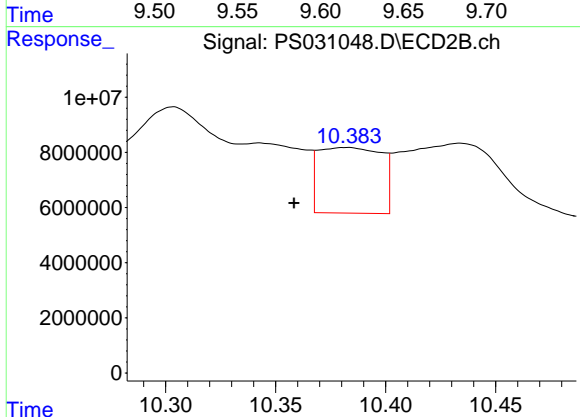
R.T.: 9.911 min
 Delta R.T.: -0.020 min
 Response: 2121757266
 Conc: 144.58 ng/ml



#12 2,4,5-T

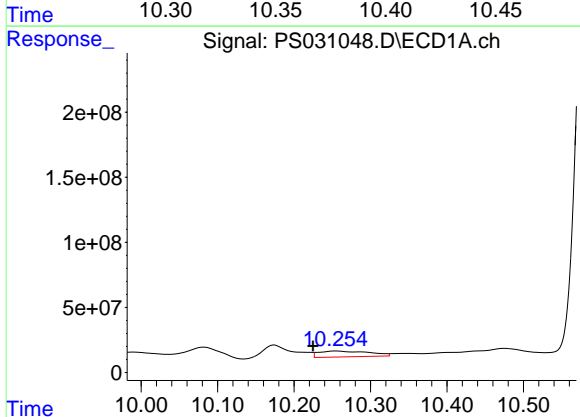
R.T.: 9.618 min
 Delta R.T.: -0.029 min
 Response: 17533660
 Conc: 1.15 ng/ml

Instrument :
 ECD_S
 ClientSampleId :
 PB168825BL



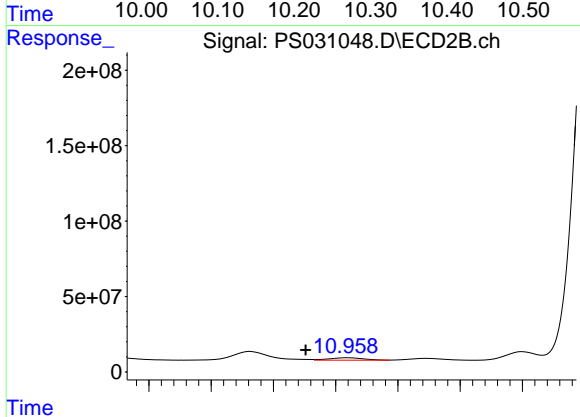
#12 2,4,5-T

R.T.: 10.382 min
 Delta R.T.: 0.024 min
 Response: 47228468
 Conc: 3.38 ng/ml



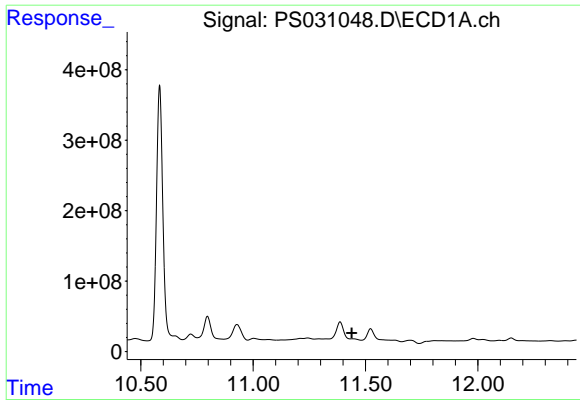
#13 2,4-DB

R.T.: 10.254 min
 Delta R.T.: 0.029 min
 Response: 206559758
 Conc: 95.15 ng/ml



#13 2,4-DB

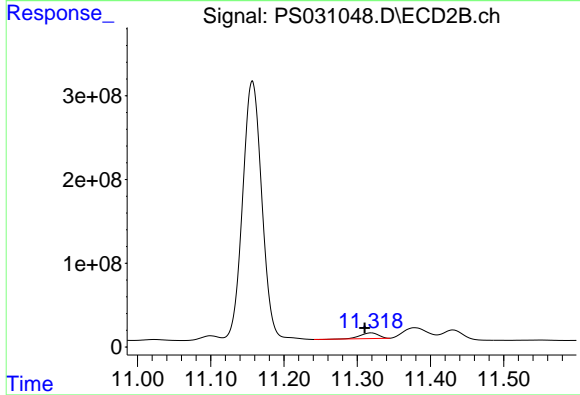
R.T.: 10.959 min
 Delta R.T.: 0.033 min
 Response: 30754942
 Conc: 25.99 ng/ml



#14 DINOSEB

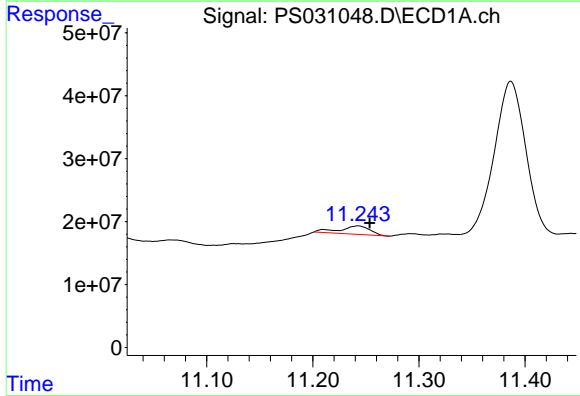
R.T.: 11.444 min
 Delta R.T.: 0.005 min
 Response: -246789833
 Conc: N.D.

Instrument :
 ECD_S
 ClientSampleId :
 PB168825BL



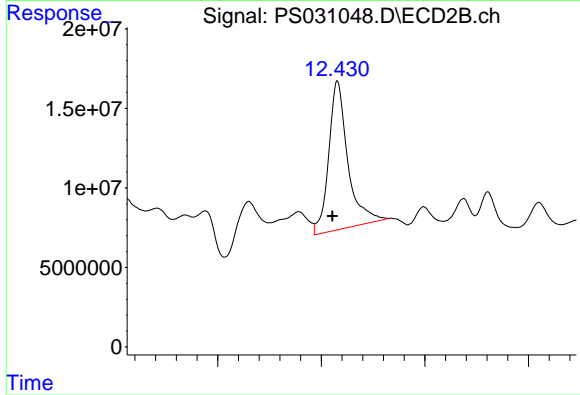
#14 DINOSEB

R.T.: 11.319 min
 Delta R.T.: 0.008 min
 Response: 116974019
 Conc: 10.30 ng/ml



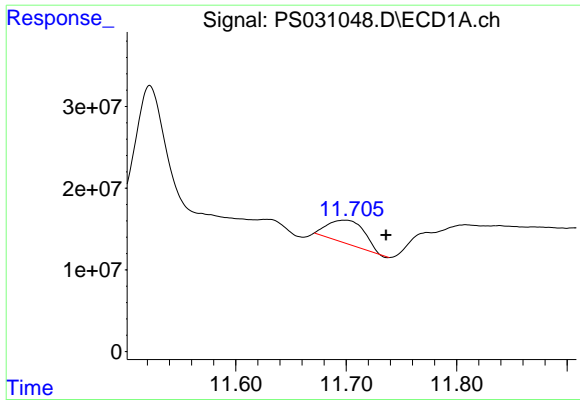
#15 Picloram

R.T.: 11.242 min
 Delta R.T.: -0.011 min
 Response: 26222149
 Conc: 1.80 ng/ml



#15 Picloram

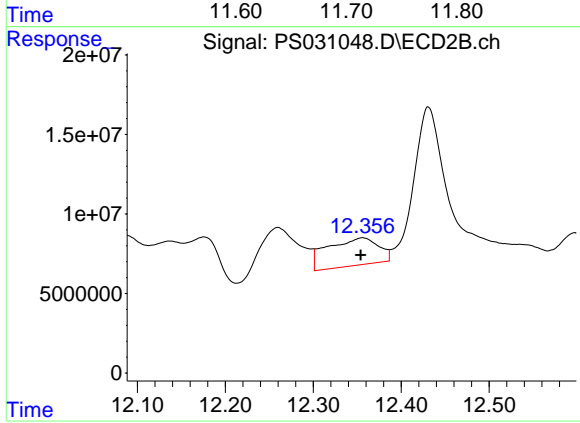
R.T.: 12.431 min
 Delta R.T.: 0.010 min
 Response: 241698995
 Conc: 10.29 ng/ml



#16 DCPA

R.T.: 11.698 min
 Delta R.T.: -0.038 min
 Response: 64867656
 Conc: 2.71 ng/ml

Instrument :
 ECD_S
 ClientSampleId :
 PB168825BL



#16 DCPA

R.T.: 12.356 min
 Delta R.T.: 0.002 min
 Response: 69721999
 Conc: 3.09 ng/ml