

Data Path : Z:\pestpcbsrv\HPCHEM1\ECD_S\Data\PS071525\
 Data File : PS031052.D
 Signal(s) : Signal #1: ECD1A.ch Signal #2: ECD2B.ch
 Acq On : 16 Jul 2025 03:13
 Operator : AR\AJ
 Sample : Q2489-01MS
 Misc :
 ALS Vial : 29 Sample Multiplier: 1

Instrument :
 ECD_S
 ClientSampleId :
 G4(0-6)MS

Integration File signal 1: autoint1.e
 Integration File signal 2: autoint2.e
 Quant Time: Jul 16 03:40:01 2025
 Quant Method : Z:\pestpcbsrv\HPCHEM1\ECD_S\Method\PS071125.M
 Quant Title : 8080.M
 QLast Update : Mon Jul 14 05:51:06 2025
 Response via : Initial Calibration
 Integrator: ChemStation

Volume Inj. : 1 µl
 Signal #1 Phase : ZB-MR1 Signal #2 Phase: ZB-MR2
 Signal #1 Info : 30M x 0.32mm x0.5 Signal #2 Info : 30M x 0.32mm x 0.25µm

Compound	RT#1	RT#2	Resp#1	Resp#2	ng/ml	ng/ml

System Monitoring Compounds						
4) S 2,4-DCAA	7.329	7.767	1626.6E6	396.3E6	411.268	382.556
Target Compounds						
1) T Dalapon	2.688	2.706	2996.0E6	3276.9E6	491.809	1152.683 #
2) T 3,5-DICHL...	6.491	6.713	2218.3E6	568.9E6	423.453	366.935
3) T 4-Nitroph...	7.128	7.300	593.9E6	585.8E6	439.952	335.919
5) T DICAMBA	7.518	7.969	5968.6E6	2292.5E6	380.388	353.979
6) T MCPP	7.697	8.066	330.2E6	66727929	35.885	31.211
7) T MCPA	7.847	8.313	427.3E6	126.3E6	39.177	39.393
8) T DICHLORPROP	8.230	8.688	1526.8E6	559.0E6	448.391	367.937
9) T 2,4-D	8.461	9.025	1731.7E6	801.9E6	562.525	471.847
10) T Pentachlo...	8.768	9.548	23816.6E6	15565.9E6	473.853	403.940
11) T 2,4,5-TP ...	9.347	9.928	9687.9E6	7980.8E6	520.553	543.805
12) T 2,4,5-T	9.642	10.356	7652.1E6	5607.5E6	502.984	400.768
13) T 2,4-DB	10.220	10.923	1259.3E6	465.1E6	580.108	393.122 #
14) T DINOSEB	11.433	11.308	4573.3E6	3505.0E6	346.886	308.767
15) T Picloram	11.243	12.418	6966.9E6	8474.7E6	478.106	360.924
16) T DCPA	11.727	12.351	9290.1E6	8695.2E6	388.105	385.563

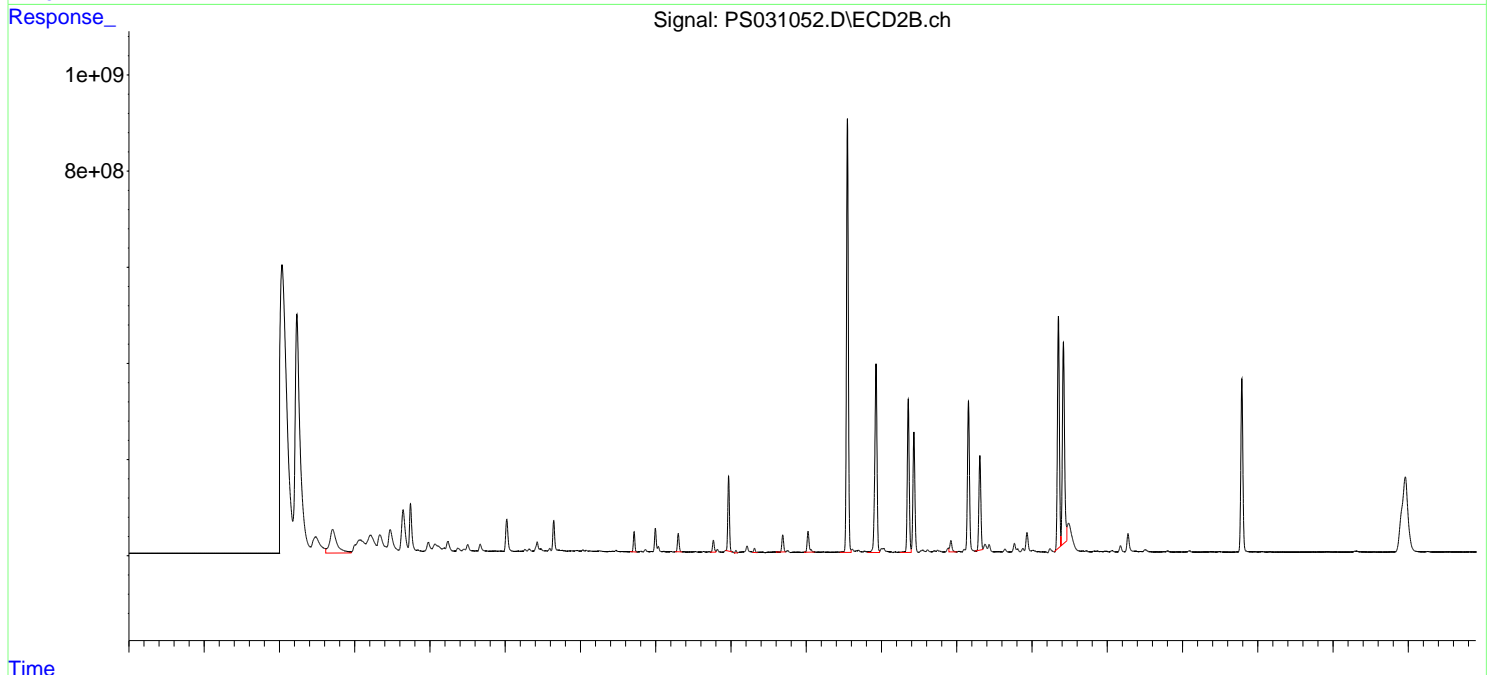
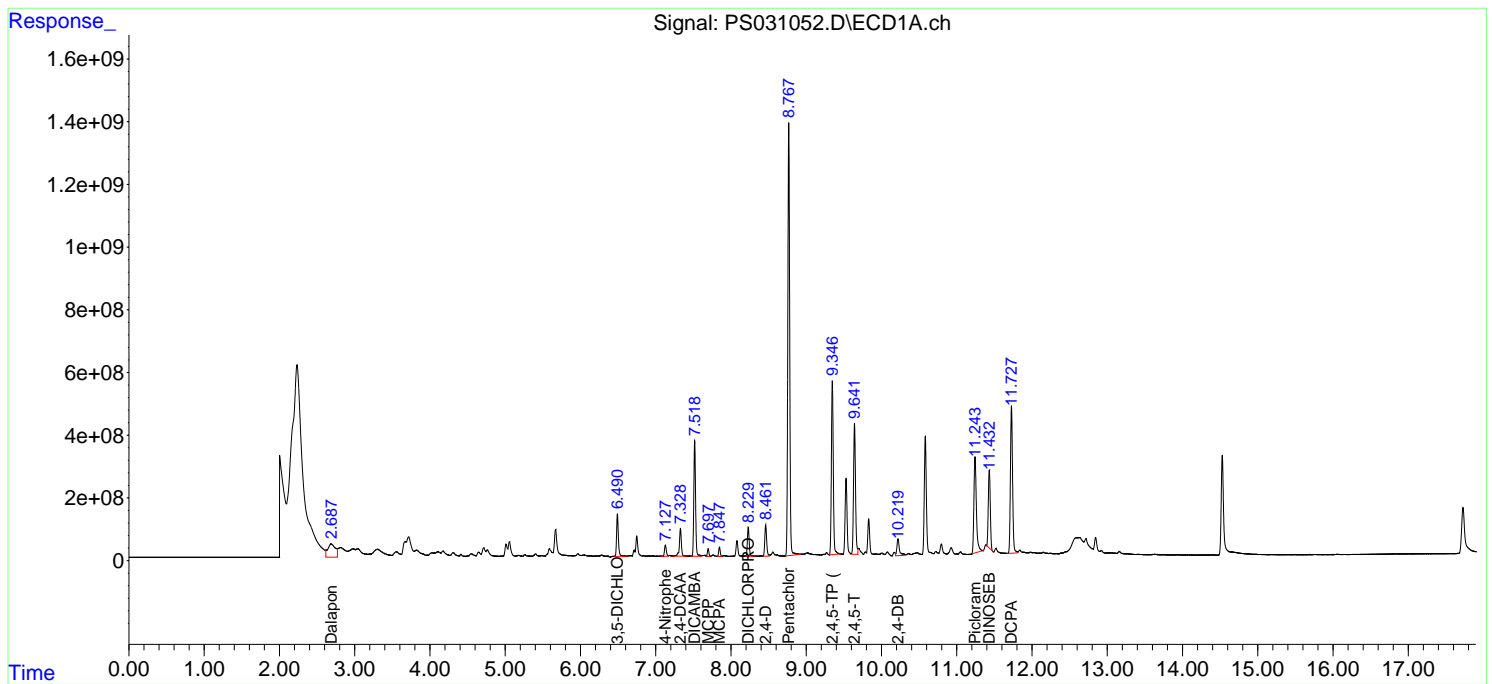
(f)=RT Delta > 1/2 Window (#)=Amounts differ by > 25% (m)=manual int.

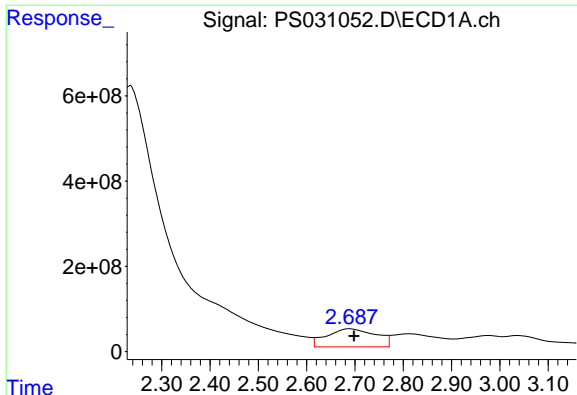
Data Path : Z:\pestpcbsrv\HPCHEM1\ECD_S\Data\PS071525\
 Data File : PS031052.D
 Signal(s) : Signal #1: ECD1A.ch Signal #2: ECD2B.ch
 Acq On : 16 Jul 2025 03:13
 Operator : AR\AJ
 Sample : Q2489-01MS
 Misc :
 ALS Vial : 29 Sample Multiplier: 1

Instrument :
 ECD_S
 ClientSampleId :
 G4(0-6)MS

Integration File signal 1: autoint1.e
 Integration File signal 2: autoint2.e
 Quant Time: Jul 16 03:40:01 2025
 Quant Method : Z:\pestpcbsrv\HPCHEM1\ECD_S\Method\PS071125.M
 Quant Title : 8080.M
 QLast Update : Mon Jul 14 05:51:06 2025
 Response via : Initial Calibration
 Integrator: ChemStation

Volume Inj. : 1 µl
 Signal #1 Phase : ZB-MR1 Signal #2 Phase: ZB-MR2
 Signal #1 Info : 30M x 0.32mm x 0.5 Signal #2 Info : 30M x 0.32mm x 0.25µm

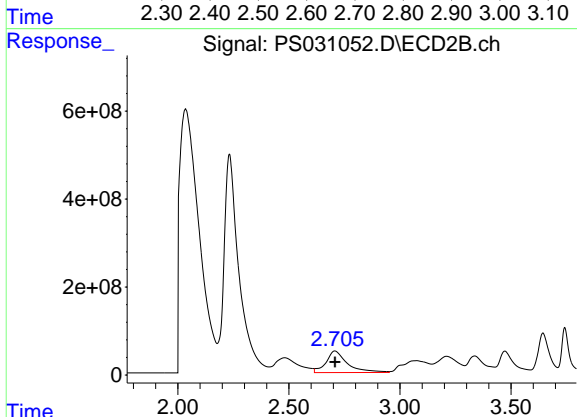




#1 Dalapon

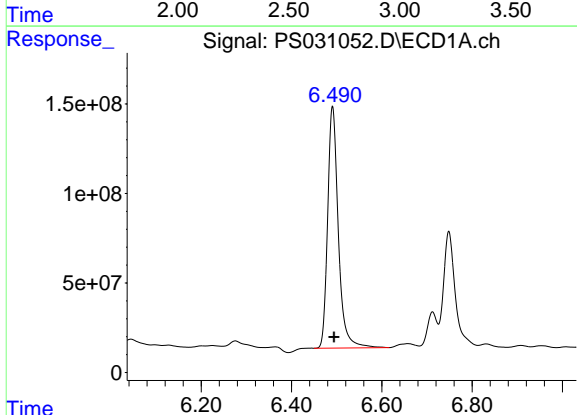
R.T.: 2.688 min
 Delta R.T.: -0.010 min
 Response: 2995967241
 Conc: 491.81 ng/ml

Instrument :
 ECD_S
 ClientSampleId :
 G4(0-6)MS



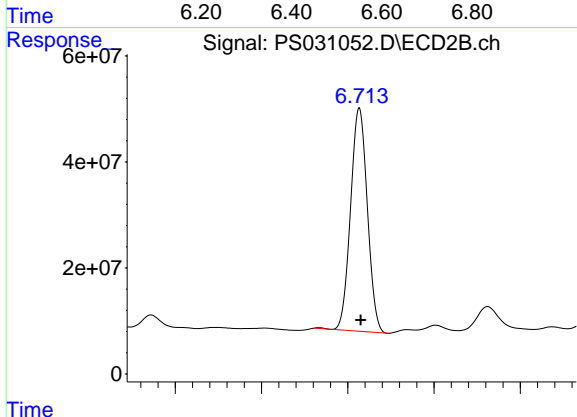
#1 Dalapon

R.T.: 2.706 min
 Delta R.T.: -0.002 min
 Response: 3276915432
 Conc: 1152.68 ng/ml



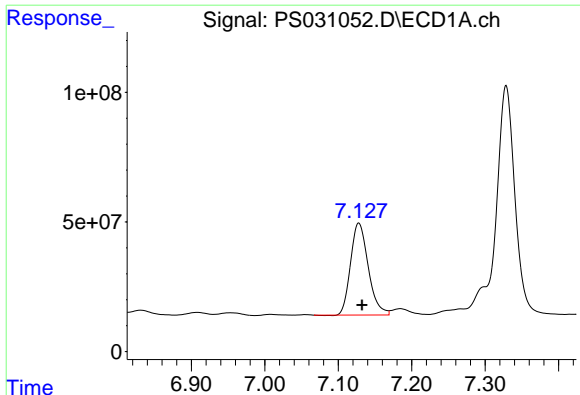
#2 3,5-DICHLOROBENZOIC ACID

R.T.: 6.491 min
 Delta R.T.: -0.003 min
 Response: 2218298614
 Conc: 423.45 ng/ml



#2 3,5-DICHLOROBENZOIC ACID

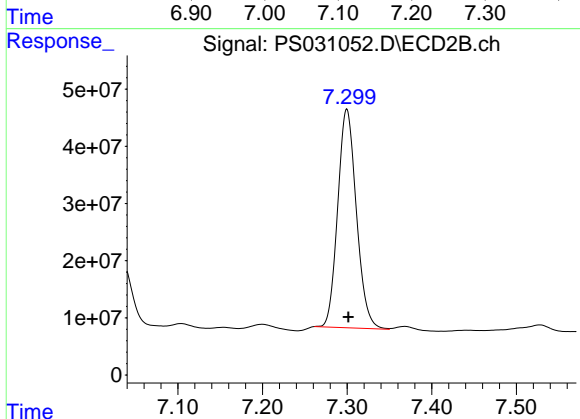
R.T.: 6.713 min
 Delta R.T.: -0.002 min
 Response: 568873567
 Conc: 366.94 ng/ml



#3 4-Nitrophenol

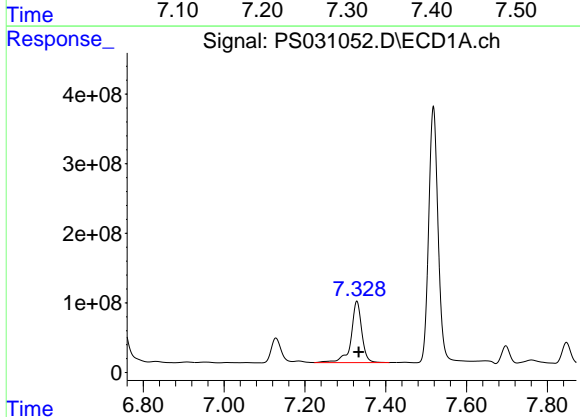
R.T.: 7.128 min
 Delta R.T.: -0.004 min
 Response: 593938656
 Conc: 439.95 ng/ml

Instrument :
 ECD_S
 ClientSampleId :
 G4(0-6)MS



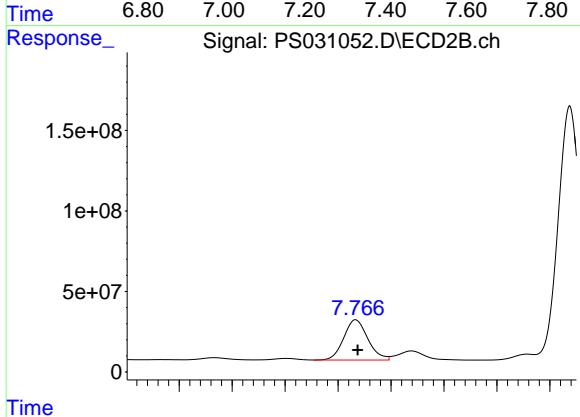
#3 4-Nitrophenol

R.T.: 7.300 min
 Delta R.T.: -0.002 min
 Response: 585804691
 Conc: 335.92 ng/ml



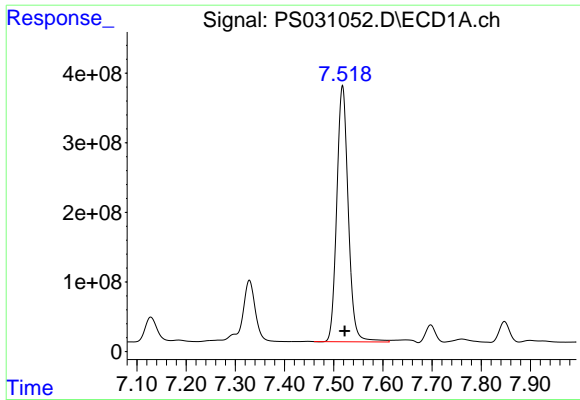
#4 2,4-DCAA

R.T.: 7.329 min
 Delta R.T.: -0.004 min
 Response: 1626596273
 Conc: 411.27 ng/ml



#4 2,4-DCAA

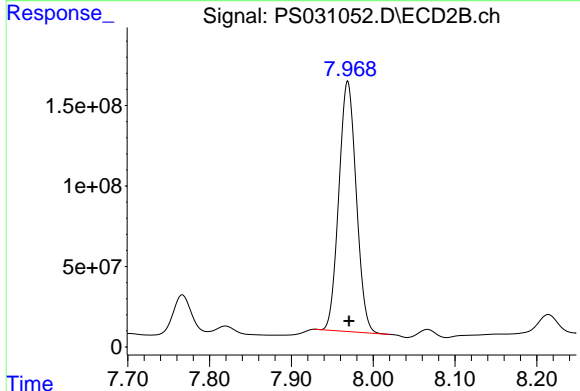
R.T.: 7.767 min
 Delta R.T.: -0.002 min
 Response: 396340252
 Conc: 382.56 ng/ml



#5 DICAMBA

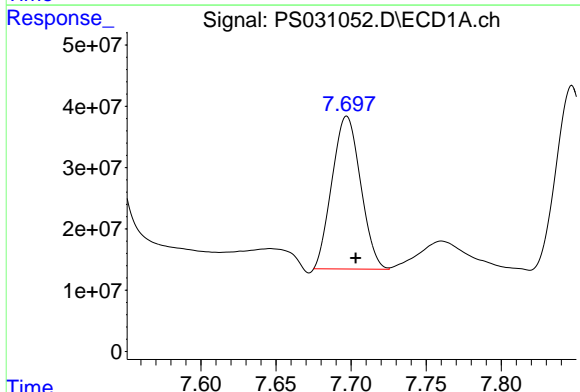
R.T.: 7.518 min
 Delta R.T.: -0.004 min
 Response: 5968642114
 Conc: 380.39 ng/ml

Instrument :
 ECD_S
 ClientSampleId :
 G4(0-6)MS



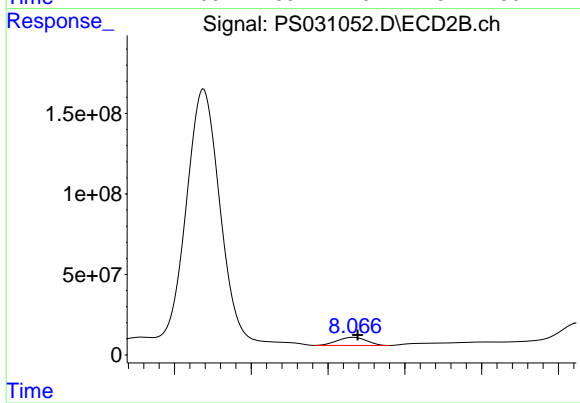
#5 DICAMBA

R.T.: 7.969 min
 Delta R.T.: -0.002 min
 Response: 2292516685
 Conc: 353.98 ng/ml



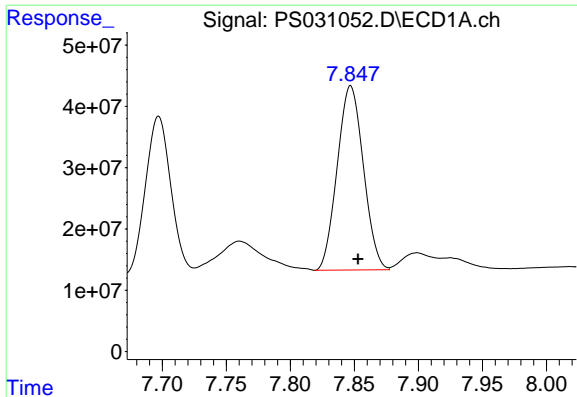
#6 MCP

R.T.: 7.697 min
 Delta R.T.: -0.006 min
 Response: 330191011
 Conc: 35.89 ug/ml



#6 MCP

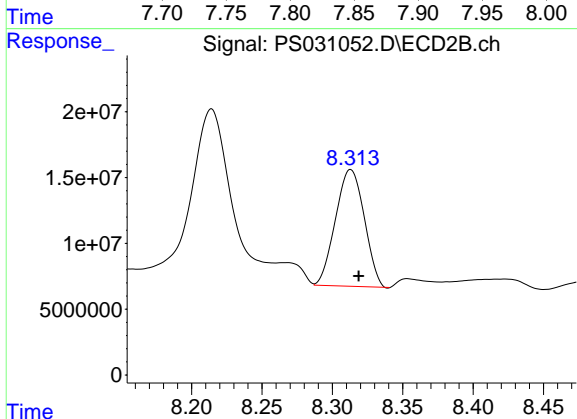
R.T.: 8.066 min
 Delta R.T.: -0.003 min
 Response: 66727929
 Conc: 31.21 ug/ml



#7 MCPA

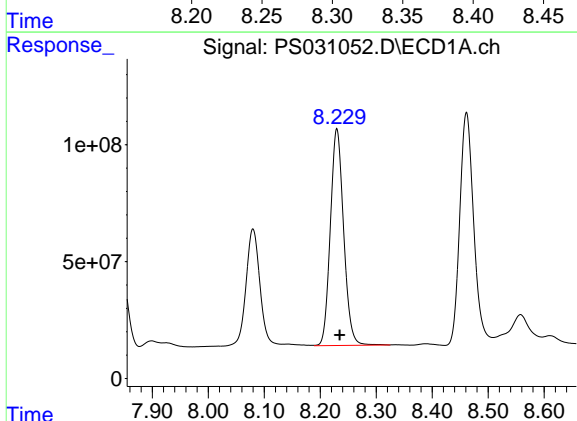
R.T.: 7.847 min
 Delta R.T.: -0.006 min
 Response: 427295357
 Conc: 39.18 ug/ml

Instrument :
 ECD_S
 ClientSampleId :
 G4(0-6)MS



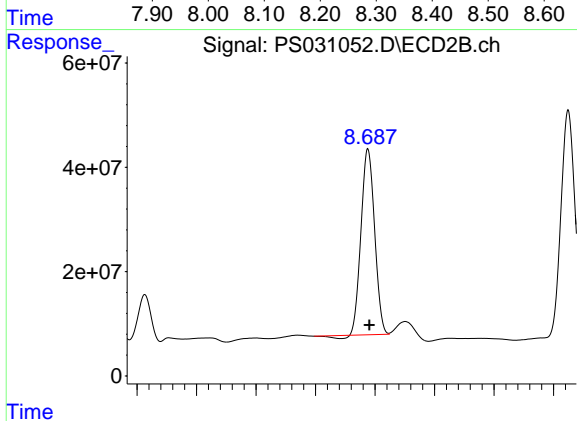
#7 MCPA

R.T.: 8.313 min
 Delta R.T.: -0.006 min
 Response: 126280549
 Conc: 39.39 ug/ml



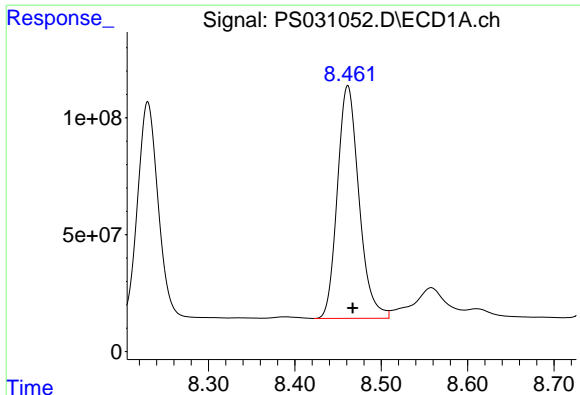
#8 DICHLORPROP

R.T.: 8.230 min
 Delta R.T.: -0.005 min
 Response: 1526840343
 Conc: 448.39 ng/ml



#8 DICHLORPROP

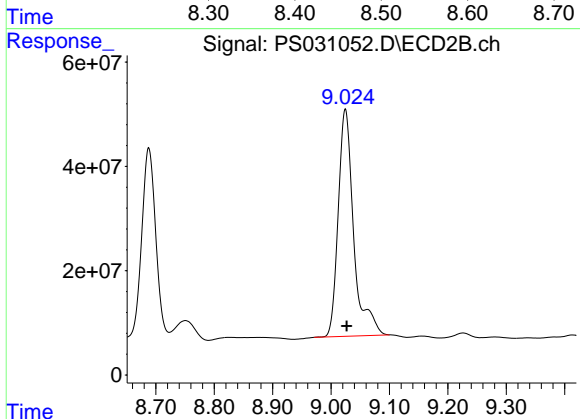
R.T.: 8.688 min
 Delta R.T.: -0.002 min
 Response: 558992489
 Conc: 367.94 ng/ml



#9 2,4-D

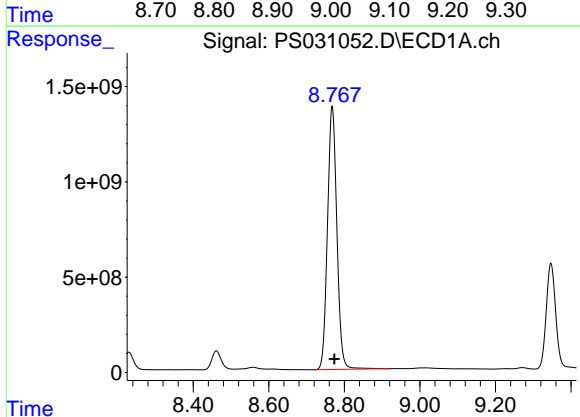
R.T.: 8.461 min
 Delta R.T.: -0.006 min
 Response: 1731697899
 Conc: 562.53 ng/ml

Instrument :
 ECD_S
 ClientSampleId :
 G4(0-6)MS



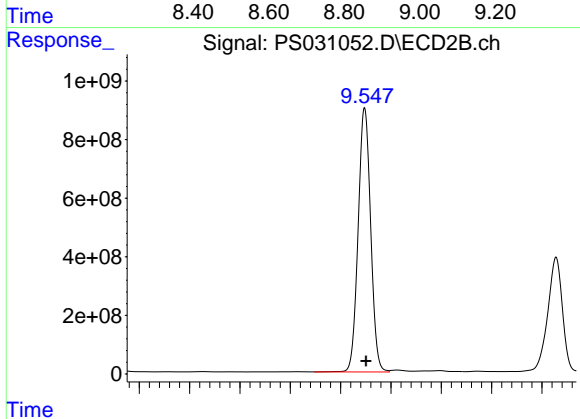
#9 2,4-D

R.T.: 9.025 min
 Delta R.T.: -0.002 min
 Response: 801886824
 Conc: 471.85 ng/ml



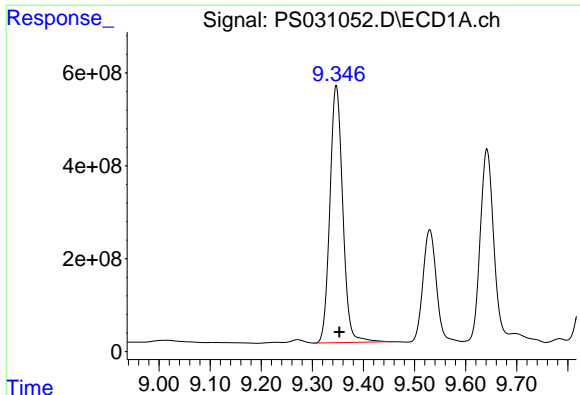
#10 Pentachlorophenol

R.T.: 8.768 min
 Delta R.T.: -0.005 min
 Response: 23816606169
 Conc: 473.85 ng/ml



#10 Pentachlorophenol

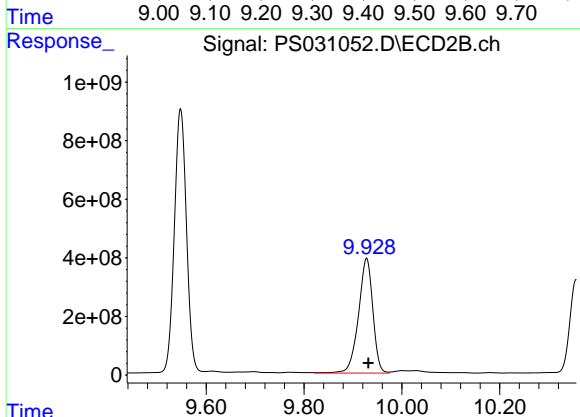
R.T.: 9.548 min
 Delta R.T.: -0.003 min
 Response: 15565852747
 Conc: 403.94 ng/ml



#11 2,4,5-TP (SILVEX)

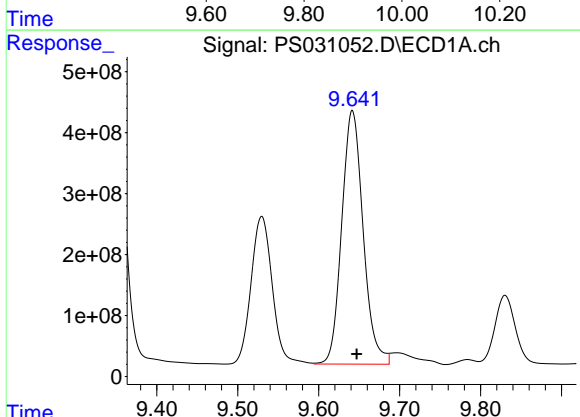
R.T.: 9.347 min
 Delta R.T.: -0.006 min
 Response: 9687871732
 Conc: 520.55 ng/ml

Instrument :
 ECD_S
 ClientSampleId :
 G4(0-6)MS



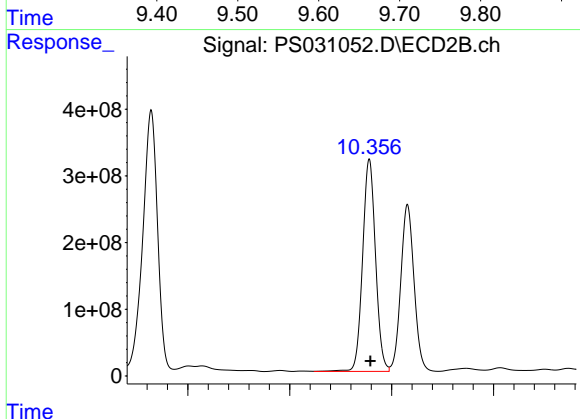
#11 2,4,5-TP (SILVEX)

R.T.: 9.928 min
 Delta R.T.: -0.004 min
 Response: 7980760877
 Conc: 543.81 ng/ml



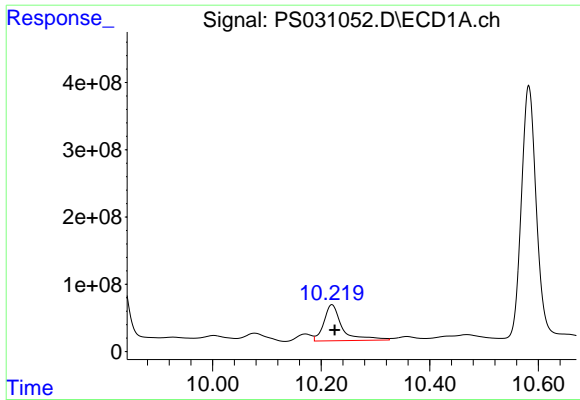
#12 2,4,5-T

R.T.: 9.642 min
 Delta R.T.: -0.005 min
 Response: 7652055604
 Conc: 502.98 ng/ml



#12 2,4,5-T

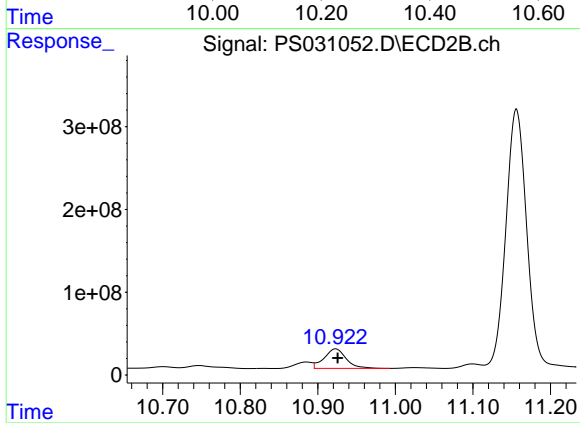
R.T.: 10.356 min
 Delta R.T.: -0.002 min
 Response: 5607468048
 Conc: 400.77 ng/ml



#13 2,4-DB

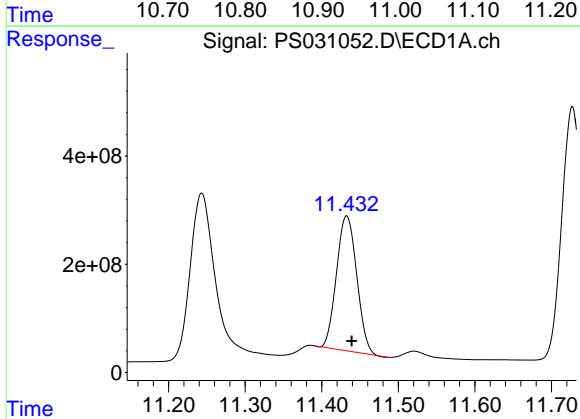
R.T.: 10.220 min
 Delta R.T.: -0.005 min
 Response: 1259292086
 Conc: 580.11 ng/ml

Instrument :
 ECD_S
 ClientSampleId :
 G4(0-6)MS



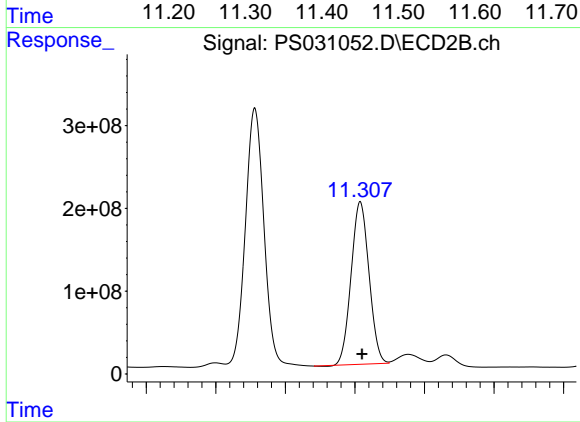
#13 2,4-DB

R.T.: 10.923 min
 Delta R.T.: -0.003 min
 Response: 465135139
 Conc: 393.12 ng/ml



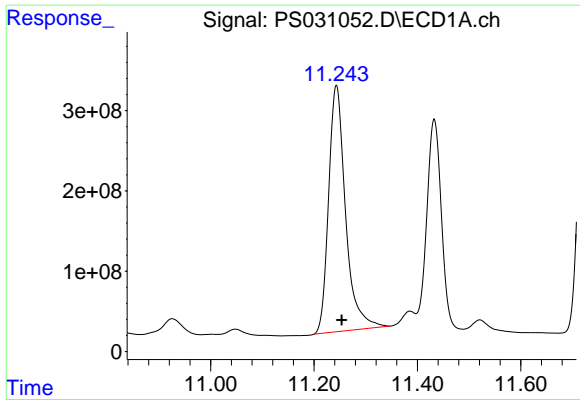
#14 DINOSEB

R.T.: 11.433 min
 Delta R.T.: -0.007 min
 Response: 4573312672
 Conc: 346.89 ng/ml



#14 DINOSEB

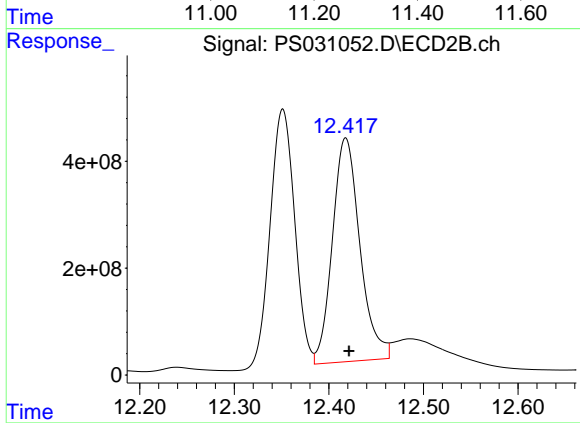
R.T.: 11.308 min
 Delta R.T.: -0.003 min
 Response: 3504972563
 Conc: 308.77 ng/ml



#15 Picloram

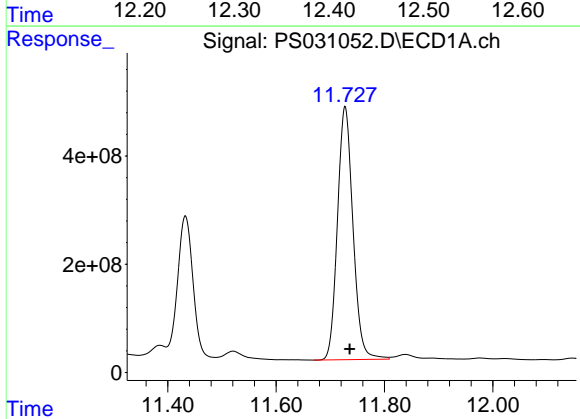
R.T.: 11.243 min
 Delta R.T.: -0.010 min
 Response: 6966938253
 Conc: 478.11 ng/ml

Instrument :
 ECD_S
 ClientSampleId :
 G4(0-6)MS



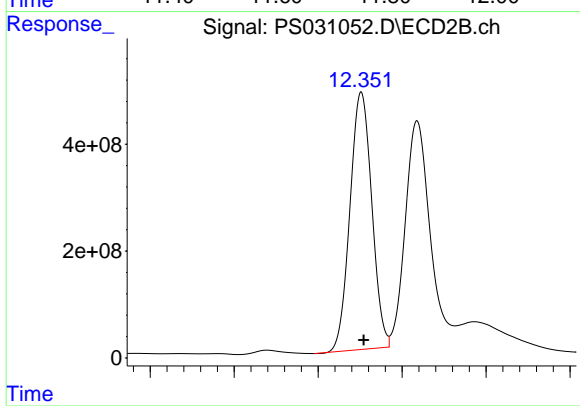
#15 Picloram

R.T.: 12.418 min
 Delta R.T.: -0.003 min
 Response: 8474731246
 Conc: 360.92 ng/ml



#16 DCPA

R.T.: 11.727 min
 Delta R.T.: -0.009 min
 Response: 9290141545
 Conc: 388.11 ng/ml



#16 DCPA

R.T.: 12.351 min
 Delta R.T.: -0.003 min
 Response: 8695208893
 Conc: 385.56 ng/ml