

Data Path : Z:\pestpcbsrv\HPCHEM1\ECD_S\Data\PS071525\
 Data File : PS031053.D
 Signal(s) : Signal #1: ECD1A.ch Signal #2: ECD2B.ch
 Acq On : 16 Jul 2025 03:37
 Operator : AR\AJ
 Sample : Q2489-01MSD
 Misc :
 ALS Vial : 30 Sample Multiplier: 1

Instrument :
 ECD_S
 ClientSampleId :
 G4(0-6)MSD

Integration File signal 1: autoint1.e
 Integration File signal 2: autoint2.e
 Quant Time: Jul 16 06:46:26 2025
 Quant Method : Z:\pestpcbsrv\HPCHEM1\ECD_S\Method\PS071125.M
 Quant Title : 8080.M
 QLast Update : Mon Jul 14 05:51:06 2025
 Response via : Initial Calibration
 Integrator: ChemStation

Volume Inj. : 1 µl
 Signal #1 Phase : ZB-MR1 Signal #2 Phase: ZB-MR2
 Signal #1 Info : 30M x 0.32mm x0.5 Signal #2 Info : 30M x 0.32mm x 0.25µm

Compound	RT#1	RT#2	Resp#1	Resp#2	ng/ml	ng/ml

System Monitoring Compounds						
4) S 2,4-DCAA	7.329	7.767	1924.5E6	474.6E6	486.580	458.116
Target Compounds						
1) T Dalapon	2.688	2.706	3590.9E6	3637.9E6	589.476	1279.656 #
2) T 3,5-DICHL...	6.491	6.714	2690.8E6	695.4E6	513.643	448.564
3) T 4-Nitroph...	7.128	7.300	720.5E6	719.4E6	533.732	412.512
5) T DICAMBA	7.518	7.970	7194.1E6	2791.5E6	458.488	431.033
6) T MCPP	7.698	8.068	414.9E6	82720693	45.088	38.692
7) T MCPA	7.848	8.315	531.0E6	154.8E6	48.682	48.305
8) T DICHLORPROP	8.230	8.689	1819.6E6	662.3E6	534.364	435.958
9) T 2,4-D	8.462	9.025	2062.2E6	957.4E6	669.874	563.358
10) T Pentachlo...	8.768	9.549	28686.6E6	18844.5E6	570.745	489.021
11) T 2,4,5-TP ...	9.347	9.929	11625.8E6	8837.0E6	624.683	602.147
12) T 2,4,5-T	9.642	10.356	9295.1E6	6722.5E6	610.982	480.460
13) T 2,4-DB	10.220	10.924	1520.0E6	663.7E6	700.187	560.918
14) T DINOSEB	11.433	11.308	5623.4E6	4387.2E6	426.537	386.489
15) T Picloram	11.245	12.418	8468.1E6	10037.5E6	581.121	427.479 #
16) T DCPA	11.728	12.352	10926.8E6	10137.1E6	456.479	449.500

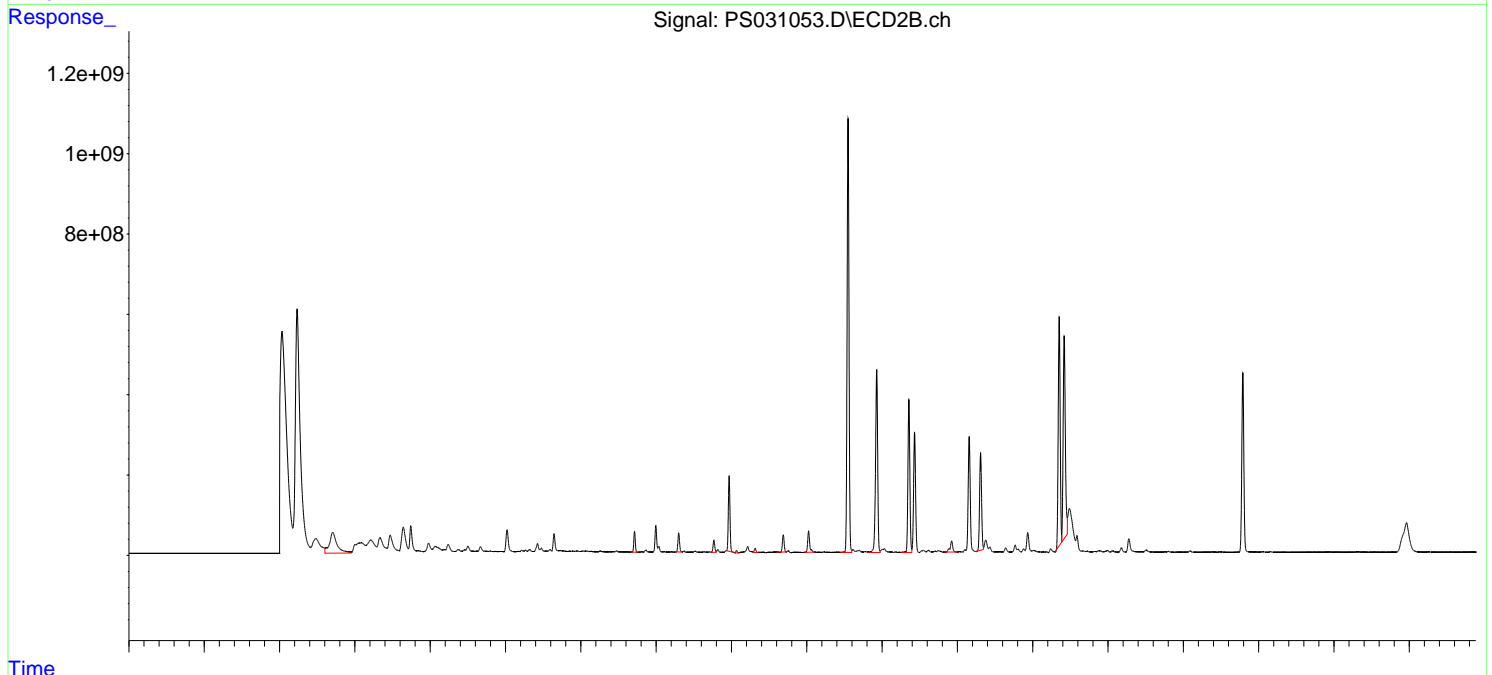
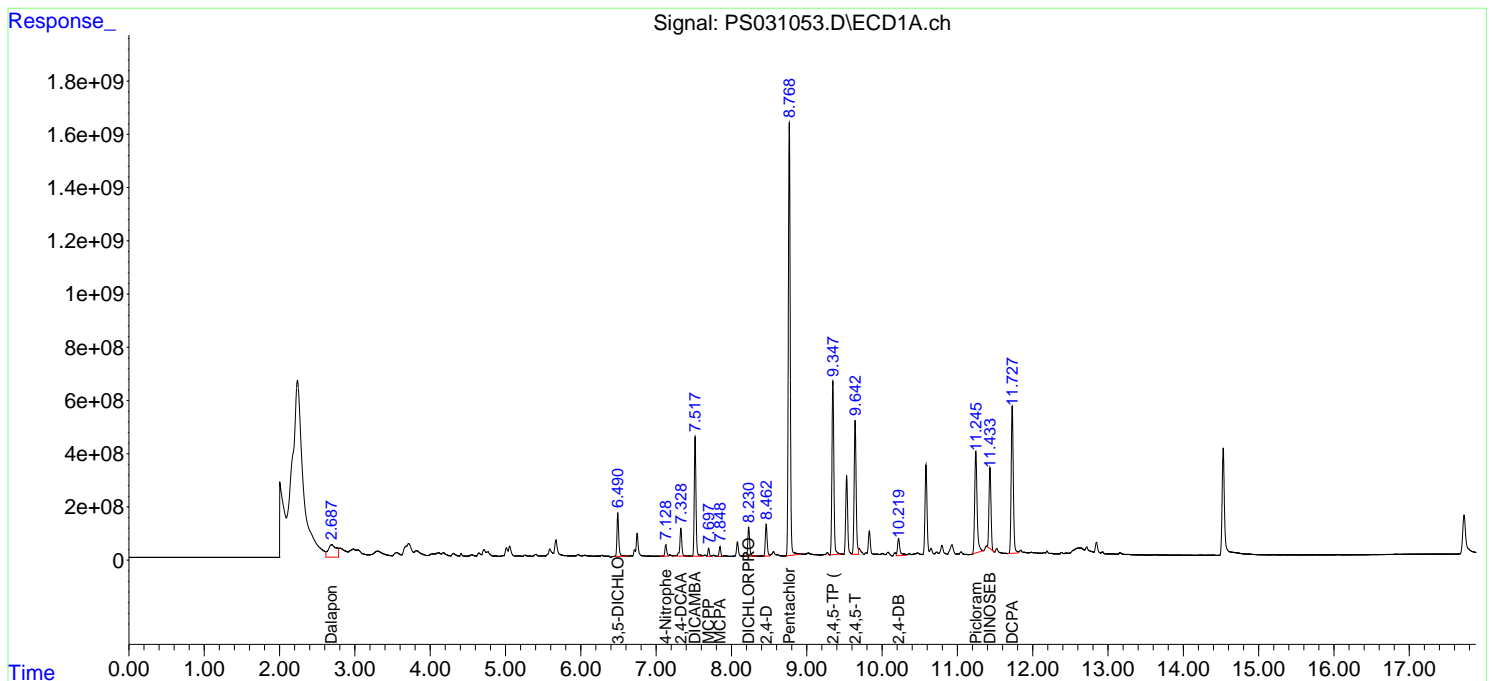
(f)=RT Delta > 1/2 Window (#)=Amounts differ by > 25% (m)=manual int.

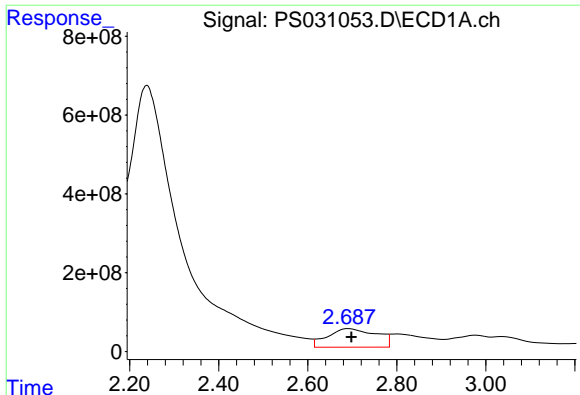
Data Path : Z:\pestpcbsrv\HPCHEM1\ECD_S\Data\PS071525\
 Data File : PS031053.D
 Signal(s) : Signal #1: ECD1A.ch Signal #2: ECD2B.ch
 Acq On : 16 Jul 2025 03:37
 Operator : AR\AJ
 Sample : Q2489-01MSD
 Misc :
 ALS Vial : 30 Sample Multiplier: 1

Instrument :
 ECD_S
 ClientSampleId :
 G4(0-6)MSD

Integration File signal 1: autoint1.e
 Integration File signal 2: autoint2.e
 Quant Time: Jul 16 06:46:26 2025
 Quant Method : Z:\pestpcbsrv\HPCHEM1\ECD_S\Method\PS071125.M
 Quant Title : 8080.M
 QLast Update : Mon Jul 14 05:51:06 2025
 Response via : Initial Calibration
 Integrator: ChemStation

Volume Inj. : 1 µl
 Signal #1 Phase : ZB-MR1 Signal #2 Phase: ZB-MR2
 Signal #1 Info : 30M x 0.32mm x 0.5 Signal #2 Info : 30M x 0.32mm x 0.25µm

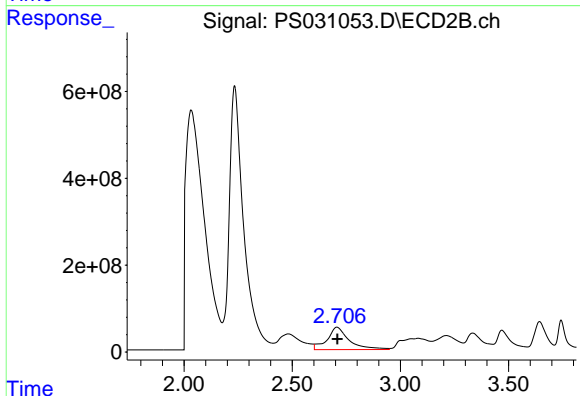




#1 Dalapon

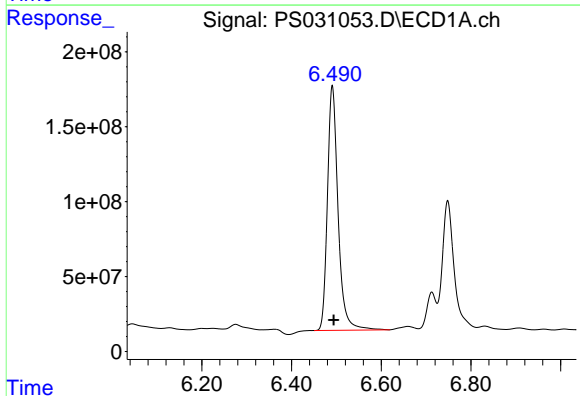
R.T.: 2.688 min
 Delta R.T.: -0.010 min
 Response: 3590925525
 Conc: 589.48 ng/ml

Instrument :
 ECD_S
 ClientSampleId :
 G4(0-6)MSD



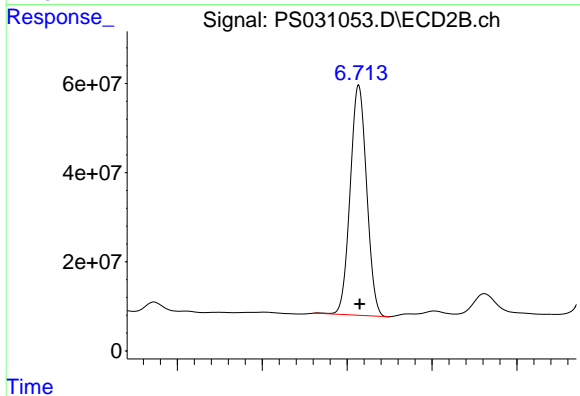
#1 Dalapon

R.T.: 2.706 min
 Delta R.T.: -0.002 min
 Response: 3637881054
 Conc: 1279.66 ng/ml



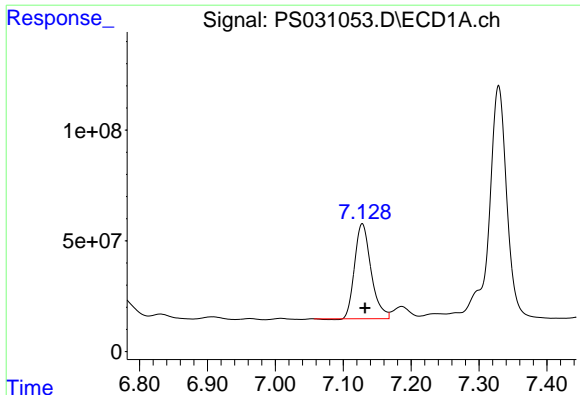
#2 3,5-DICHLOROBENZOIC ACID

R.T.: 6.491 min
 Delta R.T.: -0.003 min
 Response: 2690772531
 Conc: 513.64 ng/ml



#2 3,5-DICHLOROBENZOIC ACID

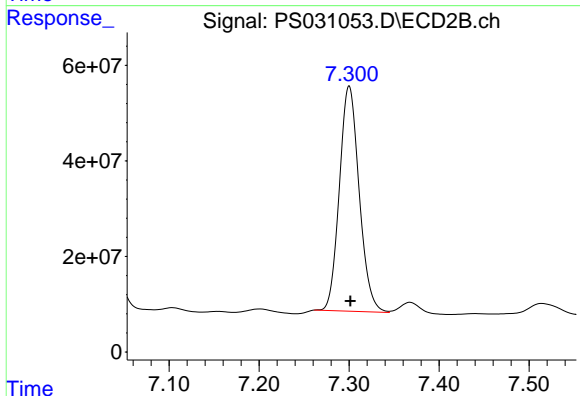
R.T.: 6.714 min
 Delta R.T.: -0.001 min
 Response: 695425771
 Conc: 448.56 ng/ml



#3 4-Nitrophenol

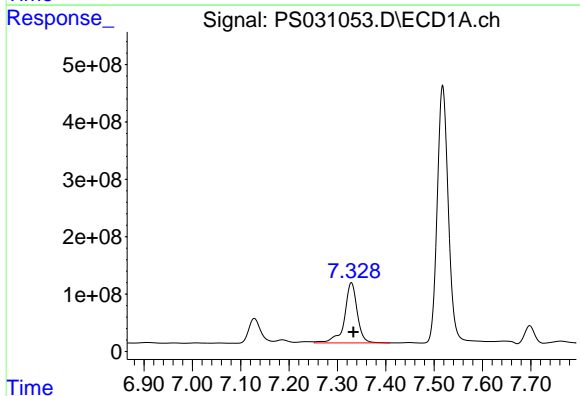
R.T.: 7.128 min
 Delta R.T.: -0.004 min
 Response: 720542776
 Conc: 533.73 ng/ml

Instrument :
 ECD_S
 ClientSampleId :
 G4(0-6)MSD



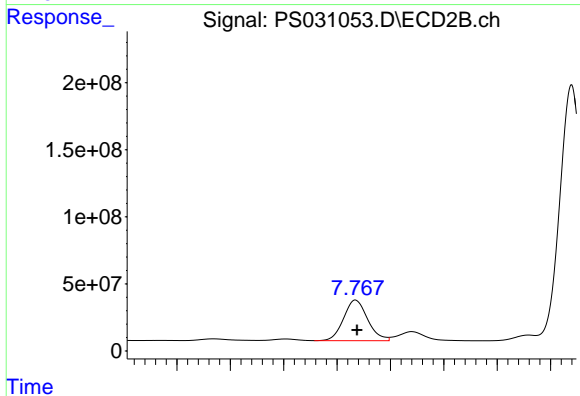
#3 4-Nitrophenol

R.T.: 7.300 min
 Delta R.T.: -0.001 min
 Response: 719374773
 Conc: 412.51 ng/ml



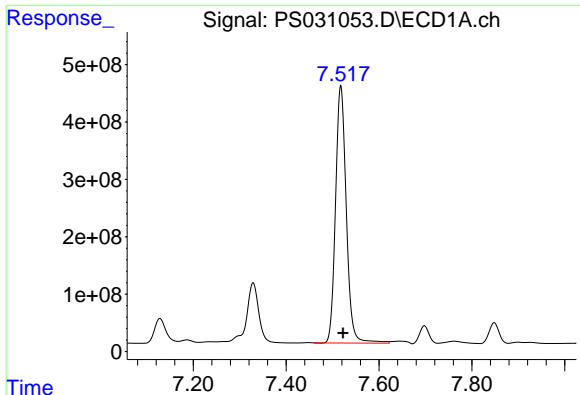
#4 2,4-DCAA

R.T.: 7.329 min
 Delta R.T.: -0.004 min
 Response: 1924460995
 Conc: 486.58 ng/ml



#4 2,4-DCAA

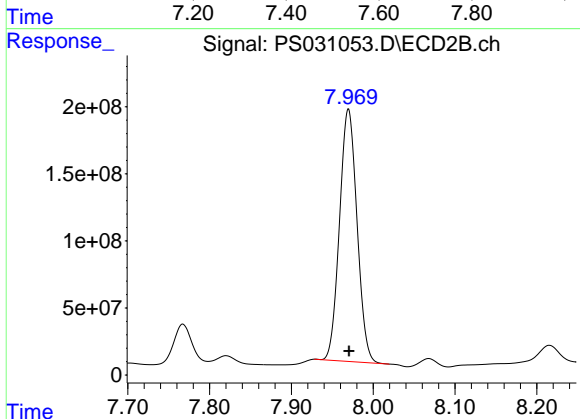
R.T.: 7.767 min
 Delta R.T.: -0.001 min
 Response: 474623568
 Conc: 458.12 ng/ml



#5 DICAMBA

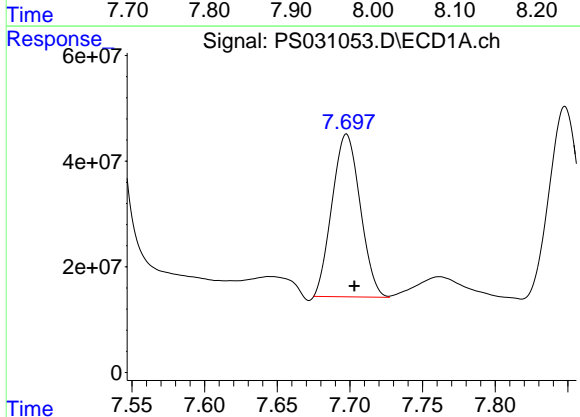
R.T.: 7.518 min
 Delta R.T.: -0.005 min
 Response: 7194089927
 Conc: 458.49 ng/ml

Instrument :
 ECD_S
 ClientSampleId :
 G4(0-6)MSD



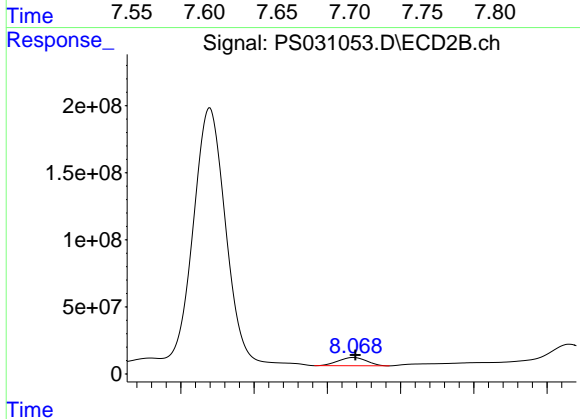
#5 DICAMBA

R.T.: 7.970 min
 Delta R.T.: 0.000 min
 Response: 2791549182
 Conc: 431.03 ng/ml



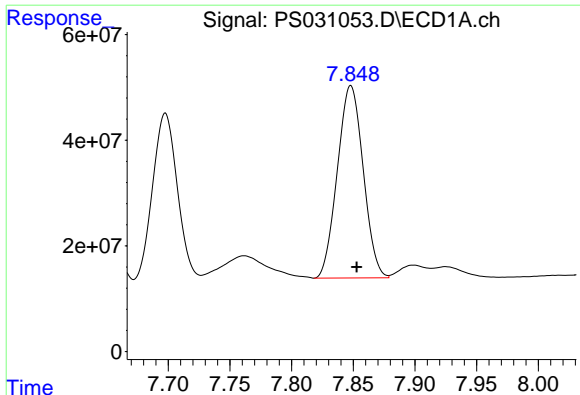
#6 MCP

R.T.: 7.698 min
 Delta R.T.: -0.005 min
 Response: 414864357
 Conc: 45.09 ug/ml



#6 MCP

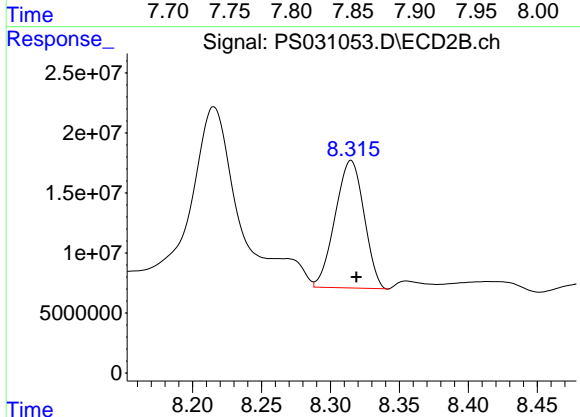
R.T.: 8.068 min
 Delta R.T.: -0.002 min
 Response: 82720693
 Conc: 38.69 ug/ml



#7 MCPA

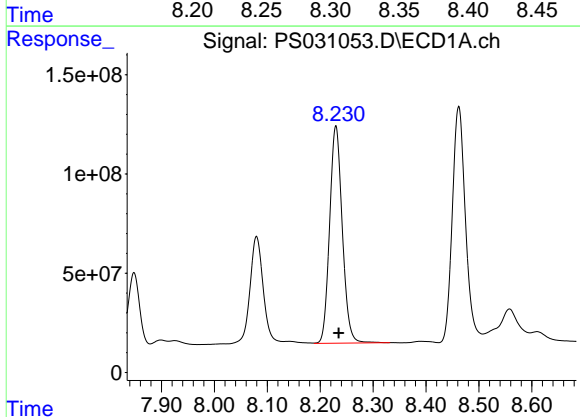
R.T.: 7.848 min
 Delta R.T.: -0.005 min
 Response: 530966663
 Conc: 48.68 ug/ml

Instrument :
 ECD_S
 ClientSampleId :
 G4(0-6)MSD



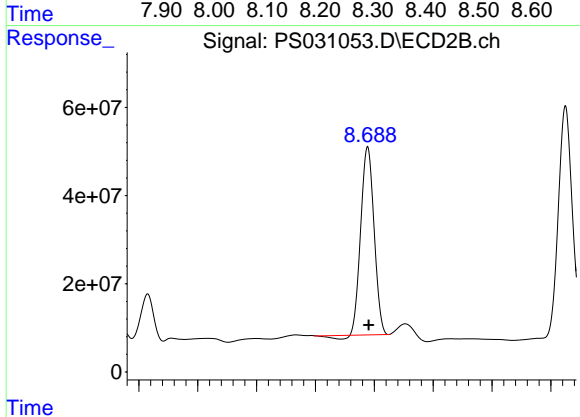
#7 MCPA

R.T.: 8.315 min
 Delta R.T.: -0.004 min
 Response: 154849314
 Conc: 48.30 ug/ml



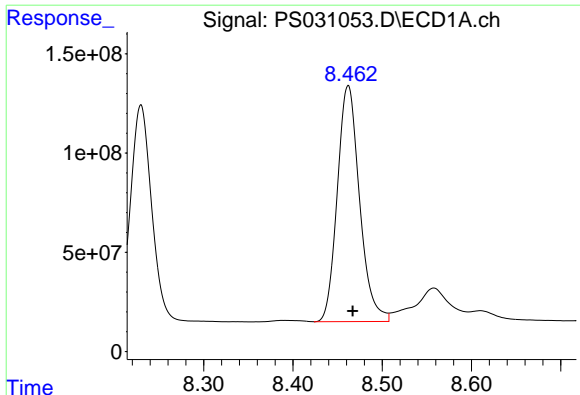
#8 DICHLORPROP

R.T.: 8.230 min
 Delta R.T.: -0.005 min
 Response: 1819590778
 Conc: 534.36 ng/ml



#8 DICHLORPROP

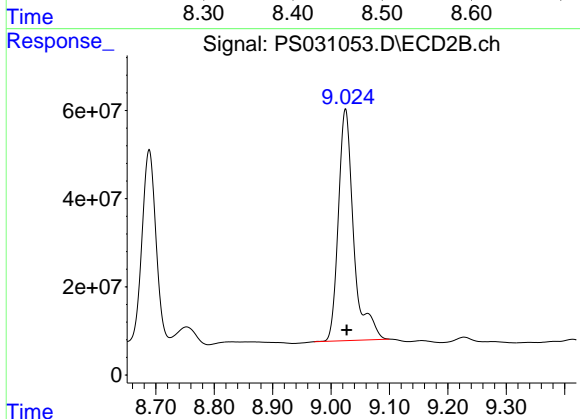
R.T.: 8.689 min
 Delta R.T.: -0.002 min
 Response: 662333666
 Conc: 435.96 ng/ml



#9 2,4-D

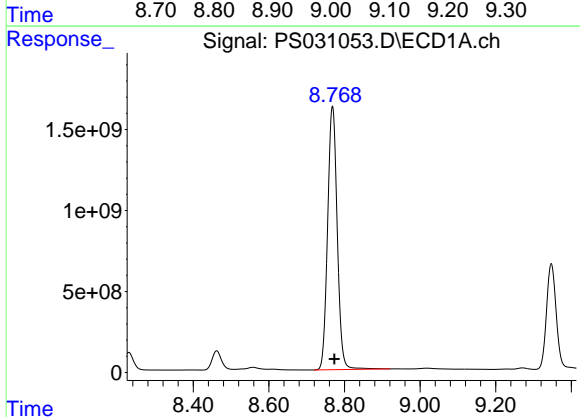
R.T.: 8.462 min
 Delta R.T.: -0.005 min
 Response: 2062162934
 Conc: 669.87 ng/ml

Instrument :
 ECD_S
 ClientSampleId :
 G4(0-6)MSD



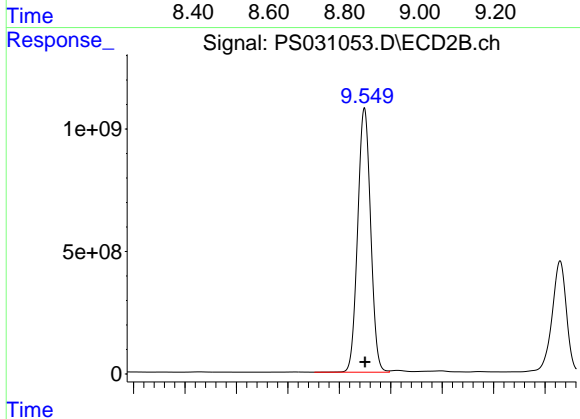
#9 2,4-D

R.T.: 9.025 min
 Delta R.T.: -0.002 min
 Response: 957406553
 Conc: 563.36 ng/ml



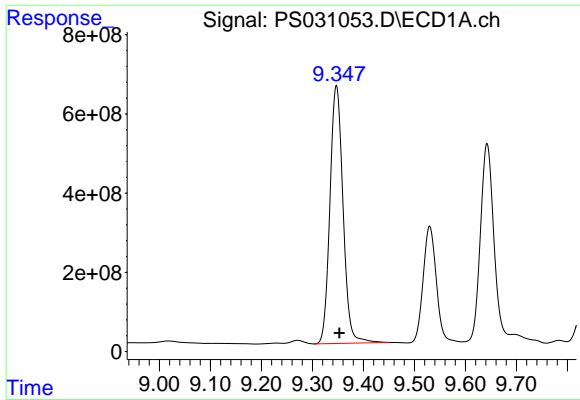
#10 Pentachlorophenol

R.T.: 8.768 min
 Delta R.T.: -0.005 min
 Response: 28686561202
 Conc: 570.75 ng/ml



#10 Pentachlorophenol

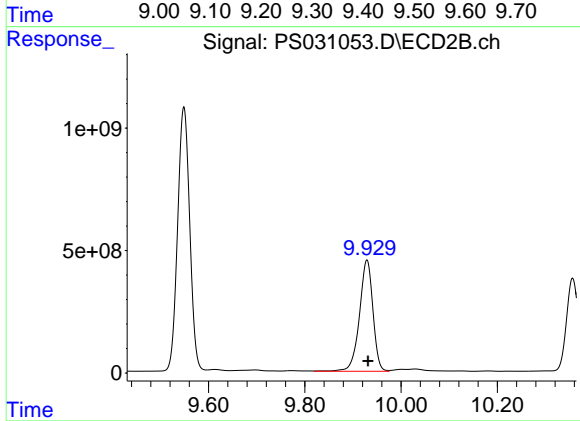
R.T.: 9.549 min
 Delta R.T.: -0.001 min
 Response: 18844462286
 Conc: 489.02 ng/ml



#11 2,4,5-TP (SILVEX)

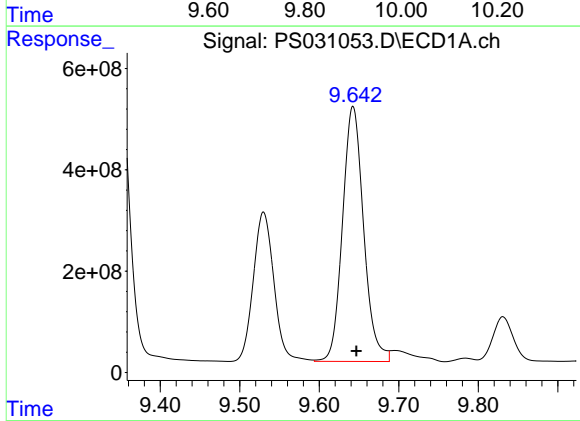
R.T.: 9.347 min
 Delta R.T.: -0.006 min
 Response: 11625817202
 Conc: 624.68 ng/ml

Instrument :
 ECD_S
 ClientSampleId :
 G4(0-6)MSD



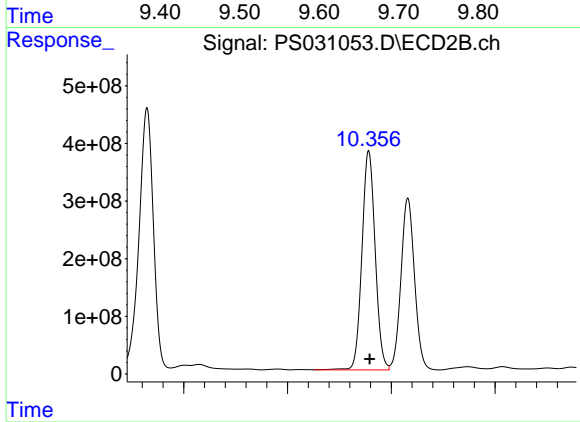
#11 2,4,5-TP (SILVEX)

R.T.: 9.929 min
 Delta R.T.: -0.003 min
 Response: 8836979716
 Conc: 602.15 ng/ml



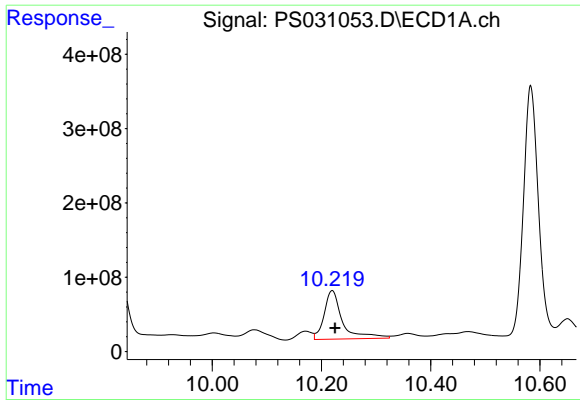
#12 2,4,5-T

R.T.: 9.642 min
 Delta R.T.: -0.004 min
 Response: 9295064232
 Conc: 610.98 ng/ml



#12 2,4,5-T

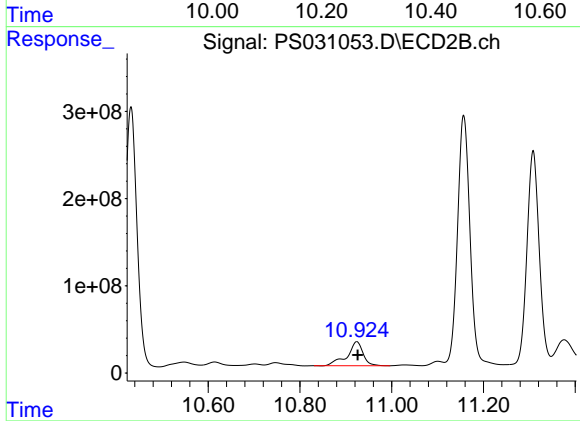
R.T.: 10.356 min
 Delta R.T.: -0.002 min
 Response: 6722505783
 Conc: 480.46 ng/ml



#13 2,4-DB

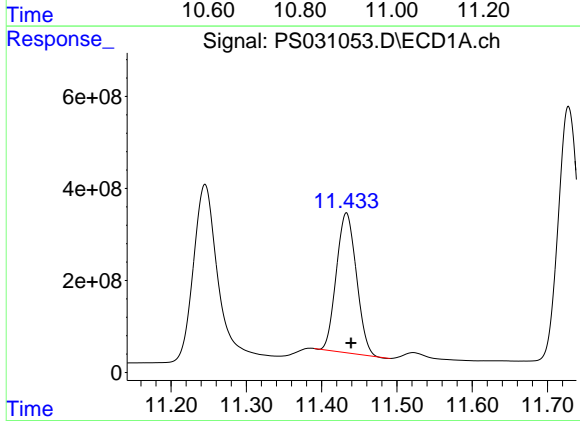
R.T.: 10.220 min
 Delta R.T.: -0.005 min
 Response: 1519957755
 Conc: 700.19 ng/ml

Instrument :
 ECD_S
 ClientSampleId :
 G4(0-6)MSD



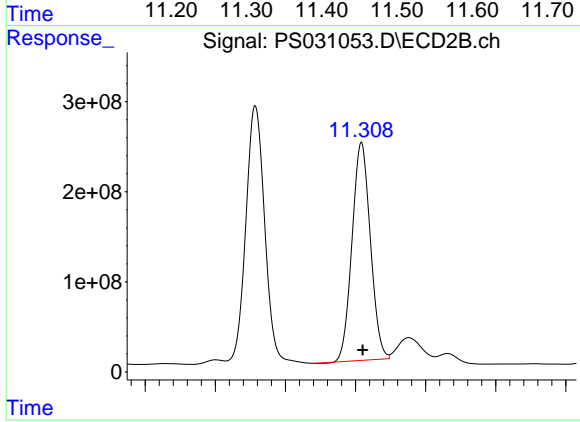
#13 2,4-DB

R.T.: 10.924 min
 Delta R.T.: -0.002 min
 Response: 663667678
 Conc: 560.92 ng/ml



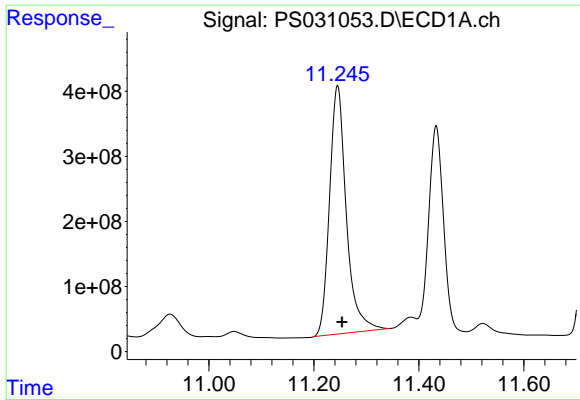
#14 DINOSEB

R.T.: 11.433 min
 Delta R.T.: -0.006 min
 Response: 5623419561
 Conc: 426.54 ng/ml



#14 DINOSEB

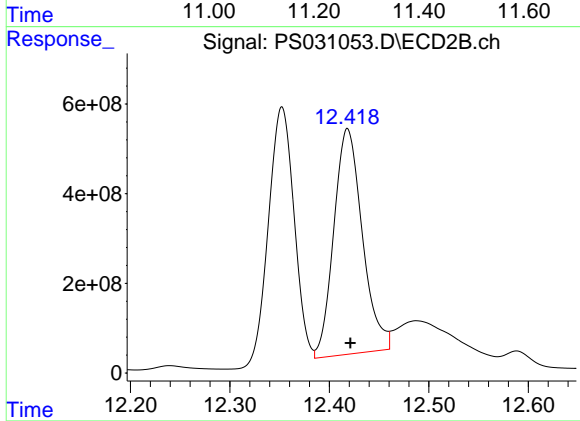
R.T.: 11.308 min
 Delta R.T.: -0.002 min
 Response: 4387234470
 Conc: 386.49 ng/ml



#15 Picloram

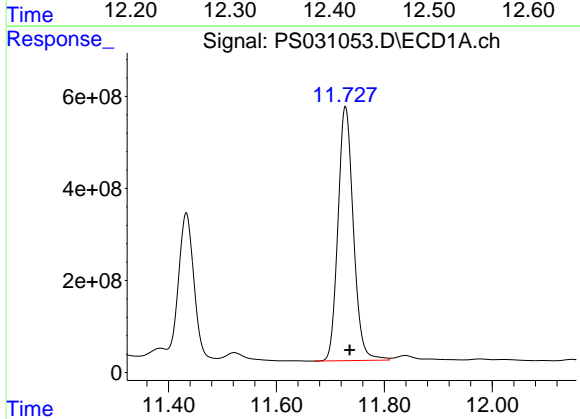
R.T.: 11.245 min
 Delta R.T.: -0.009 min
 Response: 8468064790
 Conc: 581.12 ng/ml

Instrument :
 ECD_S
 ClientSampleId :
 G4(0-6)MSD



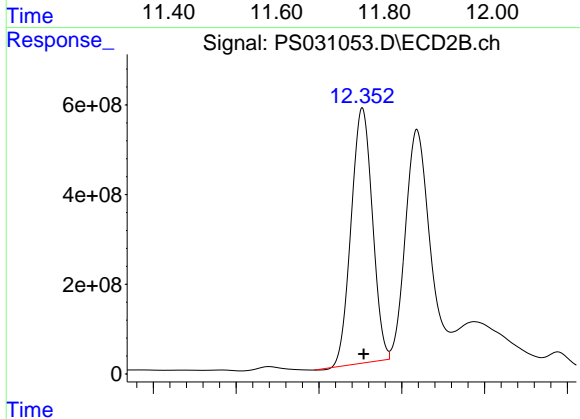
#15 Picloram

R.T.: 12.418 min
 Delta R.T.: -0.003 min
 Response: 10037496845
 Conc: 427.48 ng/ml



#16 DCPA

R.T.: 11.728 min
 Delta R.T.: -0.008 min
 Response: 10926816822
 Conc: 456.48 ng/ml



#16 DCPA

R.T.: 12.352 min
 Delta R.T.: -0.002 min
 Response: 10137119574
 Conc: 449.50 ng/ml