

Data Path : Z:\pestpcbsrv\HPCHEM1\ECD_S\Data\PS071525\
 Data File : PS031055.D
 Signal(s) : Signal #1: ECD1A.ch Signal #2: ECD2B.ch
 Acq On : 16 Jul 2025 04:25
 Operator : AR\AJ
 Sample : Q2489-03
 Misc :
 ALS Vial : 32 Sample Multiplier: 1

Instrument :
 ECD_S
 ClientSampleId :
 G3(0-6)

Integration File signal 1: autoint1.e
 Integration File signal 2: autoint2.e
 Quant Time: Jul 16 06:47:01 2025
 Quant Method : Z:\pestpcbsrv\HPCHEM1\ECD_S\Method\PS071125.M
 Quant Title : 8080.M
 QLast Update : Mon Jul 14 05:51:06 2025
 Response via : Initial Calibration
 Integrator: ChemStation

Volume Inj. : 1 µl
 Signal #1 Phase : ZB-MR1 Signal #2 Phase: ZB-MR2
 Signal #1 Info : 30M x 0.32mm x0.5 Signal #2 Info : 30M x 0.32mm x 0.25µm

Compound	RT#1	RT#2	Resp#1	Resp#2	ng/ml	ng/ml

System Monitoring Compounds						
4) S 2,4-DCAA	7.329	7.766	2800.7E6	798.9E6	708.118	771.155
Target Compounds						
1) T Dalapon	2.670f	2.708	1453.6E6	2515.7E6	238.617	884.913 #
2) T 3,5-DICHL...	6.499	6.753f	11024047	11962864	2.104	7.716 #
3) T 4-Nitroph...	7.123	0.000	8875284	0	6.574	N.D. #
6) T MCPP	7.722	0.000	42201156	0	4.586	N.D. #
7) T MCPA	7.845	8.307	13505508	112.1E6	1.238	34.979 #
8) T DICHLORPROP	8.243	8.667	20018708	6640819	5.879	4.371 #
9) T 2,4-D	8.477	9.032	22555346	-827555	7.327	N.D. #
10) T Pentachlo...	8.772	9.550	86657497	88447815	1.724	2.295 #
11) T 2,4,5-TP ...	9.360	9.911	72743569	1818.3E6	3.909	123.900 #
12) T 2,4,5-T	9.618f	10.387f	31591672	111.0E6	2.077	7.931 #
13) T 2,4-DB	10.252f	10.959f	147.7E6	25840954	68.025	21.840 #
15) T Picloram	11.299f	0.000	2964235	0	<MDL	N.D. #
16) T DCPA	11.695f	0.000	53759623	0	2.246	N.D. #

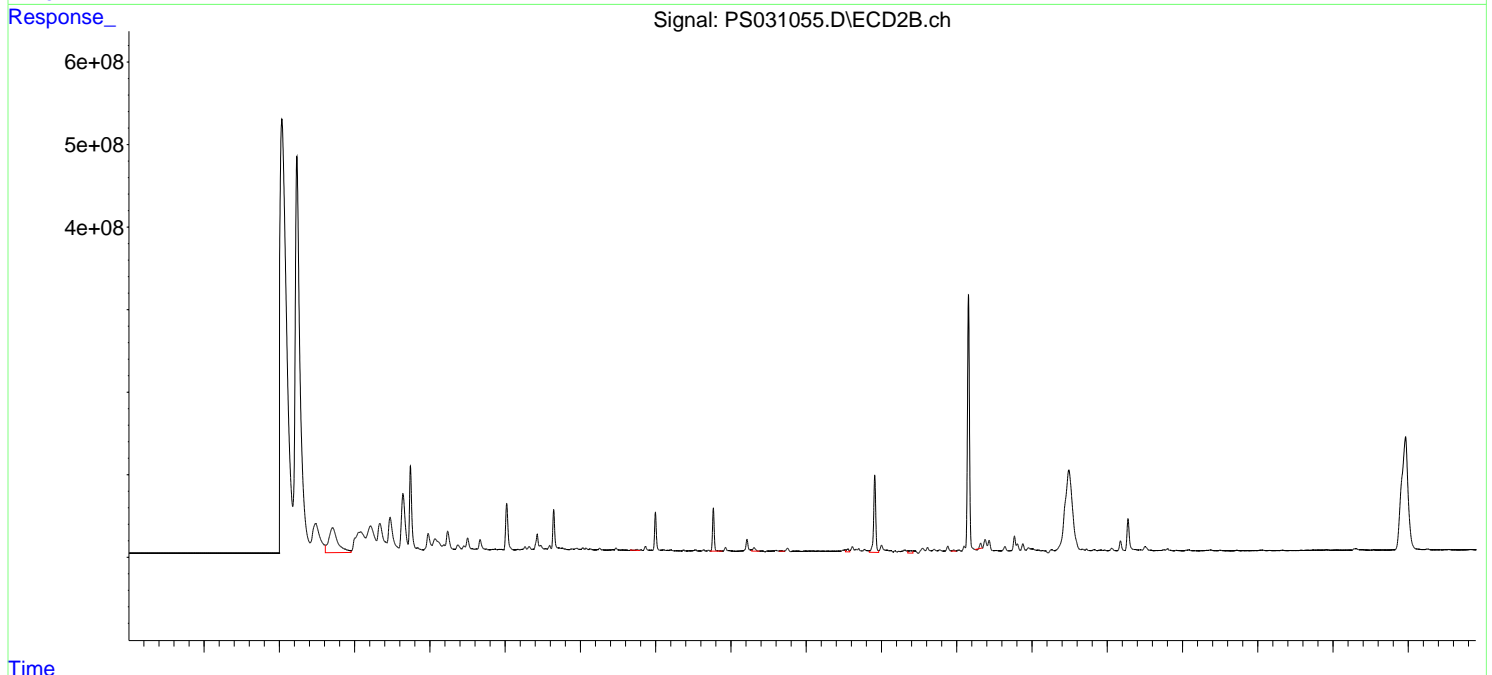
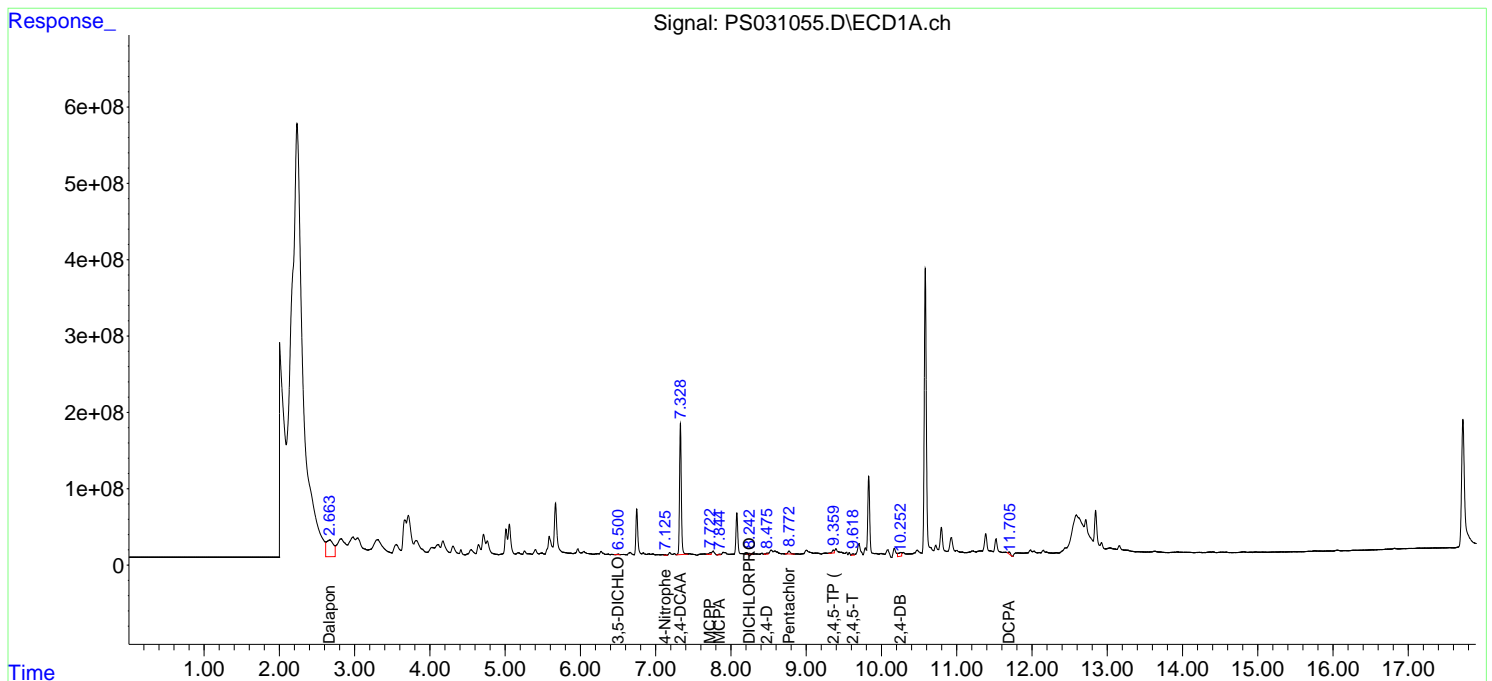
(f)=RT Delta > 1/2 Window (#)=Amounts differ by > 25% (m)=manual int.

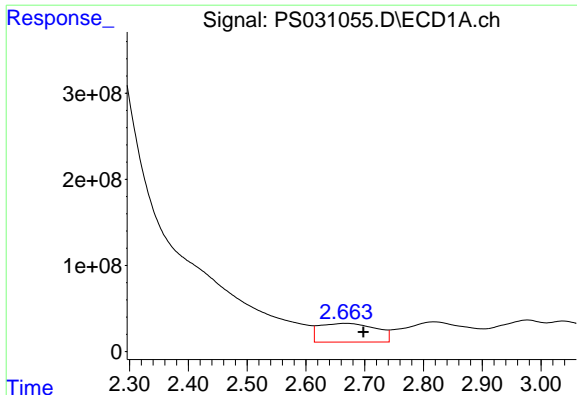
Data Path : Z:\pestpcbsrv\HPCHEM1\ECD_S\Data\PS071525\
 Data File : PS031055.D
 Signal(s) : Signal #1: ECD1A.ch Signal #2: ECD2B.ch
 Acq On : 16 Jul 2025 04:25
 Operator : AR\AJ
 Sample : Q2489-03
 Misc :
 ALS Vial : 32 Sample Multiplier: 1

Instrument :
 ECD_S
 ClientSampleId :
 G3(0-6)

Integration File signal 1: autoint1.e
 Integration File signal 2: autoint2.e
 Quant Time: Jul 16 06:47:01 2025
 Quant Method : Z:\pestpcbsrv\HPCHEM1\ECD_S\Method\PS071125.M
 Quant Title : 8080.M
 QLast Update : Mon Jul 14 05:51:06 2025
 Response via : Initial Calibration
 Integrator: ChemStation

Volume Inj. : 1 µl
 Signal #1 Phase : ZB-MR1 Signal #2 Phase: ZB-MR2
 Signal #1 Info : 30M x 0.32mm x0.5 Signal #2 Info : 30M x 0.32mm x 0.25µm

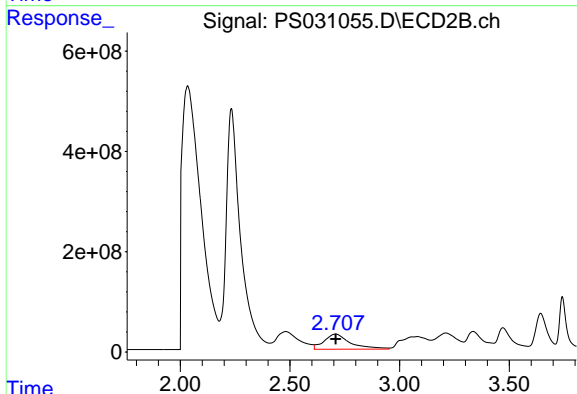




#1 Dalapon

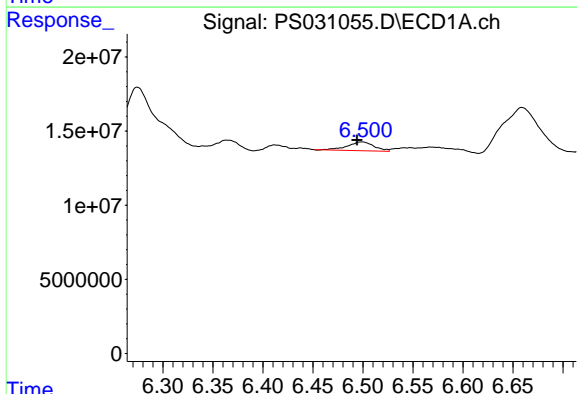
R.T.: 2.670 min
 Delta R.T.: -0.028 min
 Response: 1453589677
 Conc: 238.62 ng/ml

Instrument :
 ECD_S
 ClientSampleId :
 G3(0-6)



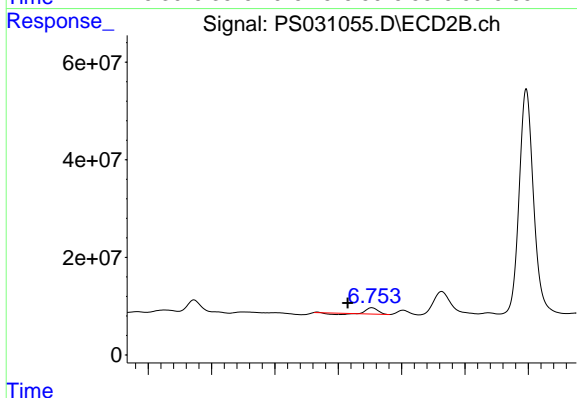
#1 Dalapon

R.T.: 2.708 min
 Delta R.T.: 0.000 min
 Response: 2515683550
 Conc: 884.91 ng/ml



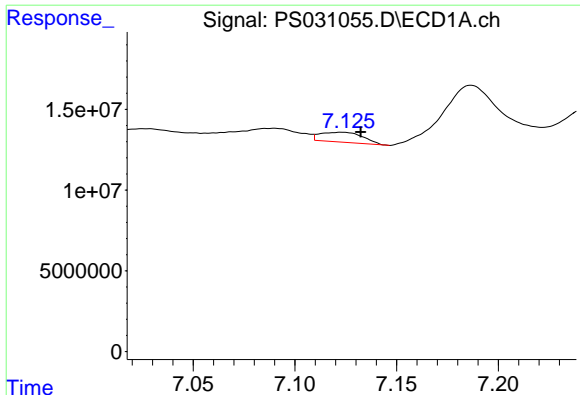
#2 3,5-DICHLOROBENZOIC ACID

R.T.: 6.499 min
 Delta R.T.: 0.005 min
 Response: 11024047
 Conc: 2.10 ng/ml



#2 3,5-DICHLOROBENZOIC ACID

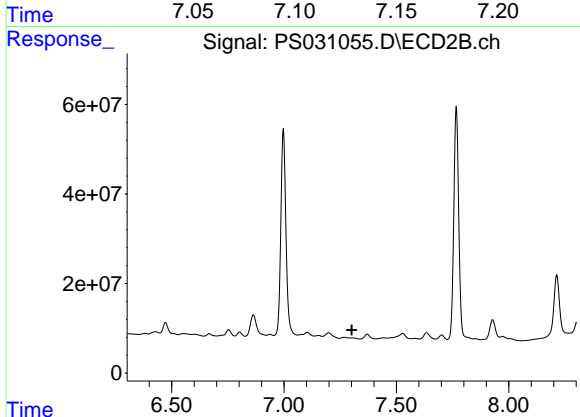
R.T.: 6.753 min
 Delta R.T.: 0.038 min
 Response: 11962864
 Conc: 7.72 ng/ml



#3 4-Nitrophenol

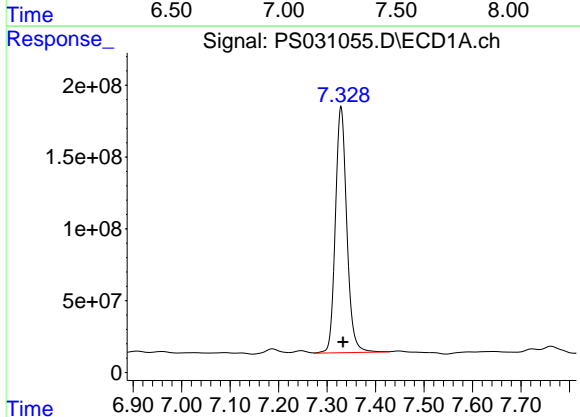
R.T.: 7.123 min
 Delta R.T.: -0.009 min
 Response: 8875284
 Conc: 6.57 ng/ml

Instrument :
 ECD_S
 ClientSampleId :
 G3(0-6)



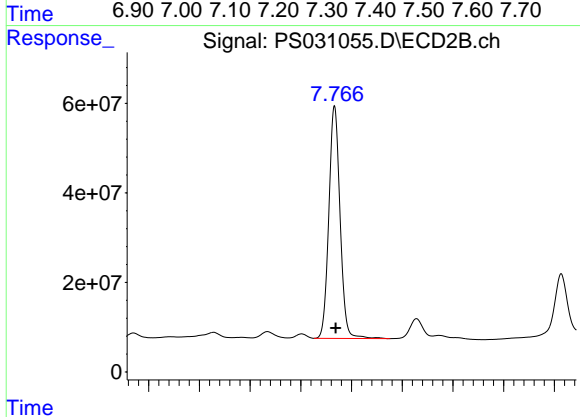
#3 4-Nitrophenol

R.T.: 0.000 min
 Exp R.T. : 7.301 min
 Response: 0
 Conc: N.D.



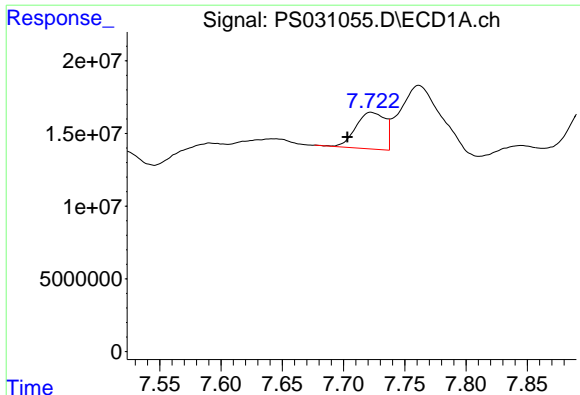
#4 2,4-DCAA

R.T.: 7.329 min
 Delta R.T.: -0.004 min
 Response: 2800660472
 Conc: 708.12 ng/ml



#4 2,4-DCAA

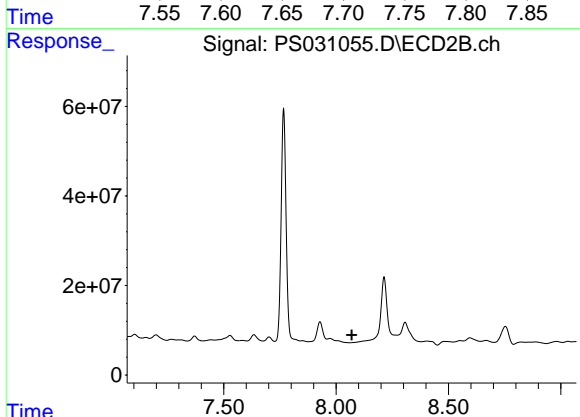
R.T.: 7.766 min
 Delta R.T.: -0.002 min
 Response: 798941463
 Conc: 771.15 ng/ml



#6 MCPP

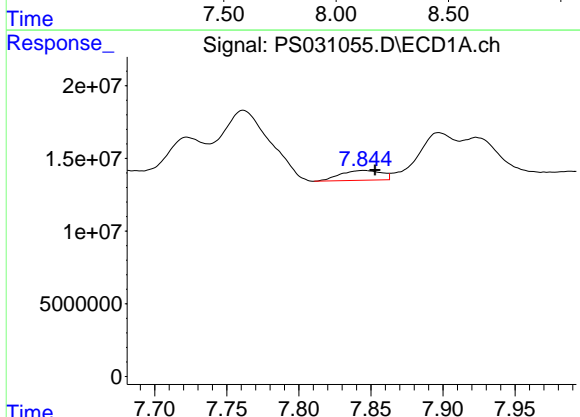
R.T.: 7.722 min
 Delta R.T.: 0.019 min
 Response: 42201156
 Conc: 4.59 ug/ml

Instrument :
 ECD_S
 ClientSampleId :
 G3(0-6)



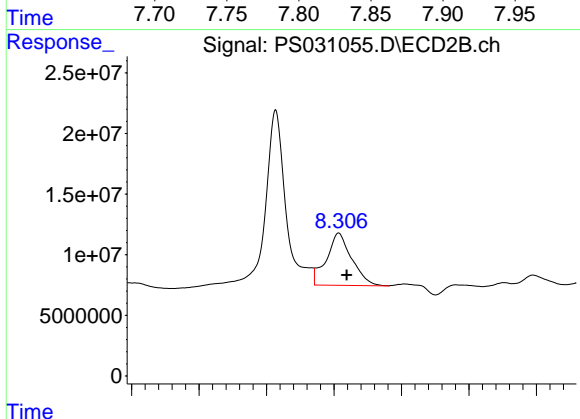
#6 MCPP

R.T.: 0.000 min
 Exp R.T. : 8.069 min
 Response: 0
 Conc: N.D.



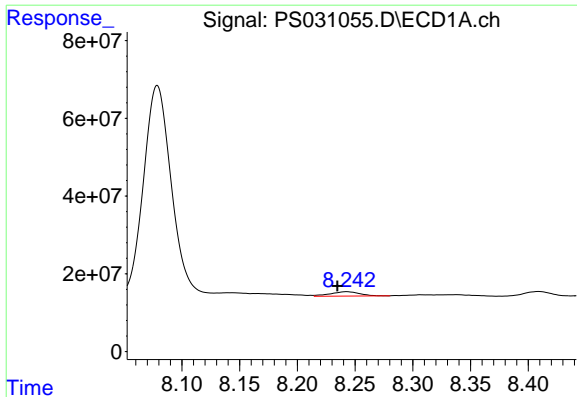
#7 MCPA

R.T.: 7.845 min
 Delta R.T.: -0.008 min
 Response: 13505508
 Conc: 1.24 ug/ml



#7 MCPA

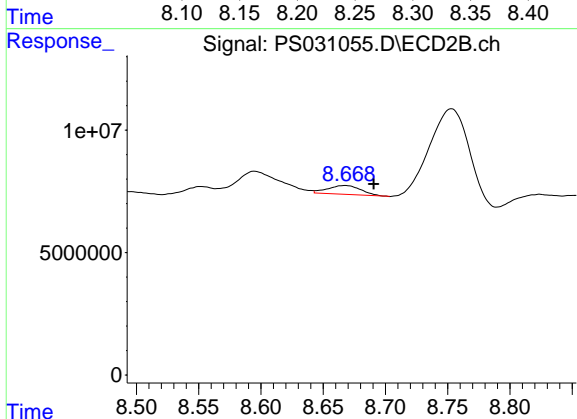
R.T.: 8.307 min
 Delta R.T.: -0.012 min
 Response: 112130025
 Conc: 34.98 ug/ml



#8 DICHLORPROP

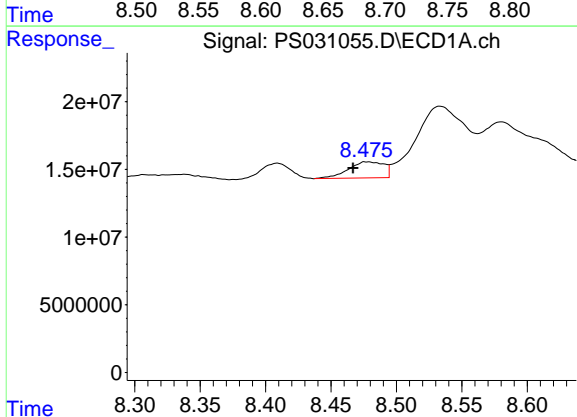
R.T.: 8.243 min
 Delta R.T.: 0.008 min
 Response: 20018708
 Conc: 5.88 ng/ml

Instrument :
 ECD_S
 ClientSampleId :
 G3(0-6)



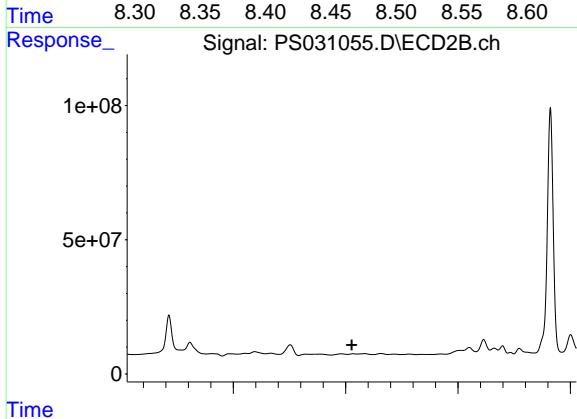
#8 DICHLORPROP

R.T.: 8.667 min
 Delta R.T.: -0.023 min
 Response: 6640819
 Conc: 4.37 ng/ml



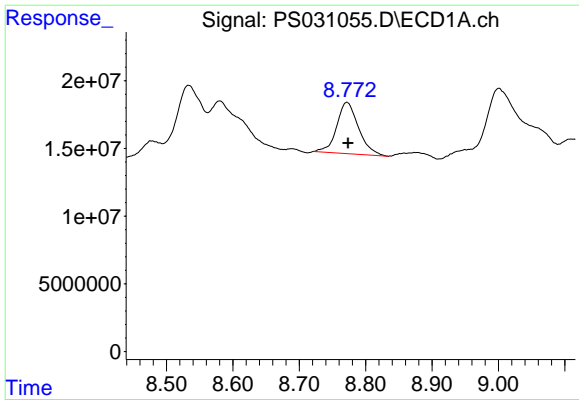
#9 2,4-D

R.T.: 8.477 min
 Delta R.T.: 0.010 min
 Response: 22555346
 Conc: 7.33 ng/ml



#9 2,4-D

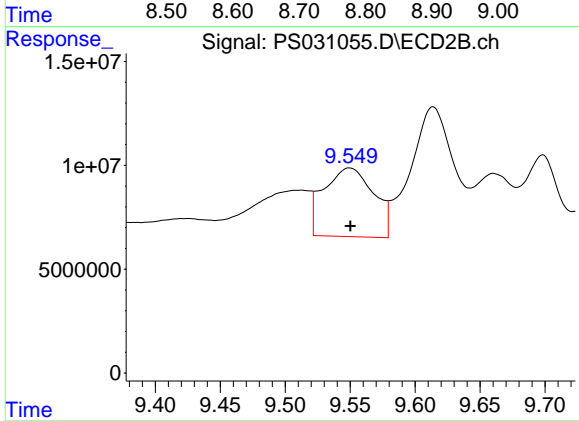
R.T.: 9.032 min
 Delta R.T.: 0.005 min
 Response: -827555
 Conc: N.D.



#10 Pentachloropheno1

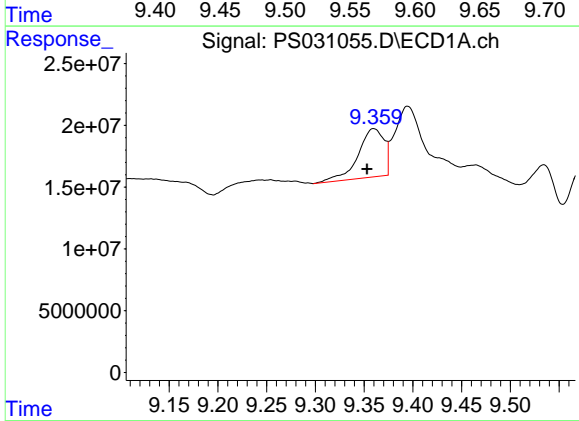
R.T.: 8.772 min
 Delta R.T.: -0.002 min
 Response: 86657497
 Conc: 1.72 ng/ml

Instrument :
 ECD_S
 ClientSampleId :
 G3(0-6)



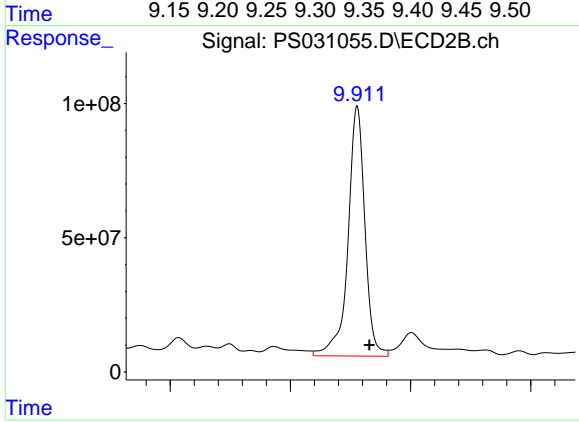
#10 Pentachloropheno1

R.T.: 9.550 min
 Delta R.T.: 0.000 min
 Response: 88447815
 Conc: 2.30 ng/ml



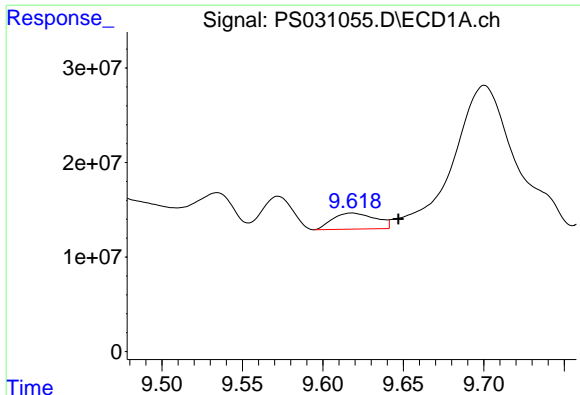
#11 2,4,5-TP (SILVEX)

R.T.: 9.360 min
 Delta R.T.: 0.007 min
 Response: 72743569
 Conc: 3.91 ng/ml



#11 2,4,5-TP (SILVEX)

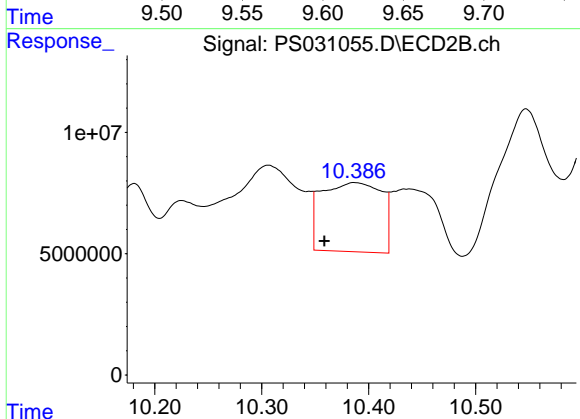
R.T.: 9.911 min
 Delta R.T.: -0.021 min
 Response: 1818333886
 Conc: 123.90 ng/ml



#12 2,4,5-T

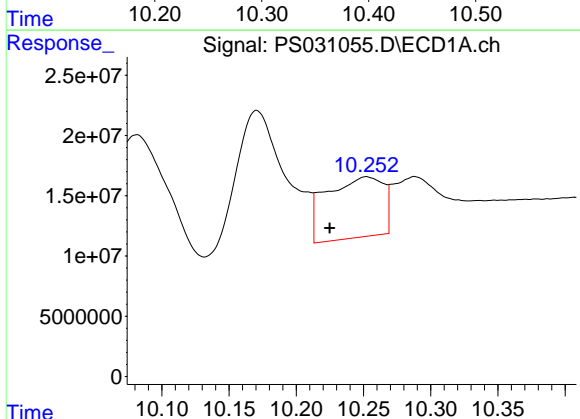
R.T.: 9.618 min
 Delta R.T.: -0.029 min
 Response: 31591672
 Conc: 2.08 ng/ml

Instrument :
 ECD_S
 ClientSampleId :
 G3(0-6)



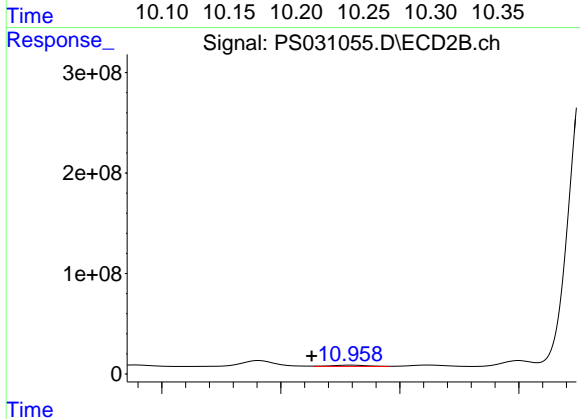
#12 2,4,5-T

R.T.: 10.387 min
 Delta R.T.: 0.029 min
 Response: 110963465
 Conc: 7.93 ng/ml



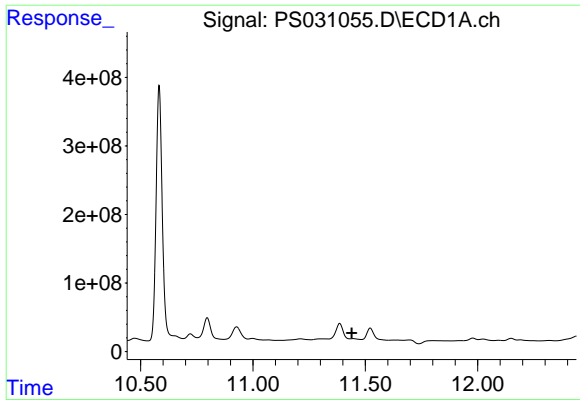
#13 2,4-DB

R.T.: 10.252 min
 Delta R.T.: 0.027 min
 Response: 147668908
 Conc: 68.03 ng/ml



#13 2,4-DB

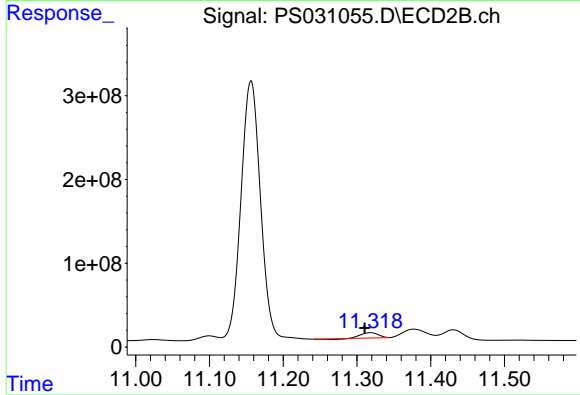
R.T.: 10.959 min
 Delta R.T.: 0.033 min
 Response: 25840954
 Conc: 21.84 ng/ml



#14 DINOSEB

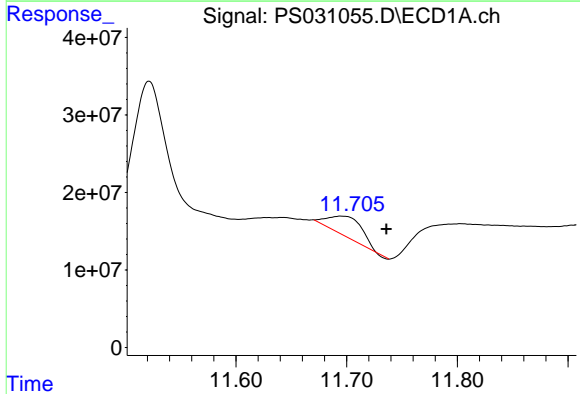
R.T.: 11.446 min
 Delta R.T.: 0.007 min
 Response: -162932750
 Conc: N.D.

Instrument :
 ECD_S
 ClientSampleId :
 G3(0-6)



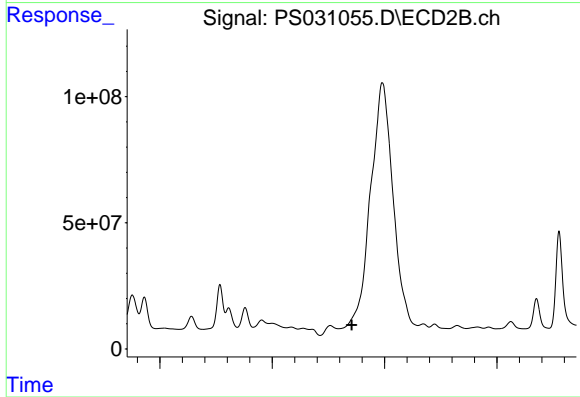
#14 DINOSEB

R.T.: 11.318 min
 Delta R.T.: 0.008 min
 Response: 92654624
 Conc: 8.16 ng/ml



#16 DCPA

R.T.: 11.695 min
 Delta R.T.: -0.040 min
 Response: 53759623
 Conc: 2.25 ng/ml



#16 DCPA

R.T.: 0.000 min
 Exp R.T. : 12.354 min
 Response: 0
 Conc: N.D.