

Data Path : Z:\pestpcbsrv\HPCHEM1\ECD_S\Data\PS071525\
 Data File : PS031056.D
 Signal(s) : Signal #1: ECD1A.ch Signal #2: ECD2B.ch
 Acq On : 16 Jul 2025 04:49
 Operator : AR\AJ
 Sample : Q2489-04
 Misc :
 ALS Vial : 33 Sample Multiplier: 1

Instrument :
 ECD_S
 ClientSampleId :
 G3(6-12)

Integration File signal 1: autoint1.e
 Integration File signal 2: autoint2.e
 Quant Time: Jul 16 06:47:15 2025
 Quant Method : Z:\pestpcbsrv\HPCHEM1\ECD_S\Method\PS071125.M
 Quant Title : 8080.M
 QLast Update : Mon Jul 14 05:51:06 2025
 Response via : Initial Calibration
 Integrator: ChemStation

Volume Inj. : 1 µl
 Signal #1 Phase : ZB-MR1 Signal #2 Phase: ZB-MR2
 Signal #1 Info : 30M x 0.32mm x0.5 Signal #2 Info : 30M x 0.32mm x 0.25µm

Compound	RT#1	RT#2	Resp#1	Resp#2	ng/ml	ng/ml

System Monitoring Compounds						
4) S 2,4-DCAA	7.329	7.767	1598.7E6	450.0E6	404.204	434.311
Target Compounds						
1) T Dalapon	2.668f	2.710	1541.8E6	2635.9E6	253.101	927.187 #
2) T 3,5-DICHL...	6.502	6.753f	7903452	13674839	1.509	8.821 #
3) T 4-Nitroph...	7.120	0.000	6665569	0	4.937	N.D. #
6) T MCPP	7.724	0.000	41680056	0	4.530	N.D. #
7) T MCPA	7.841	8.307	9027252	110.3E6	<MDL	34.419 #
8) T DICHLORPROP	8.242	8.667	14671942	5442142	4.309	3.582
9) T 2,4-D	8.480	9.032	15000619	1000673	4.873	<MDL #
10) T Pentachlo...	8.780	9.551	56849893	52827508	1.131	1.371
11) T 2,4,5-TP ...	9.361	9.911	70901011	2102.7E6	3.810	143.280 #
12) T 2,4,5-T	9.619f	10.386f	32551490	115.5E6	2.140	8.257 #
13) T 2,4-DB	10.253f	10.958f	138.5E6	25160144	63.782	21.265 #
14) T DINOSEB	11.447	11.319	-35707294	70042388	N.D.	6.170
16) T DCPA	11.696f	0.000	55381857	0	2.314	N.D. #

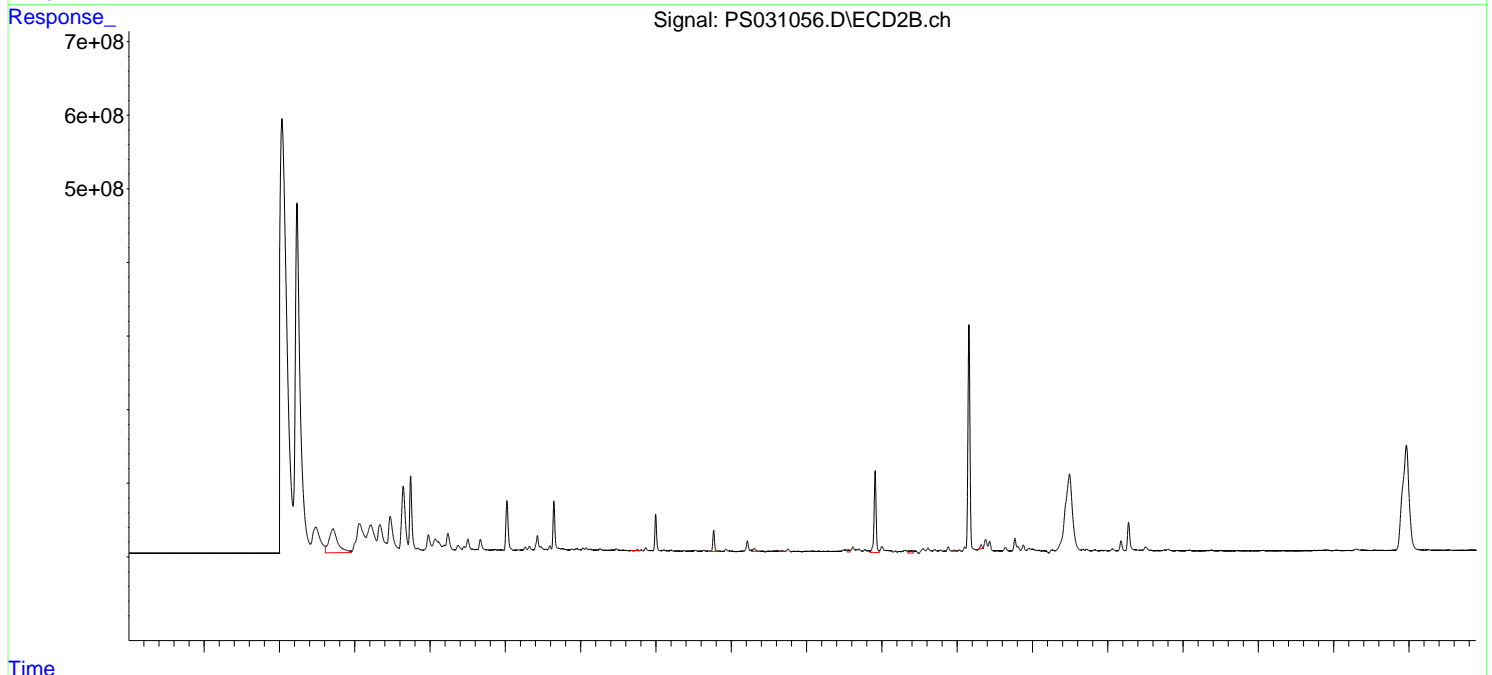
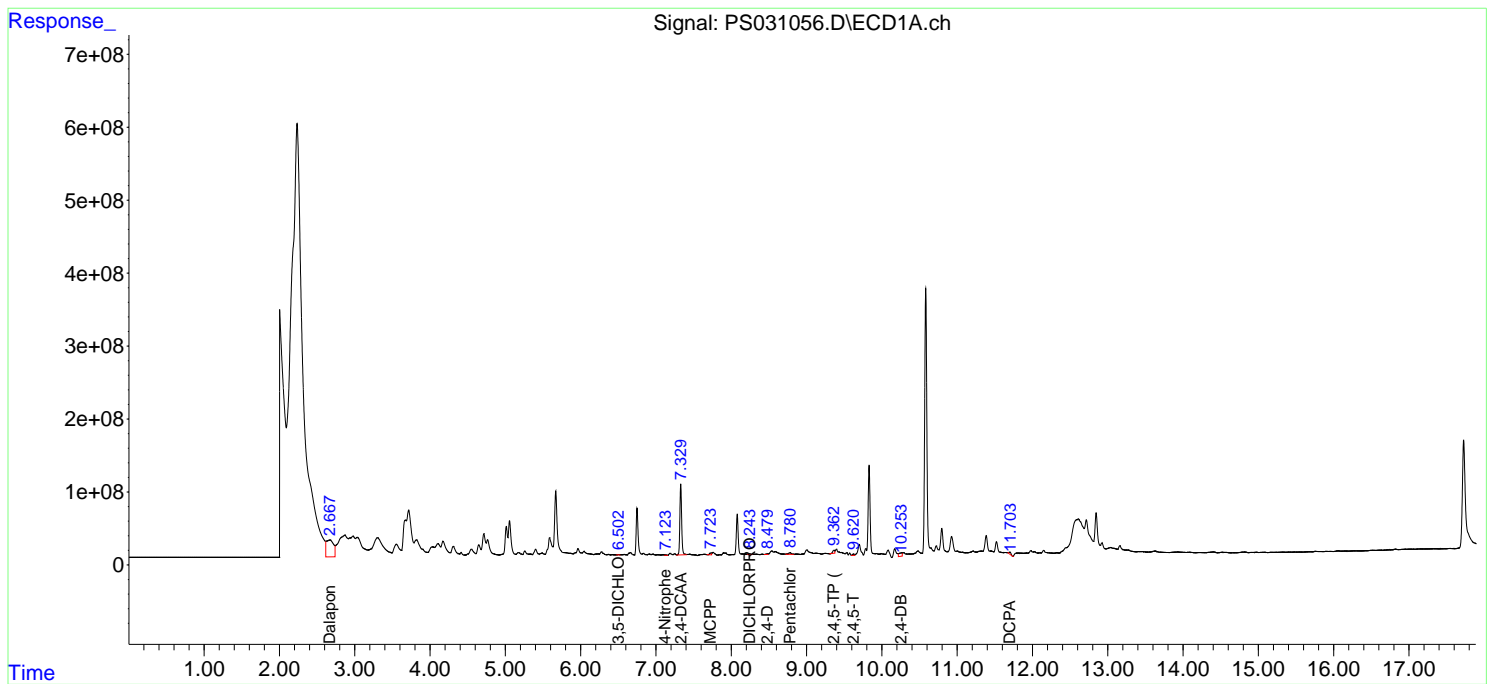
(f)=RT Delta > 1/2 Window (#)=Amounts differ by > 25% (m)=manual int.

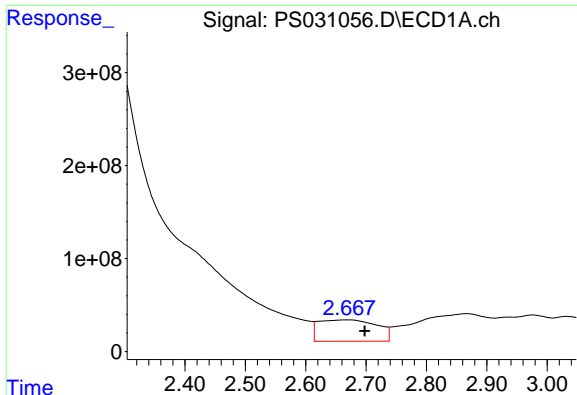
Data Path : Z:\pestpcbsrv\HPCHEM1\ECD_S\Data\PS071525\
 Data File : PS031056.D
 Signal(s) : Signal #1: ECD1A.ch Signal #2: ECD2B.ch
 Acq On : 16 Jul 2025 04:49
 Operator : AR\AJ
 Sample : Q2489-04
 Misc :
 ALS Vial : 33 Sample Multiplier: 1

Instrument :
 ECD_S
 ClientSampleId :
 G3(6-12)

Integration File signal 1: autoint1.e
 Integration File signal 2: autoint2.e
 Quant Time: Jul 16 06:47:15 2025
 Quant Method : Z:\pestpcbsrv\HPCHEM1\ECD_S\Method\PS071125.M
 Quant Title : 8080.M
 QLast Update : Mon Jul 14 05:51:06 2025
 Response via : Initial Calibration
 Integrator: ChemStation

Volume Inj. : 1 µl
 Signal #1 Phase : ZB-MR1 Signal #2 Phase: ZB-MR2
 Signal #1 Info : 30M x 0.32mm x0.5 Signal #2 Info : 30M x 0.32mm x 0.25µm

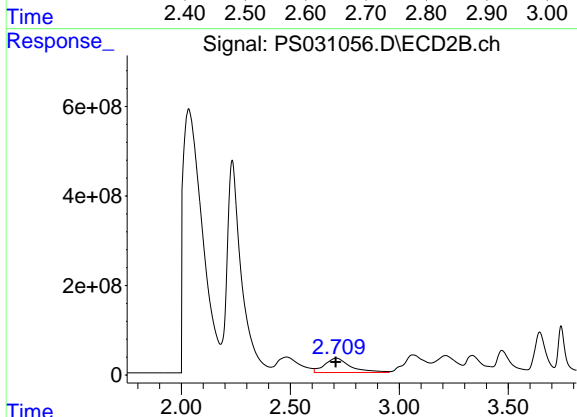




#1 Dalapon

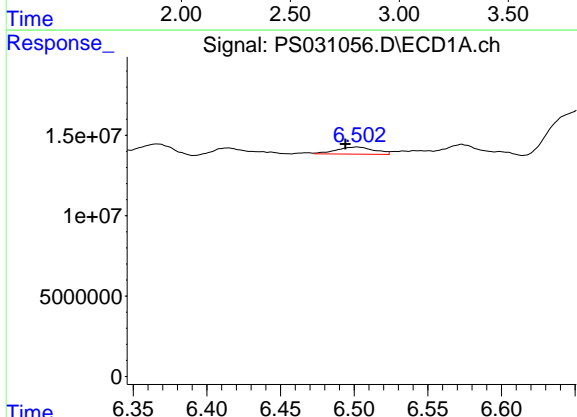
R.T.: 2.668 min
 Delta R.T.: -0.030 min
 Response: 1541822949
 Conc: 253.10 ng/ml

Instrument :
 ECD_S
 ClientSampleId :
 G3(6-12)



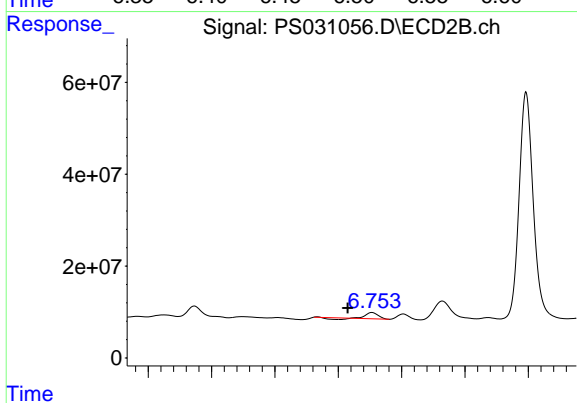
#1 Dalapon

R.T.: 2.710 min
 Delta R.T.: 0.002 min
 Response: 2635862221
 Conc: 927.19 ng/ml



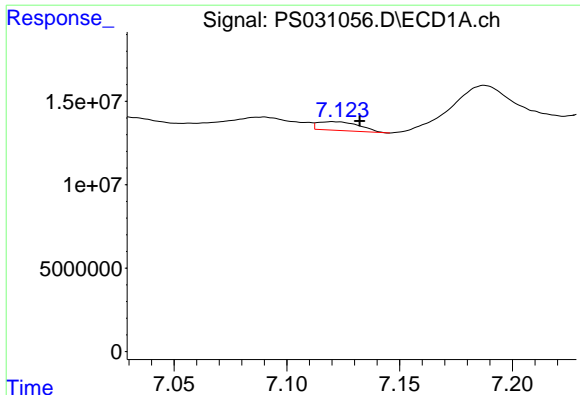
#2 3,5-DICHLOROBENZOIC ACID

R.T.: 6.502 min
 Delta R.T.: 0.008 min
 Response: 7903452
 Conc: 1.51 ng/ml



#2 3,5-DICHLOROBENZOIC ACID

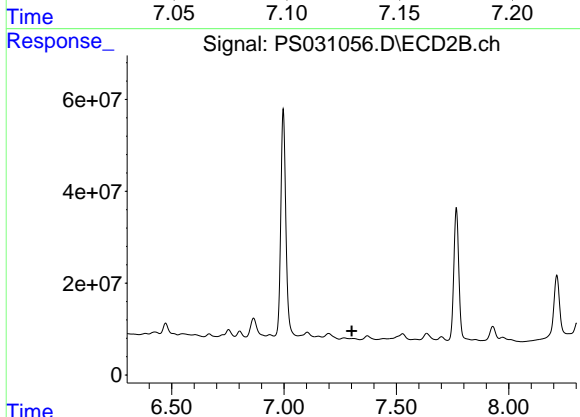
R.T.: 6.753 min
 Delta R.T.: 0.038 min
 Response: 13674839
 Conc: 8.82 ng/ml



#3 4-Nitrophenol

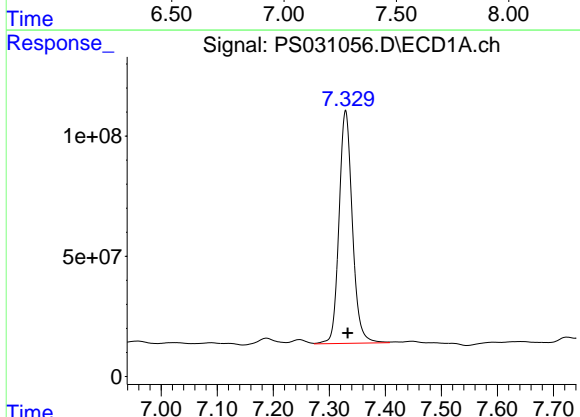
R.T.: 7.120 min
 Delta R.T.: -0.012 min
 Response: 6665569
 Conc: 4.94 ng/ml

Instrument :
 ECD_S
 ClientSampleId :
 G3(6-12)



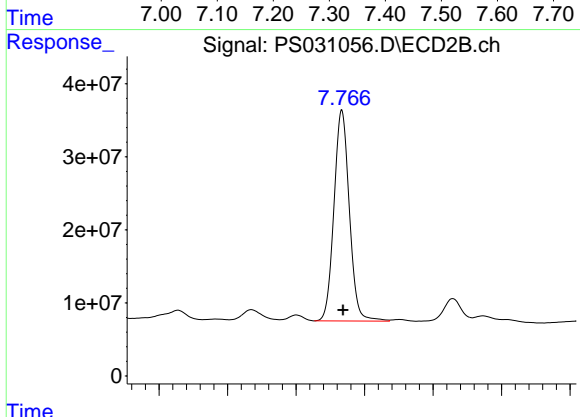
#3 4-Nitrophenol

R.T.: 0.000 min
 Exp R.T. : 7.301 min
 Response: 0
 Conc: N.D.



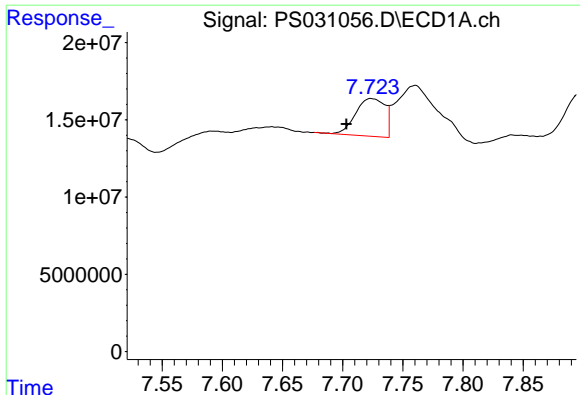
#4 2,4-DCAA

R.T.: 7.329 min
 Delta R.T.: -0.004 min
 Response: 1598656345
 Conc: 404.20 ng/ml



#4 2,4-DCAA

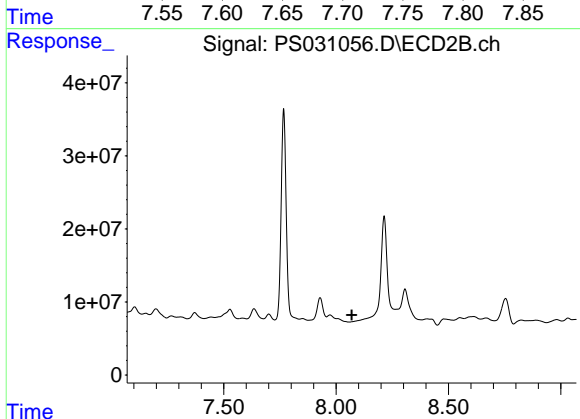
R.T.: 7.767 min
 Delta R.T.: -0.002 min
 Response: 449960115
 Conc: 434.31 ng/ml



#6 MCPP

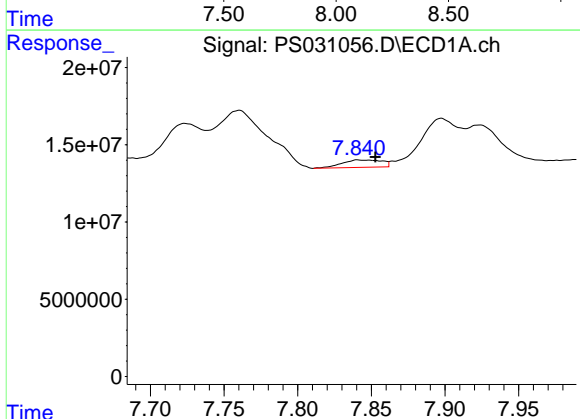
R.T.: 7.724 min
 Delta R.T.: 0.021 min
 Response: 41680056
 Conc: 4.53 ug/ml

Instrument :
 ECD_S
 ClientSampleId :
 G3(6-12)



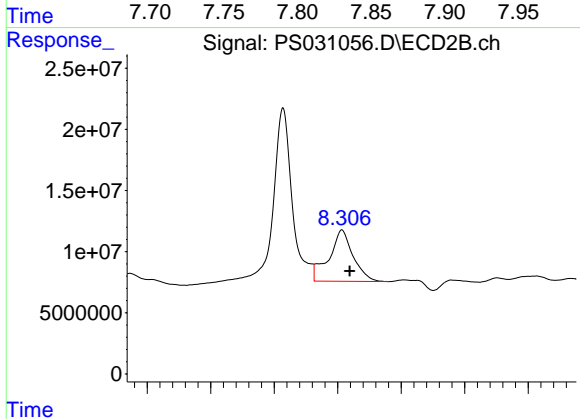
#6 MCPP

R.T.: 0.000 min
 Exp R.T. : 8.069 min
 Response: 0
 Conc: N.D.



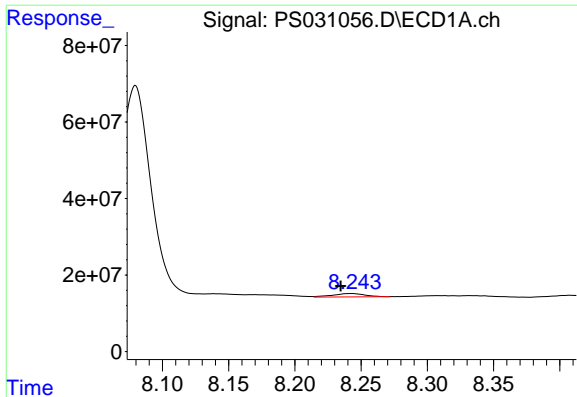
#7 MCPA

R.T.: 7.841 min
 Delta R.T.: -0.012 min
 Response: 9027252
 Conc: N.D.



#7 MCPA

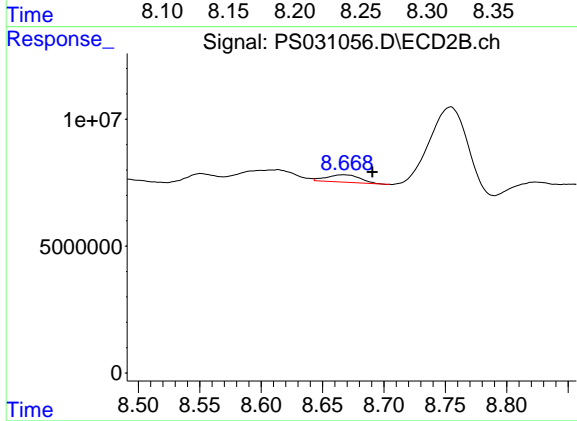
R.T.: 8.307 min
 Delta R.T.: -0.012 min
 Response: 110335187
 Conc: 34.42 ug/ml



#8 DICHLORPROP

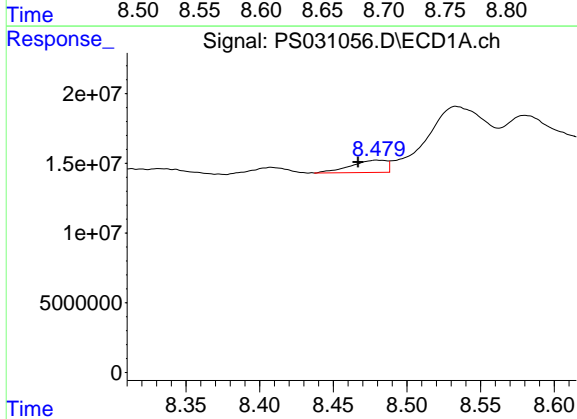
R.T.: 8.242 min
 Delta R.T.: 0.008 min
 Response: 14671942
 Conc: 4.31 ng/ml

Instrument :
 ECD_S
 ClientSampleId :
 G3(6-12)



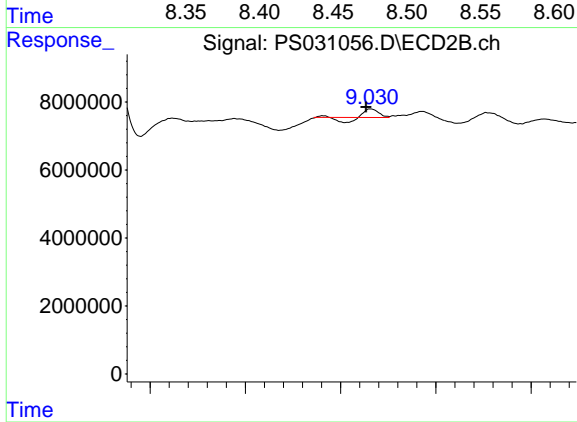
#8 DICHLORPROP

R.T.: 8.667 min
 Delta R.T.: -0.023 min
 Response: 5442142
 Conc: 3.58 ng/ml



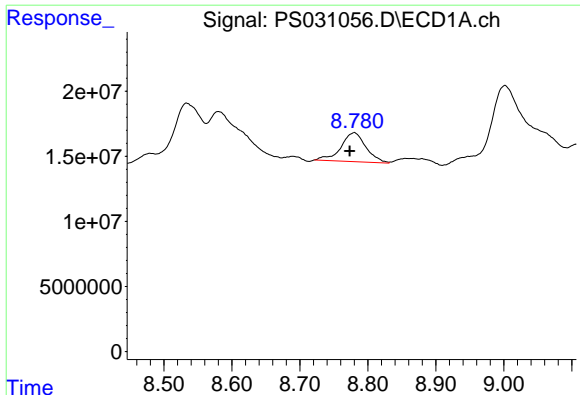
#9 2,4-D

R.T.: 8.480 min
 Delta R.T.: 0.013 min
 Response: 15000619
 Conc: 4.87 ng/ml



#9 2,4-D

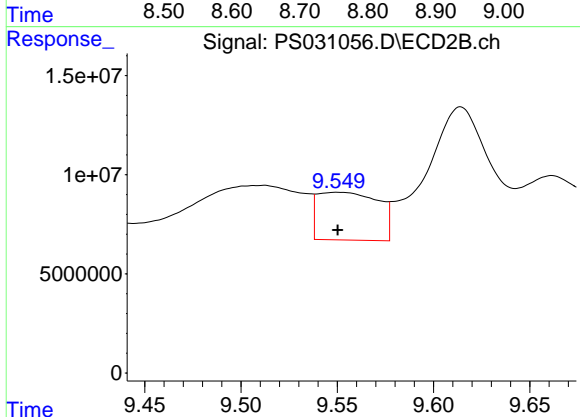
R.T.: 9.032 min
 Delta R.T.: 0.005 min
 Response: 1000673
 Conc: N.D.



#10 Pentachloropheno1

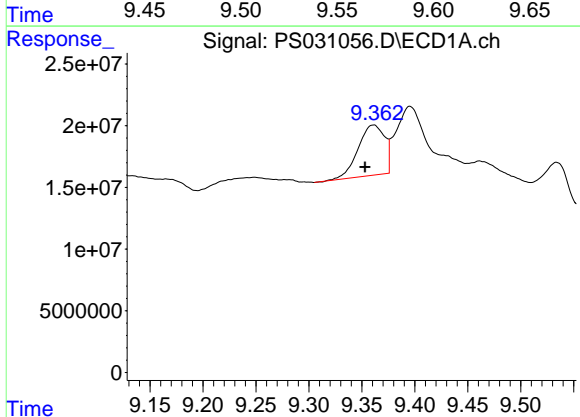
R.T.: 8.780 min
 Delta R.T.: 0.007 min
 Response: 56849893
 Conc: 1.13 ng/ml

Instrument :
 ECD_S
 ClientSampleId :
 G3(6-12)



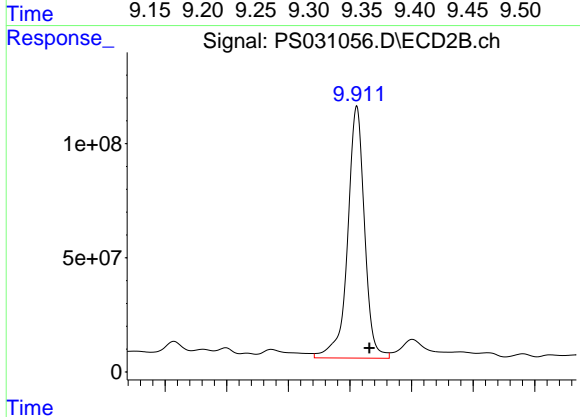
#10 Pentachloropheno1

R.T.: 9.551 min
 Delta R.T.: 0.000 min
 Response: 52827508
 Conc: 1.37 ng/ml



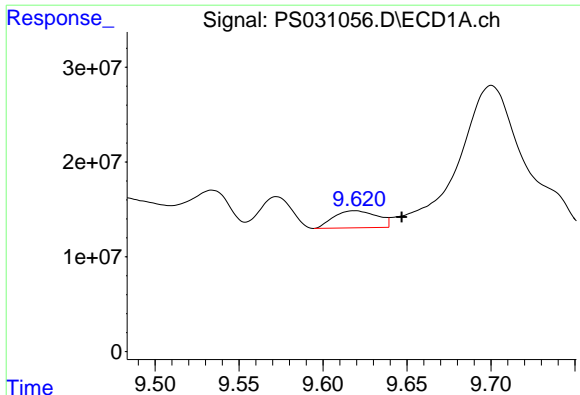
#11 2,4,5-TP (SILVEX)

R.T.: 9.361 min
 Delta R.T.: 0.008 min
 Response: 70901011
 Conc: 3.81 ng/ml



#11 2,4,5-TP (SILVEX)

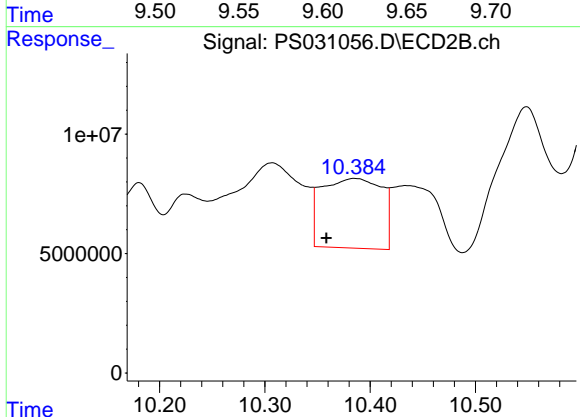
R.T.: 9.911 min
 Delta R.T.: -0.021 min
 Response: 2102747103
 Conc: 143.28 ng/ml



#12 2,4,5-T

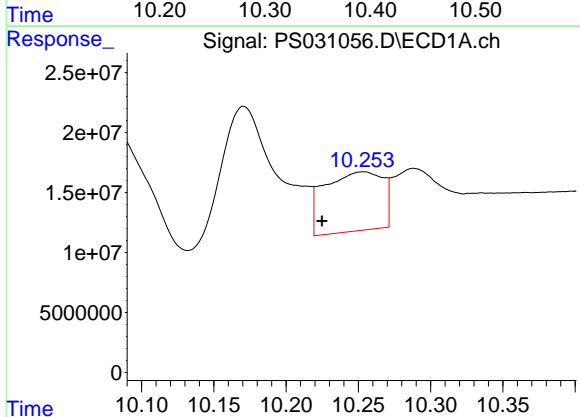
R.T.: 9.619 min
 Delta R.T.: -0.028 min
 Response: 32551490
 Conc: 2.14 ng/ml

Instrument :
 ECD_S
 ClientSampleId :
 G3(6-12)



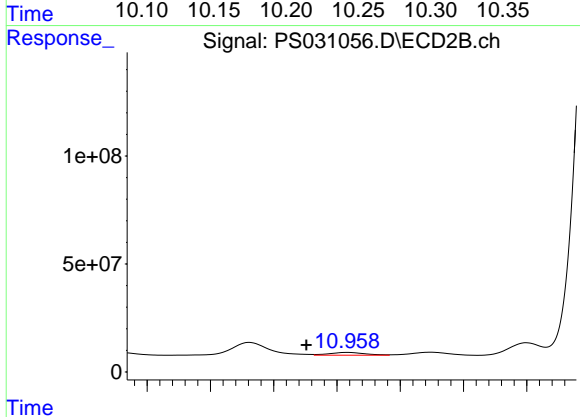
#12 2,4,5-T

R.T.: 10.386 min
 Delta R.T.: 0.027 min
 Response: 115528486
 Conc: 8.26 ng/ml



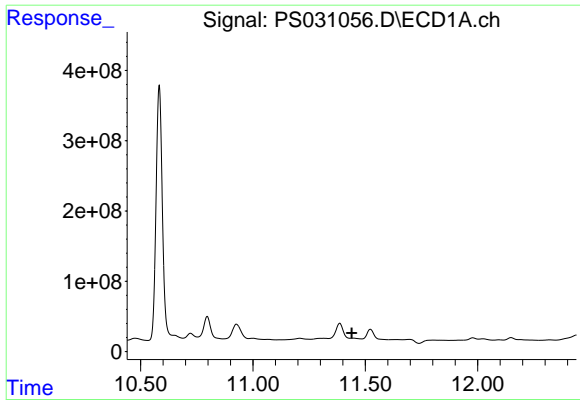
#13 2,4-DB

R.T.: 10.253 min
 Delta R.T.: 0.028 min
 Response: 138457983
 Conc: 63.78 ng/ml



#13 2,4-DB

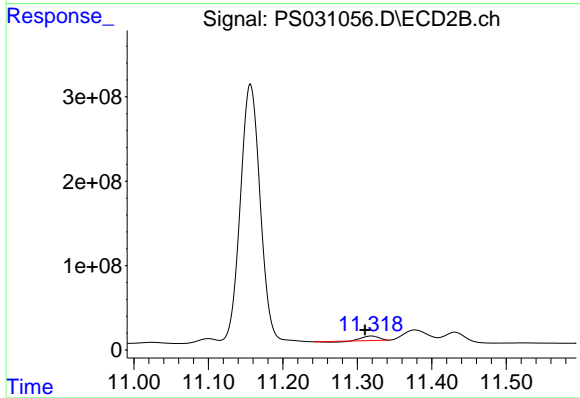
R.T.: 10.958 min
 Delta R.T.: 0.032 min
 Response: 25160144
 Conc: 21.26 ng/ml



#14 DINOSEB

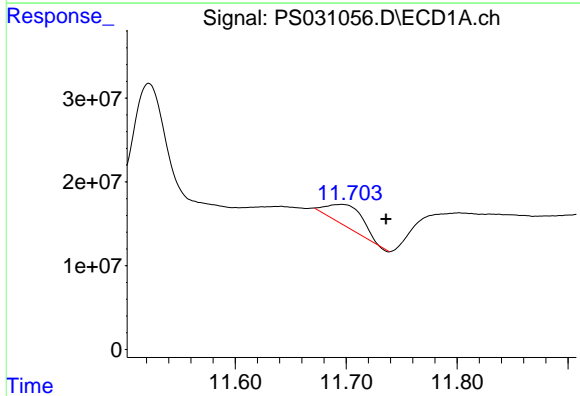
R.T.: 11.447 min
 Delta R.T.: 0.008 min
 Response: -35707294
 Conc: N.D.

Instrument :
 ECD_S
 ClientSampleId :
 G3(6-12)



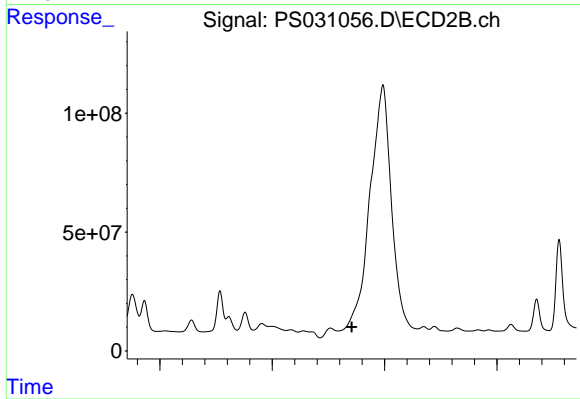
#14 DINOSEB

R.T.: 11.319 min
 Delta R.T.: 0.008 min
 Response: 70042388
 Conc: 6.17 ng/ml



#16 DCPA

R.T.: 11.696 min
 Delta R.T.: -0.040 min
 Response: 55381857
 Conc: 2.31 ng/ml



#16 DCPA

R.T.: 0.000 min
 Exp R.T. : 12.354 min
 Response: 0
 Conc: N.D.