

Data Path : Z:\pestpcbsrv\HPCHEM1\ECD_S\Data\PS071525\
 Data File : PS031061.D
 Signal(s) : Signal #1: ECD1A.ch Signal #2: ECD2B.ch
 Acq On : 16 Jul 2025 06:50
 Operator : AR\AJ
 Sample : I.BLK
 Misc :
 ALS Vial : 2 Sample Multiplier: 1

Instrument :
 ECD_S
 ClientSampleId :
 I.BLK

Integration File signal 1: autoint1.e
 Integration File signal 2: autoint2.e
 Quant Time: Jul 16 07:22:26 2025
 Quant Method : Z:\pestpcbsrv\HPCHEM1\ECD_S\Method\PS071125.M
 Quant Title : 8080.M
 QLast Update : Mon Jul 14 05:51:06 2025
 Response via : Initial Calibration
 Integrator: ChemStation

Volume Inj. : 1 µl
 Signal #1 Phase : ZB-MR1 Signal #2 Phase: ZB-MR2
 Signal #1 Info : 30M x 0.32mm x0.5 Signal #2 Info : 30M x 0.32mm x 0.25µm

Compound	RT#1	RT#2	Resp#1	Resp#2	ng/ml	ng/ml

System Monitoring Compounds						
4) S 2,4-DCAA	7.329	7.768	1781.5E6	513.6E6	450.438	495.745
Target Compounds						
1) T Dalapon	0.000	2.672f	0	55794850	N.D.	19.626
2) T 3,5-DICHL...	6.484	0.000	18390743	0	3.511	N.D. #
3) T 4-Nitroph...	7.124	0.000	7056281	0	5.227	N.D. #
5) T DICAMBA	7.519	7.986	2361099	2863227	<MDL	<MDL #
6) T MCPP	7.661f	0.000	572217	0	<MDL	N.D. #
7) T MCPA	7.867	8.279f	583648	50389395	<MDL	15.719 #
8) T DICHLORPROP	8.191f	0.000	7095007	0	2.084	N.D. #
10) T Pentachlo...	8.765	9.550	9556882	5876165	<MDL	<MDL #
11) T 2,4,5-TP ...	9.349	9.927	12203580	11490168	<MDL	<MDL #
12) T 2,4,5-T	9.650	10.373	3658106	6226503	<MDL	<MDL #
13) T 2,4-DB	10.212	10.902	2309775	3088897	1.064	2.611 #
14) T DINOSEB	11.433	11.310	6432449	1200030	<MDL	<MDL #
15) T Picloram	11.245	0.000	9493381	0	<MDL	N.D. #
16) T DCPA	11.729	0.000	14483373	0	<MDL	N.D. #

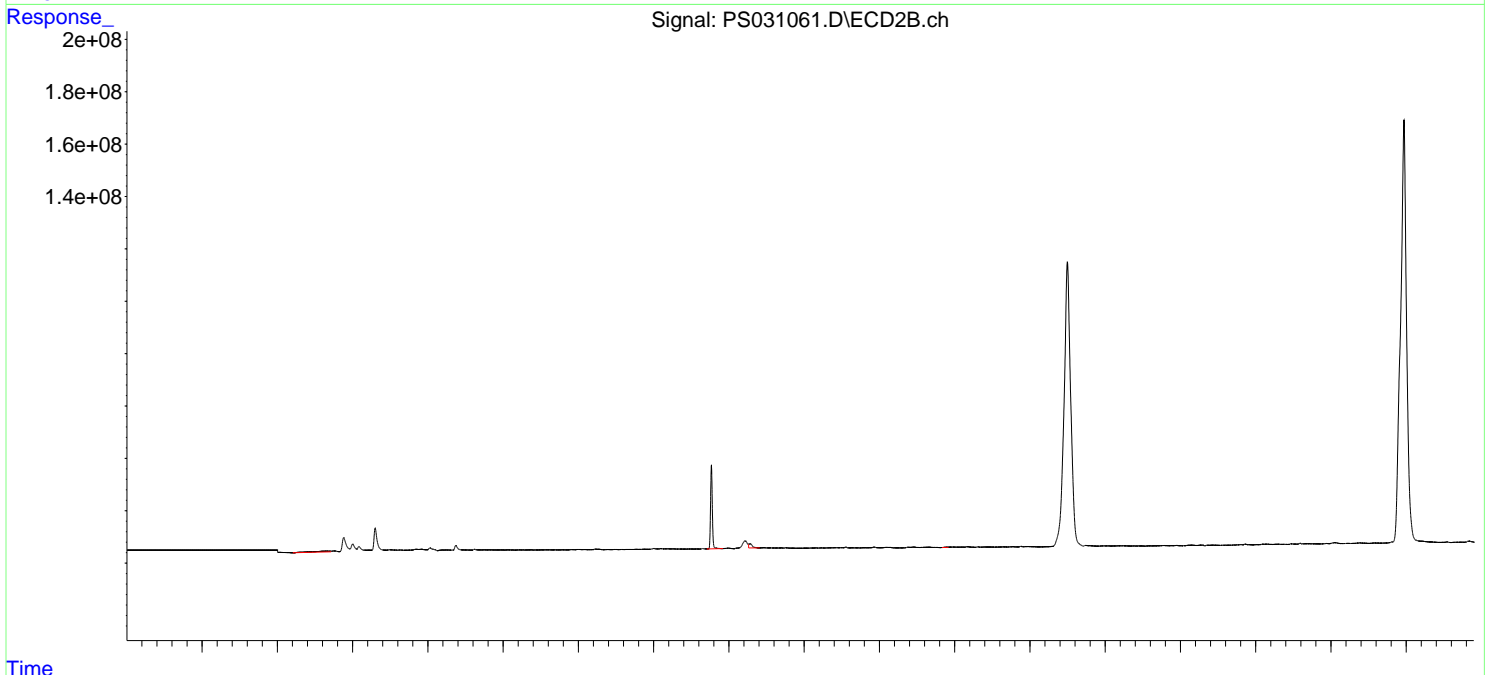
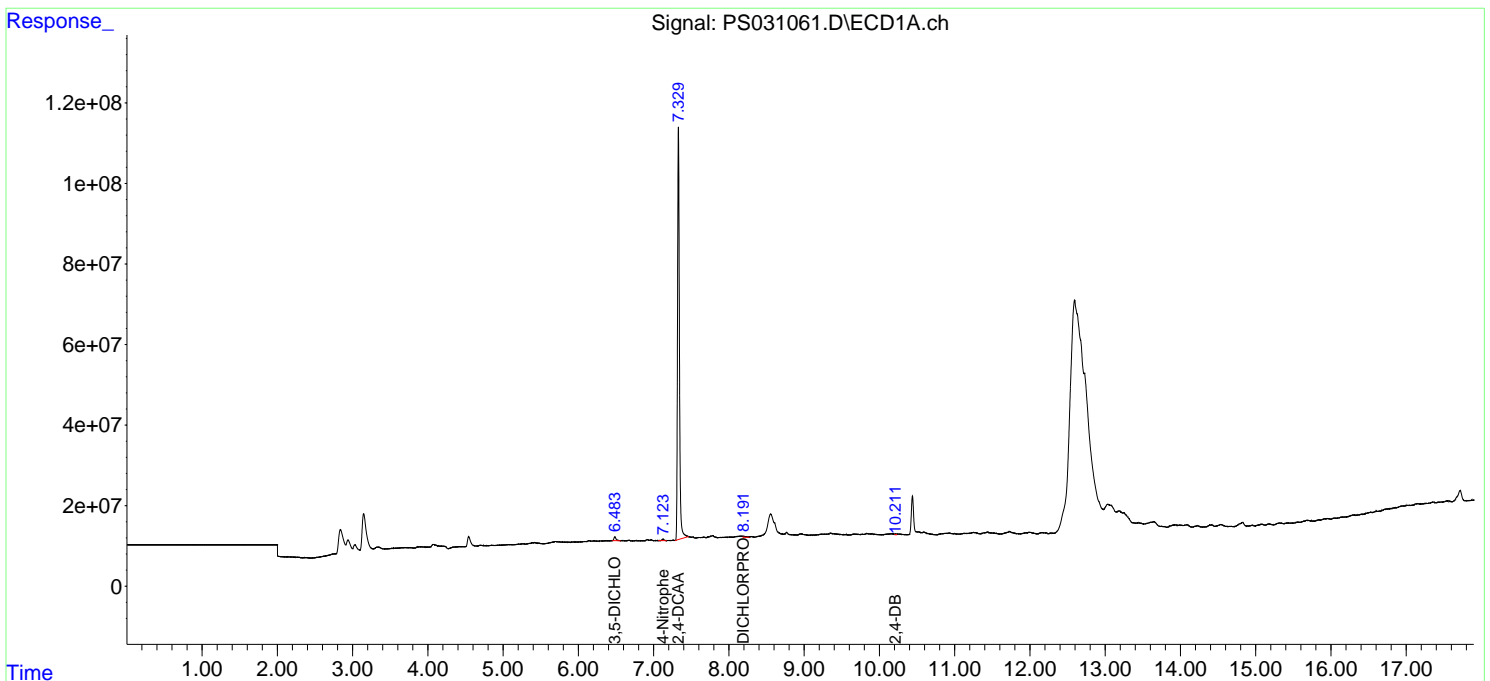
(f)=RT Delta > 1/2 Window (#)=Amounts differ by > 25% (m)=manual int.

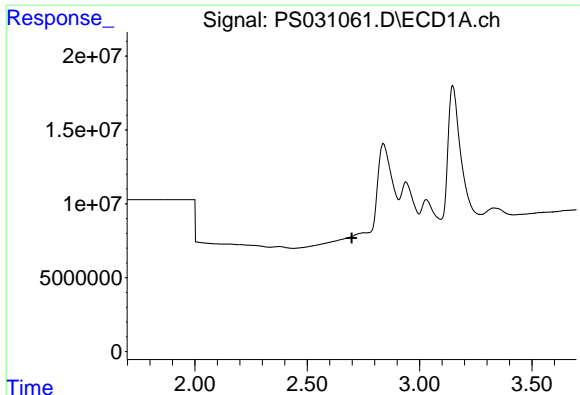
Data Path : Z:\pestpcbsrv\HPCHEM1\ECD_S\Data\PS071525\
Data File : PS031061.D
Signal(s) : Signal #1: ECD1A.ch Signal #2: ECD2B.ch
Acq On : 16 Jul 2025 06:50
Operator : AR\AJ
Sample : I.BLK
Misc :
ALS Vial : 2 Sample Multiplier: 1

Instrument :
ECD_S
ClientSampleId :
I.BLK

Integration File signal 1: autoint1.e
Integration File signal 2: autoint2.e
Quant Time: Jul 16 07:22:26 2025
Quant Method : Z:\pestpcbsrv\HPCHEM1\ECD_S\Method\PS071125.M
Quant Title : 8080.M
QLast Update : Mon Jul 14 05:51:06 2025
Response via : Initial Calibration
Integrator: ChemStation

Volume Inj. : 1 µl
Signal #1 Phase : ZB-MR1 Signal #2 Phase: ZB-MR2
Signal #1 Info : 30M x 0.32mm x0.5 Signal #2 Info : 30M x 0.32mm x 0.25µm

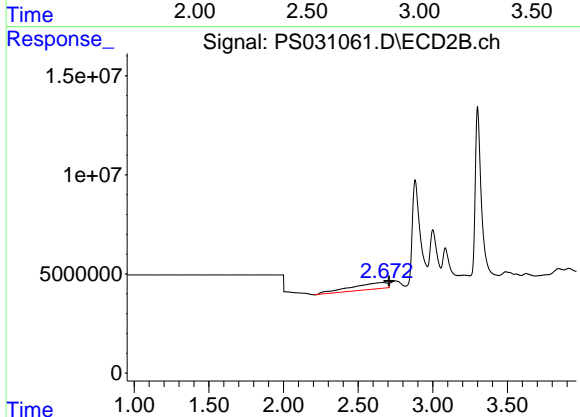




#1 Dalapon

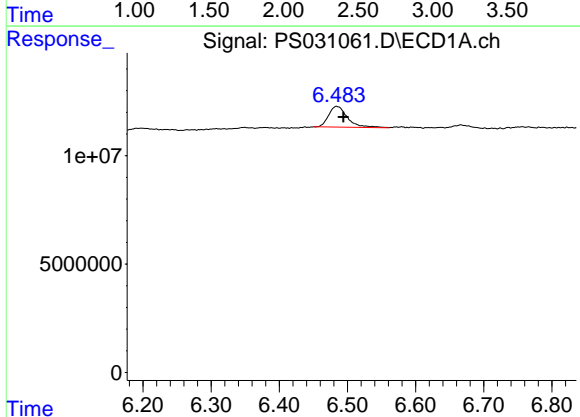
R.T.: 0.000 min
 Exp R.T.: 2.698 min
 Response: 0
 Conc: N.D.

Instrument :
 ECD_S
 ClientSampleId :
 I.BLK



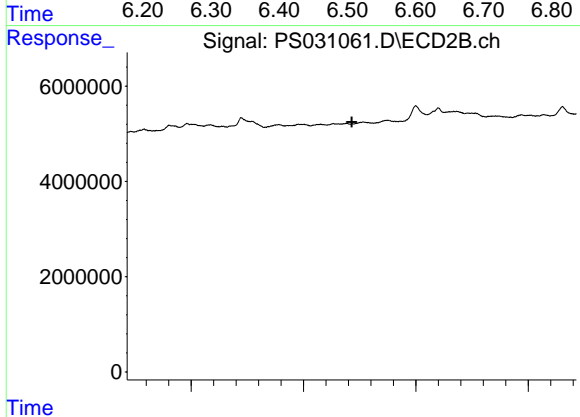
#1 Dalapon

R.T.: 2.672 min
 Delta R.T.: -0.037 min
 Response: 55794850
 Conc: 19.63 ng/ml



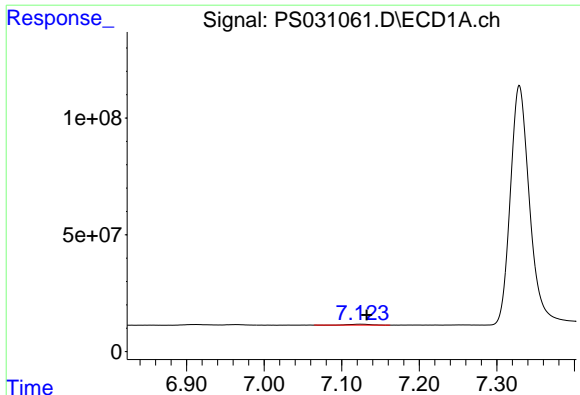
#2 3,5-DICHLOROBENZOIC ACID

R.T.: 6.484 min
 Delta R.T.: -0.010 min
 Response: 18390743
 Conc: 3.51 ng/ml



#2 3,5-DICHLOROBENZOIC ACID

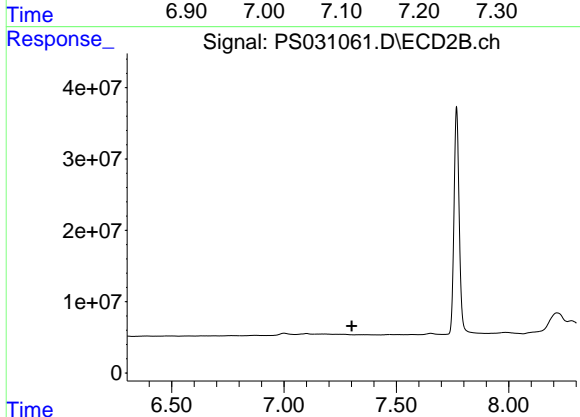
R.T.: 0.000 min
 Exp R.T.: 6.715 min
 Response: 0
 Conc: N.D.



#3 4-Nitrophenol

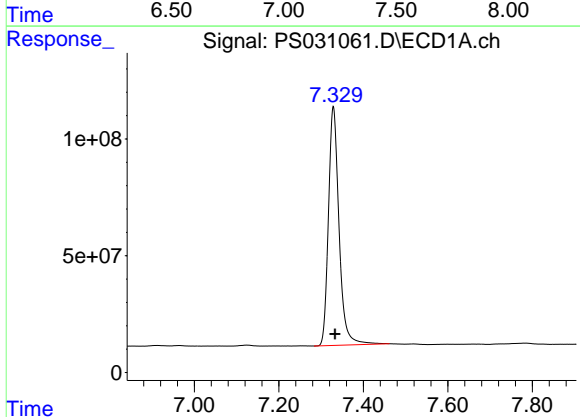
R.T.: 7.124 min
 Delta R.T.: -0.008 min
 Response: 7056281
 Conc: 5.23 ng/ml

Instrument :
 ECD_S
 ClientSampleId :
 I.BLK



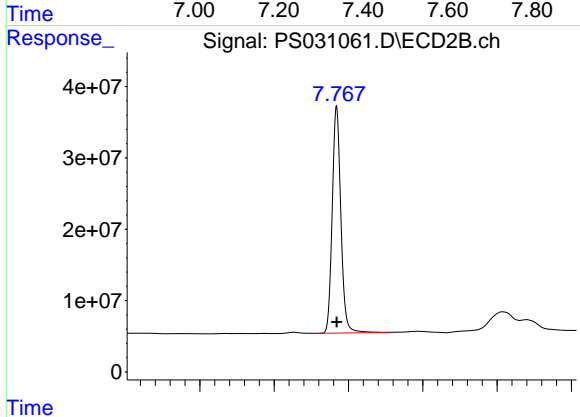
#3 4-Nitrophenol

R.T.: 0.000 min
 Exp R.T. : 7.301 min
 Response: 0
 Conc: N.D.



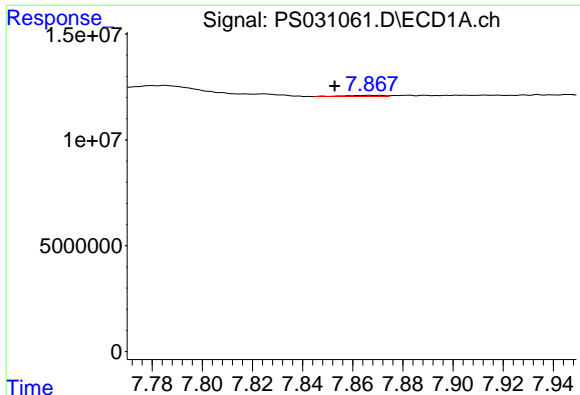
#4 2,4-DCAA

R.T.: 7.329 min
 Delta R.T.: -0.004 min
 Response: 1781515667
 Conc: 450.44 ng/ml



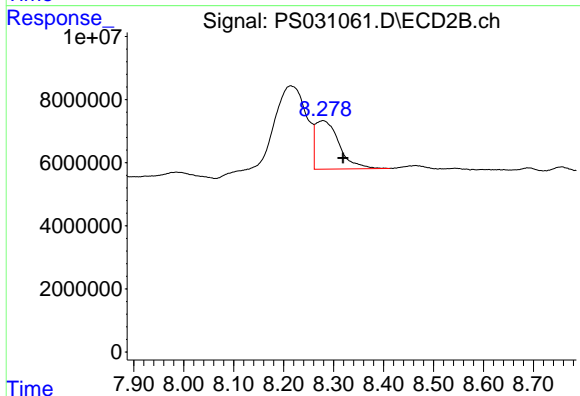
#4 2,4-DCAA

R.T.: 7.768 min
 Delta R.T.: 0.000 min
 Response: 513608443
 Conc: 495.75 ng/ml

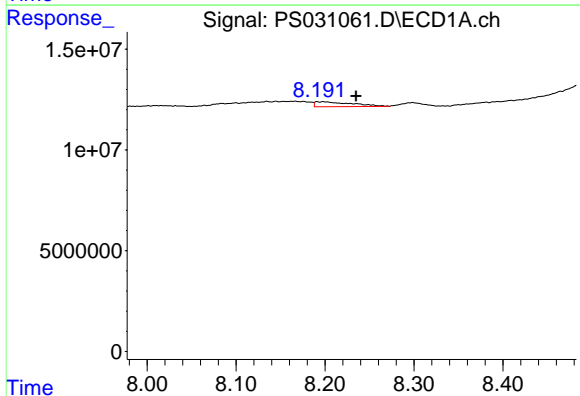


#7 MCPA
 R.T.: 7.867 min
 Delta R.T.: 0.014 min
 Response: 583648
 Conc: N.D.

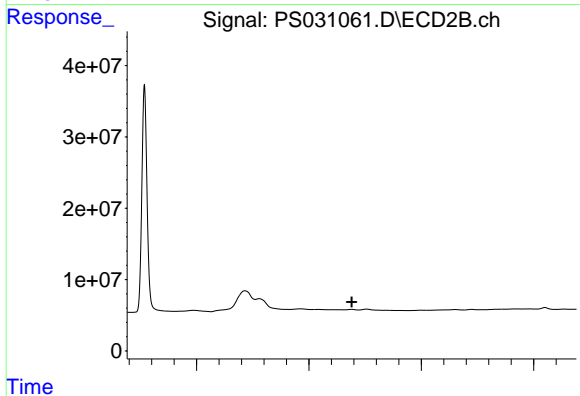
Instrument :
 ECD_S
 ClientSampleId :
 I.BLK



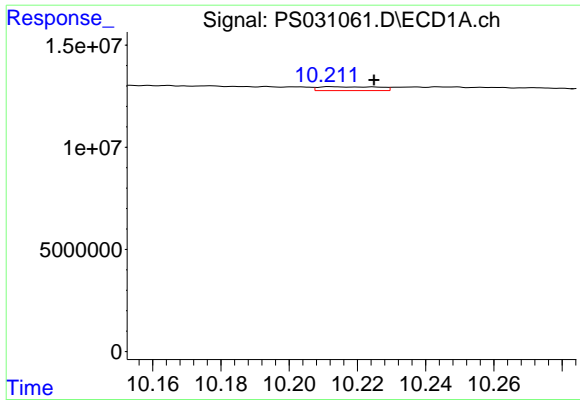
#7 MCPA
 R.T.: 8.279 min
 Delta R.T.: -0.040 min
 Response: 50389395
 Conc: 15.72 ug/ml



#8 DICHLORPROP
 R.T.: 8.191 min
 Delta R.T.: -0.043 min
 Response: 7095007
 Conc: 2.08 ng/ml

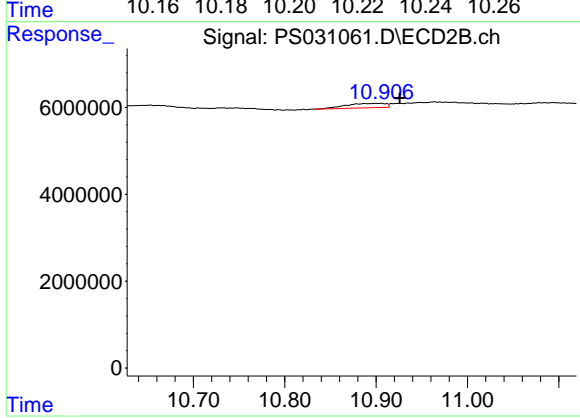


#8 DICHLORPROP
 R.T.: 0.000 min
 Exp R.T.: 8.691 min
 Response: 0
 Conc: N.D.



#13 2,4-DB
 R.T.: 10.212 min
 Delta R.T.: -0.012 min
 Response: 2309775
 Conc: 1.06 ng/ml

Instrument :
 ECD_S
 ClientSampleId :
 I.BLK



#13 2,4-DB
 R.T.: 10.902 min
 Delta R.T.: -0.024 min
 Response: 3088897
 Conc: 2.61 ng/ml