

Data Path : Z:\pestpcbsrv\HPCHEM1\ECD\_S\Data\PS071525\  
 Data File : PS031062.D  
 Signal(s) : Signal #1: ECD1A.ch Signal #2: ECD2B.ch  
 Acq On : 16 Jul 2025 07:14  
 Operator : AR\AJ  
 Sample : HSTDCCC750  
 Misc :  
 ALS Vial : 3 Sample Multiplier: 1

Instrument :  
 ECD\_S  
 ClientSampleId :  
 HSTDCCC750

Integration File signal 1: autoint1.e  
 Integration File signal 2: autoint2.e  
 Quant Time: Jul 16 07:52:12 2025  
 Quant Method : Z:\pestpcbsrv\HPCHEM1\ECD\_S\Method\PS071125.M  
 Quant Title : 8080.M  
 QLast Update : Mon Jul 14 05:51:06 2025  
 Response via : Initial Calibration  
 Integrator: ChemStation

Volume Inj. : 1 µl  
 Signal #1 Phase : ZB-MR1 Signal #2 Phase: ZB-MR2  
 Signal #1 Info : 30M x 0.32mm x0.5 Signal #2 Info : 30M x 0.32mm x 0.25µm

Compound	RT#1	RT#2	Resp#1	Resp#2	ng/ml	ng/ml
-----						
System Monitoring Compounds						
4) S 2,4-DCAA	7.328	7.767	2779.8E6	710.7E6	702.842	685.951
Target Compounds						
1) T Dalapon	2.695	2.706	3725.3E6	1737.8E6	611.539	611.271
2) T 3,5-DICHL...	6.491	6.714	3624.5E6	983.8E6	691.891	634.603
3) T 4-Nitroph...	7.128	7.300	1140.8E6	1136.2E6	845.062	651.526
5) T DICAMBA	7.518	7.968	9431.3E6	4182.8E6	601.065	645.846
6) T MCPP	7.698	8.068	596.0E6	129.0E6	64.775	60.326
7) T MCPA	7.848	8.316	822.1E6	205.6E6	75.378	64.140
8) T DICHLORPROP	8.229	8.688	2735.7E6	1094.9E6	803.394	720.692
9) T 2,4-D	8.461	9.024	2816.5E6	1299.9E6	914.909	764.899
10) T Pentachlo...	8.767	9.547	33770.0E6	26975.0E6	671.884	700.013
11) T 2,4,5-TP ...	9.346	9.928	14947.9E6	10185.9E6	803.188	694.060
12) T 2,4,5-T	9.641	10.355	13064.0E6	9153.3E6	858.720	654.186
13) T 2,4-DB	10.219	10.923	1587.0E6	772.3E6	731.071	652.714
14) T DINOSEB	11.432	11.307	10269.5E6	7469.7E6	778.945	658.032
15) T Picloram	11.244	12.417	14416.8E6	16694.6E6	989.350	710.994 #
16) T DCPA	11.729	12.351	19037.0E6	15174.6E6	795.289	672.873
-----						

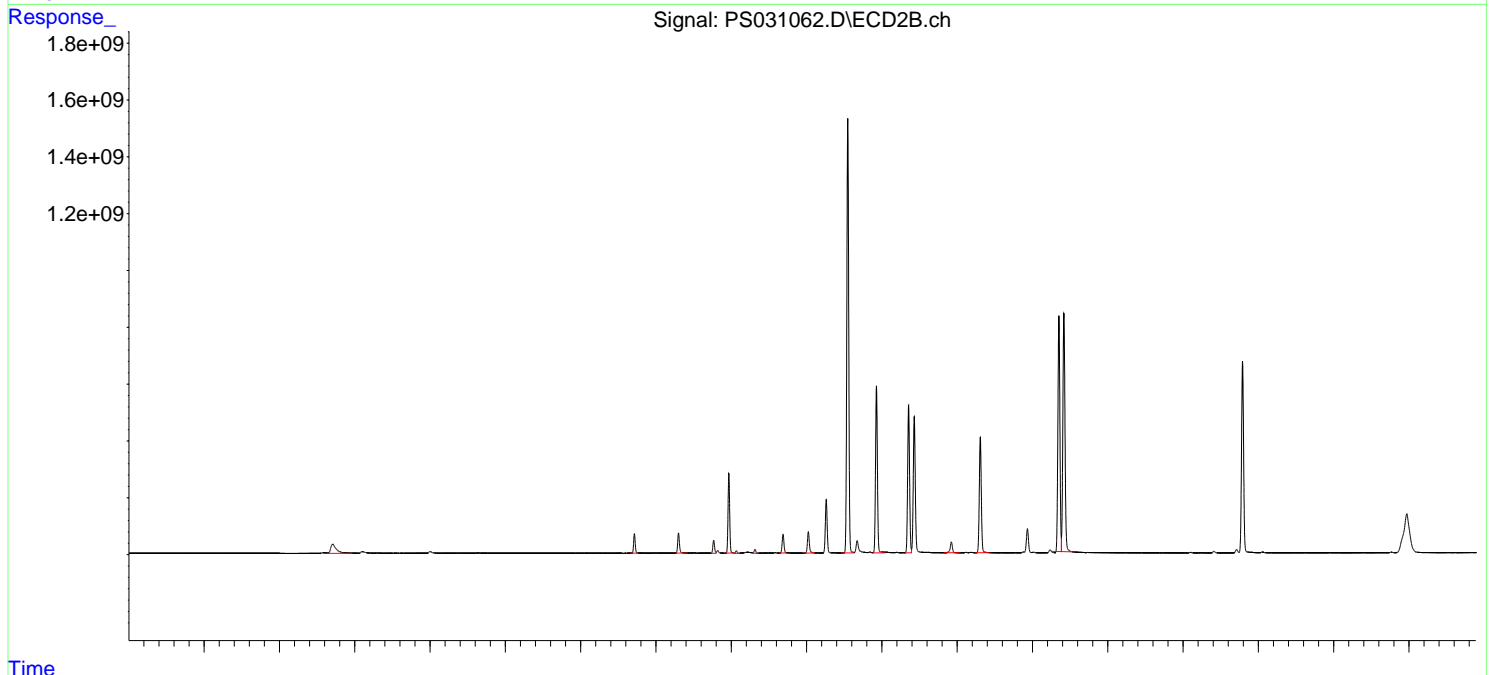
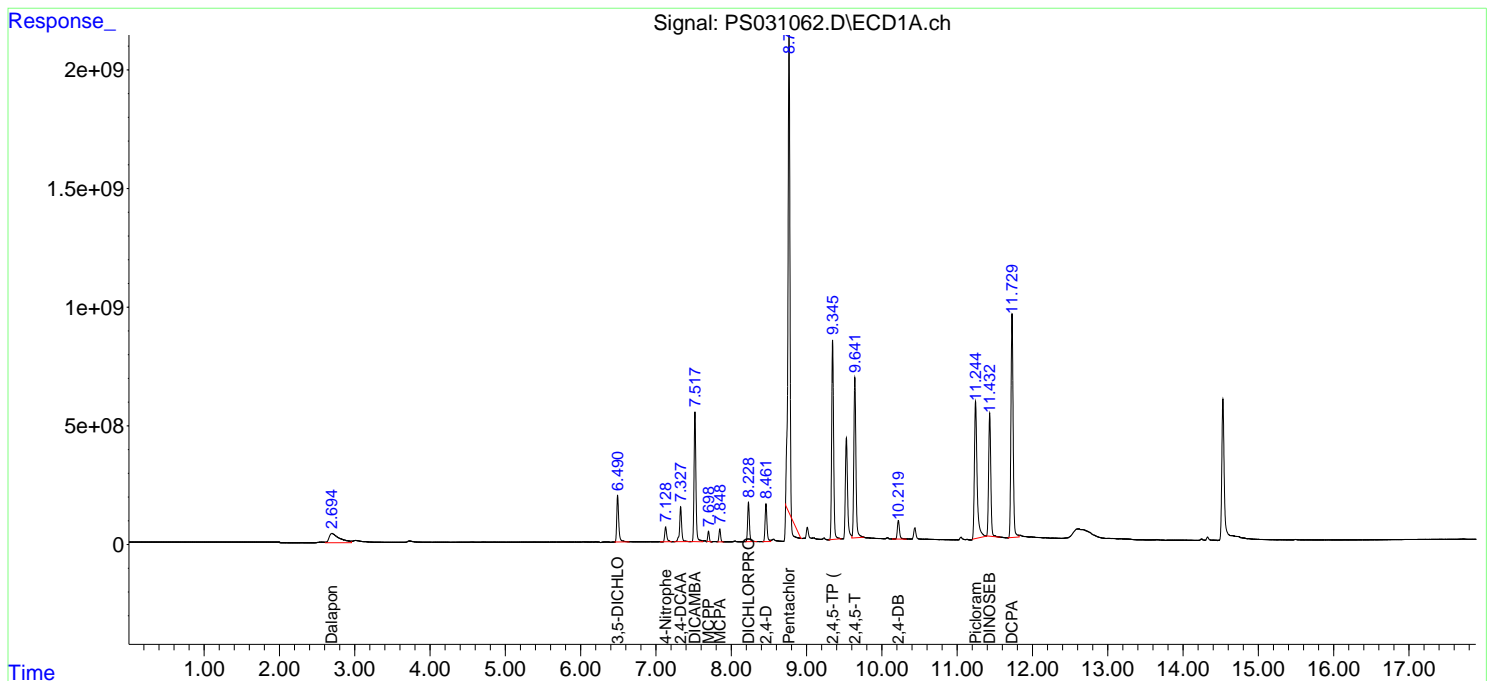
(f)=RT Delta > 1/2 Window (#)=Amounts differ by > 25% (m)=manual int.

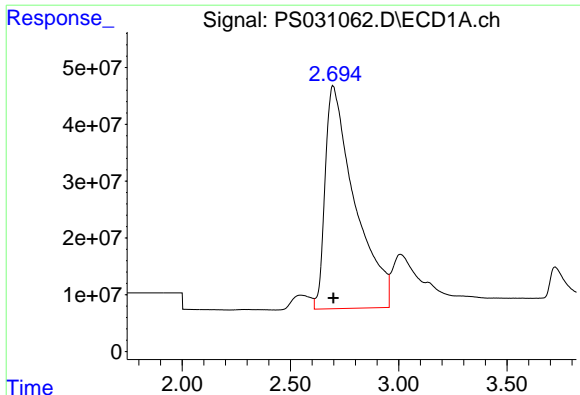
Data Path : Z:\pestpcbsrv\HPCHEM1\ECD\_S\Data\PS071525\  
 Data File : PS031062.D  
 Signal(s) : Signal #1: ECD1A.ch Signal #2: ECD2B.ch  
 Acq On : 16 Jul 2025 07:14  
 Operator : AR\AJ  
 Sample : HSTDCCC750  
 Misc :  
 ALS Vial : 3 Sample Multiplier: 1

**Instrument :**  
 ECD\_S  
**ClientSampleId :**  
 HSTDCCC750

Integration File signal 1: autoint1.e  
 Integration File signal 2: autoint2.e  
 Quant Time: Jul 16 07:52:12 2025  
 Quant Method : Z:\pestpcbsrv\HPCHEM1\ECD\_S\Method\PS071125.M  
 Quant Title : 8080.M  
 QLast Update : Mon Jul 14 05:51:06 2025  
 Response via : Initial Calibration  
 Integrator: ChemStation

Volume Inj. : 1 µl  
 Signal #1 Phase : ZB-MR1 Signal #2 Phase: ZB-MR2  
 Signal #1 Info : 30M x 0.32mm x 0.5 Signal #2 Info : 30M x 0.32mm x 0.25µm

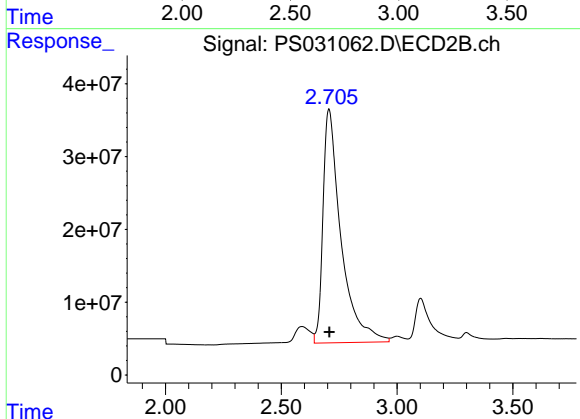




#1 Dalapon

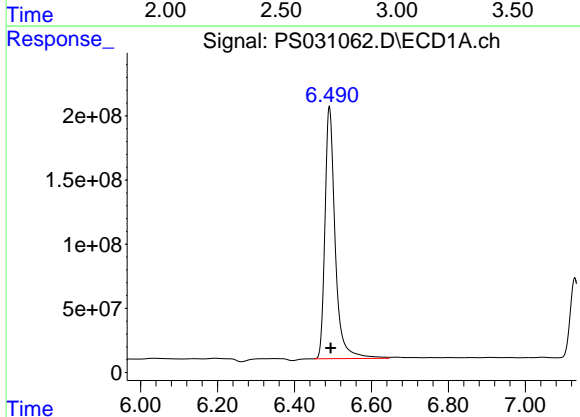
R.T.: 2.695 min  
 Delta R.T.: -0.003 min  
 Response: 3725326518  
 Conc: 611.54 ng/ml

Instrument :  
 ECD\_S  
 ClientSampleId :  
 HSTDCCC750



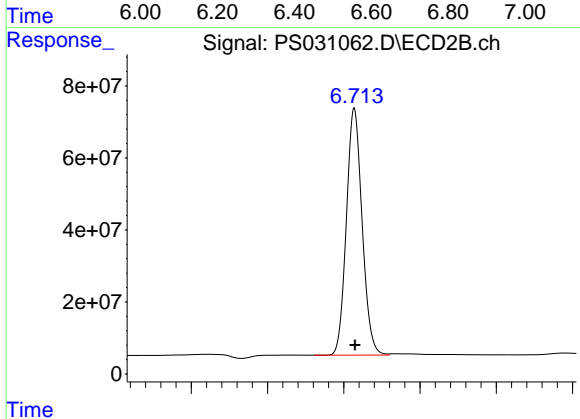
#1 Dalapon

R.T.: 2.706 min  
 Delta R.T.: -0.003 min  
 Response: 1737757894  
 Conc: 611.27 ng/ml



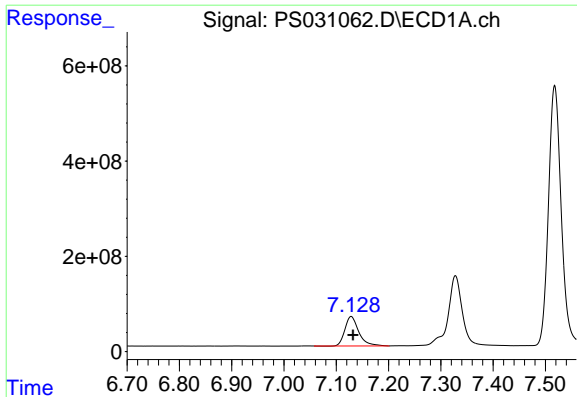
#2 3,5-DICHLOROBENZOIC ACID

R.T.: 6.491 min  
 Delta R.T.: -0.003 min  
 Response: 3624541031  
 Conc: 691.89 ng/ml



#2 3,5-DICHLOROBENZOIC ACID

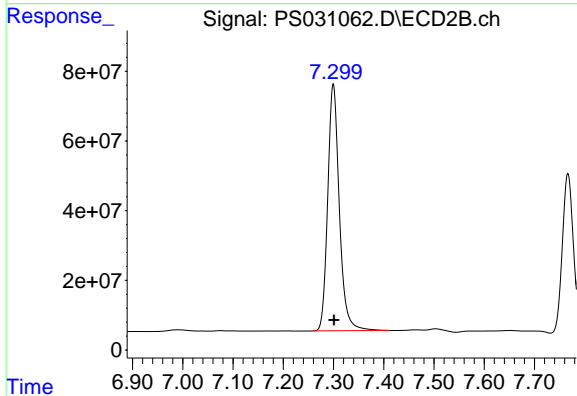
R.T.: 6.714 min  
 Delta R.T.: -0.001 min  
 Response: 983849051  
 Conc: 634.60 ng/ml



#3 4-Nitrophenol

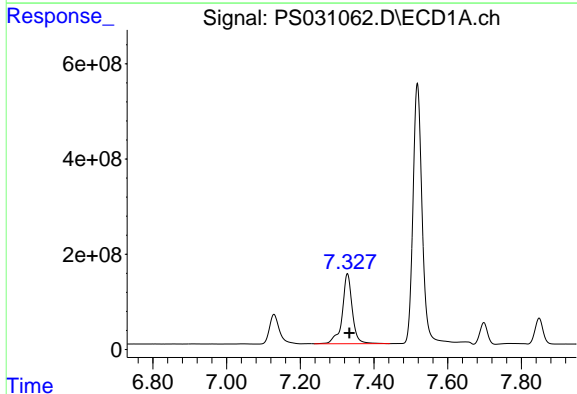
R.T.: 7.128 min  
 Delta R.T.: -0.004 min  
 Response: 1140840252  
 Conc: 845.06 ng/ml

Instrument :  
 ECD\_S  
 ClientSampleId :  
 HSTDCCC750



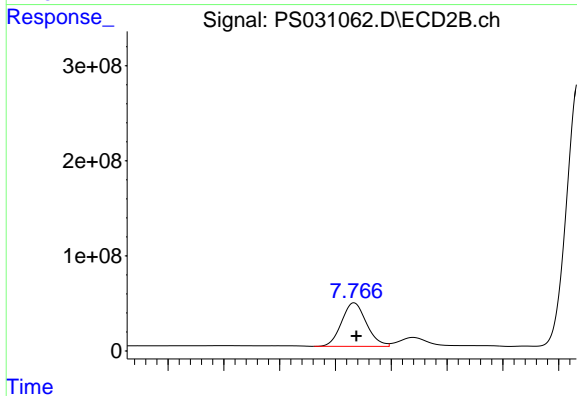
#3 4-Nitrophenol

R.T.: 7.300 min  
 Delta R.T.: -0.002 min  
 Response: 1136189637  
 Conc: 651.53 ng/ml



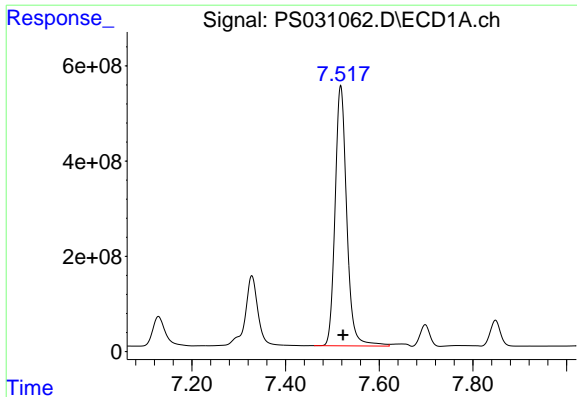
#4 2,4-DCAA

R.T.: 7.328 min  
 Delta R.T.: -0.005 min  
 Response: 2779793549  
 Conc: 702.84 ng/ml



#4 2,4-DCAA

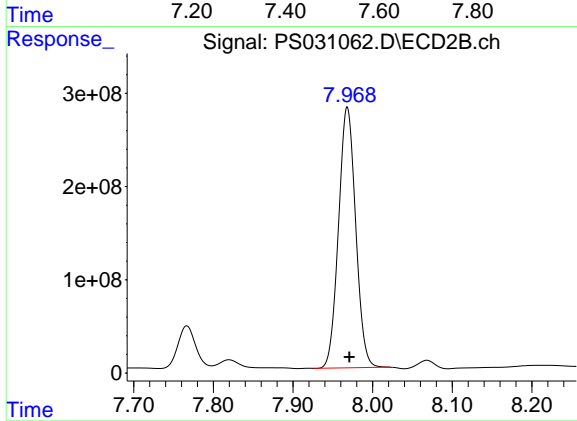
R.T.: 7.767 min  
 Delta R.T.: -0.002 min  
 Response: 710668082  
 Conc: 685.95 ng/ml



#5 DICAMBA

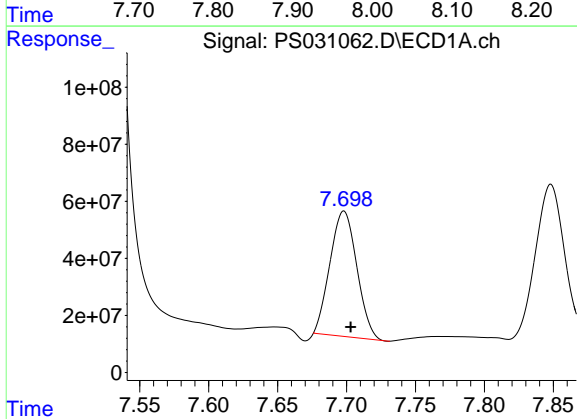
R.T.: 7.518 min  
 Delta R.T.: -0.005 min  
 Response: 9431257852  
 Conc: 601.06 ng/ml

Instrument :  
 ECD\_S  
 ClientSampleId :  
 HSTDCCC750



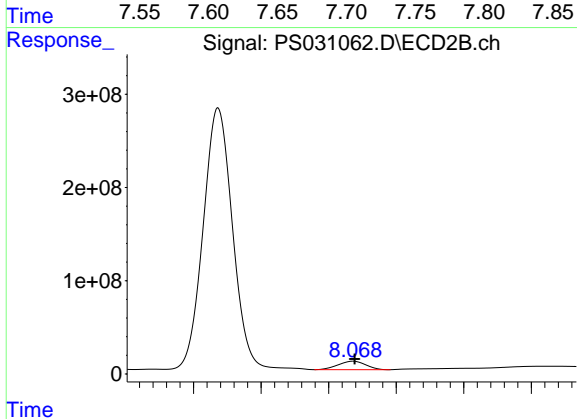
#5 DICAMBA

R.T.: 7.968 min  
 Delta R.T.: -0.002 min  
 Response: 4182770090  
 Conc: 645.85 ng/ml



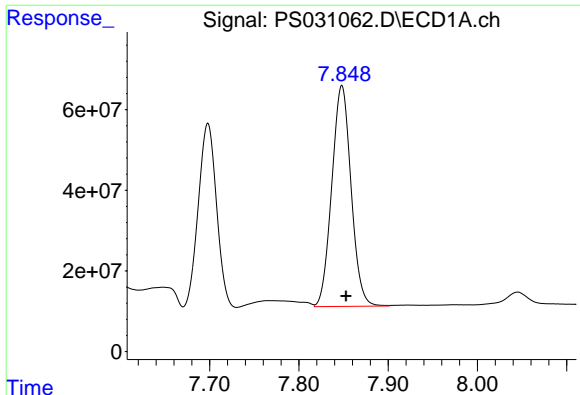
#6 MCP

R.T.: 7.698 min  
 Delta R.T.: -0.005 min  
 Response: 596017559  
 Conc: 64.78 ug/ml



#6 MCP

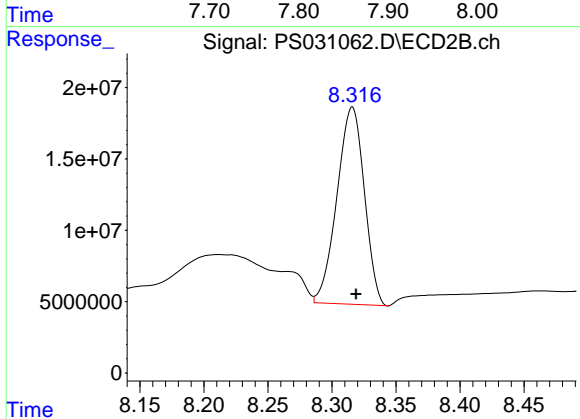
R.T.: 8.068 min  
 Delta R.T.: -0.001 min  
 Response: 128974225  
 Conc: 60.33 ug/ml



#7 MCPA

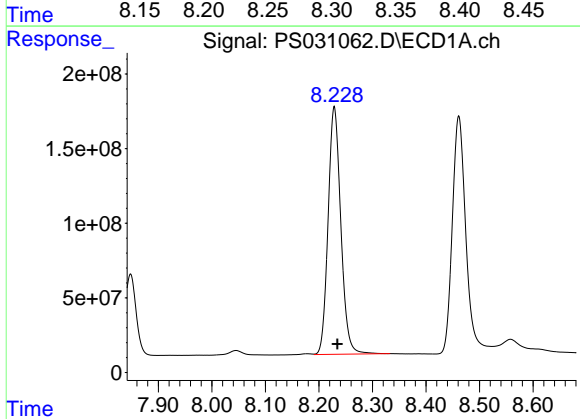
R.T.: 7.848 min  
 Delta R.T.: -0.005 min  
 Response: 822128437  
 Conc: 75.38 ug/ml

Instrument :  
 ECD\_S  
 ClientSampleId :  
 HSTDCCC750



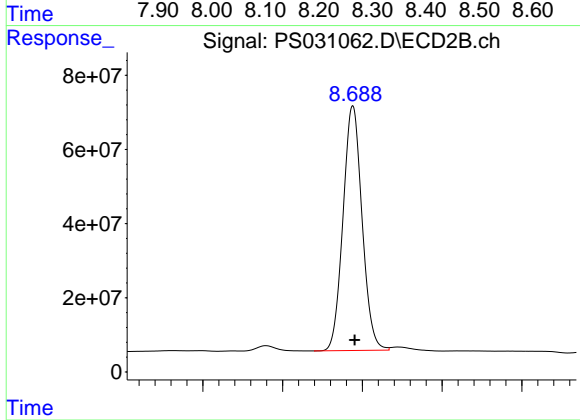
#7 MCPA

R.T.: 8.316 min  
 Delta R.T.: -0.003 min  
 Response: 205610195  
 Conc: 64.14 ug/ml



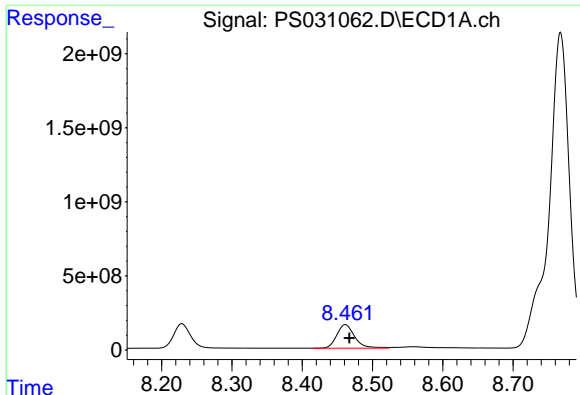
#8 DICHLORPROP

R.T.: 8.229 min  
 Delta R.T.: -0.006 min  
 Response: 2735681528  
 Conc: 803.39 ng/ml



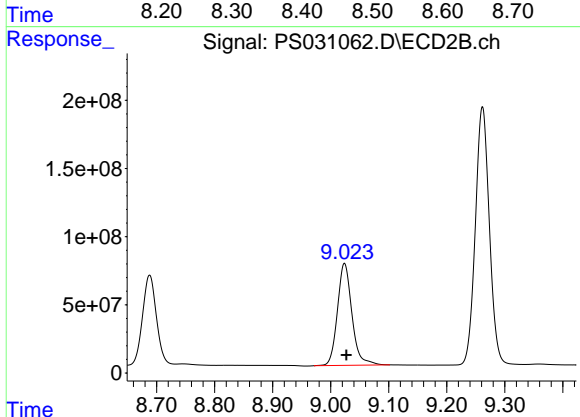
#8 DICHLORPROP

R.T.: 8.688 min  
 Delta R.T.: -0.003 min  
 Response: 1094919008  
 Conc: 720.69 ng/ml

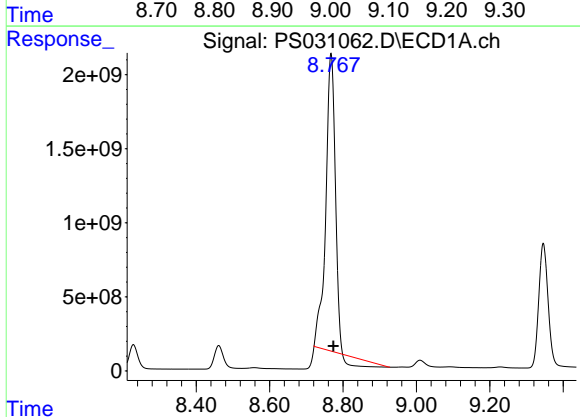


#9 2,4-D  
 R.T.: 8.461 min  
 Delta R.T.: -0.006 min  
 Response: 2816487467  
 Conc: 914.91 ng/ml

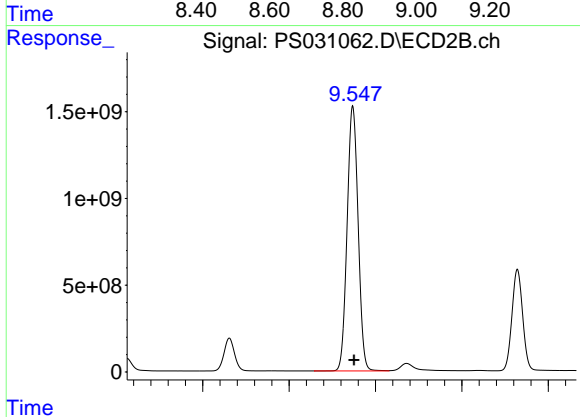
Instrument :  
 ECD\_S  
 ClientSampleId :  
 HSTDCCC750



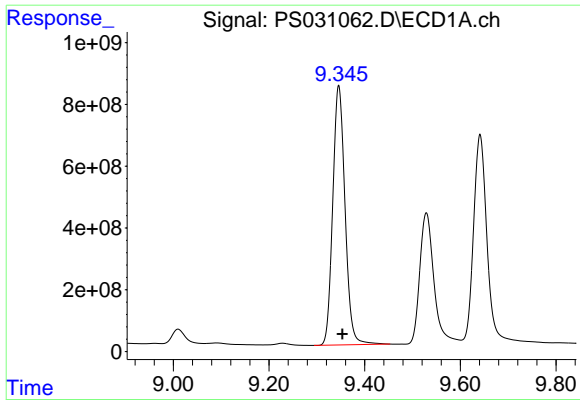
#9 2,4-D  
 R.T.: 9.024 min  
 Delta R.T.: -0.003 min  
 Response: 1299918693  
 Conc: 764.90 ng/ml



#10 Pentachlorophenol  
 R.T.: 8.767 min  
 Delta R.T.: -0.006 min  
 Response: 33769960357  
 Conc: 671.88 ng/ml



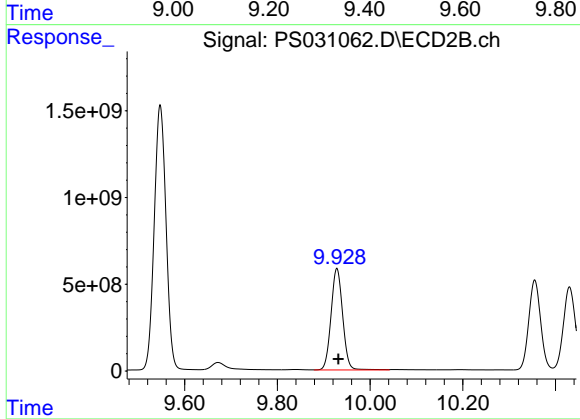
#10 Pentachlorophenol  
 R.T.: 9.547 min  
 Delta R.T.: -0.003 min  
 Response: 26975043629  
 Conc: 700.01 ng/ml



#11 2,4,5-TP (SILVEX)

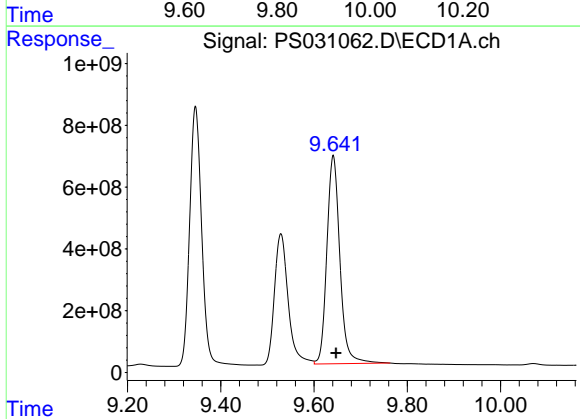
R.T.: 9.346 min  
 Delta R.T.: -0.007 min  
 Response: 14947912740  
 Conc: 803.19 ng/ml

Instrument :  
 ECD\_S  
 ClientSampleId :  
 HSTDCCC750



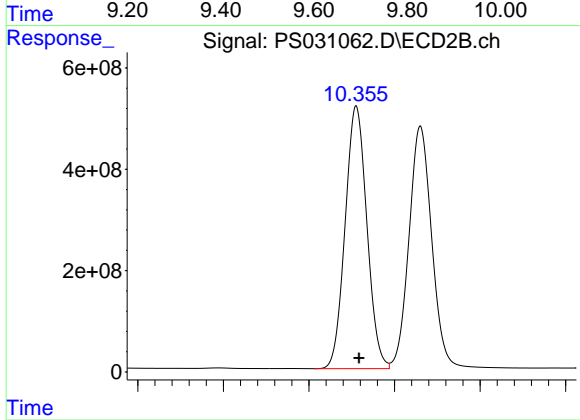
#11 2,4,5-TP (SILVEX)

R.T.: 9.928 min  
 Delta R.T.: -0.003 min  
 Response: 10185873184  
 Conc: 694.06 ng/ml



#12 2,4,5-T

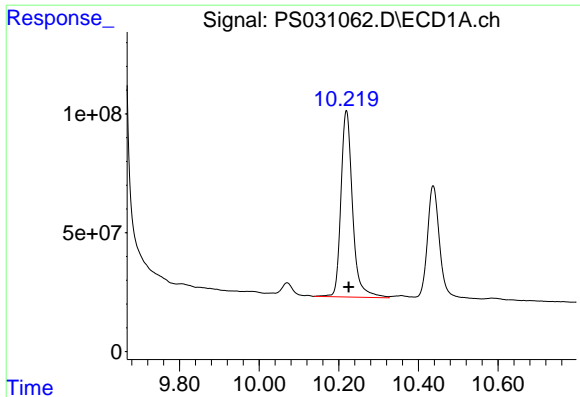
R.T.: 9.641 min  
 Delta R.T.: -0.006 min  
 Response: 13063980930  
 Conc: 858.72 ng/ml



#12 2,4,5-T

R.T.: 10.355 min  
 Delta R.T.: -0.003 min  
 Response: 9153251857  
 Conc: 654.19 ng/ml

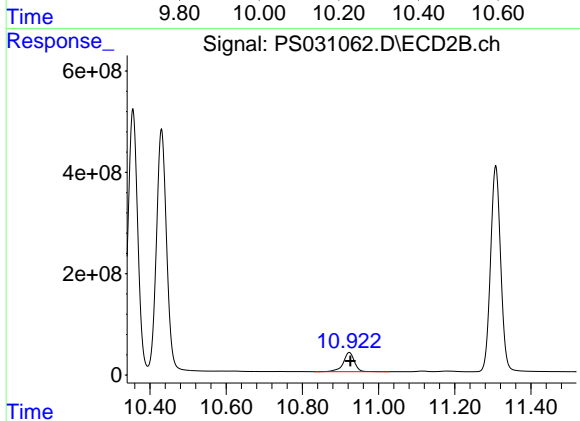




#13 2,4-DB

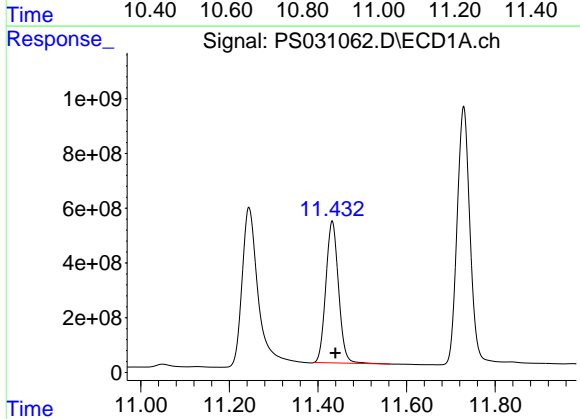
R.T.: 10.219 min  
 Delta R.T.: -0.006 min  
 Response: 1587001771  
 Conc: 731.07 ng/ml

Instrument :  
 ECD\_S  
 ClientSampleId :  
 HSTDCCC750



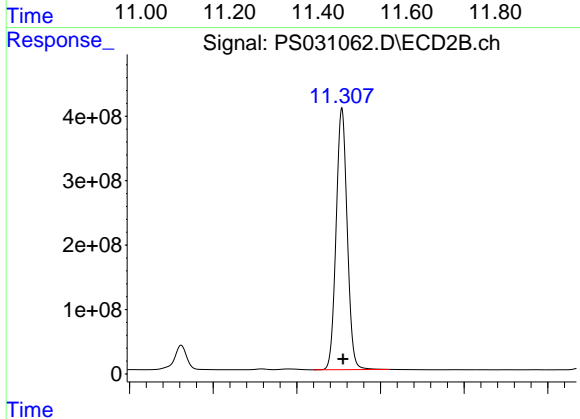
#13 2,4-DB

R.T.: 10.923 min  
 Delta R.T.: -0.003 min  
 Response: 772278894  
 Conc: 652.71 ng/ml



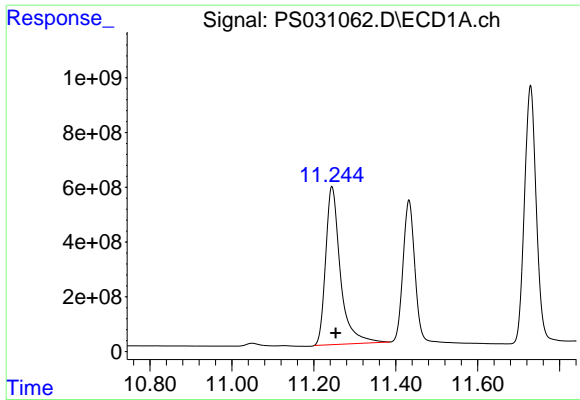
#14 DINOSEB

R.T.: 11.432 min  
 Delta R.T.: -0.007 min  
 Response: 10269530827  
 Conc: 778.94 ng/ml



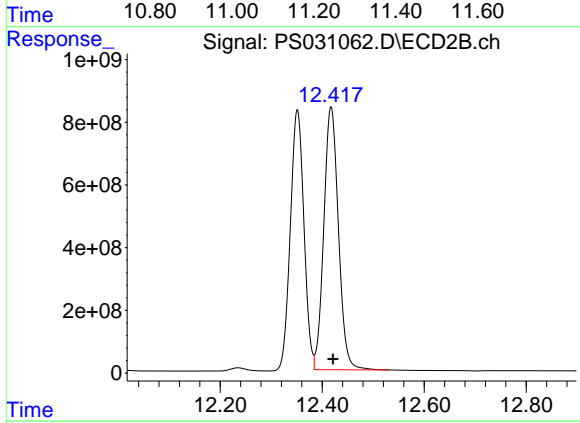
#14 DINOSEB

R.T.: 11.307 min  
 Delta R.T.: -0.003 min  
 Response: 7469661453  
 Conc: 658.03 ng/ml

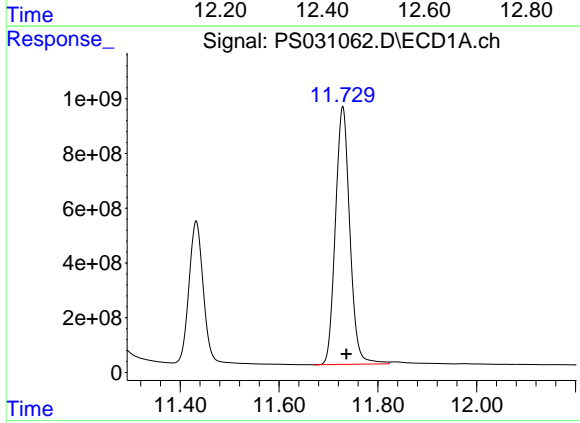


#15 Picloram  
 R.T.: 11.244 min  
 Delta R.T.: -0.009 min  
 Response: 14416752728  
 Conc: 989.35 ng/ml

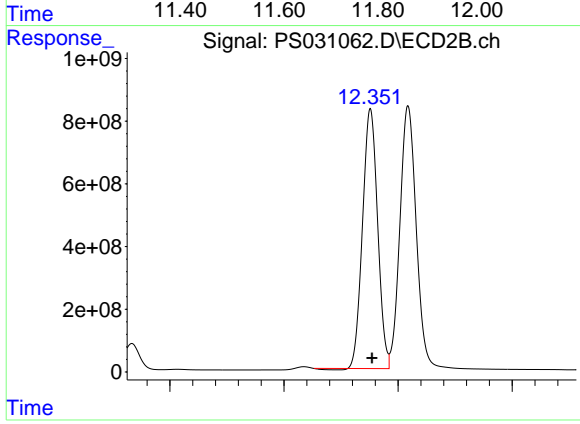
Instrument :  
 ECD\_S  
 ClientSampleId :  
 HSTDCCC750



#15 Picloram  
 R.T.: 12.417 min  
 Delta R.T.: -0.004 min  
 Response: 16694599943  
 Conc: 710.99 ng/ml



#16 DCPA  
 R.T.: 11.729 min  
 Delta R.T.: -0.007 min  
 Response: 19036975362  
 Conc: 795.29 ng/ml



#16 DCPA  
 R.T.: 12.351 min  
 Delta R.T.: -0.003 min  
 Response: 15174620663  
 Conc: 672.87 ng/ml