

Data Path : Z:\pestpcbsrv\HPCHEM1\ECD\_S\Data\PS071525\  
 Data File : PS031063.D  
 Signal(s) : Signal #1: ECD1A.ch Signal #2: ECD2B.ch  
 Acq On : 16 Jul 2025 10:34  
 Operator : AR\AJ  
 Sample : Q2578-03  
 Misc :  
 ALS Vial : 38 Sample Multiplier: 1

Instrument :  
 ECD\_S  
 ClientSampleId :

Integration File signal 1: autoint1.e  
 Integration File signal 2: autoint2.e  
 Quant Time: Jul 16 11:23:55 2025  
 Quant Method : Z:\pestpcbsrv\HPCHEM1\ECD\_S\Method\PS071125.M  
 Quant Title : 8080.M  
 QLast Update : Mon Jul 14 05:51:06 2025  
 Response via : Initial Calibration  
 Integrator: ChemStation

Volume Inj. : 1 µl  
 Signal #1 Phase : ZB-MR2 Signal #2 Phase: ZB-MR2  
 Signal #1 Info : 30M x 0.32mm x0.5 Signal #2 Info : 30M x 0.32mm x 0.25µm

Compound	RT#1	RT#2	Resp#1	Resp#2	ng/ml	ng/ml
-----						
System Monitoring Compounds						
4) S 2,4-DCAA	7.329	7.765	2318.7E6	529.9E6	586.249	511.442
Target Compounds						
1) T Dalapon	0.000	2.707	0	3196.8E6	N.D.	1124.514
2) T 3,5-DICHL...	6.506	6.724	174.6E6	122.6E6	33.324	79.066 #
3) T 4-Nitroph...	7.153	7.301	48835444	7569717	36.174	4.341 #
5) T DICAMBA	7.532	7.969	-322306	132.3E6	N.D.	20.429
6) T MCPP	7.696	8.074	40358309	47145777	4.386	22.052 #
7) T MCPA	7.809f	8.301	89556668	208.9E6	8.211	65.168 #
8) T DICHLORPROP	8.275f	8.658f	126.1E6	98013250	37.025	64.514 #
9) T 2,4-D	8.504f	9.044	472.4E6	73595683	153.454	43.305 #
10) T Pentachlo...	8.771	9.592f	38777670	406.2E6	<MDL	10.542 #
11) T 2,4,5-TP ...	9.355	9.910	440.4E6	1087.0E6	23.663	74.064 #
12) T 2,4,5-T	9.621f	0.000	36124425	0	2.375	N.D. #
13) T 2,4-DB	10.215	10.879f	71736010	211.2E6	33.046	178.482 #
14) T DINOSEB	11.445	11.318	-33602040	609.1E6	N.D.	53.660
15) T Picloram	11.226f	12.430	95473101	402.9E6	6.552	17.158 #
16) T DCPA	11.701f	12.362	20223757	53950111	<MDL	2.392 #
-----						

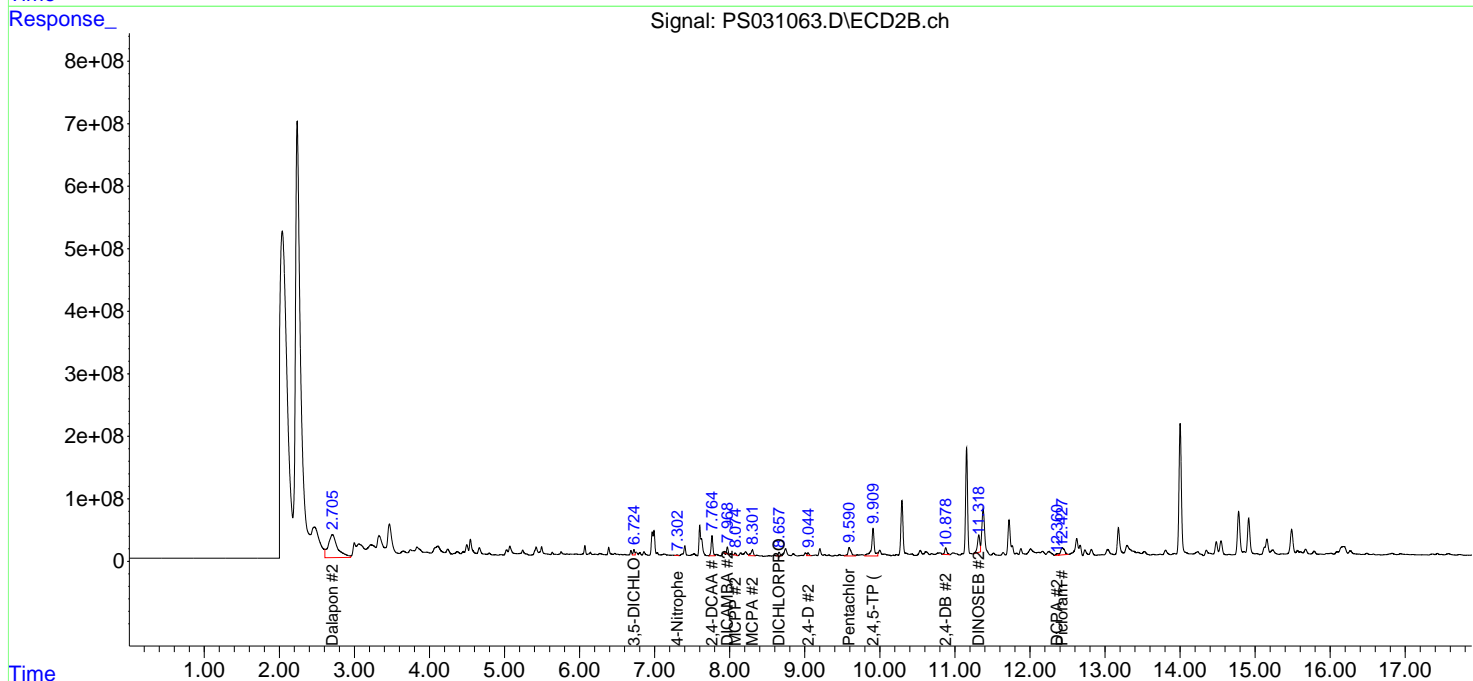
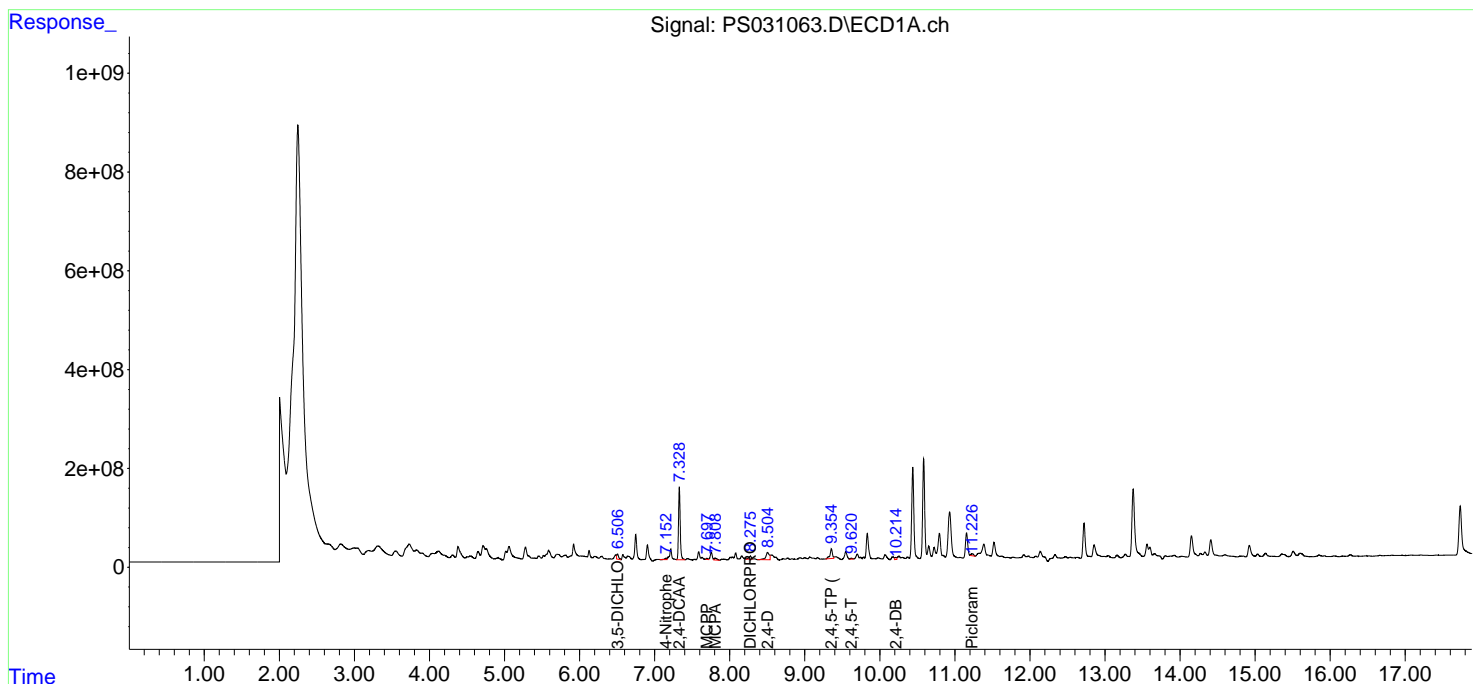
(f)=RT Delta > 1/2 Window (#)=Amounts differ by > 25% (m)=manual int.

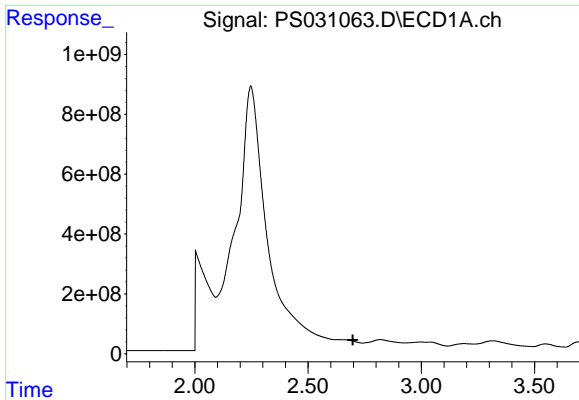
Data Path : Z:\pestpcbsrv\HPCHEM1\ECD\_S\Data\PS071525\  
 Data File : PS031063.D  
 Signal(s) : Signal #1: ECD1A.ch Signal #2: ECD2B.ch  
 Acq On : 16 Jul 2025 10:34  
 Operator : AR\AJ  
 Sample : Q2578-03  
 Misc :  
 ALS Vial : 38 Sample Multiplier: 1

Instrument :  
 ECD\_S  
 ClientSampleId :

Integration File signal 1: autoint1.e  
 Integration File signal 2: autoint2.e  
 Quant Time: Jul 16 11:23:55 2025  
 Quant Method : Z:\pestpcbsrv\HPCHEM1\ECD\_S\Method\PS071125.M  
 Quant Title : 8080.M  
 QLast Update : Mon Jul 14 05:51:06 2025  
 Response via : Initial Calibration  
 Integrator: ChemStation

Volume Inj. : 1 µl  
 Signal #1 Phase : ZB-MR1 Signal #2 Phase: ZB-MR2  
 Signal #1 Info : 30M x 0.32mm x0.5 Signal #2 Info : 30M x 0.32mm x 0.25µm

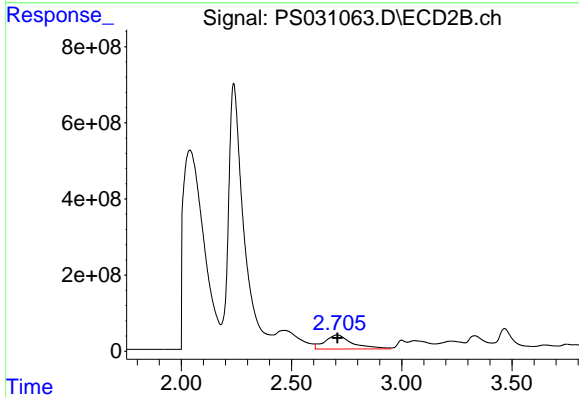




#1 Dalapon

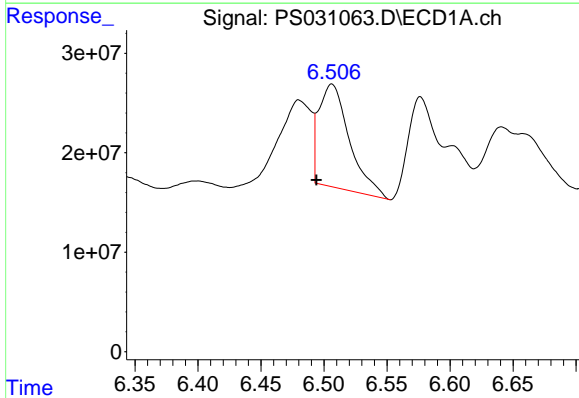
R.T.: 0.000 min  
 Exp R.T.: 2.698 min  
 Response: 0  
 Conc: N.D.

Instrument :  
 ECD\_S  
 ClientSampleId :



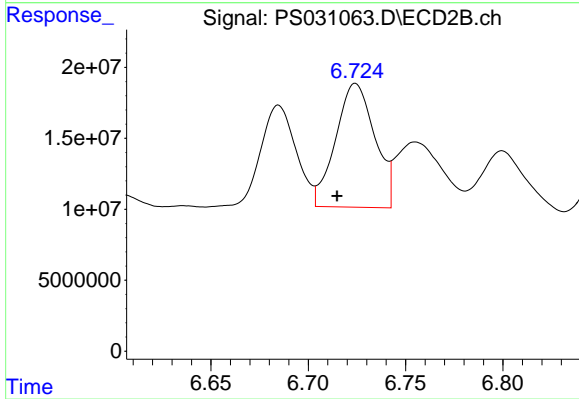
#1 Dalapon

R.T.: 2.707 min  
 Delta R.T.: -0.001 min  
 Response: 3196835602  
 Conc: 1124.51 ng/ml



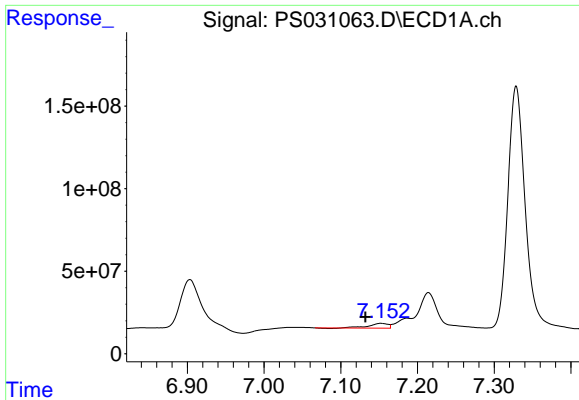
#2 3,5-DICHLOROBENZOIC ACID

R.T.: 6.506 min  
 Delta R.T.: 0.012 min  
 Response: 174569509  
 Conc: 33.32 ng/ml



#2 3,5-DICHLOROBENZOIC ACID

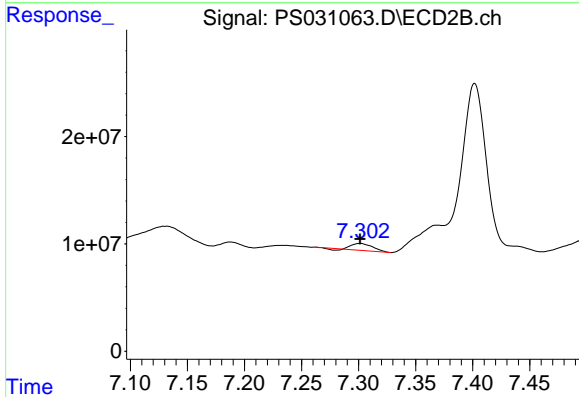
R.T.: 6.724 min  
 Delta R.T.: 0.010 min  
 Response: 122578555  
 Conc: 79.07 ng/ml



#3 4-Nitrophenol

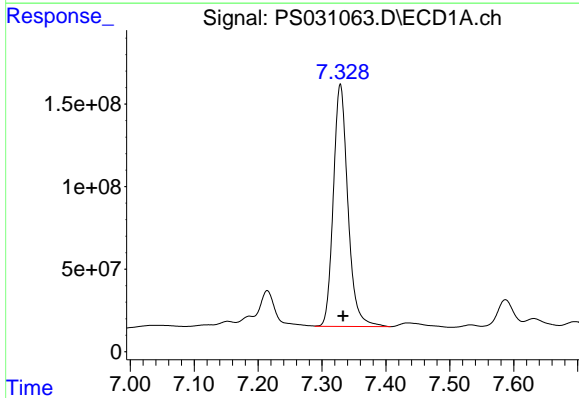
R.T.: 7.153 min  
 Delta R.T.: 0.020 min  
 Response: 48835444  
 Conc: 36.17 ng/ml

Instrument :  
 ECD\_S  
 ClientSampleId :



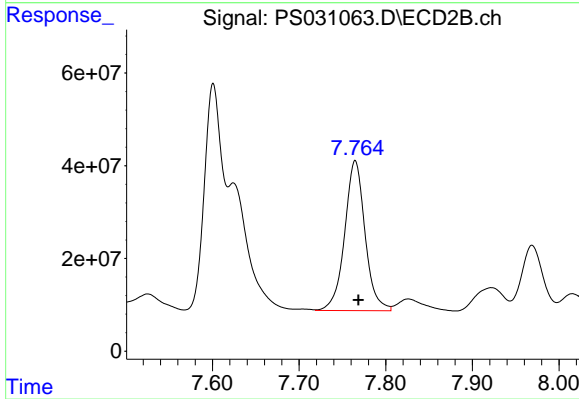
#3 4-Nitrophenol

R.T.: 7.301 min  
 Delta R.T.: 0.000 min  
 Response: 7569717  
 Conc: 4.34 ng/ml



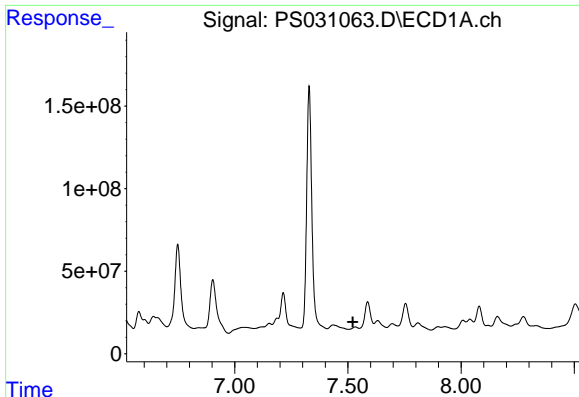
#4 2,4-DCAA

R.T.: 7.329 min  
 Delta R.T.: -0.004 min  
 Response: 2318657279  
 Conc: 586.25 ng/ml



#4 2,4-DCAA

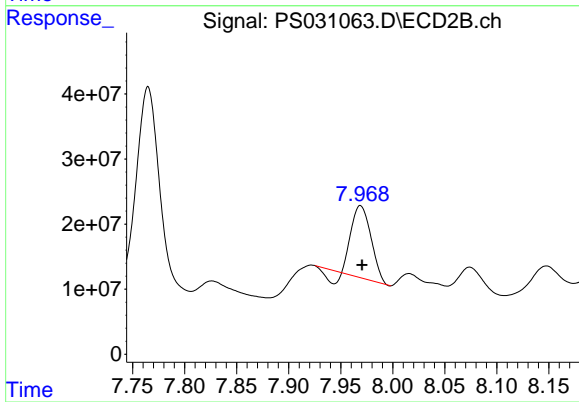
R.T.: 7.765 min  
 Delta R.T.: -0.004 min  
 Response: 529870247  
 Conc: 511.44 ng/ml



#5 DICAMBA

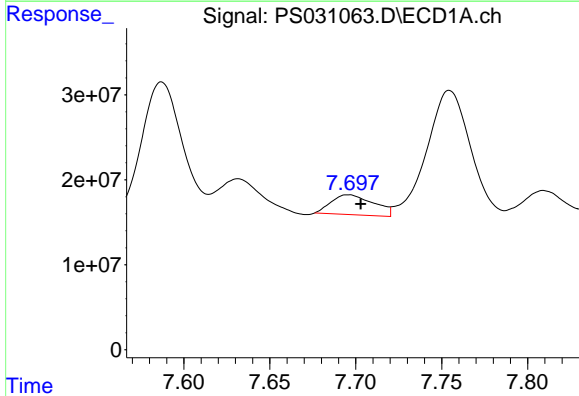
R.T.: 7.532 min  
 Delta R.T.: 0.010 min  
 Response: -322306  
 Conc: N.D.

Instrument :  
 ECD\_S  
 ClientSampleId :



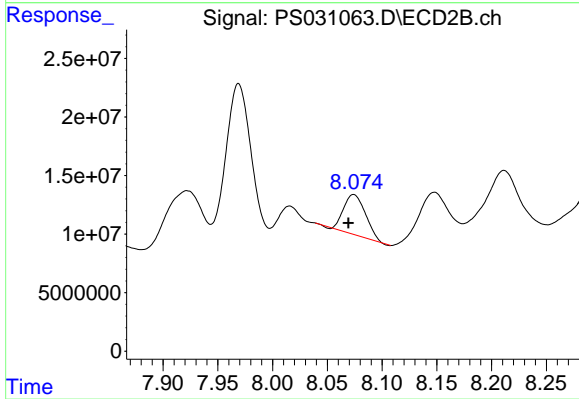
#5 DICAMBA

R.T.: 7.969 min  
 Delta R.T.: -0.002 min  
 Response: 132304949  
 Conc: 20.43 ng/ml



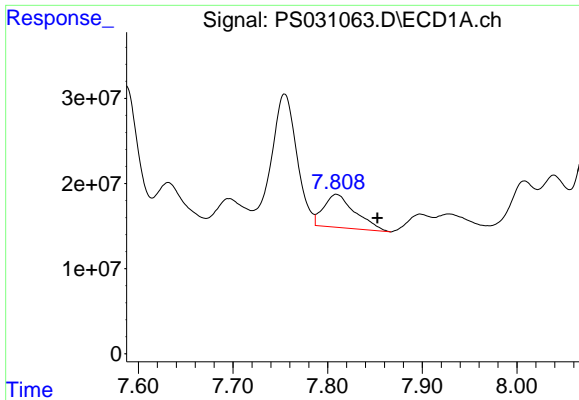
#6 MCPP

R.T.: 7.696 min  
 Delta R.T.: -0.007 min  
 Response: 40358309  
 Conc: 4.39 ug/ml



#6 MCPP

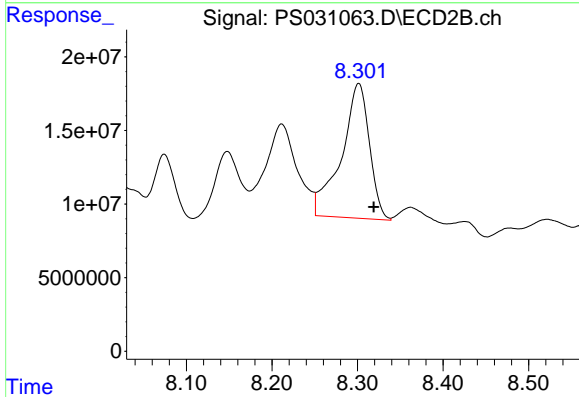
R.T.: 8.074 min  
 Delta R.T.: 0.005 min  
 Response: 47145777  
 Conc: 22.05 ug/ml



#7 MCPA

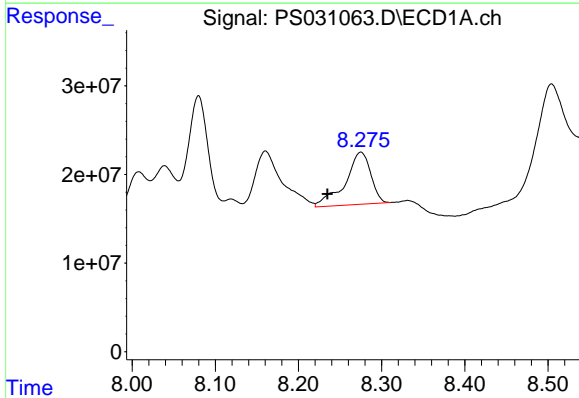
R.T.: 7.809 min  
 Delta R.T.: -0.044 min  
 Response: 89556668  
 Conc: 8.21 ug/ml

Instrument :  
 ECD\_S  
 ClientSampleId :



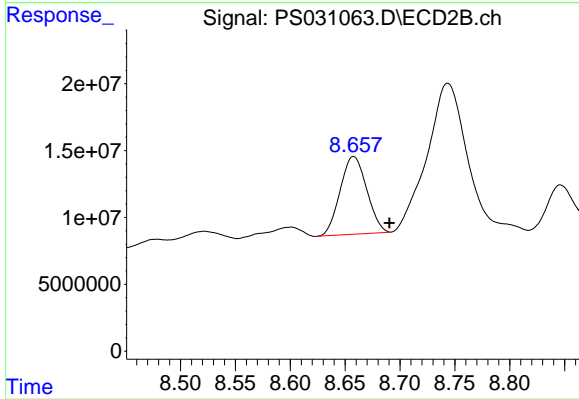
#7 MCPA

R.T.: 8.301 min  
 Delta R.T.: -0.018 min  
 Response: 208906984  
 Conc: 65.17 ug/ml



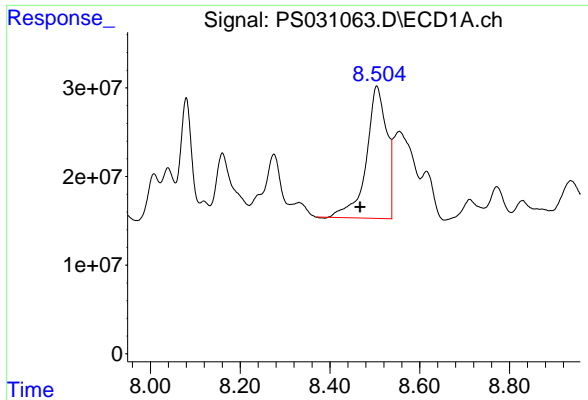
#8 DICHLORPROP

R.T.: 8.275 min  
 Delta R.T.: 0.040 min  
 Response: 126074245  
 Conc: 37.02 ng/ml



#8 DICHLORPROP

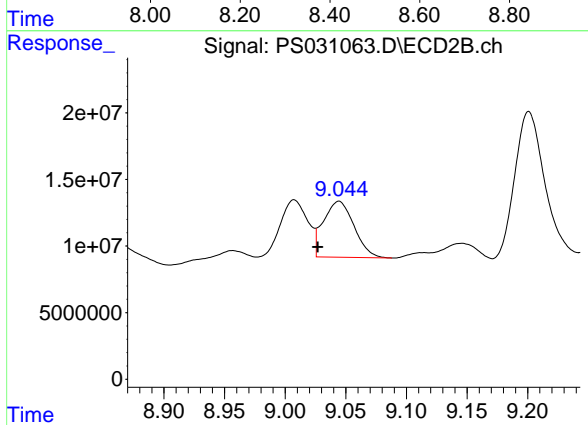
R.T.: 8.658 min  
 Delta R.T.: -0.033 min  
 Response: 98013250  
 Conc: 64.51 ng/ml



#9 2,4-D

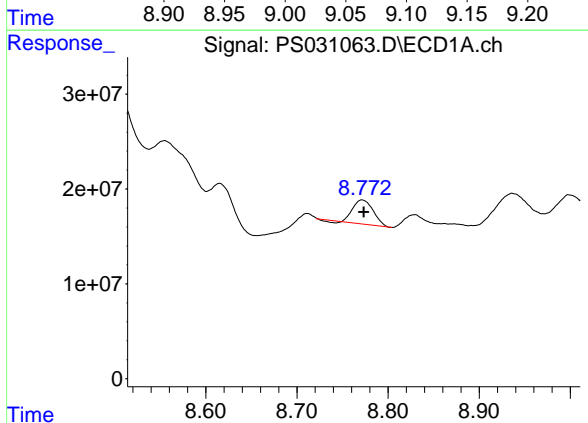
R.T.: 8.504 min  
 Delta R.T.: 0.037 min  
 Response: 472399677  
 Conc: 153.45 ng/ml

Instrument :  
 ECD\_S  
 ClientSampleId :



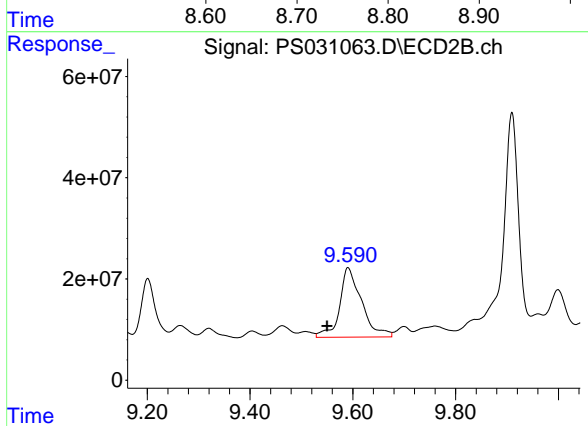
#9 2,4-D

R.T.: 9.044 min  
 Delta R.T.: 0.017 min  
 Response: 73595683  
 Conc: 43.31 ng/ml



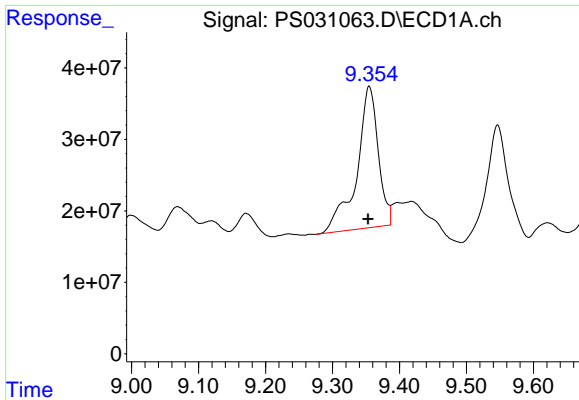
#10 Pentachlorophenol

R.T.: 8.771 min  
 Delta R.T.: -0.002 min  
 Response: 38777670  
 Conc: N.D.



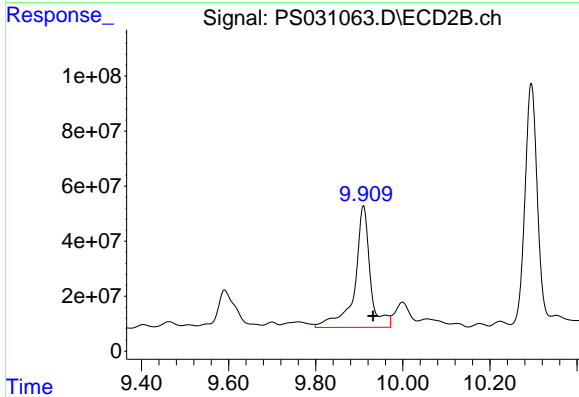
#10 Pentachlorophenol

R.T.: 9.592 min  
 Delta R.T.: 0.042 min  
 Response: 406244738  
 Conc: 10.54 ng/ml

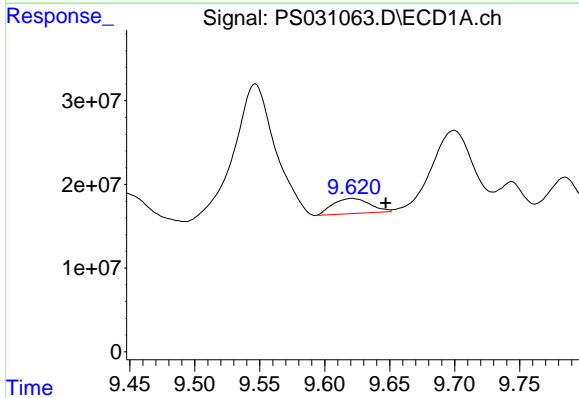


#11 2,4,5-TP (SILVEX)  
 R.T.: 9.355 min  
 Delta R.T.: 0.002 min  
 Response: 440382234  
 Conc: 23.66 ng/ml

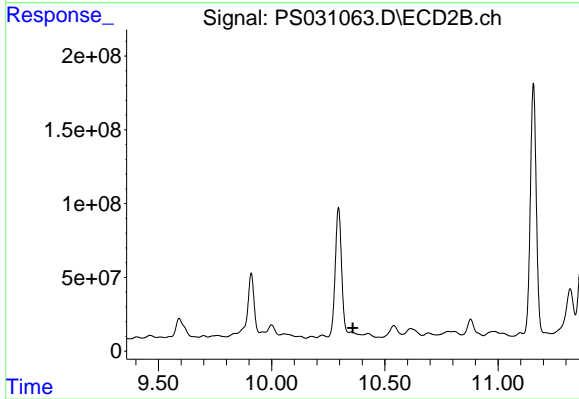
Instrument :  
 ECD\_S  
 ClientSampleId :



#11 2,4,5-TP (SILVEX)  
 R.T.: 9.910 min  
 Delta R.T.: -0.022 min  
 Response: 1086953748  
 Conc: 74.06 ng/ml

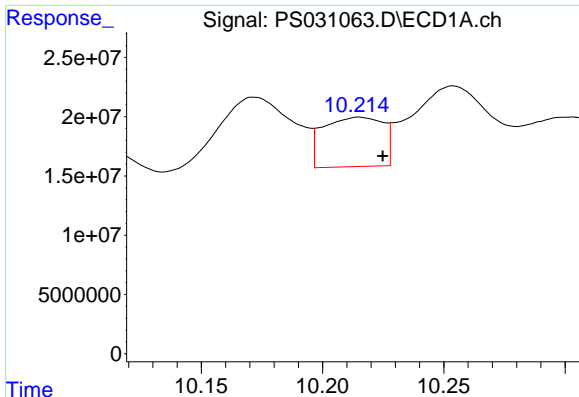


#12 2,4,5-T  
 R.T.: 9.621 min  
 Delta R.T.: -0.026 min  
 Response: 36124425  
 Conc: 2.37 ng/ml



#12 2,4,5-T  
 R.T.: 0.000 min  
 Exp R.T. : 10.358 min  
 Response: 0  
 Conc: N.D.

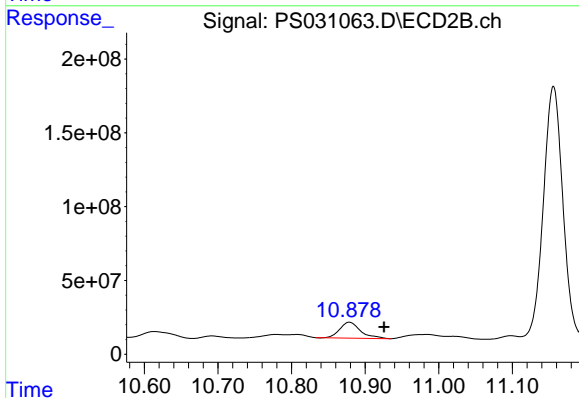




#13 2,4-DB

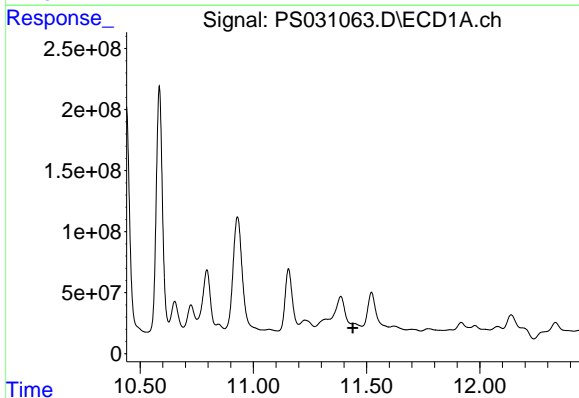
R.T.: 10.215 min  
 Delta R.T.: -0.010 min  
 Response: 71736010  
 Conc: 33.05 ng/ml

Instrument :  
 ECD\_S  
 ClientSampleId :



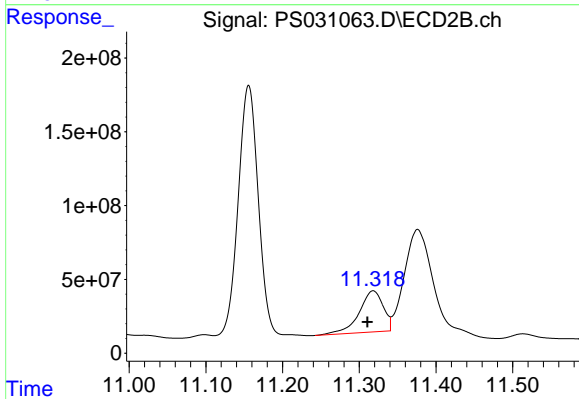
#13 2,4-DB

R.T.: 10.879 min  
 Delta R.T.: -0.047 min  
 Response: 211176649  
 Conc: 178.48 ng/ml



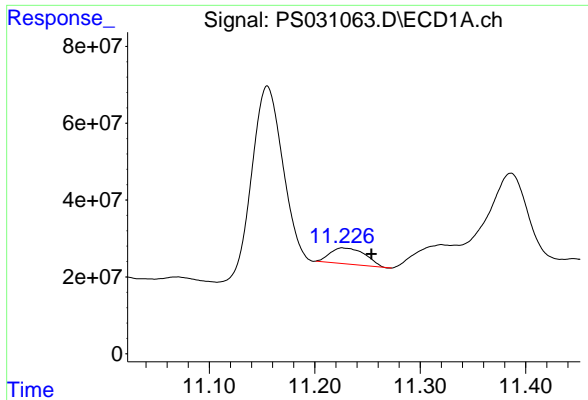
#14 DINOSEB

R.T.: 11.445 min  
 Delta R.T.: 0.006 min  
 Response: -33602040  
 Conc: N.D.



#14 DINOSEB

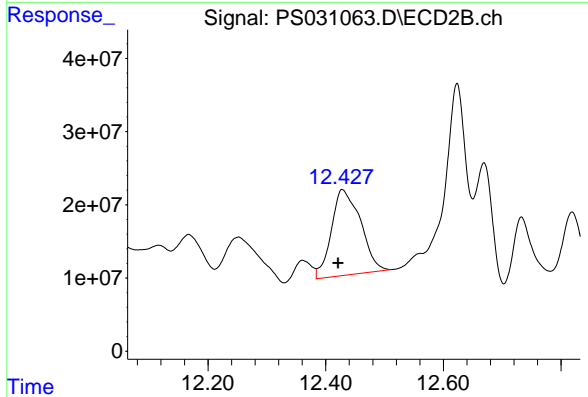
R.T.: 11.318 min  
 Delta R.T.: 0.008 min  
 Response: 609128094  
 Conc: 53.66 ng/ml



#15 Picloram

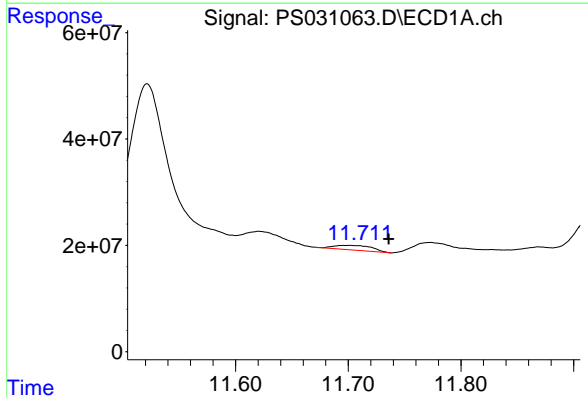
R.T.: 11.226 min  
 Delta R.T.: -0.028 min  
 Response: 95473101  
 Conc: 6.55 ng/ml

Instrument :  
 ECD\_S  
 ClientSampleId :



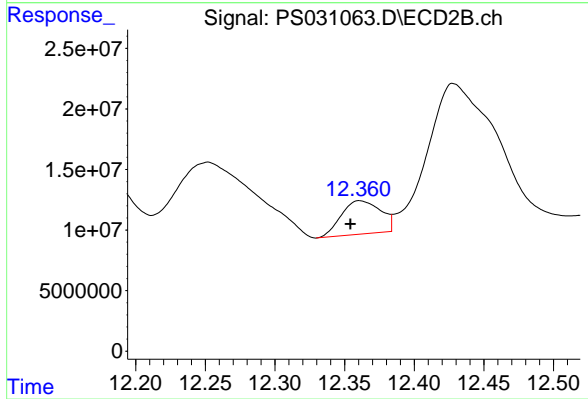
#15 Picloram

R.T.: 12.430 min  
 Delta R.T.: 0.009 min  
 Response: 402879900  
 Conc: 17.16 ng/ml



#16 DCPA

R.T.: 11.701 min  
 Delta R.T.: -0.035 min  
 Response: 20223757  
 Conc: N.D.



#16 DCPA

R.T.: 12.362 min  
 Delta R.T.: 0.008 min  
 Response: 53950111  
 Conc: 2.39 ng/ml