

Data Path : Z:\pestpcbsrv\HPCHEM1\ECD_S\Data\PS071525\
 Data File : PS031064.D
 Signal(s) : Signal #1: ECD1A.ch Signal #2: ECD2B.ch
 Acq On : 16 Jul 2025 10:58
 Operator : AR\AJ
 Sample : Q2578-07
 Misc :
 ALS Vial : 39 Sample Multiplier: 1

Instrument :
 ECD_S
 ClientSampleId :

Integration File signal 1: autoint1.e
 Integration File signal 2: autoint2.e
 Quant Time: Jul 16 11:24:31 2025
 Quant Method : Z:\pestpcbsrv\HPCHEM1\ECD_S\Method\PS071125.M
 Quant Title : 8080.M
 QLast Update : Mon Jul 14 05:51:06 2025
 Response via : Initial Calibration
 Integrator: ChemStation

Volume Inj. : 1 µl
 Signal #1 Phase : ZB-MR2 Signal #2 Phase: ZB-MR2
 Signal #1 Info : 30M x 0.32mm x0.5 Signal #2 Info : 30M x 0.32mm x 0.25µm

	Compound	RT#1	RT#2	Resp#1	Resp#2	ng/ml	ng/ml

System Monitoring Compounds							
4) S	2,4-DCAA	7.327	7.766	3041.1E6	534.4E6	768.909	515.786 #
Target Compounds							
1) T	Dalapon	2.662f	2.707	1573.1E6	2753.4E6	258.243	968.522 #
2) T	3,5-DICHL...	6.506	6.726	117.9E6	147.1E6	22.505	94.880 #
3) T	4-Nitroph...	7.149	7.312	98308742	7907514	72.821	4.534 #
6) T	MCPD	7.696	8.072	74289670	97400750	8.074	45.558 #
7) T	MCPA	7.856	8.304	22361721	131.8E6	2.050	41.120 #
8) T	DICHLORPROP	8.239	8.668	51162597	22991075	15.025	15.133
9) T	2,4-D	8.488	9.066f	74794784	-10371994	24.296	N.D. #
10) T	Pentachlo...	8.761	9.514f	31139866	17254617	<MDL	<MDL #
11) T	2,4,5-TP ...	9.354	9.909	385.0E6	1434.5E6	20.688	97.748 #
12) T	2,4,5-T	9.623	0.000	186.6E6	0	12.266	N.D. #
13) T	2,4-DB	10.214	10.960f	63718273	12768653	29.353	10.792 #
14) T	DINOSEB	11.448	11.319	-138206135	1004.7E6	N.D.	88.510
15) T	Picloram	11.223f	0.000	33091900	0	2.271	N.D. #
16) T	DCPA	11.713	0.000	28017054	0	1.170	N.D. #

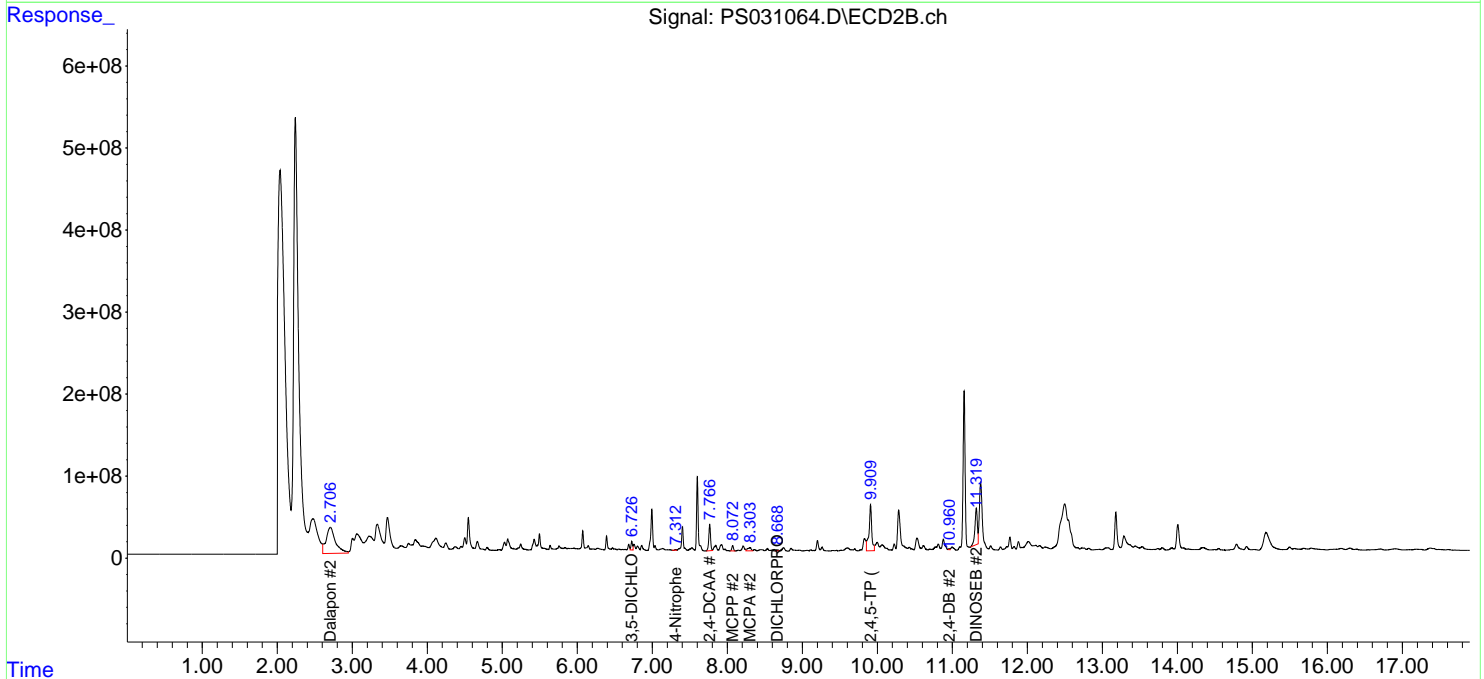
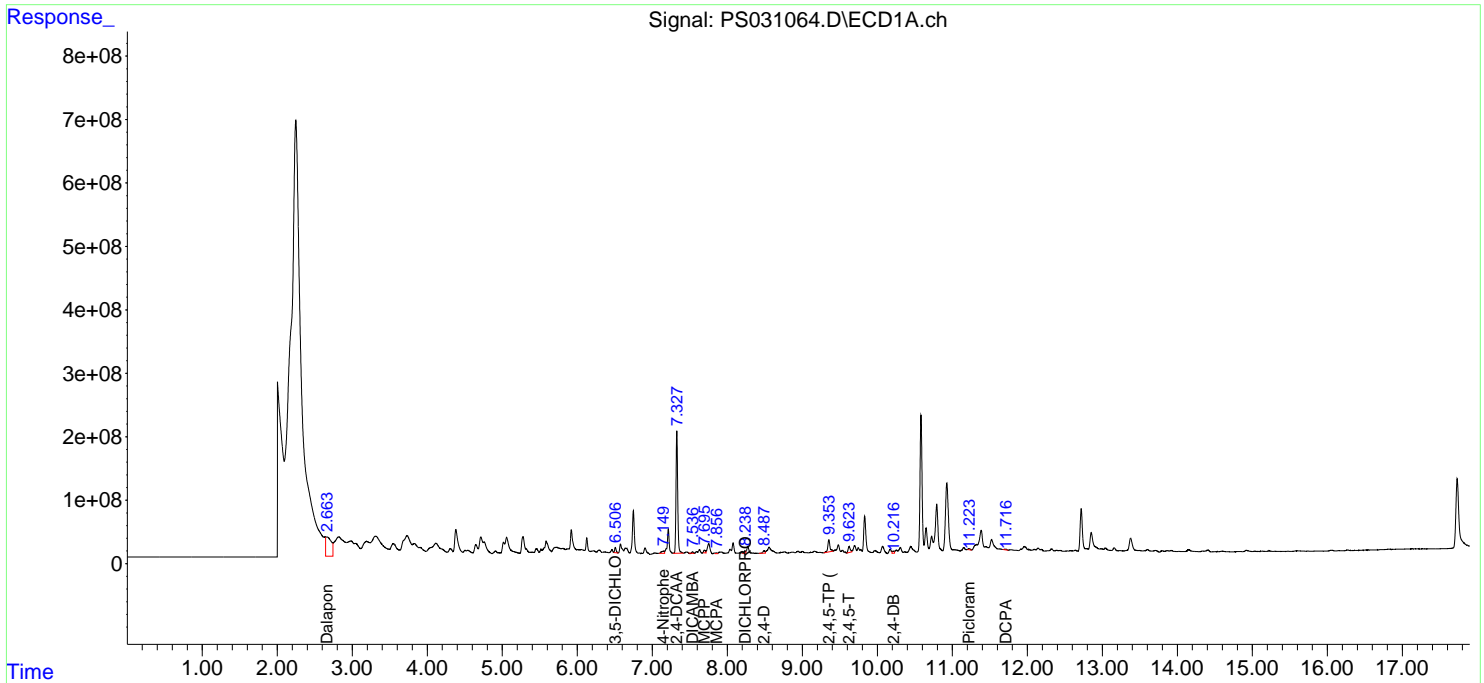
(f)=RT Delta > 1/2 Window (#)=Amounts differ by > 25% (m)=manual int.

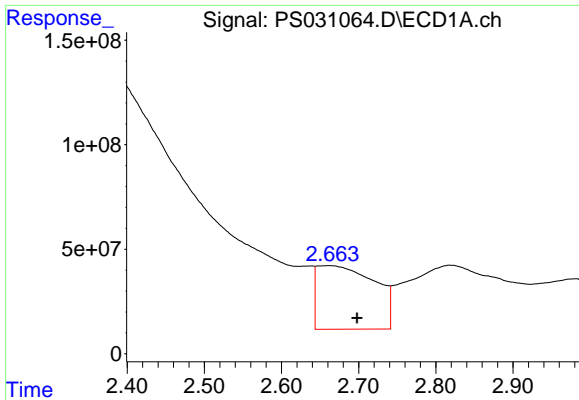
Data Path : Z:\pestpcbsrv\HPCHEM1\ECD_S\Data\PS071525\
 Data File : PS031064.D
 Signal(s) : Signal #1: ECD1A.ch Signal #2: ECD2B.ch
 Acq On : 16 Jul 2025 10:58
 Operator : AR\AJ
 Sample : Q2578-07
 Misc :
 ALS Vial : 39 Sample Multiplier: 1

Instrument :
 ECD_S
 ClientSampleId :

Integration File signal 1: autoint1.e
 Integration File signal 2: autoint2.e
 Quant Time: Jul 16 11:24:31 2025
 Quant Method : Z:\pestpcbsrv\HPCHEM1\ECD_S\Method\PS071125.M
 Quant Title : 8080.M
 QLast Update : Mon Jul 14 05:51:06 2025
 Response via : Initial Calibration
 Integrator: ChemStation

Volume Inj. : 1 µl
 Signal #1 Phase : ZB-MR1 Signal #2 Phase: ZB-MR2
 Signal #1 Info : 30M x 0.32mm x0.5 Signal #2 Info : 30M x 0.32mm x 0.25µm

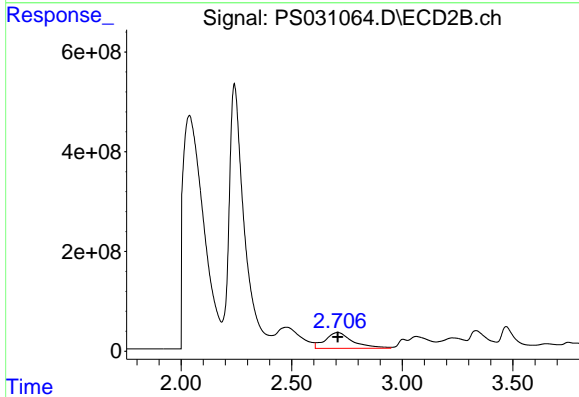




#1 Dalapon

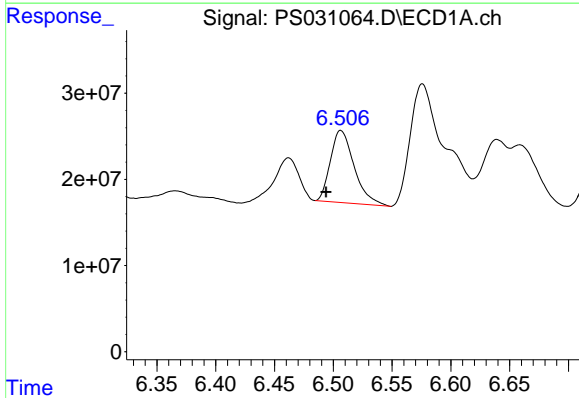
R.T.: 2.662 min
 Delta R.T.: -0.036 min
 Response: 1573146707
 Conc: 258.24 ng/ml

Instrument :
 ECD_S
 ClientSampleId :



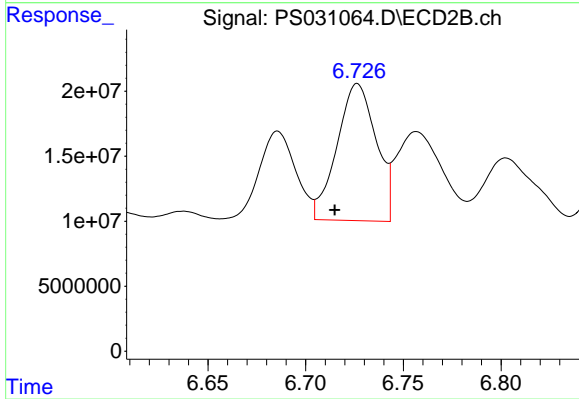
#1 Dalapon

R.T.: 2.707 min
 Delta R.T.: -0.001 min
 Response: 2753372081
 Conc: 968.52 ng/ml



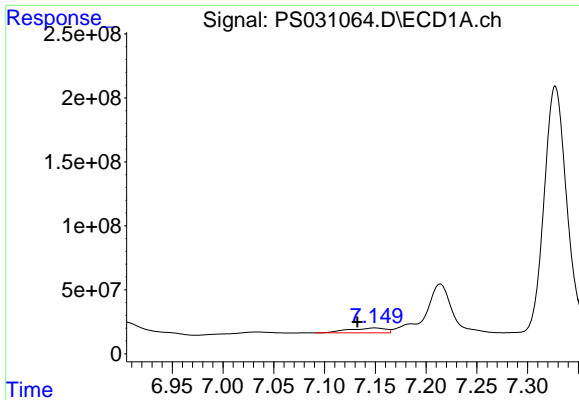
#2 3,5-DICHLOROBENZOIC ACID

R.T.: 6.506 min
 Delta R.T.: 0.013 min
 Response: 117896313
 Conc: 22.51 ng/ml



#2 3,5-DICHLOROBENZOIC ACID

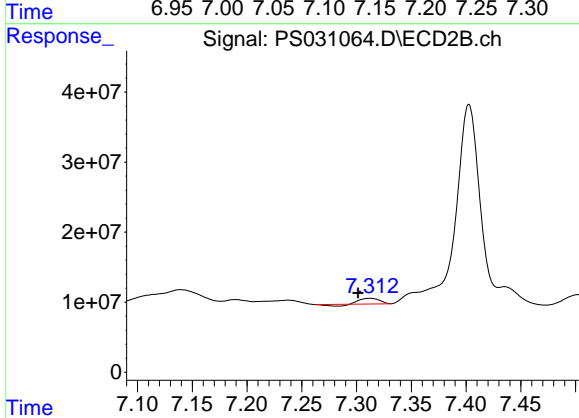
R.T.: 6.726 min
 Delta R.T.: 0.012 min
 Response: 147096693
 Conc: 94.88 ng/ml



#3 4-Nitrophenol

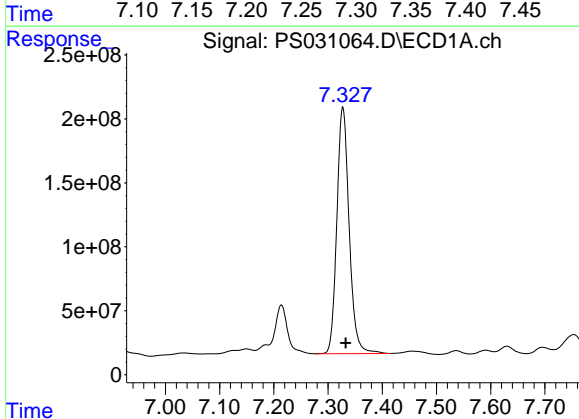
R.T.: 7.149 min
 Delta R.T.: 0.017 min
 Response: 98308742
 Conc: 72.82 ng/ml

Instrument :
 ECD_S
 ClientSampleId :



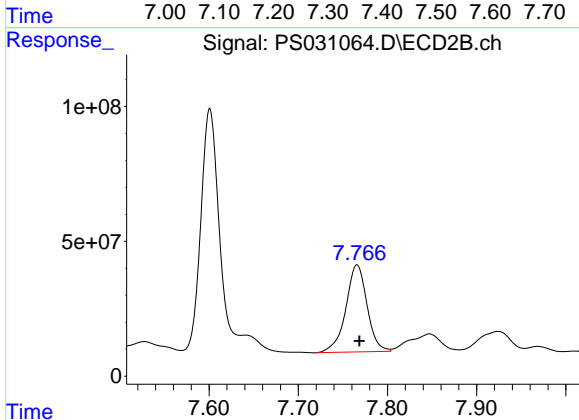
#3 4-Nitrophenol

R.T.: 7.312 min
 Delta R.T.: 0.011 min
 Response: 7907514
 Conc: 4.53 ng/ml



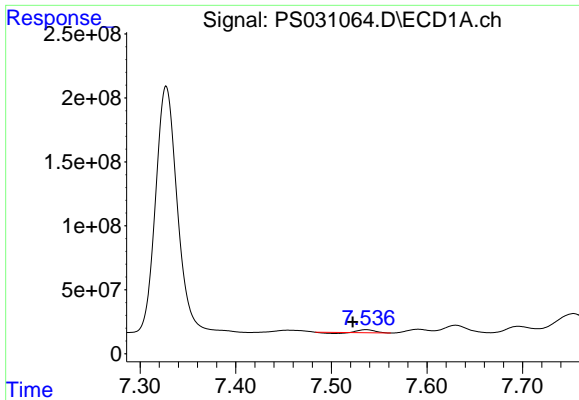
#4 2,4-DCAA

R.T.: 7.327 min
 Delta R.T.: -0.006 min
 Response: 3041092312
 Conc: 768.91 ng/ml



#4 2,4-DCAA

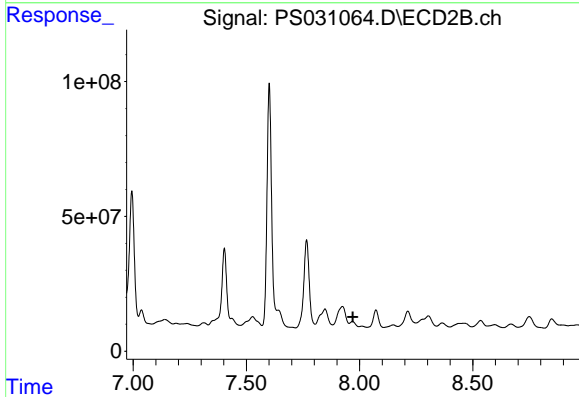
R.T.: 7.766 min
 Delta R.T.: -0.003 min
 Response: 534371542
 Conc: 515.79 ng/ml



#5 DICAMBA

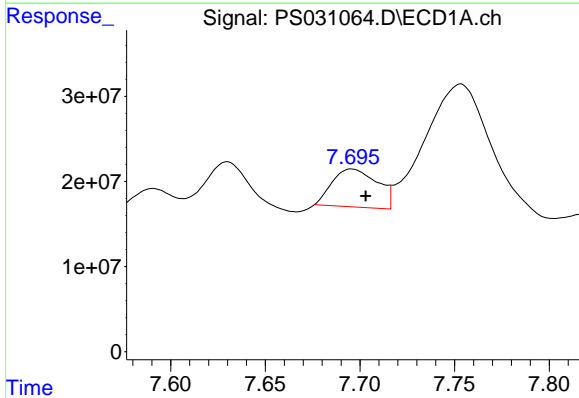
R.T.: 7.536 min
 Delta R.T.: 0.014 min
 Response: 22527678
 Conc: 1.44 ng/ml

Instrument :
 ECD_S
 ClientSampleId :



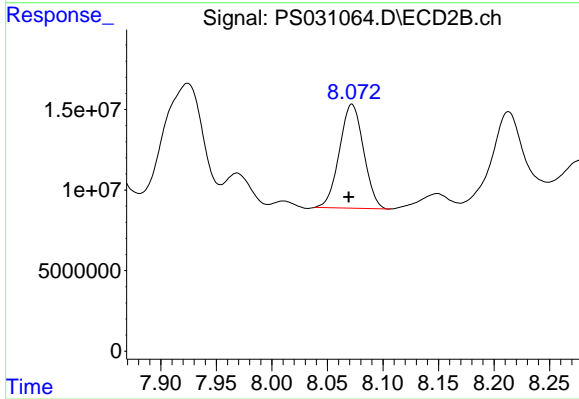
#5 DICAMBA

R.T.: 7.968 min
 Delta R.T.: -0.002 min
 Response: -29488473
 Conc: N.D.



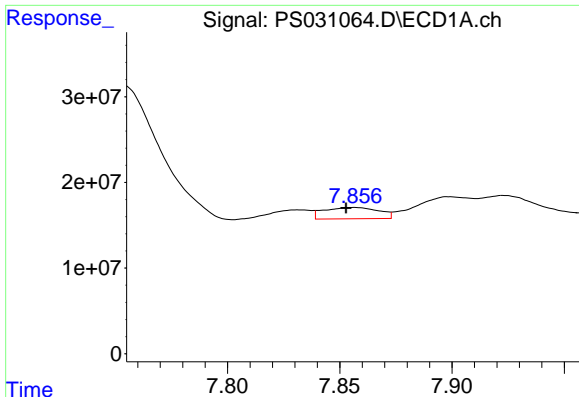
#6 MCPP

R.T.: 7.696 min
 Delta R.T.: -0.007 min
 Response: 74289670
 Conc: 8.07 ug/ml



#6 MCPP

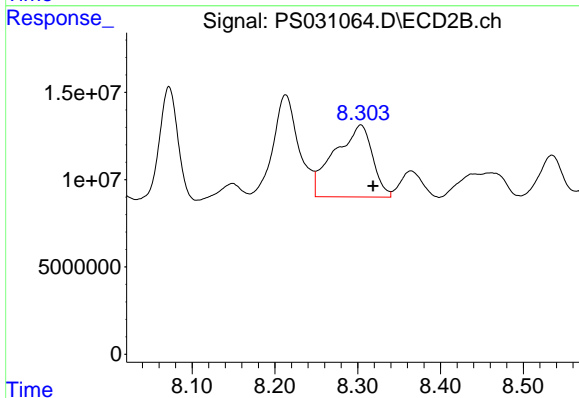
R.T.: 8.072 min
 Delta R.T.: 0.003 min
 Response: 97400750
 Conc: 45.56 ug/ml



#7 MCPA

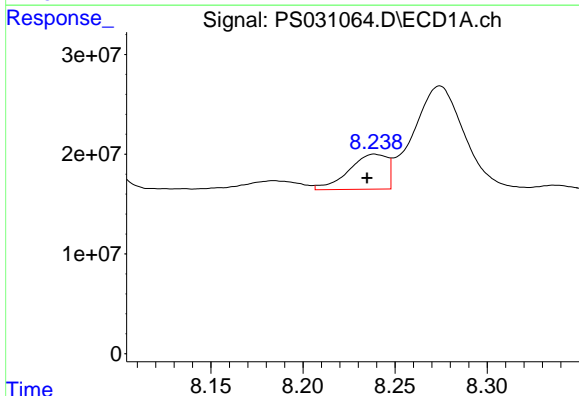
R.T.: 7.856 min
 Delta R.T.: 0.003 min
 Response: 22361721
 Conc: 2.05 ug/ml

Instrument :
 ECD_S
 ClientSampleId :



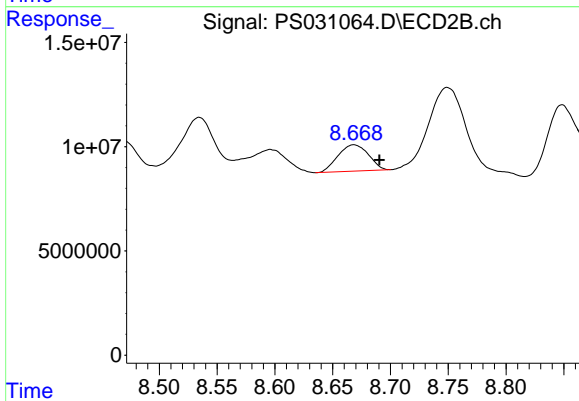
#7 MCPA

R.T.: 8.304 min
 Delta R.T.: -0.015 min
 Response: 131815910
 Conc: 41.12 ug/ml



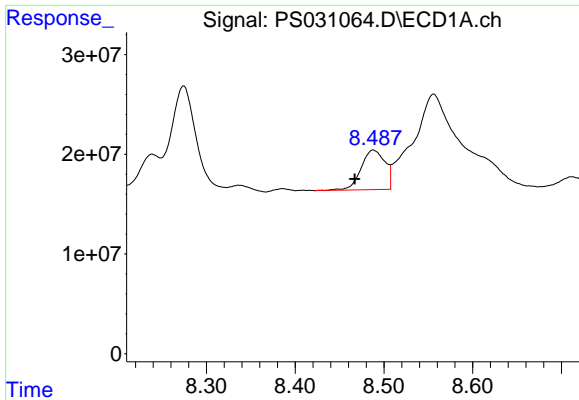
#8 DICHLORPROP

R.T.: 8.239 min
 Delta R.T.: 0.005 min
 Response: 51162597
 Conc: 15.03 ng/ml



#8 DICHLORPROP

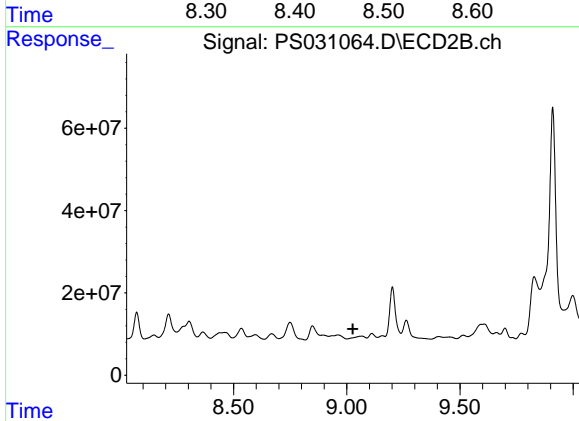
R.T.: 8.668 min
 Delta R.T.: -0.022 min
 Response: 22991075
 Conc: 15.13 ng/ml



#9 2,4-D

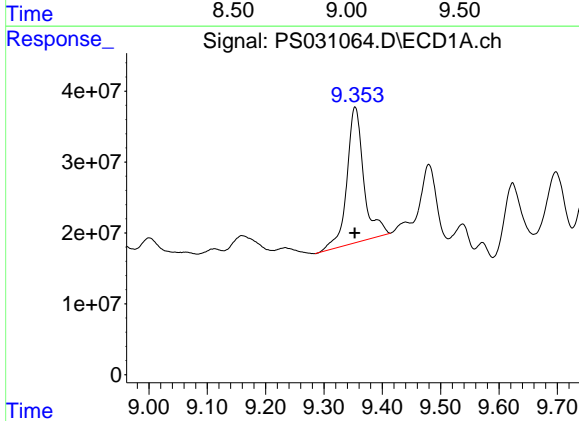
R.T.: 8.488 min
 Delta R.T.: 0.021 min
 Response: 74794784
 Conc: 24.30 ng/ml

Instrument :
 ECD_S
 ClientSampleId :



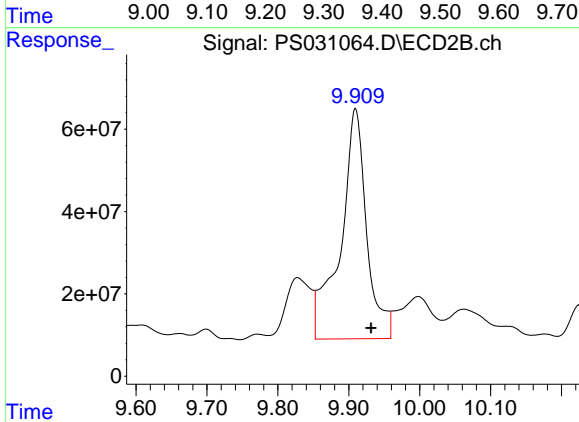
#9 2,4-D

R.T.: 9.066 min
 Delta R.T.: 0.039 min
 Response: -10371994
 Conc: N.D.



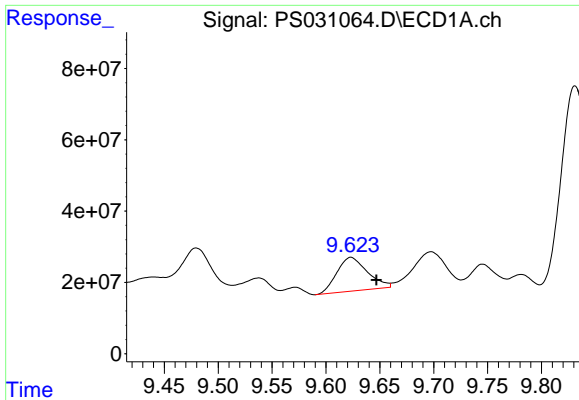
#11 2,4,5-TP (SILVEX)

R.T.: 9.354 min
 Delta R.T.: 0.000 min
 Response: 385026361
 Conc: 20.69 ng/ml



#11 2,4,5-TP (SILVEX)

R.T.: 9.909 min
 Delta R.T.: -0.022 min
 Response: 1434533558
 Conc: 97.75 ng/ml

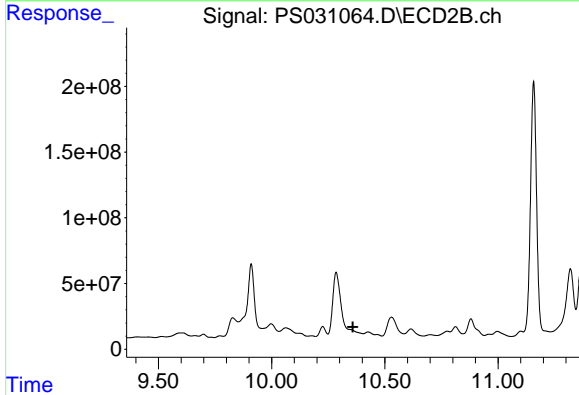


#12 2,4,5-T

R.T.: 9.623 min
 Delta R.T.: -0.024 min
 Response: 186612935
 Conc: 12.27 ng/ml

Instrument :
 ECD_S
 ClientSampleId :

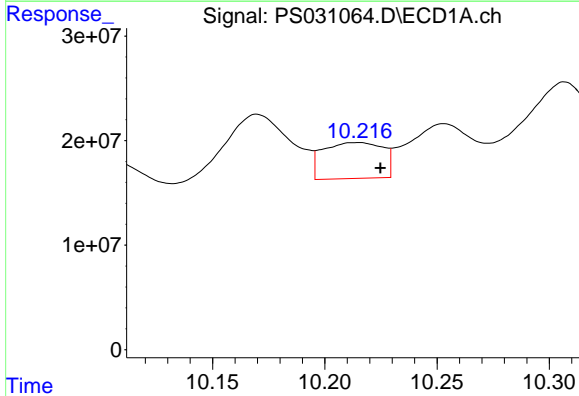
Time



#12 2,4,5-T

R.T.: 0.000 min
 Exp R.T. : 10.358 min
 Response: 0
 Conc: N.D.

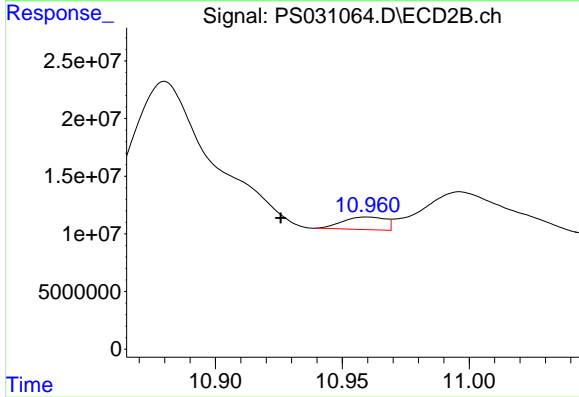
Time



#13 2,4-DB

R.T.: 10.214 min
 Delta R.T.: -0.011 min
 Response: 63718273
 Conc: 29.35 ng/ml

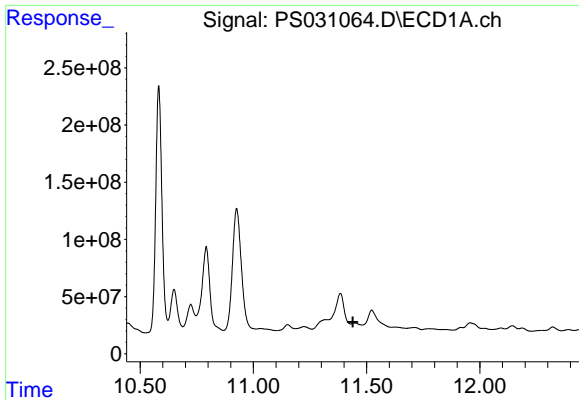
Time



#13 2,4-DB

R.T.: 10.960 min
 Delta R.T.: 0.034 min
 Response: 12768653
 Conc: 10.79 ng/ml

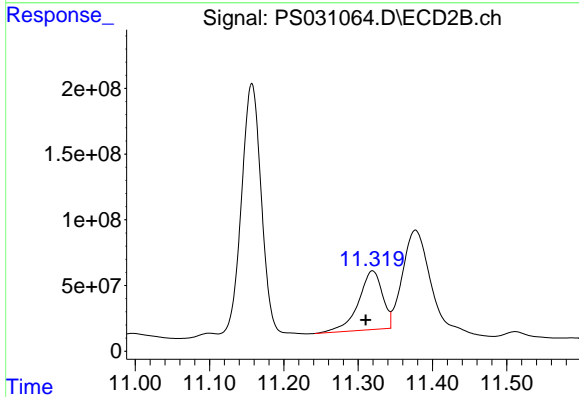
Time



#14 DINOSEB

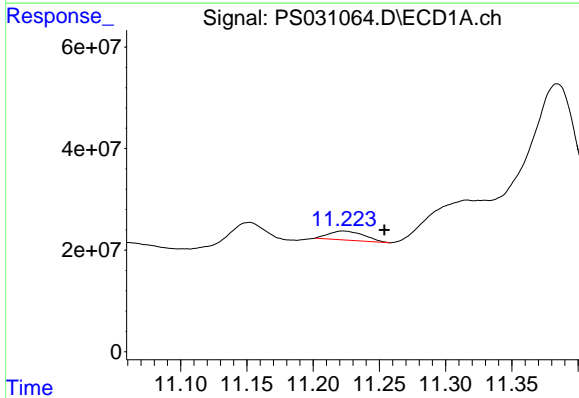
R.T.: 11.448 min
 Delta R.T.: 0.009 min
 Response: -138206135
 Conc: N.D.

Instrument :
 ECD_S
 ClientSampleId :



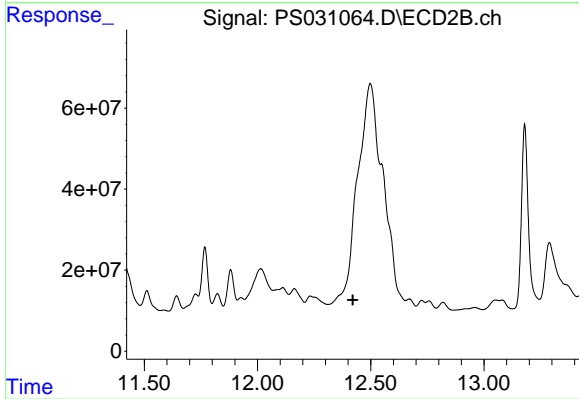
#14 DINOSEB

R.T.: 11.319 min
 Delta R.T.: 0.009 min
 Response: 1004725443
 Conc: 88.51 ng/ml



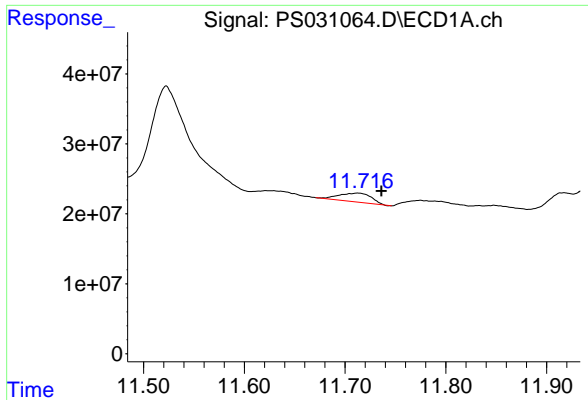
#15 Picloram

R.T.: 11.223 min
 Delta R.T.: -0.031 min
 Response: 33091900
 Conc: 2.27 ng/ml



#15 Picloram

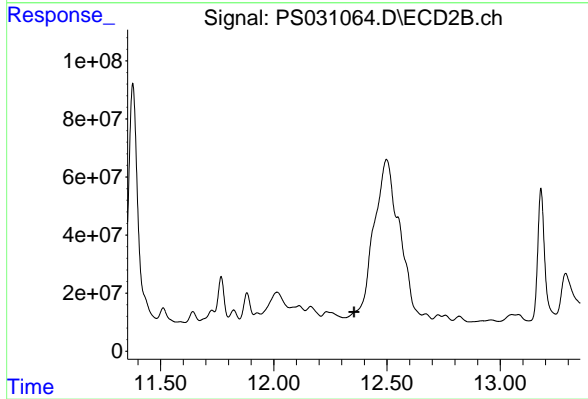
R.T.: 0.000 min
 Exp R.T. : 12.421 min
 Response: 0
 Conc: N.D.



#16 DCPA

R.T.: 11.713 min
Delta R.T.: -0.023 min
Response: 28017054
Conc: 1.17 ng/ml

Instrument :
ECD_S
ClientSampleId :



#16 DCPA

R.T.: 0.000 min
Exp R.T. : 12.354 min
Response: 0
Conc: N.D.