

Data Path : Z:\pestpcbsrv\HPCHEM1\ECD\_S\Data\PS071525\  
 Data File : PS031068.D  
 Signal(s) : Signal #1: ECD1A.ch Signal #2: ECD2B.ch  
 Acq On : 16 Jul 2025 13:51  
 Operator : AR\AJ  
 Sample : Q2579-03  
 Misc :  
 ALS Vial : 43 Sample Multiplier: 1

Instrument :  
 ECD\_S  
 ClientSampleId :

Integration File signal 1: autoint1.e  
 Integration File signal 2: autoint2.e  
 Quant Time: Jul 16 14:16:20 2025  
 Quant Method : Z:\pestpcbsrv\HPCHEM1\ECD\_S\Method\PS071125.M  
 Quant Title : 8080.M  
 QLast Update : Mon Jul 14 05:51:06 2025  
 Response via : Initial Calibration  
 Integrator: ChemStation

Volume Inj. : 1 µl  
 Signal #1 Phase : ZB-MR1 Signal #2 Phase: ZB-MR2  
 Signal #1 Info : 30M x 0.32mm x0.5 Signal #2 Info : 30M x 0.32mm x 0.25µm

Compound	RT#1	RT#2	Resp#1	Resp#2	ng/ml	ng/ml
-----						
System Monitoring Compounds						
4) S 2,4-DCAA	7.328	7.766	1727.6E6	506.8E6	436.812	489.159
Target Compounds						
1) T Dalapon	0.000	2.714	0	3715.3E6	N.D.	1306.874
2) T 3,5-DICHL...	6.509	6.726	46528683	41719065	8.882	26.910 #
3) T 4-Nitroph...	7.112	7.312	11941245	5013142	8.845	2.875 #
5) T DICAMBA	7.540	7.970	18076050	19134478	1.152	2.954 #
6) T MCPP	7.693	8.073	33628972	48166018	3.655	22.529 #
7) T MCPA	7.807f	8.299	214.6E6	105.3E6	19.679	32.850 #
8) T DICHLORPROP	8.271f	8.661f	182.7E6	34555439	53.640	22.745 #
9) T 2,4-D	8.506f	9.008	337.9E6	166.3E6	109.774	97.836
10) T Pentachlo...	8.760	9.505f	6652570	19473666	<MDL	<MDL #
11) T 2,4,5-TP ...	9.333	9.958f	146.3E6	141.4E6	7.859	9.632
12) T 2,4,5-T	9.623	10.352	80152500	107.4E6	5.269	7.677 #
13) T 2,4-DB	10.215	10.911	151.3E6	12519571	69.683	10.581 #
14) T DINOSEB	11.453	11.270f	-5269919	43874383	N.D.	3.865
15) T Picloram	11.234	12.453f	16637809	42289963	1.142	1.801 #
16) T DCPA	11.716	12.347	21671890	7253909	<MDL	<MDL #
-----						

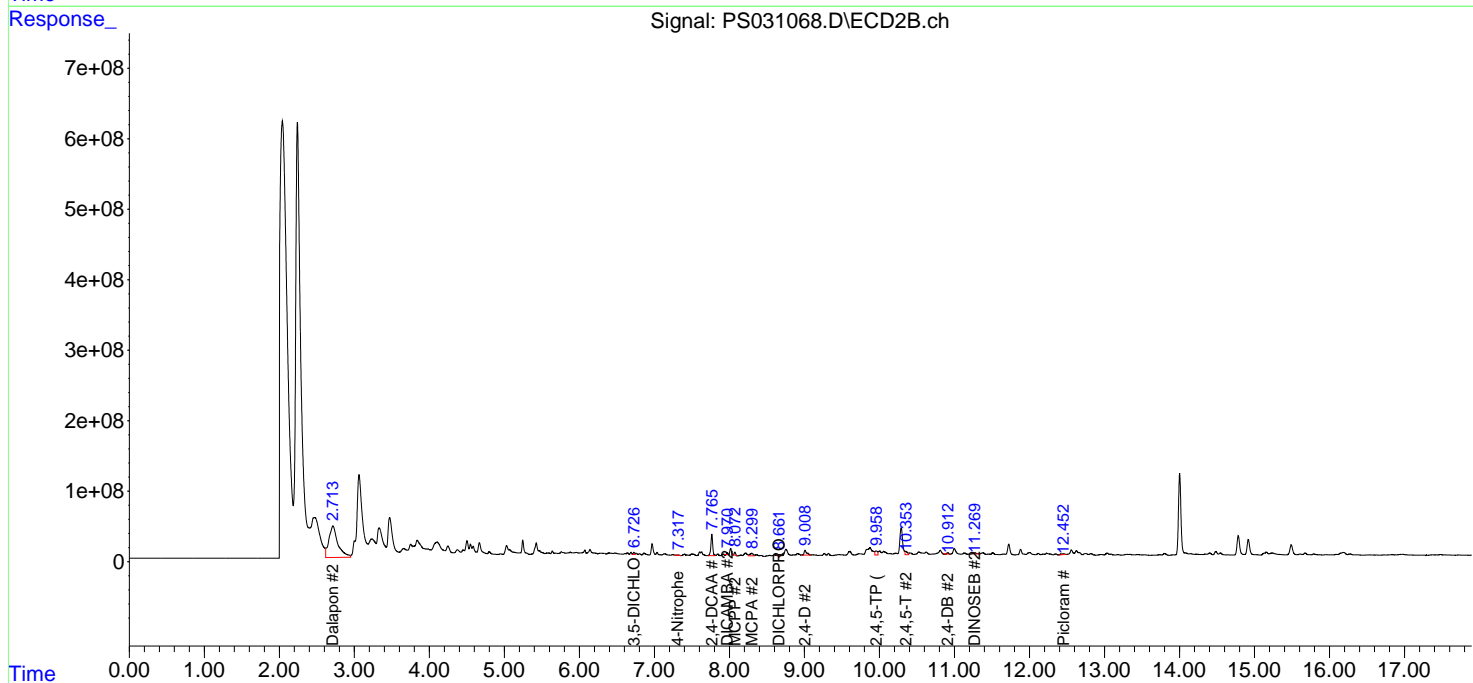
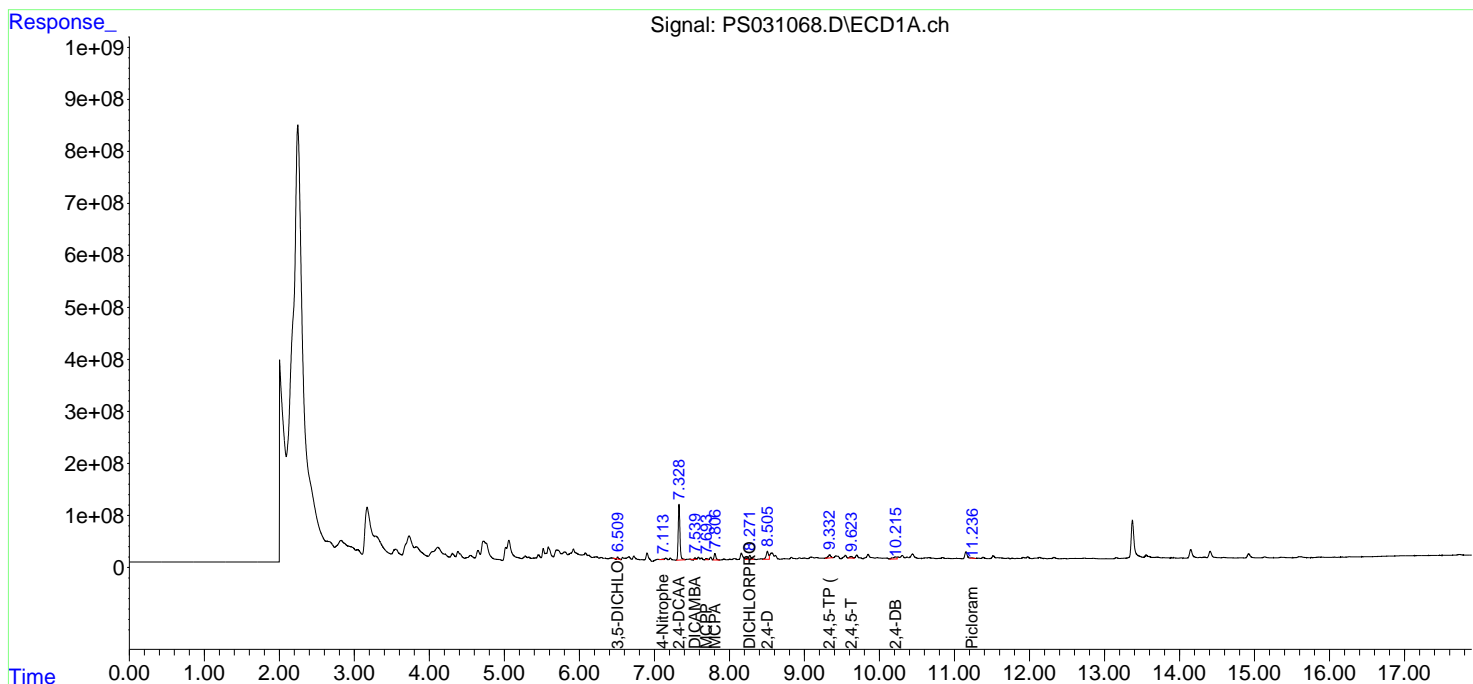
(f)=RT Delta > 1/2 Window (#)=Amounts differ by > 25% (m)=manual int.

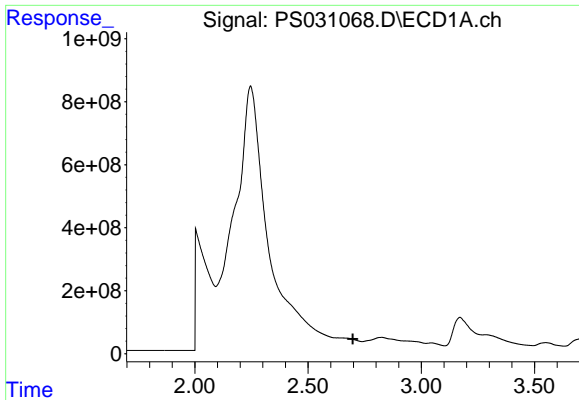
Data Path : Z:\pestpcbsrv\HPCHEM1\ECD\_S\Data\PS071525\  
 Data File : PS031068.D  
 Signal(s) : Signal #1: ECD1A.ch Signal #2: ECD2B.ch  
 Acq On : 16 Jul 2025 13:51  
 Operator : AR\AJ  
 Sample : Q2579-03  
 Misc :  
 ALS Vial : 43 Sample Multiplier: 1

Instrument :  
 ECD\_S  
 ClientSampleId :

Integration File signal 1: autoint1.e  
 Integration File signal 2: autoint2.e  
 Quant Time: Jul 16 14:16:20 2025  
 Quant Method : Z:\pestpcbsrv\HPCHEM1\ECD\_S\Method\PS071125.M  
 Quant Title : 8080.M  
 QLast Update : Mon Jul 14 05:51:06 2025  
 Response via : Initial Calibration  
 Integrator: ChemStation

Volume Inj. : 1 µl  
 Signal #1 Phase : ZB-MR1 Signal #2 Phase: ZB-MR2  
 Signal #1 Info : 30M x 0.32mm x0.5 Signal #2 Info : 30M x 0.32mm x 0.25µm

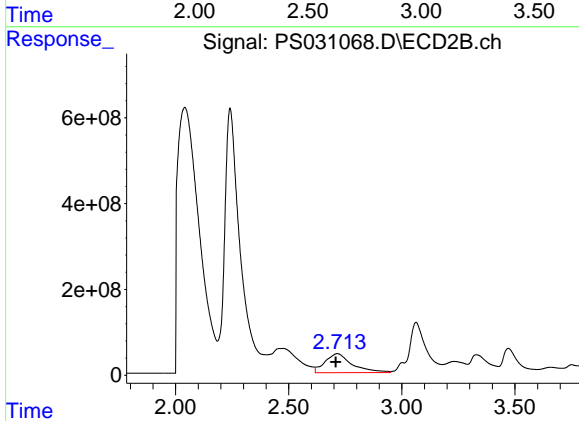




#1 Dalapon

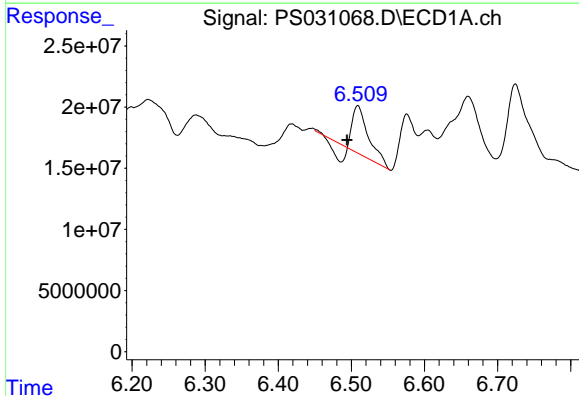
R.T.: 0.000 min  
 Exp R.T.: 2.698 min  
 Response: 0  
 Conc: N.D.

Instrument :  
 ECD\_S  
 ClientSampleId :



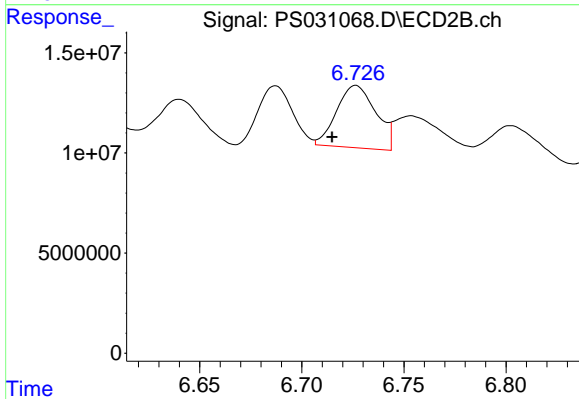
#1 Dalapon

R.T.: 2.714 min  
 Delta R.T.: 0.006 min  
 Response: 3715259218  
 Conc: 1306.87 ng/ml



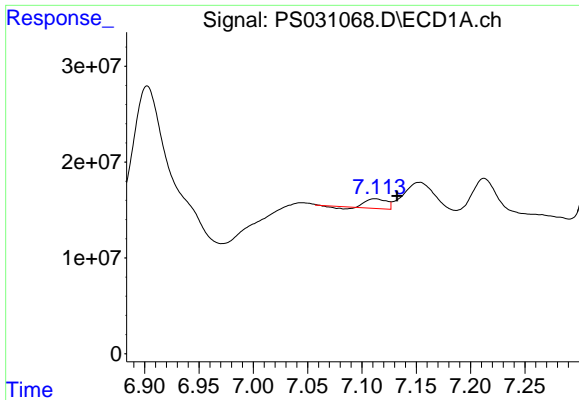
#2 3,5-DICHLOROBENZOIC ACID

R.T.: 6.509 min  
 Delta R.T.: 0.015 min  
 Response: 46528683  
 Conc: 8.88 ng/ml



#2 3,5-DICHLOROBENZOIC ACID

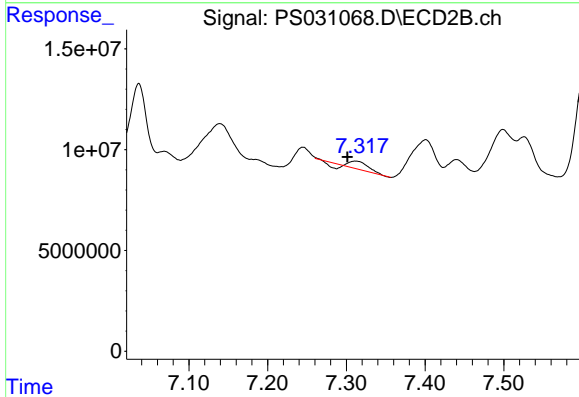
R.T.: 6.726 min  
 Delta R.T.: 0.012 min  
 Response: 41719065  
 Conc: 26.91 ng/ml



#3 4-Nitrophenol

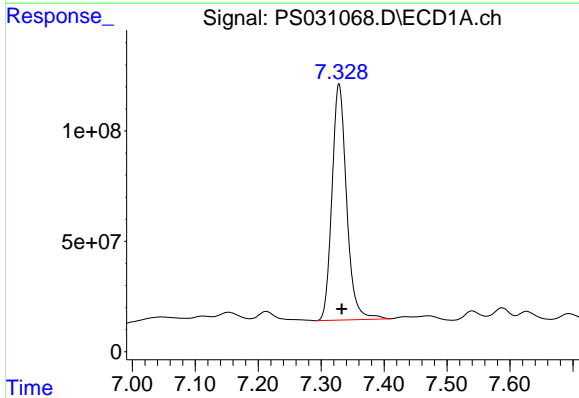
R.T.: 7.112 min  
 Delta R.T.: -0.020 min  
 Response: 11941245  
 Conc: 8.85 ng/ml

Instrument :  
 ECD\_S  
 ClientSampleId :



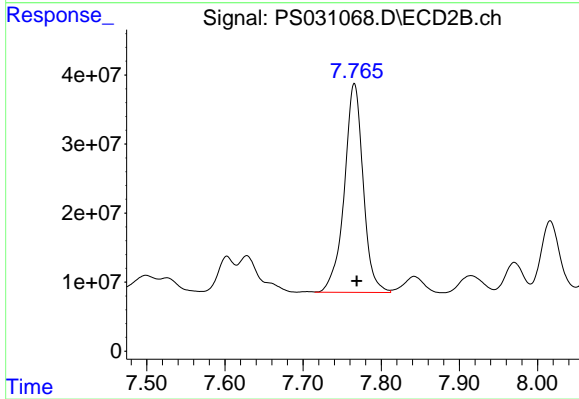
#3 4-Nitrophenol

R.T.: 7.312 min  
 Delta R.T.: 0.011 min  
 Response: 5013142  
 Conc: 2.87 ng/ml



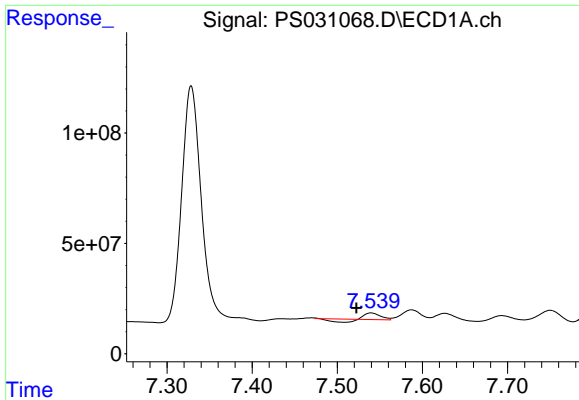
#4 2,4-DCAA

R.T.: 7.328 min  
 Delta R.T.: -0.005 min  
 Response: 1727623657  
 Conc: 436.81 ng/ml



#4 2,4-DCAA

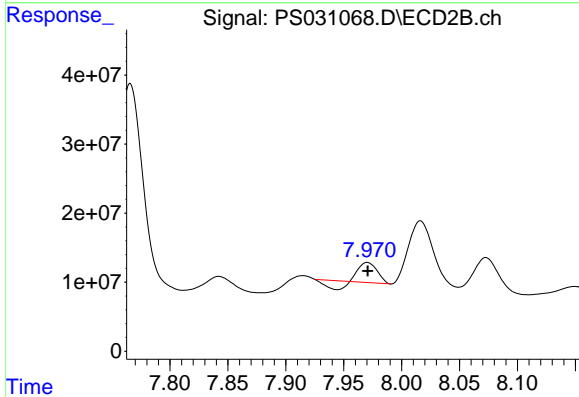
R.T.: 7.766 min  
 Delta R.T.: -0.003 min  
 Response: 506784950  
 Conc: 489.16 ng/ml



#5 DICAMBA

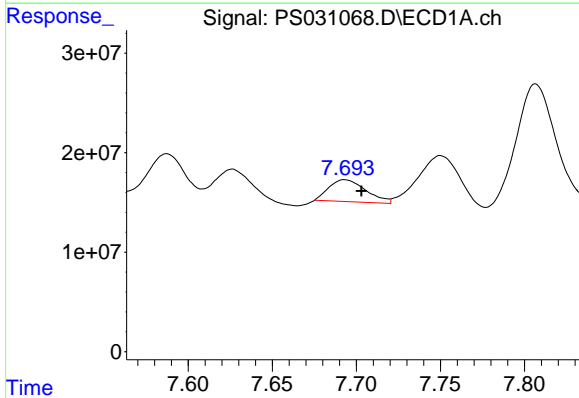
R.T.: 7.540 min  
 Delta R.T.: 0.017 min  
 Response: 18076050  
 Conc: 1.15 ng/ml

Instrument :  
 ECD\_S  
 ClientSampleId :



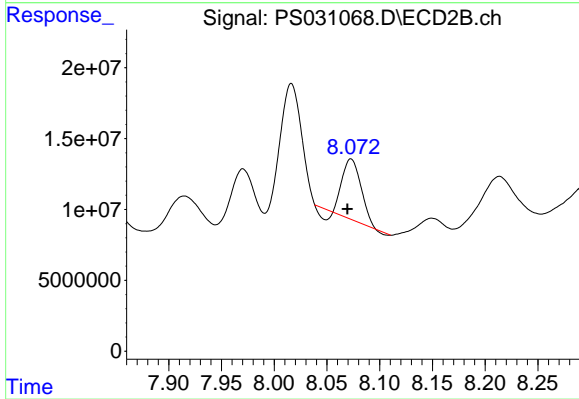
#5 DICAMBA

R.T.: 7.970 min  
 Delta R.T.: 0.000 min  
 Response: 19134478  
 Conc: 2.95 ng/ml



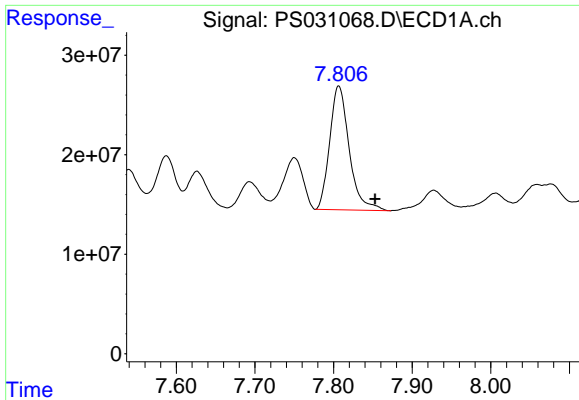
#6 MCP

R.T.: 7.693 min  
 Delta R.T.: -0.010 min  
 Response: 33628972  
 Conc: 3.65 ug/ml



#6 MCP

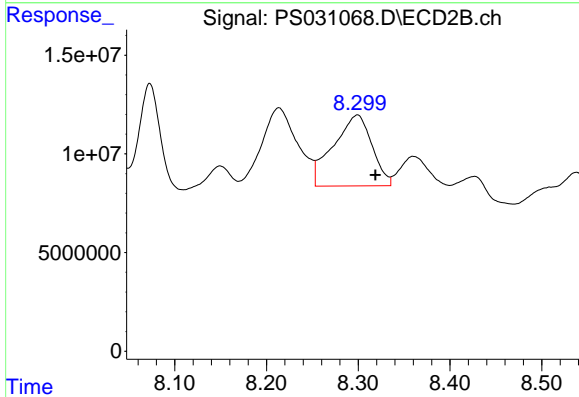
R.T.: 8.073 min  
 Delta R.T.: 0.004 min  
 Response: 48166018  
 Conc: 22.53 ug/ml



#7 MCPA

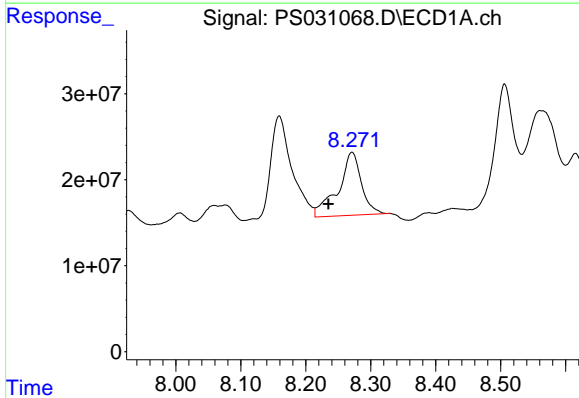
R.T.: 7.807 min  
 Delta R.T.: -0.046 min  
 Response: 214637121  
 Conc: 19.68 ug/ml

Instrument :  
 ECD\_S  
 ClientSampleId :



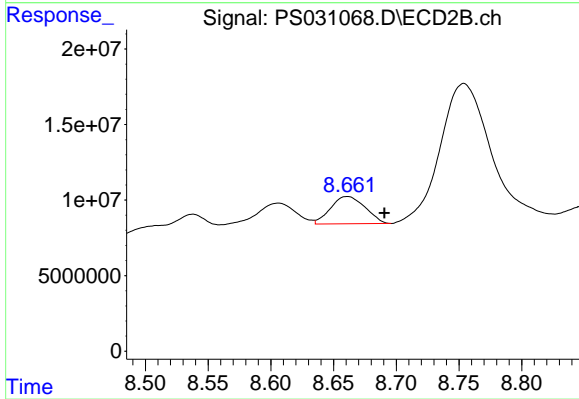
#7 MCPA

R.T.: 8.299 min  
 Delta R.T.: -0.020 min  
 Response: 105305150  
 Conc: 32.85 ug/ml



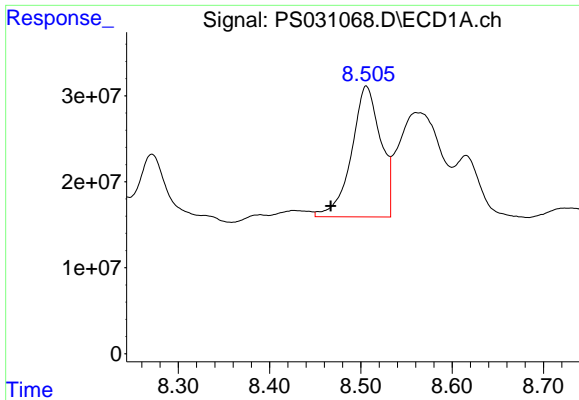
#8 DICHLORPROP

R.T.: 8.271 min  
 Delta R.T.: 0.036 min  
 Response: 182650816  
 Conc: 53.64 ng/ml



#8 DICHLORPROP

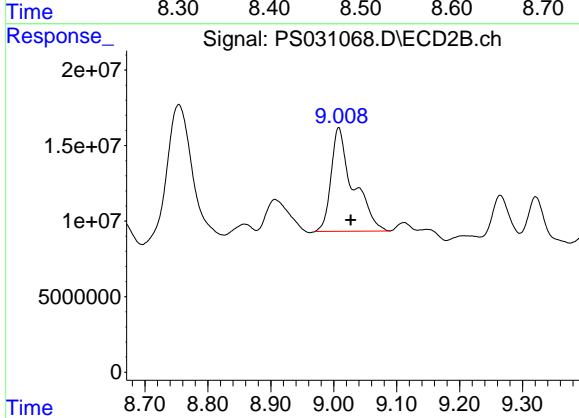
R.T.: 8.661 min  
 Delta R.T.: -0.030 min  
 Response: 34555439  
 Conc: 22.74 ng/ml



#9 2,4-D

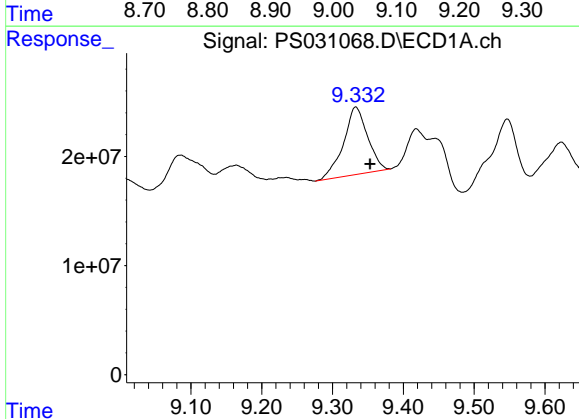
R.T.: 8.506 min  
 Delta R.T.: 0.039 min  
 Response: 337932975  
 Conc: 109.77 ng/ml

Instrument :  
 ECD\_S  
 ClientSampleId :



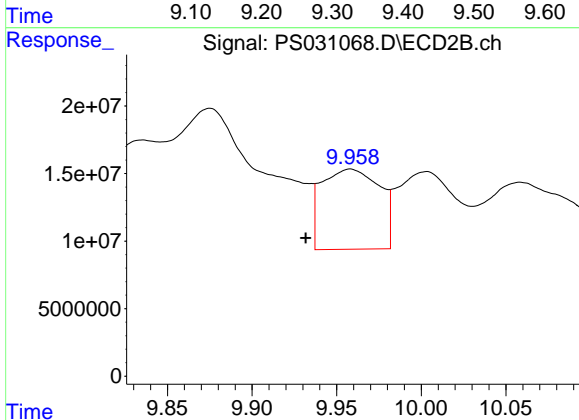
#9 2,4-D

R.T.: 9.008 min  
 Delta R.T.: -0.019 min  
 Response: 166269309  
 Conc: 97.84 ng/ml



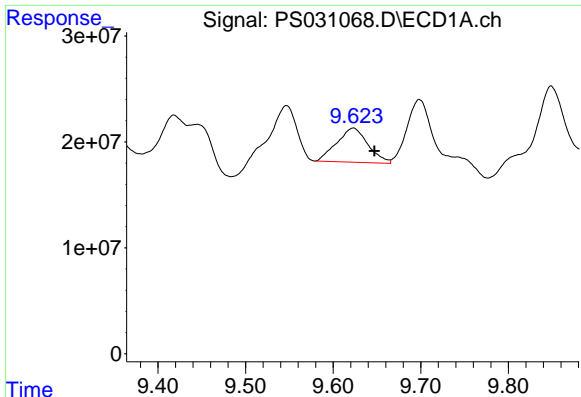
#11 2,4,5-TP (SILVEX)

R.T.: 9.333 min  
 Delta R.T.: -0.020 min  
 Response: 146266003  
 Conc: 7.86 ng/ml



#11 2,4,5-TP (SILVEX)

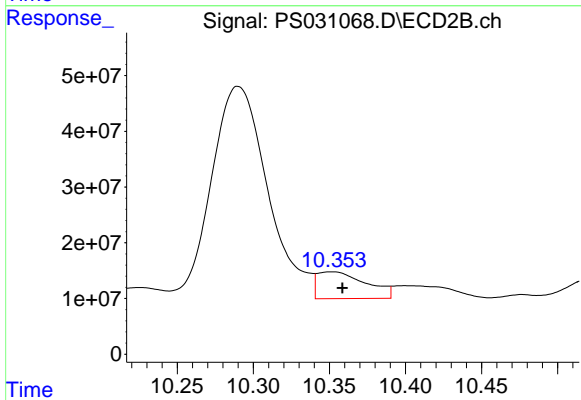
R.T.: 9.958 min  
 Delta R.T.: 0.026 min  
 Response: 141355294  
 Conc: 9.63 ng/ml



#12 2,4,5-T

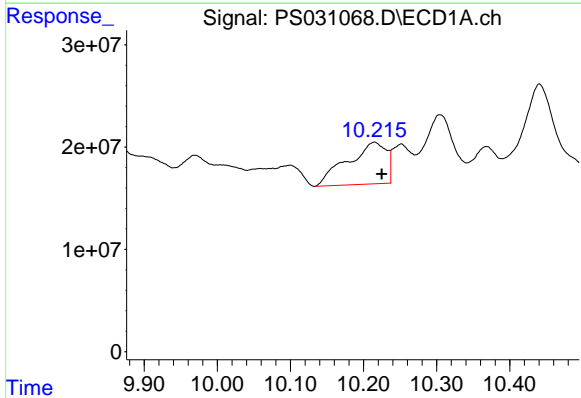
R.T.: 9.623 min  
 Delta R.T.: -0.024 min  
 Response: 80152500  
 Conc: 5.27 ng/ml

Instrument :  
 ECD\_S  
 ClientSampleId :



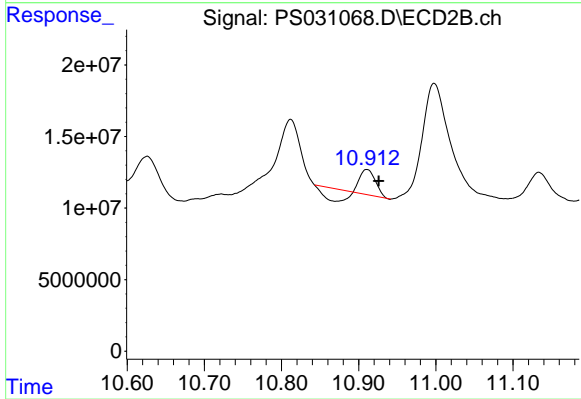
#12 2,4,5-T

R.T.: 10.352 min  
 Delta R.T.: -0.007 min  
 Response: 107416087  
 Conc: 7.68 ng/ml



#13 2,4-DB

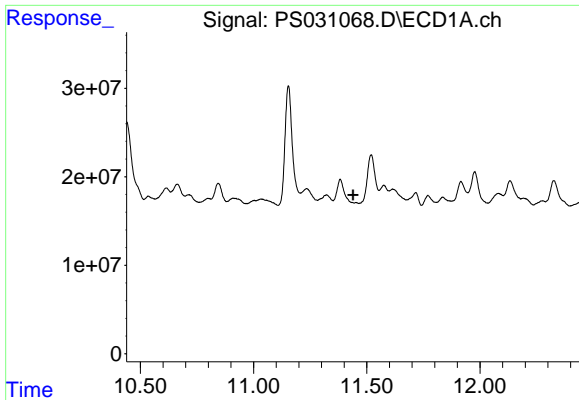
R.T.: 10.215 min  
 Delta R.T.: -0.010 min  
 Response: 151266644  
 Conc: 69.68 ng/ml



#13 2,4-DB

R.T.: 10.911 min  
 Delta R.T.: -0.015 min  
 Response: 12519571  
 Conc: 10.58 ng/ml

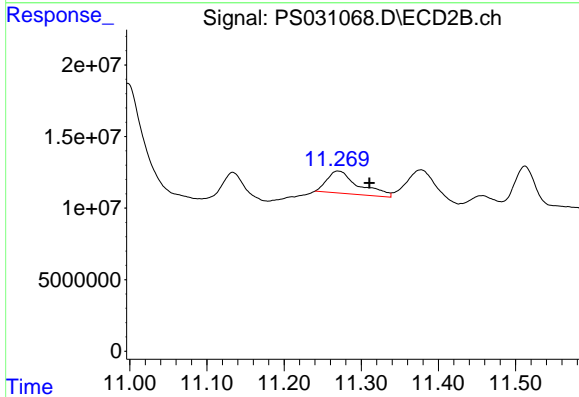




#14 DINOSEB

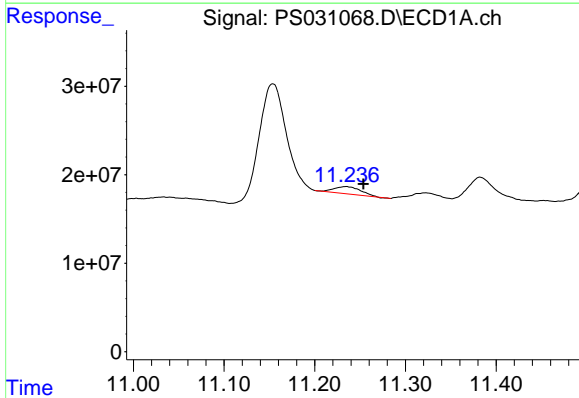
R.T.: 11.453 min  
 Delta R.T.: 0.013 min  
 Response: -5269919  
 Conc: N.D.

Instrument :  
 ECD\_S  
 ClientSampleId :



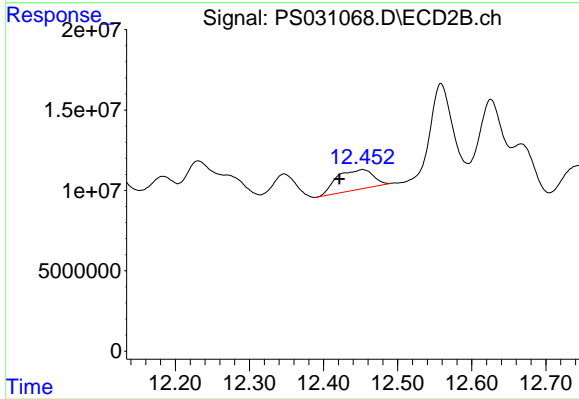
#14 DINOSEB

R.T.: 11.270 min  
 Delta R.T.: -0.040 min  
 Response: 43874383  
 Conc: 3.87 ng/ml



#15 Picloram

R.T.: 11.234 min  
 Delta R.T.: -0.019 min  
 Response: 16637809  
 Conc: 1.14 ng/ml



#15 Picloram

R.T.: 12.453 min  
 Delta R.T.: 0.031 min  
 Response: 42289963  
 Conc: 1.80 ng/ml