

Data Path : Z:\pestpcbsrv\HPCHEM1\ECD_S\Data\PS071525\
 Data File : PS031069.D
 Signal(s) : Signal #1: ECD1A.ch Signal #2: ECD2B.ch
 Acq On : 16 Jul 2025 14:15
 Operator : AR\AJ
 Sample : Q2579-07
 Misc :
 ALS Vial : 44 Sample Multiplier: 1

Instrument :
 ECD_S
 ClientSampleId :

Integration File signal 1: autoint1.e
 Integration File signal 2: autoint2.e
 Quant Time: Jul 16 14:33:38 2025
 Quant Method : Z:\pestpcbsrv\HPCHEM1\ECD_S\Method\PS071125.M
 Quant Title : 8080.M
 QLast Update : Mon Jul 14 05:51:06 2025
 Response via : Initial Calibration
 Integrator: ChemStation

Volume Inj. : 1 µl
 Signal #1 Phase : ZB-MR2 Signal #2 Phase: ZB-MR2
 Signal #1 Info : 30M x 0.32mm x0.5 Signal #2 Info : 30M x 0.32mm x 0.25µm

Compound	RT#1	RT#2	Resp#1	Resp#2	ng/ml	ng/ml

System Monitoring Compounds						
4) S 2,4-DCAA	7.329	7.767	1598.6E6	459.8E6	404.196	443.825
Target Compounds						
1) T Dalapon	2.662f	2.716	1460.8E6	3154.4E6	239.806	1109.598 #
2) T 3,5-DICHL...	6.508	6.689f	58914776	34164757	11.246	22.037 #
3) T 4-Nitroph...	7.111	0.000	2004852	0	1.485	N.D. #
6) T MCPP	7.753f	8.076	59568955	1595032	6.474	<MDL #
7) T MCPA	7.808f	8.271f	11398996	40938402	1.045	12.771 #
8) T DICHLORPROP	8.243	8.667	16790248	15227291	4.931	10.023 #
9) T 2,4-D	0.000	9.010	0	13442971	N.D.	7.910
10) T Pentachlo...	8.768	9.549	1908.3E6	1228.2E6	37.968	31.872
11) T 2,4,5-TP ...	9.332	9.966f	29170511	728.2E6	1.567	49.621 #
12) T 2,4,5-T	9.605f	0.000	16042929	0	1.055	N.D. #
13) T 2,4-DB	10.248	10.914	168.0E6	2450032	77.386	2.071 #
14) T DINOSEB	0.000	11.317	0	6597287	N.D.	<MDL
15) T Picloram	11.246	12.424	24998548	37736341	1.716	1.607
16) T DCPA	11.699f	12.353	21486759	7086291	<MDL	<MDL #

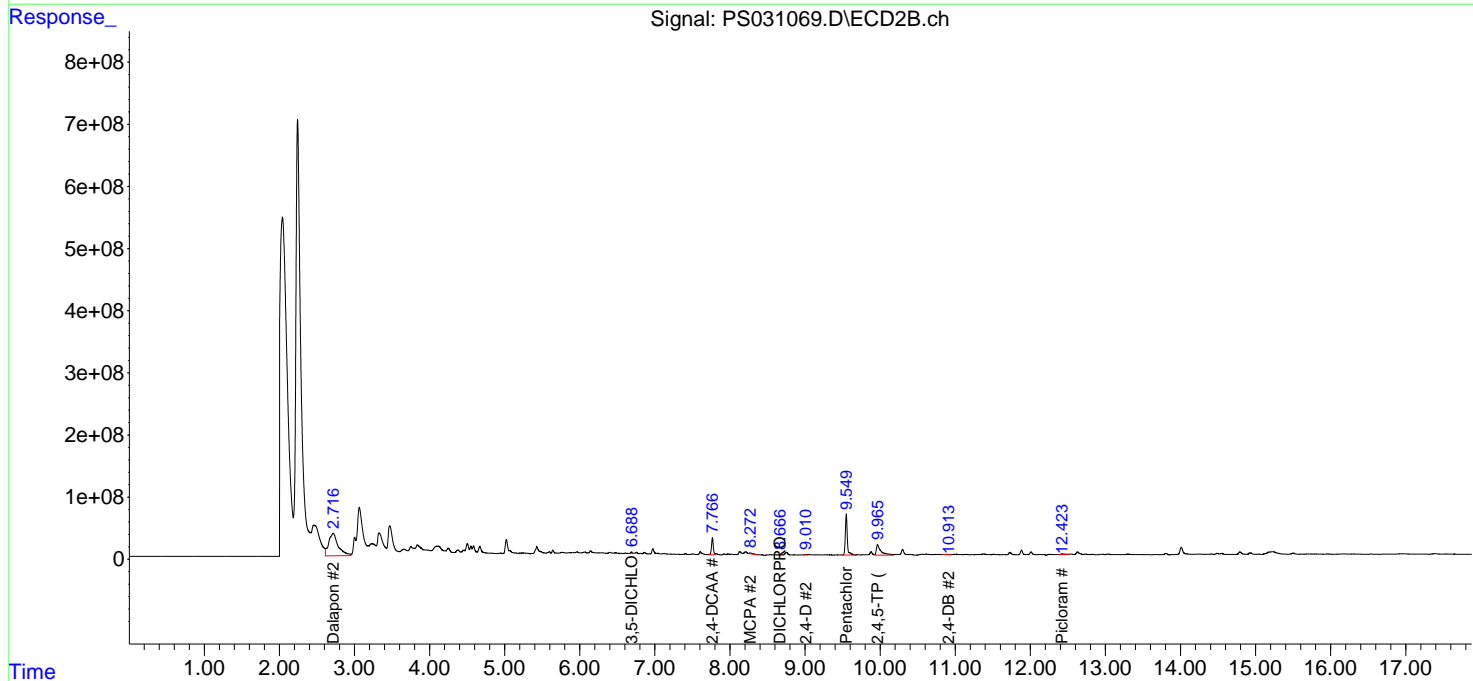
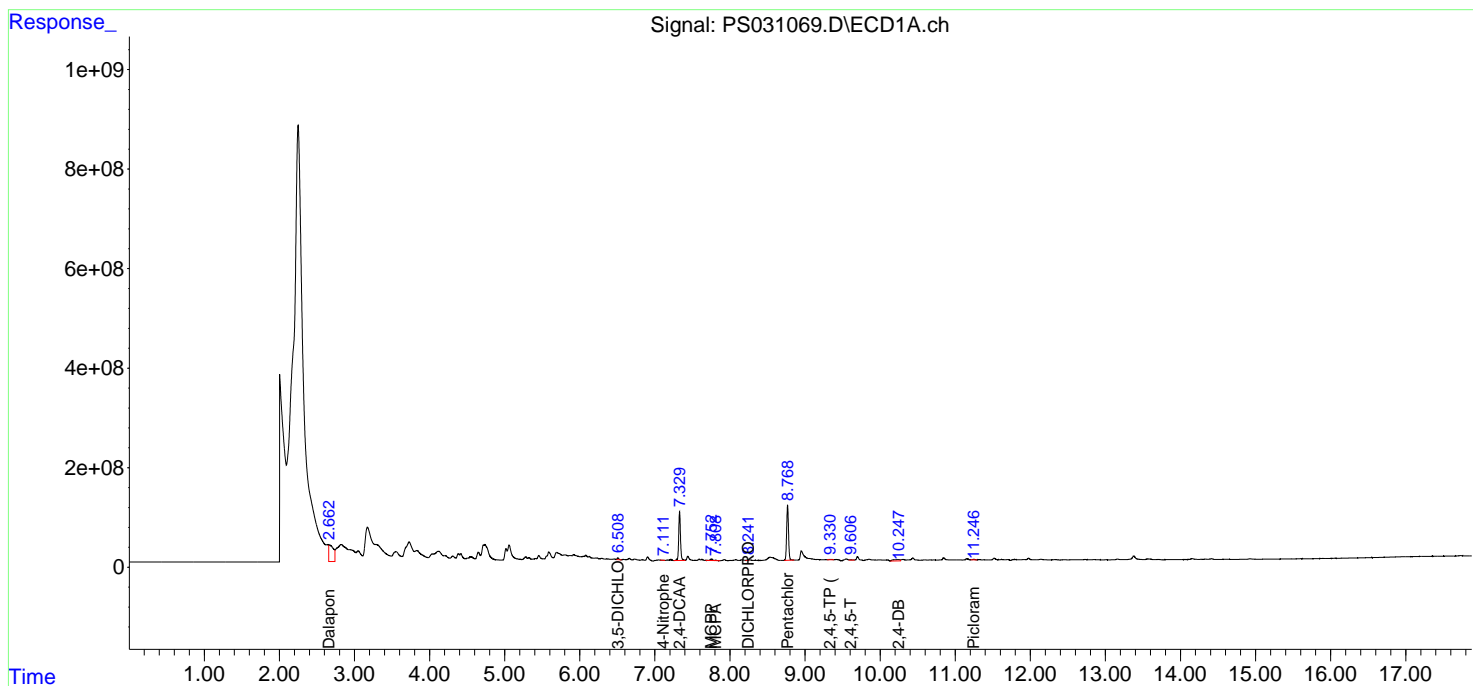
(f)=RT Delta > 1/2 Window (#)=Amounts differ by > 25% (m)=manual int.

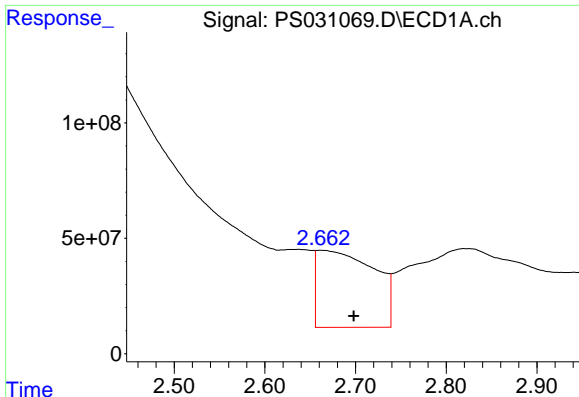
Data Path : Z:\pestpcbsrv\HPCHEM1\ECD_S\Data\PS071525\
 Data File : PS031069.D
 Signal(s) : Signal #1: ECD1A.ch Signal #2: ECD2B.ch
 Acq On : 16 Jul 2025 14:15
 Operator : AR\AJ
 Sample : Q2579-07
 Misc :
 ALS Vial : 44 Sample Multiplier: 1

Instrument :
 ECD_S
 ClientSampleId :

Integration File signal 1: autoint1.e
 Integration File signal 2: autoint2.e
 Quant Time: Jul 16 14:33:38 2025
 Quant Method : Z:\pestpcbsrv\HPCHEM1\ECD_S\Method\PS071125.M
 Quant Title : 8080.M
 QLast Update : Mon Jul 14 05:51:06 2025
 Response via : Initial Calibration
 Integrator: ChemStation

Volume Inj. : 1 µl
 Signal #1 Phase : ZB-MR1 Signal #2 Phase: ZB-MR2
 Signal #1 Info : 30M x 0.32mm x0.5 Signal #2 Info : 30M x 0.32mm x 0.25µm

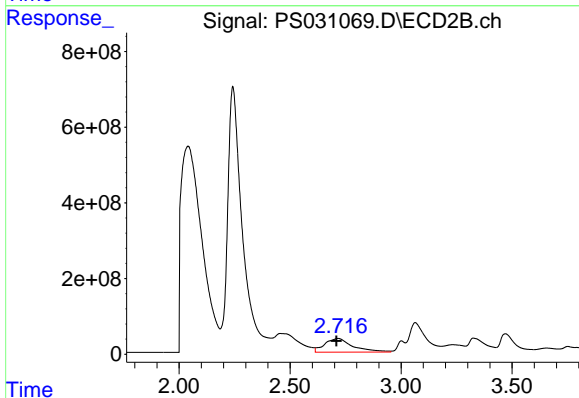




#1 Dalapon

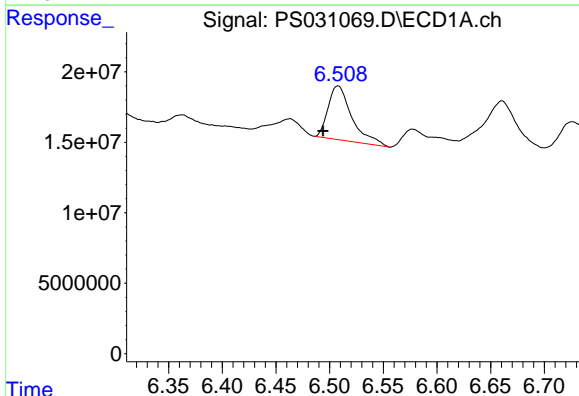
R.T.: 2.662 min
 Delta R.T.: -0.036 min
 Response: 1460831177
 Conc: 239.81 ng/ml

Instrument :
 ECD_S
 ClientSampleId :



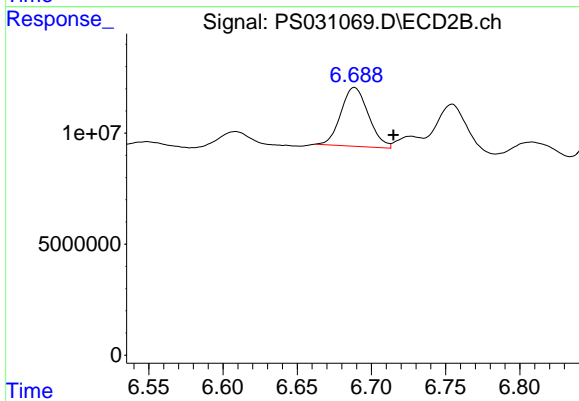
#1 Dalapon

R.T.: 2.716 min
 Delta R.T.: 0.008 min
 Response: 3154430512
 Conc: 1109.60 ng/ml



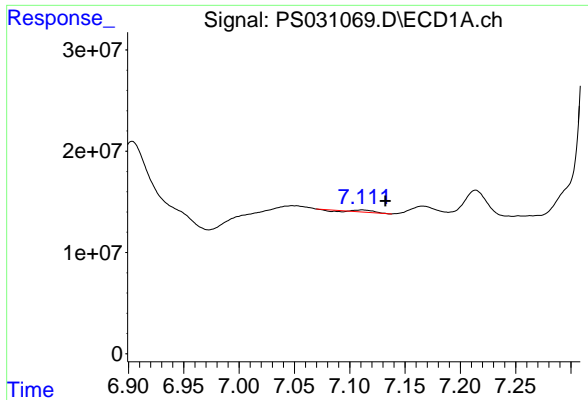
#2 3,5-DICHLOROBENZOIC ACID

R.T.: 6.508 min
 Delta R.T.: 0.014 min
 Response: 58914776
 Conc: 11.25 ng/ml



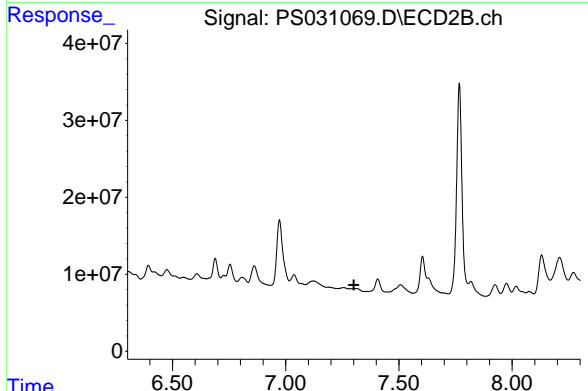
#2 3,5-DICHLOROBENZOIC ACID

R.T.: 6.689 min
 Delta R.T.: -0.026 min
 Response: 34164757
 Conc: 22.04 ng/ml

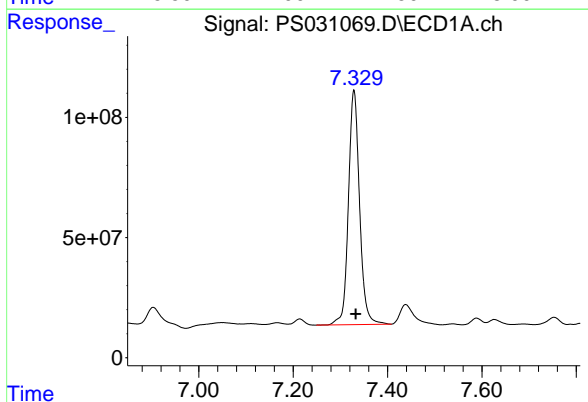


#3 4-Nitrophenol
 R.T.: 7.111 min
 Delta R.T.: -0.021 min
 Response: 2004852
 Conc: 1.49 ng/ml

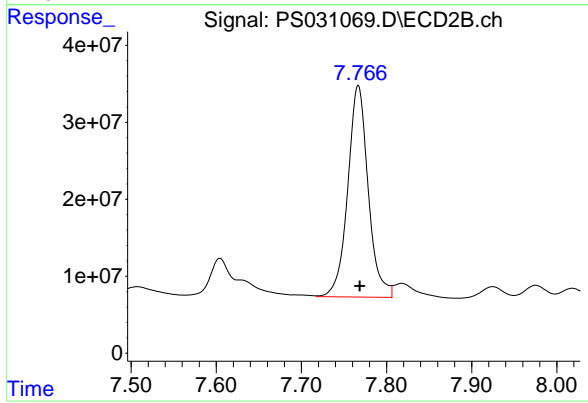
Instrument :
 ECD_S
 ClientSampleId :



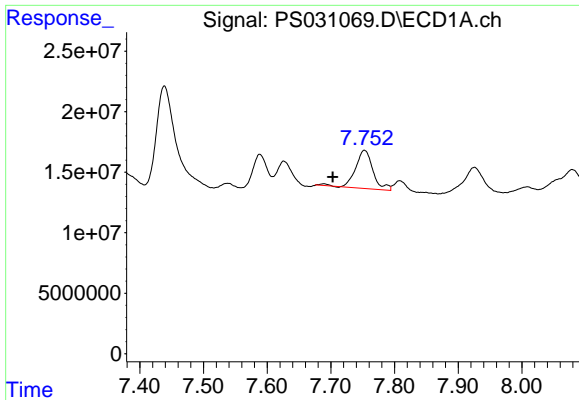
#3 4-Nitrophenol
 R.T.: 0.000 min
 Exp R.T. : 7.301 min
 Response: 0
 Conc: N.D.



#4 2,4-DCAA
 R.T.: 7.329 min
 Delta R.T.: -0.004 min
 Response: 1598625063
 Conc: 404.20 ng/ml

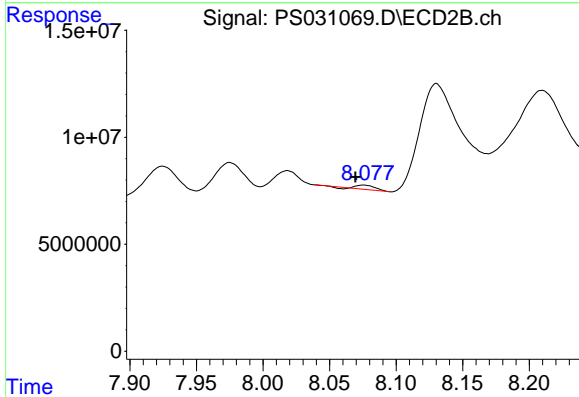


#4 2,4-DCAA
 R.T.: 7.767 min
 Delta R.T.: -0.002 min
 Response: 459816755
 Conc: 443.82 ng/ml

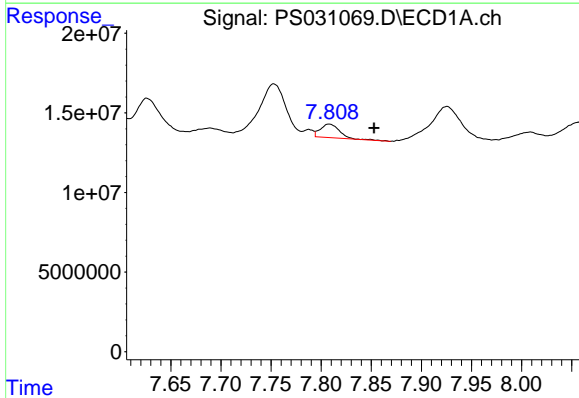


#6 MCPP
 R.T.: 7.753 min
 Delta R.T.: 0.050 min
 Response: 59568955
 Conc: 6.47 ug/ml

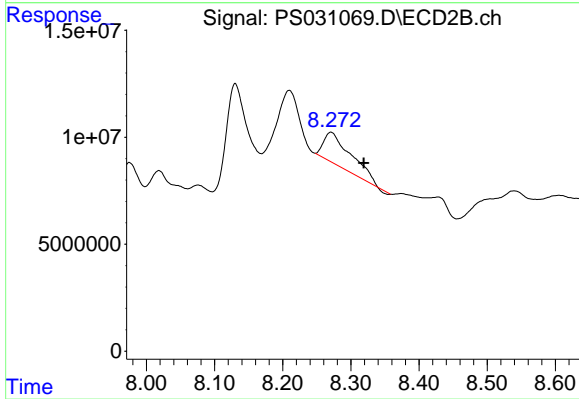
Instrument :
 ECD_S
 ClientSampleId :



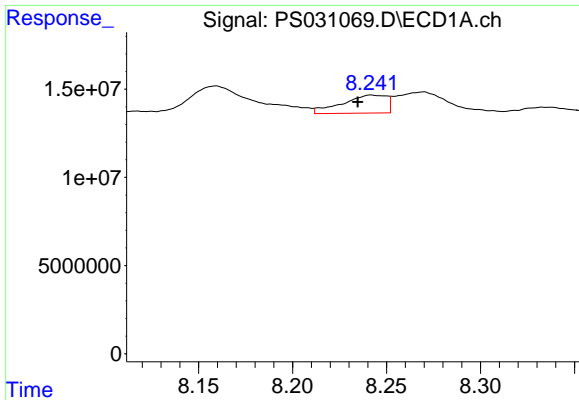
#6 MCPP
 R.T.: 8.076 min
 Delta R.T.: 0.006 min
 Response: 1595032
 Conc: N.D.



#7 MCPA
 R.T.: 7.808 min
 Delta R.T.: -0.044 min
 Response: 11398996
 Conc: 1.05 ug/ml



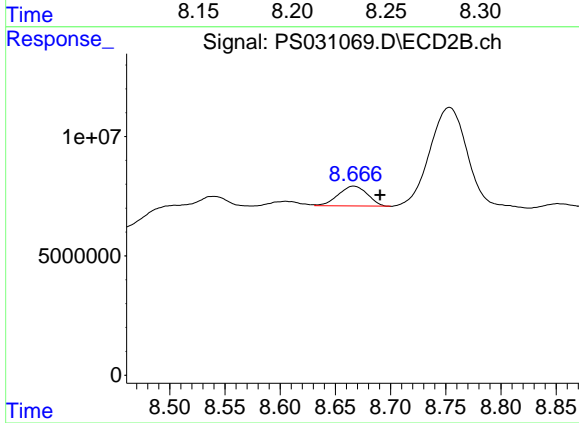
#7 MCPA
 R.T.: 8.271 min
 Delta R.T.: -0.048 min
 Response: 40938402
 Conc: 12.77 ug/ml



#8 DICHLORPROP

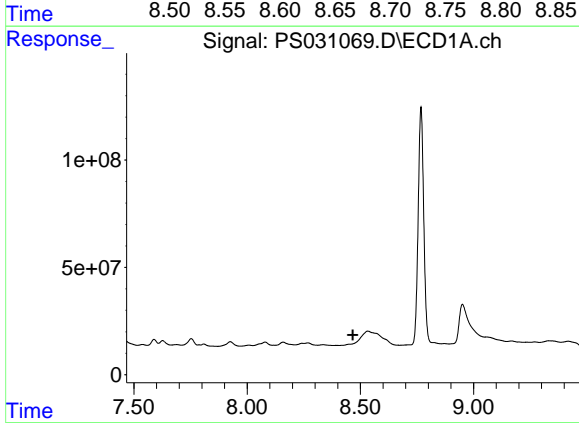
R.T.: 8.243 min
 Delta R.T.: 0.009 min
 Response: 16790248
 Conc: 4.93 ng/ml

Instrument :
 ECD_S
 ClientSampleId :



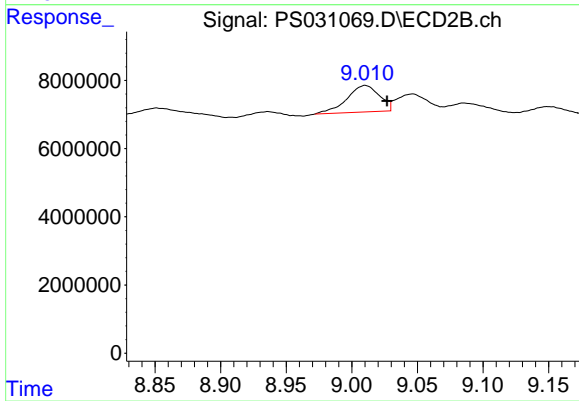
#8 DICHLORPROP

R.T.: 8.667 min
 Delta R.T.: -0.024 min
 Response: 15227291
 Conc: 10.02 ng/ml



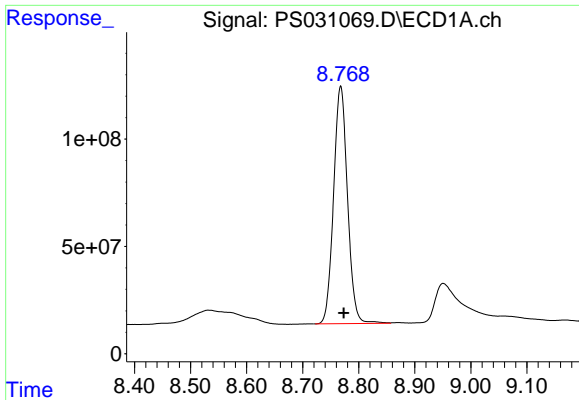
#9 2,4-D

R.T.: 0.000 min
 Exp R.T. : 8.467 min
 Response: 0
 Conc: N.D.



#9 2,4-D

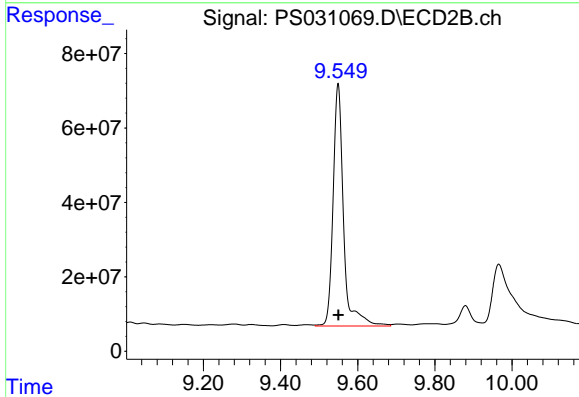
R.T.: 9.010 min
 Delta R.T.: -0.017 min
 Response: 13442971
 Conc: 7.91 ng/ml



#10 Pentachlorophenol

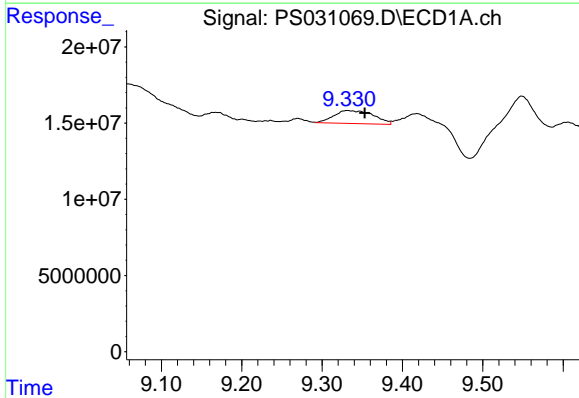
R.T.: 8.768 min
 Delta R.T.: -0.006 min
 Response: 1908325479
 Conc: 37.97 ng/ml

Instrument :
 ECD_S
 ClientSampleId :



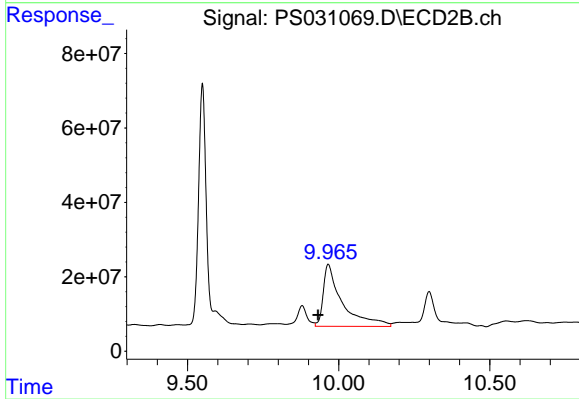
#10 Pentachlorophenol

R.T.: 9.549 min
 Delta R.T.: -0.001 min
 Response: 1228205772
 Conc: 31.87 ng/ml



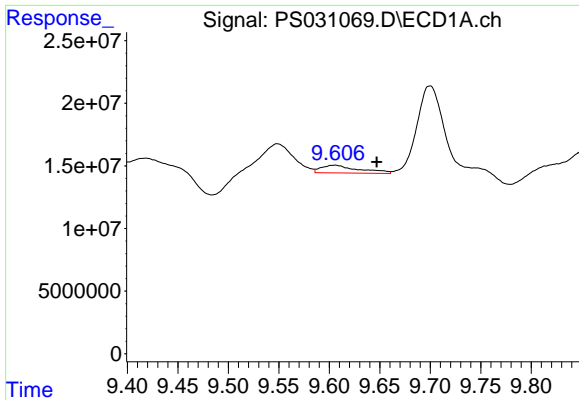
#11 2,4,5-TP (SILVEX)

R.T.: 9.332 min
 Delta R.T.: -0.021 min
 Response: 29170511
 Conc: 1.57 ng/ml



#11 2,4,5-TP (SILVEX)

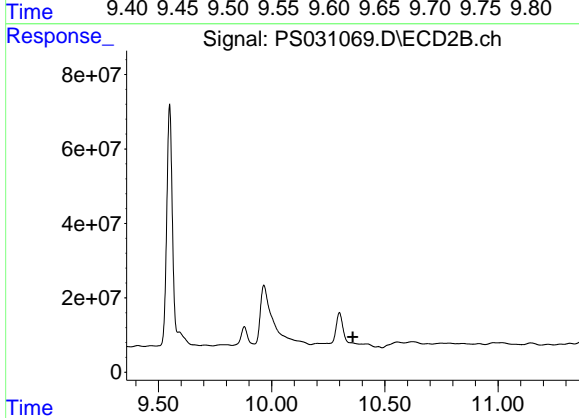
R.T.: 9.966 min
 Delta R.T.: 0.034 min
 Response: 728227835
 Conc: 49.62 ng/ml



#12 2,4,5-T

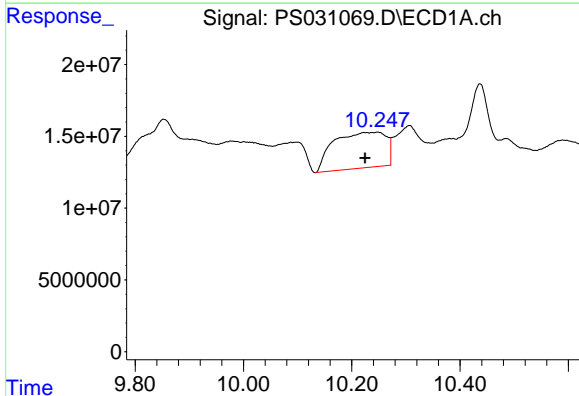
R.T.: 9.605 min
 Delta R.T.: -0.042 min
 Response: 16042929
 Conc: 1.05 ng/ml

Instrument :
 ECD_S
 ClientSampleId :



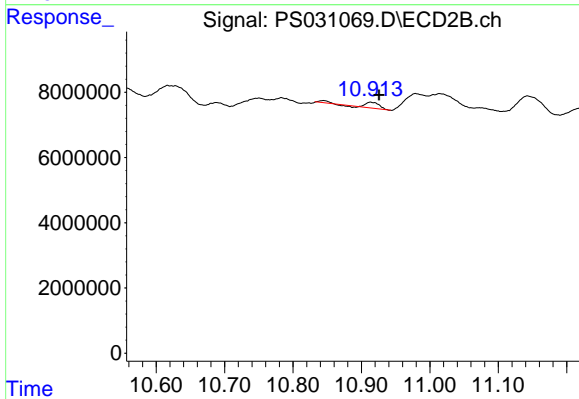
#12 2,4,5-T

R.T.: 0.000 min
 Exp R.T. : 10.358 min
 Response: 0
 Conc: N.D.



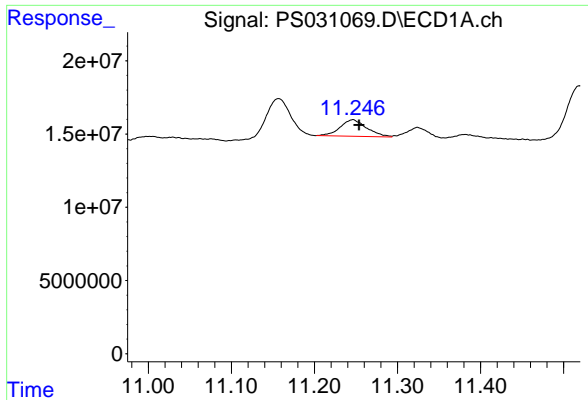
#13 2,4-DB

R.T.: 10.248 min
 Delta R.T.: 0.023 min
 Response: 167988937
 Conc: 77.39 ng/ml



#13 2,4-DB

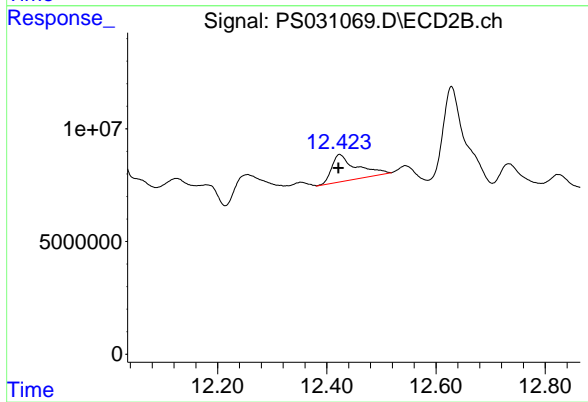
R.T.: 10.914 min
 Delta R.T.: -0.012 min
 Response: 2450032
 Conc: 2.07 ng/ml



#15 Picloram

R.T.: 11.246 min
Delta R.T.: -0.008 min
Response: 24998548
Conc: 1.72 ng/ml

Instrument :
ECD_S
ClientSampleId :



#15 Picloram

R.T.: 12.424 min
Delta R.T.: 0.003 min
Response: 37736341
Conc: 1.61 ng/ml