

Data Path : Z:\pestpcbsrv\HPCHEM1\ECD_S\Data\PS071618\
 Data File : PS001069.D
 Signal(s) : Signal #1: ECD1A.ch Signal #2: ECD2B.ch
 Acq On : 17 Jul 2018 02:03
 Operator : UA
 Sample : I.BLK
 Misc :
 ALS Vial : 2 Sample Multiplier: 1

Instrument :
 ECD_S
 ClientSampleId :

Integration File signal 1: autoint1.e
 Integration File signal 2: autoint2.e
 Quant Time: Jul 17 04:29:16 2018
 Quant Method : Z:\pestpcbsrv\HPCHEM1\ECD_S\Method\PS070818.M
 Quant Title : 8080.M
 QLast Update : Mon Jul 09 02:00:25 2018
 Response via : Initial Calibration
 Integrator: ChemStation

Volume Inj. : 2 µl
 Signal #1 Phase : Rtx-CLPesticides Signal #2 Phase: Rtx-CLPesticides2
 Signal #1 Info : 30M x 0.32mm x0.5 Signal #2 Info : 30M x 0.32mm x 0.25µm

Compound	RT#1	RT#2	Resp#1	Resp#2	ng/ml	ng/ml

System Monitoring Compounds						
4) S 2,4-DCAA	11.647	11.061	92060387	84121408	446.202	386.238

Target Compounds

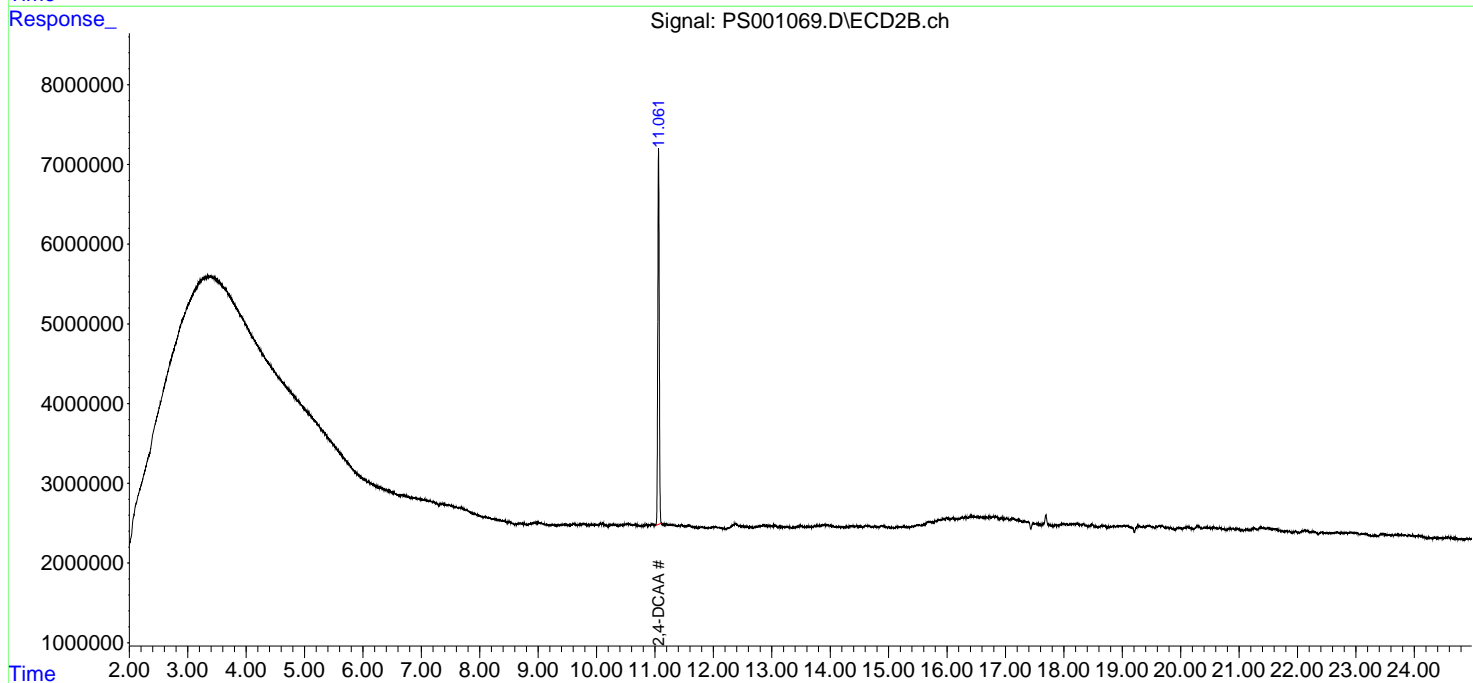
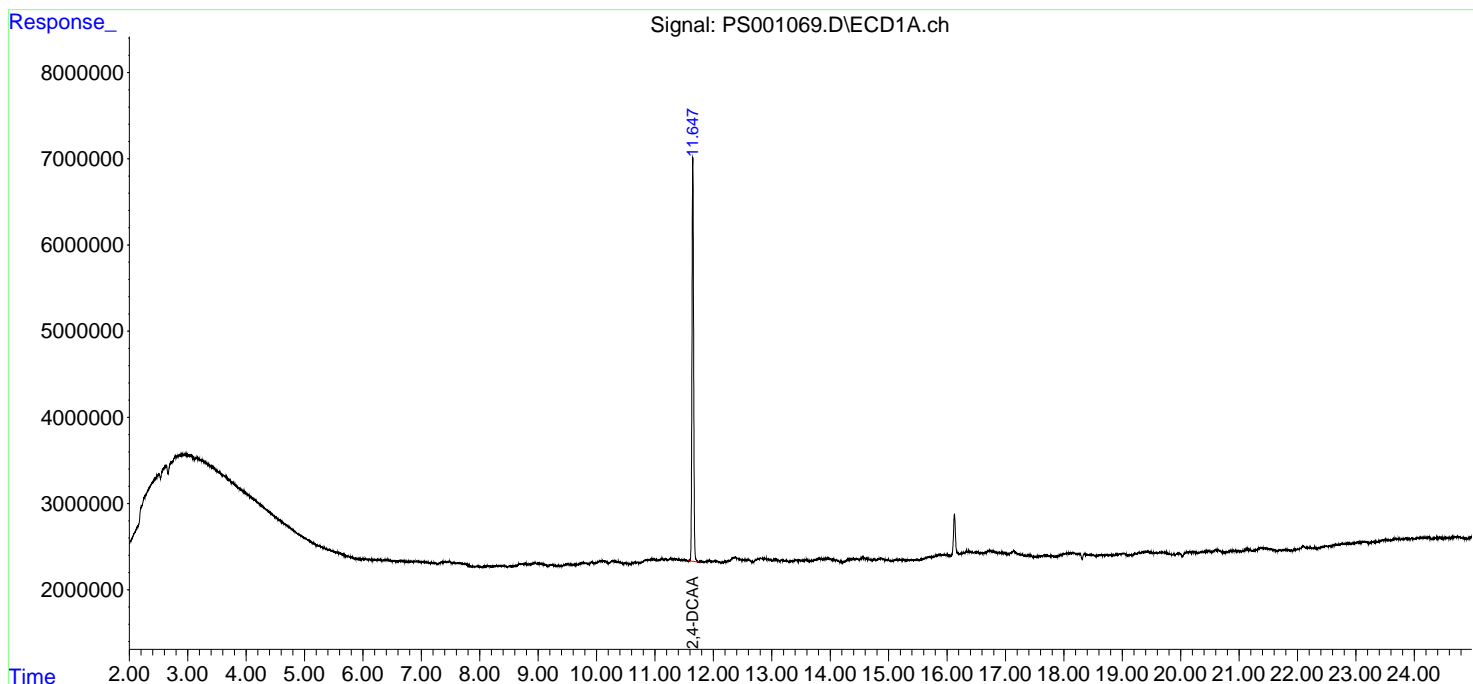
(f)=RT Delta > 1/2 Window (#)=Amounts differ by > 25% (m)=manual int.

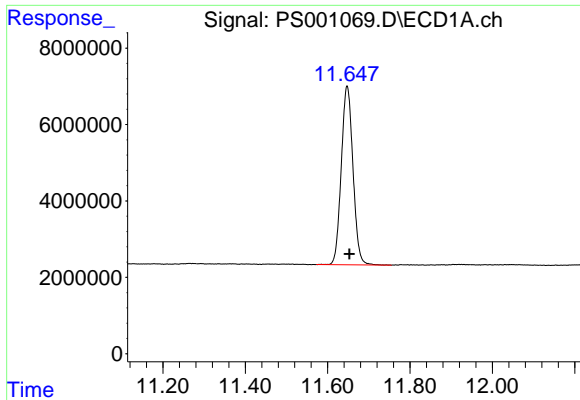
Data Path : Z:\pestpcbsrv\HPCHEM1\ECD_S\Data\PS071618\
 Data File : PS001069.D
 Signal(s) : Signal #1: ECD1A.ch Signal #2: ECD2B.ch
 Acq On : 17 Jul 2018 02:03
 Operator : UA
 Sample : I.BLK
 Misc :
 ALS Vial : 2 Sample Multiplier: 1

Instrument :
 ECD_S
 ClientSampleId :

Integration File signal 1: autoint1.e
 Integration File signal 2: autoint2.e
 Quant Time: Jul 17 04:29:16 2018
 Quant Method : Z:\pestpcbsrv\HPCHEM1\ECD_S\Method\PS070818.M
 Quant Title : 8080.M
 QLast Update : Mon Jul 09 02:00:25 2018
 Response via : Initial Calibration
 Integrator: ChemStation

Volume Inj. : 2 µl
 Signal #1 Phase : Rtx-CLPesticides Signal #2 Phase: Rtx-CLPesticides2
 Signal #1 Info : 30M x 0.32mm x0.5 Signal #2 Info : 30M x 0.32mm x 0.25µm

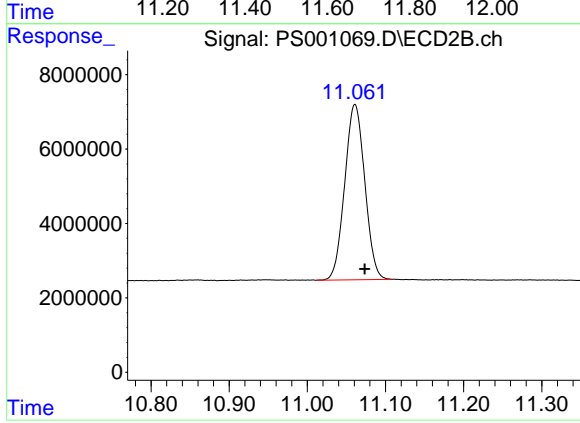




#4 2,4-DCAA

R.T.: 11.647 min
Delta R.T.: -0.006 min
Response: 92060387
Conc: 446.20 ng/ml

Instrument :
ECD_S
ClientSampleId :



#4 2,4-DCAA

R.T.: 11.061 min
Delta R.T.: -0.013 min
Response: 84121408
Conc: 386.24 ng/ml