

Data Path : Z:\pestpcbsrv\HPCHEM1\ECD\_S\Data\PS071620\  
 Data File : PS011253.D  
 Signal(s) : Signal #1: ECD1A.ch Signal #2: ECD2B.ch  
 Acq On : 16 Jul 2020 19:09  
 Operator : DD\AJ  
 Sample : L3304-03  
 Misc :  
 ALS Vial : 16 Sample Multiplier: 1

**Instrument :**  
 ECD\_S  
**ClientSampleId :**  
 FK-GF-02-058-B

**Manual Integrations**  
**APPROVED**  
 Ankita  
 7/17/2020 10:11:43 AM

Integration File signal 1: autoint1.e  
 Integration File signal 2: autoint2.e  
 Quant Time: Jul 17 02:17:12 2020  
 Quant Method : Z:\pestpcbsrv\HPCHEM1\ECD\_S\Method\PS071320.M  
 Quant Title : 8080.M  
 QLast Update : Mon Jul 13 16:10:29 2020  
 Response via : Initial Calibration  
 Integrator: ChemStation

Volume Inj. : 2 µl  
 Signal #1 Phase : Rtx-CLPesticides Signal #2 Phase: Rtx-CLPesticides2  
 Signal #1 Info : 30M x 0.32mm x0.5 Signal #2 Info : 30M x 0.32mm x 0.25µm

Compound	RT#1	RT#2	Resp#1	Resp#2	ng/ml	ng/ml
-----						
System Monitoring Compounds						
4) S 2,4-DCAA	7.225	6.916	251.8E6	154.5E6	259.449	274.455m

Target Compounds

(f)=RT Delta > 1/2 Window (#)=Amounts differ by > 25% (m)=manual int.

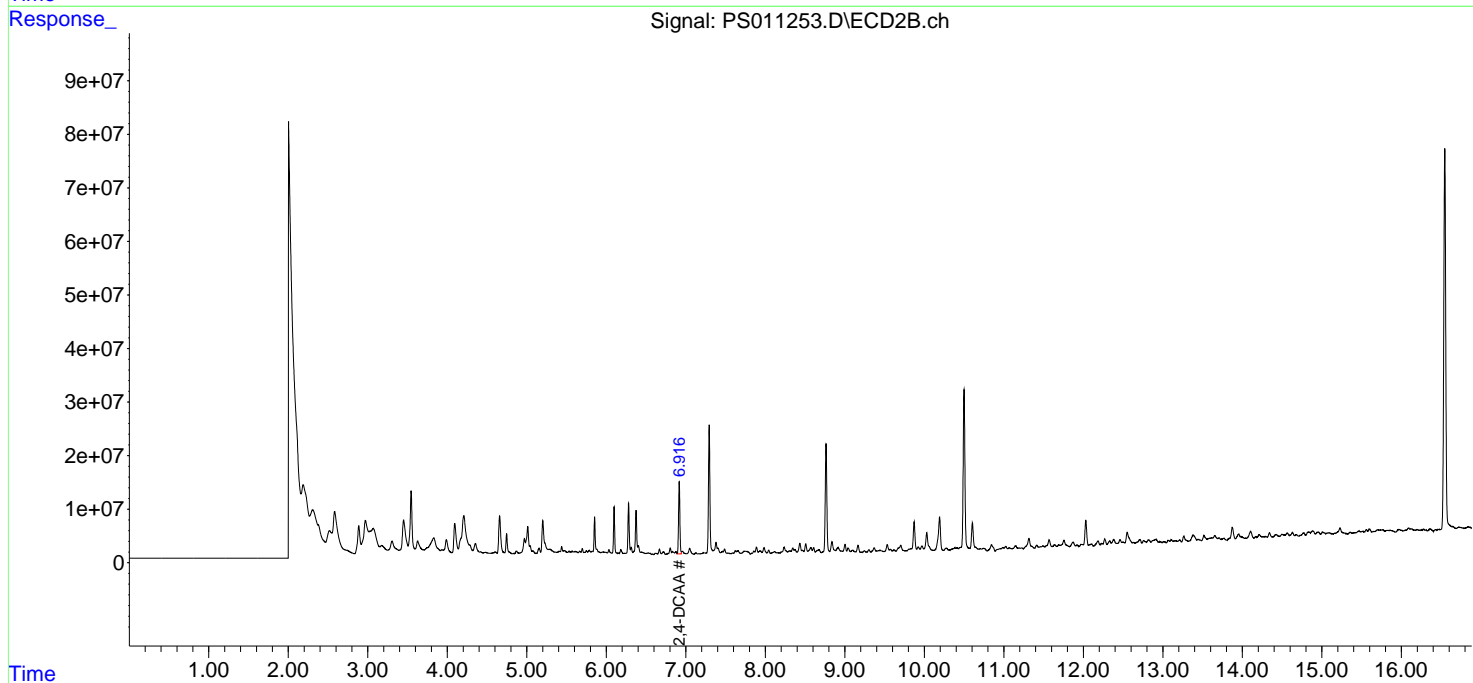
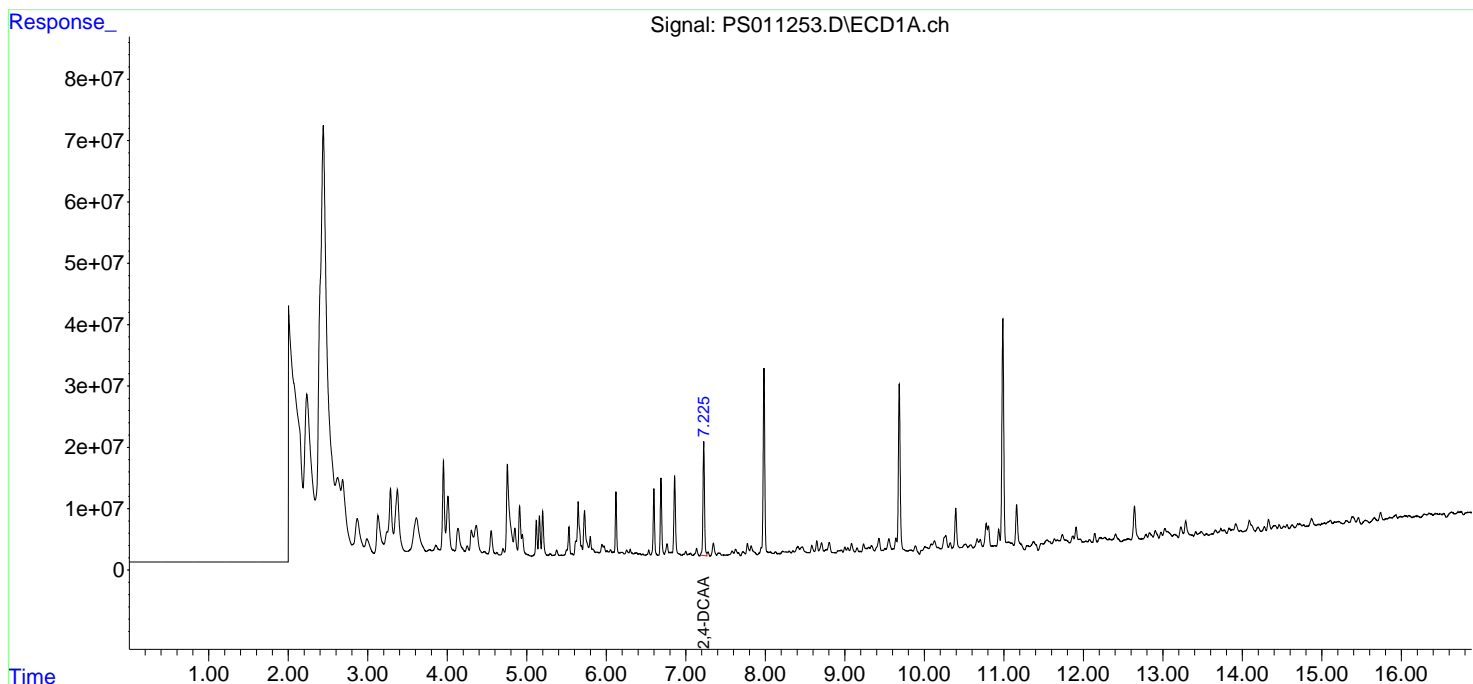
Data Path : Z:\pestpcbsrv\HPCHEM1\ECD\_S\Data\PS071620\  
 Data File : PS011253.D  
 Signal(s) : Signal #1: ECD1A.ch Signal #2: ECD2B.ch  
 Acq On : 16 Jul 2020 19:09  
 Operator : DD\AJ  
 Sample : L3304-03  
 Misc :  
 ALS Vial : 16 Sample Multiplier: 1

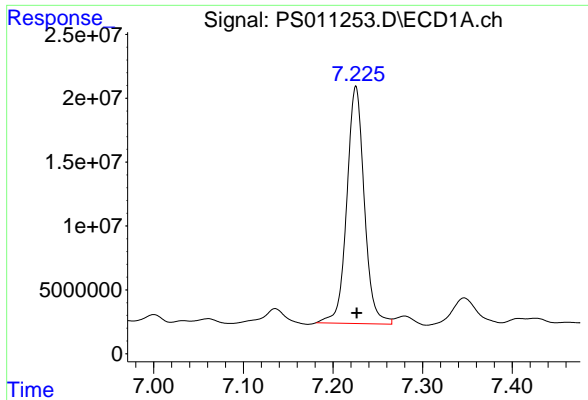
**Instrument :**  
 ECD\_S  
**ClientSampled :**  
 FK-GF-02-058-B

**Manual Integrations**  
**APPROVED**  
 Ankita  
 7/17/2020 10:11:43 AM

Integration File signal 1: autoint1.e  
 Integration File signal 2: autoint2.e  
 Quant Time: Jul 17 02:17:12 2020  
 Quant Method : Z:\pestpcbsrv\HPCHEM1\ECD\_S\Method\PS071320.M  
 Quant Title : 8080.M  
 QLast Update : Mon Jul 13 16:10:29 2020  
 Response via : Initial Calibration  
 Integrator: ChemStation

Volume Inj. : 2 µl  
 Signal #1 Phase : Rtx-CLPesticides Signal #2 Phase: Rtx-CLPesticides2  
 Signal #1 Info : 30M x 0.32mm x 0.5 Signal #2 Info : 30M x 0.32mm x 0.25µm





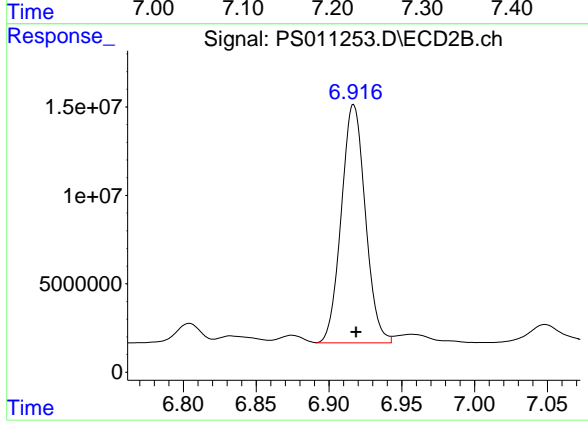
#4 2,4-DCAA

R.T.: 7.225 min  
Delta R.T.: 0.000 min  
Response: 251752804  
Conc: 259.45 ng/ml

Instrument :  
ECD\_S  
ClientSampleId :  
FK-GF-02-058-B

Manual Integrations  
APPROVED

Ankita  
7/17/2020 10:11:43 AM



#4 2,4-DCAA

R.T.: 6.916 min  
Delta R.T.: -0.002 min  
Response: 154524490  
Conc: 274.46 ng/ml m