

Data Path : Z:\pestpcbsrv\HPCHEM1\ECD_S\Data\PS071718\
Data File : PS001107.D
Signal(s) : Signal #1: ECD1A.ch Signal #2: ECD2B.ch
Acq On : 18 Jul 2018 00:59
Operator : UA
Sample : I.BLK
Misc :
ALS Vial : 2 Sample Multiplier: 1

Integration File signal 1: autoint1.e
Integration File signal 2: autoint2.e
Quant Time: Jul 18 03:24:19 2018
Quant Method : Z:\pestpcbsrv\HPCHEM1\ECD_S\Method\PS070818.M
Quant Title : 8080.M
QLast Update : Mon Jul 09 02:00:25 2018
Response via : Initial Calibration
Integrator: ChemStation

Volume Inj. : 2 µl
Signal #1 Phase : Rtx-CLPesticides Signal #2 Phase: Rtx-CLPesticides2
Signal #1 Info : 30M x 0.32mm x0.5 Signal #2 Info : 30M x 0.32mm x 0.25µm

Compound	RT#1	RT#2	Resp#1	Resp#2	ng/ml	ng/ml

System Monitoring Compounds						
4) S 2,4-DCAA	11.643	11.058	98932465	90192846	479.510	414.114

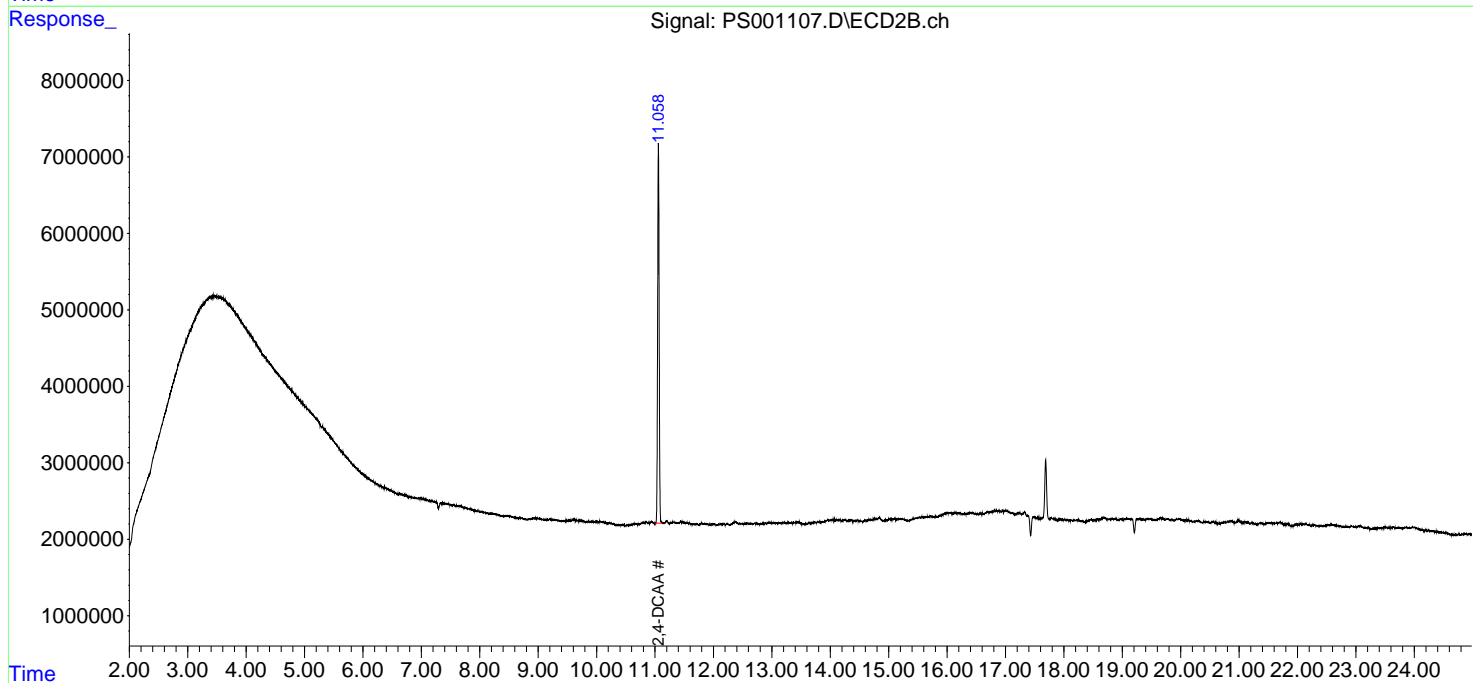
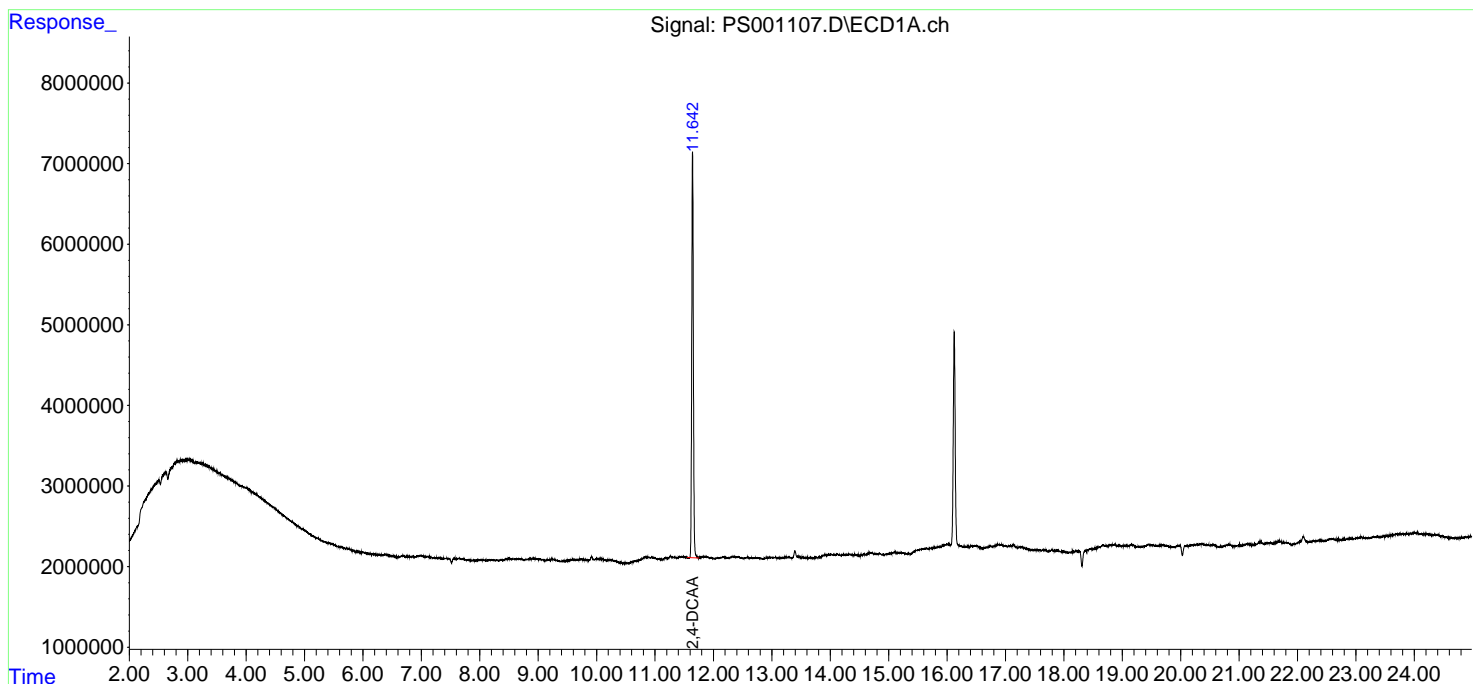
Target Compounds

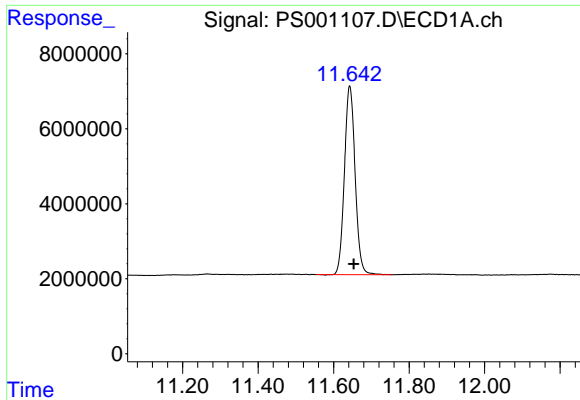
(f)=RT Delta > 1/2 Window (#)=Amounts differ by > 25% (m)=manual int.

Data Path : Z:\pestpcbsrv\HPCHEM1\ECD_S\Data\PS071718\
 Data File : PS001107.D
 Signal(s) : Signal #1: ECD1A.ch Signal #2: ECD2B.ch
 Acq On : 18 Jul 2018 00:59
 Operator : UA
 Sample : I.BLK
 Misc :
 ALS Vial : 2 Sample Multiplier: 1

Integration File signal 1: autoint1.e
 Integration File signal 2: autoint2.e
 Quant Time: Jul 18 03:24:19 2018
 Quant Method : Z:\pestpcbsrv\HPCHEM1\ECD_S\Method\PS070818.M
 Quant Title : 8080.M
 QLast Update : Mon Jul 09 02:00:25 2018
 Response via : Initial Calibration
 Integrator: ChemStation

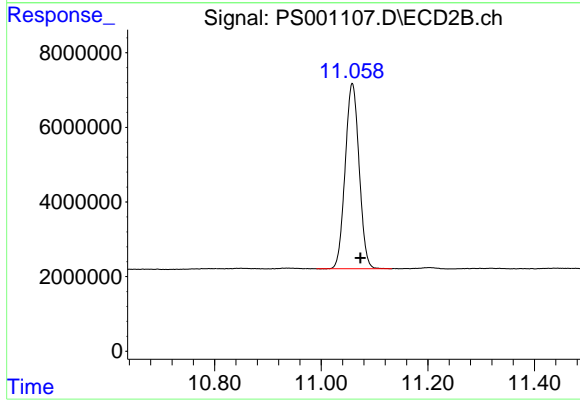
Volume Inj. : 2 µl
 Signal #1 Phase : Rtx-CLPesticides Signal #2 Phase: Rtx-CLPesticides2
 Signal #1 Info : 30M x 0.32mm x 0.5 Signal #2 Info : 30M x 0.32mm x 0.25µm





#4 2,4-DCAA

R.T.: 11.643 min
Delta R.T.: -0.011 min
Response: 98932465
Conc: 479.51 ng/ml



#4 2,4-DCAA

R.T.: 11.058 min
Delta R.T.: -0.015 min
Response: 90192846
Conc: 414.11 ng/ml