

Data Path : Z:\pestpcbsrv\HPCHEM1\ECD_S\Data\PS071725\
 Data File : PS031103.D
 Signal(s) : Signal #1: ECD1A.ch Signal #2: ECD2B.ch
 Acq On : 17 Jul 2025 18:07
 Operator : AR\AJ
 Sample : Q2586-01
 Misc :
 ALS Vial : 13 Sample Multiplier: 1

Instrument :
 ECD_S
 ClientSampleId :
 TP-16

Integration File signal 1: autoint1.e
 Integration File signal 2: autoint2.e
 Quant Time: Jul 17 22:59:10 2025
 Quant Method : Z:\pestpcbsrv\HPCHEM1\ECD_S\Method\PS071125.M
 Quant Title : 8080.M
 QLast Update : Mon Jul 14 05:51:06 2025
 Response via : Initial Calibration
 Integrator: ChemStation

Volume Inj. : 1 µl
 Signal #1 Phase : ZB-MR1 Signal #2 Phase: ZB-MR2
 Signal #1 Info : 30M x 0.32mm x0.5 Signal #2 Info : 30M x 0.32mm x 0.25µm

Compound	RT#1	RT#2	Resp#1	Resp#2	ng/ml	ng/ml

System Monitoring Compounds						
4) S 2,4-DCAA	7.324	7.731f	1272.6E6	3466.0E6	321.774	3345.441 #
Target Compounds						
1) T Dalapon	2.652f	2.673f	1477.1E6	1236.6E6	242.473	434.976 #
2) T 3,5-DICHL...	6.535f	6.685f	754.3E6	11837715	143.995	7.636 #
3) T 4-Nitroph...	7.147	7.297	8054.8E6	2329444	5966.491	1.336 #
5) T DICAMBA	7.528	7.969	29987551	14348571	1.911	2.216
6) T MCPP	0.000	8.077	0	17256213	N.D.	8.071
7) T MCPA	7.855	8.297	101.9E6	118.8E6	9.345	37.048 #
8) T DICHLORPROP	8.236	8.708	5562404	151.8E6	1.634	99.925 #
9) T 2,4-D	8.464	0.000	11612704	0	3.772	N.D. #
10) T Pentachlo...	8.774	9.535	250.9E6	146.4E6	4.992	3.800
11) T 2,4,5-TP ...	9.349	9.936	175.2E6	254.8E6	9.415	17.360 #
12) T 2,4,5-T	9.693f	10.390f	106.1E6	7279.9E6	6.977	520.300 #
13) T 2,4-DB	10.180f	10.901	2087.3E6	480.4E6	961.549	406.017 #
14) T DINOSEB	11.412f	11.289	4866.8E6	5059.0E6	369.150	445.669
15) T Picloram	11.219f	12.407	3315.7E6	9243.9E6	227.542	393.683 #
16) T DCPA	11.712	12.343	12439.6E6	10281.3E6	519.675	455.895

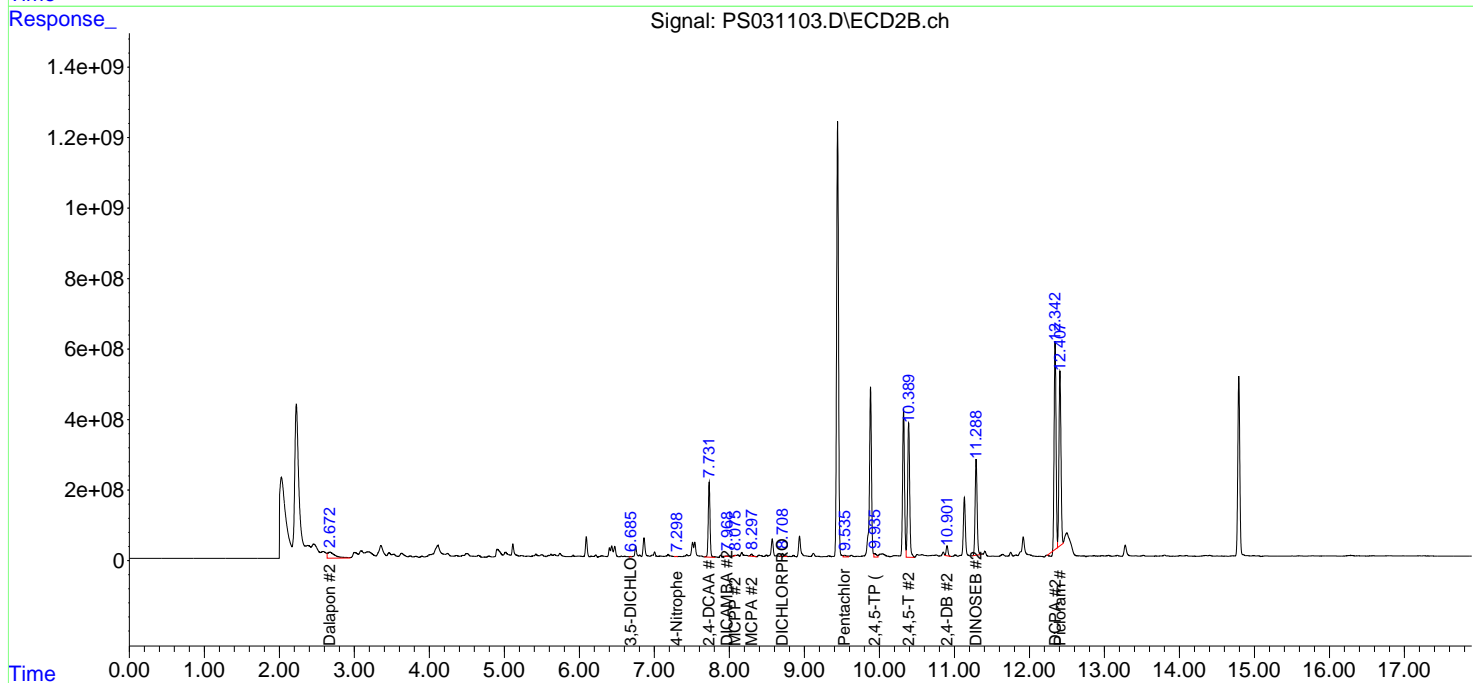
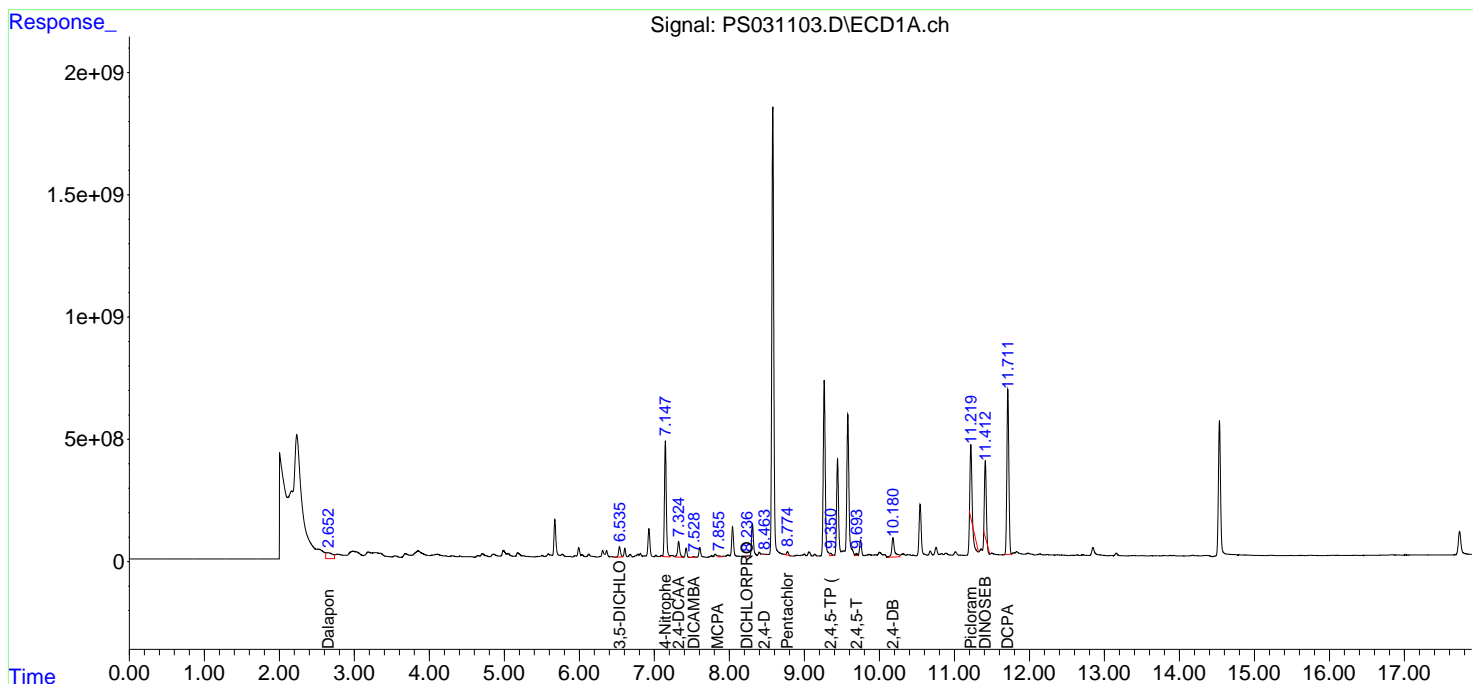
(f)=RT Delta > 1/2 Window (#)=Amounts differ by > 25% (m)=manual int.

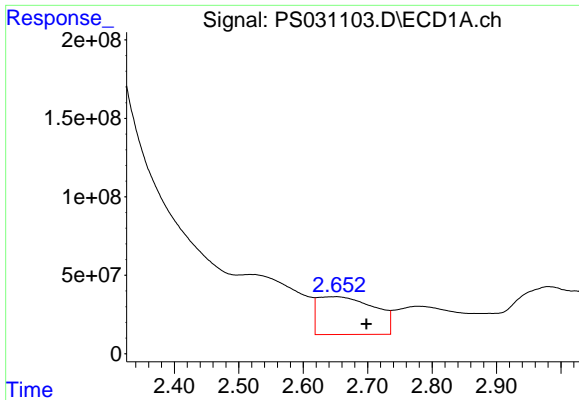
Data Path : Z:\pestpcbsrv\HPCHEM1\ECD_S\Data\PS071725\
 Data File : PS031103.D
 Signal(s) : Signal #1: ECD1A.ch Signal #2: ECD2B.ch
 Acq On : 17 Jul 2025 18:07
 Operator : AR\AJ
 Sample : Q2586-01
 Misc :
 ALS Vial : 13 Sample Multiplier: 1

Instrument :
 ECD_S
 ClientSampleId :
 TP-16

Integration File signal 1: autoint1.e
 Integration File signal 2: autoint2.e
 Quant Time: Jul 17 22:59:10 2025
 Quant Method : Z:\pestpcbsrv\HPCHEM1\ECD_S\Method\PS071125.M
 Quant Title : 8080.M
 QLast Update : Mon Jul 14 05:51:06 2025
 Response via : Initial Calibration
 Integrator: ChemStation

Volume Inj. : 1 µl
 Signal #1 Phase : ZB-MR1 Signal #2 Phase: ZB-MR2
 Signal #1 Info : 30M x 0.32mm x0.5 Signal #2 Info : 30M x 0.32mm x 0.25µm

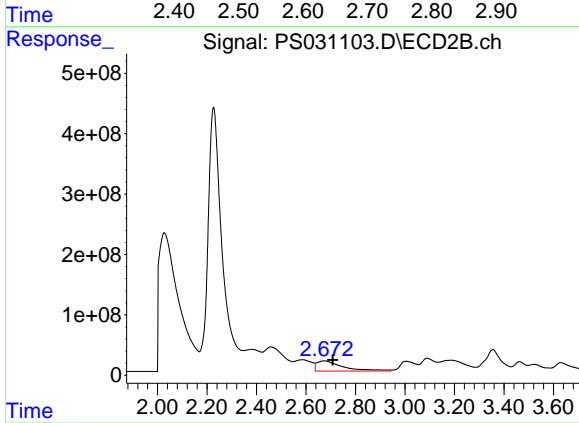




#1 Dalapon

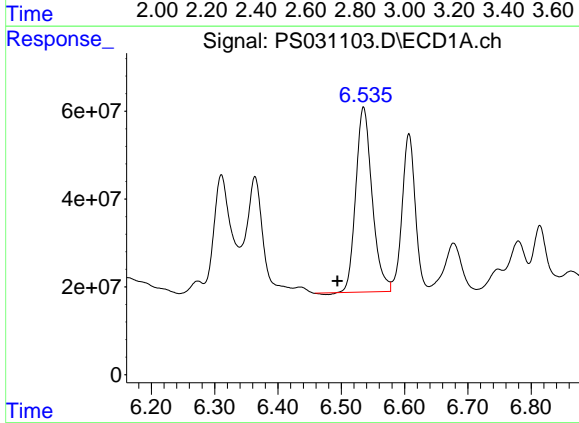
R.T.: 2.652 min
 Delta R.T.: -0.046 min
 Response: 1477079053
 Conc: 242.47 ng/ml

Instrument :
 ECD_S
 ClientSampleId :
 TP-16



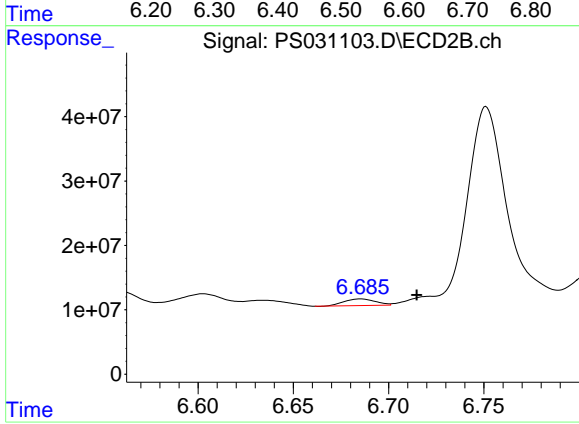
#1 Dalapon

R.T.: 2.673 min
 Delta R.T.: -0.035 min
 Response: 1236574776
 Conc: 434.98 ng/ml



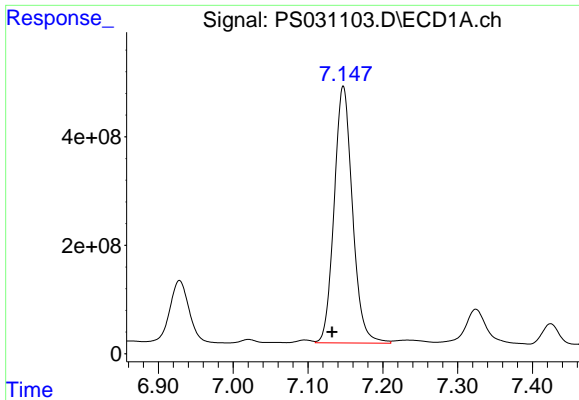
#2 3,5-DICHLOROBENZOIC ACID

R.T.: 6.535 min
 Delta R.T.: 0.041 min
 Response: 754332865
 Conc: 144.00 ng/ml



#2 3,5-DICHLOROBENZOIC ACID

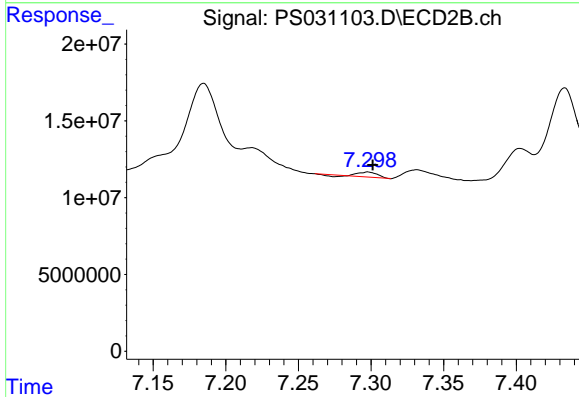
R.T.: 6.685 min
 Delta R.T.: -0.030 min
 Response: 11837715
 Conc: 7.64 ng/ml



#3 4-Nitrophenol

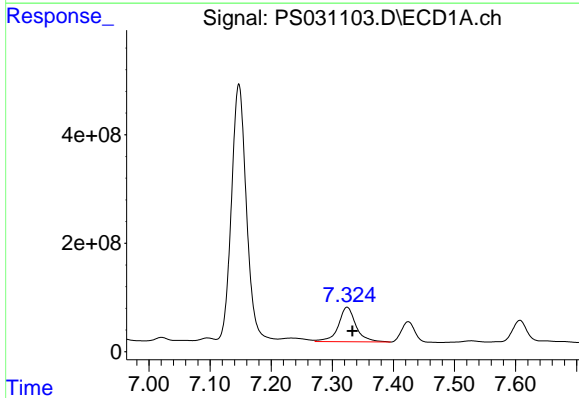
R.T.: 7.147 min
 Delta R.T.: 0.015 min
 Response: 8054809045
 Conc: 5966.49 ng/ml

Instrument :
 ECD_S
 ClientSampleId :
 TP-16



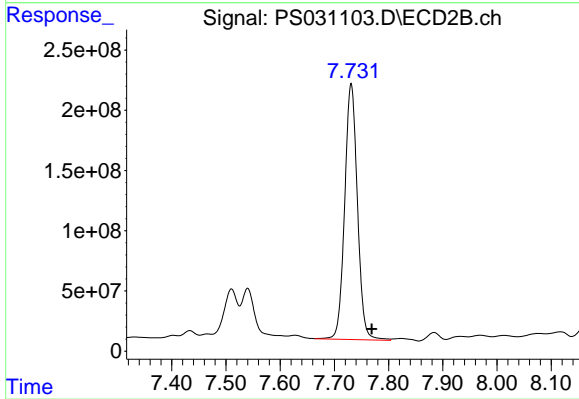
#3 4-Nitrophenol

R.T.: 7.297 min
 Delta R.T.: -0.004 min
 Response: 2329444
 Conc: 1.34 ng/ml



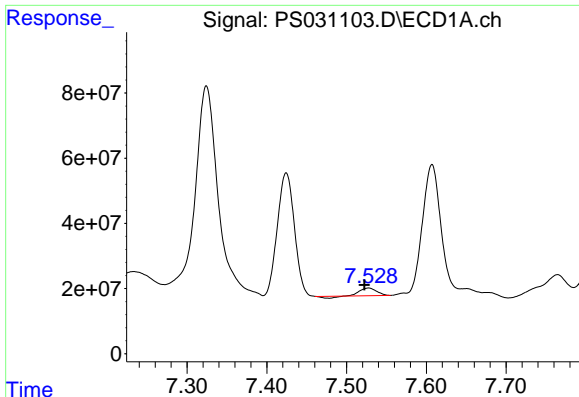
#4 2,4-DCAA

R.T.: 7.324 min
 Delta R.T.: -0.009 min
 Response: 1272639452
 Conc: 321.77 ng/ml



#4 2,4-DCAA

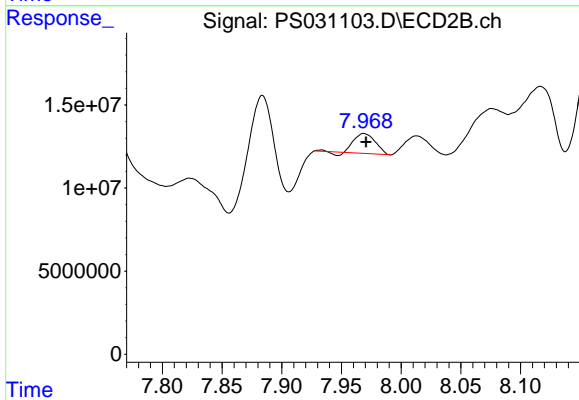
R.T.: 7.731 min
 Delta R.T.: -0.038 min
 Response: 3465986165
 Conc: 3345.44 ng/ml



#5 DICAMBA

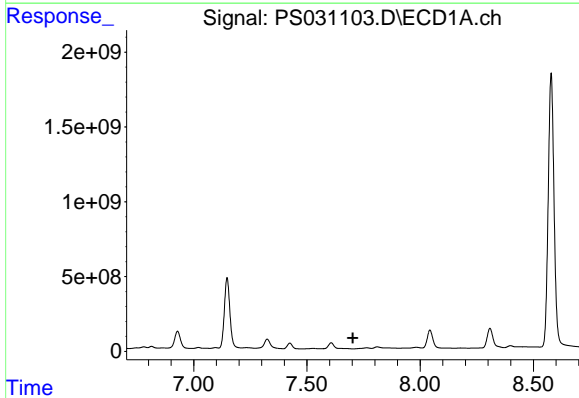
R.T.: 7.528 min
 Delta R.T.: 0.005 min
 Response: 29987551
 Conc: 1.91 ng/ml

Instrument :
 ECD_S
 ClientSampleId :
 TP-16



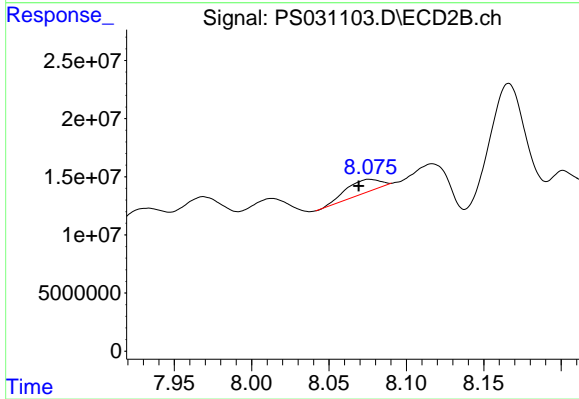
#5 DICAMBA

R.T.: 7.969 min
 Delta R.T.: -0.002 min
 Response: 14348571
 Conc: 2.22 ng/ml



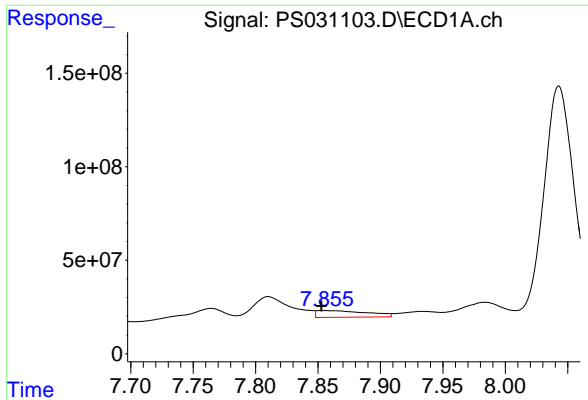
#6 MCPP

R.T.: 0.000 min
 Exp R.T. : 7.703 min
 Response: 0
 Conc: N.D.



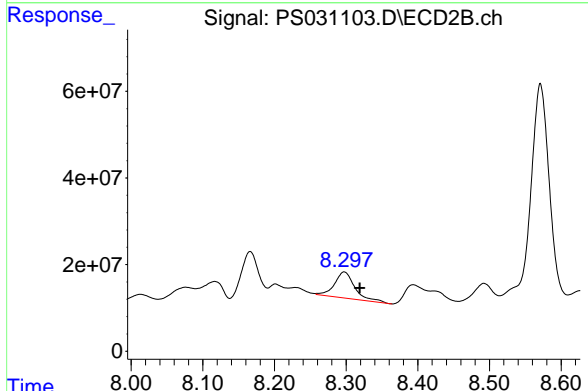
#6 MCPP

R.T.: 8.077 min
 Delta R.T.: 0.007 min
 Response: 17256213
 Conc: 8.07 ug/ml

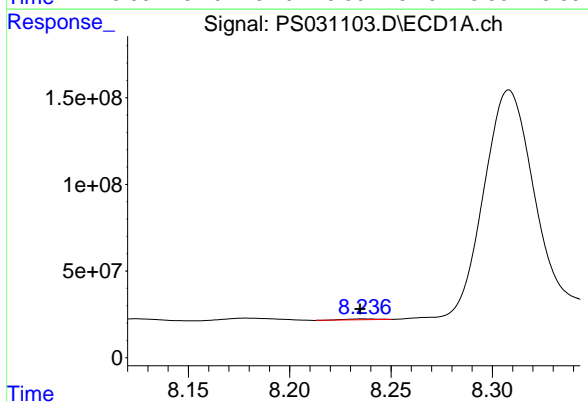


#7 MCPA
 R.T.: 7.855 min
 Delta R.T.: 0.002 min
 Response: 101923746
 Conc: 9.34 ug/ml

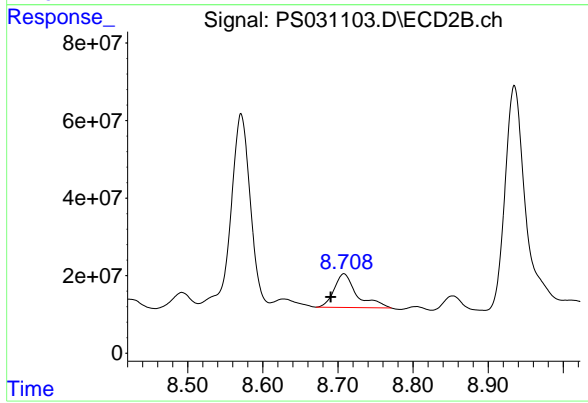
Instrument : ECD_S
 ClientSampleId : TP-16



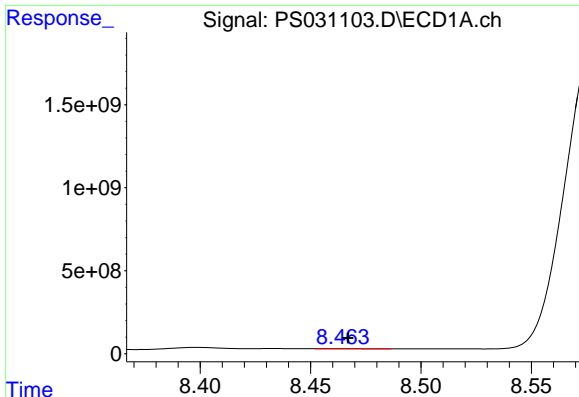
#7 MCPA
 R.T.: 8.297 min
 Delta R.T.: -0.021 min
 Response: 118762613
 Conc: 37.05 ug/ml



#8 DICHLORPROP
 R.T.: 8.236 min
 Delta R.T.: 0.002 min
 Response: 5562404
 Conc: 1.63 ng/ml



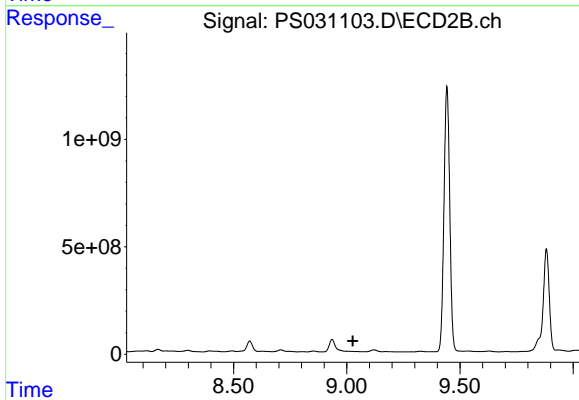
#8 DICHLORPROP
 R.T.: 8.708 min
 Delta R.T.: 0.017 min
 Response: 151811817
 Conc: 99.92 ng/ml



#9 2,4-D

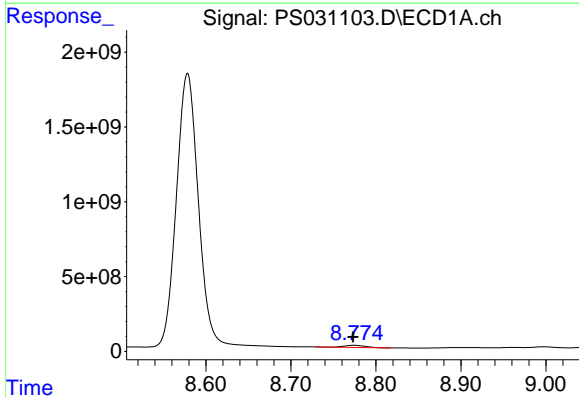
R.T.: 8.464 min
 Delta R.T.: -0.003 min
 Response: 11612704
 Conc: 3.77 ng/ml

Instrument :
 ECD_S
 ClientSampleId :
 TP-16



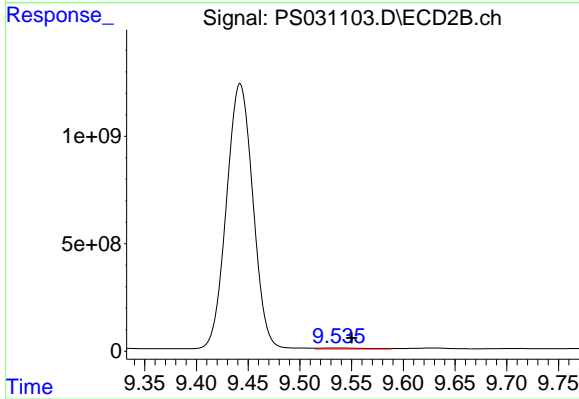
#9 2,4-D

R.T.: 0.000 min
 Exp R.T. : 9.027 min
 Response: 0
 Conc: N.D.



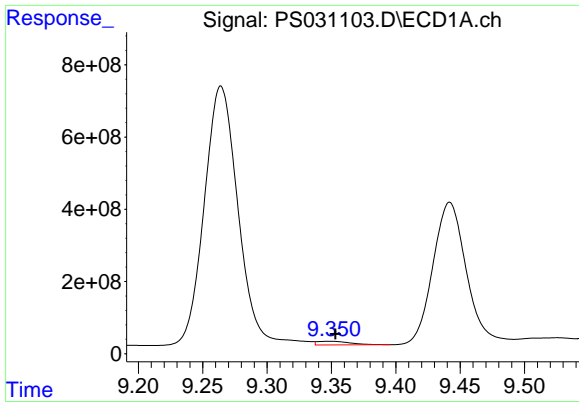
#10 Pentachlorophenol

R.T.: 8.774 min
 Delta R.T.: 0.000 min
 Response: 250893663
 Conc: 4.99 ng/ml



#10 Pentachlorophenol

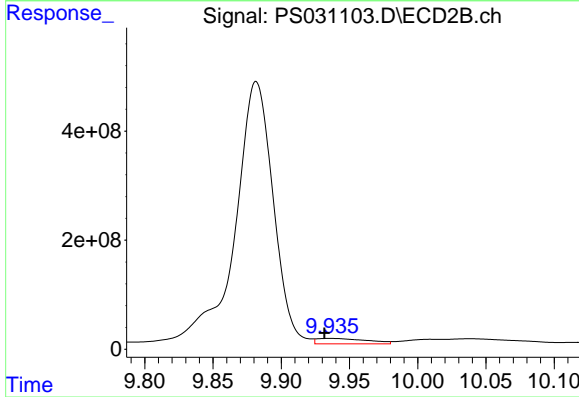
R.T.: 9.535 min
 Delta R.T.: -0.015 min
 Response: 146418729
 Conc: 3.80 ng/ml



#11 2,4,5-TP (SILVEX)

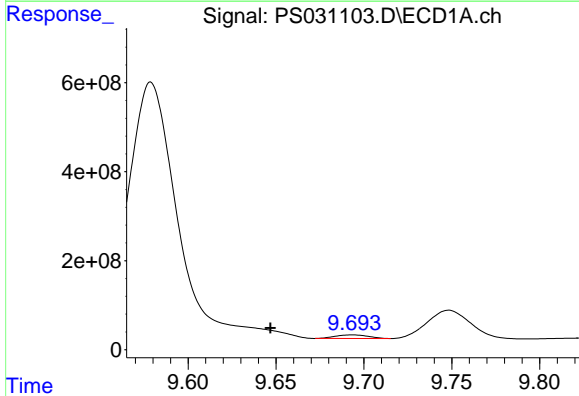
R.T.: 9.349 min
 Delta R.T.: -0.004 min
 Response: 175221800
 Conc: 9.42 ng/ml

Instrument :
 ECD_S
 ClientSampleId :
 TP-16



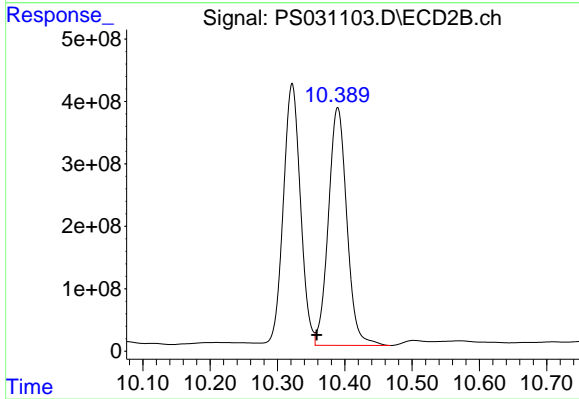
#11 2,4,5-TP (SILVEX)

R.T.: 9.936 min
 Delta R.T.: 0.004 min
 Response: 254771714
 Conc: 17.36 ng/ml



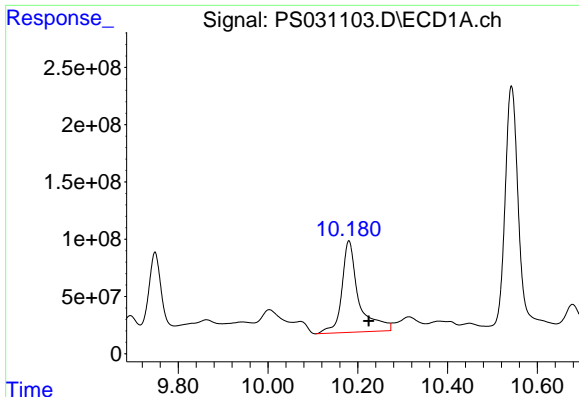
#12 2,4,5-T

R.T.: 9.693 min
 Delta R.T.: 0.047 min
 Response: 106142801
 Conc: 6.98 ng/ml



#12 2,4,5-T

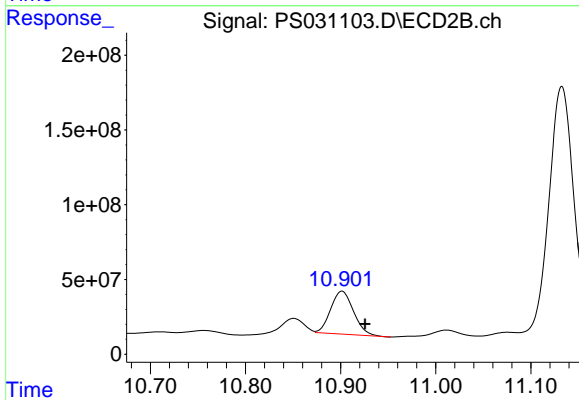
R.T.: 10.390 min
 Delta R.T.: 0.031 min
 Response: 7279939061
 Conc: 520.30 ng/ml



#13 2,4-DB

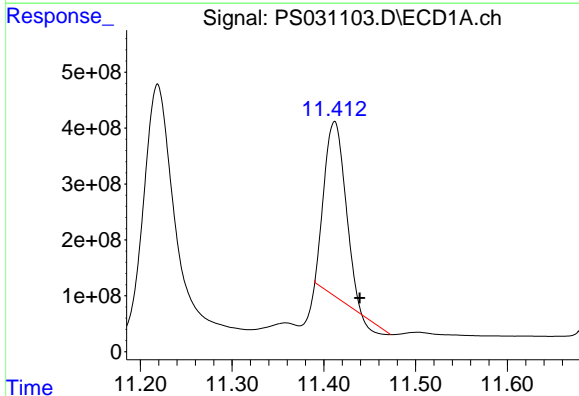
R.T.: 10.180 min
 Delta R.T.: -0.045 min
 Response: 2087319769
 Conc: 961.55 ng/ml

Instrument :
 ECD_S
 ClientSampleId :
 TP-16



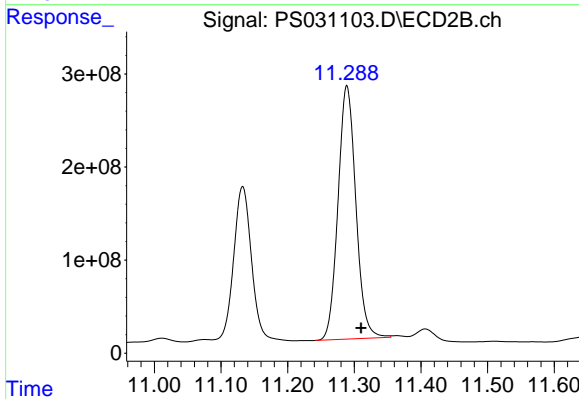
#13 2,4-DB

R.T.: 10.901 min
 Delta R.T.: -0.024 min
 Response: 480392070
 Conc: 406.02 ng/ml



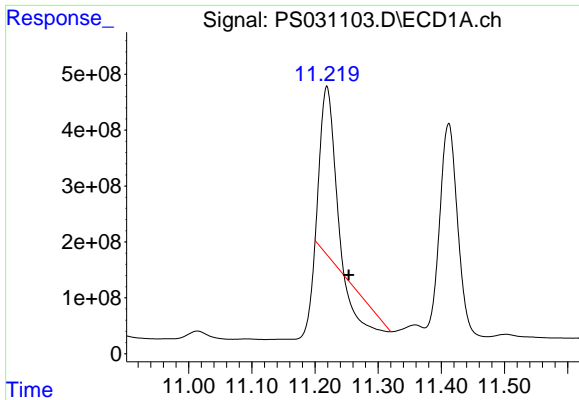
#14 DINOSEB

R.T.: 11.412 min
 Delta R.T.: -0.027 min
 Response: 4866834793
 Conc: 369.15 ng/ml



#14 DINOSEB

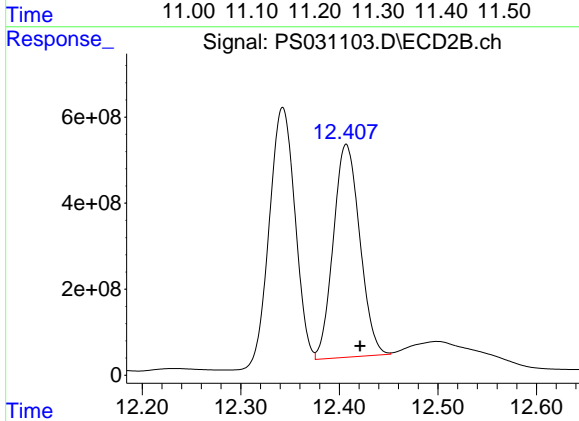
R.T.: 11.289 min
 Delta R.T.: -0.021 min
 Response: 5059024375
 Conc: 445.67 ng/ml



#15 Picloram

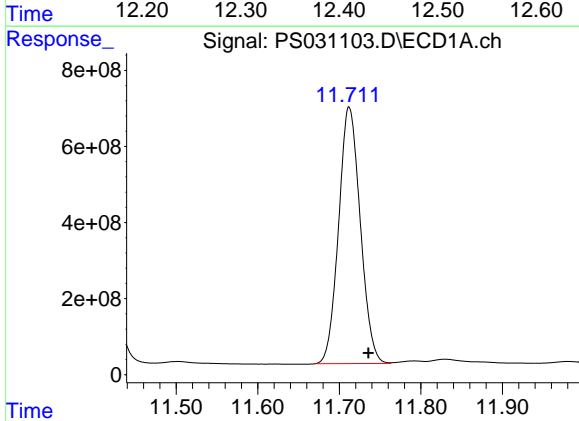
R.T.: 11.219 min
Delta R.T.: -0.035 min
Response: 3315731483
Conc: 227.54 ng/ml

Instrument :
ECD_S
ClientSampleId :
TP-16



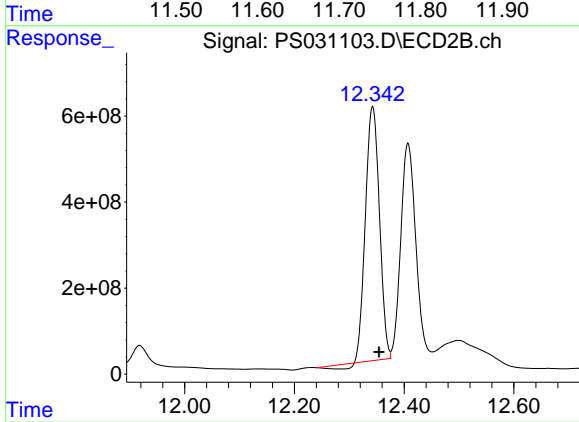
#15 Picloram

R.T.: 12.407 min
Delta R.T.: -0.014 min
Response: 9243944673
Conc: 393.68 ng/ml



#16 DCPA

R.T.: 11.712 min
Delta R.T.: -0.024 min
Response: 12439559844
Conc: 519.68 ng/ml



#16 DCPA

R.T.: 12.343 min
Delta R.T.: -0.012 min
Response: 10281333689
Conc: 455.89 ng/ml