

Data Path : Z:\pestpcbsrv\HPCHEM1\ECD_S\Data\PS071725\
 Data File : PS031106.D
 Signal(s) : Signal #1: ECD1A.ch Signal #2: ECD2B.ch
 Acq On : 17 Jul 2025 19:37
 Operator : AR\AJ
 Sample : Q2600-02
 Misc :
 ALS Vial : 6 Sample Multiplier: 1

Instrument :
 ECD_S
 ClientSampleId :
 TRENCH

Integration File signal 1: autoint1.e
 Integration File signal 2: autoint2.e
 Quant Time: Jul 17 22:59:35 2025
 Quant Method : Z:\pestpcbsrv\HPCHEM1\ECD_S\Method\PS071125.M
 Quant Title : 8080.M
 QLast Update : Mon Jul 14 05:51:06 2025
 Response via : Initial Calibration
 Integrator: ChemStation

Volume Inj. : 1 µl
 Signal #1 Phase : ZB-MR2 Signal #2 Phase: ZB-MR2
 Signal #1 Info : 30M x 0.32mm x0.5 Signal #2 Info : 30M x 0.32mm x 0.25µm

Compound	RT#1	RT#2	Resp#1	Resp#2	ng/ml	ng/ml

System Monitoring Compounds						
4) S 2,4-DCAA	7.327	7.766	2418.5E6	507.5E6	611.490	489.822
Target Compounds						
1) T Dalapon	2.661f	2.697	1621.0E6	2075.0E6	266.107	729.906 #
2) T 3,5-DICHL...	6.506	6.685f	61230388	44709709	11.688	28.839 #
3) T 4-Nitroph...	7.110	7.317	-59387	228664	N.D.	<MDL
6) T MCPP	0.000	8.075	0	2306422	N.D.	1.079
7) T MCPA	7.847	8.307	29767450	95549448	2.729	29.806 #
8) T DICHLORPROP	8.268f	8.668	101.9E6	9924405	29.922	6.532 #
9) T 2,4-D	8.450	0.000	11360369	0	3.690	N.D. #
10) T Pentachlo...	8.768	9.549	96416002	105.0E6	1.918	2.726 #
11) T 2,4,5-TP ...	9.354	9.912	481.9E6	490.9E6	25.895	33.452 #
12) T 2,4,5-T	9.615f	10.352	19170354	84669922	1.260	6.051 #
13) T 2,4-DB	10.253f	10.961f	98633178	13102269	45.437	11.074 #
14) T DINOSEB	11.446	11.321	-158227972	1362.7E6	N.D.	120.043
15) T Picloram	11.225f	12.432	128.0E6	119.2E6	8.785	5.076 #
16) T DCPA	11.695f	12.353	32055087	39971634	1.339	1.772 #

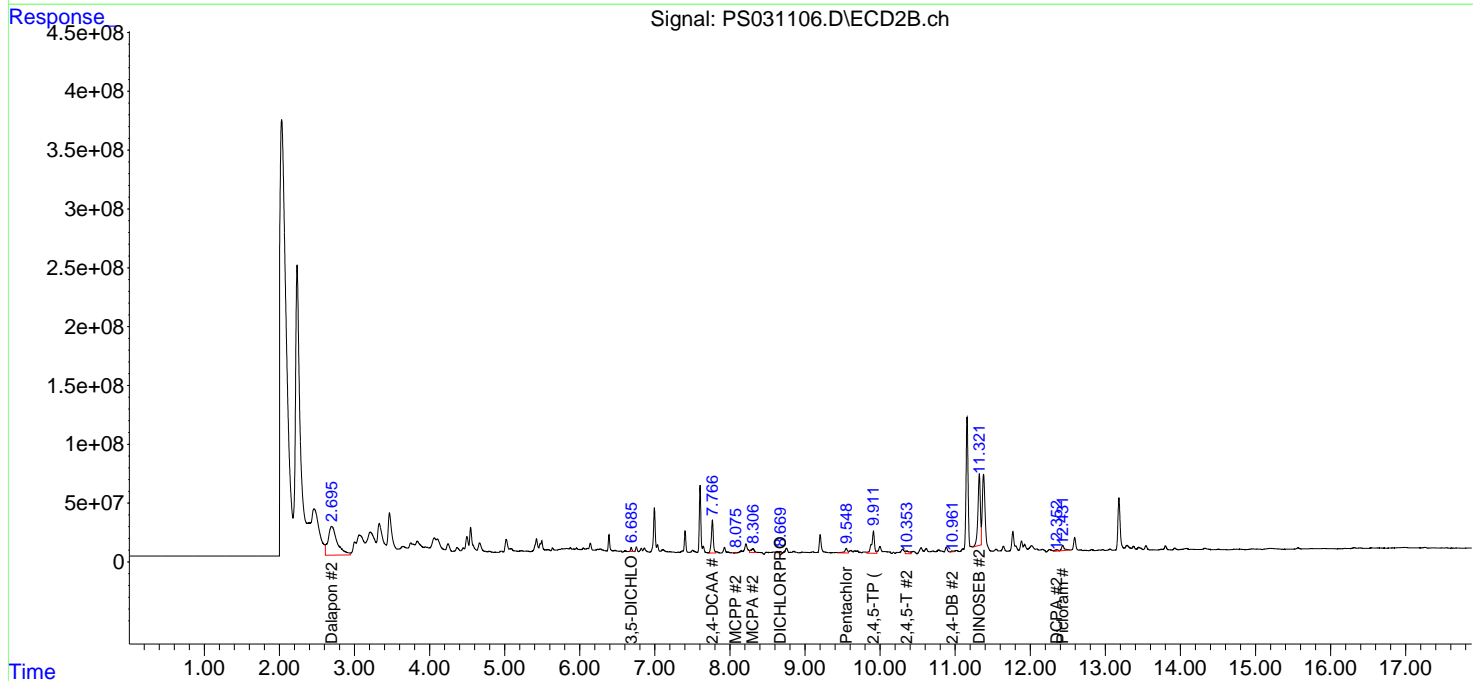
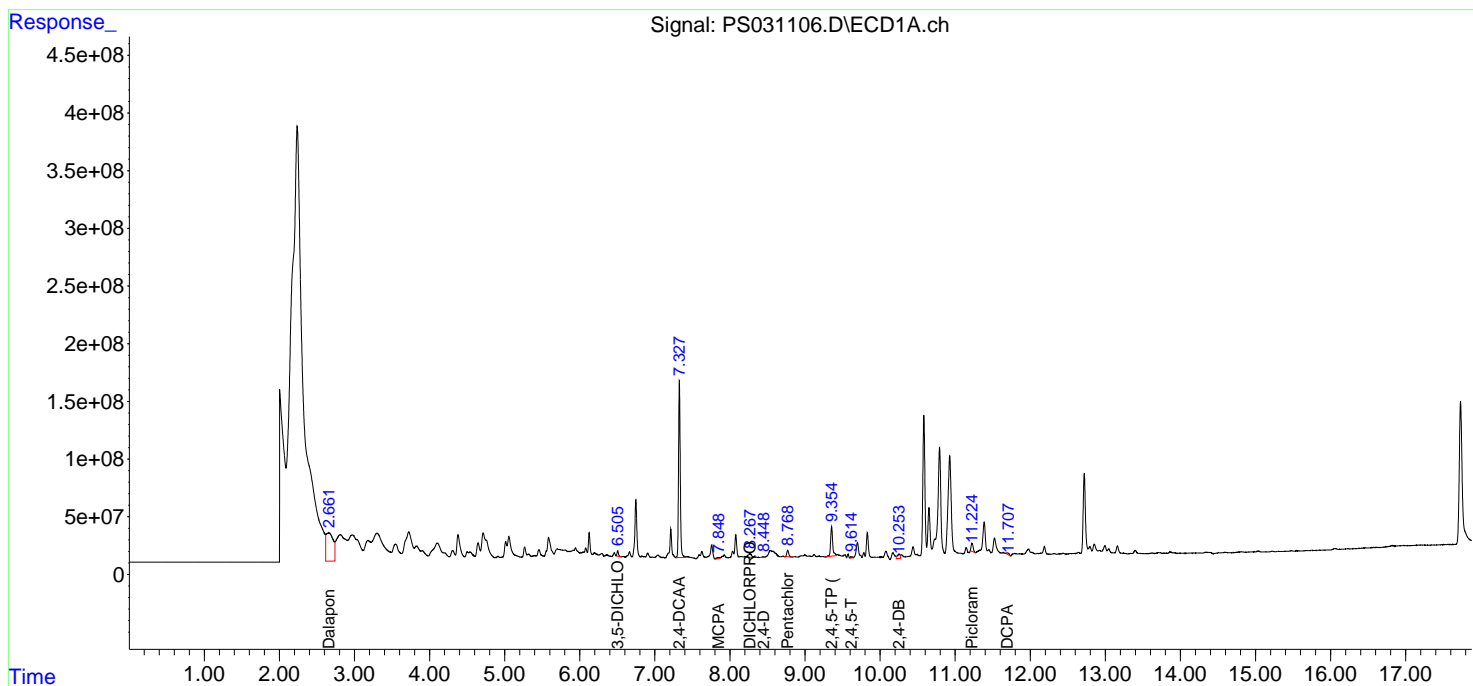
(f)=RT Delta > 1/2 Window (#)=Amounts differ by > 25% (m)=manual int.

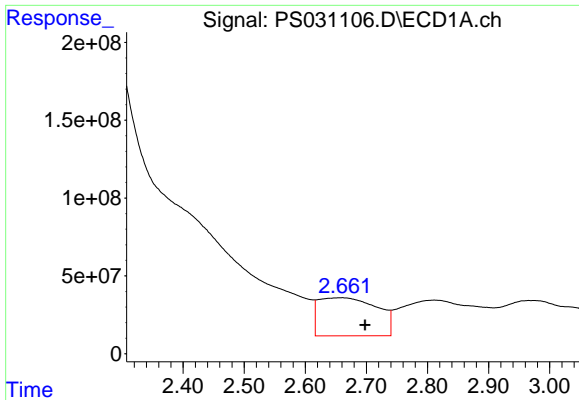
Data Path : Z:\pestpcbsrv\HPCHEM1\ECD_S\Data\PS071725\
 Data File : PS031106.D
 Signal(s) : Signal #1: ECD1A.ch Signal #2: ECD2B.ch
 Acq On : 17 Jul 2025 19:37
 Operator : AR\AJ
 Sample : Q2600-02
 Misc :
 ALS Vial : 6 Sample Multiplier: 1

Instrument :
 ECD_S
 ClientSampleId :
 TRENCH

Integration File signal 1: autoint1.e
 Integration File signal 2: autoint2.e
 Quant Time: Jul 17 22:59:35 2025
 Quant Method : Z:\pestpcbsrv\HPCHEM1\ECD_S\Method\PS071125.M
 Quant Title : 8080.M
 QLast Update : Mon Jul 14 05:51:06 2025
 Response via : Initial Calibration
 Integrator: ChemStation

Volume Inj. : 1 µl
 Signal #1 Phase : ZB-MR1 Signal #2 Phase: ZB-MR2
 Signal #1 Info : 30M x 0.32mm x0.5 Signal #2 Info : 30M x 0.32mm x 0.25µm

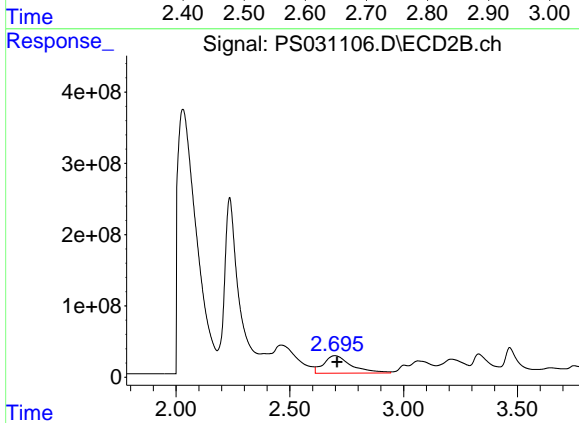




#1 Dalapon

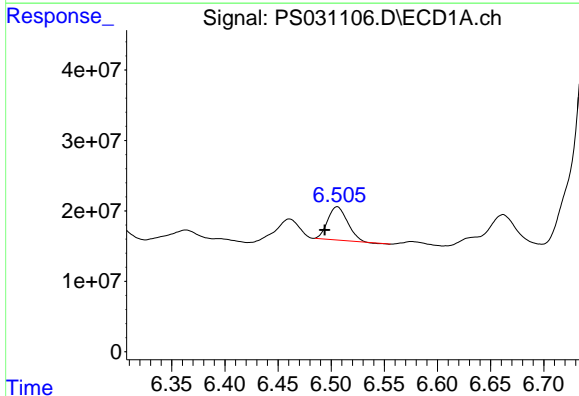
R.T.: 2.661 min
 Delta R.T.: -0.037 min
 Response: 1621048892
 Conc: 266.11 ng/ml

Instrument :
 ECD_S
 ClientSampleId :
 TRENCH



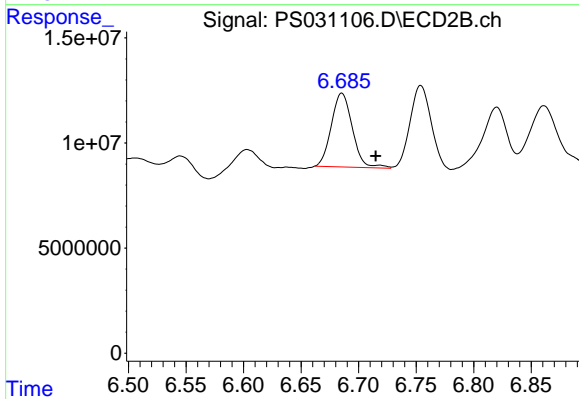
#1 Dalapon

R.T.: 2.697 min
 Delta R.T.: -0.011 min
 Response: 2075020793
 Conc: 729.91 ng/ml



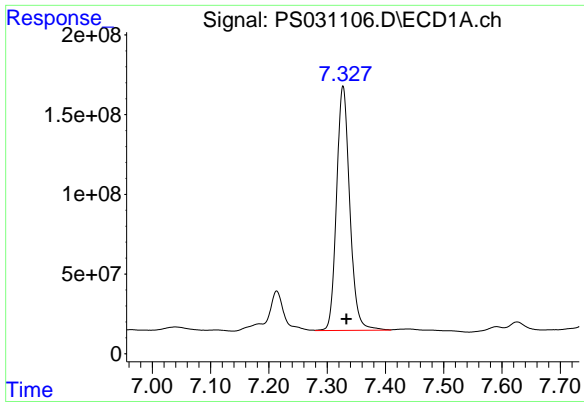
#2 3,5-DICHLOROBENZOIC ACID

R.T.: 6.506 min
 Delta R.T.: 0.012 min
 Response: 61230388
 Conc: 11.69 ng/ml



#2 3,5-DICHLOROBENZOIC ACID

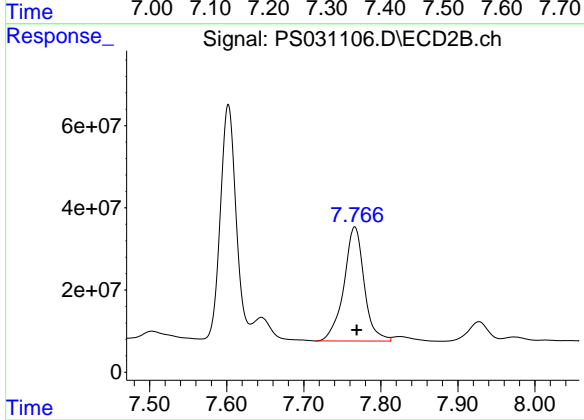
R.T.: 6.685 min
 Delta R.T.: -0.029 min
 Response: 44709709
 Conc: 28.84 ng/ml



#4 2,4-DCAA

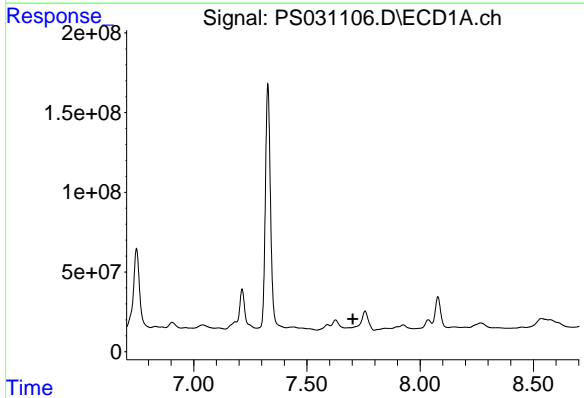
R.T.: 7.327 min
 Delta R.T.: -0.006 min
 Response: 2418487678
 Conc: 611.49 ng/ml

Instrument :
 ECD_S
 ClientSampleId :
 TRENCH



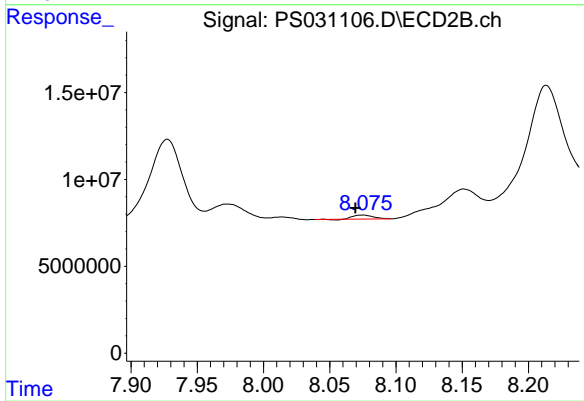
#4 2,4-DCAA

R.T.: 7.766 min
 Delta R.T.: -0.003 min
 Response: 507471415
 Conc: 489.82 ng/ml



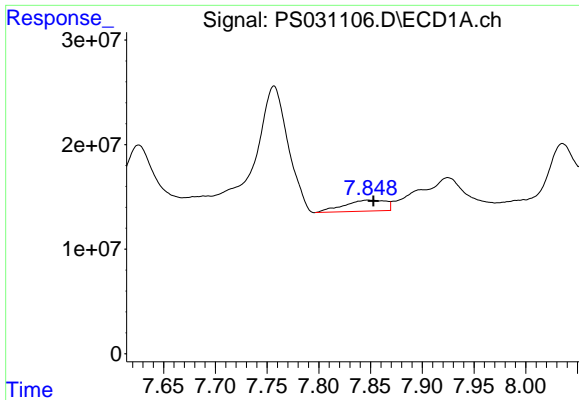
#6 MCP

R.T.: 0.000 min
 Exp R.T. : 7.703 min
 Response: 0
 Conc: N.D.



#6 MCP

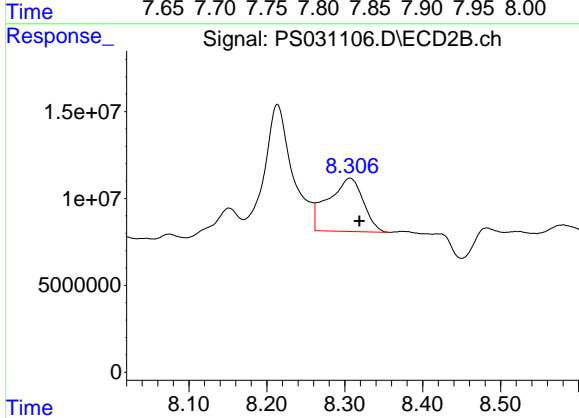
R.T.: 8.075 min
 Delta R.T.: 0.006 min
 Response: 2306422
 Conc: 1.08 ug/ml



#7 MCPA

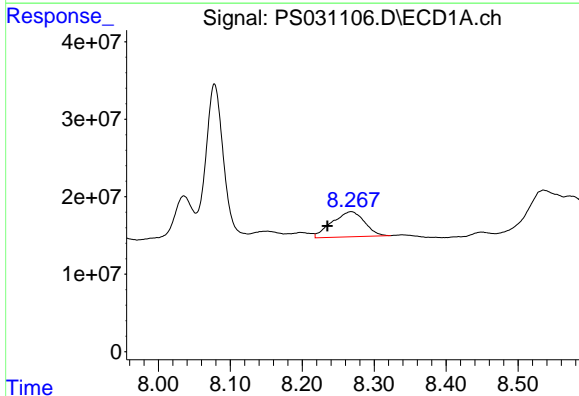
R.T.: 7.847 min
 Delta R.T.: -0.005 min
 Response: 29767450
 Conc: 2.73 ug/ml

Instrument :
 ECD_S
 ClientSampleId :
 TRENCH



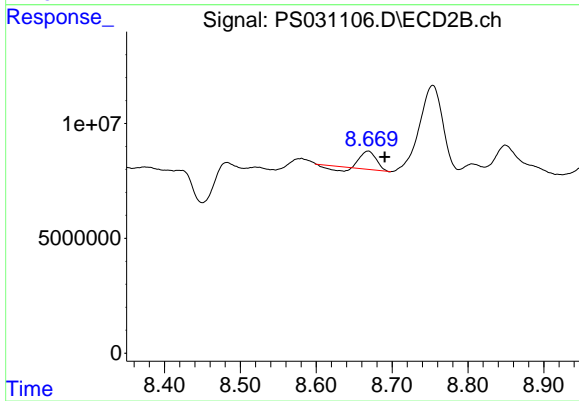
#7 MCPA

R.T.: 8.307 min
 Delta R.T.: -0.012 min
 Response: 95549448
 Conc: 29.81 ug/ml



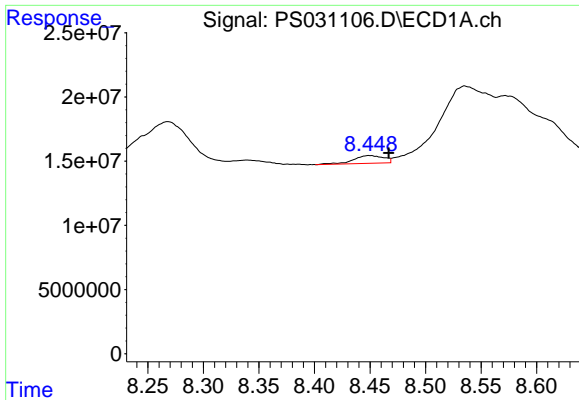
#8 DICHLORPROP

R.T.: 8.268 min
 Delta R.T.: 0.033 min
 Response: 101890540
 Conc: 29.92 ng/ml



#8 DICHLORPROP

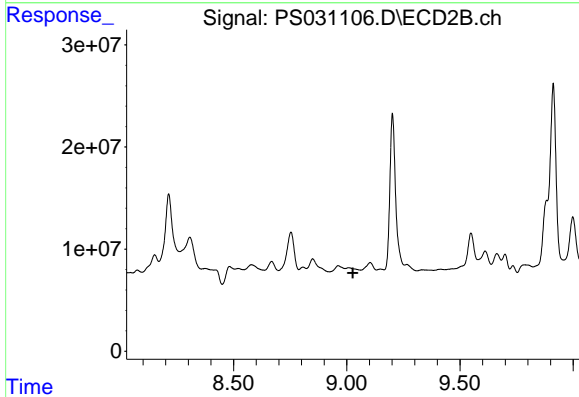
R.T.: 8.668 min
 Delta R.T.: -0.022 min
 Response: 9924405
 Conc: 6.53 ng/ml



#9 2,4-D

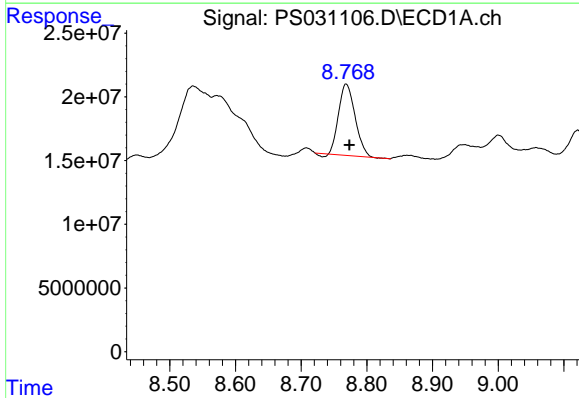
R.T.: 8.450 min
 Delta R.T.: -0.017 min
 Response: 11360369
 Conc: 3.69 ng/ml

Instrument :
 ECD_S
 ClientSampleId :
 TRENCH



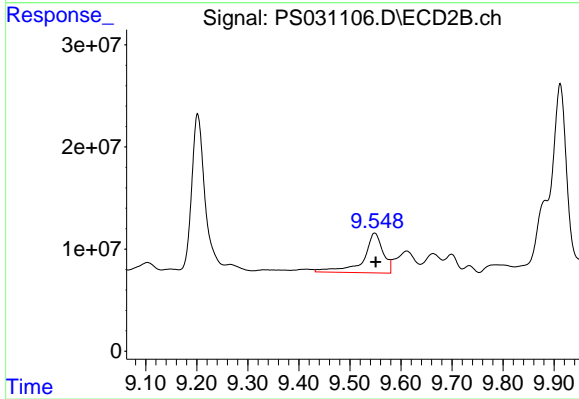
#9 2,4-D

R.T.: 0.000 min
 Exp R.T. : 9.027 min
 Response: 0
 Conc: N.D.



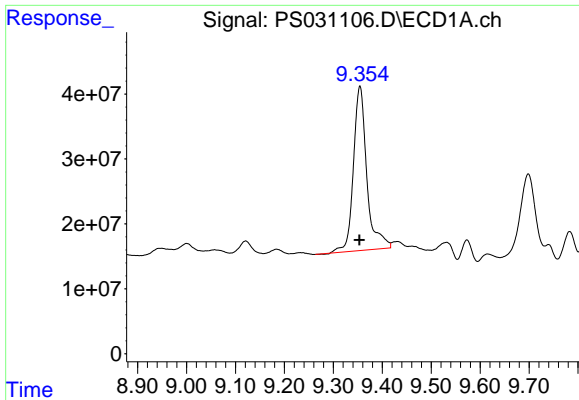
#10 Pentachlorophenol

R.T.: 8.768 min
 Delta R.T.: -0.005 min
 Response: 96416002
 Conc: 1.92 ng/ml



#10 Pentachlorophenol

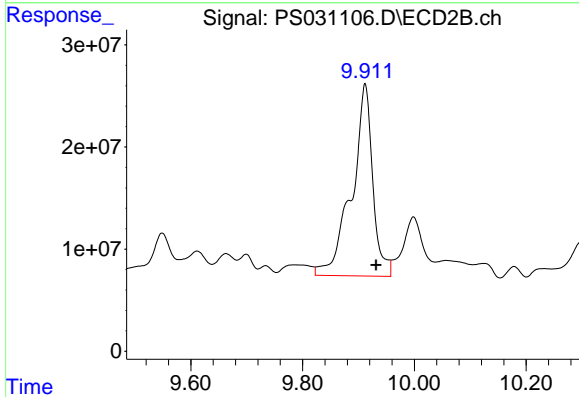
R.T.: 9.549 min
 Delta R.T.: -0.002 min
 Response: 105040750
 Conc: 2.73 ng/ml



#11 2,4,5-TP (SILVEX)

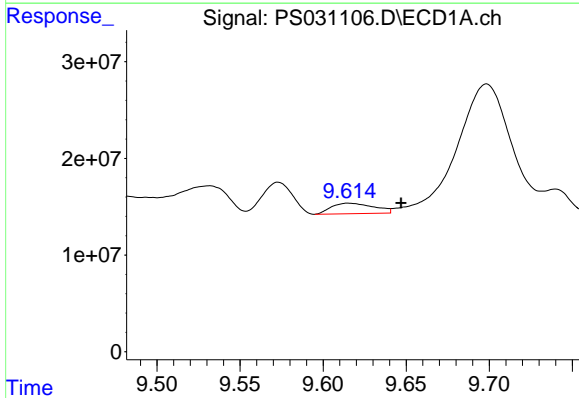
R.T.: 9.354 min
 Delta R.T.: 0.001 min
 Response: 481920759
 Conc: 25.89 ng/ml

Instrument :
 ECD_S
 ClientSampleId :
 TRENCH



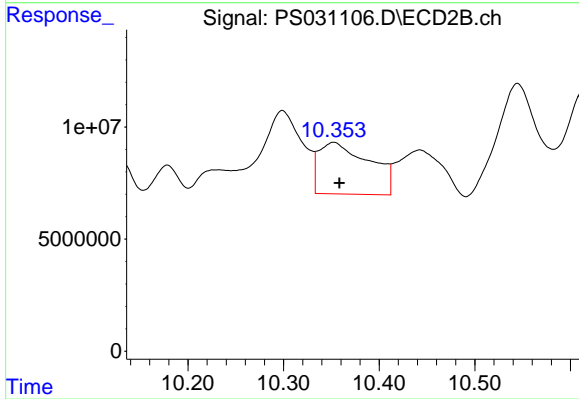
#11 2,4,5-TP (SILVEX)

R.T.: 9.912 min
 Delta R.T.: -0.020 min
 Response: 490932020
 Conc: 33.45 ng/ml



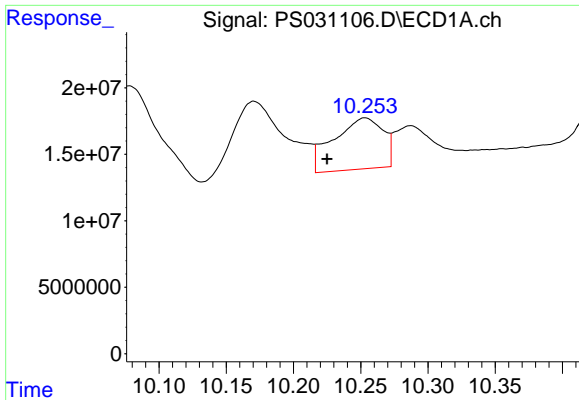
#12 2,4,5-T

R.T.: 9.615 min
 Delta R.T.: -0.032 min
 Response: 19170354
 Conc: 1.26 ng/ml



#12 2,4,5-T

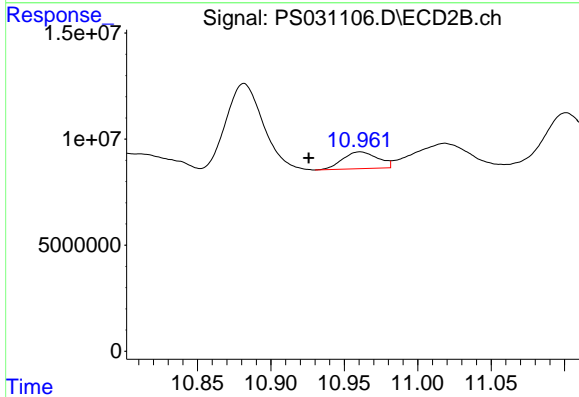
R.T.: 10.352 min
 Delta R.T.: -0.006 min
 Response: 84669922
 Conc: 6.05 ng/ml



#13 2,4-DB

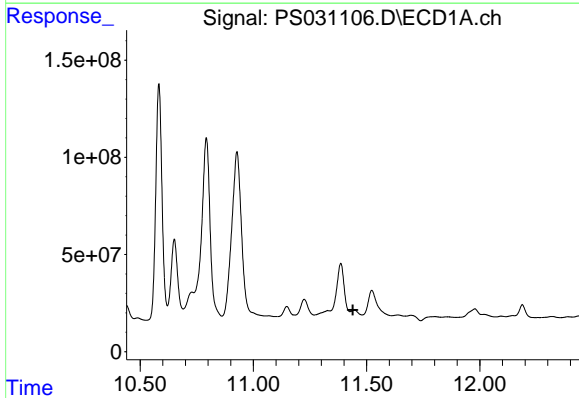
R.T.: 10.253 min
 Delta R.T.: 0.028 min
 Response: 98633178
 Conc: 45.44 ng/ml

Instrument :
 ECD_S
 ClientSampleId :
 TRENCH



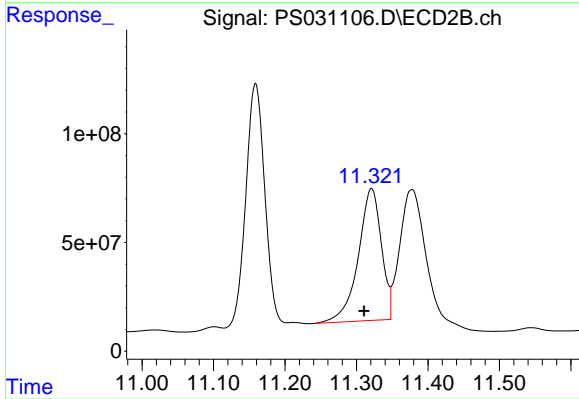
#13 2,4-DB

R.T.: 10.961 min
 Delta R.T.: 0.035 min
 Response: 13102269
 Conc: 11.07 ng/ml



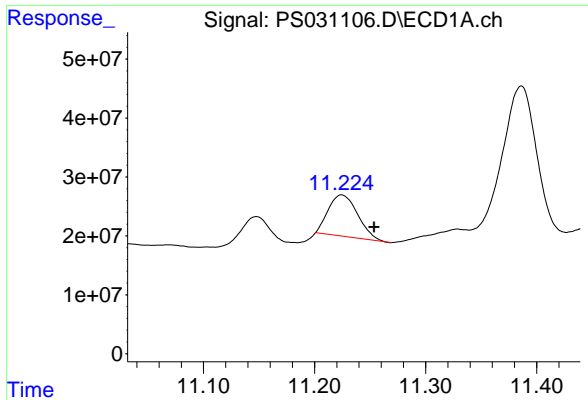
#14 DINOSEB

R.T.: 11.446 min
 Delta R.T.: 0.007 min
 Response: -158227972
 Conc: N.D.



#14 DINOSEB

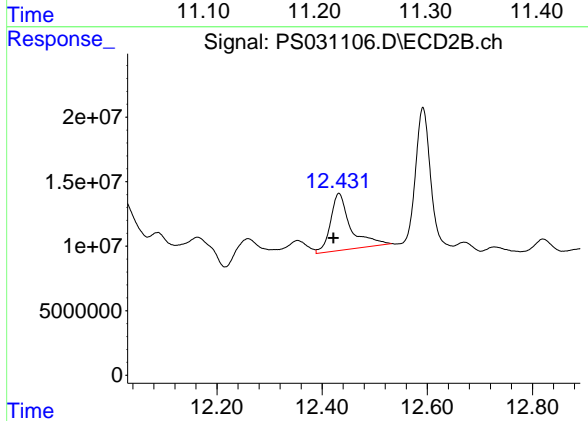
R.T.: 11.321 min
 Delta R.T.: 0.011 min
 Response: 1362671667
 Conc: 120.04 ng/ml



#15 Picloram

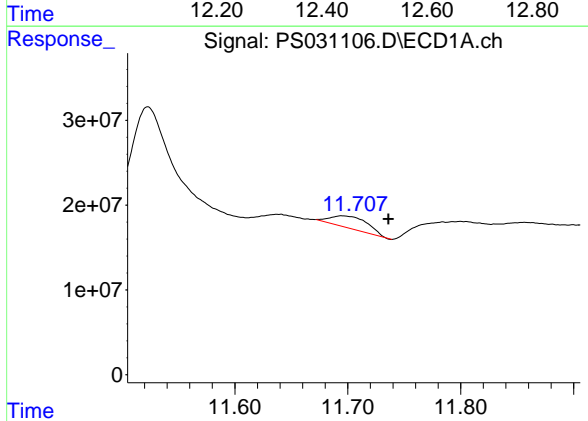
R.T.: 11.225 min
 Delta R.T.: -0.029 min
 Response: 128016729
 Conc: 8.79 ng/ml

Instrument :
 ECD_S
 ClientSampleId :
 TRENCH



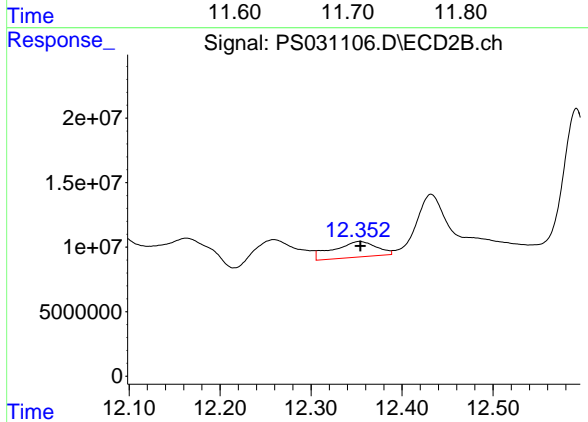
#15 Picloram

R.T.: 12.432 min
 Delta R.T.: 0.011 min
 Response: 119196179
 Conc: 5.08 ng/ml



#16 DCPA

R.T.: 11.695 min
 Delta R.T.: -0.041 min
 Response: 32055087
 Conc: 1.34 ng/ml



#16 DCPA

R.T.: 12.353 min
 Delta R.T.: 0.000 min
 Response: 39971634
 Conc: 1.77 ng/ml