

Data Path : Z:\pestpcbsrv\HPCHEM1\ECD_S\Data\PS071725\
 Data File : PS031108.D
 Signal(s) : Signal #1: ECD1A.ch Signal #2: ECD2B.ch
 Acq On : 17 Jul 2025 20:25
 Operator : AR\AJ
 Sample : Q2600-10
 Misc :
 ALS Vial : 8 Sample Multiplier: 1

Instrument :
 ECD_S
 ClientSampleId :
 END-OF-TRENCH

Integration File signal 1: autoint1.e
 Integration File signal 2: autoint2.e
 Quant Time: Jul 17 23:04:23 2025
 Quant Method : Z:\pestpcbsrv\HPCHEM1\ECD_S\Method\PS071125.M
 Quant Title : 8080.M
 QLast Update : Mon Jul 14 05:51:06 2025
 Response via : Initial Calibration
 Integrator: ChemStation

Volume Inj. : 1 µl
 Signal #1 Phase : ZB-MR2 Signal #2 Phase: ZB-MR2
 Signal #1 Info : 30M x 0.32mm x0.5 Signal #2 Info : 30M x 0.32mm x 0.25µm

Compound	RT#1	RT#2	Resp#1	Resp#2	ng/ml	ng/ml

System Monitoring Compounds						
4) S 2,4-DCAA	7.327	7.767	2624.5E6	523.9E6	663.571	505.681
Target Compounds						
1) T Dalapon	2.650f	2.703	1497.6E6	1919.7E6	245.849	675.276 #
2) T 3,5-DICHL...	6.505	6.686f	75085442	58525896	14.333	37.750 #
3) T 4-Nitroph...	7.115	7.316	2514367	-574676	1.862	N.D. #
6) T MCPP	0.000	8.077	0	4573864	N.D.	2.139
7) T MCPA	7.856	8.307	24738864	99081821	2.268	30.908 #
8) T DICHLORPROP	8.270f	8.669	101.8E6	5260610	29.898	3.463 #
9) T 2,4-D	8.448	9.020	8961353	-225581	2.911	N.D. #
10) T Pentachlo...	8.775	9.552	25252357	15482384	<MDL	<MDL #
11) T 2,4,5-TP ...	9.352	9.912	443.7E6	439.9E6	23.843	29.973 #
12) T 2,4,5-T	9.614f	10.355	17527225	70588193	1.152	5.045 #
13) T 2,4-DB	10.251f	10.962f	94767443	12320815	43.656	10.413 #
14) T DINOSEB	11.443	11.321	-116926916	1127.1E6	N.D.	99.288
15) T Picloram	11.223f	0.000	112.5E6	0	7.720	N.D. #
16) T DCPA	11.689f	0.000	22735655	0	<MDL	N.D. #

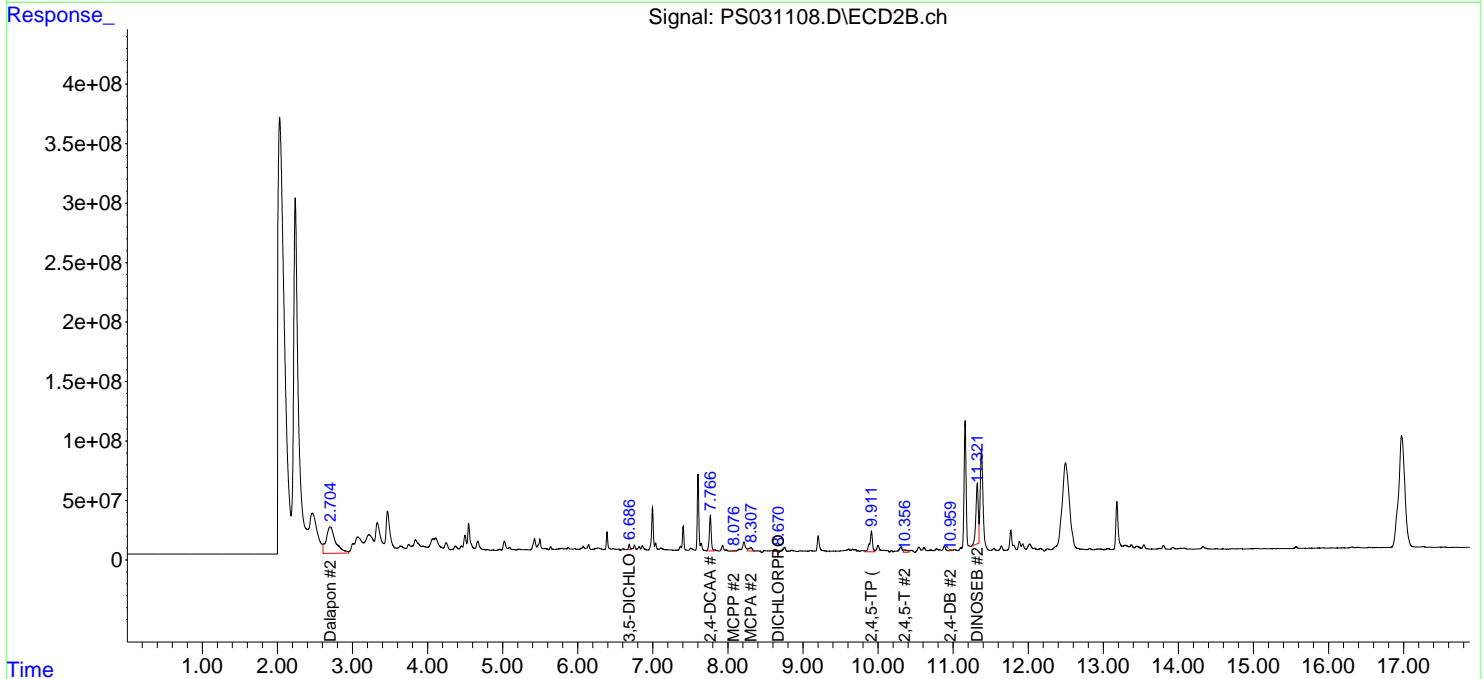
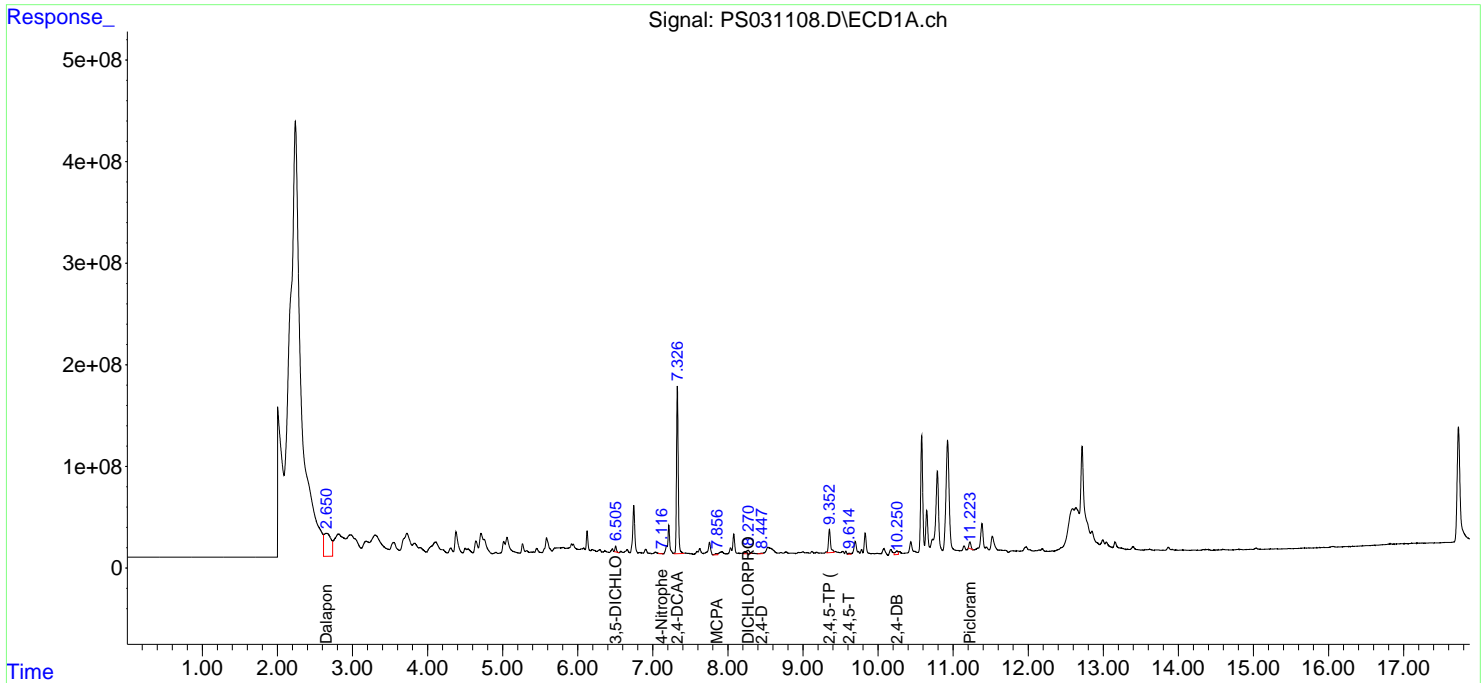
(f)=RT Delta > 1/2 Window (#)=Amounts differ by > 25% (m)=manual int.

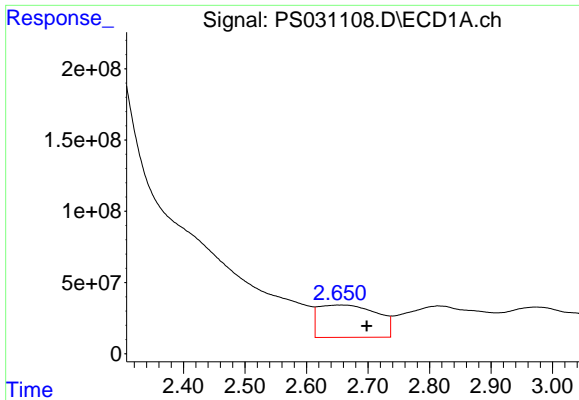
Data Path : Z:\pestpcbsrv\HPCHEM1\ECD_S\Data\PS071725\
 Data File : PS031108.D
 Signal(s) : Signal #1: ECD1A.ch Signal #2: ECD2B.ch
 Acq On : 17 Jul 2025 20:25
 Operator : AR\AJ
 Sample : Q2600-10
 Misc :
 ALS Vial : 8 Sample Multiplier: 1

Instrument :
 ECD_S
 ClientSampleId :
 END-OF-TRENCH

Integration File signal 1: autoint1.e
 Integration File signal 2: autoint2.e
 Quant Time: Jul 17 23:04:23 2025
 Quant Method : Z:\pestpcbsrv\HPCHEM1\ECD_S\Method\PS071125.M
 Quant Title : 8080.M
 QLast Update : Mon Jul 14 05:51:06 2025
 Response via : Initial Calibration
 Integrator: ChemStation

Volume Inj. : 1 µl
 Signal #1 Phase : ZB-MR1 Signal #2 Phase: ZB-MR2
 Signal #1 Info : 30M x 0.32mm x0.5 Signal #2 Info : 30M x 0.32mm x 0.25µm

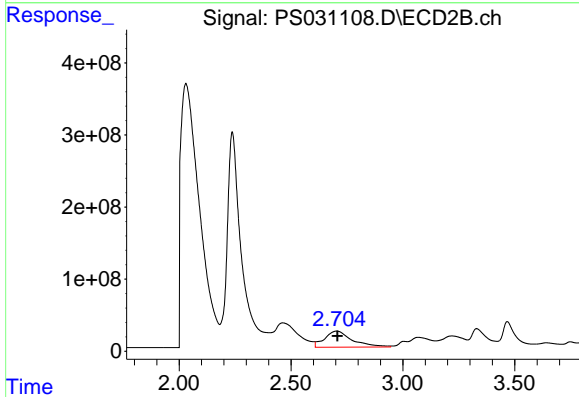




#1 Dalapon

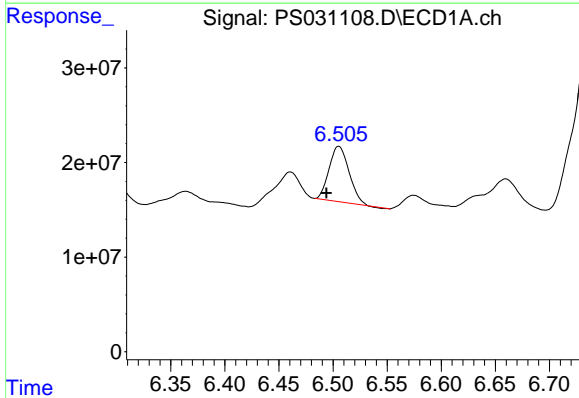
R.T.: 2.650 min
 Delta R.T.: -0.048 min
 Response: 1497646429
 Conc: 245.85 ng/ml

Instrument :
 ECD_S
 ClientSampleId :
 END-OF-TRENCH



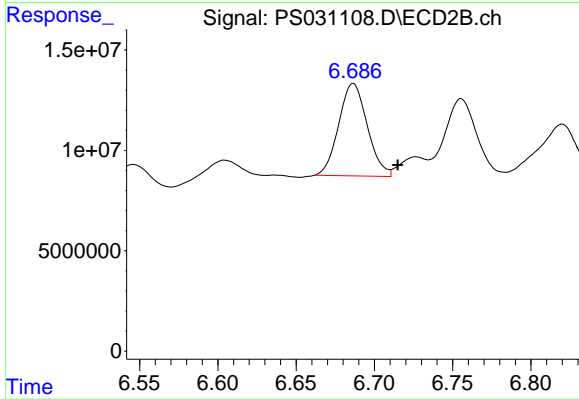
#1 Dalapon

R.T.: 2.703 min
 Delta R.T.: -0.005 min
 Response: 1919713087
 Conc: 675.28 ng/ml



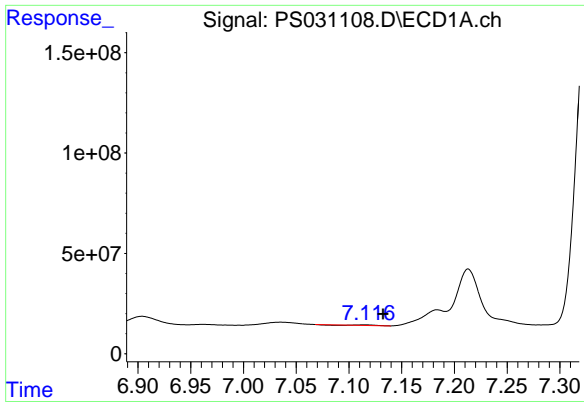
#2 3,5-DICHLOROBENZOIC ACID

R.T.: 6.505 min
 Delta R.T.: 0.011 min
 Response: 75085442
 Conc: 14.33 ng/ml



#2 3,5-DICHLOROBENZOIC ACID

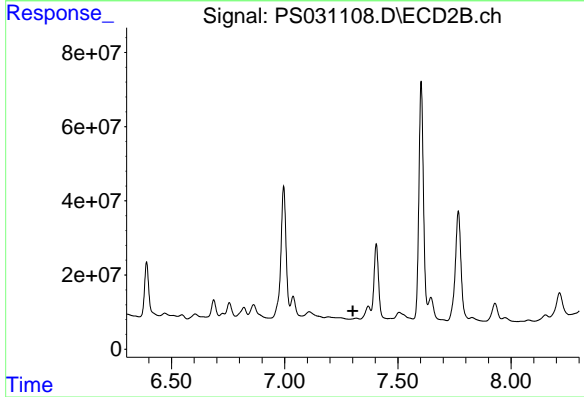
R.T.: 6.686 min
 Delta R.T.: -0.028 min
 Response: 58525896
 Conc: 37.75 ng/ml



#3 4-Nitrophenol

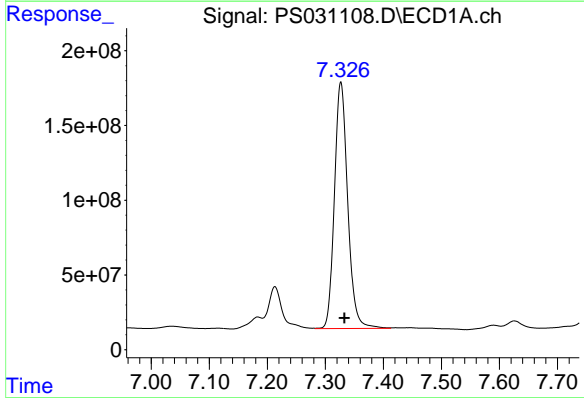
R.T.: 7.115 min
 Delta R.T.: -0.017 min
 Response: 2514367
 Conc: 1.86 ng/ml

Instrument :
 ECD_S
 ClientSampleId :
 END-OF-TRENCH



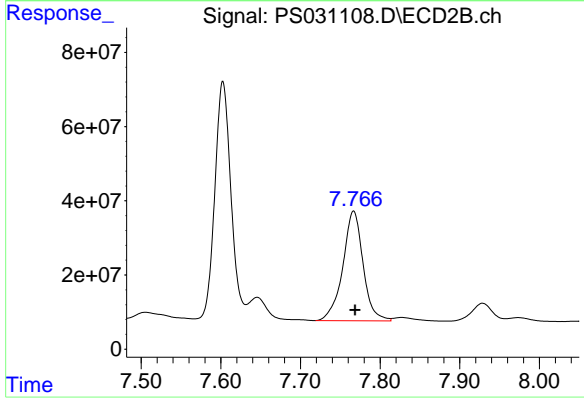
#3 4-Nitrophenol

R.T.: 7.316 min
 Delta R.T.: 0.015 min
 Response: -574676
 Conc: N.D.



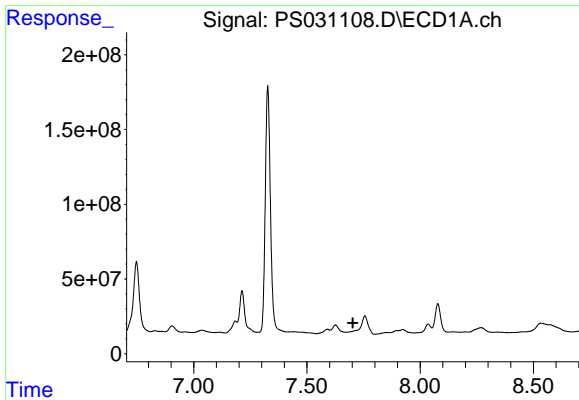
#4 2,4-DCAA

R.T.: 7.327 min
 Delta R.T.: -0.006 min
 Response: 2624472486
 Conc: 663.57 ng/ml



#4 2,4-DCAA

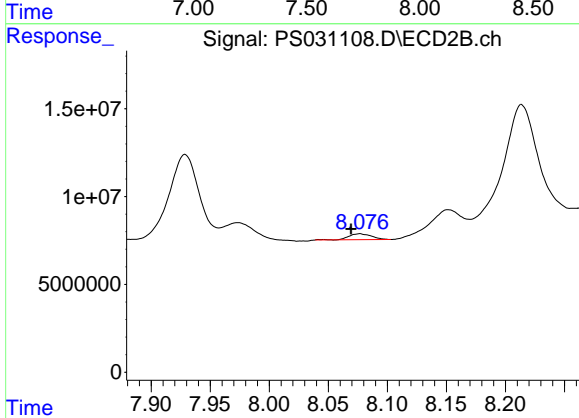
R.T.: 7.767 min
 Delta R.T.: -0.002 min
 Response: 523902318
 Conc: 505.68 ng/ml



#6 MCPP

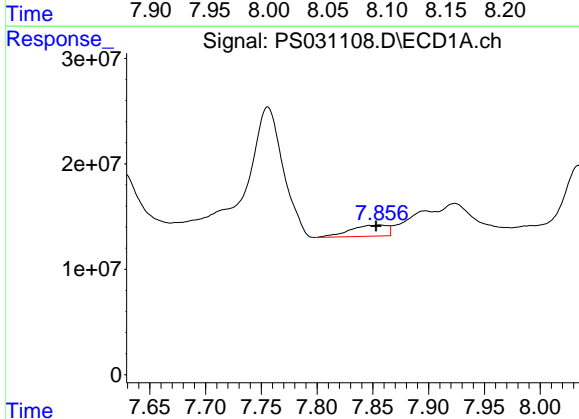
R.T.: 0.000 min
 Exp R.T.: 7.703 min
 Response: 0
 Conc: N.D.

Instrument :
 ECD_S
 ClientSampleId :
 END-OF-TRENCH



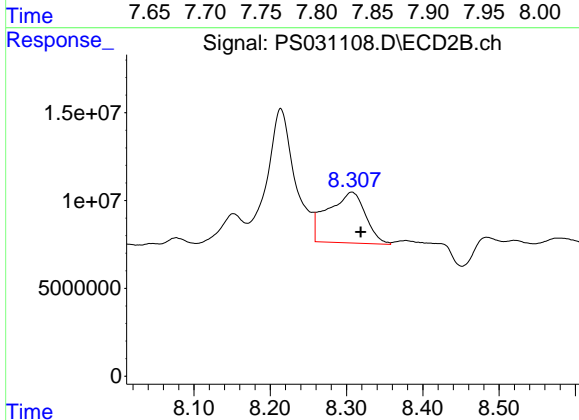
#6 MCPP

R.T.: 8.077 min
 Delta R.T.: 0.007 min
 Response: 4573864
 Conc: 2.14 ug/ml



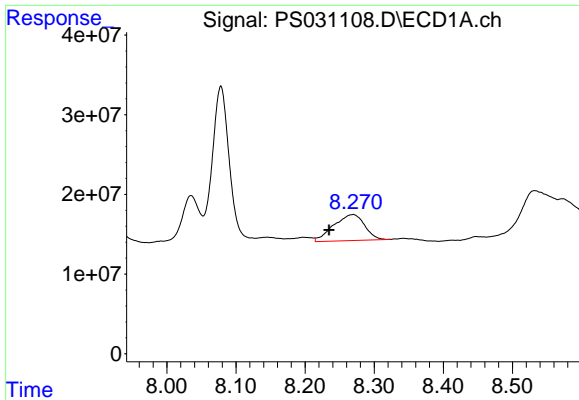
#7 MCPA

R.T.: 7.856 min
 Delta R.T.: 0.003 min
 Response: 24738864
 Conc: 2.27 ug/ml



#7 MCPA

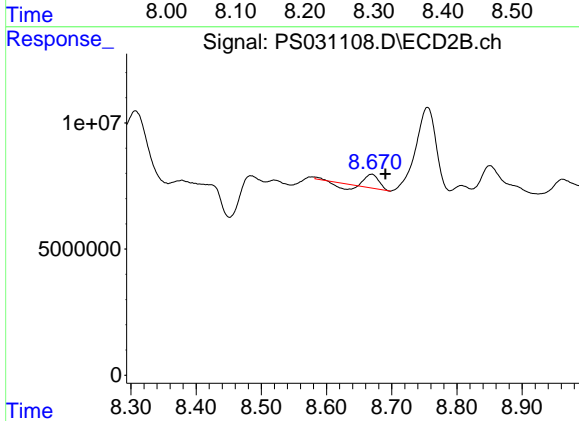
R.T.: 8.307 min
 Delta R.T.: -0.012 min
 Response: 99081821
 Conc: 30.91 ug/ml



#8 DICHLORPROP

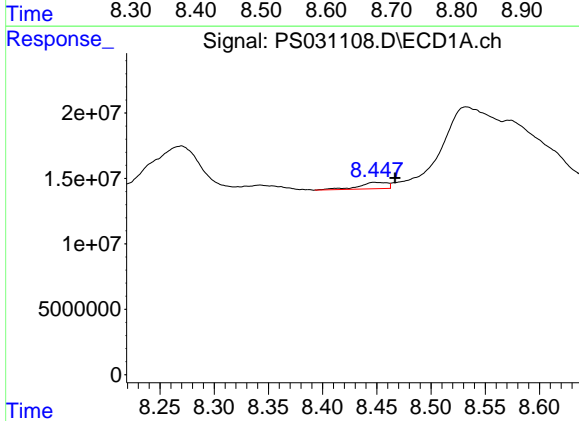
R.T.: 8.270 min
 Delta R.T.: 0.035 min
 Response: 101807606
 Conc: 29.90 ng/ml

Instrument :
 ECD_S
 ClientSampleId :
 END-OF-TRENCH



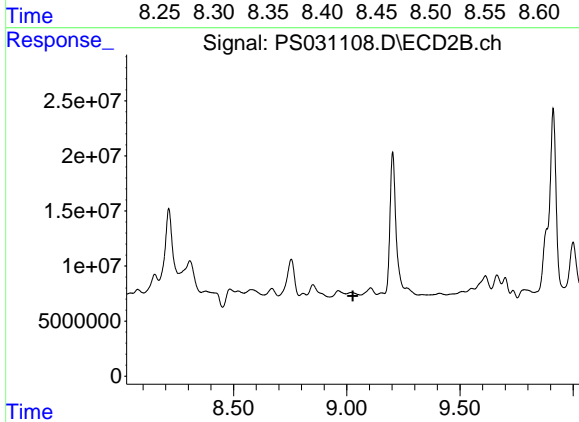
#8 DICHLORPROP

R.T.: 8.669 min
 Delta R.T.: -0.022 min
 Response: 5260610
 Conc: 3.46 ng/ml



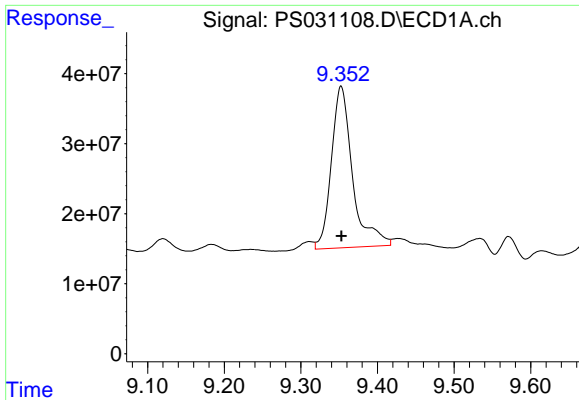
#9 2,4-D

R.T.: 8.448 min
 Delta R.T.: -0.019 min
 Response: 8961353
 Conc: 2.91 ng/ml



#9 2,4-D

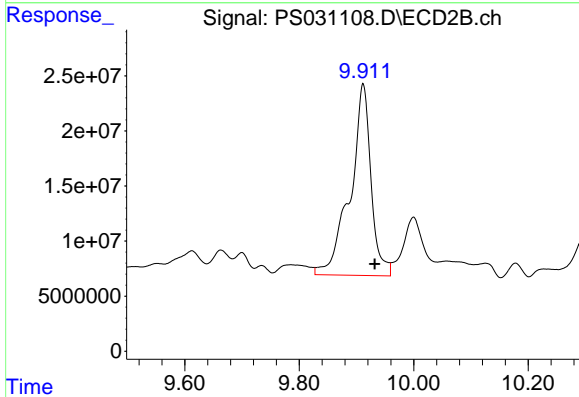
R.T.: 9.020 min
 Delta R.T.: -0.007 min
 Response: -225581
 Conc: N.D.



#11 2,4,5-TP (SILVEX)

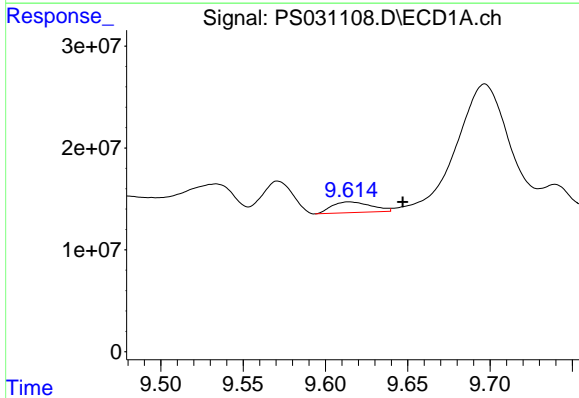
R.T.: 9.352 min
 Delta R.T.: 0.000 min
 Response: 443732763
 Conc: 23.84 ng/ml

Instrument :
 ECD_S
 ClientSampleId :
 END-OF-TRENCH



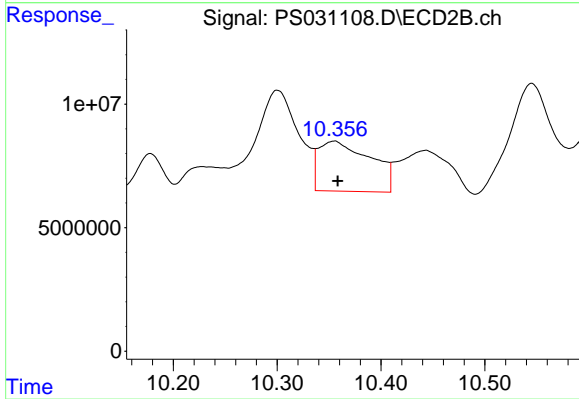
#11 2,4,5-TP (SILVEX)

R.T.: 9.912 min
 Delta R.T.: -0.020 min
 Response: 439878174
 Conc: 29.97 ng/ml



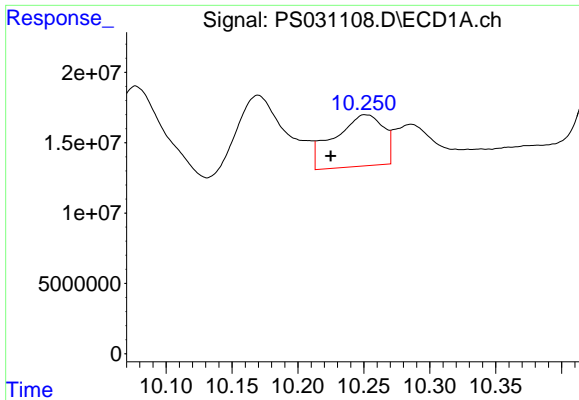
#12 2,4,5-T

R.T.: 9.614 min
 Delta R.T.: -0.033 min
 Response: 17527225
 Conc: 1.15 ng/ml



#12 2,4,5-T

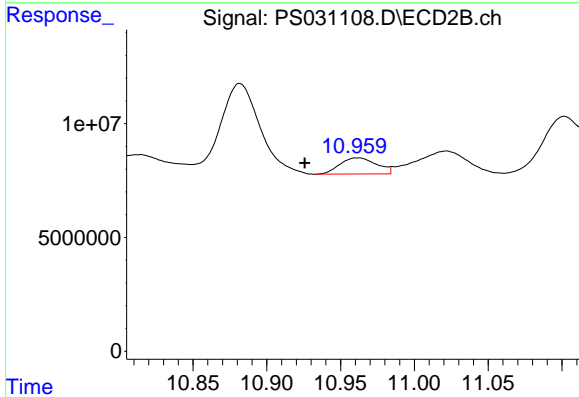
R.T.: 10.355 min
 Delta R.T.: -0.004 min
 Response: 70588193
 Conc: 5.04 ng/ml



#13 2,4-DB

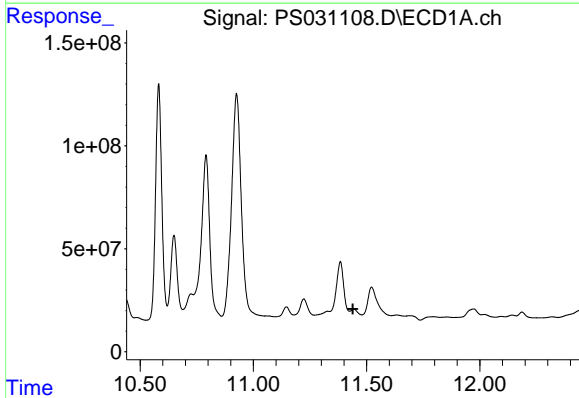
R.T.: 10.251 min
 Delta R.T.: 0.026 min
 Response: 94767443
 Conc: 43.66 ng/ml

Instrument :
 ECD_S
 ClientSampleId :
 END-OF-TRENCH



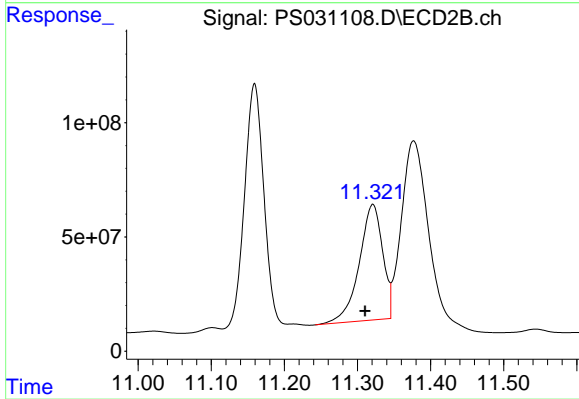
#13 2,4-DB

R.T.: 10.962 min
 Delta R.T.: 0.036 min
 Response: 12320815
 Conc: 10.41 ng/ml



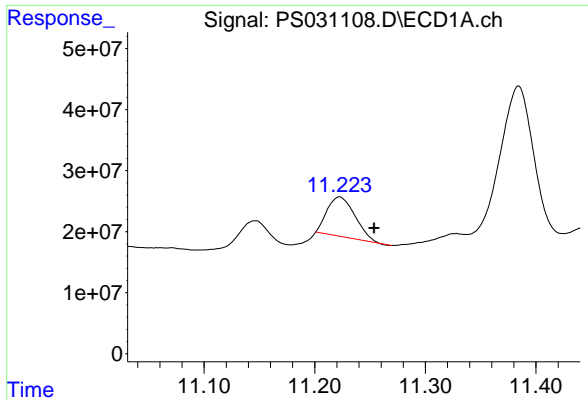
#14 DINOSEB

R.T.: 11.443 min
 Delta R.T.: 0.004 min
 Response: -116926916
 Conc: N.D.



#14 DINOSEB

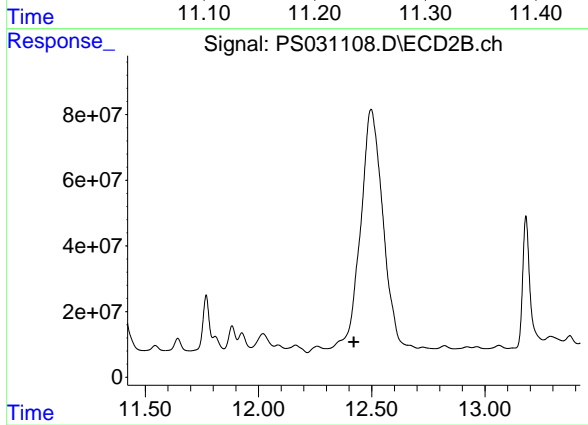
R.T.: 11.321 min
 Delta R.T.: 0.010 min
 Response: 1127074657
 Conc: 99.29 ng/ml



#15 Picloram

R.T.: 11.223 min
Delta R.T.: -0.031 min
Response: 112495120
Conc: 7.72 ng/ml

Instrument :
ECD_S
ClientSampleId :
END-OF-TRENCH



#15 Picloram

R.T.: 0.000 min
Exp R.T. : 12.421 min
Response: 0
Conc: N.D.