

Data Path : Z:\pestpcbsrv\HPCHEM1\ECD_S\Data\PS071725\
 Data File : PS031109.D
 Signal(s) : Signal #1: ECD1A.ch Signal #2: ECD2B.ch
 Acq On : 17 Jul 2025 20:49
 Operator : AR\AJ
 Sample : I.BLK
 Misc :
 ALS Vial : 2 Sample Multiplier: 1

Instrument :
 ECD_S
 ClientSampleId :
 I.BLK

Integration File signal 1: autoint1.e
 Integration File signal 2: autoint2.e
 Quant Time: Jul 17 23:04:34 2025
 Quant Method : Z:\pestpcbsrv\HPCHEM1\ECD_S\Method\PS071125.M
 Quant Title : 8080.M
 QLast Update : Mon Jul 14 05:51:06 2025
 Response via : Initial Calibration
 Integrator: ChemStation

Volume Inj. : 1 µl
 Signal #1 Phase : ZB-MR2 Signal #2 Phase: ZB-MR2
 Signal #1 Info : 30M x 0.32mm x0.5 Signal #2 Info : 30M x 0.32mm x 0.25µm

Compound	RT#1	RT#2	Resp#1	Resp#2	ng/ml	ng/ml

System Monitoring Compounds						
4) S 2,4-DCAA	7.329	7.768	1850.8E6	511.5E6	467.967	493.748
Target Compounds						
1) T Dalapon	2.747f	2.673f	44557003	49980239	7.314	17.581 #
2) T 3,5-DICHL...	6.482	0.000	3393483	0	<MDL	N.D. #
3) T 4-Nitroph...	7.124	0.000	7491205	0	5.549	N.D. #
5) T DICAMBA	7.518	7.982	2507707	4735306	<MDL	<MDL #
6) T MCPP	7.727	0.000	937968	0	<MDL	N.D. #
7) T MCPA	7.861	8.280f	750908	66070590	<MDL	20.611 #
8) T DICHLORPROP	8.224	0.000	2496723	0	<MDL	N.D. #
10) T Pentachlo...	8.766	9.549	8625602	6781525	<MDL	<MDL #
11) T 2,4,5-TP ...	9.347	9.931	8081857	15994365	<MDL	1.090 #
12) T 2,4,5-T	9.646	10.370	6080278	5801659	<MDL	<MDL #
13) T 2,4-DB	10.214	10.963f	1698442	9292119	<MDL	7.853 #
14) T DINOSEB	11.432	11.312	3626596	2448074	<MDL	<MDL #
15) T Picloram	11.250	0.000	16365700	0	1.123	N.D. #
16) T DCPA	11.730	0.000	11295392	0	<MDL	N.D. #

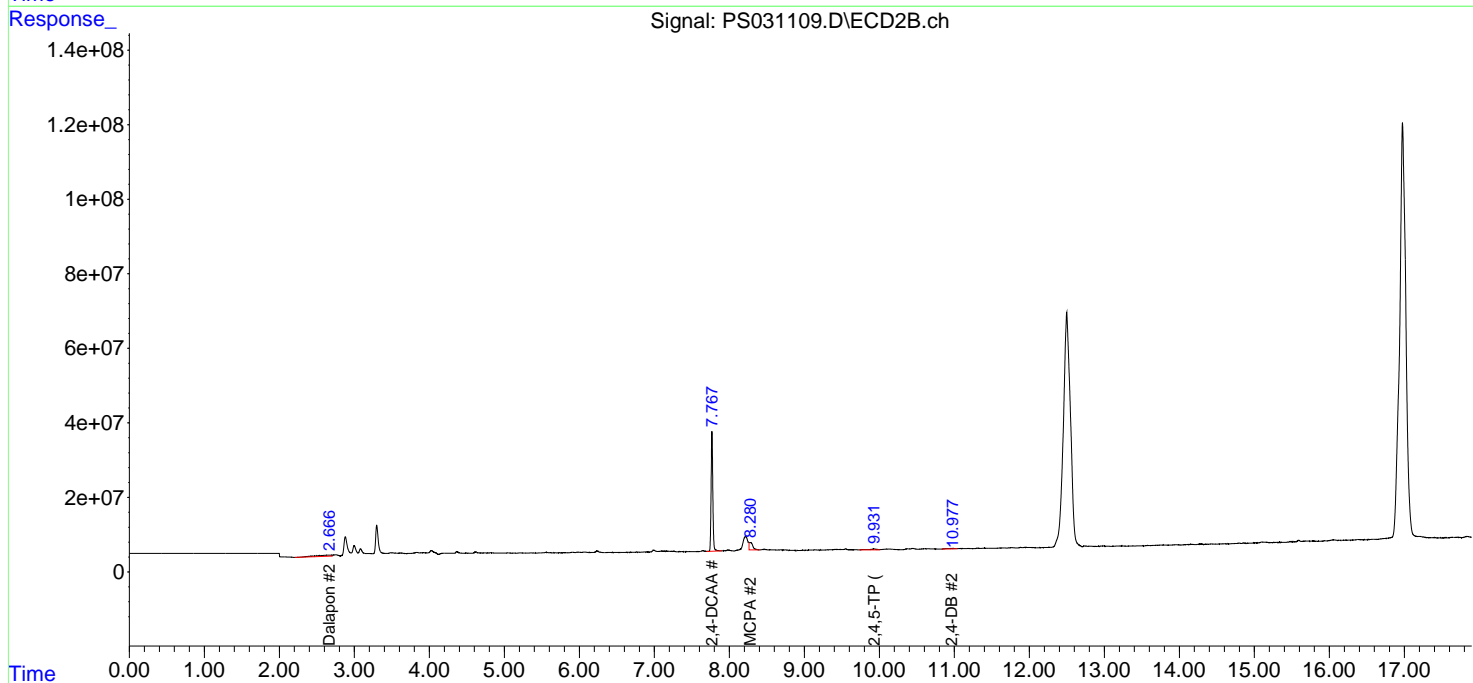
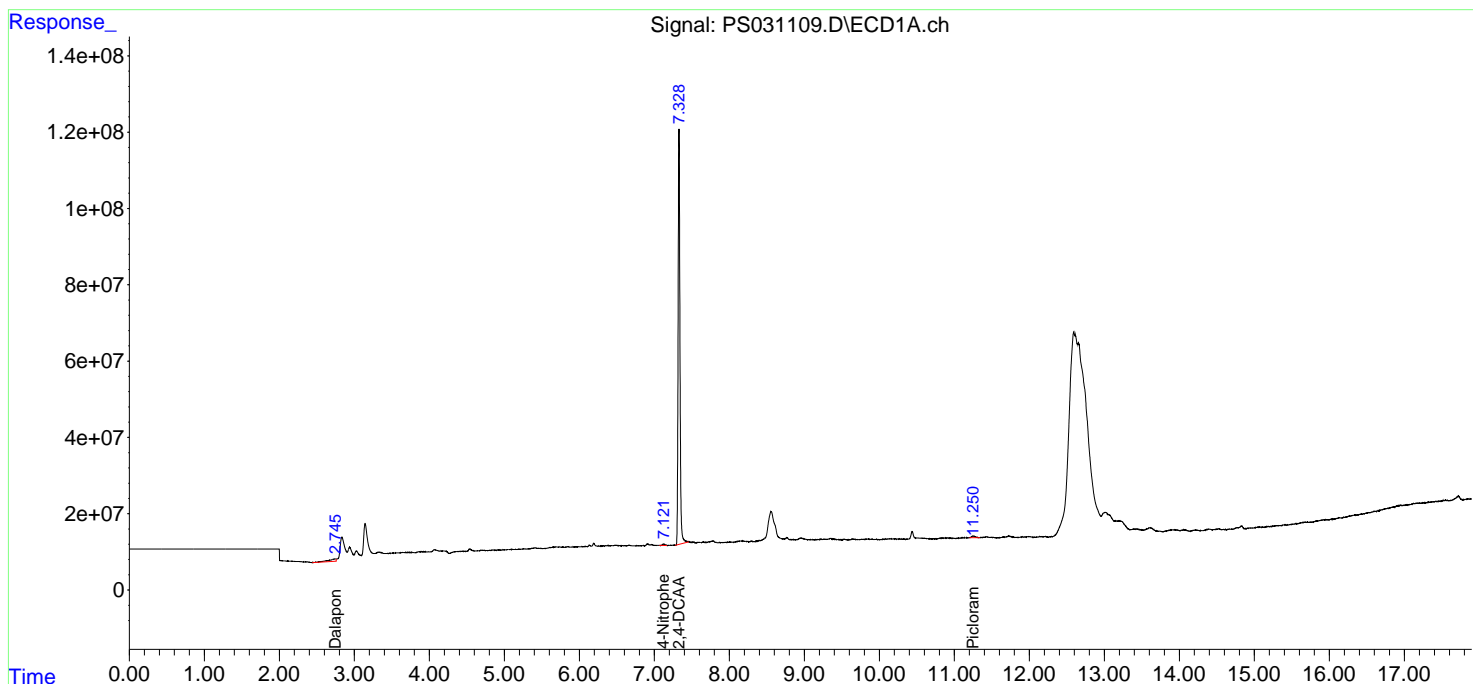
(f)=RT Delta > 1/2 Window (#)=Amounts differ by > 25% (m)=manual int.

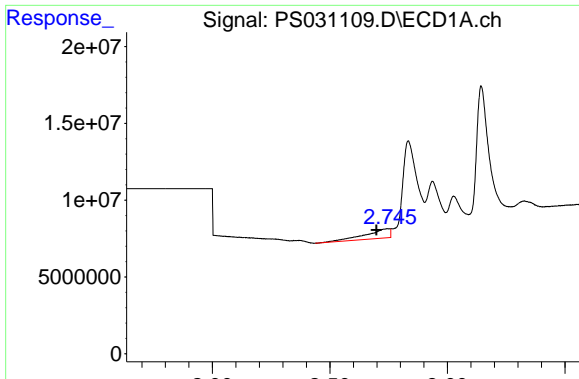
Data Path : Z:\pestpcbsrv\HPCHEM1\ECD_S\Data\PS071725\
 Data File : PS031109.D
 Signal(s) : Signal #1: ECD1A.ch Signal #2: ECD2B.ch
 Acq On : 17 Jul 2025 20:49
 Operator : AR\AJ
 Sample : I.BLK
 Misc :
 ALS Vial : 2 Sample Multiplier: 1

Instrument :
 ECD_S
 ClientSampleId :
 I.BLK

Integration File signal 1: autoint1.e
 Integration File signal 2: autoint2.e
 Quant Time: Jul 17 23:04:34 2025
 Quant Method : Z:\pestpcbsrv\HPCHEM1\ECD_S\Method\PS071125.M
 Quant Title : 8080.M
 QLast Update : Mon Jul 14 05:51:06 2025
 Response via : Initial Calibration
 Integrator: ChemStation

Volume Inj. : 1 µl
 Signal #1 Phase : ZB-MR1 Signal #2 Phase: ZB-MR2
 Signal #1 Info : 30M x 0.32mm x0.5 Signal #2 Info : 30M x 0.32mm x 0.25µm

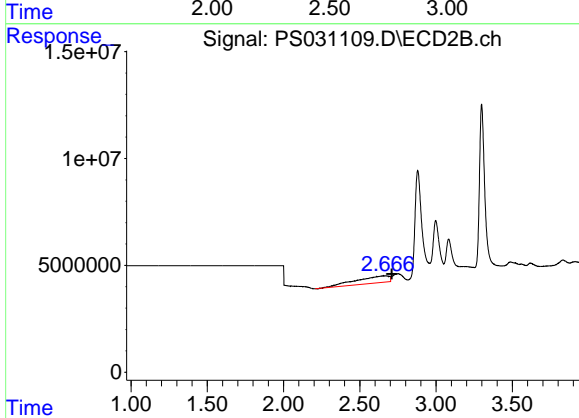




#1 Dalapon

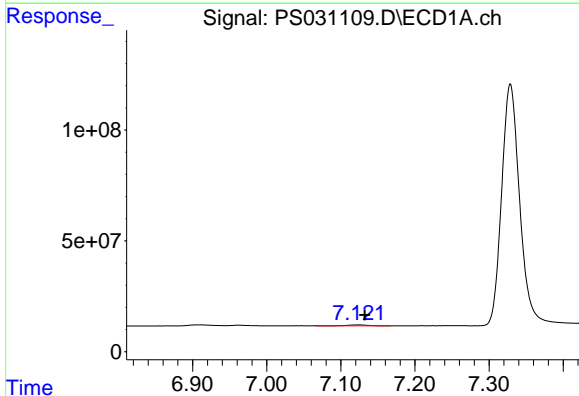
R.T.: 2.747 min
 Delta R.T.: 0.049 min
 Response: 44557003
 Conc: 7.31 ng/ml

Instrument :
 ECD_S
 ClientSampleId :
 I.BLK



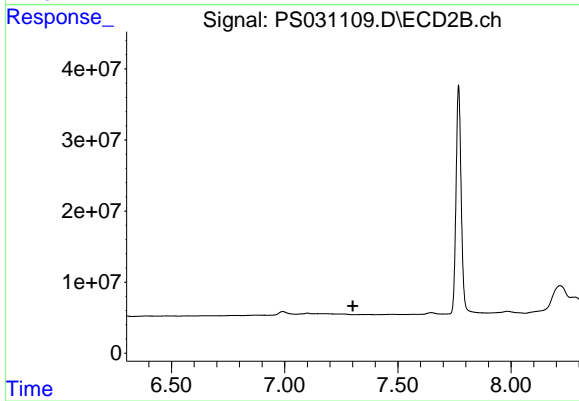
#1 Dalapon

R.T.: 2.673 min
 Delta R.T.: -0.036 min
 Response: 49980239
 Conc: 17.58 ng/ml



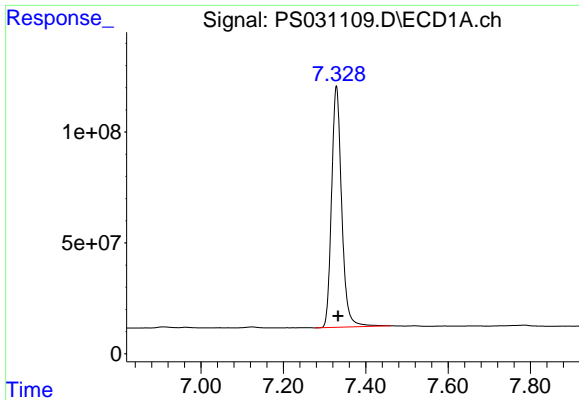
#3 4-Nitrophenol

R.T.: 7.124 min
 Delta R.T.: -0.009 min
 Response: 7491205
 Conc: 5.55 ng/ml



#3 4-Nitrophenol

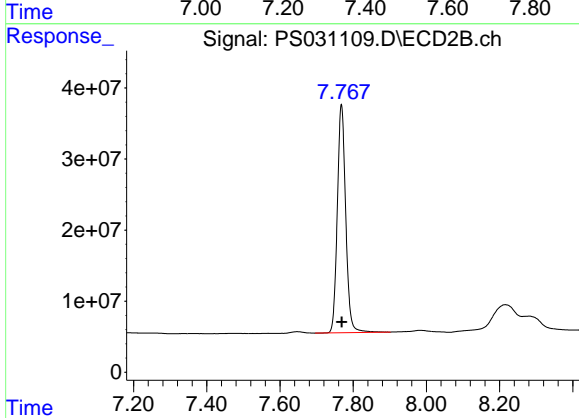
R.T.: 0.000 min
 Exp R.T. : 7.301 min
 Response: 0
 Conc: N.D.



#4 2,4-DCAA

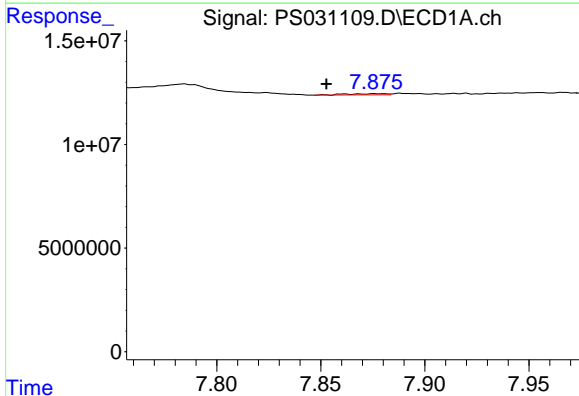
R.T.: 7.329 min
 Delta R.T.: -0.004 min
 Response: 1850843452
 Conc: 467.97 ng/ml

Instrument :
 ECD_S
 ClientSampleId :
 I.BLK



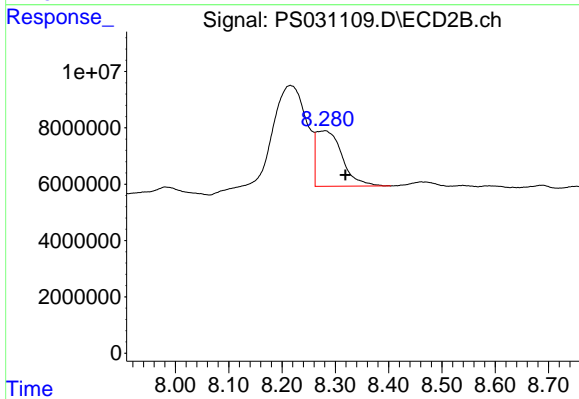
#4 2,4-DCAA

R.T.: 7.768 min
 Delta R.T.: 0.000 min
 Response: 511538961
 Conc: 493.75 ng/ml



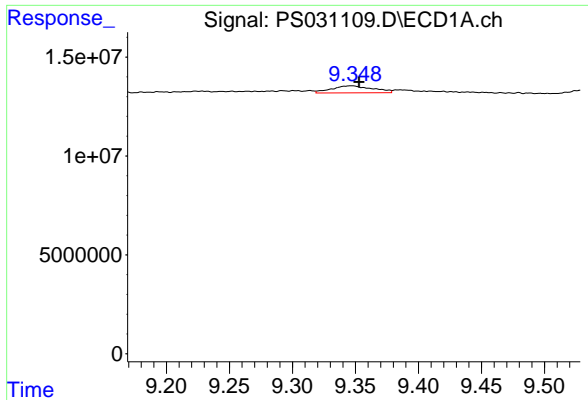
#7 MCPA

R.T.: 7.861 min
 Delta R.T.: 0.008 min
 Response: 750908
 Conc: N.D.



#7 MCPA

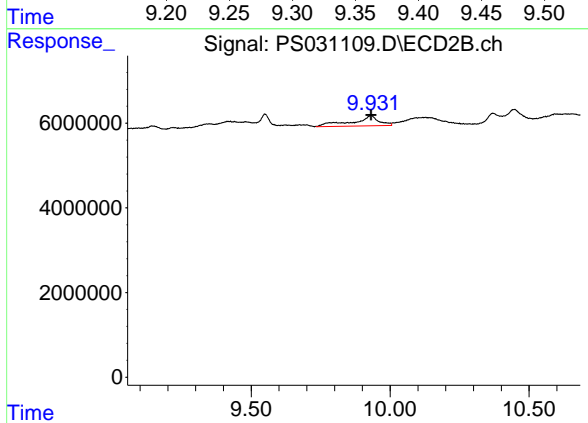
R.T.: 8.280 min
 Delta R.T.: -0.039 min
 Response: 66070590
 Conc: 20.61 ug/ml



#11 2,4,5-TP (SILVEX)

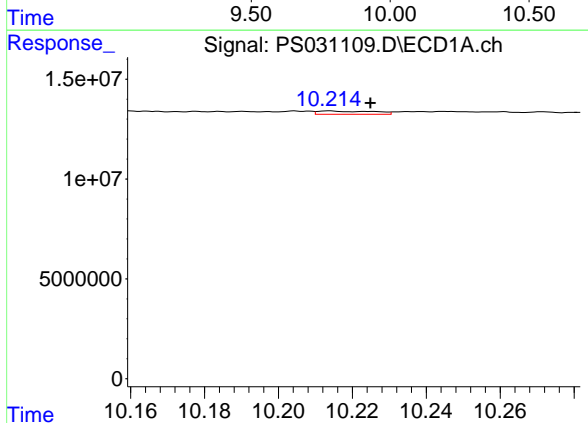
R.T.: 9.347 min
 Delta R.T.: -0.006 min
 Response: 8081857
 Conc: N.D.

Instrument :
 ECD_S
 ClientSampleId :
 I.BLK



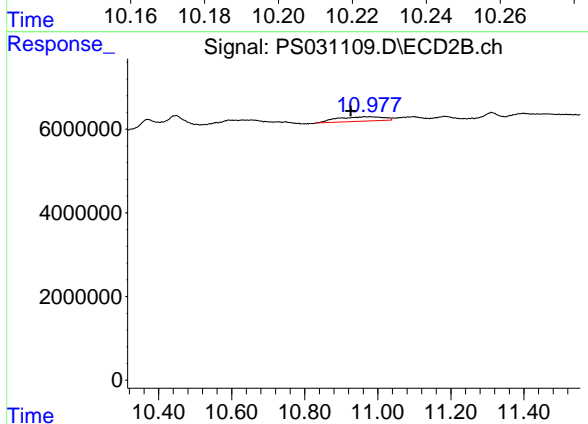
#11 2,4,5-TP (SILVEX)

R.T.: 9.931 min
 Delta R.T.: 0.000 min
 Response: 15994365
 Conc: 1.09 ng/ml



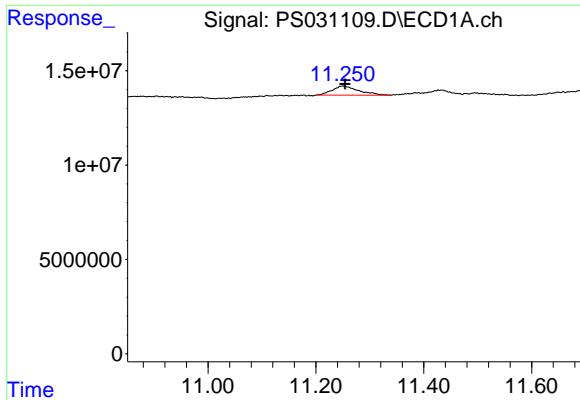
#13 2,4-DB

R.T.: 10.214 min
 Delta R.T.: -0.011 min
 Response: 1698442
 Conc: N.D.



#13 2,4-DB

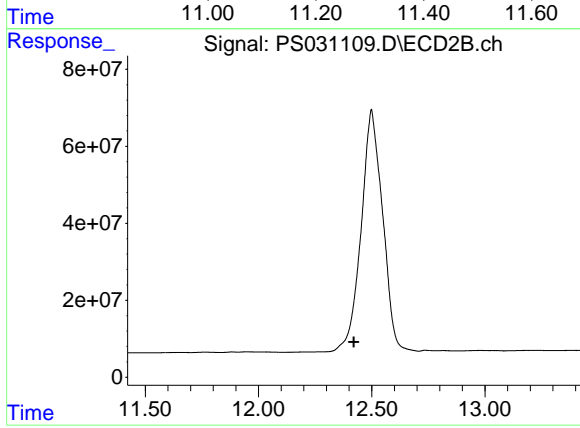
R.T.: 10.963 min
 Delta R.T.: 0.037 min
 Response: 9292119
 Conc: 7.85 ng/ml



#15 Picloram

R.T.: 11.250 min
Delta R.T.: -0.004 min
Response: 16365700
Conc: 1.12 ng/ml

Instrument :
ECD_S
ClientSampleId :
I.BLK



#15 Picloram

R.T.: 0.000 min
Exp R.T. : 12.421 min
Response: 0
Conc: N.D.