

Data Path : Z:\pestpcbsrv\HPCHEM1\ECD_S\Data\PS071725\
 Data File : PS031110.D
 Signal(s) : Signal #1: ECD1A.ch Signal #2: ECD2B.ch
 Acq On : 17 Jul 2025 21:13
 Operator : AR\AJ
 Sample : HSTDCCC750
 Misc :
 ALS Vial : 3 Sample Multiplier: 1

Instrument :
 ECD_S
 ClientSampleId :
 HSTDCCC750

Integration File signal 1: autoint1.e
 Integration File signal 2: autoint2.e
 Quant Time: Jul 17 23:04:44 2025
 Quant Method : Z:\pestpcbsrv\HPCHEM1\ECD_S\Method\PS071125.M
 Quant Title : 8080.M
 QLast Update : Mon Jul 14 05:51:06 2025
 Response via : Initial Calibration
 Integrator: ChemStation

Volume Inj. : 1 µl
 Signal #1 Phase : ZB-MR1 Signal #2 Phase: ZB-MR2
 Signal #1 Info : 30M x 0.32mm x0.5 Signal #2 Info : 30M x 0.32mm x 0.25µm

Compound	RT#1	RT#2	Resp#1	Resp#2	ng/ml	ng/ml

System Monitoring Compounds						
4) S 2,4-DCAA	7.327	7.768	2546.8E6	647.3E6	643.926	624.760
Target Compounds						
1) T Dalapon	2.693	2.706	3589.3E6	1680.0E6	589.206	590.941
2) T 3,5-DICHL...	6.490	6.715	3454.8E6	888.9E6	659.487	573.346
3) T 4-Nitroph...	7.127	7.301	1121.9E6	1016.0E6	830.998	582.587 #
5) T DICAMBA	7.517	7.970	10486.4E6	3858.0E6	668.309	595.704
6) T MCPP	7.698	8.068	585.6E6	127.3E6	63.639	59.556
7) T MCPA	7.848	8.317	773.8E6	189.2E6	70.950	59.012
8) T DICHLORPROP	8.229	8.690	2330.1E6	894.9E6	684.276	589.068
9) T 2,4-D	8.461	9.027	2414.6E6	1011.6E6	784.346	595.252
10) T Pentachlo...	8.768	9.550	36997.7E6	24233.0E6	736.103	628.857
11) T 2,4,5-TP ...	9.347	9.931	13909.0E6	8975.1E6	747.362	611.561
12) T 2,4,5-T	9.640	10.358	13108.6E6	8608.9E6	861.653	615.280 #
13) T 2,4-DB	10.217	10.926	2112.8E6	713.5E6	973.273	603.061 #
14) T DINOSEB	11.433	11.310	9491.4E6	6590.9E6	719.923	580.614
15) T Picloram	11.244	12.421	14105.0E6	15119.1E6	967.954	643.895 #
16) T DCPA	11.730	12.354	18307.5E6	13882.8E6	764.816	615.592

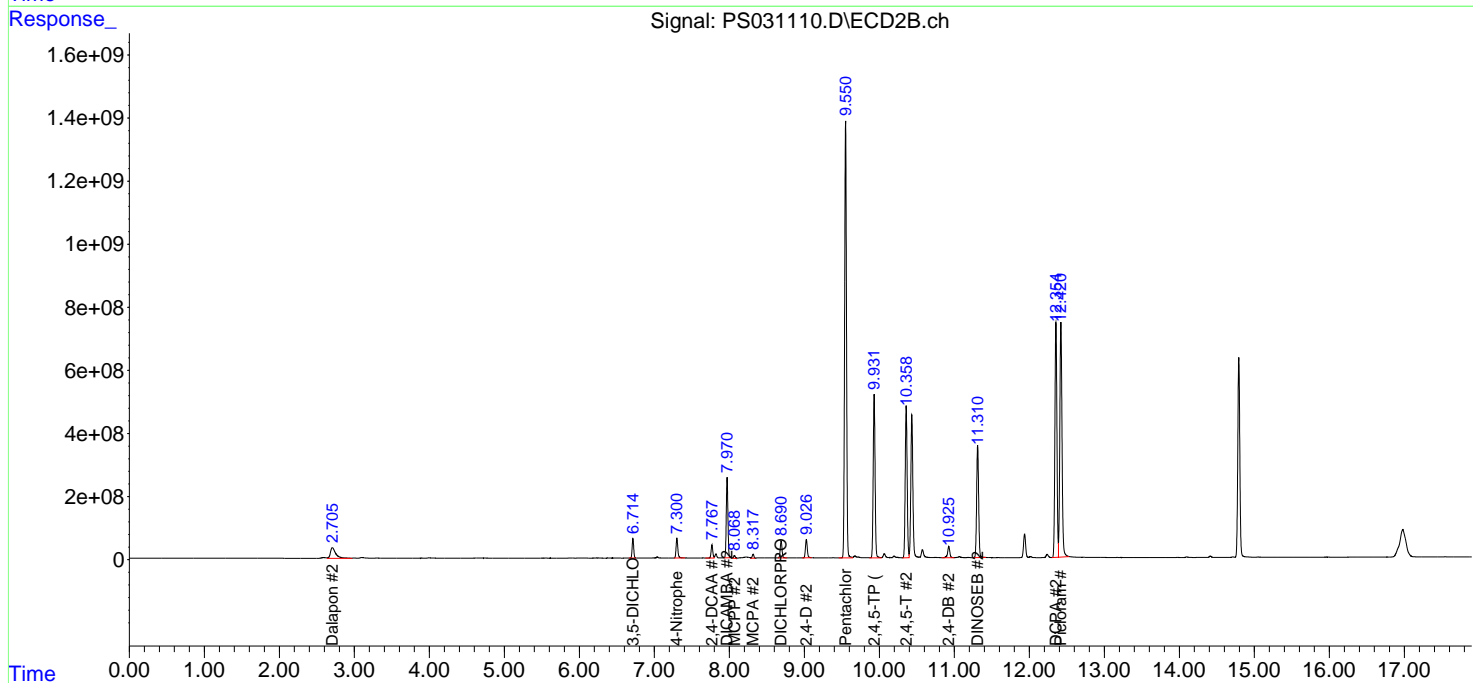
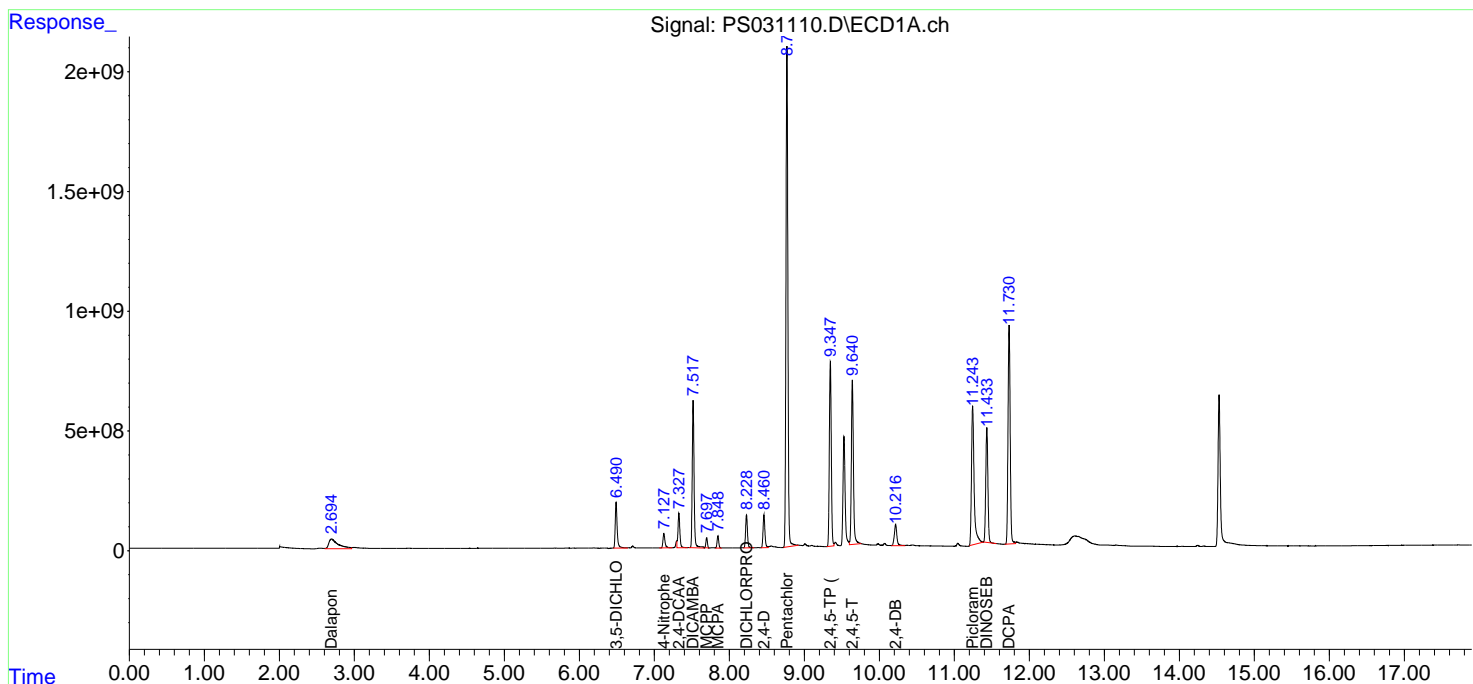
(f)=RT Delta > 1/2 Window (#)=Amounts differ by > 25% (m)=manual int.

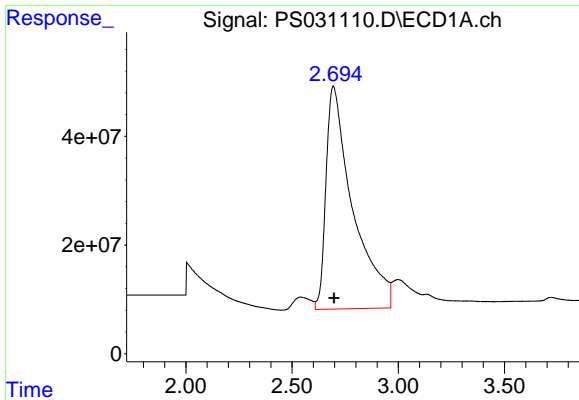
Data Path : Z:\pestpcbsrv\HPCHEM1\ECD_S\Data\PS071725\
 Data File : PS031110.D
 Signal(s) : Signal #1: ECD1A.ch Signal #2: ECD2B.ch
 Acq On : 17 Jul 2025 21:13
 Operator : AR\AJ
 Sample : HSTDCCC750
 Misc :
 ALS Vial : 3 Sample Multiplier: 1

Instrument :
 ECD_S
 ClientSampleId :
 HSTDCCC750

Integration File signal 1: autoint1.e
 Integration File signal 2: autoint2.e
 Quant Time: Jul 17 23:04:44 2025
 Quant Method : Z:\pestpcbsrv\HPCHEM1\ECD_S\Method\PS071125.M
 Quant Title : 8080.M
 QLast Update : Mon Jul 14 05:51:06 2025
 Response via : Initial Calibration
 Integrator: ChemStation

Volume Inj. : 1 µl
 Signal #1 Phase : ZB-MR1 Signal #2 Phase: ZB-MR2
 Signal #1 Info : 30M x 0.32mm x0.5 Signal #2 Info : 30M x 0.32mm x 0.25µm

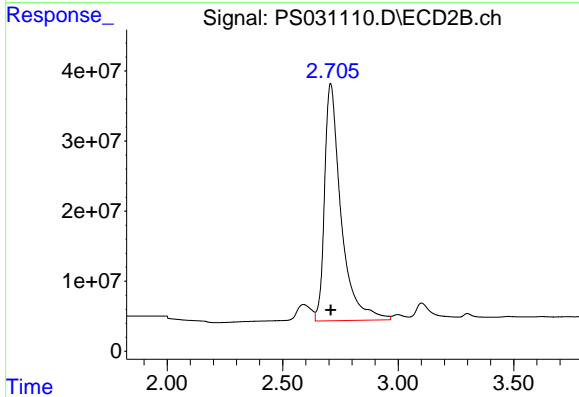




#1 Dalapon

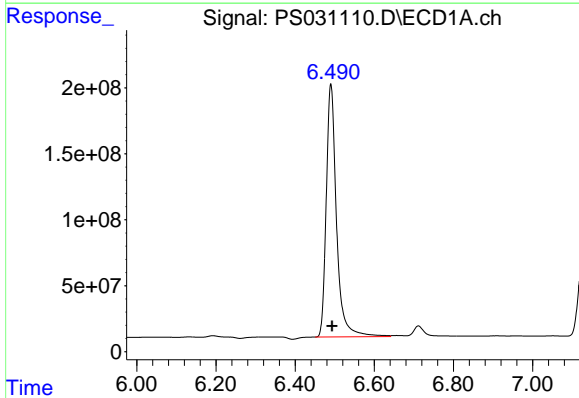
R.T.: 2.693 min
 Delta R.T.: -0.005 min
 Response: 3589281201
 Conc: 589.21 ng/ml

Instrument :
 ECD_S
 ClientSampleId :
 HSTDCCC750



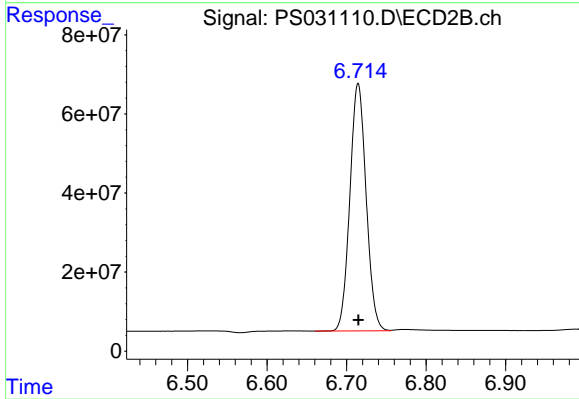
#1 Dalapon

R.T.: 2.706 min
 Delta R.T.: -0.002 min
 Response: 1679962597
 Conc: 590.94 ng/ml



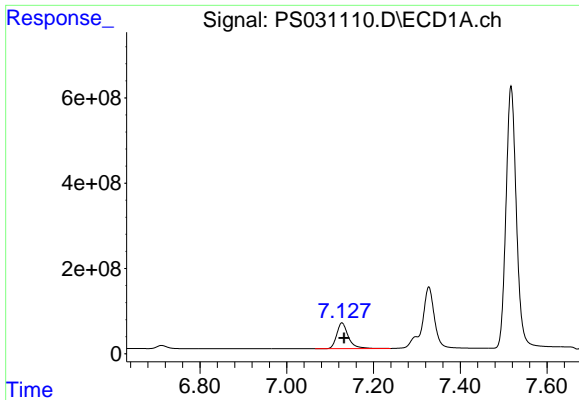
#2 3,5-DICHLOROBENZOIC ACID

R.T.: 6.490 min
 Delta R.T.: -0.004 min
 Response: 3454787376
 Conc: 659.49 ng/ml



#2 3,5-DICHLOROBENZOIC ACID

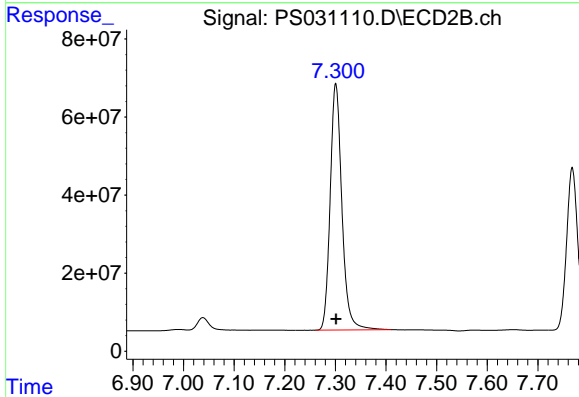
R.T.: 6.715 min
 Delta R.T.: 0.000 min
 Response: 888879051
 Conc: 573.35 ng/ml



#3 4-Nitrophenol

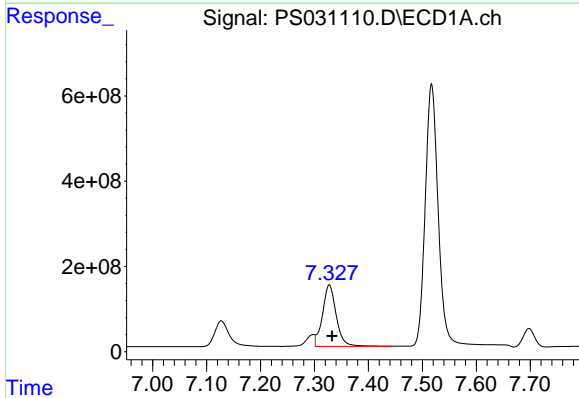
R.T.: 7.127 min
 Delta R.T.: -0.005 min
 Response: 1121853209
 Conc: 831.00 ng/ml

Instrument :
 ECD_S
 ClientSampleId :
 HSTDCCC750



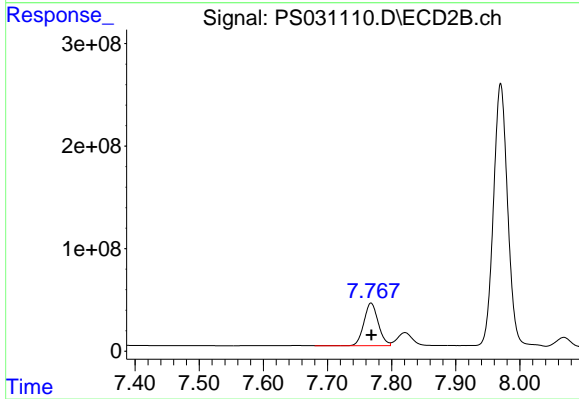
#3 4-Nitrophenol

R.T.: 7.301 min
 Delta R.T.: 0.000 min
 Response: 1015967515
 Conc: 582.59 ng/ml



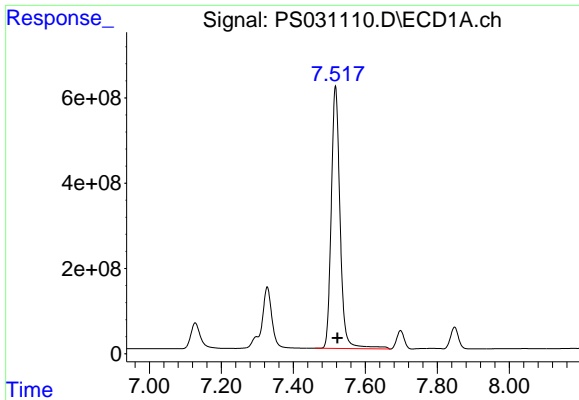
#4 2,4-DCAA

R.T.: 7.327 min
 Delta R.T.: -0.005 min
 Response: 2546775828
 Conc: 643.93 ng/ml



#4 2,4-DCAA

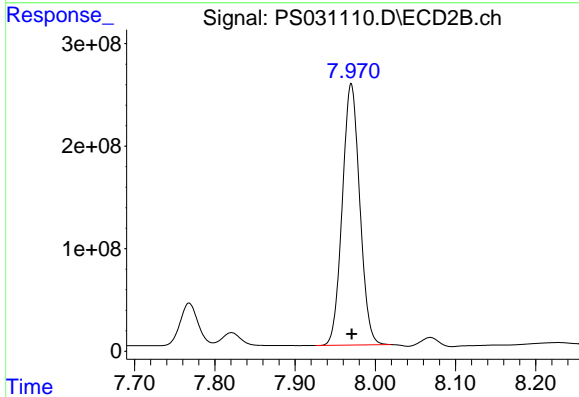
R.T.: 7.768 min
 Delta R.T.: 0.000 min
 Response: 647271971
 Conc: 624.76 ng/ml



#5 DICAMBA

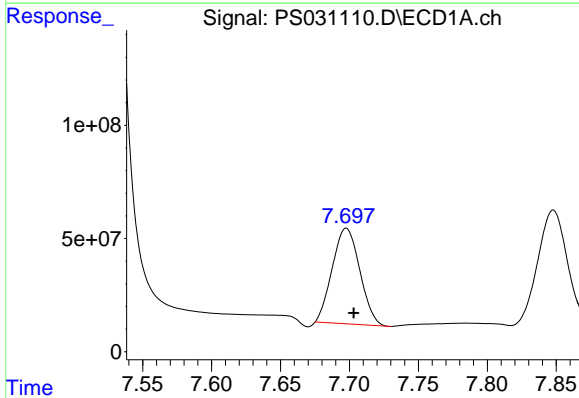
R.T.: 7.517 min
 Delta R.T.: -0.005 min
 Response: 10486370254
 Conc: 668.31 ng/ml

Instrument :
 ECD_S
 ClientSampleId :
 HSTDCCC750



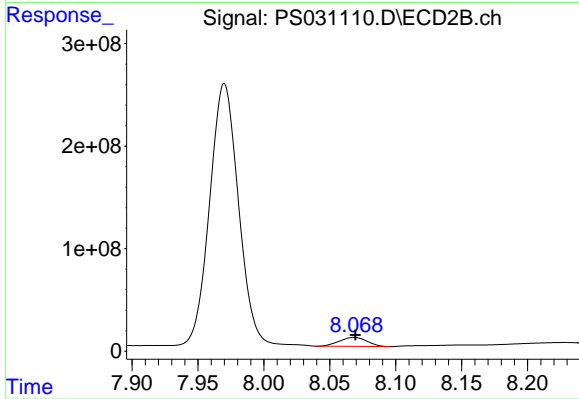
#5 DICAMBA

R.T.: 7.970 min
 Delta R.T.: 0.000 min
 Response: 3858027343
 Conc: 595.70 ng/ml



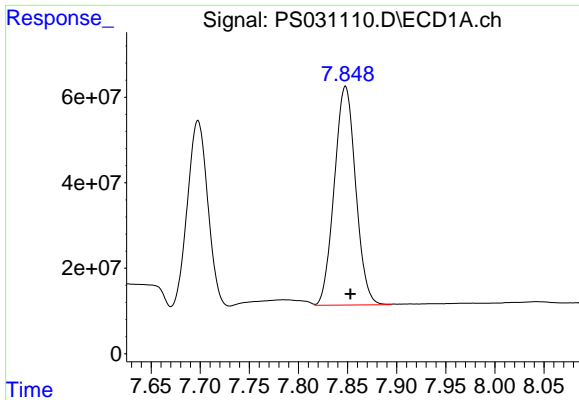
#6 MCP

R.T.: 7.698 min
 Delta R.T.: -0.005 min
 Response: 585561188
 Conc: 63.64 ug/ml



#6 MCP

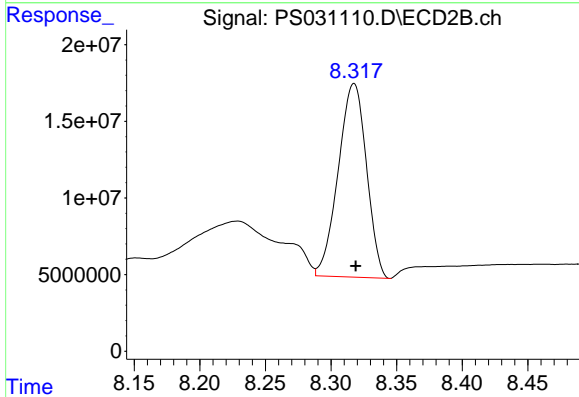
R.T.: 8.068 min
 Delta R.T.: 0.000 min
 Response: 127327147
 Conc: 59.56 ug/ml



#7 MCPA

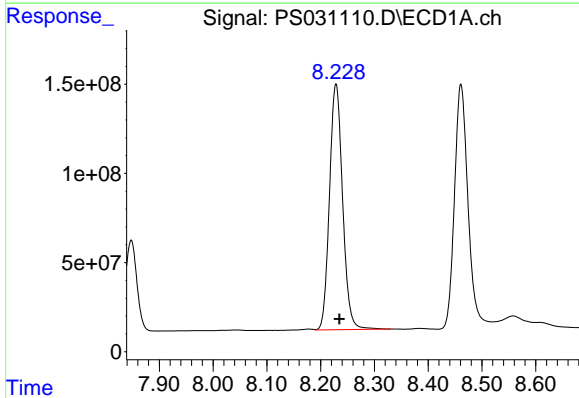
R.T.: 7.848 min
 Delta R.T.: -0.005 min
 Response: 773835488
 Conc: 70.95 ug/ml

Instrument :
 ECD_S
 ClientSampleId :
 HSTDCCC750



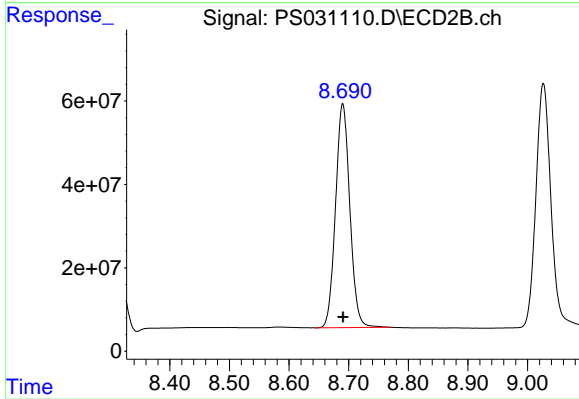
#7 MCPA

R.T.: 8.317 min
 Delta R.T.: -0.001 min
 Response: 189171656
 Conc: 59.01 ug/ml



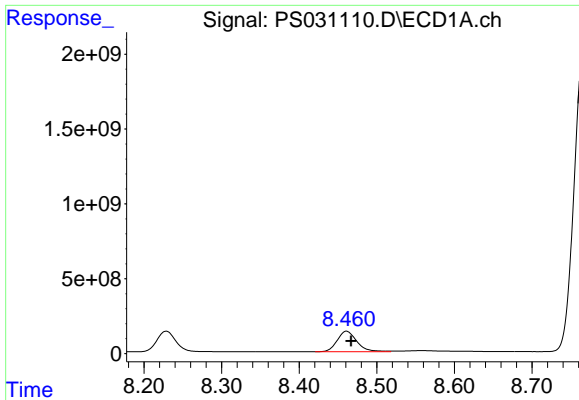
#8 DICHLORPROP

R.T.: 8.229 min
 Delta R.T.: -0.006 min
 Response: 2330066838
 Conc: 684.28 ng/ml



#8 DICHLORPROP

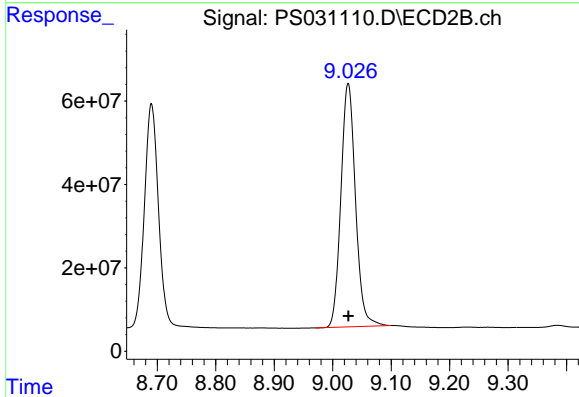
R.T.: 8.690 min
 Delta R.T.: 0.000 min
 Response: 894948075
 Conc: 589.07 ng/ml



#9 2,4-D

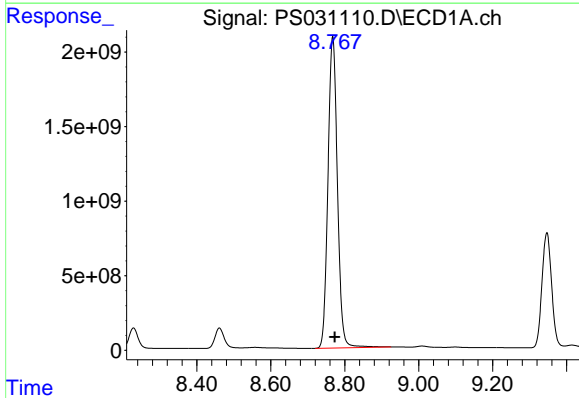
R.T.: 8.461 min
 Delta R.T.: -0.006 min
 Response: 2414558796
 Conc: 784.35 ng/ml

Instrument :
 ECD_S
 ClientSampleId :
 HSTDCCC750



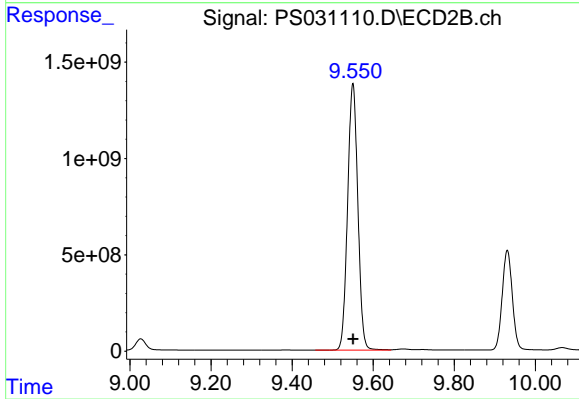
#9 2,4-D

R.T.: 9.027 min
 Delta R.T.: 0.000 min
 Response: 1011609650
 Conc: 595.25 ng/ml



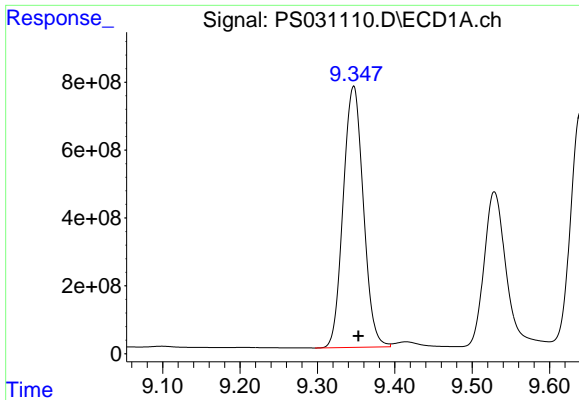
#10 Pentachlorophenol

R.T.: 8.768 min
 Delta R.T.: -0.006 min
 Response: 36997665821
 Conc: 736.10 ng/ml



#10 Pentachlorophenol

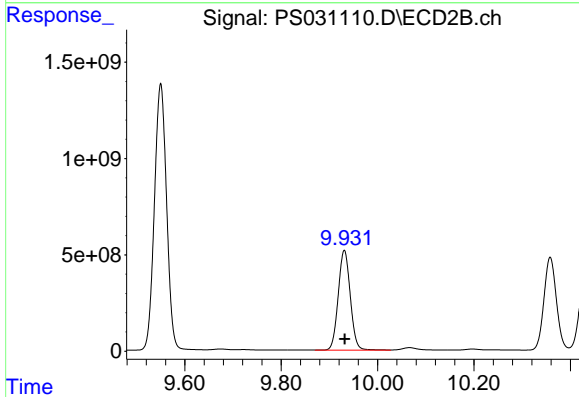
R.T.: 9.550 min
 Delta R.T.: 0.000 min
 Response: 24233027089
 Conc: 628.86 ng/ml



#11 2,4,5-TP (SILVEX)

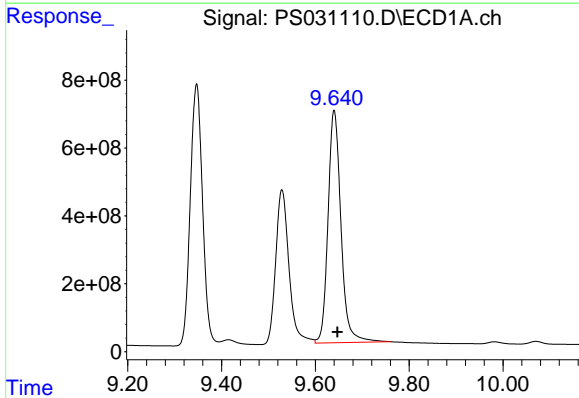
R.T.: 9.347 min
 Delta R.T.: -0.006 min
 Response: 13908952437
 Conc: 747.36 ng/ml

Instrument :
 ECD_S
 ClientSampleId :
 HSTDCCC750



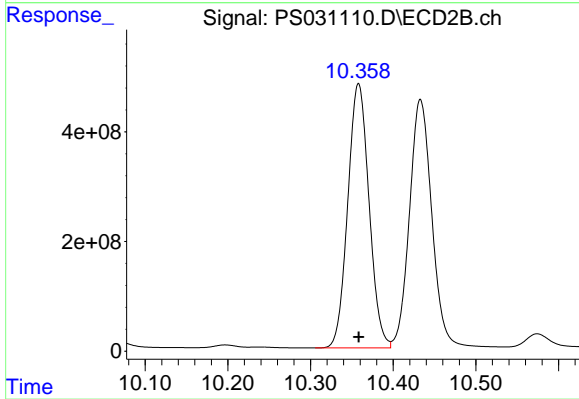
#11 2,4,5-TP (SILVEX)

R.T.: 9.931 min
 Delta R.T.: 0.000 min
 Response: 8975134496
 Conc: 611.56 ng/ml



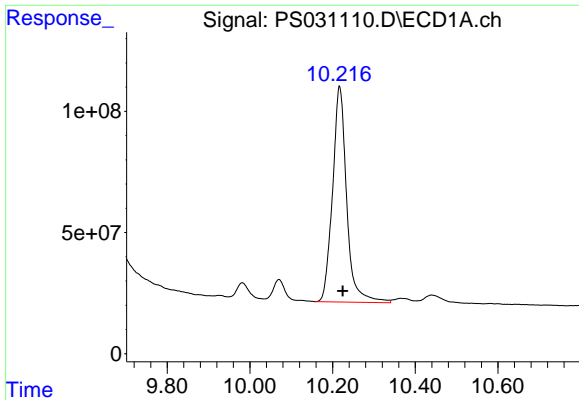
#12 2,4,5-T

R.T.: 9.640 min
 Delta R.T.: -0.007 min
 Response: 13108596727
 Conc: 861.65 ng/ml



#12 2,4,5-T

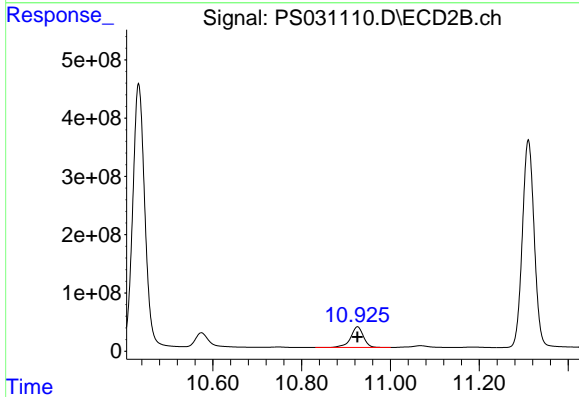
R.T.: 10.358 min
 Delta R.T.: 0.000 min
 Response: 8608878381
 Conc: 615.28 ng/ml



#13 2,4-DB

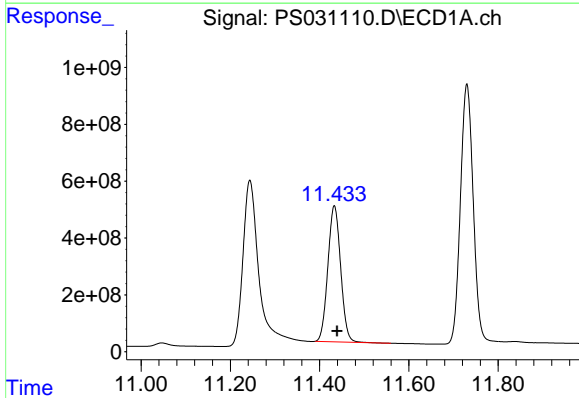
R.T.: 10.217 min
 Delta R.T.: -0.008 min
 Response: 2112771725
 Conc: 973.27 ng/ml

Instrument :
 ECD_S
 ClientSampleId :
 HSTDCCC750



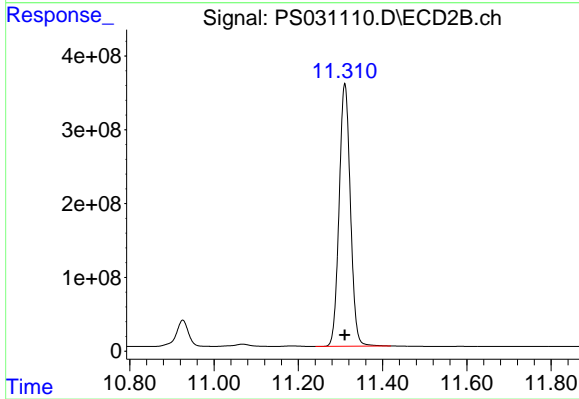
#13 2,4-DB

R.T.: 10.926 min
 Delta R.T.: 0.000 min
 Response: 713530795
 Conc: 603.06 ng/ml



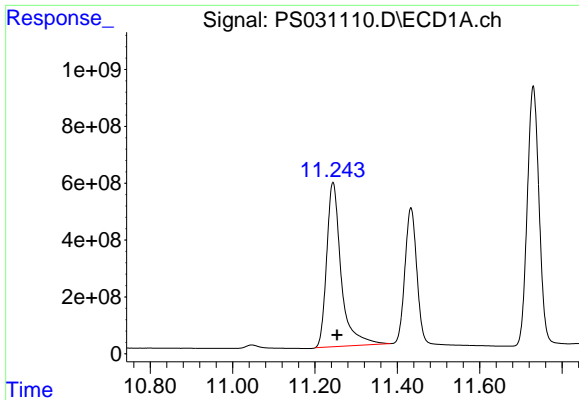
#14 DINOSEB

R.T.: 11.433 min
 Delta R.T.: -0.006 min
 Response: 9491399076
 Conc: 719.92 ng/ml



#14 DINOSEB

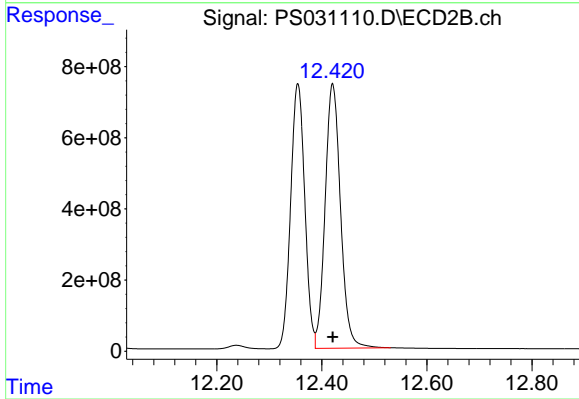
R.T.: 11.310 min
 Delta R.T.: 0.000 min
 Response: 6590854753
 Conc: 580.61 ng/ml



#15 Picloram

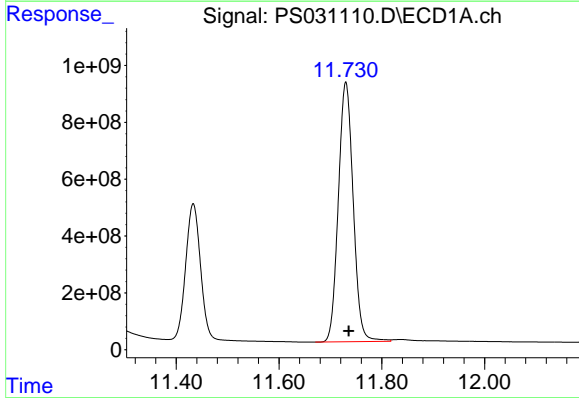
R.T.: 11.244 min
 Delta R.T.: -0.010 min
 Response: 14104969747
 Conc: 967.95 ng/ml

Instrument :
 ECD_S
 ClientSampleId :
 HSTDCCC750



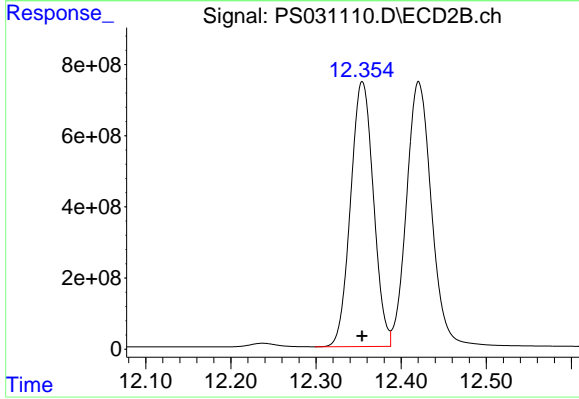
#15 Picloram

R.T.: 12.421 min
 Delta R.T.: 0.000 min
 Response: 15119074468
 Conc: 643.89 ng/ml



#16 DCPA

R.T.: 11.730 min
 Delta R.T.: -0.006 min
 Response: 18307533806
 Conc: 764.82 ng/ml



#16 DCPA

R.T.: 12.354 min
 Delta R.T.: 0.000 min
 Response: 13882818447
 Conc: 615.59 ng/ml