

Data Path : Z:\pestpcbsrv\HPCHEM1\ECD_S\Data\PS071725\
 Data File : PS031113.D
 Signal(s) : Signal #1: ECD1A.ch Signal #2: ECD2B.ch
 Acq On : 17 Jul 2025 22:26
 Operator : AR\AJ
 Sample : PB168847TB
 Misc :
 ALS Vial : 17 Sample Multiplier: 1

Instrument :
 ECD_S
 ClientSampleId :
 PB168847TB

Integration File signal 1: autoint1.e
 Integration File signal 2: autoint2.e
 Quant Time: Jul 17 23:05:24 2025
 Quant Method : Z:\pestpcbsrv\HPCHEM1\ECD_S\Method\PS071125.M
 Quant Title : 8080.M
 QLast Update : Mon Jul 14 05:51:06 2025
 Response via : Initial Calibration
 Integrator: ChemStation

Volume Inj. : 1 µl
 Signal #1 Phase : ZB-MR2 Signal #2 Phase: ZB-MR2
 Signal #1 Info : 30M x 0.32mm x0.5 Signal #2 Info : 30M x 0.32mm x 0.25µm

	Compound	RT#1	RT#2	Resp#1	Resp#2	ng/ml	ng/ml

System Monitoring Compounds							
4) S	2,4-DCAA	7.327	7.767	3014.2E6	584.5E6	762.099	564.180 #
Target Compounds							
1) T	Dalapon	2.664f	2.695	1711.2E6	2154.8E6	280.901	757.969 #
2) T	3,5-DICHL...	6.506	6.687f	107.3E6	81405913	20.482	52.509 #
3) T	4-Nitroph...	7.111	0.000	6426814	0	4.761	N.D. #
6) T	MCPD	0.000	8.074	0	3383277	N.D.	1.582
7) T	MCPA	7.839	8.307	15019662	89035571	1.377	27.774 #
8) T	DICHLORPROP	8.244	8.671	23564958	8457018	6.920	5.567
9) T	2,4-D	8.450	0.000	8783157	0	2.853	N.D. #
10) T	Pentachlo...	8.774	9.512f	6828742	16069845	<MDL	<MDL #
11) T	2,4,5-TP ...	9.353	9.912	608.0E6	1112.5E6	32.668	75.803 #
12) T	2,4,5-T	9.616f	10.359	21638095	56438577	1.422	4.034 #
13) T	2,4-DB	10.252f	10.961f	128.3E6	23802363	59.117	20.117 #
14) T	DINOSEB	11.444	11.320	-239541515	1351.9E6	N.D.	119.093
15) T	Picloram	11.220f	0.000	34610558	0	2.375	N.D. #
16) T	DCPA	11.694f	0.000	19715896	0	<MDL	N.D. #

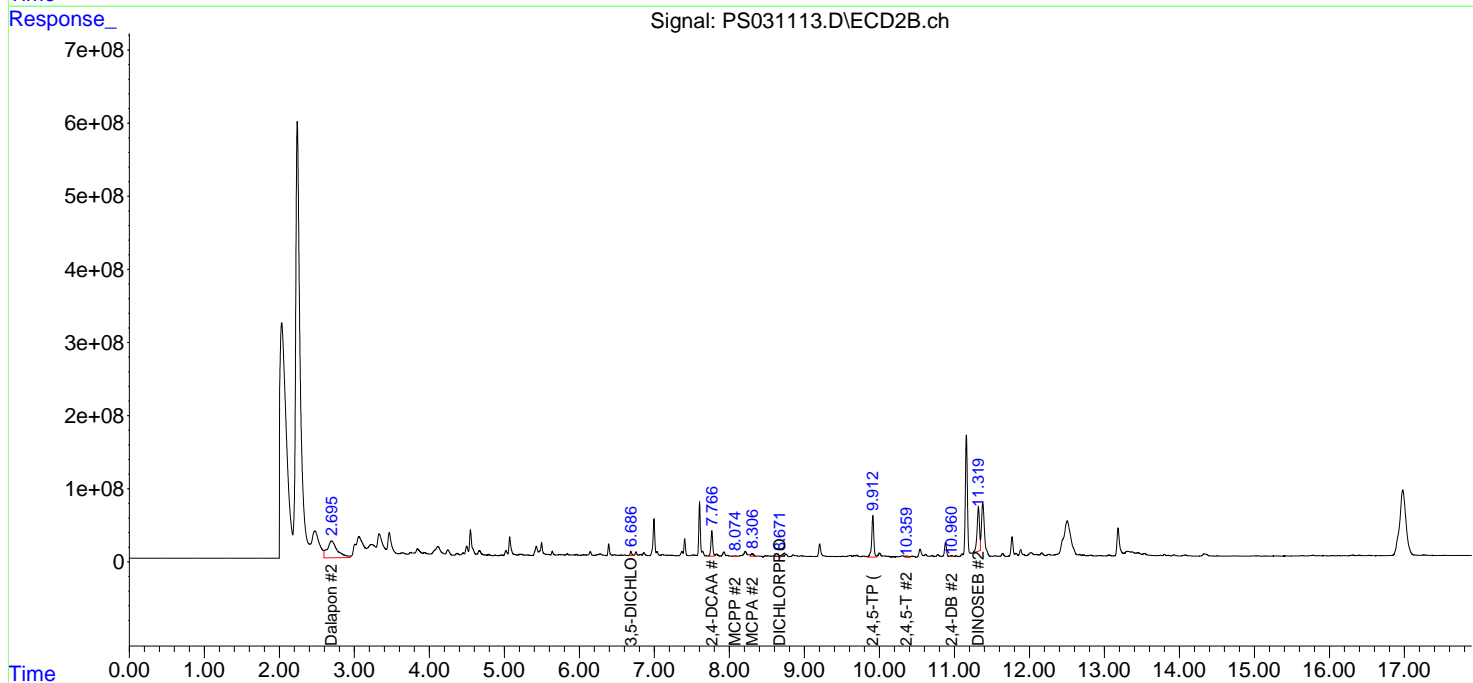
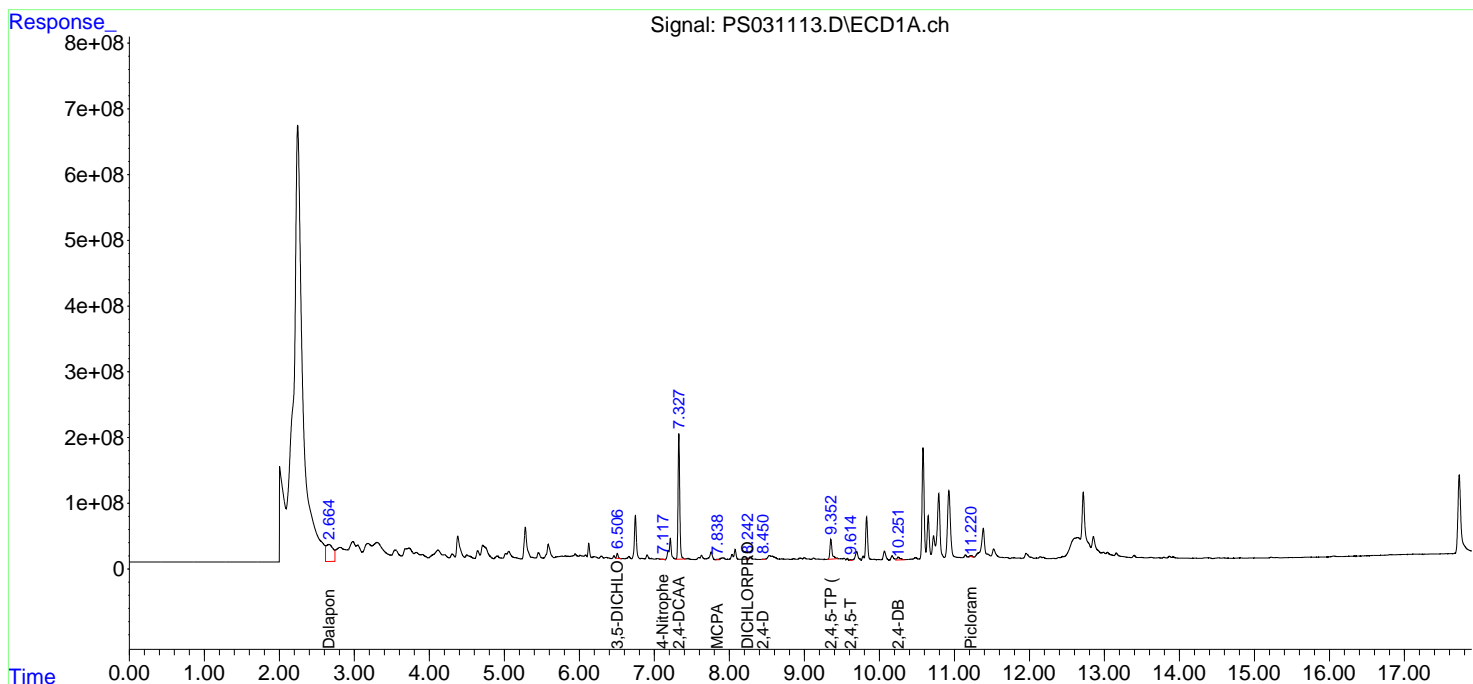
(f)=RT Delta > 1/2 Window (#)=Amounts differ by > 25% (m)=manual int.

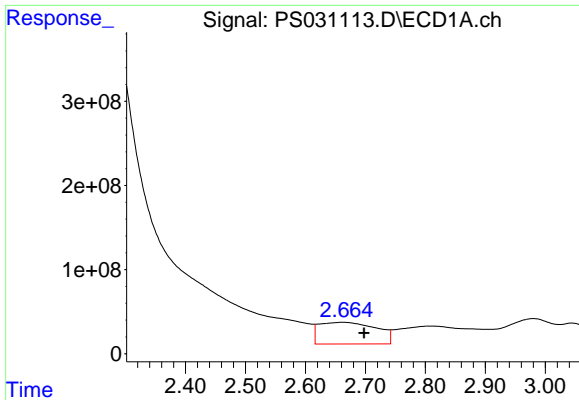
Data Path : Z:\pestpcbsrv\HPCHEM1\ECD_S\Data\PS071725\
 Data File : PS031113.D
 Signal(s) : Signal #1: ECD1A.ch Signal #2: ECD2B.ch
 Acq On : 17 Jul 2025 22:26
 Operator : AR\AJ
 Sample : PB168847TB
 Misc :
 ALS Vial : 17 Sample Multiplier: 1

Instrument :
 ECD_S
 ClientSampleId :
 PB168847TB

Integration File signal 1: autoint1.e
 Integration File signal 2: autoint2.e
 Quant Time: Jul 17 23:05:24 2025
 Quant Method : Z:\pestpcbsrv\HPCHEM1\ECD_S\Method\PS071125.M
 Quant Title : 8080.M
 QLast Update : Mon Jul 14 05:51:06 2025
 Response via : Initial Calibration
 Integrator: ChemStation

Volume Inj. : 1 µl
 Signal #1 Phase : ZB-MR1 Signal #2 Phase: ZB-MR2
 Signal #1 Info : 30M x 0.32mm x0.5 Signal #2 Info : 30M x 0.32mm x 0.25µm

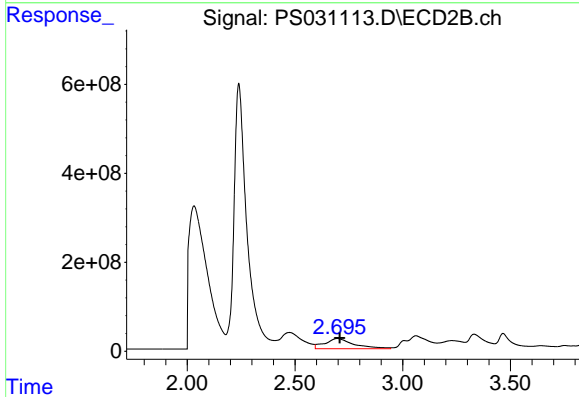




#1 Dalapon

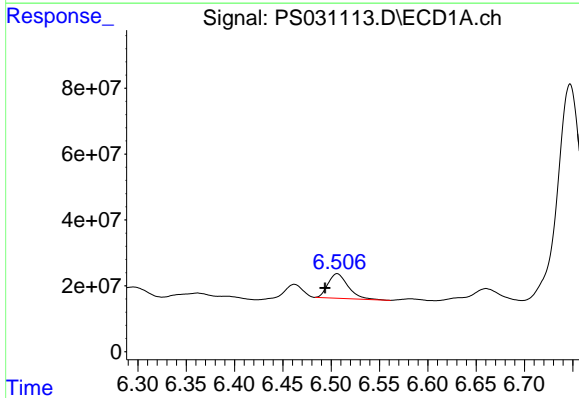
R.T.: 2.664 min
 Delta R.T.: -0.034 min
 Response: 1711168617
 Conc: 280.90 ng/ml

Instrument :
 ECD_S
 ClientSampleId :
 PB168847TB



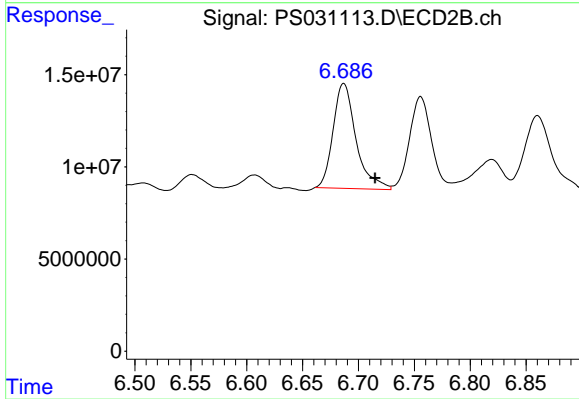
#1 Dalapon

R.T.: 2.695 min
 Delta R.T.: -0.013 min
 Response: 2154799479
 Conc: 757.97 ng/ml



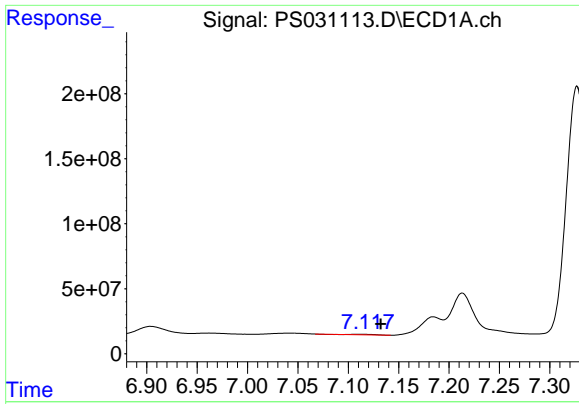
#2 3,5-DICHLOROBENZOIC ACID

R.T.: 6.506 min
 Delta R.T.: 0.012 min
 Response: 107298120
 Conc: 20.48 ng/ml



#2 3,5-DICHLOROBENZOIC ACID

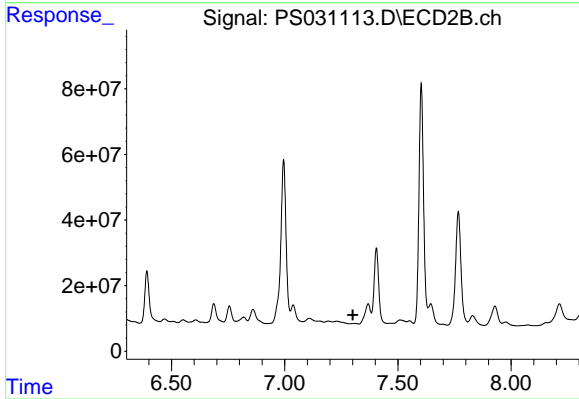
R.T.: 6.687 min
 Delta R.T.: -0.028 min
 Response: 81405913
 Conc: 52.51 ng/ml



#3 4-Nitrophenol

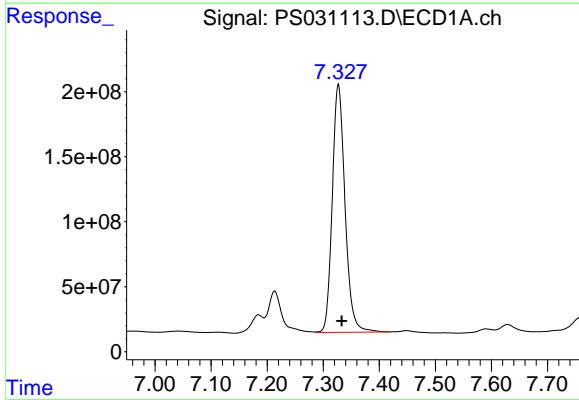
R.T.: 7.111 min
 Delta R.T.: -0.021 min
 Response: 6426814
 Conc: 4.76 ng/ml

Instrument :
 ECD_S
 ClientSampleId :
 PB168847TB



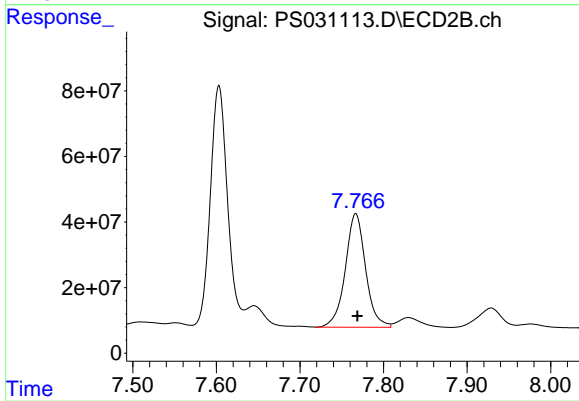
#3 4-Nitrophenol

R.T.: 0.000 min
 Exp R.T. : 7.301 min
 Response: 0
 Conc: N.D.



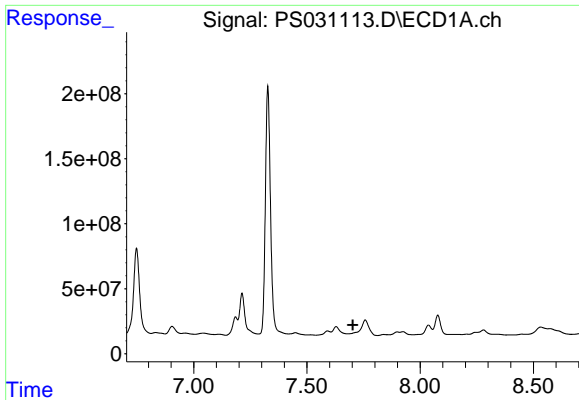
#4 2,4-DCAA

R.T.: 7.327 min
 Delta R.T.: -0.006 min
 Response: 3014157364
 Conc: 762.10 ng/ml



#4 2,4-DCAA

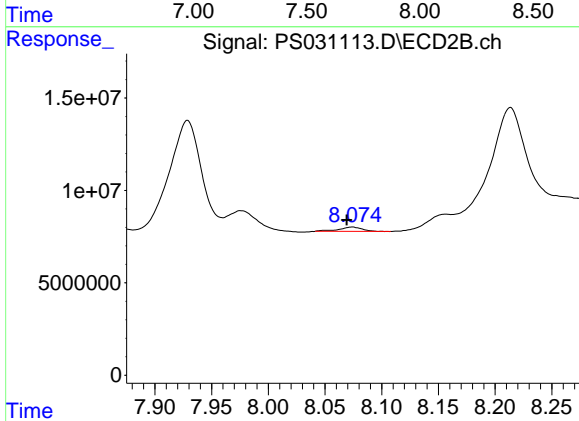
R.T.: 7.767 min
 Delta R.T.: -0.002 min
 Response: 584508767
 Conc: 564.18 ng/ml



#6 MCPP

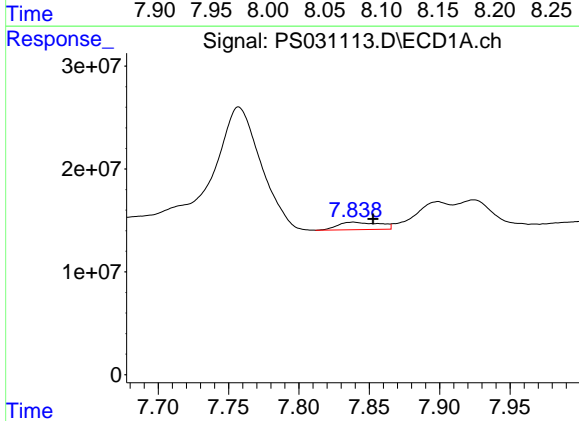
R.T.: 0.000 min
 Exp R.T.: 7.703 min
 Response: 0
 Conc: N.D.

Instrument :
 ECD_S
 ClientSampleId :
 PB168847TB



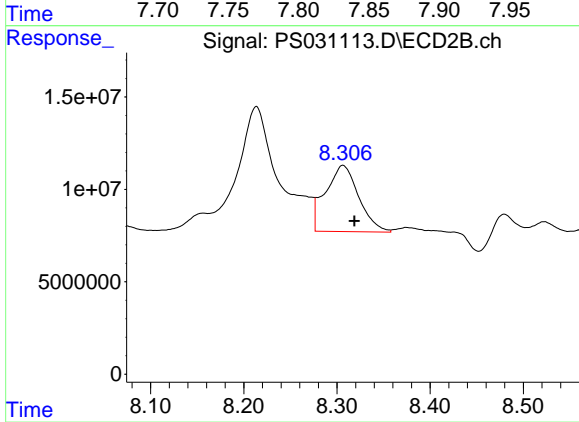
#6 MCPP

R.T.: 8.074 min
 Delta R.T.: 0.005 min
 Response: 3383277
 Conc: 1.58 ug/ml



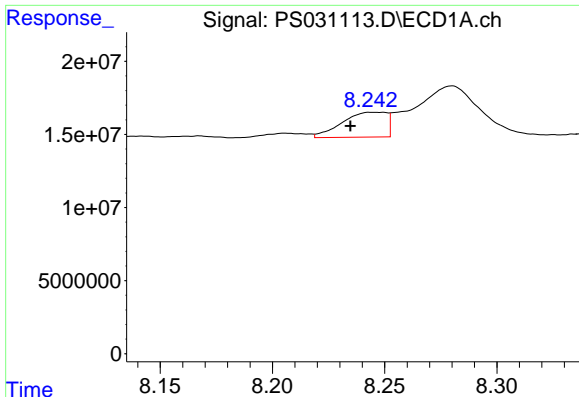
#7 MCPA

R.T.: 7.839 min
 Delta R.T.: -0.014 min
 Response: 15019662
 Conc: 1.38 ug/ml



#7 MCPA

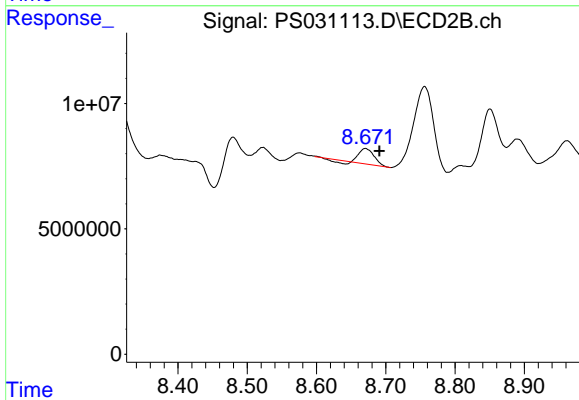
R.T.: 8.307 min
 Delta R.T.: -0.012 min
 Response: 89035571
 Conc: 27.77 ug/ml



#8 DICHLORPROP

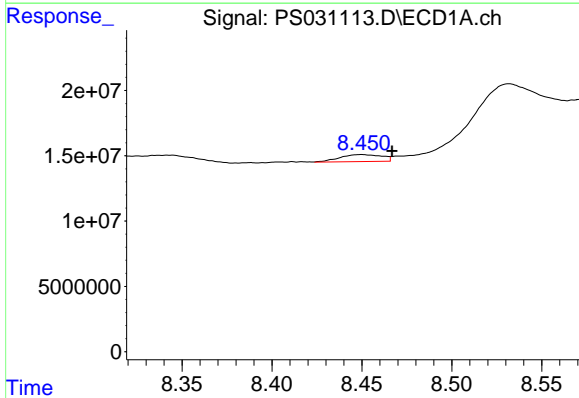
R.T.: 8.244 min
 Delta R.T.: 0.010 min
 Response: 23564958
 Conc: 6.92 ng/ml

Instrument :
 ECD_S
 ClientSampleId :
 PB168847TB



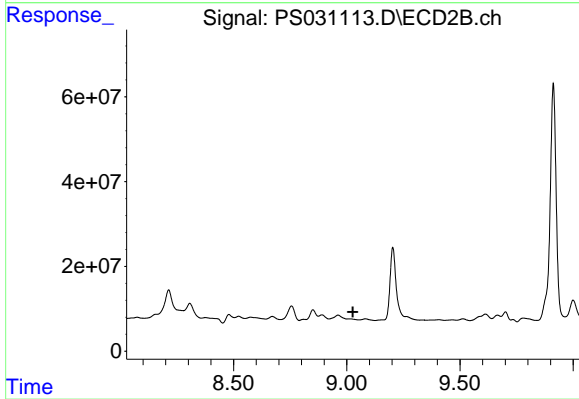
#8 DICHLORPROP

R.T.: 8.671 min
 Delta R.T.: -0.020 min
 Response: 8457018
 Conc: 5.57 ng/ml



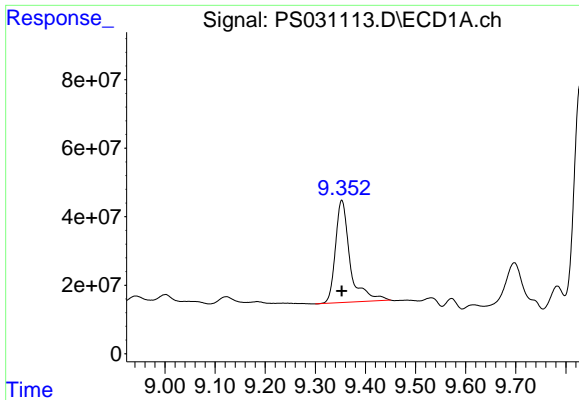
#9 2,4-D

R.T.: 8.450 min
 Delta R.T.: -0.017 min
 Response: 8783157
 Conc: 2.85 ng/ml



#9 2,4-D

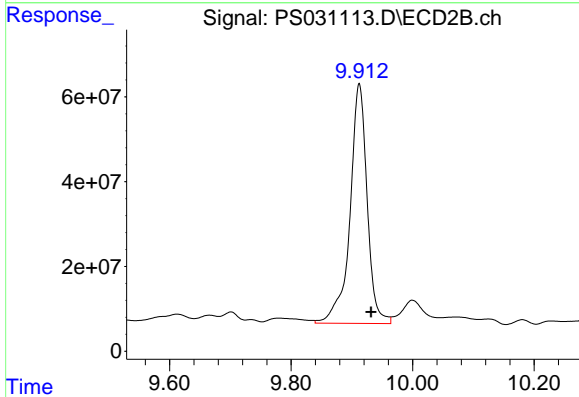
R.T.: 0.000 min
 Exp R.T. : 9.027 min
 Response: 0
 Conc: N.D.



#11 2,4,5-TP (SILVEX)

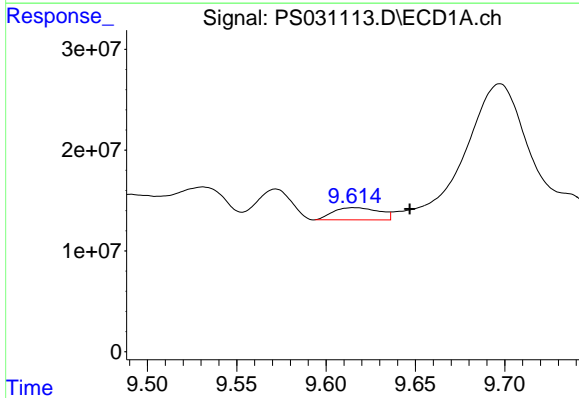
R.T.: 9.353 min
 Delta R.T.: 0.000 min
 Response: 607978518
 Conc: 32.67 ng/ml

Instrument :
 ECD_S
 ClientSampleId :
 PB168847TB



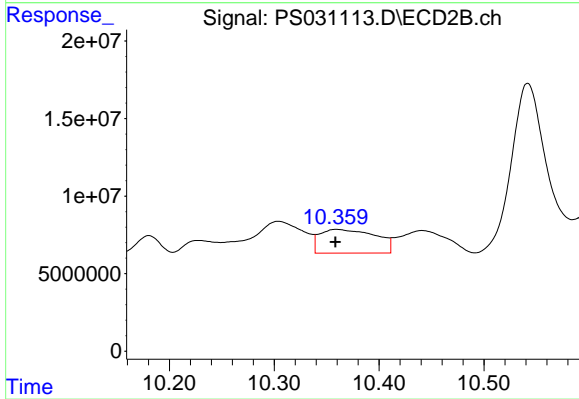
#11 2,4,5-TP (SILVEX)

R.T.: 9.912 min
 Delta R.T.: -0.020 min
 Response: 1112472926
 Conc: 75.80 ng/ml



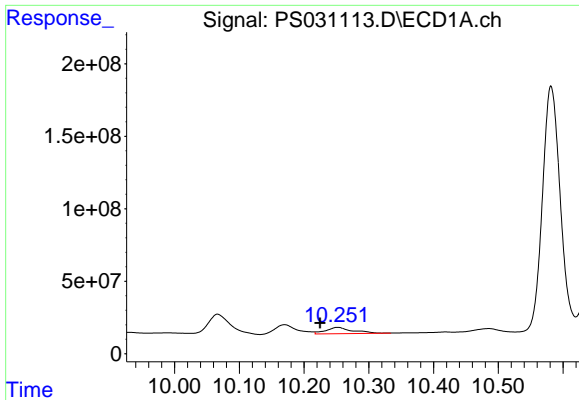
#12 2,4,5-T

R.T.: 9.616 min
 Delta R.T.: -0.031 min
 Response: 21638095
 Conc: 1.42 ng/ml



#12 2,4,5-T

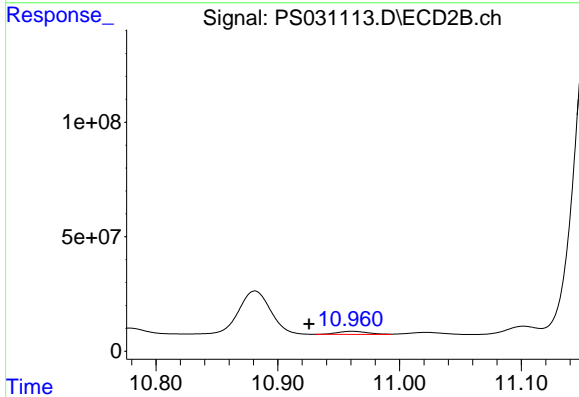
R.T.: 10.359 min
 Delta R.T.: 0.000 min
 Response: 56438577
 Conc: 4.03 ng/ml



#13 2,4-DB

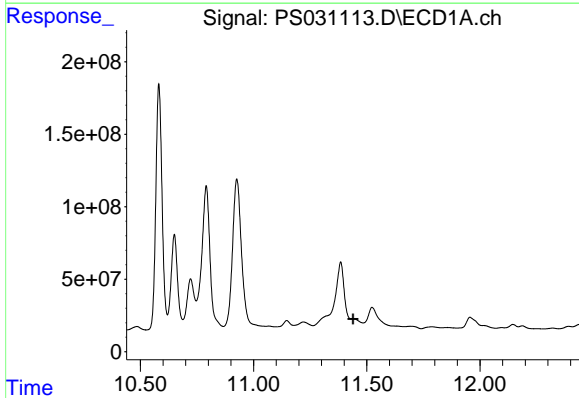
R.T.: 10.252 min
 Delta R.T.: 0.027 min
 Response: 128331179
 Conc: 59.12 ng/ml

Instrument :
 ECD_S
 ClientSampleId :
 PB168847TB



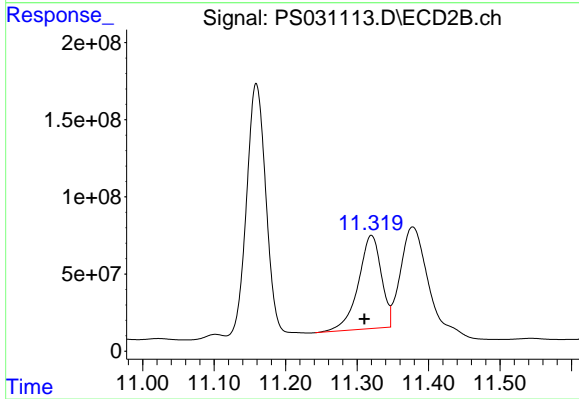
#13 2,4-DB

R.T.: 10.961 min
 Delta R.T.: 0.035 min
 Response: 23802363
 Conc: 20.12 ng/ml



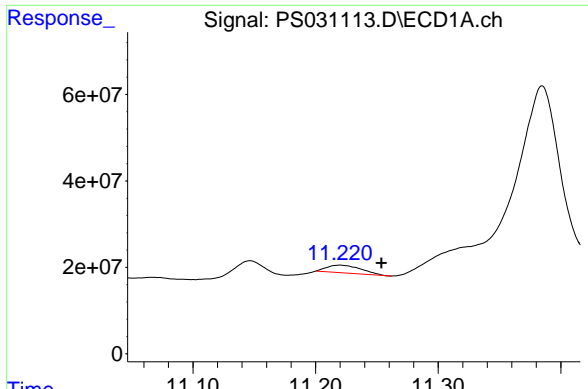
#14 DINOSEB

R.T.: 11.444 min
 Delta R.T.: 0.005 min
 Response: -239541515
 Conc: N.D.



#14 DINOSEB

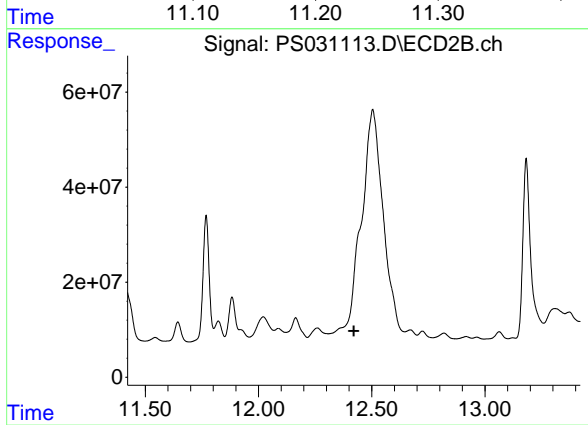
R.T.: 11.320 min
 Delta R.T.: 0.010 min
 Response: 1351882770
 Conc: 119.09 ng/ml



#15 Picloram

R.T.: 11.220 min
Delta R.T.: -0.034 min
Response: 34610558
Conc: 2.38 ng/ml

Instrument :
ECD_S
ClientSampleId :
PB168847TB



#15 Picloram

R.T.: 0.000 min
Exp R.T. : 12.421 min
Response: 0
Conc: N.D.