

Data Path : Z:\pestpcbsrv\HPCHEM1\ECD_S\Data\PS071725\
 Data File : PS031114.D
 Signal(s) : Signal #1: ECD1A.ch Signal #2: ECD2B.ch
 Acq On : 17 Jul 2025 22:50
 Operator : AR\AJ
 Sample : Q2592-02
 Misc :
 ALS Vial : 18 Sample Multiplier: 1

Instrument :
 ECD_S
 ClientSampleId :
 WC-SOIL-20250711

Integration File signal 1: autoint1.e
 Integration File signal 2: autoint2.e
 Quant Time: Jul 18 00:30:28 2025
 Quant Method : Z:\pestpcbsrv\HPCHEM1\ECD_S\Method\PS071125.M
 Quant Title : 8080.M
 QLast Update : Mon Jul 14 05:51:06 2025
 Response via : Initial Calibration
 Integrator: ChemStation

Volume Inj. : 1 µl
 Signal #1 Phase : ZB-MR2 Signal #2 Phase: ZB-MR2
 Signal #1 Info : 30M x 0.32mm x0.5 Signal #2 Info : 30M x 0.32mm x 0.25µm

Compound	RT#1	RT#2	Resp#1	Resp#2	ng/ml	ng/ml

System Monitoring Compounds						
4) S 2,4-DCAA	7.327	7.767	1342.8E6	377.8E6	339.506	364.649
Target Compounds						
1) T Dalapon	2.665f	2.701	1586.1E6	1999.1E6	260.371	703.205 #
2) T 3,5-DICHL...	6.499	6.752f	7192043	18238243	1.373	11.764 #
3) T 4-Nitroph...	7.110	7.320	7800861	5723662	5.778	3.282 #
7) T MCPA	7.820f	8.327	17785027	56345397	1.631	17.577 #
8) T DICHLORPROP	8.239	8.662f	49653777	9758218	14.582	6.423 #
10) T Pentachlo...	8.767	9.549	35424912	26095101	<MDL	<MDL #
11) T 2,4,5-TP ...	9.354	0.000	17948074	0	<MDL	N.D. #
12) T 2,4,5-T	0.000	10.359	0	69365334	N.D.	4.958
13) T 2,4-DB	10.225	10.877f	252.4E6	9452220	116.273	7.989 #
14) T DINOSEB	11.446	11.318	8870187	28355497	<MDL	2.498 #
15) T Picloram	11.240	0.000	16210426	0	1.112	N.D. #
16) T DCPA	11.695f	0.000	45249116	0	1.890	N.D. #

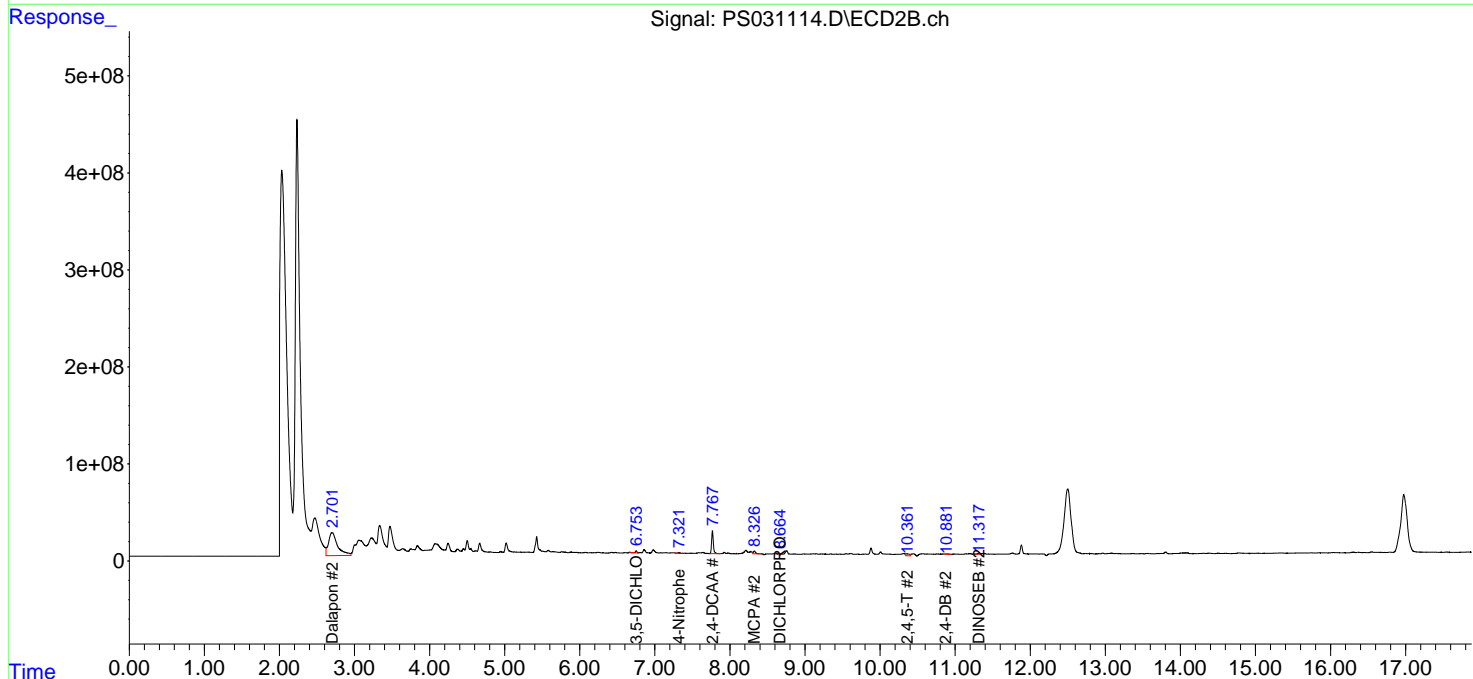
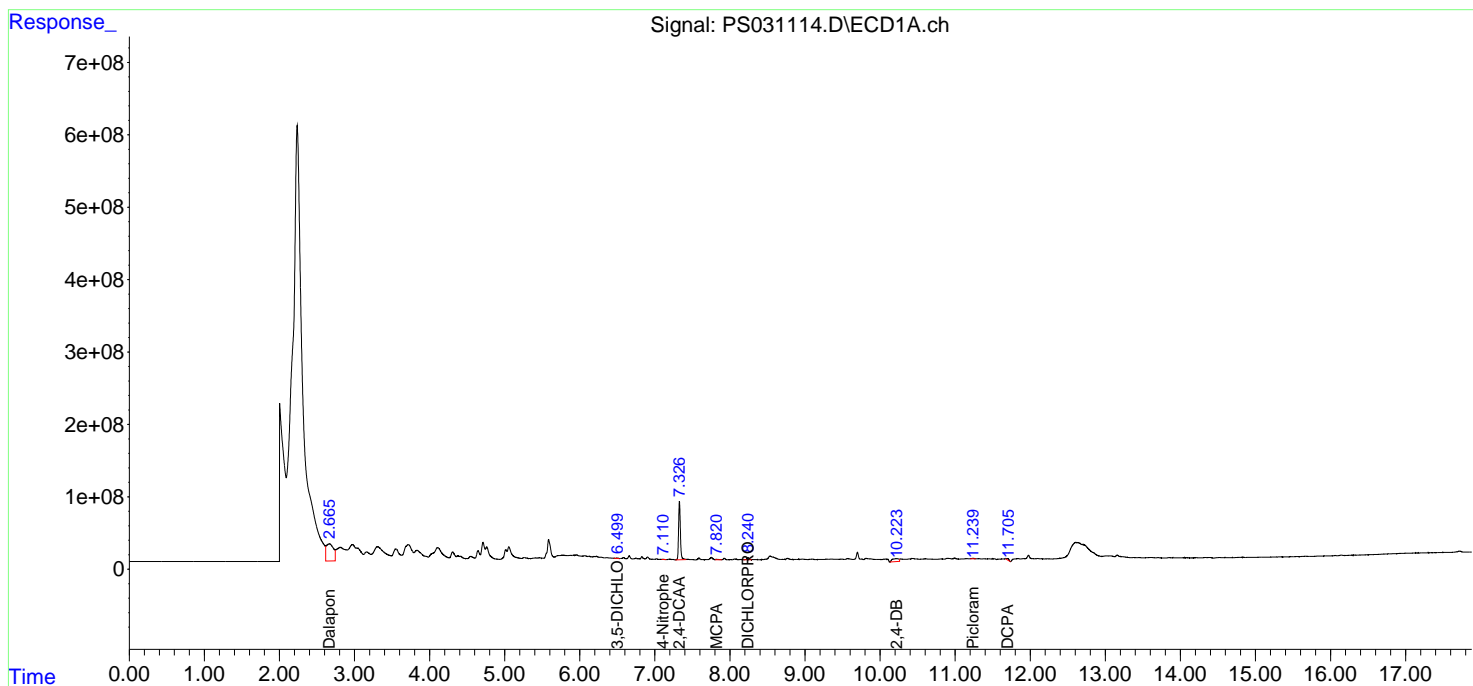
(f)=RT Delta > 1/2 Window (#)=Amounts differ by > 25% (m)=manual int.

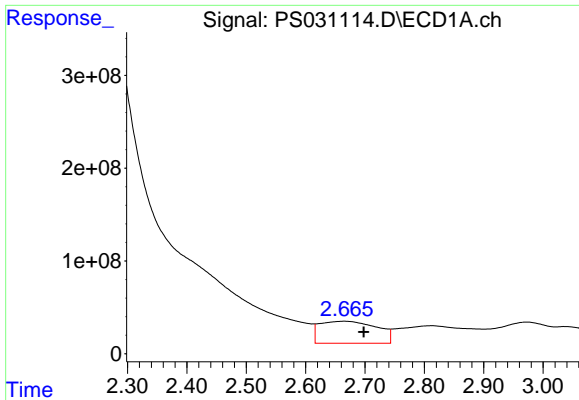
Data Path : Z:\pestpcbsrv\HPCHEM1\ECD_S\Data\PS071725\
 Data File : PS031114.D
 Signal(s) : Signal #1: ECD1A.ch Signal #2: ECD2B.ch
 Acq On : 17 Jul 2025 22:50
 Operator : AR\AJ
 Sample : Q2592-02
 Misc :
 ALS Vial : 18 Sample Multiplier: 1

Instrument :
 ECD_S
 ClientSampleId :
 WC-SOIL-20250711

Integration File signal 1: autoint1.e
 Integration File signal 2: autoint2.e
 Quant Time: Jul 18 00:30:28 2025
 Quant Method : Z:\pestpcbsrv\HPCHEM1\ECD_S\Method\PS071125.M
 Quant Title : 8080.M
 QLast Update : Mon Jul 14 05:51:06 2025
 Response via : Initial Calibration
 Integrator: ChemStation

Volume Inj. : 1 µl
 Signal #1 Phase : ZB-MR1 Signal #2 Phase: ZB-MR2
 Signal #1 Info : 30M x 0.32mm x0.5 Signal #2 Info : 30M x 0.32mm x 0.25µm

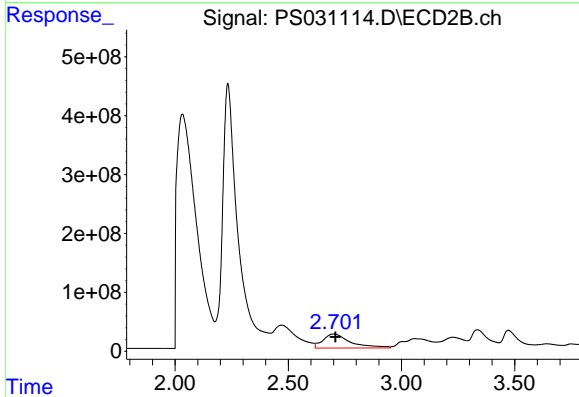




#1 Dalapon

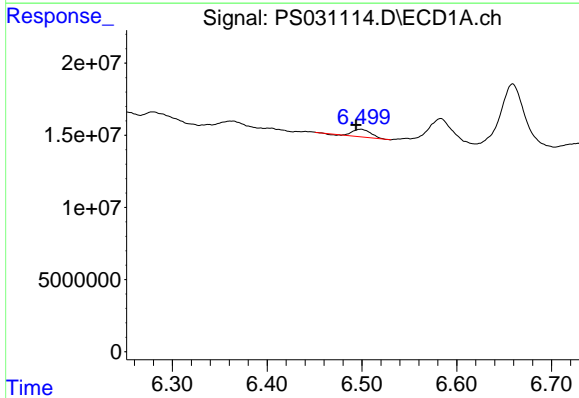
R.T.: 2.665 min
 Delta R.T.: -0.033 min
 Response: 1586107219
 Conc: 260.37 ng/ml

Instrument :
 ECD_S
 ClientSampleId :
 WC-SOIL-20250711



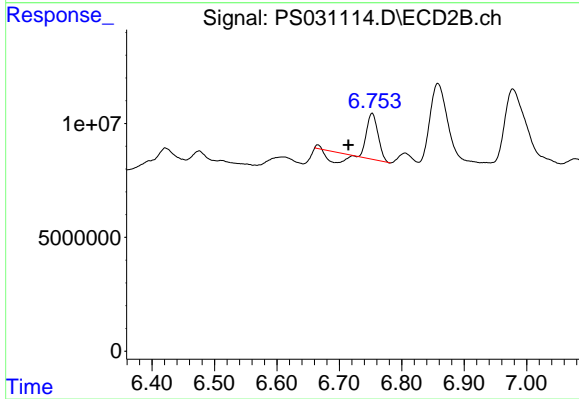
#1 Dalapon

R.T.: 2.701 min
 Delta R.T.: -0.007 min
 Response: 1999113842
 Conc: 703.21 ng/ml



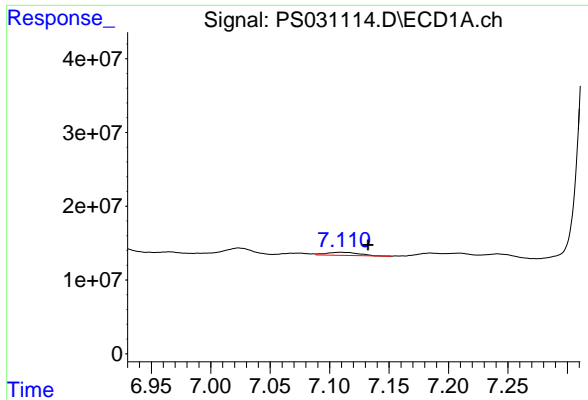
#2 3,5-DICHLOROBENZOIC ACID

R.T.: 6.499 min
 Delta R.T.: 0.005 min
 Response: 7192043
 Conc: 1.37 ng/ml



#2 3,5-DICHLOROBENZOIC ACID

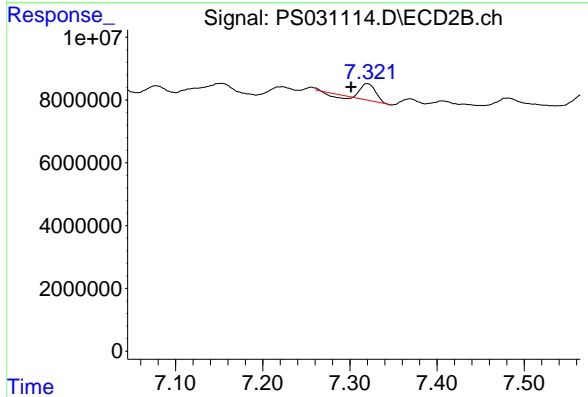
R.T.: 6.752 min
 Delta R.T.: 0.038 min
 Response: 18238243
 Conc: 11.76 ng/ml



#3 4-Nitrophenol

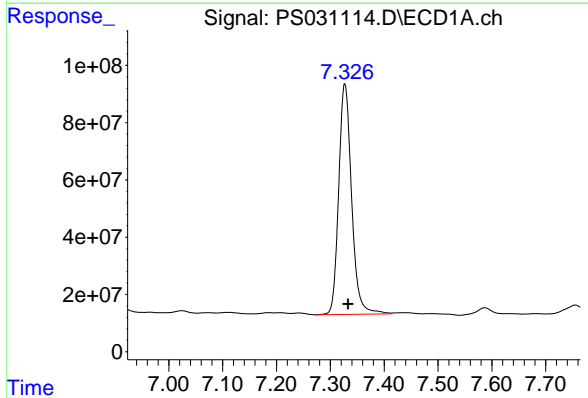
R.T.: 7.110 min
 Delta R.T.: -0.023 min
 Response: 7800861
 Conc: 5.78 ng/ml

Instrument :
 ECD_S
 ClientSampleId :
 WC-SOIL-20250711



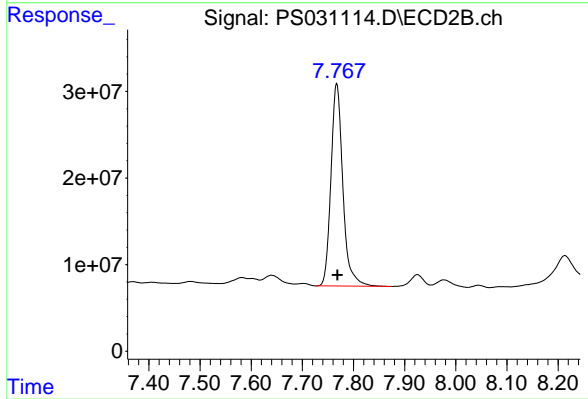
#3 4-Nitrophenol

R.T.: 7.320 min
 Delta R.T.: 0.019 min
 Response: 5723662
 Conc: 3.28 ng/ml



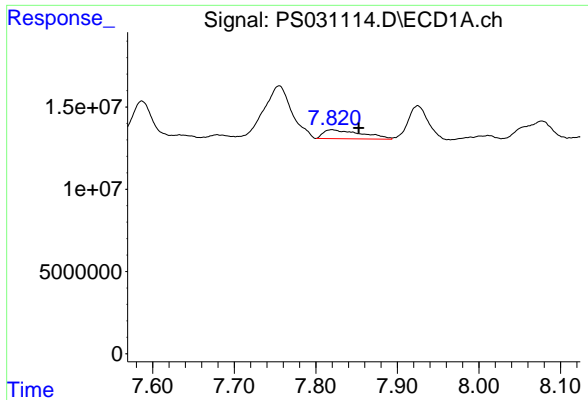
#4 2,4-DCAA

R.T.: 7.327 min
 Delta R.T.: -0.006 min
 Response: 1342773056
 Conc: 339.51 ng/ml



#4 2,4-DCAA

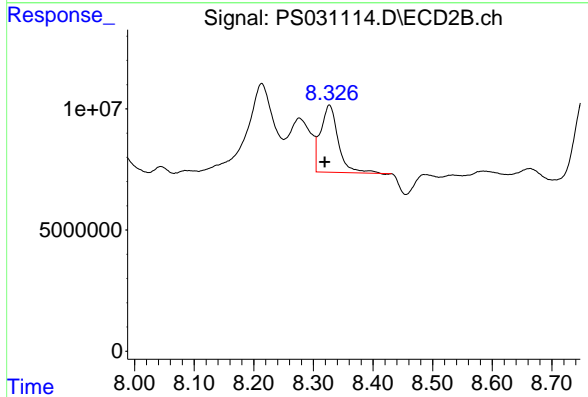
R.T.: 7.767 min
 Delta R.T.: -0.001 min
 Response: 377788177
 Conc: 364.65 ng/ml



#7 MCPA

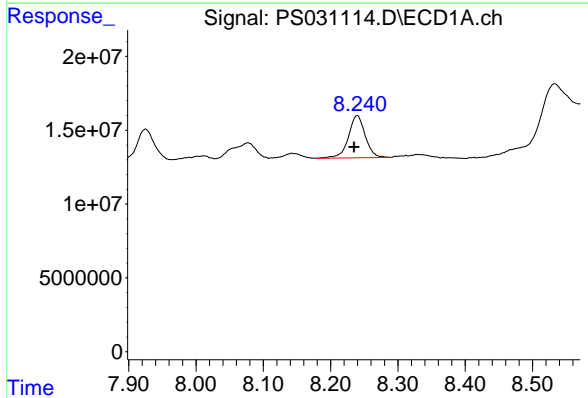
R.T.: 7.820 min
 Delta R.T.: -0.033 min
 Response: 17785027
 Conc: 1.63 ug/ml

Instrument :
 ECD_S
 ClientSampleId :
 WC-SOIL-20250711



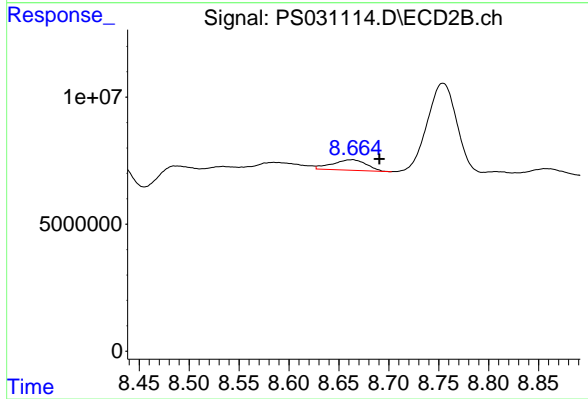
#7 MCPA

R.T.: 8.327 min
 Delta R.T.: 0.008 min
 Response: 56345397
 Conc: 17.58 ug/ml



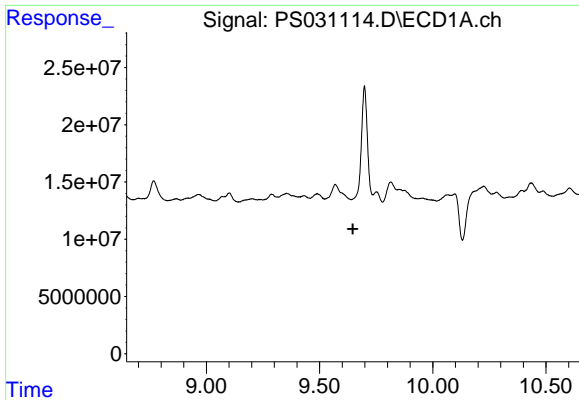
#8 DICHLORPROP

R.T.: 8.239 min
 Delta R.T.: 0.005 min
 Response: 49653777
 Conc: 14.58 ng/ml



#8 DICHLORPROP

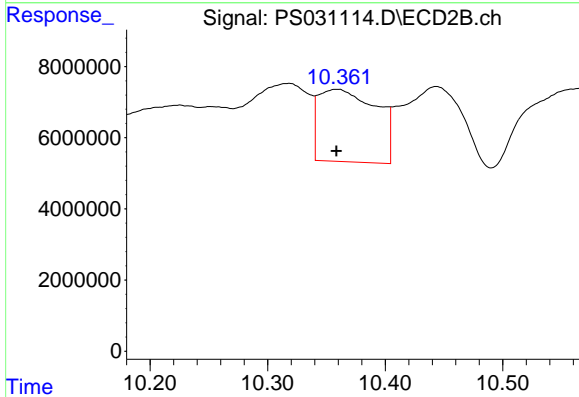
R.T.: 8.662 min
 Delta R.T.: -0.028 min
 Response: 9758218
 Conc: 6.42 ng/ml



#12 2,4,5-T

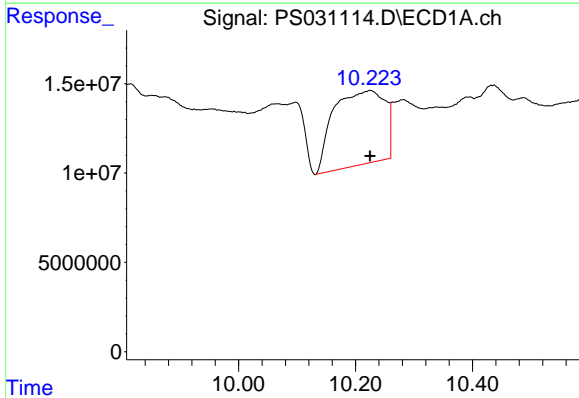
R.T.: 0.000 min
 Exp R.T.: 9.647 min
 Response: 0
 Conc: N.D.

Instrument :
 ECD_S
 ClientSampleId :
 WC-SOIL-20250711



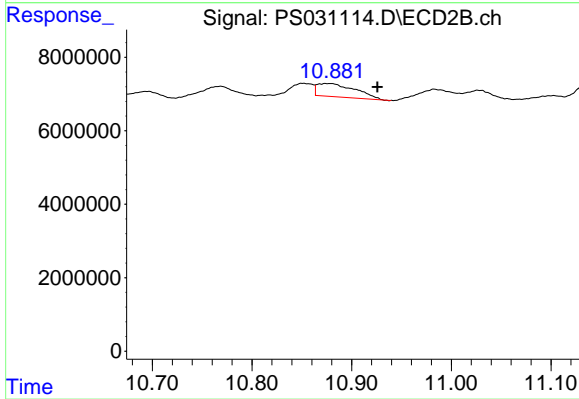
#12 2,4,5-T

R.T.: 10.359 min
 Delta R.T.: 0.000 min
 Response: 69365334
 Conc: 4.96 ng/ml



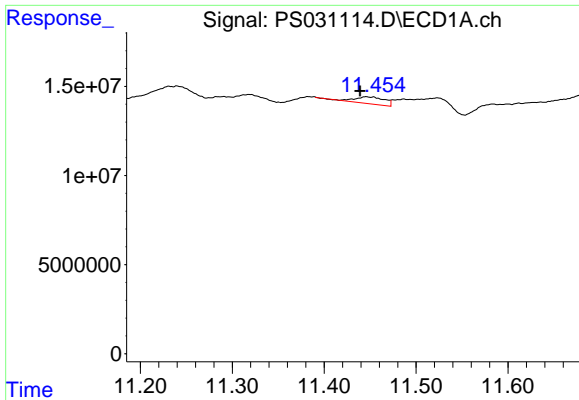
#13 2,4-DB

R.T.: 10.225 min
 Delta R.T.: 0.000 min
 Response: 252404260
 Conc: 116.27 ng/ml



#13 2,4-DB

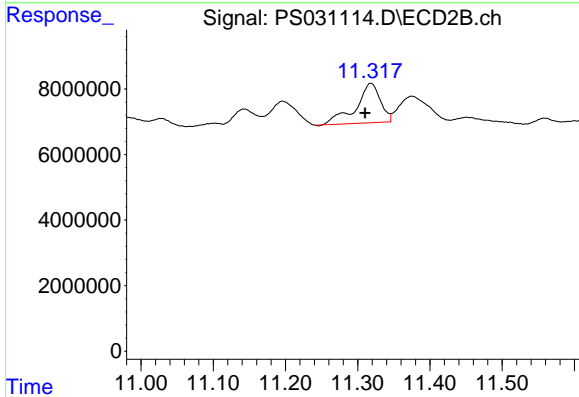
R.T.: 10.877 min
 Delta R.T.: -0.049 min
 Response: 9452220
 Conc: 7.99 ng/ml



#14 DINOSEB

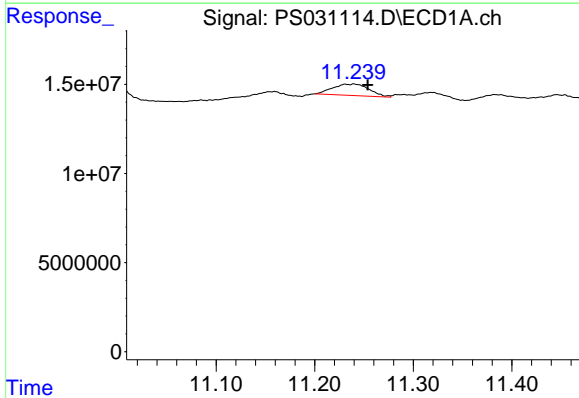
R.T.: 11.446 min
 Delta R.T.: 0.007 min
 Response: 8870187
 Conc: N.D.

Instrument :
 ECD_S
 ClientSampleId :
 WC-SOIL-20250711



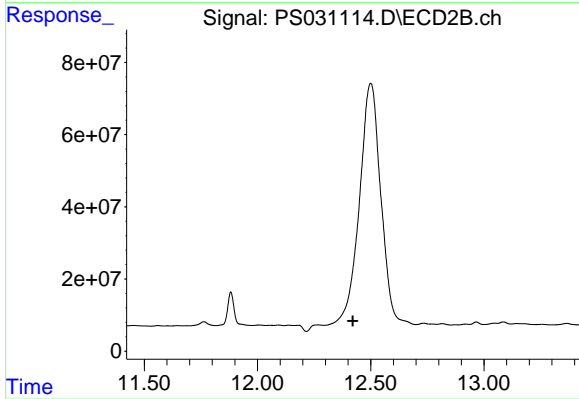
#14 DINOSEB

R.T.: 11.318 min
 Delta R.T.: 0.008 min
 Response: 2835497
 Conc: 2.50 ng/ml



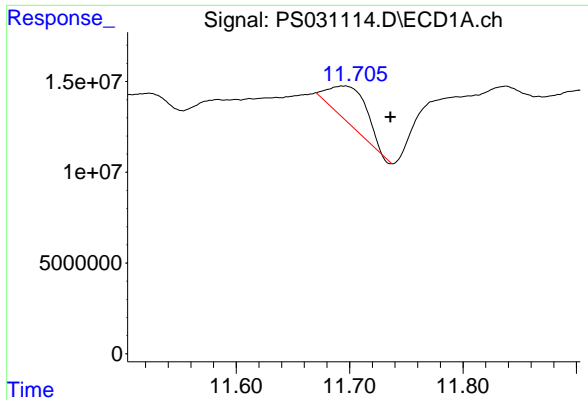
#15 Picloram

R.T.: 11.240 min
 Delta R.T.: -0.014 min
 Response: 16210426
 Conc: 1.11 ng/ml



#15 Picloram

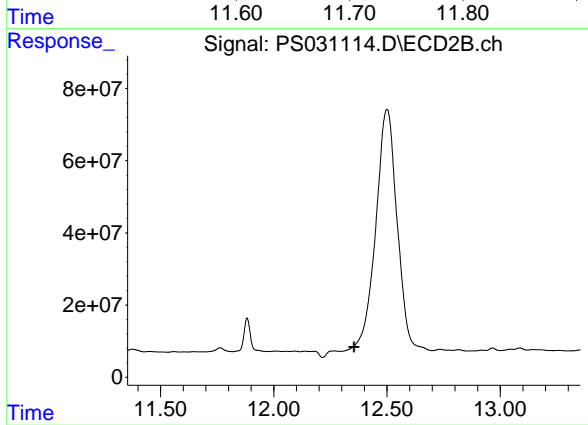
R.T.: 0.000 min
 Exp R.T. : 12.421 min
 Response: 0
 Conc: N.D.



#16 DCPA

R.T.: 11.695 min
 Delta R.T.: -0.041 min
 Response: 45249116
 Conc: 1.89 ng/ml

Instrument :
 ECD_S
 ClientSampleId :
 WC-SOIL-20250711



#16 DCPA

R.T.: 0.000 min
 Exp R.T. : 12.354 min
 Response: 0
 Conc: N.D.