

Data Path : Z:\pestpcbsrv\HPCHEM1\ECD\_S\Data\PS071725\  
 Data File : PS031115.D  
 Signal(s) : Signal #1: ECD1A.ch Signal #2: ECD2B.ch  
 Acq On : 17 Jul 2025 23:14  
 Operator : AR\AJ  
 Sample : Q2592-02MS  
 Misc :  
 ALS Vial : 19 Sample Multiplier: 1

Instrument :  
 ECD\_S  
 ClientSampleId :  
 WC-SOIL-20250711MS

Integration File signal 1: autoint1.e  
 Integration File signal 2: autoint2.e  
 Quant Time: Jul 18 00:30:43 2025  
 Quant Method : Z:\pestpcbsrv\HPCHEM1\ECD\_S\Method\PS071125.M  
 Quant Title : 8080.M  
 QLast Update : Mon Jul 14 05:51:06 2025  
 Response via : Initial Calibration  
 Integrator: ChemStation

Volume Inj. : 1 µl  
 Signal #1 Phase : ZB-MR2 Signal #2 Phase: ZB-MR2  
 Signal #1 Info : 30M x 0.32mm x0.5 Signal #2 Info : 30M x 0.32mm x 0.25µm

Compound	RT#1	RT#2	Resp#1	Resp#2	ng/ml	ng/ml
System Monitoring Compounds						
4) S 2,4-DCAA	7.328	7.767	1808.6E6	469.5E6	457.275	453.205
Target Compounds						
1) T Dalapon	2.689	2.704	4448.8E6	2564.0E6	730.307	901.904
2) T 3,5-DICHL...	6.491	6.714	2704.1E6	654.5E6	516.195	422.159
3) T 4-Nitroph...	7.128	7.306	48075905	39896975	35.612	22.878 #
5) T DICAMBA	7.517	7.969	7135.4E6	2815.7E6	454.749	434.764
6) T MCPP	7.697	8.068	376.9E6	76806058	40.963	35.925
7) T MCPA	7.847	8.316	543.2E6	174.7E6	49.803	54.487
8) T DICHLORPROP	8.229	8.689	1858.0E6	659.3E6	545.648	433.966
9) T 2,4-D	8.460	9.025	2144.6E6	940.0E6	696.659	553.101
10) T Pentachlo...	8.767	9.549	28475.1E6	18089.5E6	566.539	469.431
11) T 2,4,5-TP ...	9.346	9.931	11729.5E6	7959.5E6	630.257	542.358
12) T 2,4,5-T	9.639	10.357	10372.0E6	6667.2E6	681.770	476.508 #
13) T 2,4-DB	10.219	10.925	1677.1E6	537.3E6	772.558	454.115 #
14) T DINOSEB	11.432	11.310	5981.0E6	3948.6E6	453.661	347.849
15) T Picloram	11.243	12.420	9636.3E6	9953.0E6	661.294	423.882 #
16) T DCPA	11.727	12.354	11151.4E6	9240.3E6	465.863	409.732

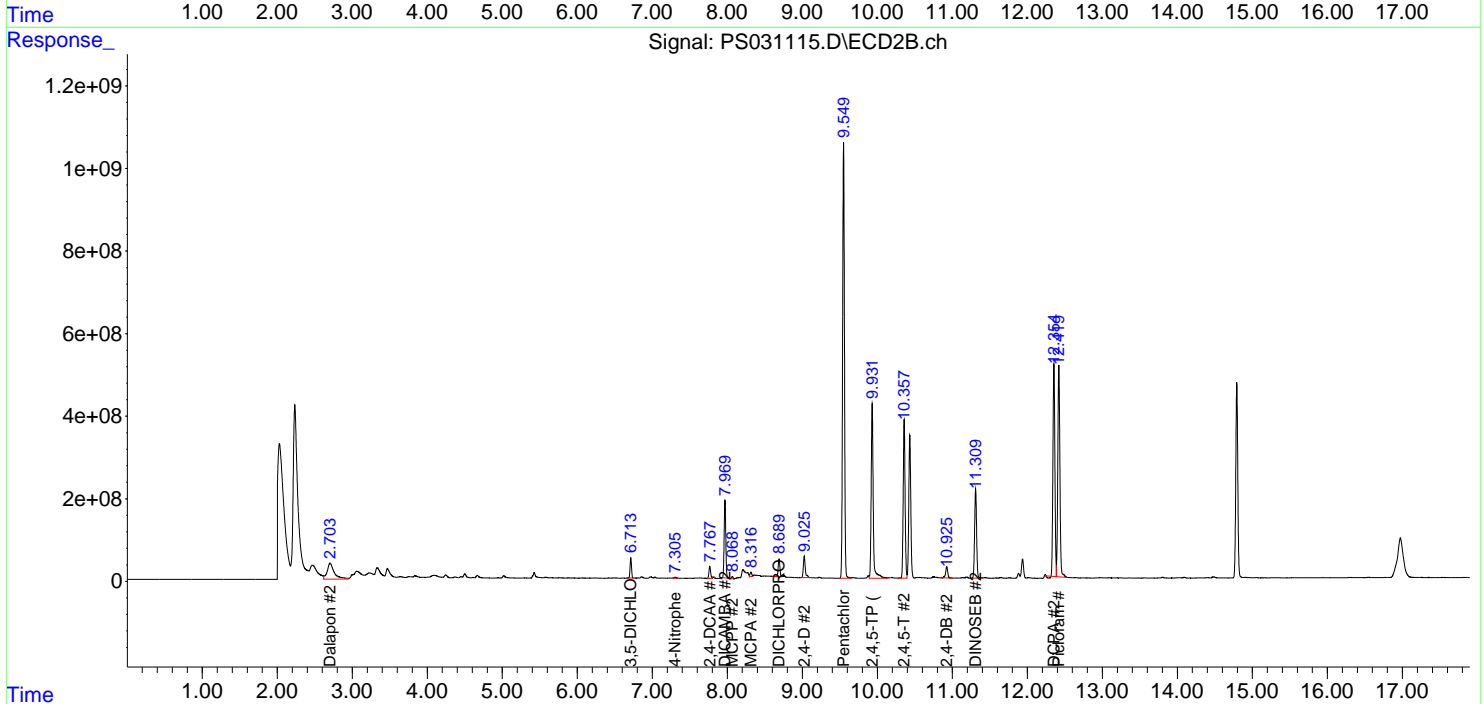
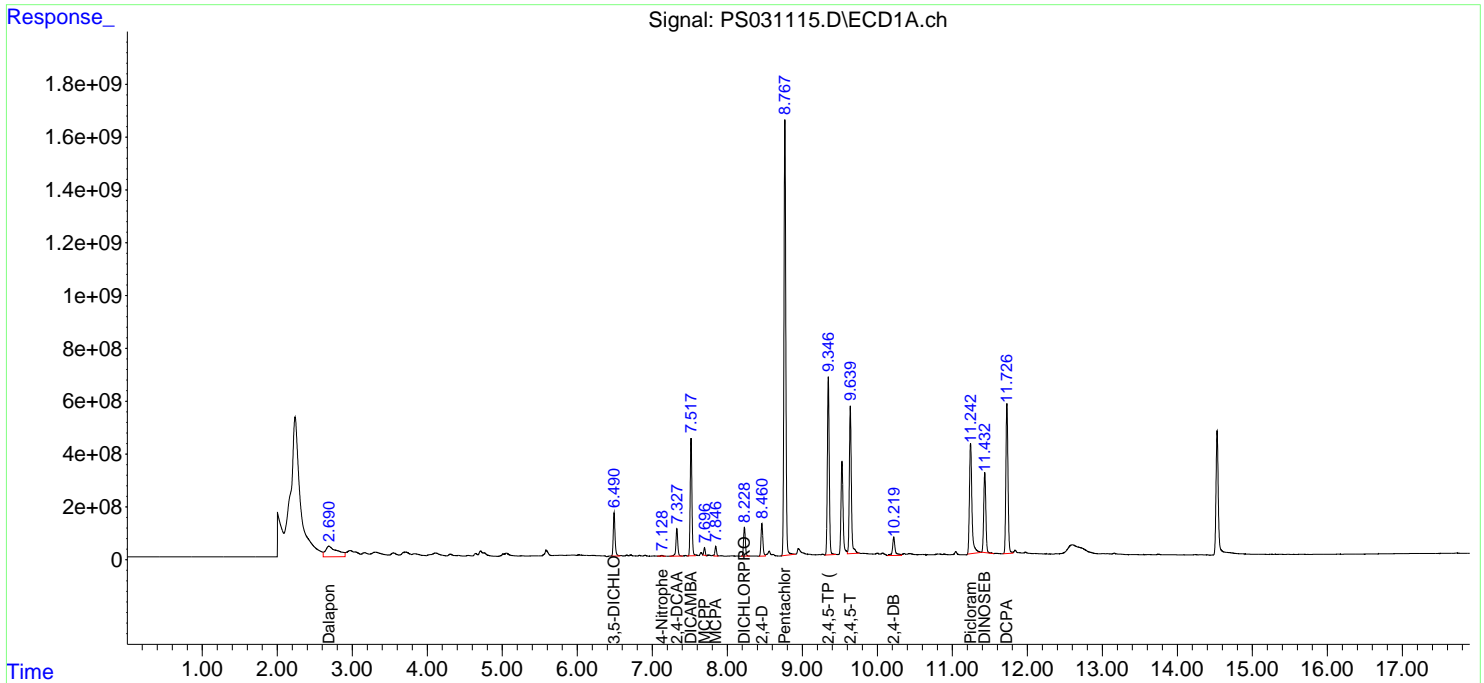
(f)=RT Delta > 1/2 Window (#)=Amounts differ by > 25% (m)=manual int.

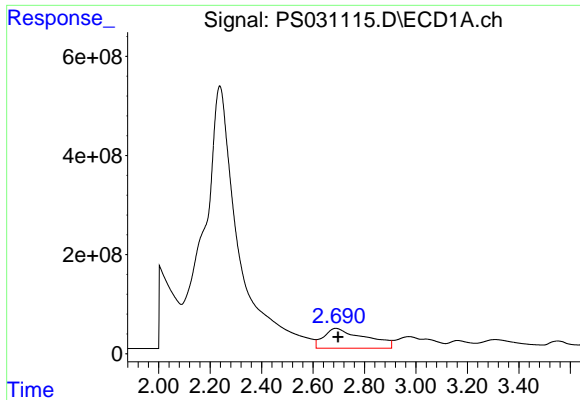
Data Path : Z:\pestpcbsrv\HPCHEM1\ECD\_S\Data\PS071725\  
 Data File : PS031115.D  
 Signal(s) : Signal #1: ECD1A.ch Signal #2: ECD2B.ch  
 Acq On : 17 Jul 2025 23:14  
 Operator : AR\AJ  
 Sample : Q2592-02MS  
 Misc :  
 ALS Vial : 19 Sample Multiplier: 1

Instrument :  
 ECD\_S  
 ClientSampleId :  
 WC-SOIL-20250711MS

Integration File signal 1: autoint1.e  
 Integration File signal 2: autoint2.e  
 Quant Time: Jul 18 00:30:43 2025  
 Quant Method : Z:\pestpcbsrv\HPCHEM1\ECD\_S\Method\PS071125.M  
 Quant Title : 8080.M  
 QLast Update : Mon Jul 14 05:51:06 2025  
 Response via : Initial Calibration  
 Integrator: ChemStation

Volume Inj. : 1 µl  
 Signal #1 Phase : ZB-MR1 Signal #2 Phase: ZB-MR2  
 Signal #1 Info : 30M x 0.32mm x0.5 Signal #2 Info : 30M x 0.32mm x 0.25µm

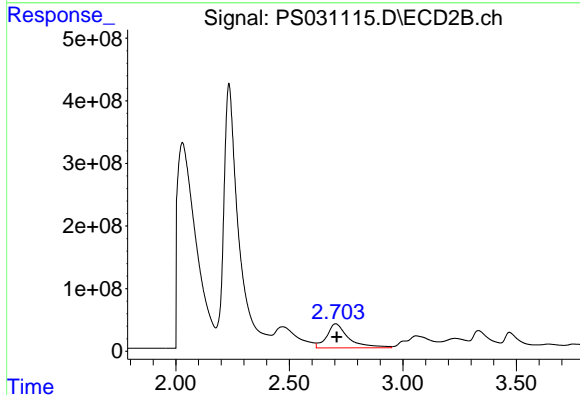




#1 Dalapon

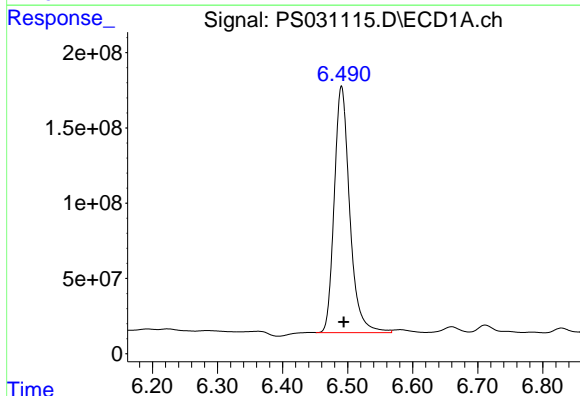
R.T.: 2.689 min  
 Delta R.T.: -0.009 min  
 Response: 4448830388  
 Conc: 730.31 ng/ml

Instrument :  
 ECD\_S  
 ClientSampleId :  
 WC-SOIL-20250711MS



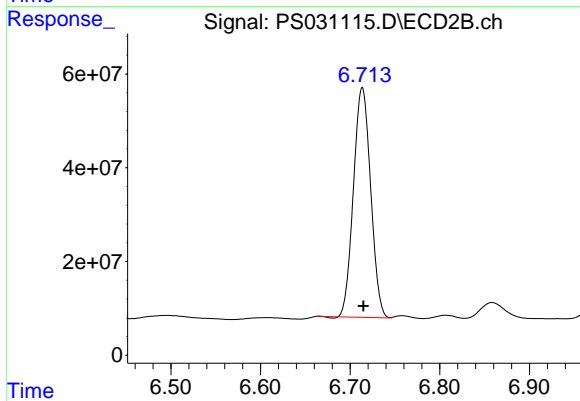
#1 Dalapon

R.T.: 2.704 min  
 Delta R.T.: -0.005 min  
 Response: 2563985656  
 Conc: 901.90 ng/ml



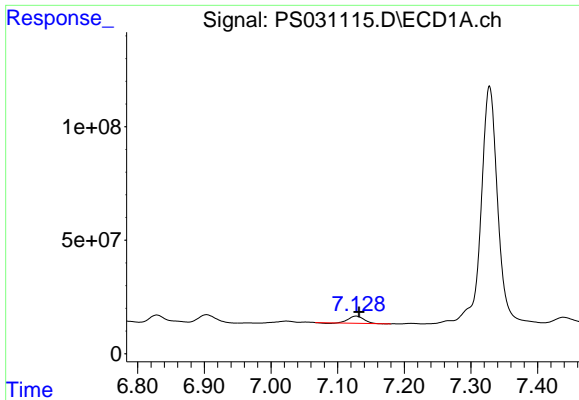
#2 3,5-DICHLOROBENZOIC ACID

R.T.: 6.491 min  
 Delta R.T.: -0.003 min  
 Response: 2704139160  
 Conc: 516.19 ng/ml



#2 3,5-DICHLOROBENZOIC ACID

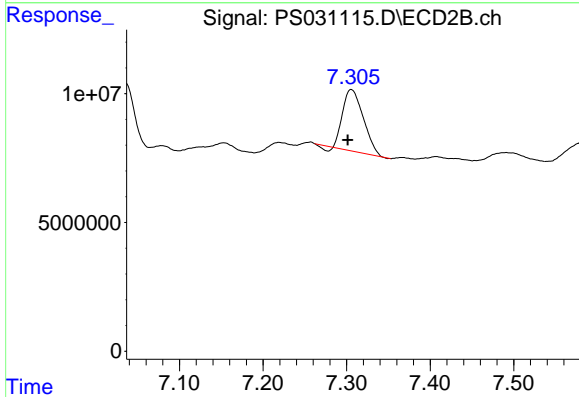
R.T.: 6.714 min  
 Delta R.T.: -0.001 min  
 Response: 654488635  
 Conc: 422.16 ng/ml



#3 4-Nitrophenol

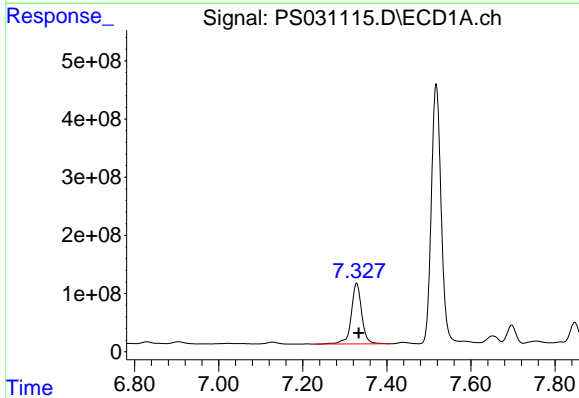
R.T.: 7.128 min  
 Delta R.T.: -0.005 min  
 Response: 48075905  
 Conc: 35.61 ng/ml

Instrument :  
 ECD\_S  
 ClientSampleId :  
 WC-SOIL-20250711MS



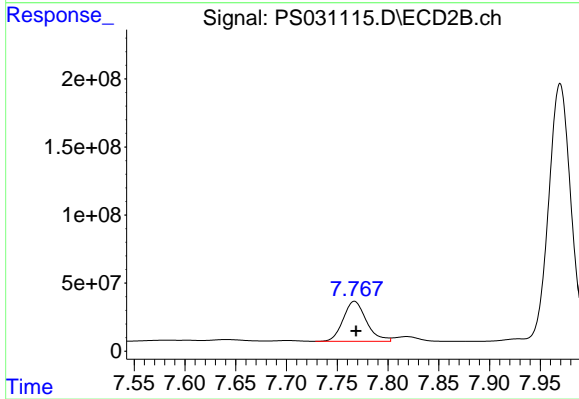
#3 4-Nitrophenol

R.T.: 7.306 min  
 Delta R.T.: 0.005 min  
 Response: 39896975  
 Conc: 22.88 ng/ml



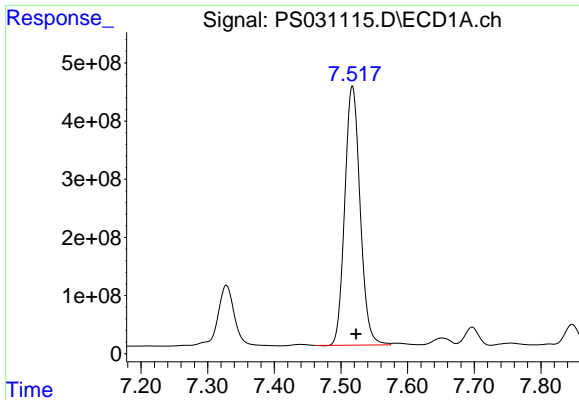
#4 2,4-DCAA

R.T.: 7.328 min  
 Delta R.T.: -0.005 min  
 Response: 1808556728  
 Conc: 457.27 ng/ml



#4 2,4-DCAA

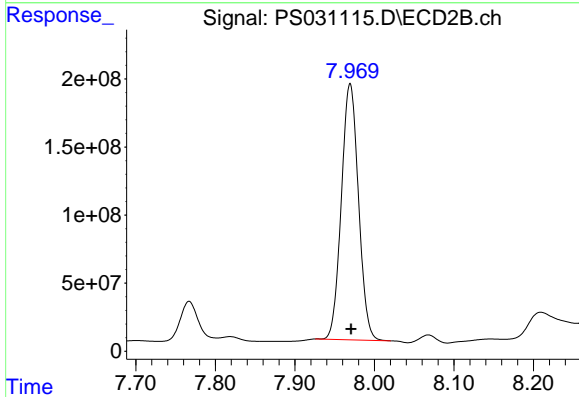
R.T.: 7.767 min  
 Delta R.T.: -0.002 min  
 Response: 469535043  
 Conc: 453.20 ng/ml



#5 DICAMBA

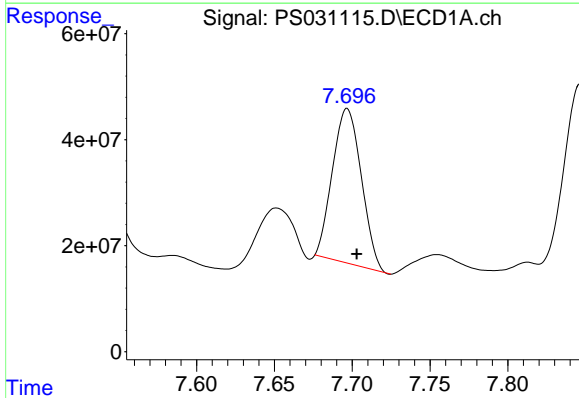
R.T.: 7.517 min  
 Delta R.T.: -0.005 min  
 Response: 7135426800  
 Conc: 454.75 ng/ml

Instrument :  
 ECD\_S  
 ClientSampleId :  
 WC-SOIL-20250711MS



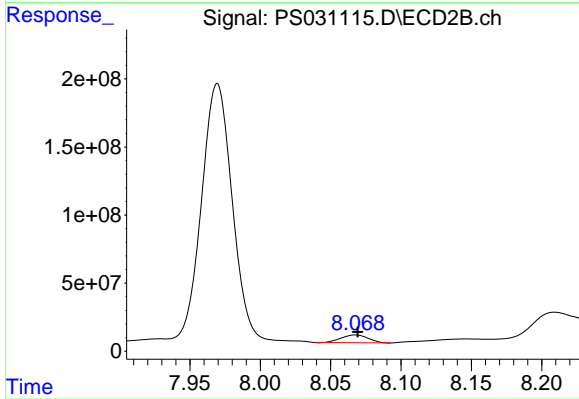
#5 DICAMBA

R.T.: 7.969 min  
 Delta R.T.: -0.001 min  
 Response: 2815715382  
 Conc: 434.76 ng/ml



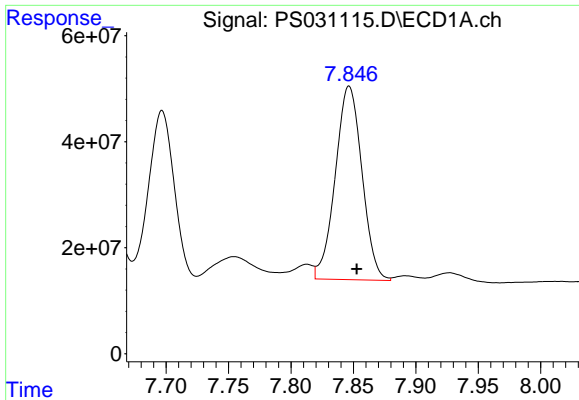
#6 MCP

R.T.: 7.697 min  
 Delta R.T.: -0.006 min  
 Response: 376912595  
 Conc: 40.96 ug/ml



#6 MCP

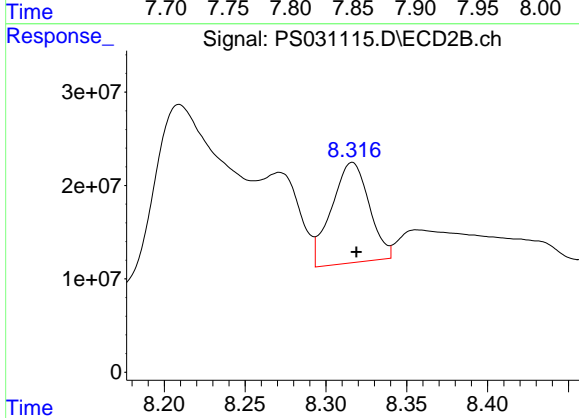
R.T.: 8.068 min  
 Delta R.T.: -0.002 min  
 Response: 76806058  
 Conc: 35.93 ug/ml



#7 MCPA

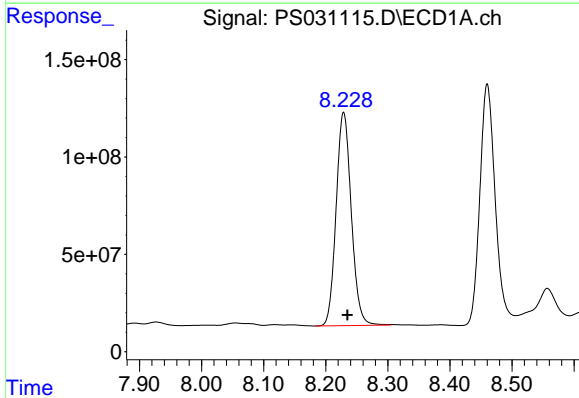
R.T.: 7.847 min  
 Delta R.T.: -0.006 min  
 Response: 543190346  
 Conc: 49.80 ug/ml

Instrument :  
 ECD\_S  
 ClientSampleId :  
 WC-SOIL-20250711MS



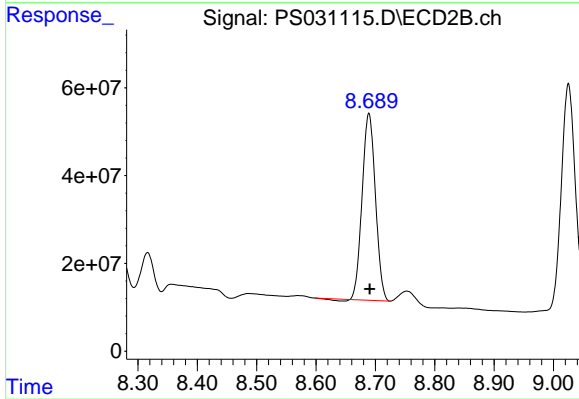
#7 MCPA

R.T.: 8.316 min  
 Delta R.T.: -0.003 min  
 Response: 174667746  
 Conc: 54.49 ug/ml



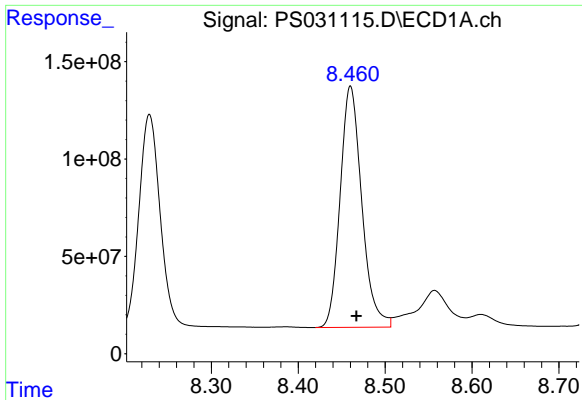
#8 DICHLORPROP

R.T.: 8.229 min  
 Delta R.T.: -0.006 min  
 Response: 1858015894  
 Conc: 545.65 ng/ml



#8 DICHLORPROP

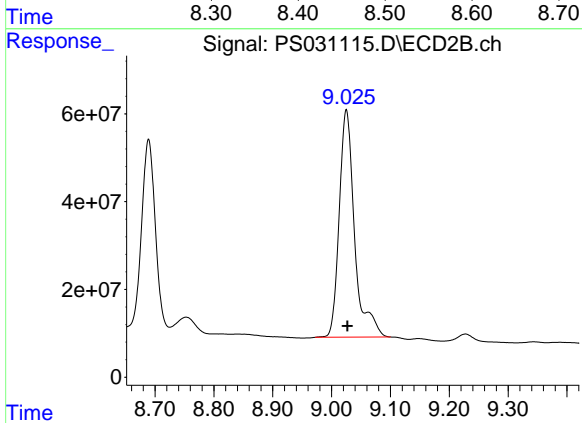
R.T.: 8.689 min  
 Delta R.T.: -0.001 min  
 Response: 659308014  
 Conc: 433.97 ng/ml



#9 2,4-D

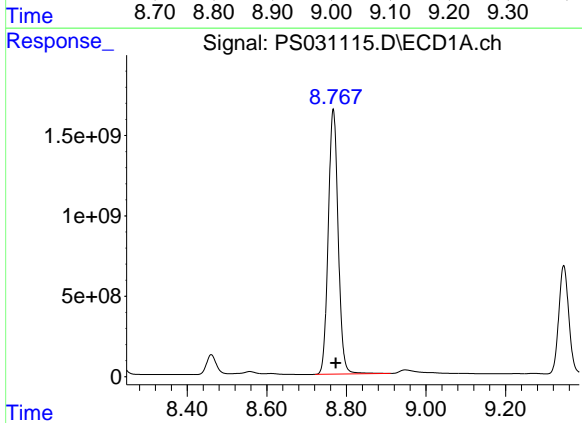
R.T.: 8.460 min  
 Delta R.T.: -0.007 min  
 Response: 2144619867  
 Conc: 696.66 ng/ml

Instrument :  
 ECD\_S  
 ClientSampleId :  
 WC-SOIL-20250711MS



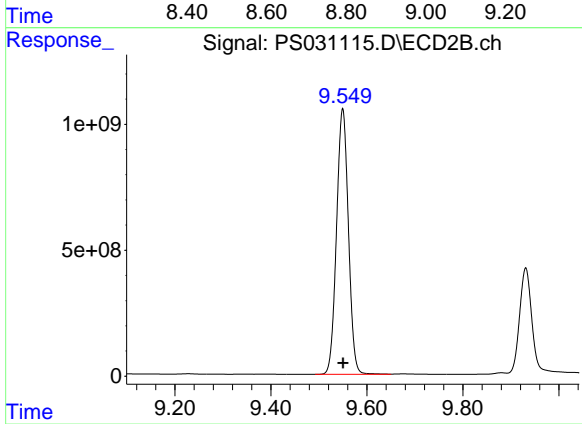
#9 2,4-D

R.T.: 9.025 min  
 Delta R.T.: -0.002 min  
 Response: 939975811  
 Conc: 553.10 ng/ml



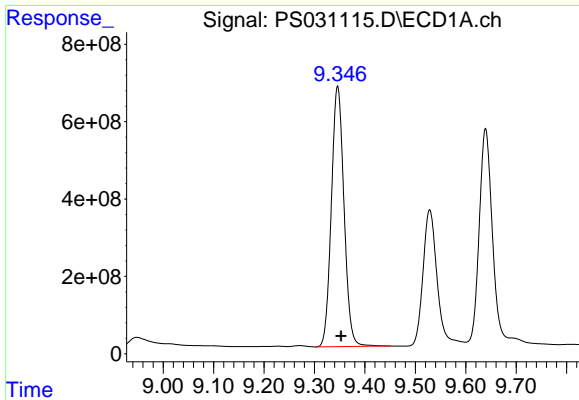
#10 Pentachlorophenol

R.T.: 8.767 min  
 Delta R.T.: -0.006 min  
 Response: 28475126208  
 Conc: 566.54 ng/ml



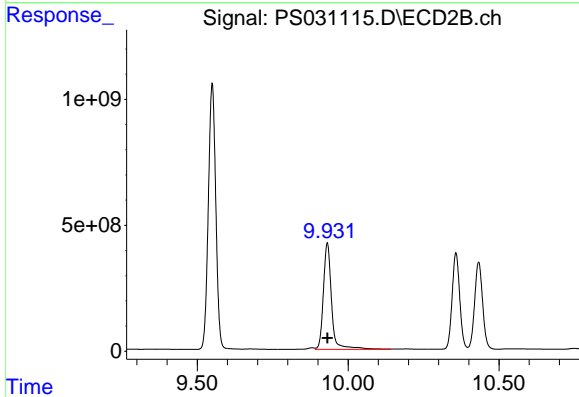
#10 Pentachlorophenol

R.T.: 9.549 min  
 Delta R.T.: 0.000 min  
 Response: 18089543011  
 Conc: 469.43 ng/ml

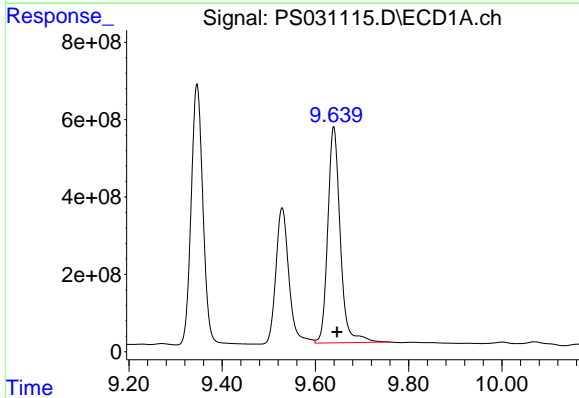


#11 2,4,5-TP (SILVEX)  
 R.T.: 9.346 min  
 Delta R.T.: -0.007 min  
 Response: 11729545061  
 Conc: 630.26 ng/ml

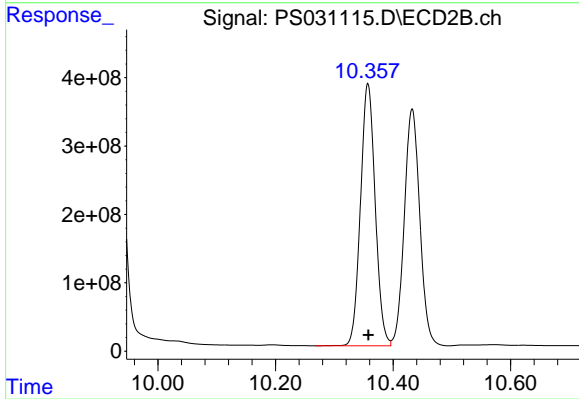
Instrument :  
 ECD\_S  
 ClientSampleId :  
 WC-SOIL-20250711MS



#11 2,4,5-TP (SILVEX)  
 R.T.: 9.931 min  
 Delta R.T.: 0.000 min  
 Response: 7959518340  
 Conc: 542.36 ng/ml

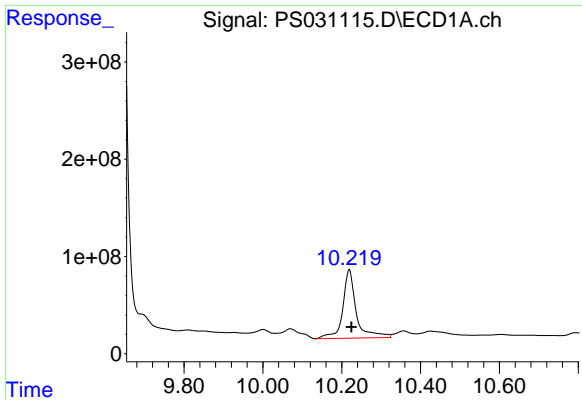


#12 2,4,5-T  
 R.T.: 9.639 min  
 Delta R.T.: -0.008 min  
 Response: 10371987144  
 Conc: 681.77 ng/ml



#12 2,4,5-T  
 R.T.: 10.357 min  
 Delta R.T.: -0.001 min  
 Response: 6667216477  
 Conc: 476.51 ng/ml

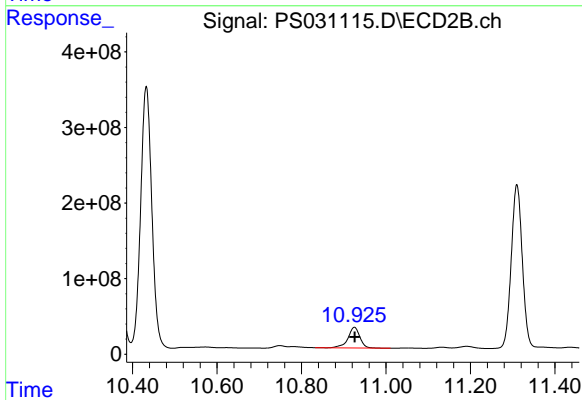




#13 2,4-DB

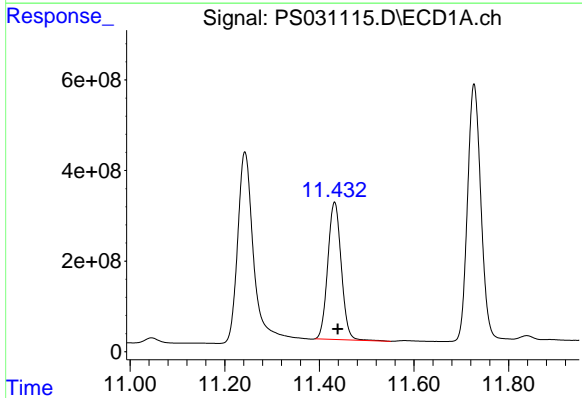
R.T.: 10.219 min  
 Delta R.T.: -0.006 min  
 Response: 1677060624  
 Conc: 772.56 ng/ml

Instrument :  
 ECD\_S  
 ClientSampleId :  
 WC-SOIL-20250711MS



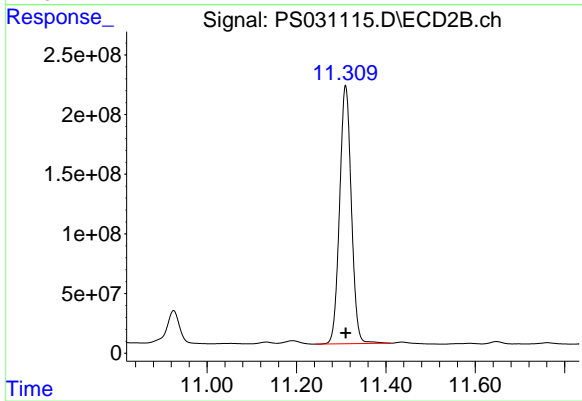
#13 2,4-DB

R.T.: 10.925 min  
 Delta R.T.: 0.000 min  
 Response: 537300870  
 Conc: 454.12 ng/ml



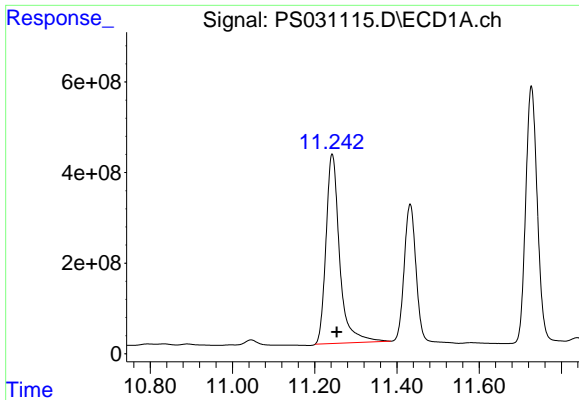
#14 DINOSEB

R.T.: 11.432 min  
 Delta R.T.: -0.007 min  
 Response: 5981028661  
 Conc: 453.66 ng/ml



#14 DINOSEB

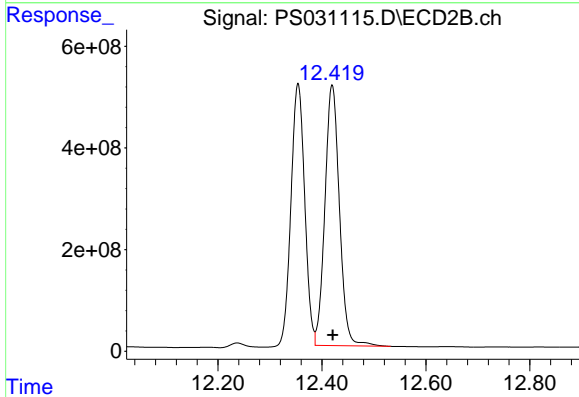
R.T.: 11.310 min  
 Delta R.T.: 0.000 min  
 Response: 3948613443  
 Conc: 347.85 ng/ml



#15 Picloram

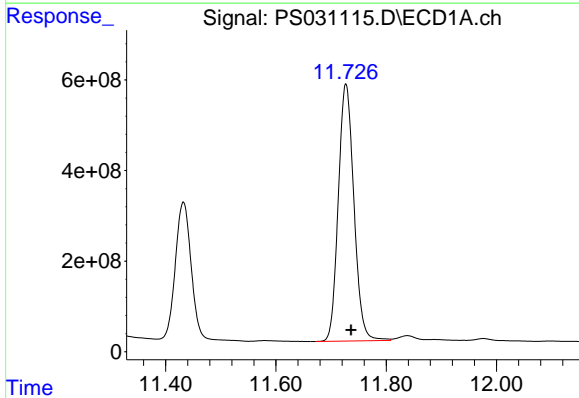
R.T.: 11.243 min  
 Delta R.T.: -0.011 min  
 Response: 9636349209  
 Conc: 661.29 ng/ml

Instrument :  
 ECD\_S  
 ClientSampleId :  
 WC-SOIL-20250711MS



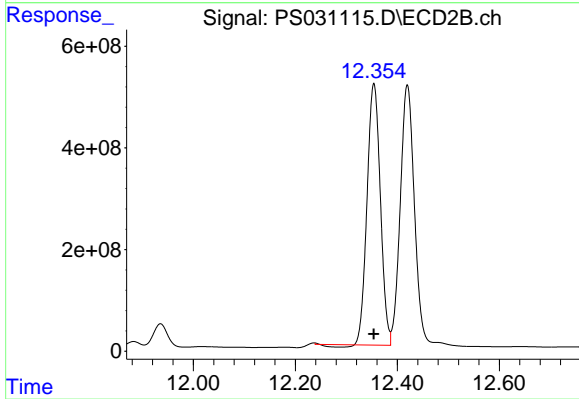
#15 Picloram

R.T.: 12.420 min  
 Delta R.T.: -0.001 min  
 Response: 9953025035  
 Conc: 423.88 ng/ml



#16 DCPA

R.T.: 11.727 min  
 Delta R.T.: -0.009 min  
 Response: 11151437369  
 Conc: 465.86 ng/ml



#16 DCPA

R.T.: 12.354 min  
 Delta R.T.: 0.000 min  
 Response: 9240271043  
 Conc: 409.73 ng/ml