

Data Path : Z:\pestpcbsrv\HPCHEM1\ECD_S\Data\PS071725\
 Data File : PS031120.D
 Signal(s) : Signal #1: ECD1A.ch Signal #2: ECD2B.ch
 Acq On : 18 Jul 2025 01:14
 Operator : AR\AJ
 Sample : Q2605-04
 Misc :
 ALS Vial : 24 Sample Multiplier: 1

Instrument :
 ECD_S
 ClientSampleId :
 V897

Integration File signal 1: autoint1.e
 Integration File signal 2: autoint2.e
 Quant Time: Jul 18 02:01:08 2025
 Quant Method : Z:\pestpcbsrv\HPCHEM1\ECD_S\Method\PS071125.M
 Quant Title : 8080.M
 QLast Update : Mon Jul 14 05:51:06 2025
 Response via : Initial Calibration
 Integrator: ChemStation

Volume Inj. : 1 µl
 Signal #1 Phase : ZB-MR2 Signal #2 Phase: ZB-MR2
 Signal #1 Info : 30M x 0.32mm x0.5 Signal #2 Info : 30M x 0.32mm x 0.25µm

Compound	RT#1	RT#2	Resp#1	Resp#2	ng/ml	ng/ml

System Monitoring Compounds						
4) S 2,4-DCAA	7.327	7.768	1283.1E6	364.0E6	324.412	351.343
Target Compounds						
1) T Dalapon	2.664f	2.706	1652.5E6	2222.3E6	271.271	781.723 #
2) T 3,5-DICHL...	6.498	6.752f	9414684	15693531	1.797	10.123 #
3) T 4-Nitroph...	7.114	7.321	15673319	4641517	11.610	2.662 #
5) T DICAMBA	7.486f	7.981	4543098	2138504	<MDL	<MDL #
7) T MCPA	7.849	8.329	25491068	97248814	2.337	30.337 #
8) T DICHLORPROP	8.240	8.665f	57712749	7091910	16.949	4.668 #
10) T Pentachlo...	8.759	0.000	6250195	0	<MDL	N.D. #
11) T 2,4,5-TP ...	9.360	0.000	14839129	0	<MDL	N.D. #
12) T 2,4,5-T	9.645	10.323f	386278	127.2E6	<MDL	9.090 #
13) T 2,4-DB	10.226	10.882f	135.7E6	11923643	62.523	10.078 #
14) T DINOSEB	11.443	11.317	18094187	25854396	1.372	2.278 #
15) T Picloram	11.247	12.428	60692577	106.9E6	4.165	4.554
16) T DCPA	11.696f	12.325f	43936135	50232457	1.835	2.227

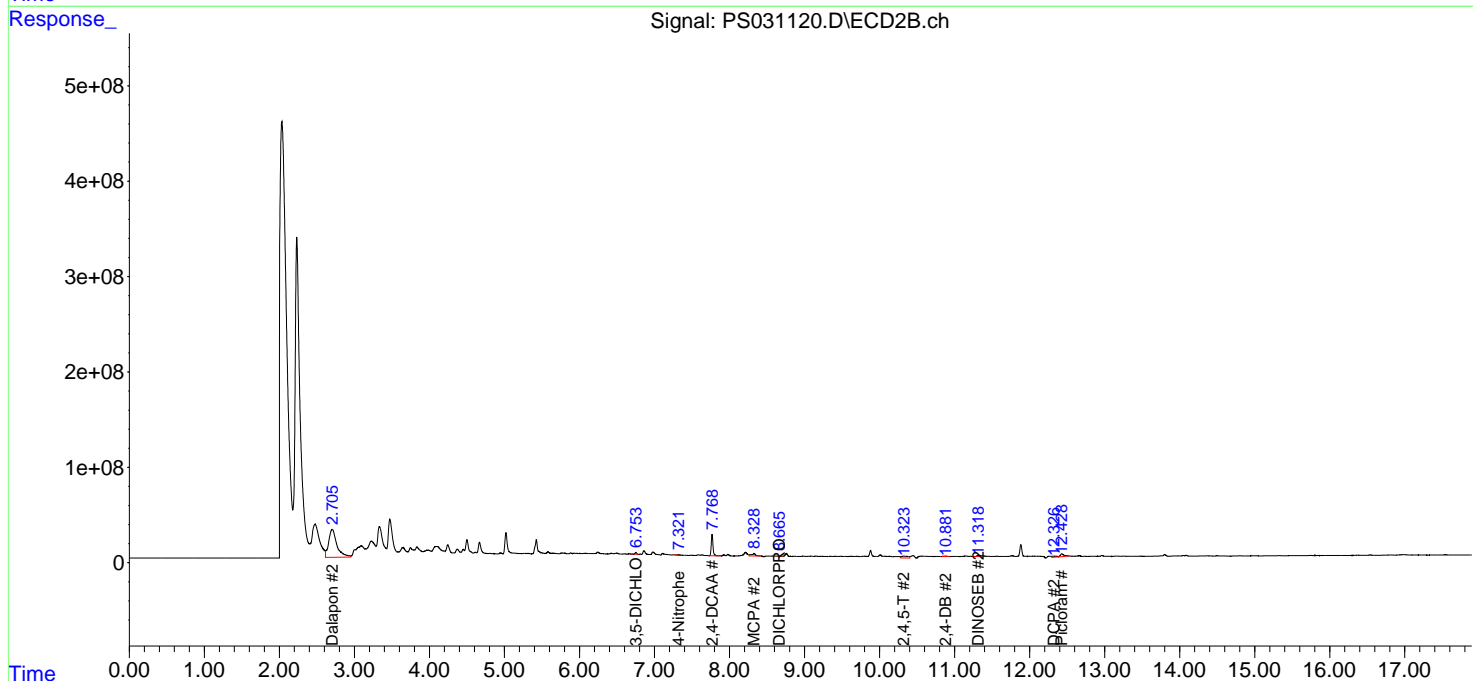
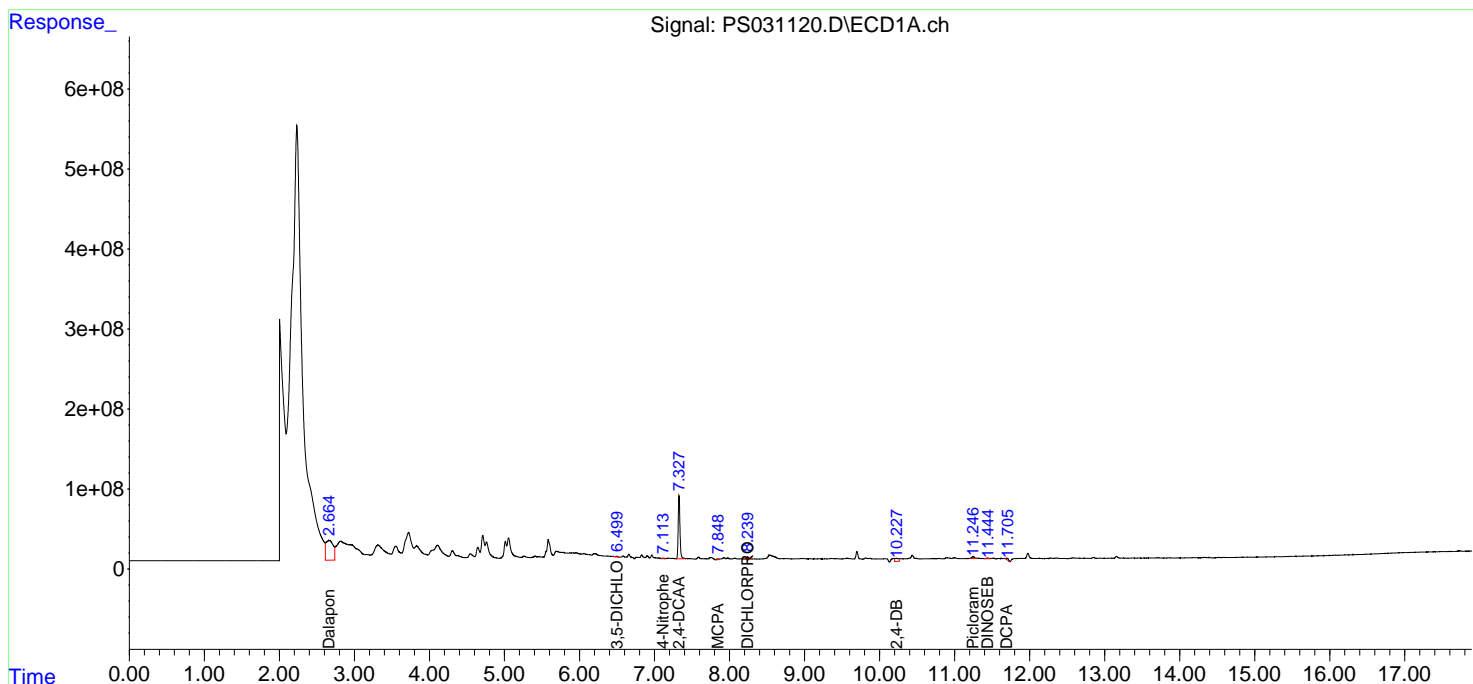
(f)=RT Delta > 1/2 Window (#)=Amounts differ by > 25% (m)=manual int.

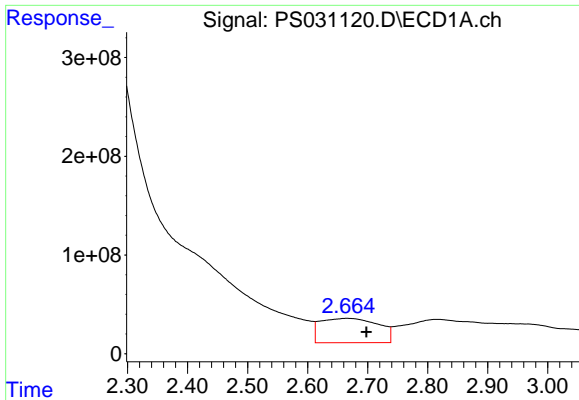
Data Path : Z:\pestpcbsrv\HPCHEM1\ECD_S\Data\PS071725\
 Data File : PS031120.D
 Signal(s) : Signal #1: ECD1A.ch Signal #2: ECD2B.ch
 Acq On : 18 Jul 2025 01:14
 Operator : AR\AJ
 Sample : Q2605-04
 Misc :
 ALS Vial : 24 Sample Multiplier: 1

Instrument :
 ECD_S
 ClientSampleId :
 V897

Integration File signal 1: autoint1.e
 Integration File signal 2: autoint2.e
 Quant Time: Jul 18 02:01:08 2025
 Quant Method : Z:\pestpcbsrv\HPCHEM1\ECD_S\Method\PS071125.M
 Quant Title : 8080.M
 QLast Update : Mon Jul 14 05:51:06 2025
 Response via : Initial Calibration
 Integrator: ChemStation

Volume Inj. : 1 µl
 Signal #1 Phase : ZB-MR1 Signal #2 Phase: ZB-MR2
 Signal #1 Info : 30M x 0.32mm x0.5 Signal #2 Info : 30M x 0.32mm x 0.25µm

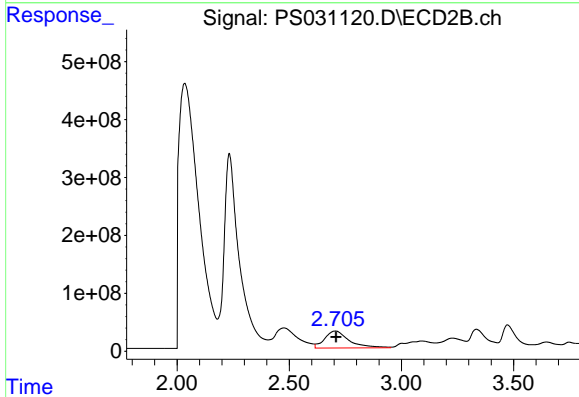




#1 Dalapon

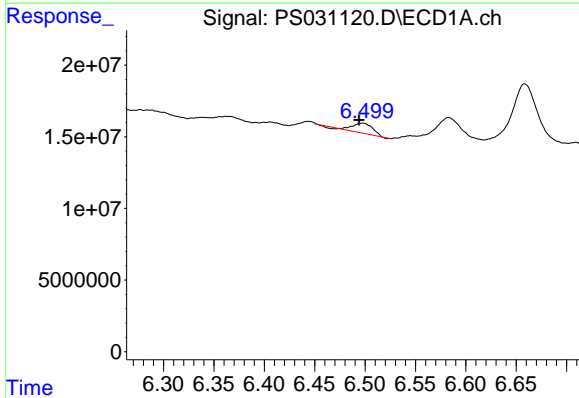
R.T.: 2.664 min
 Delta R.T.: -0.034 min
 Response: 1652510280
 Conc: 271.27 ng/ml

Instrument :
 ECD_S
 ClientSampleId :
 V897



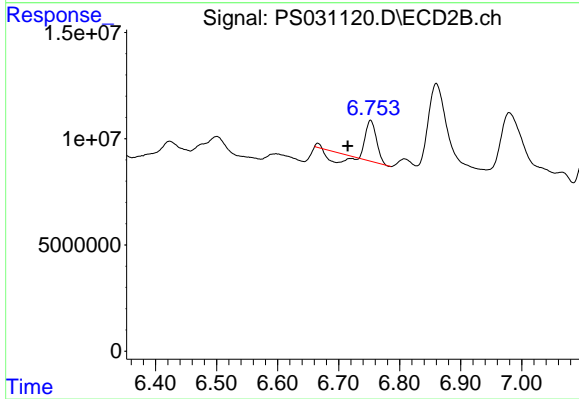
#1 Dalapon

R.T.: 2.706 min
 Delta R.T.: -0.002 min
 Response: 2222328152
 Conc: 781.72 ng/ml



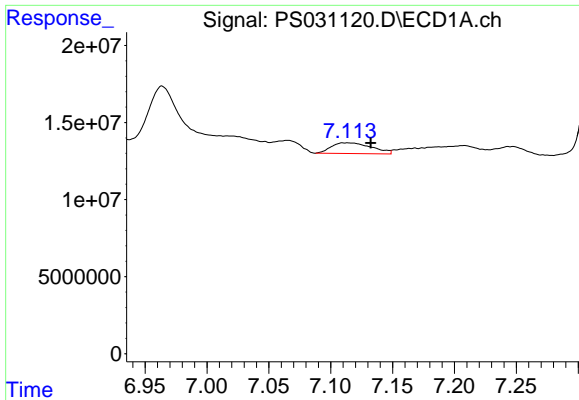
#2 3,5-DICHLOROBENZOIC ACID

R.T.: 6.498 min
 Delta R.T.: 0.004 min
 Response: 9414684
 Conc: 1.80 ng/ml



#2 3,5-DICHLOROBENZOIC ACID

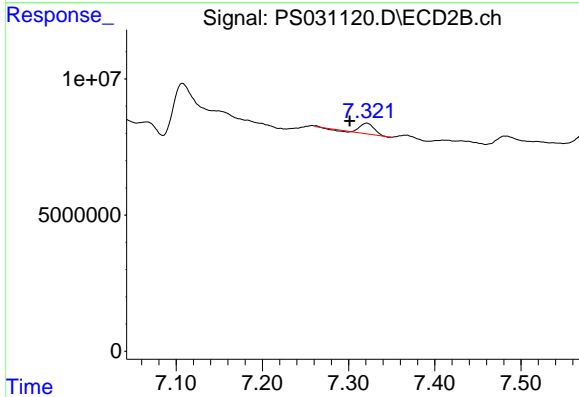
R.T.: 6.752 min
 Delta R.T.: 0.038 min
 Response: 15693531
 Conc: 10.12 ng/ml



#3 4-Nitrophenol

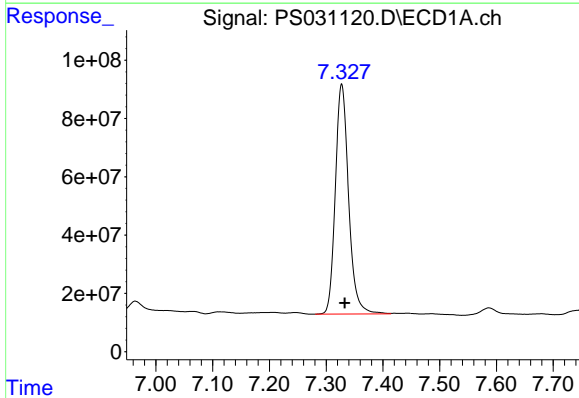
R.T.: 7.114 min
 Delta R.T.: -0.019 min
 Response: 15673319
 Conc: 11.61 ng/ml

Instrument :
 ECD_S
 ClientSampleId :
 V897



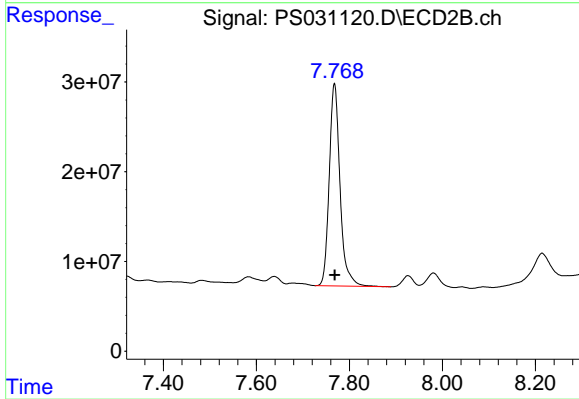
#3 4-Nitrophenol

R.T.: 7.321 min
 Delta R.T.: 0.020 min
 Response: 4641517
 Conc: 2.66 ng/ml



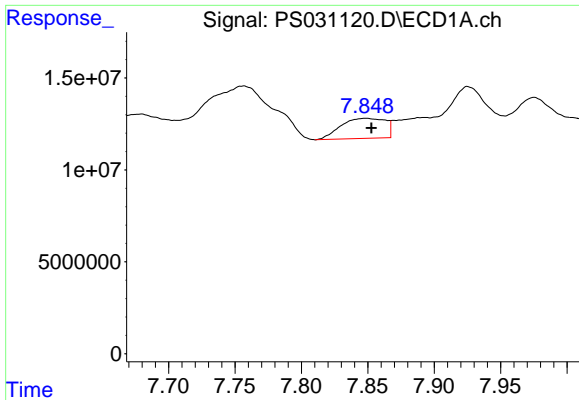
#4 2,4-DCAA

R.T.: 7.327 min
 Delta R.T.: -0.006 min
 Response: 1283073870
 Conc: 324.41 ng/ml



#4 2,4-DCAA

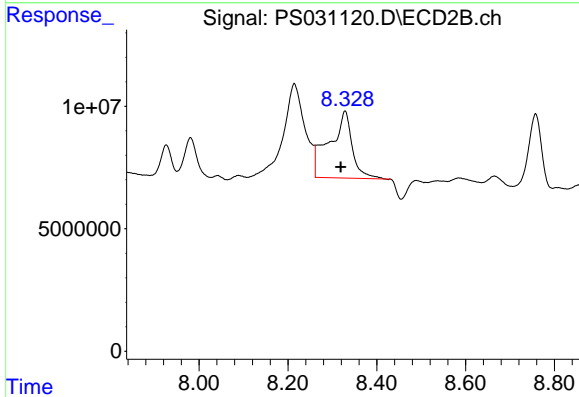
R.T.: 7.768 min
 Delta R.T.: 0.000 min
 Response: 364002519
 Conc: 351.34 ng/ml



#7 MCPA

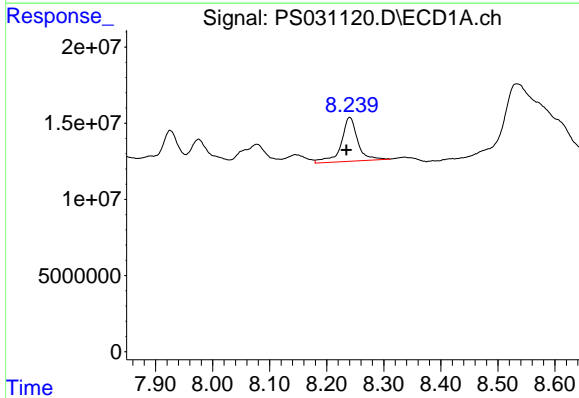
R.T.: 7.849 min
 Delta R.T.: -0.004 min
 Response: 25491068
 Conc: 2.34 ug/ml

Instrument :
 ECD_S
 ClientSampleId :
 V897



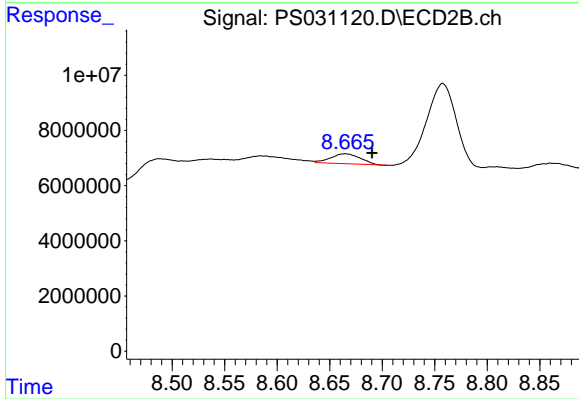
#7 MCPA

R.T.: 8.329 min
 Delta R.T.: 0.010 min
 Response: 97248814
 Conc: 30.34 ug/ml



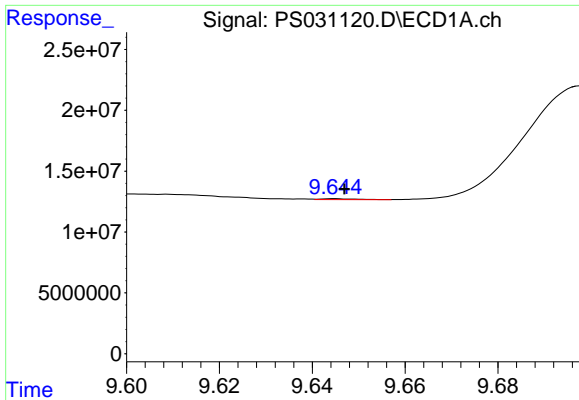
#8 DICHLORPROP

R.T.: 8.240 min
 Delta R.T.: 0.005 min
 Response: 57712749
 Conc: 16.95 ng/ml



#8 DICHLORPROP

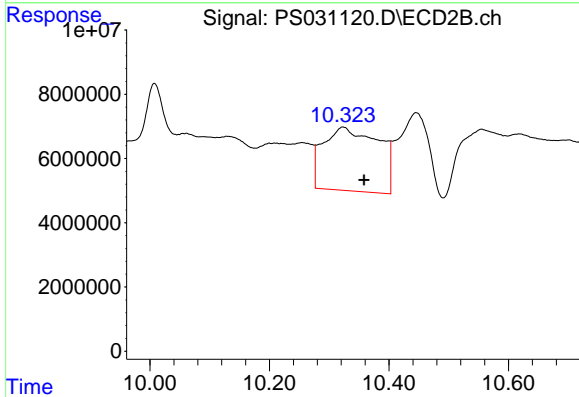
R.T.: 8.665 min
 Delta R.T.: -0.026 min
 Response: 7091910
 Conc: 4.67 ng/ml



#12 2,4,5-T

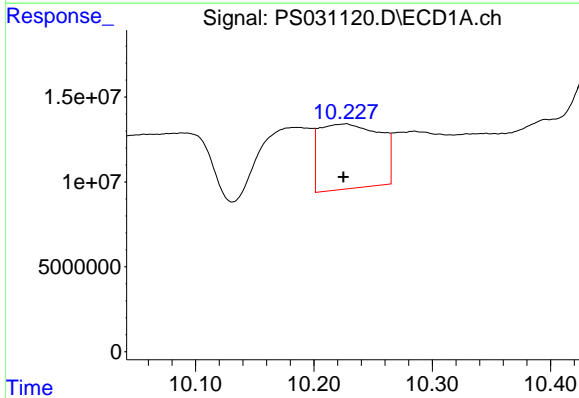
R.T.: 9.645 min
 Delta R.T.: -0.002 min
 Response: 386278
 Conc: N.D.

Instrument :
 ECD_S
 ClientSampleId :
 V897



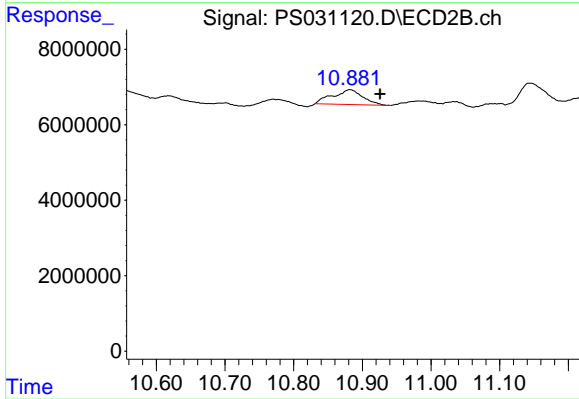
#12 2,4,5-T

R.T.: 10.323 min
 Delta R.T.: -0.035 min
 Response: 127183395
 Conc: 9.09 ng/ml



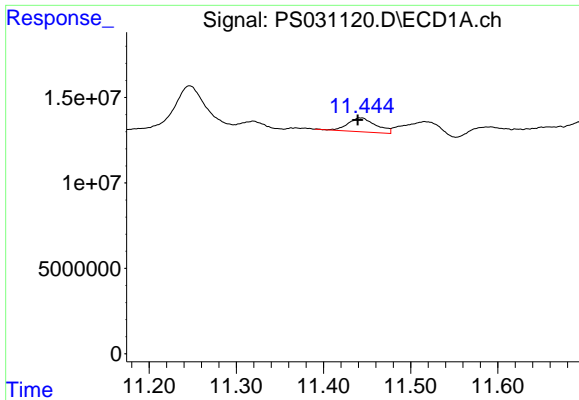
#13 2,4-DB

R.T.: 10.226 min
 Delta R.T.: 0.001 min
 Response: 135725129
 Conc: 62.52 ng/ml



#13 2,4-DB

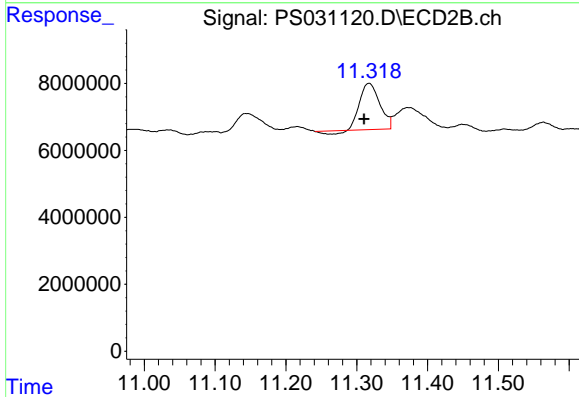
R.T.: 10.882 min
 Delta R.T.: -0.044 min
 Response: 11923643
 Conc: 10.08 ng/ml



#14 DINOSEB

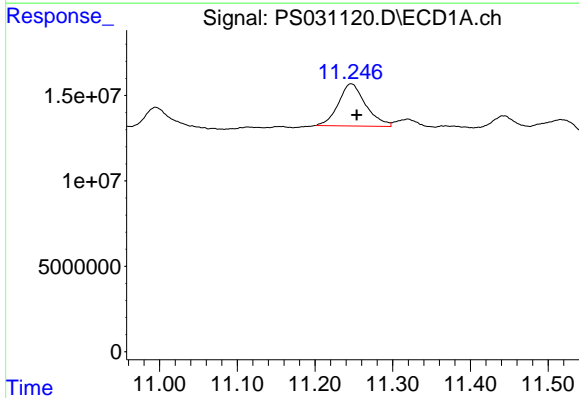
R.T.: 11.443 min
 Delta R.T.: 0.004 min
 Response: 18094187
 Conc: 1.37 ng/ml

Instrument :
 ECD_S
 ClientSampleId :
 V897



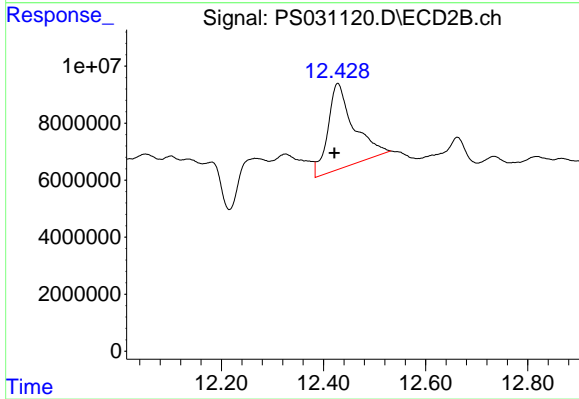
#14 DINOSEB

R.T.: 11.317 min
 Delta R.T.: 0.007 min
 Response: 25854396
 Conc: 2.28 ng/ml



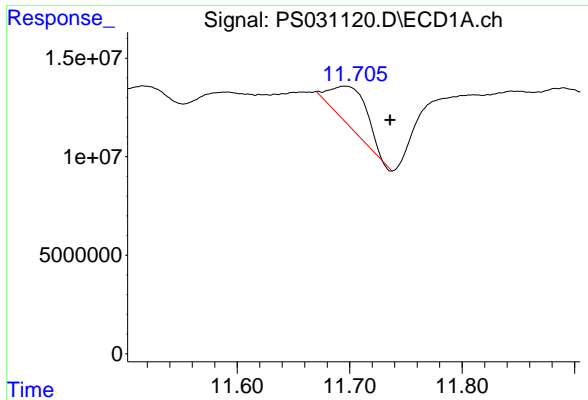
#15 Picloram

R.T.: 11.247 min
 Delta R.T.: -0.007 min
 Response: 60692577
 Conc: 4.17 ng/ml



#15 Picloram

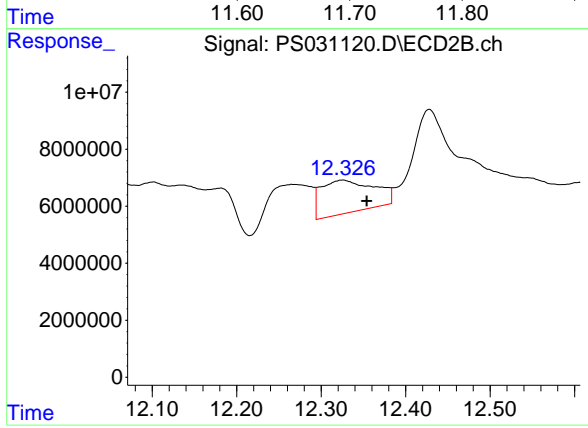
R.T.: 12.428 min
 Delta R.T.: 0.007 min
 Response: 106933990
 Conc: 4.55 ng/ml



#16 DCPA

R.T.: 11.696 min
 Delta R.T.: -0.040 min
 Response: 43936135
 Conc: 1.84 ng/ml

Instrument :
 ECD_S
 ClientSampleId :
 V897



#16 DCPA

R.T.: 12.325 min
 Delta R.T.: -0.029 min
 Response: 50232457
 Conc: 2.23 ng/ml