

Data Path : Z:\pestpcbsrv\HPCHEM1\ECD_S\Data\PS071725\
 Data File : PS031121.D
 Signal(s) : Signal #1: ECD1A.ch Signal #2: ECD2B.ch
 Acq On : 18 Jul 2025 01:38
 Operator : AR\AJ
 Sample : Q2605-06
 Misc :
 ALS Vial : 25 Sample Multiplier: 1

Instrument :
 ECD_S
 ClientSampleId :
 HR-MCN-COMP-01

Integration File signal 1: autoint1.e
 Integration File signal 2: autoint2.e
 Quant Time: Jul 18 03:23:15 2025
 Quant Method : Z:\pestpcbsrv\HPCHEM1\ECD_S\Method\PS071125.M
 Quant Title : 8080.M
 QLast Update : Mon Jul 14 05:51:06 2025
 Response via : Initial Calibration
 Integrator: ChemStation

Volume Inj. : 1 µl
 Signal #1 Phase : ZB-MR2 Signal #2 Phase: ZB-MR2
 Signal #1 Info : 30M x 0.32mm x0.5 Signal #2 Info : 30M x 0.32mm x 0.25µm

Compound	RT#1	RT#2	Resp#1	Resp#2	ng/ml	ng/ml

System Monitoring Compounds						
4) S 2,4-DCAA	7.327	7.767	1750.6E6	468.0E6	442.634	451.711
Target Compounds						
1) T Dalapon	2.666f	2.701	1464.1E6	1949.0E6	240.342	685.589 #
2) T 3,5-DICHL...	6.497	6.752f	9528604	29108335	1.819	18.775 #
3) T 4-Nitroph...	7.141	7.321	1748982	16135149	1.296	9.252 #
6) T MCPP	0.000	8.081	0	1274055	N.D.	<MDL
7) T MCPA	7.863	8.327	34865660	87875465	3.197	27.413 #
8) T DICHLORPROP	8.240	8.663f	43078730	9926764	12.651	6.534 #
10) T Pentachlo...	8.781	0.000	11068346	0	<MDL	N.D. #
11) T 2,4,5-TP ...	9.356	0.000	7723828	0	<MDL	N.D. #
12) T 2,4,5-T	9.642	10.320f	531809	198.7E6	<MDL	14.201 #
13) T 2,4-DB	10.226	10.878f	137.8E6	10305274	63.485	8.710 #
14) T DINOSEB	11.449	11.318	11783133	95510072	<MDL	8.414 #
15) T Picloram	11.245	12.427	58804849	62551628	4.035	2.664 #
16) T DCPA	11.697f	12.325f	44814301	29331200	1.872	1.301 #

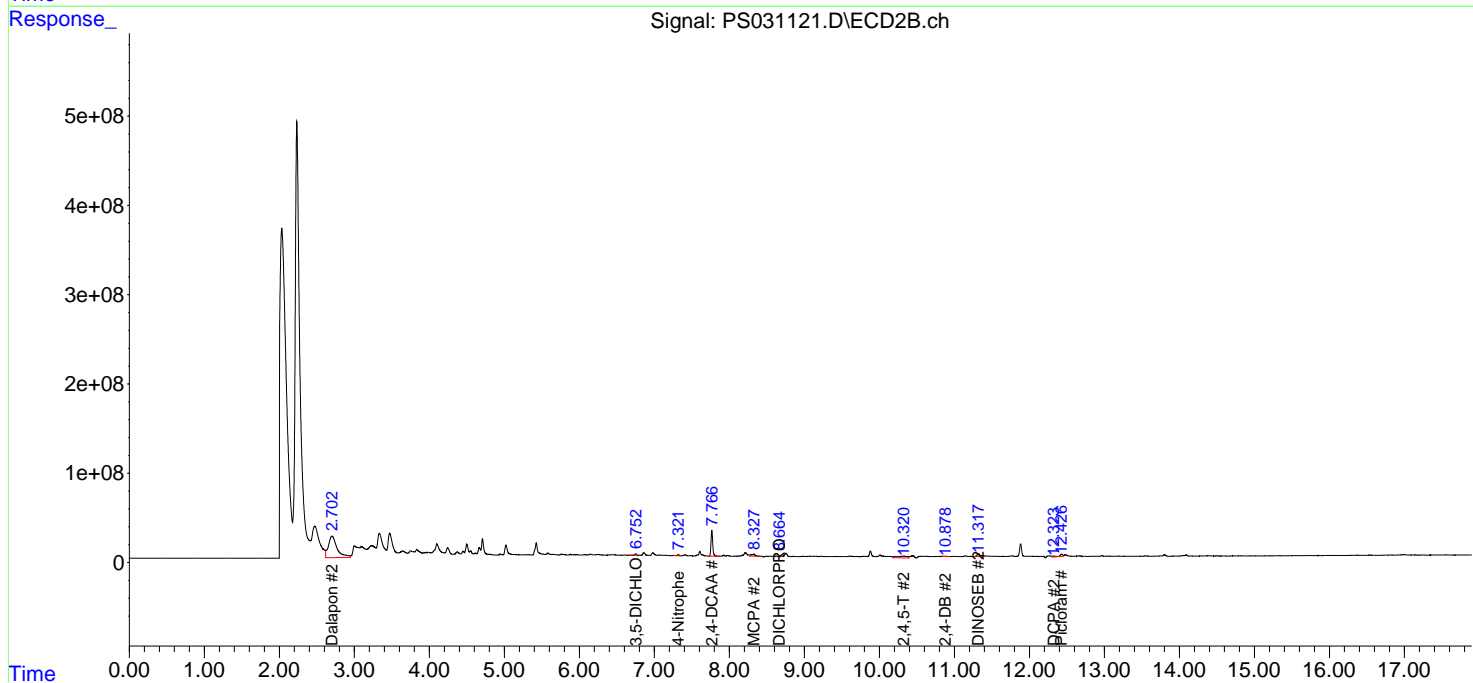
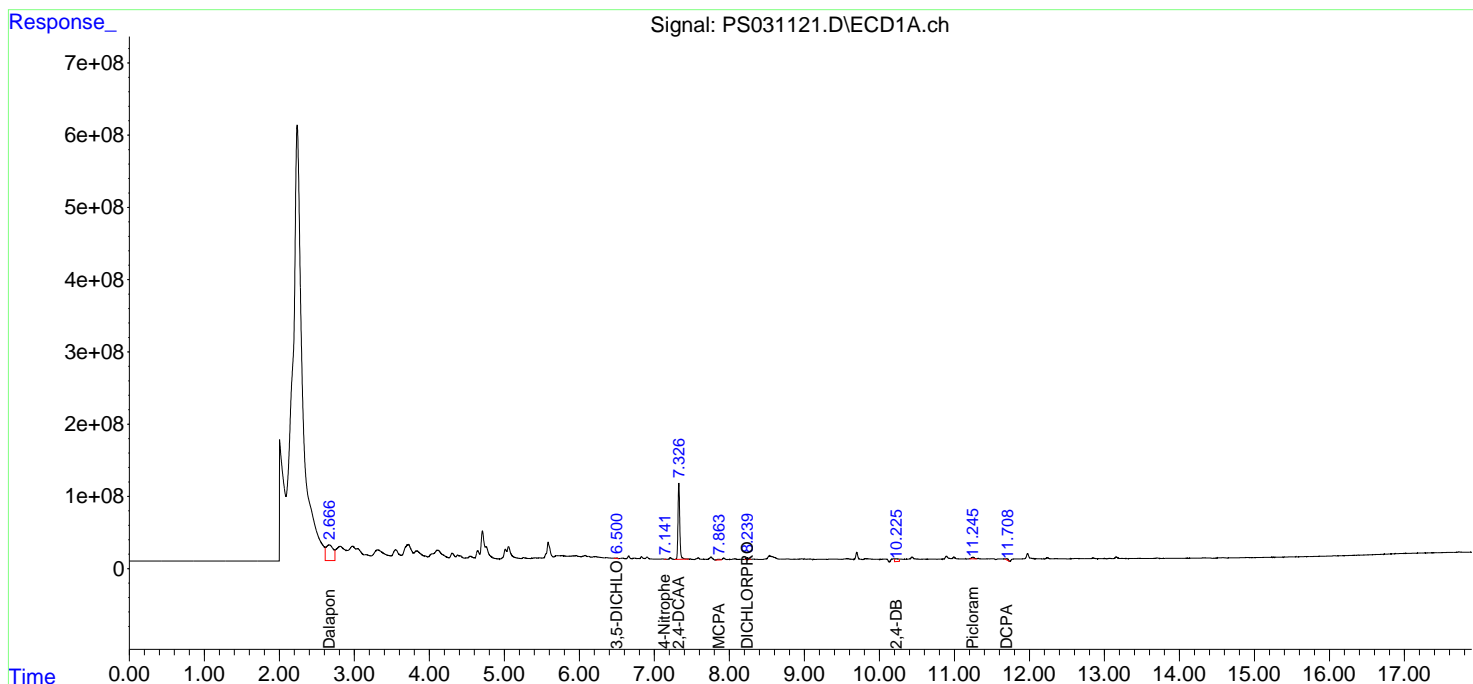
(f)=RT Delta > 1/2 Window (#)=Amounts differ by > 25% (m)=manual int.

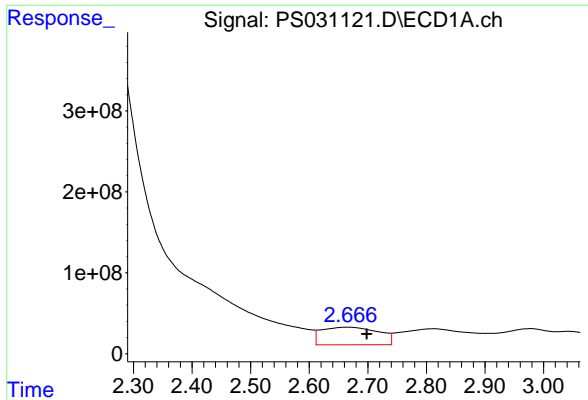
Data Path : Z:\pestpcbsrv\HPCHEM1\ECD_S\Data\PS071725\
 Data File : PS031121.D
 Signal(s) : Signal #1: ECD1A.ch Signal #2: ECD2B.ch
 Acq On : 18 Jul 2025 01:38
 Operator : AR\AJ
 Sample : Q2605-06
 Misc :
 ALS Vial : 25 Sample Multiplier: 1

Instrument :
 ECD_S
 ClientSampleId :
 HR-MCN-COMP-01

Integration File signal 1: autoint1.e
 Integration File signal 2: autoint2.e
 Quant Time: Jul 18 03:23:15 2025
 Quant Method : Z:\pestpcbsrv\HPCHEM1\ECD_S\Method\PS071125.M
 Quant Title : 8080.M
 QLast Update : Mon Jul 14 05:51:06 2025
 Response via : Initial Calibration
 Integrator: ChemStation

Volume Inj. : 1 µl
 Signal #1 Phase : ZB-MR1 Signal #2 Phase: ZB-MR2
 Signal #1 Info : 30M x 0.32mm x0.5 Signal #2 Info : 30M x 0.32mm x 0.25µm

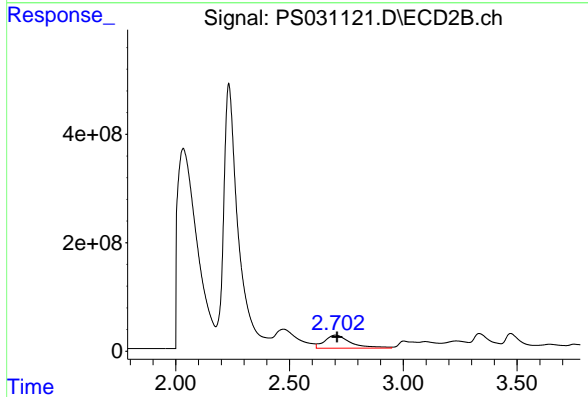




#1 Dalapon

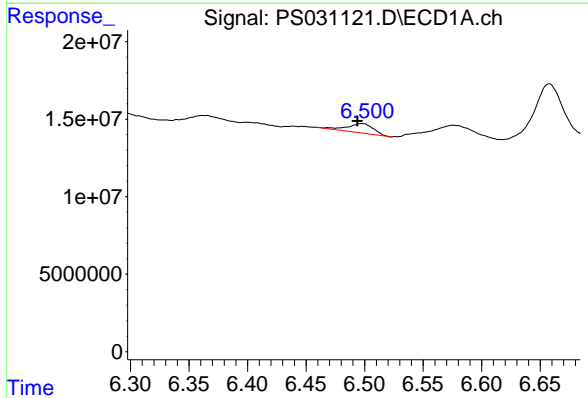
R.T.: 2.666 min
 Delta R.T.: -0.032 min
 Response: 1464096831
 Conc: 240.34 ng/ml

Instrument :
 ECD_S
 ClientSampleId :
 HR-MCN-COMP-01



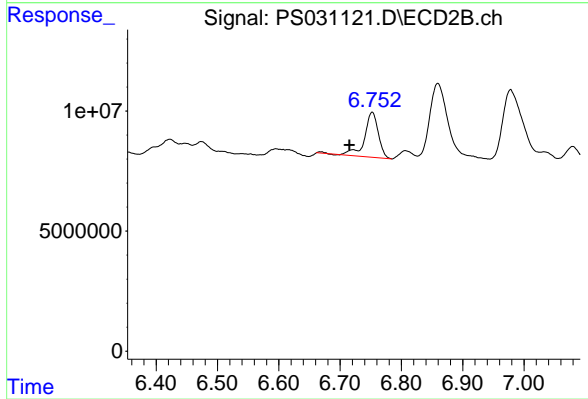
#1 Dalapon

R.T.: 2.701 min
 Delta R.T.: -0.008 min
 Response: 1949032968
 Conc: 685.59 ng/ml



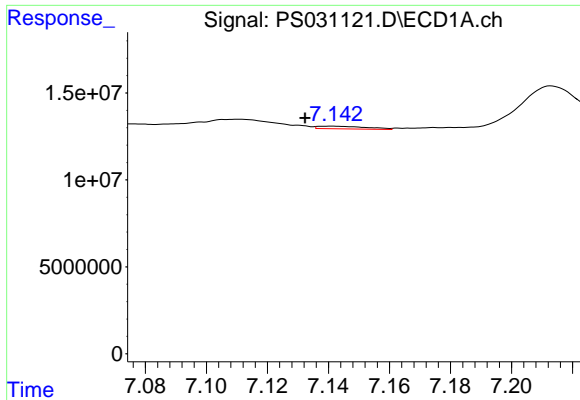
#2 3,5-DICHLOROBENZOIC ACID

R.T.: 6.497 min
 Delta R.T.: 0.003 min
 Response: 9528604
 Conc: 1.82 ng/ml



#2 3,5-DICHLOROBENZOIC ACID

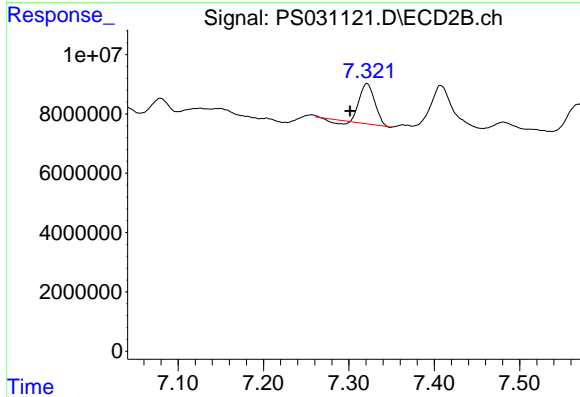
R.T.: 6.752 min
 Delta R.T.: 0.037 min
 Response: 29108335
 Conc: 18.78 ng/ml



#3 4-Nitrophenol

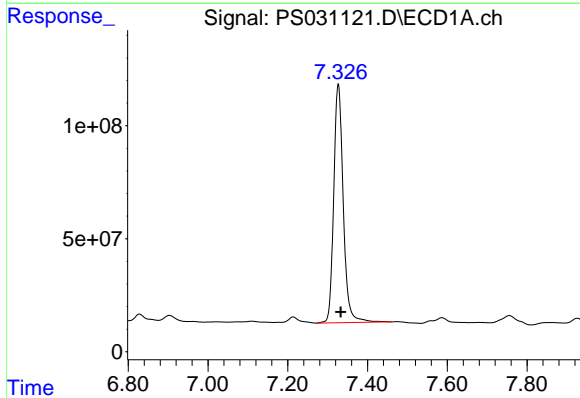
R.T.: 7.141 min
 Delta R.T.: 0.009 min
 Response: 1748982
 Conc: 1.30 ng/ml

Instrument :
 ECD_S
 ClientSampleId :
 HR-MCN-COMP-01



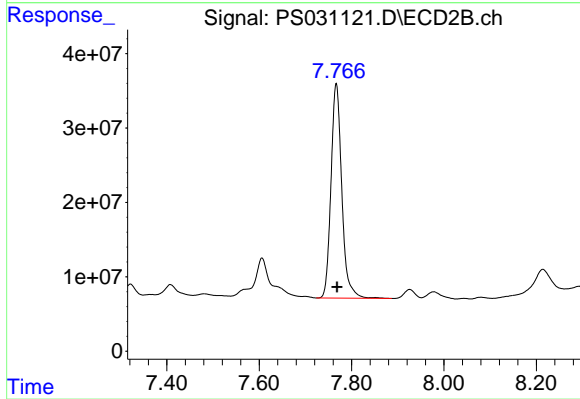
#3 4-Nitrophenol

R.T.: 7.321 min
 Delta R.T.: 0.020 min
 Response: 16135149
 Conc: 9.25 ng/ml



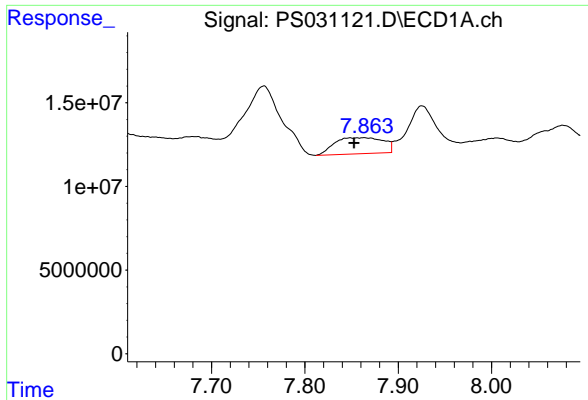
#4 2,4-DCAA

R.T.: 7.327 min
 Delta R.T.: -0.006 min
 Response: 1750649315
 Conc: 442.63 ng/ml



#4 2,4-DCAA

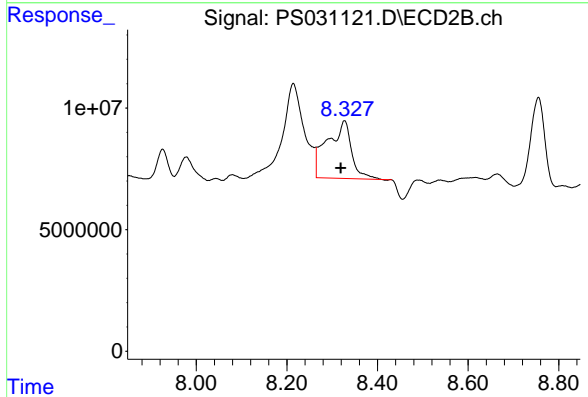
R.T.: 7.767 min
 Delta R.T.: -0.002 min
 Response: 467987210
 Conc: 451.71 ng/ml



#7 MCPA

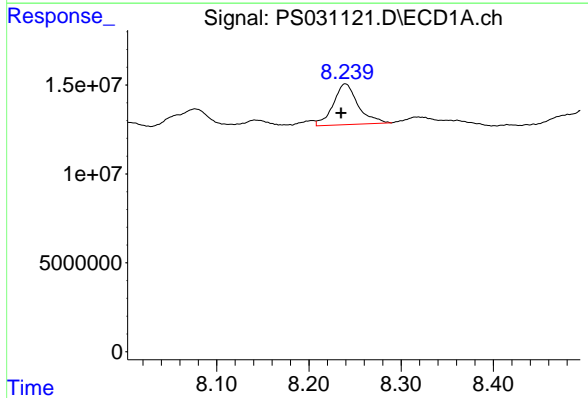
R.T.: 7.863 min
 Delta R.T.: 0.011 min
 Response: 34865660
 Conc: 3.20 ug/ml

Instrument :
 ECD_S
 ClientSampleId :
 HR-MCN-COMP-01



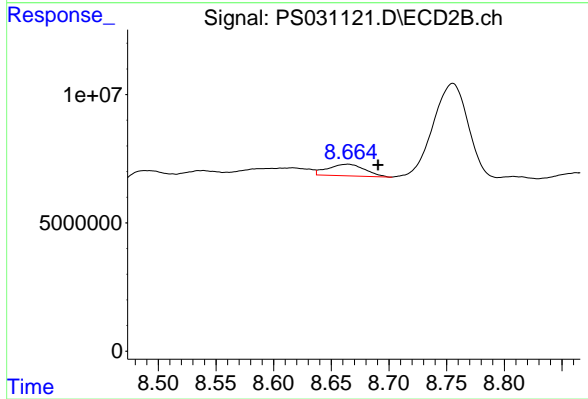
#7 MCPA

R.T.: 8.327 min
 Delta R.T.: 0.008 min
 Response: 87875465
 Conc: 27.41 ug/ml



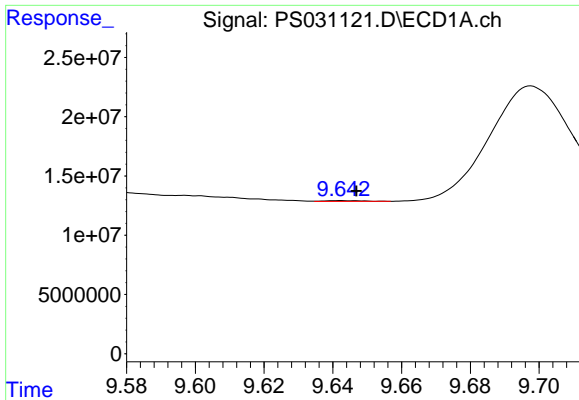
#8 DICHLORPROP

R.T.: 8.240 min
 Delta R.T.: 0.005 min
 Response: 43078730
 Conc: 12.65 ng/ml



#8 DICHLORPROP

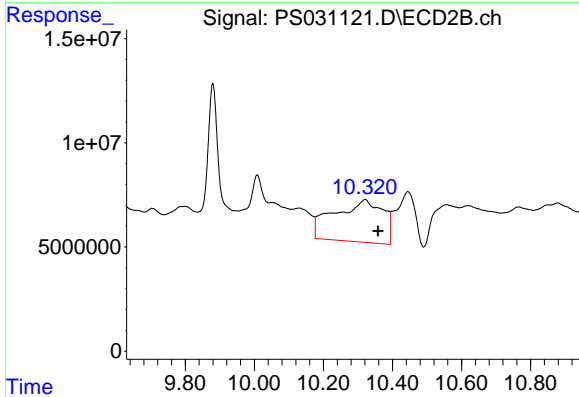
R.T.: 8.663 min
 Delta R.T.: -0.027 min
 Response: 9926764
 Conc: 6.53 ng/ml



#12 2,4,5-T

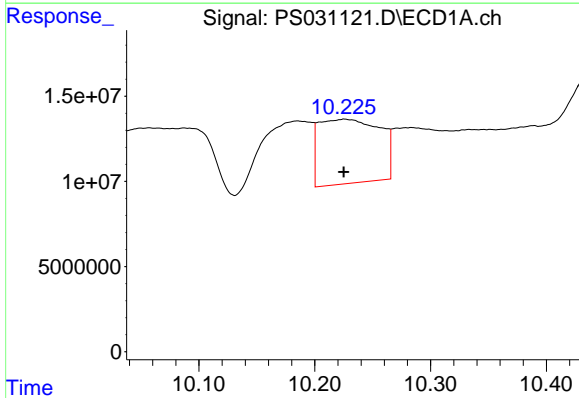
R.T.: 9.642 min
 Delta R.T.: -0.005 min
 Response: 531809
 Conc: N.D.

Instrument :
 ECD_S
 ClientSampleId :
 HR-MCN-COMP-01



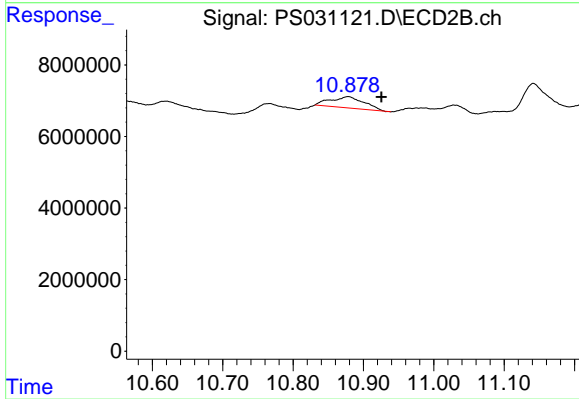
#12 2,4,5-T

R.T.: 10.320 min
 Delta R.T.: -0.038 min
 Response: 198695972
 Conc: 14.20 ng/ml



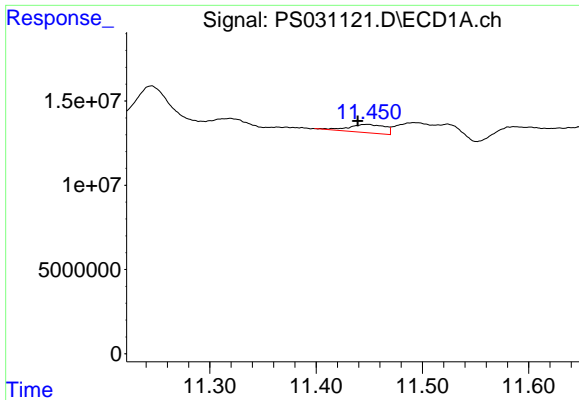
#13 2,4-DB

R.T.: 10.226 min
 Delta R.T.: 0.000 min
 Response: 137812049
 Conc: 63.48 ng/ml



#13 2,4-DB

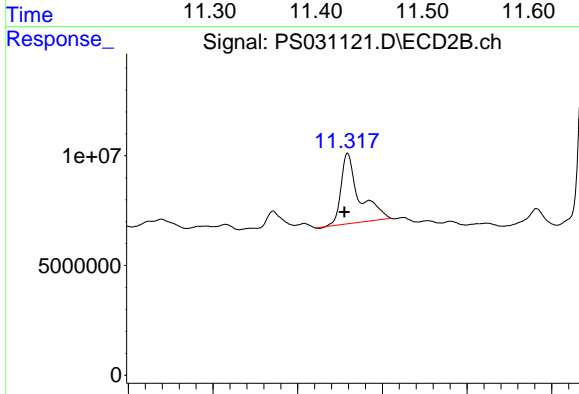
R.T.: 10.878 min
 Delta R.T.: -0.048 min
 Response: 10305274
 Conc: 8.71 ng/ml



#14 DINOSEB

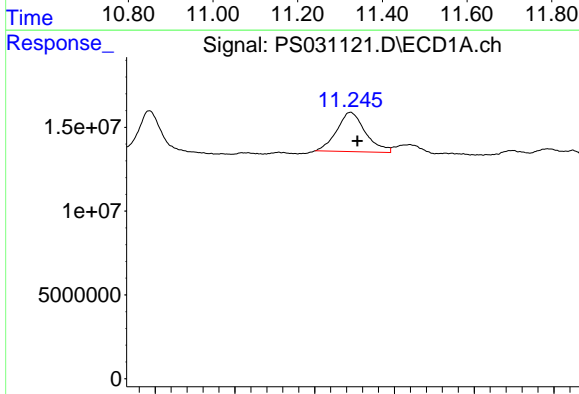
R.T.: 11.449 min
 Delta R.T.: 0.009 min
 Response: 11783133
 Conc: N.D.

Instrument :
 ECD_S
 ClientSampleId :
 HR-MCN-COMP-01



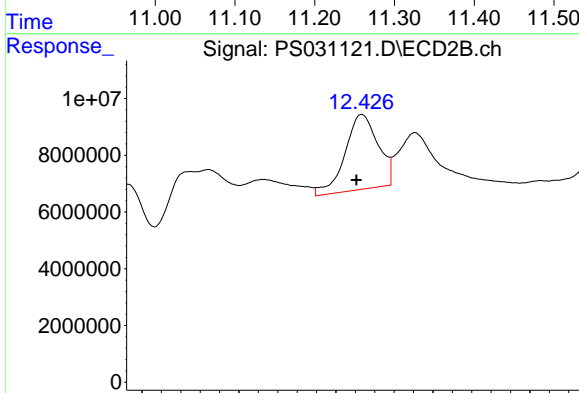
#14 DINOSEB

R.T.: 11.318 min
 Delta R.T.: 0.007 min
 Response: 95510072
 Conc: 8.41 ng/ml



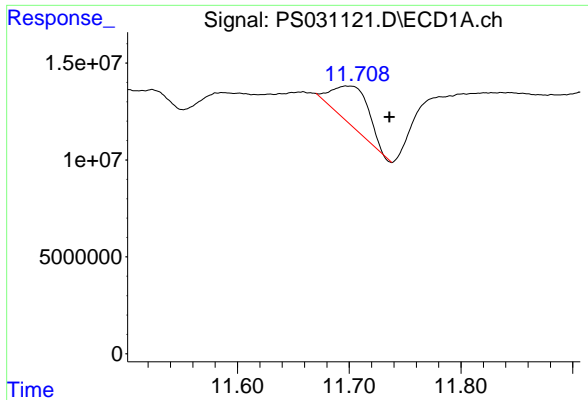
#15 Picloram

R.T.: 11.245 min
 Delta R.T.: -0.009 min
 Response: 58804849
 Conc: 4.04 ng/ml



#15 Picloram

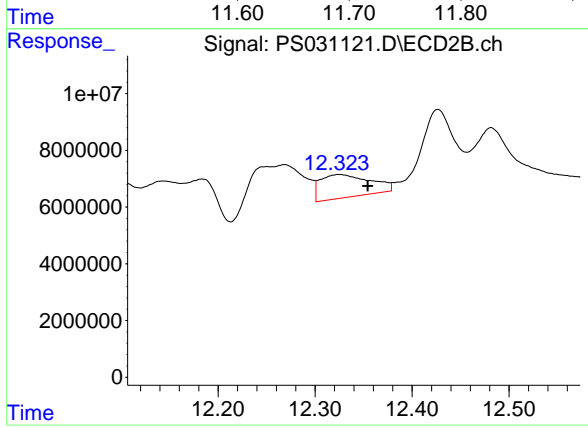
R.T.: 12.427 min
 Delta R.T.: 0.006 min
 Response: 62551628
 Conc: 2.66 ng/ml



#16 DCPA

R.T.: 11.697 min
Delta R.T.: -0.039 min
Response: 44814301
Conc: 1.87 ng/ml

Instrument :
ECD_S
ClientSampleId :
HR-MCN-COMP-01



#16 DCPA

R.T.: 12.325 min
Delta R.T.: -0.029 min
Response: 29331200
Conc: 1.30 ng/ml