

Data Path : Z:\pestpcbsrv\HPCHEM1\ECD_S\Data\PS071818\
 Data File : PS001133.D
 Signal(s) : Signal #1: ECD1A.ch Signal #2: ECD2B.ch
 Acq On : 18 Jul 2018 18:00
 Operator : UA
 Sample : HSTDCCC750
 Misc :
 ALS Vial : 3 Sample Multiplier: 1

Instrument :
 ECD_S
 ClientSampleId :

Integration File signal 1: autoint1.e
 Integration File signal 2: autoint2.e
 Quant Time: Jul 19 03:41:18 2018
 Quant Method : Z:\pestpcbsrv\HPCHEM1\ECD_S\Method\PS070818.M
 Quant Title : 8080.M
 QLast Update : Mon Jul 09 02:00:25 2018
 Response via : Initial Calibration
 Integrator: ChemStation

Volume Inj. : 2 µl
 Signal #1 Phase : Rtx-CLPesticides Signal #2 Phase: Rtx-CLPesticides2
 Signal #1 Info : 30M x 0.32mm x0.5 Signal #2 Info : 30M x 0.32mm x 0.25µm

	Compound	RT#1	RT#2	Resp#1	Resp#2	ng/ml	ng/ml

System Monitoring Compounds							
4) S	2,4-DCAA	11.664	11.078	167.4E6	169.0E6	811.453	775.982
Target Compounds							
1) T	Dalapon	3.054	2.464	184.3E6	174.0E6	686.252	645.706
2) T	3,5-DICHL...	10.080	9.225	223.9E6	208.2E6	747.371	707.738
3) T	4-Nitroph...	11.256	10.223	93129228	82353916	678.983	682.500
5) T	DICAMBA	11.980	11.365	607.0E6	578.8E6	770.931	737.323
6) T	MCP P	12.319	11.591	45105657	39212875	82.115	74.993
7) T	MCPA	12.570	11.967	66533519	52248571	72.902	67.219
8) T	DICHLORPROP	13.173	12.490	124.5E6	144.9E6	617.902	717.420
9) T	2,4-D	13.530	12.961	205.2E6	199.4E6	753.756	720.040
10) T	Pentachlo...	13.921	13.517	2407.8E6	2351.9E6	792.777	749.356
11) T	2,4,5-TP ...	14.791	14.130	960.4E6	928.2E6	786.110	739.651
12) T	2,4,5-T	15.188	14.701	951.4E6	720.3E6	781.304	696.148
13) T	2,4-DB	15.939	15.347	124.8E6	128.2E6	771.021	836.974
14) T	DINOSEB	17.441	15.779	645.2E6	599.1E6	745.989	715.320
15) T	Picloram	17.198	16.962	1284.8E6	1134.1E6	709.448	744.831
16) T	DCPA	17.780	17.017	1155.7E6	1192.0E6	793.830	693.347

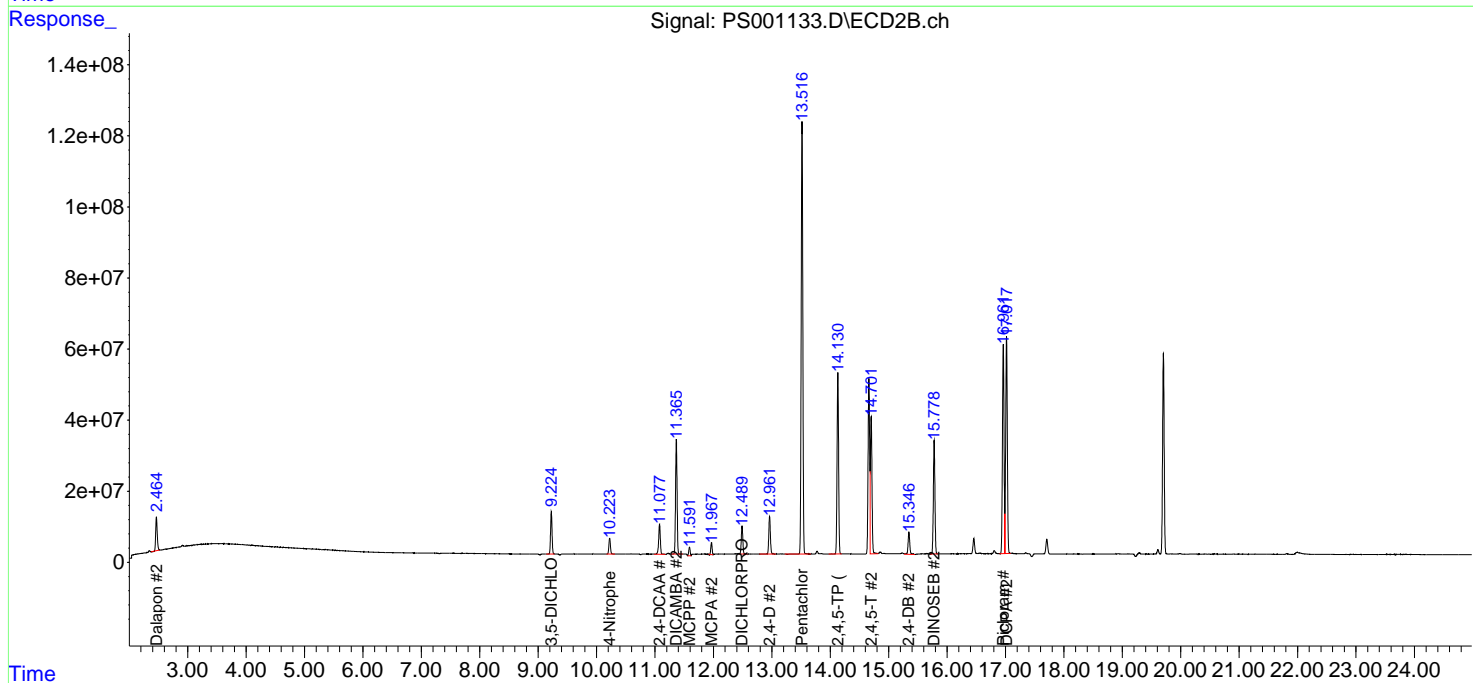
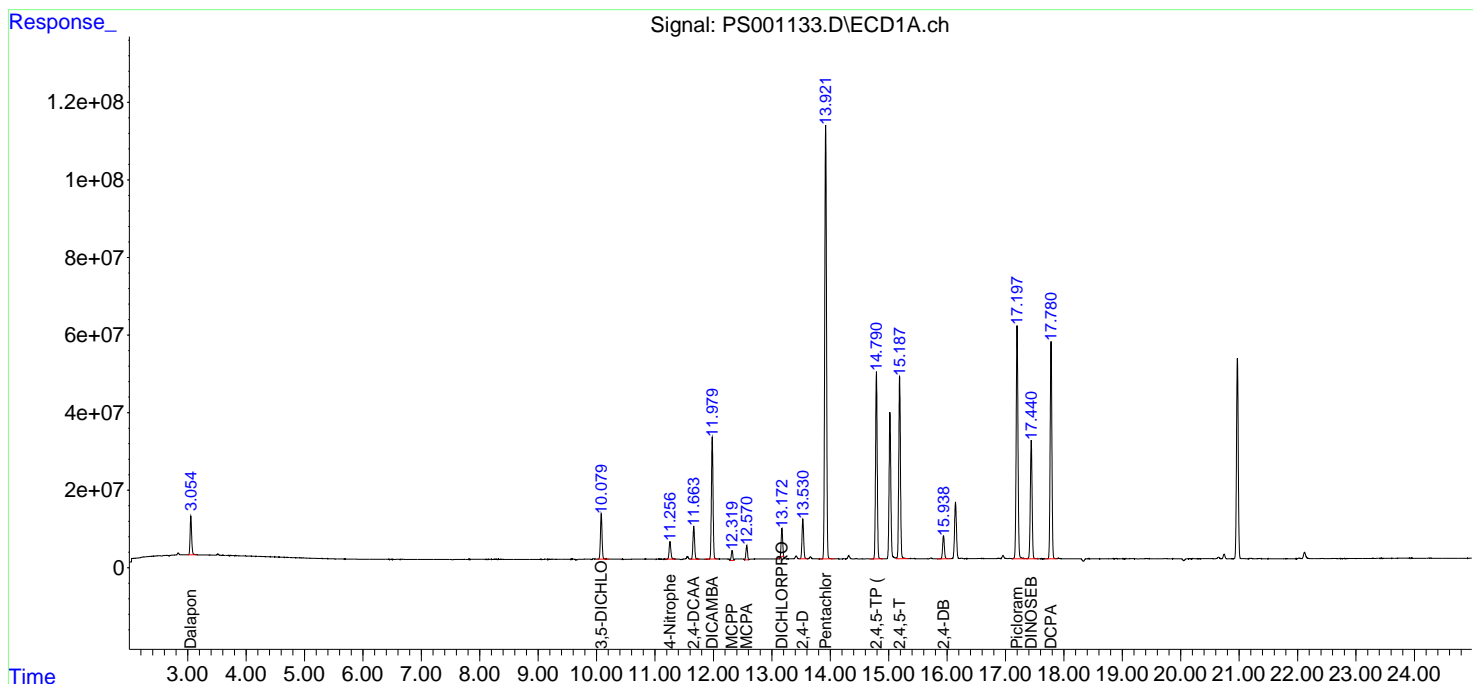
(f)=RT Delta > 1/2 Window (#)=Amounts differ by > 25% (m)=manual int.

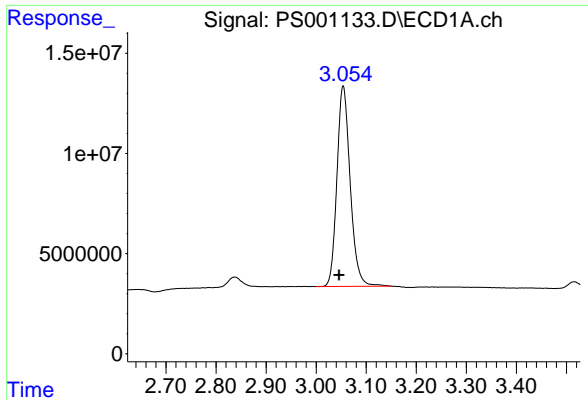
Data Path : Z:\pestpcbsrv\HPCHEM1\ECD_S\Data\PS071818\
 Data File : PS001133.D
 Signal(s) : Signal #1: ECD1A.ch Signal #2: ECD2B.ch
 Acq On : 18 Jul 2018 18:00
 Operator : UA
 Sample : HSTDCCC750
 Misc :
 ALS Vial : 3 Sample Multiplier: 1

Instrument :
 ECD_S
 ClientSampled :

Integration File signal 1: autoint1.e
 Integration File signal 2: autoint2.e
 Quant Time: Jul 19 03:41:18 2018
 Quant Method : Z:\pestpcbsrv\HPCHEM1\ECD_S\Method\PS070818.M
 Quant Title : 8080.M
 QLast Update : Mon Jul 09 02:00:25 2018
 Response via : Initial Calibration
 Integrator: ChemStation

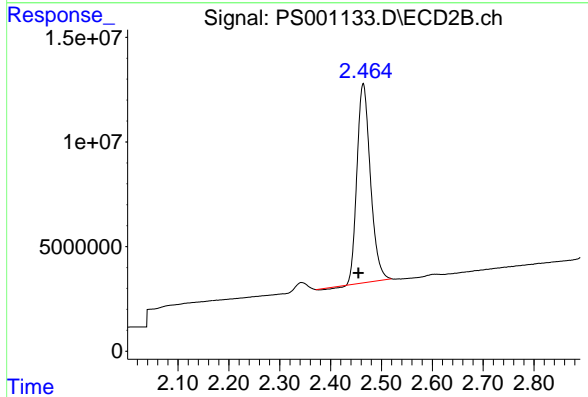
Volume Inj. : 2 µl
 Signal #1 Phase : Rtx-CLPesticides Signal #2 Phase: Rtx-CLPesticides2
 Signal #1 Info : 30M x 0.32mm x0.5 Signal #2 Info : 30M x 0.32mm x 0.25µm



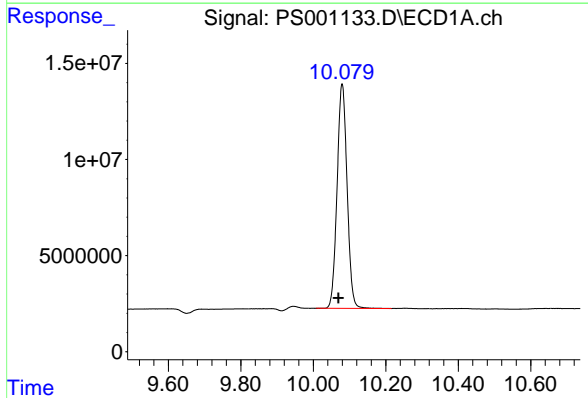


#1 Dalapon
R.T.: 3.054 min
Delta R.T.: 0.008 min
Response: 184264228
Conc: 686.25 ng/ml

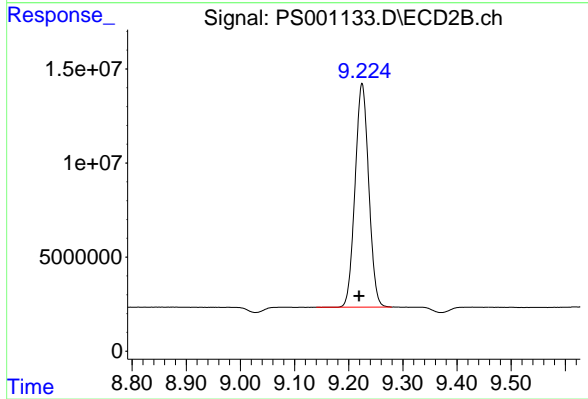
Instrument :
ECD_S
ClientSampleId :



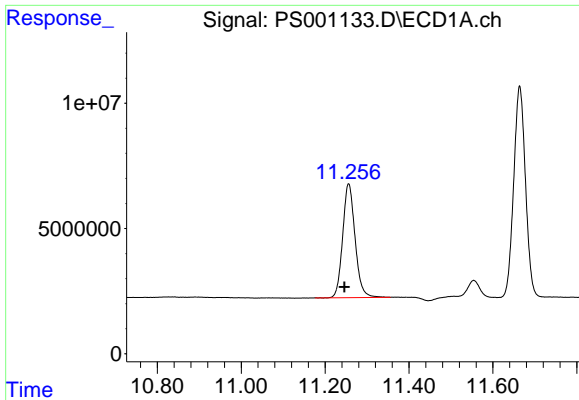
#1 Dalapon
R.T.: 2.464 min
Delta R.T.: 0.010 min
Response: 173970770
Conc: 645.71 ng/ml



#2 3,5-DICHLOROBENZOIC ACID
R.T.: 10.080 min
Delta R.T.: 0.010 min
Response: 223851801
Conc: 747.37 ng/ml

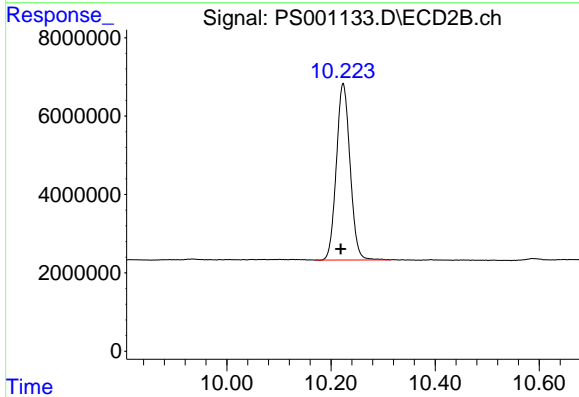


#2 3,5-DICHLOROBENZOIC ACID
R.T.: 9.225 min
Delta R.T.: 0.005 min
Response: 208183784
Conc: 707.74 ng/ml

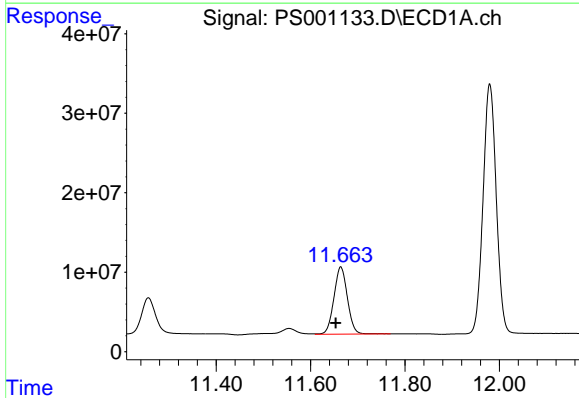


#3 4-Nitrophenol
R.T.: 11.256 min
Delta R.T.: 0.010 min
Response: 93129228
Conc: 678.98 ng/ml

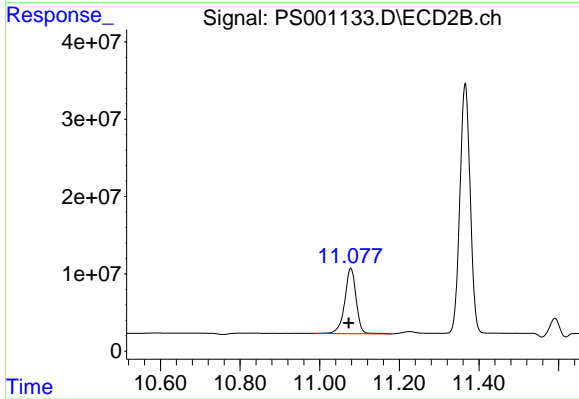
Instrument :
ECD_S
ClientSampled :



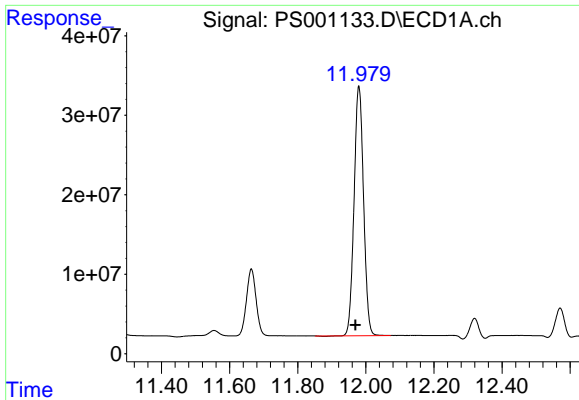
#3 4-Nitrophenol
R.T.: 10.223 min
Delta R.T.: 0.004 min
Response: 82353916
Conc: 682.50 ng/ml



#4 2,4-DCAA
R.T.: 11.664 min
Delta R.T.: 0.010 min
Response: 167418971
Conc: 811.45 ng/ml

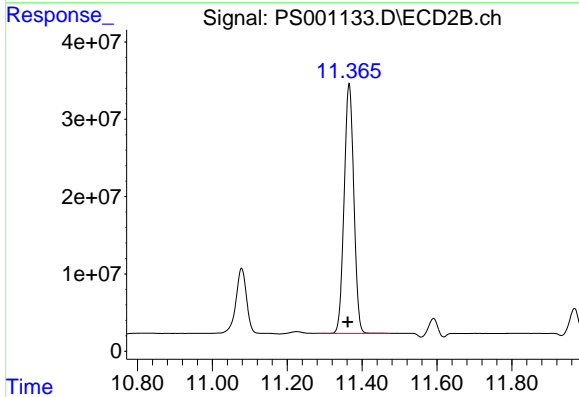


#4 2,4-DCAA
R.T.: 11.078 min
Delta R.T.: 0.004 min
Response: 169006513
Conc: 775.98 ng/ml

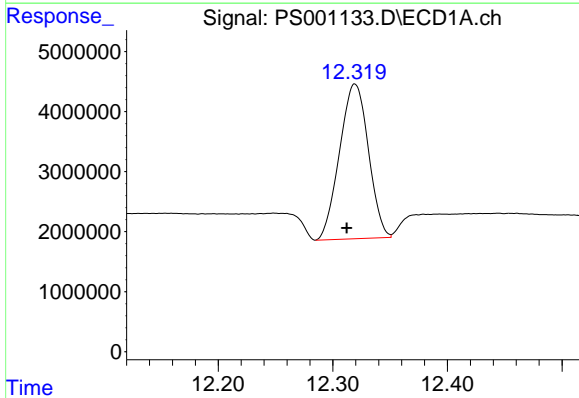


#5 DICAMBA
 R.T.: 11.980 min
 Delta R.T.: 0.010 min
 Response: 607010226
 Conc: 770.93 ng/ml

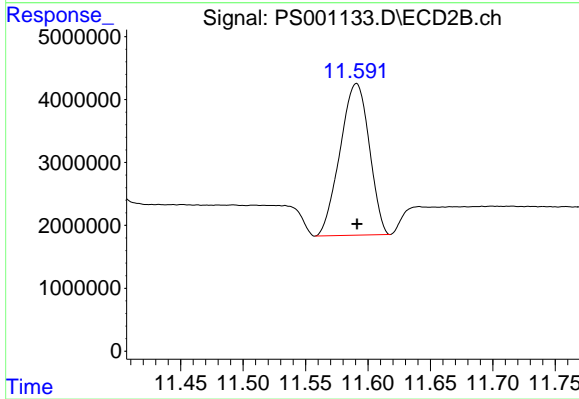
Instrument :
 ECD_S
 ClientSampled :



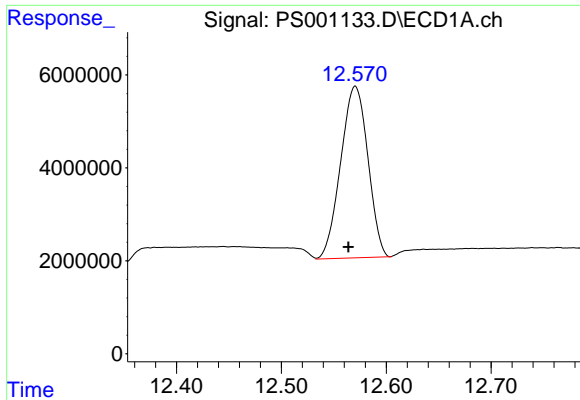
#5 DICAMBA
 R.T.: 11.365 min
 Delta R.T.: 0.004 min
 Response: 578755099
 Conc: 737.32 ng/ml



#6 MCPP
 R.T.: 12.319 min
 Delta R.T.: 0.007 min
 Response: 45105657
 Conc: 82.12 ug/ml

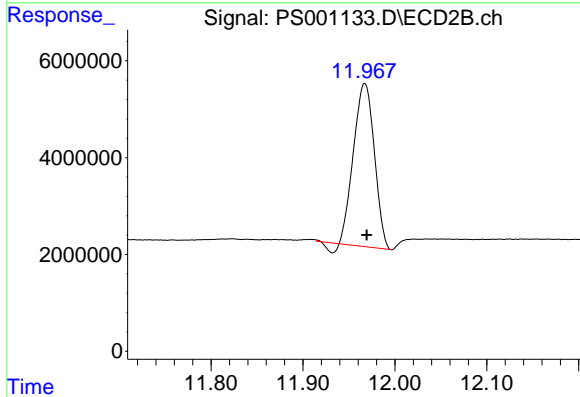


#6 MCPP
 R.T.: 11.591 min
 Delta R.T.: 0.000 min
 Response: 39212875
 Conc: 74.99 ug/ml

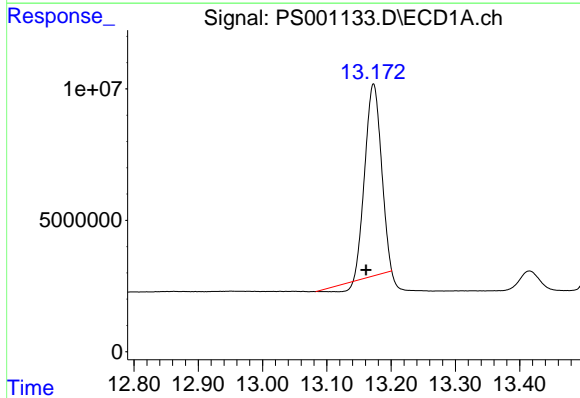


#7 MCPA
 R.T.: 12.570 min
 Delta R.T.: 0.007 min
 Response: 66533519
 Conc: 72.90 ug/ml

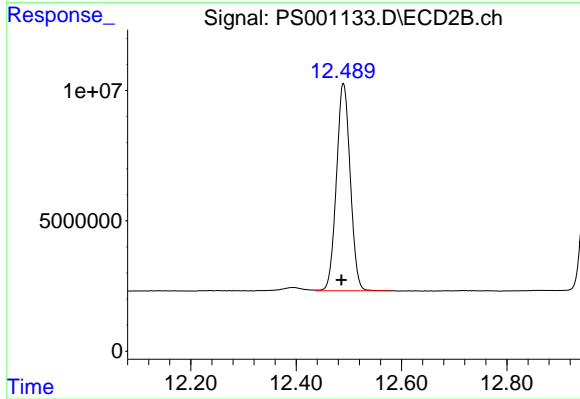
Instrument :
 ECD_S
 ClientSampleId :



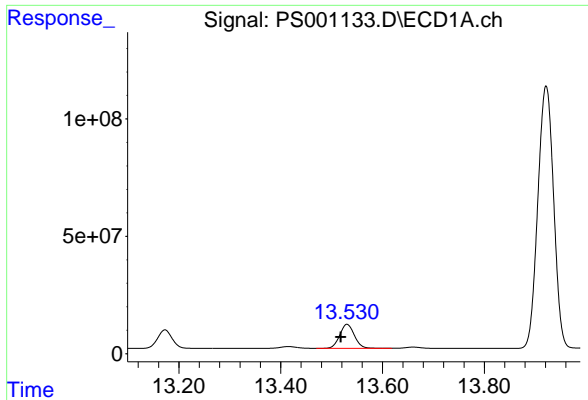
#7 MCPA
 R.T.: 11.967 min
 Delta R.T.: -0.002 min
 Response: 52248571
 Conc: 67.22 ug/ml



#8 DICHLORPROP
 R.T.: 13.173 min
 Delta R.T.: 0.011 min
 Response: 124547779
 Conc: 617.90 ng/ml

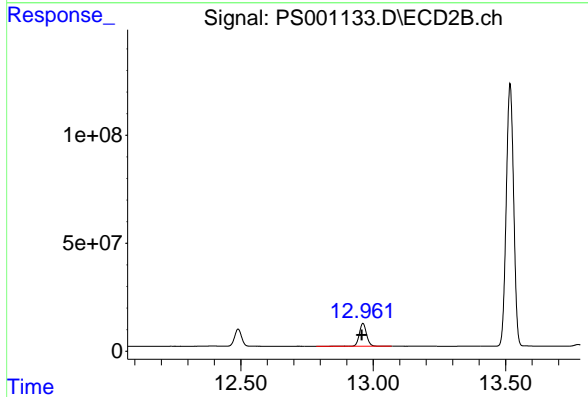


#8 DICHLORPROP
 R.T.: 12.490 min
 Delta R.T.: 0.004 min
 Response: 144902679
 Conc: 717.42 ng/ml

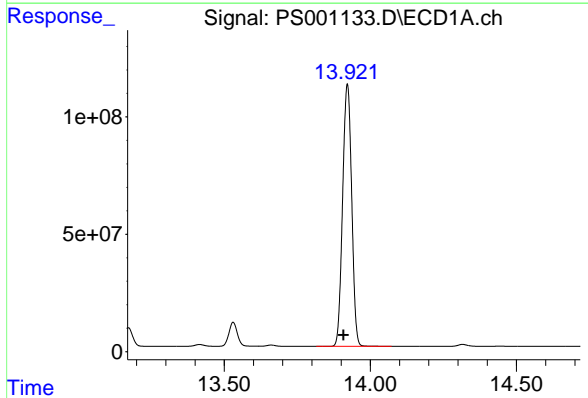


#9 2,4-D
 R.T.: 13.530 min
 Delta R.T.: 0.012 min
 Response: 205163770
 Conc: 753.76 ng/ml

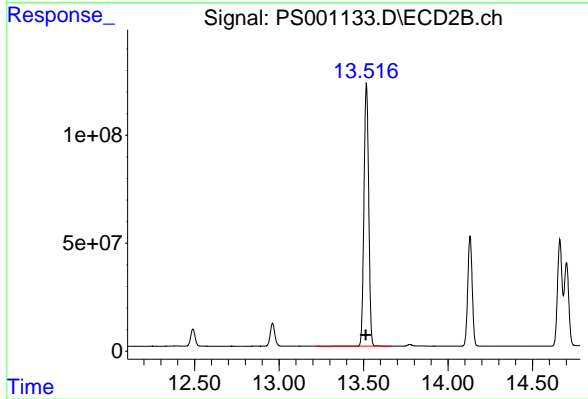
Instrument :
 ECD_S
 ClientSampled :



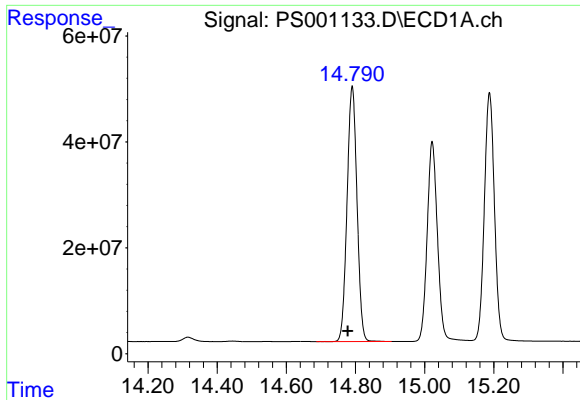
#9 2,4-D
 R.T.: 12.961 min
 Delta R.T.: 0.004 min
 Response: 199422186
 Conc: 720.04 ng/ml



#10 Pentachlorophenol
 R.T.: 13.921 min
 Delta R.T.: 0.013 min
 Response: 2407752601
 Conc: 792.78 ng/ml

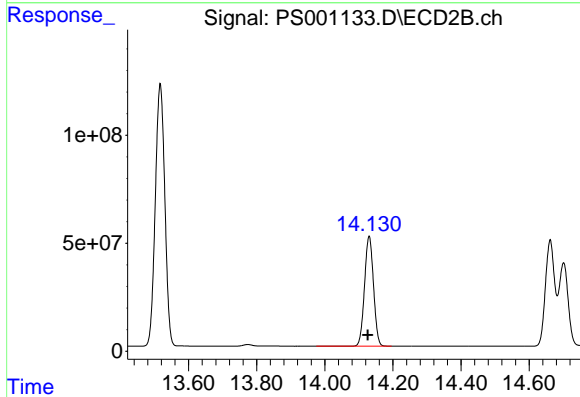


#10 Pentachlorophenol
 R.T.: 13.517 min
 Delta R.T.: 0.003 min
 Response: 2351869886
 Conc: 749.36 ng/ml

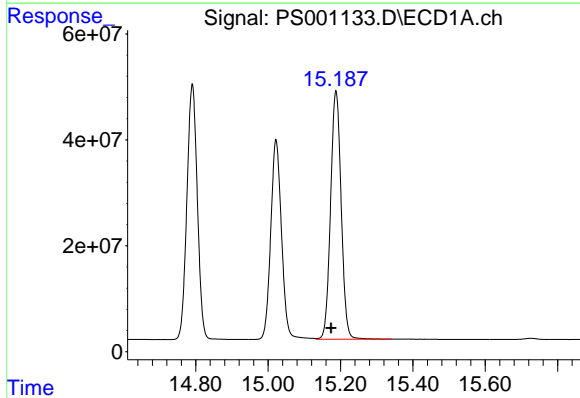


#11 2,4,5-TP (SILVEX)
 R.T.: 14.791 min
 Delta R.T.: 0.013 min
 Response: 960411607
 Conc: 786.11 ng/ml

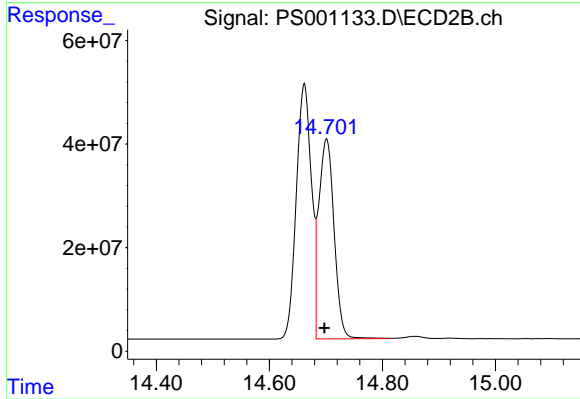
Instrument :
 ECD_S
 ClientSampleId :



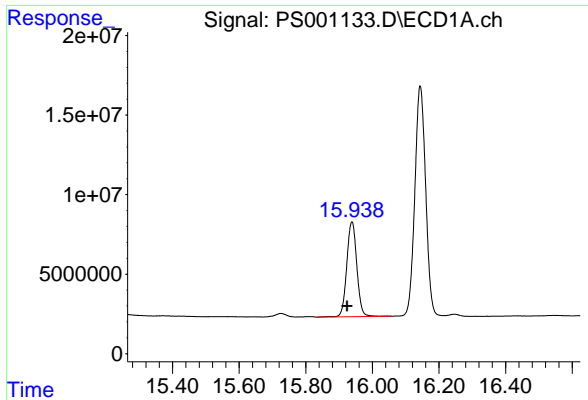
#11 2,4,5-TP (SILVEX)
 R.T.: 14.130 min
 Delta R.T.: 0.004 min
 Response: 928208408
 Conc: 739.65 ng/ml



#12 2,4,5-T
 R.T.: 15.188 min
 Delta R.T.: 0.013 min
 Response: 951410694
 Conc: 781.30 ng/ml

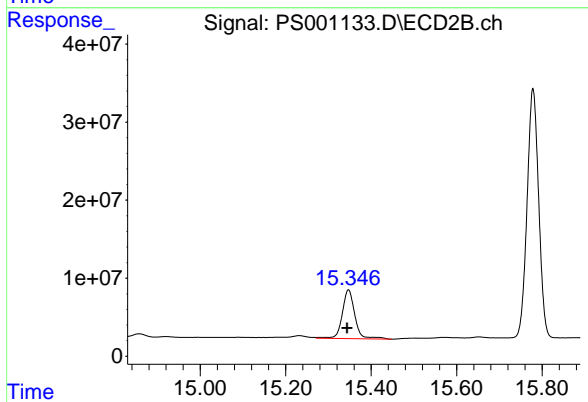


#12 2,4,5-T
 R.T.: 14.701 min
 Delta R.T.: 0.004 min
 Response: 720301278
 Conc: 696.15 ng/ml

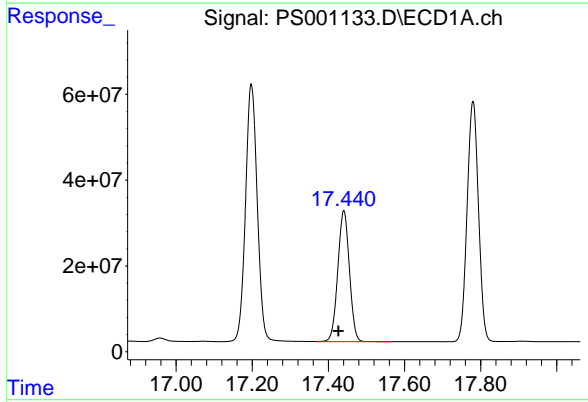


#13 2,4-DB
R.T.: 15.939 min
Delta R.T.: 0.014 min
Response: 124816148
Conc: 771.02 ng/ml

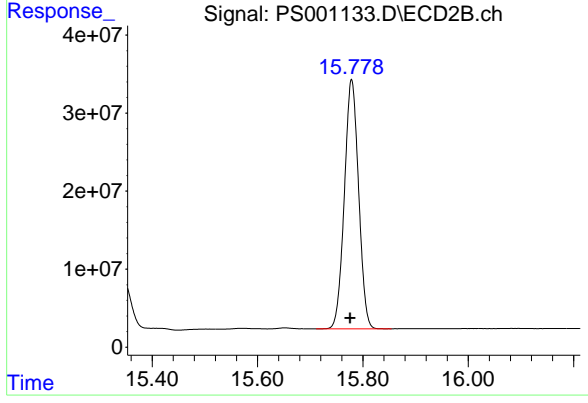
Instrument :
ECD_S
ClientSampled :



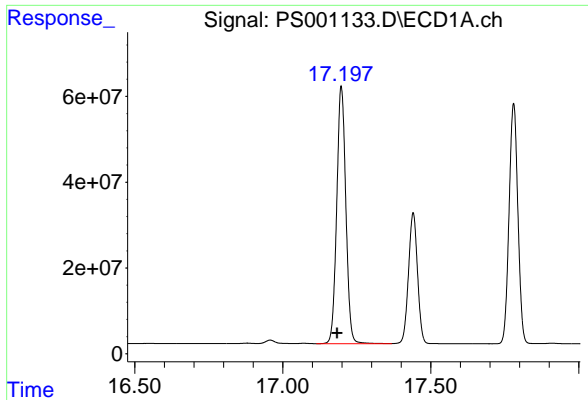
#13 2,4-DB
R.T.: 15.347 min
Delta R.T.: 0.003 min
Response: 128207793
Conc: 836.97 ng/ml



#14 DINOSEB
R.T.: 17.441 min
Delta R.T.: 0.014 min
Response: 645163156
Conc: 745.99 ng/ml

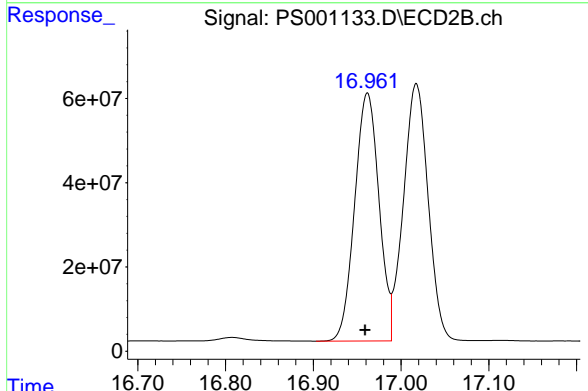


#14 DINOSEB
R.T.: 15.779 min
Delta R.T.: 0.003 min
Response: 599072638
Conc: 715.32 ng/ml

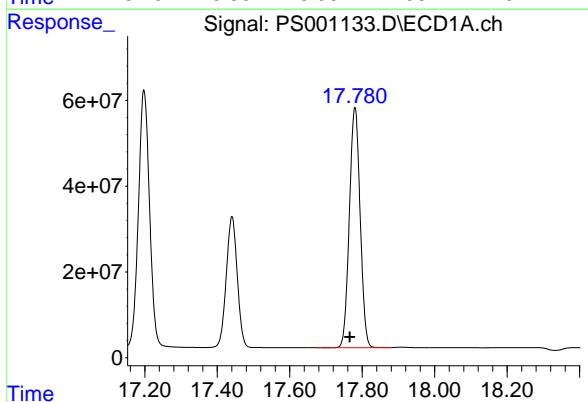


#15 Picloram
 R.T.: 17.198 min
 Delta R.T.: 0.014 min
 Response: 1284846486
 Conc: 709.45 ng/ml

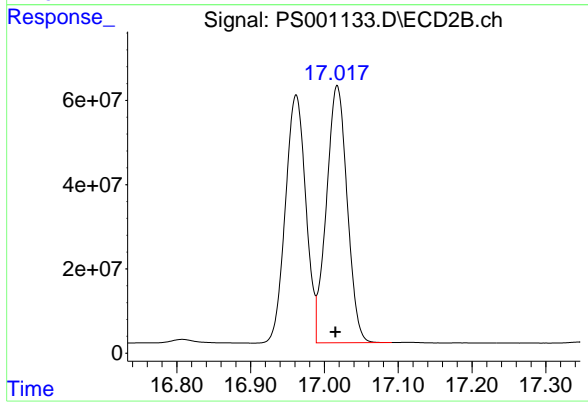
Instrument :
 ECD_S
 ClientSampled :



#15 Picloram
 R.T.: 16.962 min
 Delta R.T.: 0.002 min
 Response: 1134139759
 Conc: 744.83 ng/ml



#16 DCPA
 R.T.: 17.780 min
 Delta R.T.: 0.014 min
 Response: 1155670897
 Conc: 793.83 ng/ml



#16 DCPA
 R.T.: 17.017 min
 Delta R.T.: 0.002 min
 Response: 1191967159
 Conc: 693.35 ng/ml