

Data Path : Z:\pestpcbsrv\HPCHEM1\ECD\_S\Data\PS071825\  
 Data File : PS031135.D  
 Signal(s) : Signal #1: ECD1A.ch Signal #2: ECD2B.ch  
 Acq On : 18 Jul 2025 17:21  
 Operator : AR\AJ  
 Sample : Q2529-03  
 Misc :  
 ALS Vial : 10 Sample Multiplier: 1

Instrument :  
 ECD\_S  
 ClientSampleId :  
 TP-79

Integration File signal 1: autoint1.e  
 Integration File signal 2: autoint2.e  
 Quant Time: Jul 18 23:20:07 2025  
 Quant Method : Z:\pestpcbsrv\HPCHEM1\ECD\_S\Method\PS071125.M  
 Quant Title : 8080.M  
 QLast Update : Mon Jul 14 05:51:06 2025  
 Response via : Initial Calibration  
 Integrator: ChemStation

Volume Inj. : 1 µl  
 Signal #1 Phase : ZB-MR2 Signal #2 Phase: ZB-MR2  
 Signal #1 Info : 30M x 0.32mm x0.5 Signal #2 Info : 30M x 0.32mm x 0.25µm

Compound	RT#1	RT#2	Resp#1	Resp#2	ng/ml	ng/ml
-----						
System Monitoring Compounds						
4) S 2,4-DCAA	7.323	7.771	439.3E6	256.2E6	111.082	247.328 #
Target Compounds						
1) T Dalapon	2.672f	2.696	1903.7E6	2097.2E6	312.501	737.696 #
2) T 3,5-DICHL...	6.507	6.744f	10582857	13588517	2.020	8.765 #
3) T 4-Nitroph...	7.086f	7.299	203.6E6	42283882	150.822	24.247 #
5) T DICAMBA	7.485f	7.972	-8049957	11742549	N.D.	1.813
6) T MCPP	7.726	8.070	114.0E6	4525578	12.389	2.117 #
7) T MCPA	7.854	8.277f	135.3E6	112.0E6	12.402	34.932 #
8) T DICHLORPROP	0.000	8.698	0	42226446	N.D.	27.794
9) T 2,4-D	8.439f	9.047	50980181	1801995	16.560	1.060 #
10) T Pentachlo...	8.766	9.547	9570834	21510524	<MDL	<MDL #
11) T 2,4,5-TP ...	9.355	9.958f	6788824	32119667	<MDL	2.189 #
12) T 2,4,5-T	9.616f	10.356	58672138	249.1E6	3.857	17.802 #
13) T 2,4-DB	10.207	10.901f	174.6E6	-65935226	80.443	N.D. #
14) T DINOSEB	11.438	11.316	56496903	2386.7E6	4.285	210.251 #
15) T Picloram	11.254	12.422	91158397	53050272	6.256	2.259 #
-----						

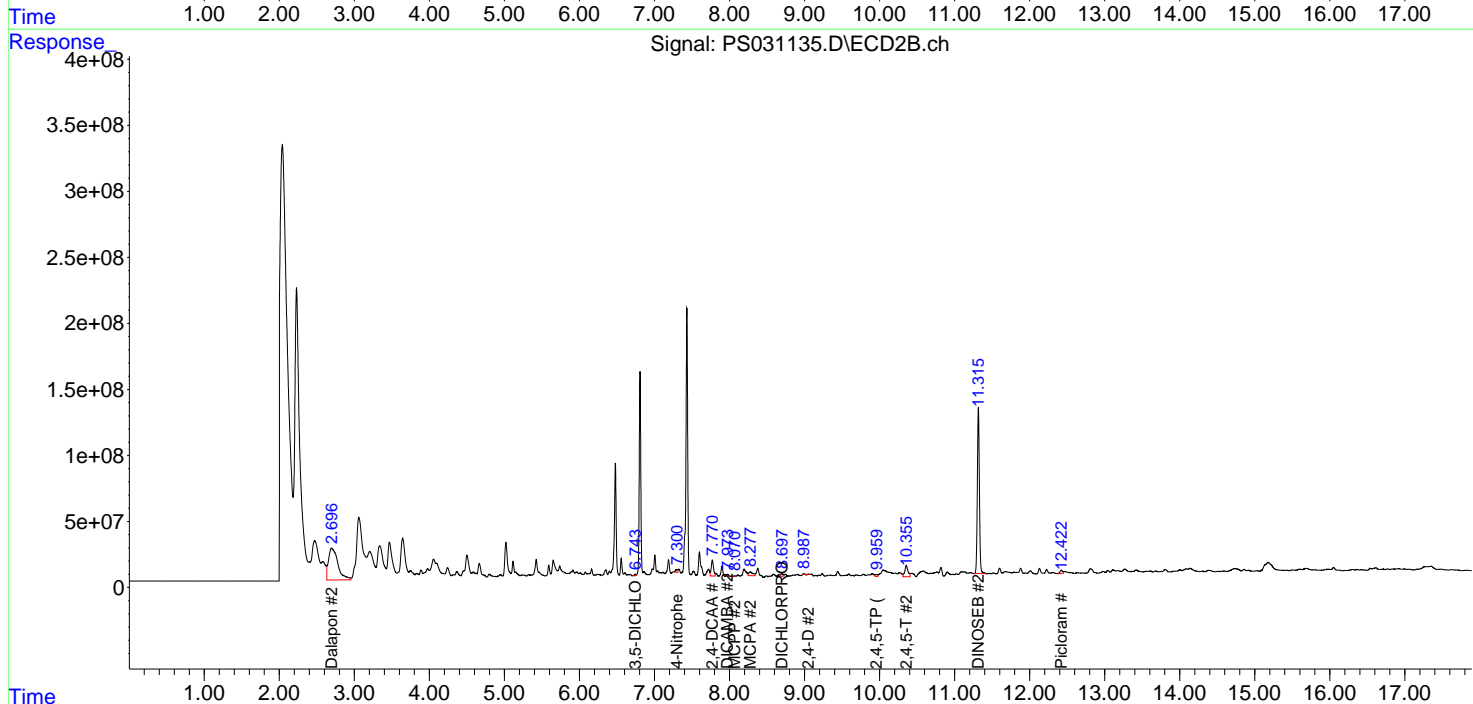
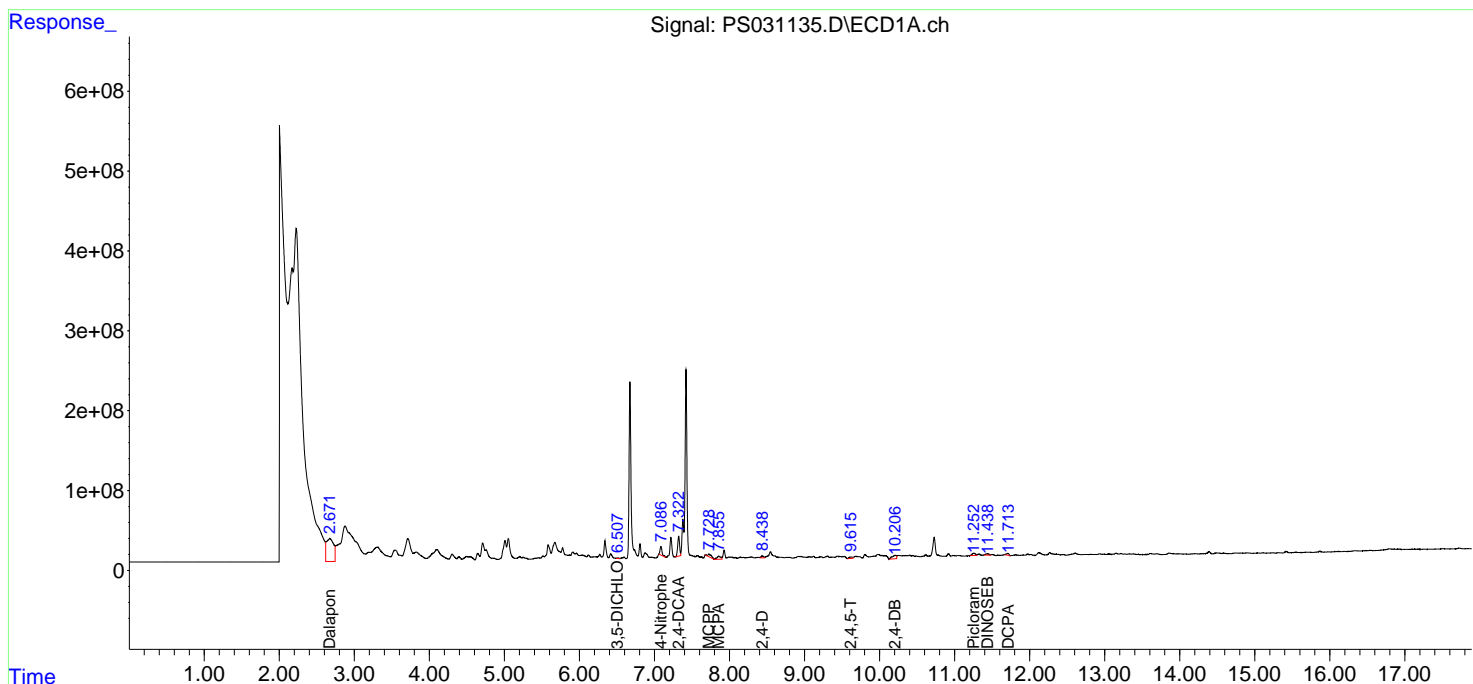
(f)=RT Delta > 1/2 Window (#)=Amounts differ by > 25% (m)=manual int.

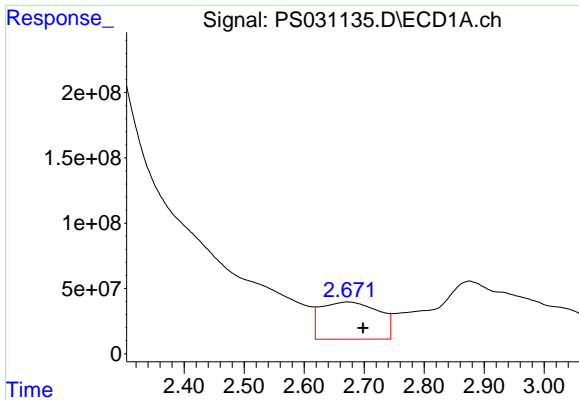
Data Path : Z:\pestpcbsrv\HPCHEM1\ECD\_S\Data\PS071825\  
 Data File : PS031135.D  
 Signal(s) : Signal #1: ECD1A.ch Signal #2: ECD2B.ch  
 Acq On : 18 Jul 2025 17:21  
 Operator : AR\AJ  
 Sample : Q2529-03  
 Misc :  
 ALS Vial : 10 Sample Multiplier: 1

Instrument :  
 ECD\_S  
 ClientSampleId :  
 TP-79

Integration File signal 1: autoint1.e  
 Integration File signal 2: autoint2.e  
 Quant Time: Jul 18 23:20:07 2025  
 Quant Method : Z:\pestpcbsrv\HPCHEM1\ECD\_S\Method\PS071125.M  
 Quant Title : 8080.M  
 QLast Update : Mon Jul 14 05:51:06 2025  
 Response via : Initial Calibration  
 Integrator: ChemStation

Volume Inj. : 1 µl  
 Signal #1 Phase : ZB-MR1 Signal #2 Phase: ZB-MR2  
 Signal #1 Info : 30M x 0.32mm x0.5 Signal #2 Info : 30M x 0.32mm x 0.25µm

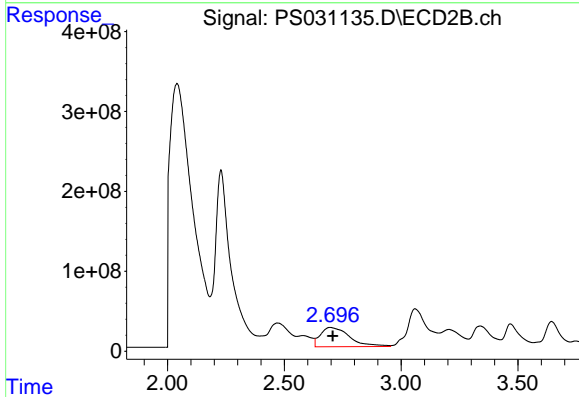




#1 Dalapon

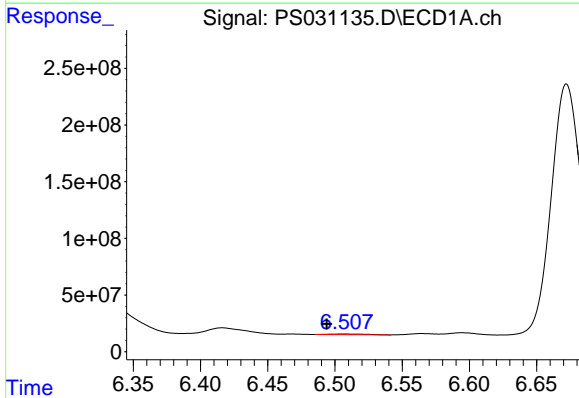
R.T.: 2.672 min  
 Delta R.T.: -0.026 min  
 Response: 1903667577  
 Conc: 312.50 ng/ml

Instrument :  
 ECD\_S  
 ClientSampleId :  
 TP-79



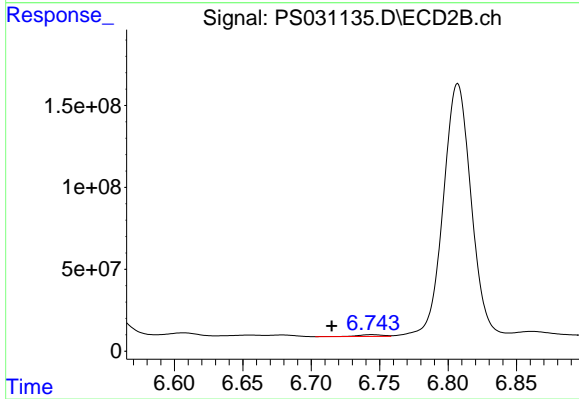
#1 Dalapon

R.T.: 2.696 min  
 Delta R.T.: -0.012 min  
 Response: 2097166193  
 Conc: 737.70 ng/ml



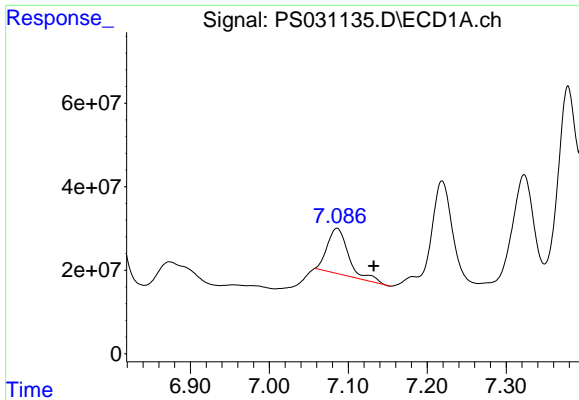
#2 3,5-DICHLOROBENZOIC ACID

R.T.: 6.507 min  
 Delta R.T.: 0.013 min  
 Response: 10582857  
 Conc: 2.02 ng/ml



#2 3,5-DICHLOROBENZOIC ACID

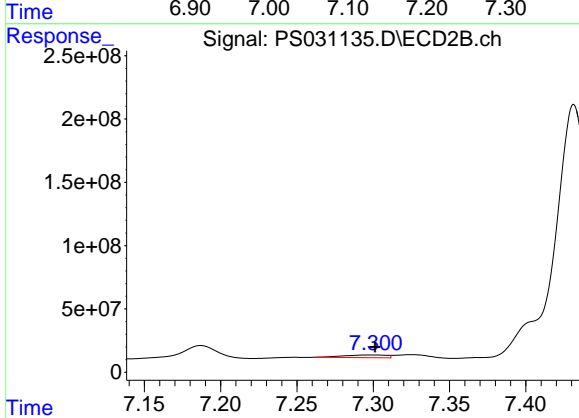
R.T.: 6.744 min  
 Delta R.T.: 0.029 min  
 Response: 13588517  
 Conc: 8.76 ng/ml



#3 4-Nitrophenol

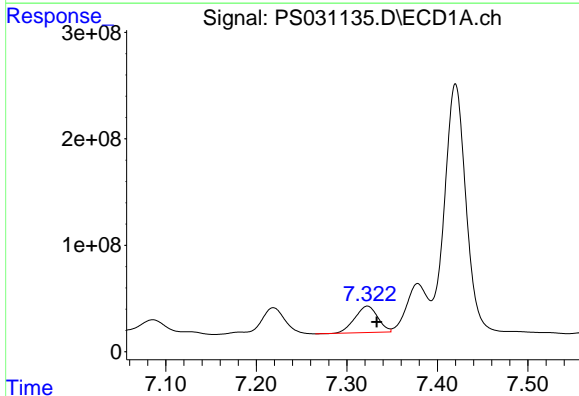
R.T.: 7.086 min  
 Delta R.T.: -0.047 min  
 Response: 203611491  
 Conc: 150.82 ng/ml

Instrument :  
 ECD\_S  
 ClientSampleId :  
 TP-79



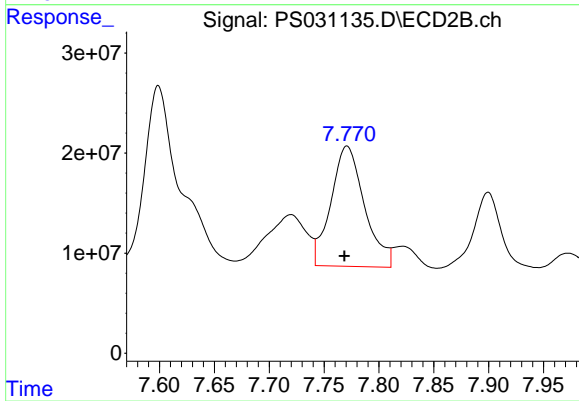
#3 4-Nitrophenol

R.T.: 7.299 min  
 Delta R.T.: -0.003 min  
 Response: 42283882  
 Conc: 24.25 ng/ml



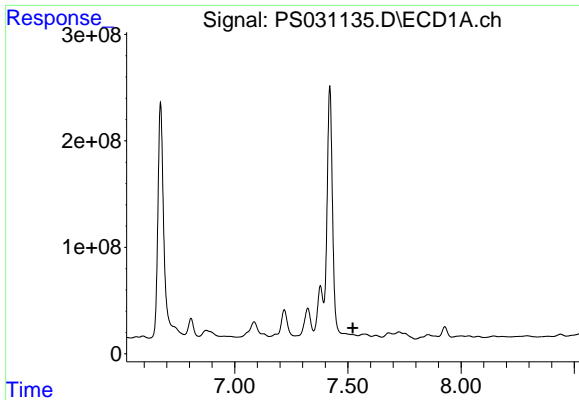
#4 2,4-DCAA

R.T.: 7.323 min  
 Delta R.T.: -0.010 min  
 Response: 439337691  
 Conc: 111.08 ng/ml



#4 2,4-DCAA

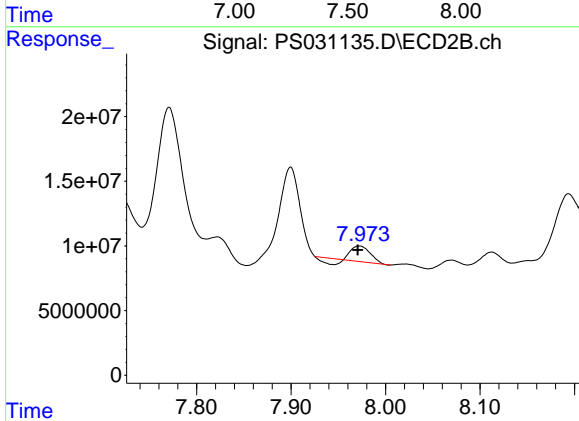
R.T.: 7.771 min  
 Delta R.T.: 0.002 min  
 Response: 256239518  
 Conc: 247.33 ng/ml



#5 DICAMBA

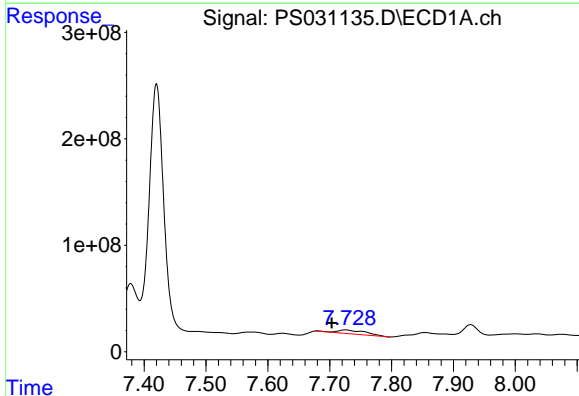
R.T.: 7.485 min  
 Delta R.T.: -0.037 min  
 Response: -8049957  
 Conc: N.D.

Instrument :  
 ECD\_S  
 ClientSampleId :  
 TP-79



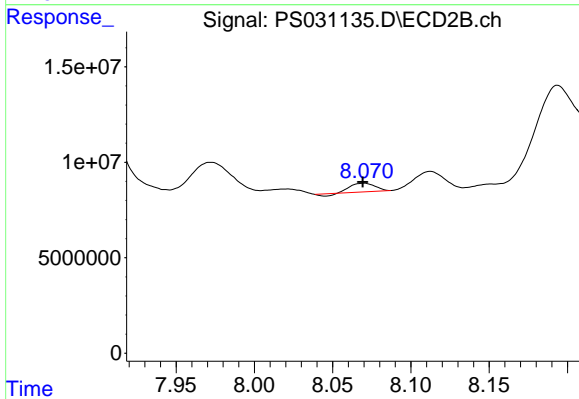
#5 DICAMBA

R.T.: 7.972 min  
 Delta R.T.: 0.002 min  
 Response: 11742549  
 Conc: 1.81 ng/ml



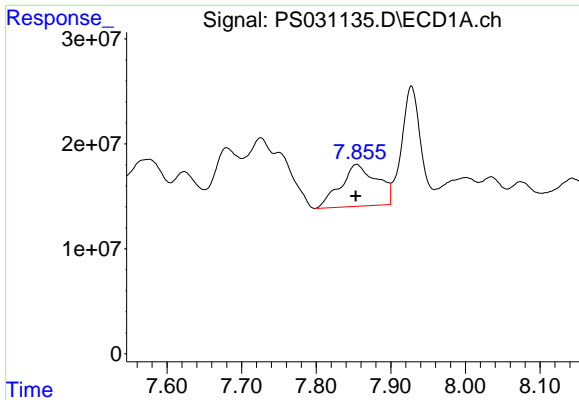
#6 MCPP

R.T.: 7.726 min  
 Delta R.T.: 0.023 min  
 Response: 113996698  
 Conc: 12.39 ug/ml



#6 MCPP

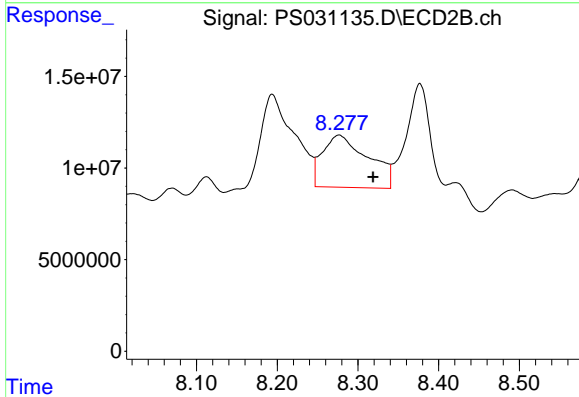
R.T.: 8.070 min  
 Delta R.T.: 0.000 min  
 Response: 4525578  
 Conc: 2.12 ug/ml



#7 MCPA

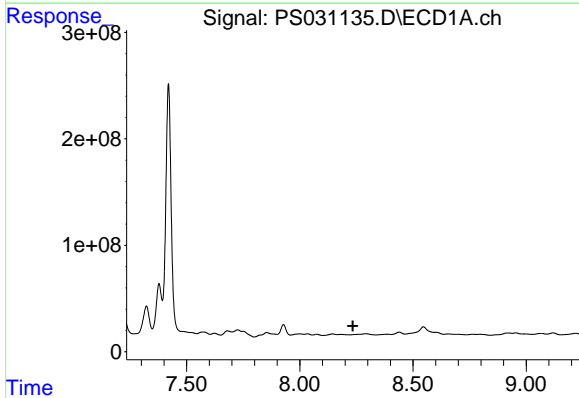
R.T.: 7.854 min  
 Delta R.T.: 0.001 min  
 Response: 135261682  
 Conc: 12.40 ug/ml

Instrument :  
 ECD\_S  
 ClientSampleId :  
 TP-79



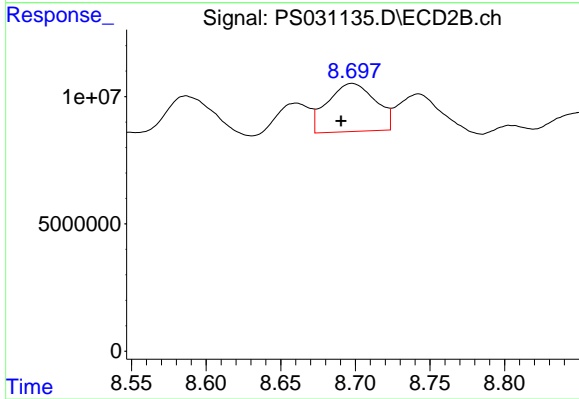
#7 MCPA

R.T.: 8.277 min  
 Delta R.T.: -0.042 min  
 Response: 111979225  
 Conc: 34.93 ug/ml



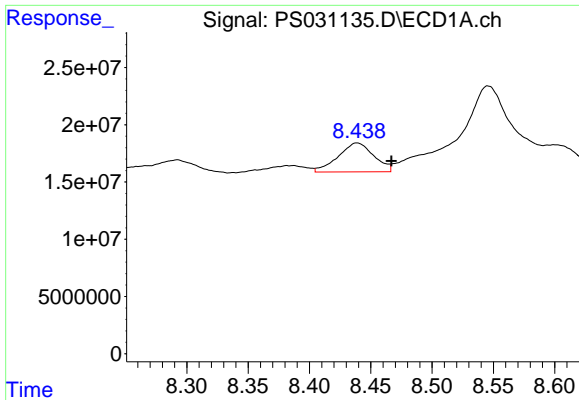
#8 DICHLORPROP

R.T.: 0.000 min  
 Exp R.T. : 8.235 min  
 Response: 0  
 Conc: N.D.



#8 DICHLORPROP

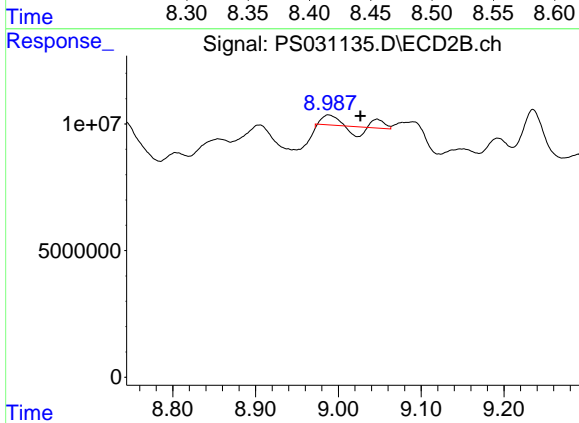
R.T.: 8.698 min  
 Delta R.T.: 0.007 min  
 Response: 42226446  
 Conc: 27.79 ng/ml



#9 2,4-D

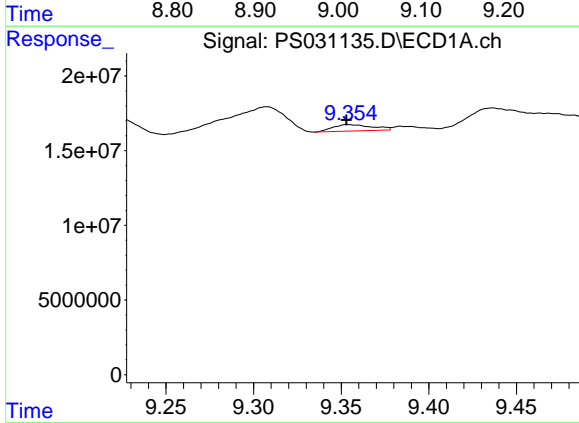
R.T.: 8.439 min  
 Delta R.T.: -0.028 min  
 Response: 50980181  
 Conc: 16.56 ng/ml

Instrument :  
 ECD\_S  
 ClientSampleId :  
 TP-79



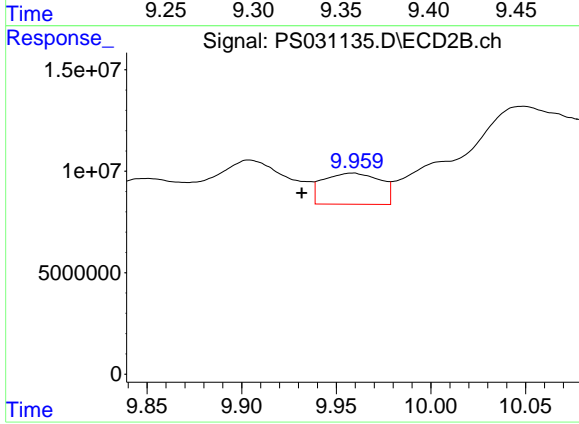
#9 2,4-D

R.T.: 9.047 min  
 Delta R.T.: 0.020 min  
 Response: 1801995  
 Conc: 1.06 ng/ml



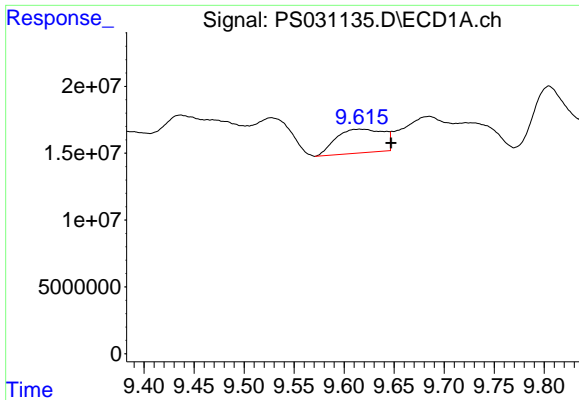
#11 2,4,5-TP (SILVEX)

R.T.: 9.355 min  
 Delta R.T.: 0.002 min  
 Response: 6788824  
 Conc: N.D.



#11 2,4,5-TP (SILVEX)

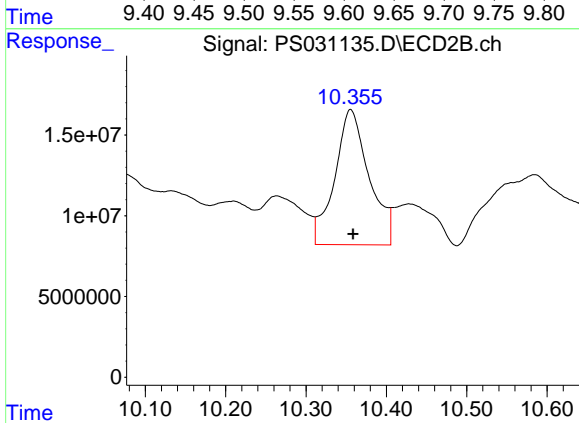
R.T.: 9.958 min  
 Delta R.T.: 0.027 min  
 Response: 32119667  
 Conc: 2.19 ng/ml



#12 2,4,5-T

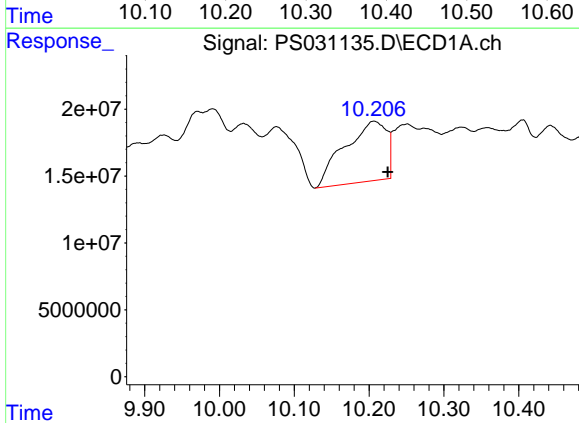
R.T.: 9.616 min  
 Delta R.T.: -0.031 min  
 Response: 58672138  
 Conc: 3.86 ng/ml

Instrument :  
 ECD\_S  
 ClientSampleId :  
 TP-79



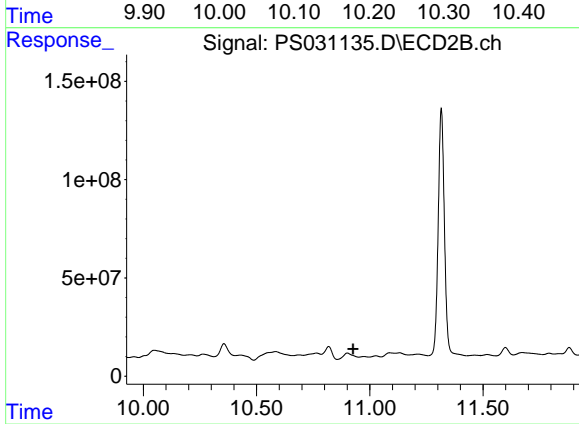
#12 2,4,5-T

R.T.: 10.356 min  
 Delta R.T.: -0.003 min  
 Response: 249085928  
 Conc: 17.80 ng/ml



#13 2,4-DB

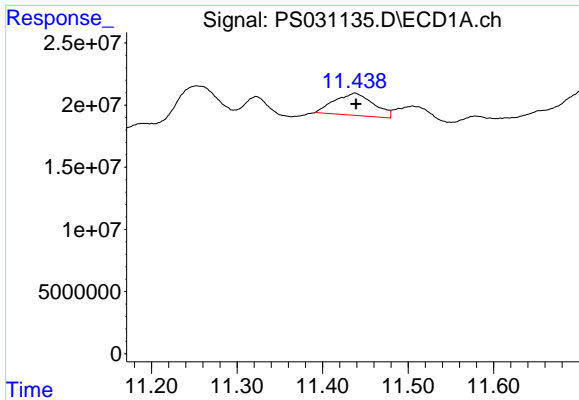
R.T.: 10.207 min  
 Delta R.T.: -0.018 min  
 Response: 174624407  
 Conc: 80.44 ng/ml



#13 2,4-DB

R.T.: 10.901 min  
 Delta R.T.: -0.025 min  
 Response: -65935226  
 Conc: N.D.

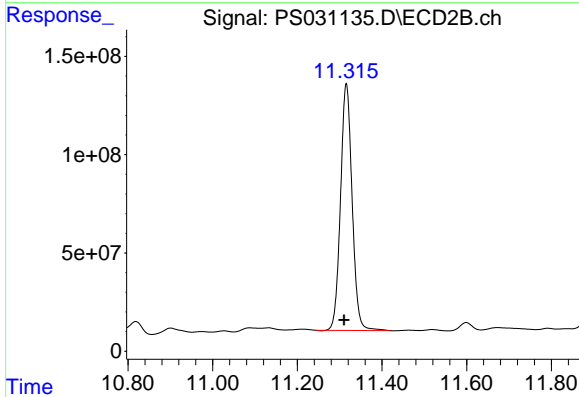




#14 DINOSEB

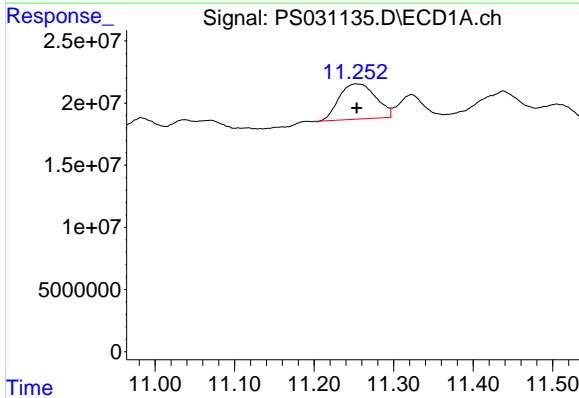
R.T.: 11.438 min  
 Delta R.T.: -0.001 min  
 Response: 56496903  
 Conc: 4.29 ng/ml

Instrument :  
 ECD\_S  
 ClientSampleId :  
 TP-79



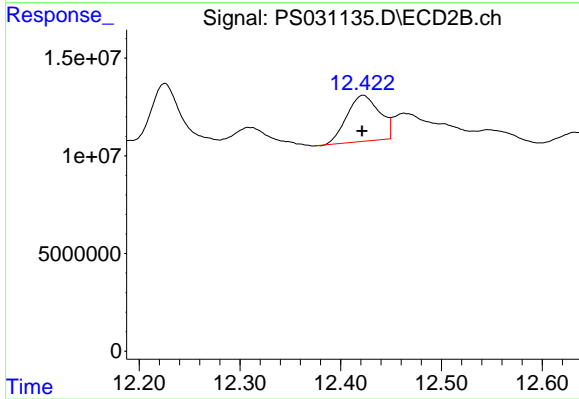
#14 DINOSEB

R.T.: 11.316 min  
 Delta R.T.: 0.005 min  
 Response: 2386666302  
 Conc: 210.25 ng/ml



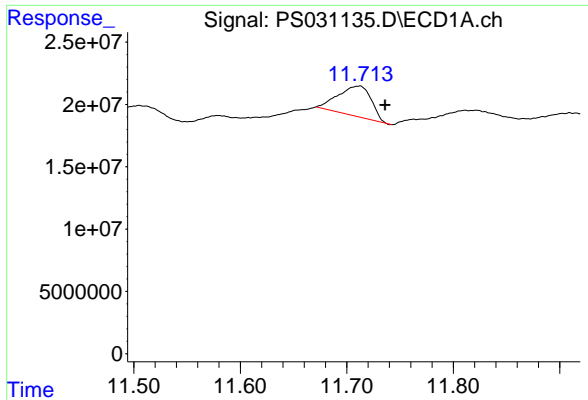
#15 Picloram

R.T.: 11.254 min  
 Delta R.T.: 0.000 min  
 Response: 91158397  
 Conc: 6.26 ng/ml



#15 Picloram

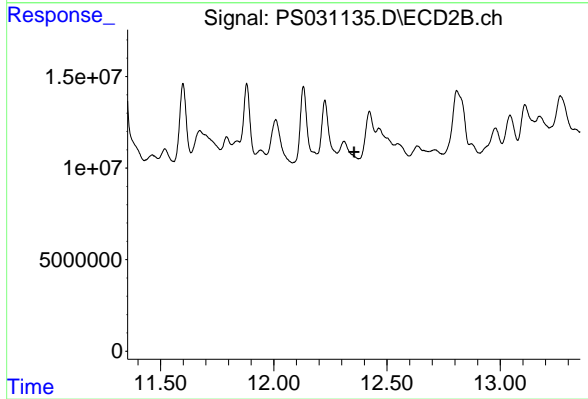
R.T.: 12.422 min  
 Delta R.T.: 0.001 min  
 Response: 53050272  
 Conc: 2.26 ng/ml



#16 DCPA

R.T.: 11.711 min  
Delta R.T.: -0.025 min  
Response: 52208186  
Conc: 2.18 ng/ml

Instrument :  
ECD\_S  
ClientSampleId :  
TP-79



#16 DCPA

R.T.: 12.310 min  
Delta R.T.: -0.044 min  
Response: -54988246  
Conc: N.D.