

Data Path : Z:\pestpcbsrv\HPCHEM1\ECD\_S\Data\PS071825\  
 Data File : PS031136.D  
 Signal(s) : Signal #1: ECD1A.ch Signal #2: ECD2B.ch  
 Acq On : 18 Jul 2025 17:45  
 Operator : AR\AJ  
 Sample : Q2529-04  
 Misc :  
 ALS Vial : 11 Sample Multiplier: 1

Instrument :  
 ECD\_S  
 ClientSampleId :

Integration File signal 1: autoint1.e  
 Integration File signal 2: autoint2.e  
 Quant Time: Jul 18 23:20:26 2025  
 Quant Method : Z:\pestpcbsrv\HPCHEM1\ECD\_S\Method\PS071125.M  
 Quant Title : 8080.M  
 QLast Update : Mon Jul 14 05:51:06 2025  
 Response via : Initial Calibration  
 Integrator: ChemStation

Volume Inj. : 1 µl  
 Signal #1 Phase : ZB-MR2 Signal #2 Phase: ZB-MR2  
 Signal #1 Info : 30M x 0.32mm x0.5 Signal #2 Info : 30M x 0.32mm x 0.25µm

Compound	RT#1	RT#2	Resp#1	Resp#2	ng/ml	ng/ml
-----						
System Monitoring Compounds						
4) S 2,4-DCAA	7.322	7.774	550.3E6	401.2E6	139.139	387.282 #
Target Compounds						
1) T Dalapon	2.672f	2.698	2092.6E6	2534.1E6	343.511	891.389 #
2) T 3,5-DICHL...	6.503	6.746f	4177457	16138600	<MDL	10.410 #
3) T 4-Nitroph...	7.088f	7.326	173.2E6	91483401	128.278	52.459 #
5) T DICAMBA	7.526	7.972	3891534	17726218	<MDL	2.737 #
6) T MCPP	7.725	8.068	45575001	12390562	4.953	5.796
7) T MCPA	7.857	8.280f	141.5E6	125.1E6	12.971	39.036 #
8) T DICHLORPROP	0.000	8.696	0	61002605	N.D.	40.153
9) T 2,4-D	8.441f	9.047	45098576	-8542252	14.650	N.D. #
10) T Pentachlo...	8.762	9.549	16649522	25229950	<MDL	<MDL #
11) T 2,4,5-TP ...	9.355	9.957f	7718923	50611060	<MDL	3.449 #
12) T 2,4,5-T	9.616f	10.356	56874060	330.1E6	3.738	23.593 #
13) T 2,4-DB	10.207	10.901	201.2E6	-65186061	92.703	N.D. #
14) T DINOSEB	11.440	11.316	40552802	2746.7E6	3.076	241.966 #
15) T Picloram	11.248	12.422	120.1E6	64817565	8.245	2.760 #
16) T DCPA	11.712	12.309f	80434610	-36558421	3.360	N.D. #
-----						

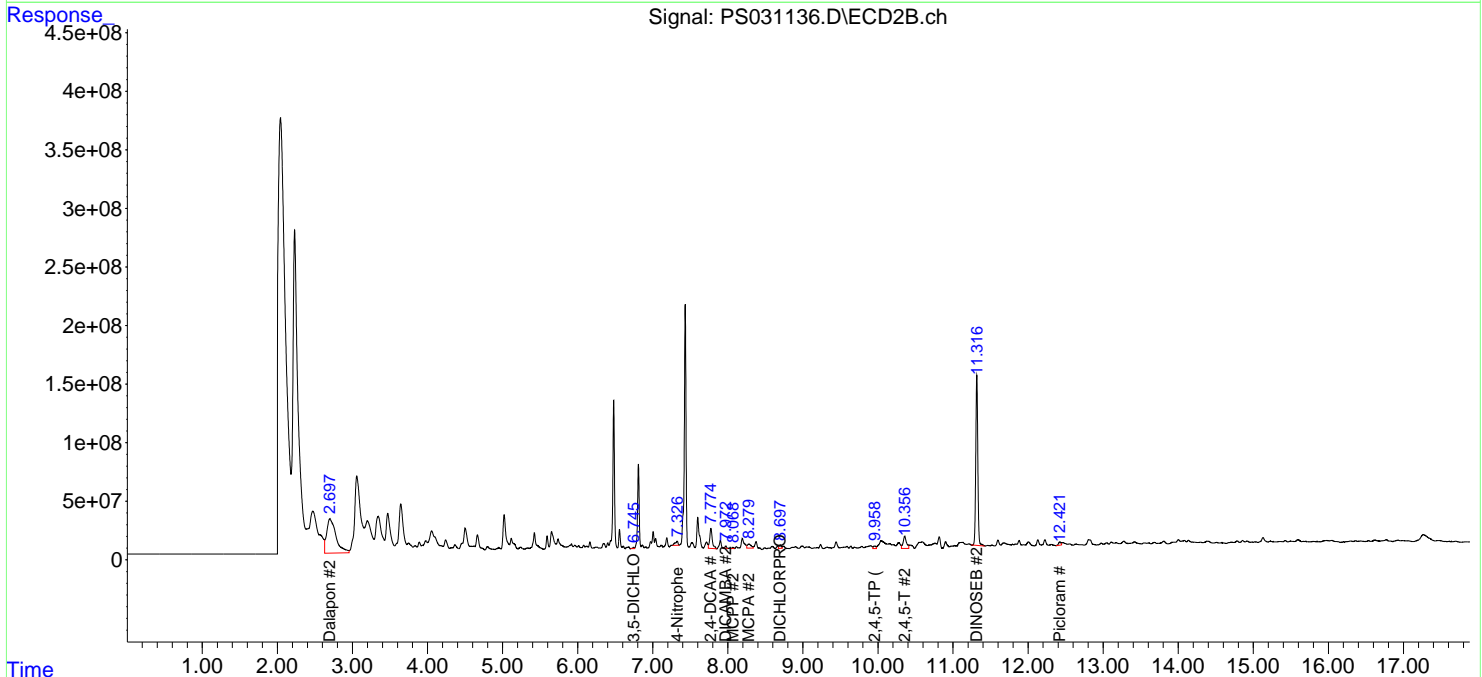
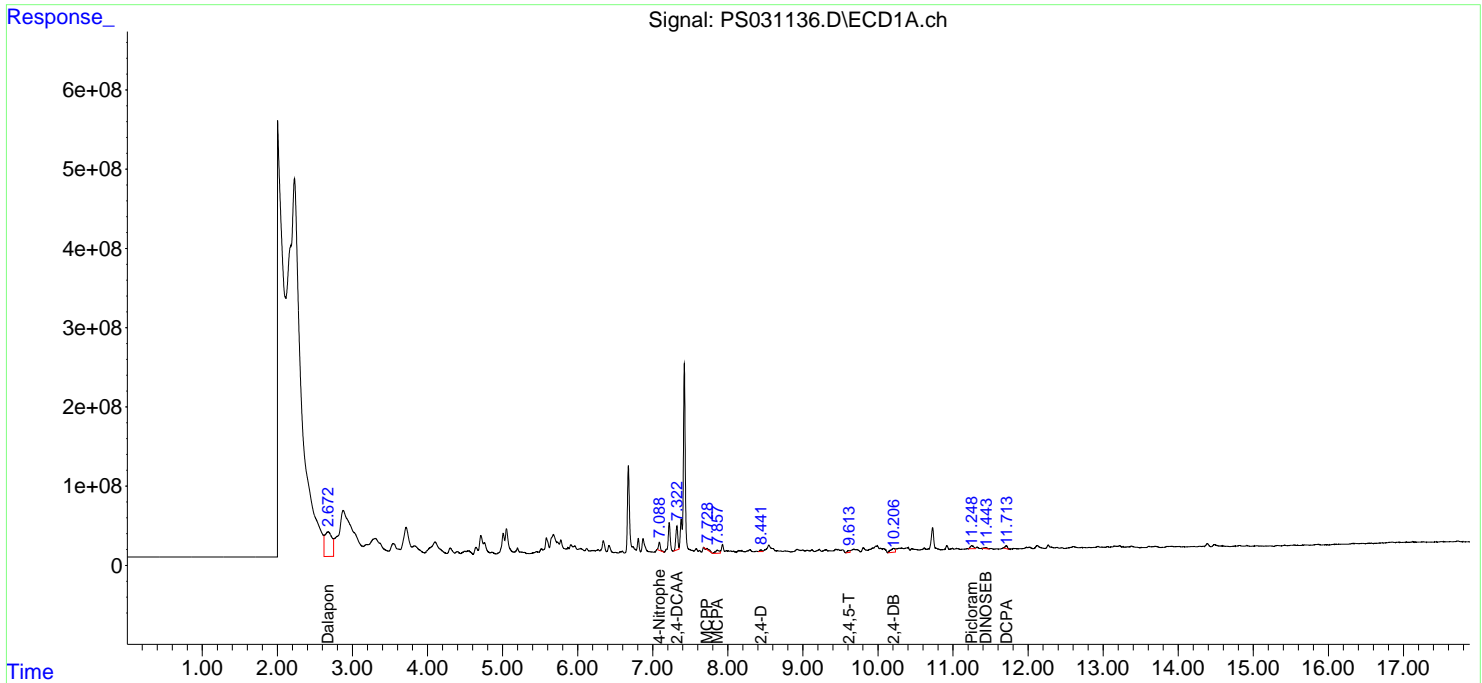
(f)=RT Delta > 1/2 Window (#)=Amounts differ by > 25% (m)=manual int.

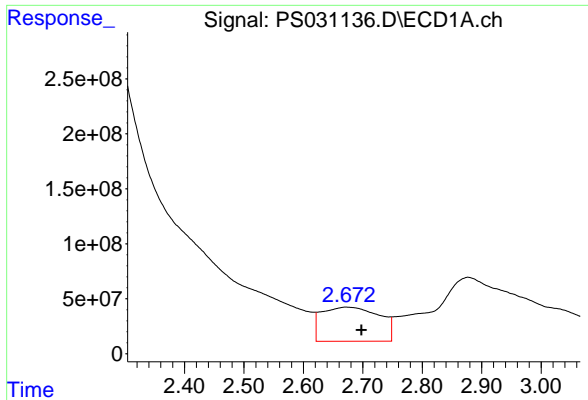
Data Path : Z:\pestpcbsrv\HPCHEM1\ECD\_S\Data\PS071825\  
 Data File : PS031136.D  
 Signal(s) : Signal #1: ECD1A.ch Signal #2: ECD2B.ch  
 Acq On : 18 Jul 2025 17:45  
 Operator : AR\AJ  
 Sample : Q2529-04  
 Misc :  
 ALS Vial : 11 Sample Multiplier: 1

Instrument :  
 ECD\_S  
 ClientSampleId :

Integration File signal 1: autoint1.e  
 Integration File signal 2: autoint2.e  
 Quant Time: Jul 18 23:20:26 2025  
 Quant Method : Z:\pestpcbsrv\HPCHEM1\ECD\_S\Method\PS071125.M  
 Quant Title : 8080.M  
 QLast Update : Mon Jul 14 05:51:06 2025  
 Response via : Initial Calibration  
 Integrator: ChemStation

Volume Inj. : 1 µl  
 Signal #1 Phase : ZB-MR1 Signal #2 Phase: ZB-MR2  
 Signal #1 Info : 30M x 0.32mm x0.5 Signal #2 Info : 30M x 0.32mm x 0.25µm

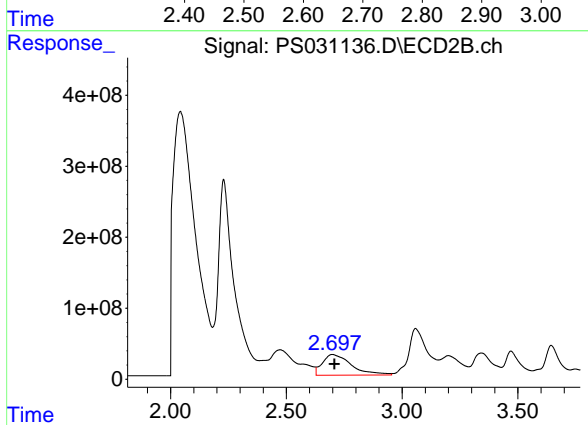




#1 Dalapon

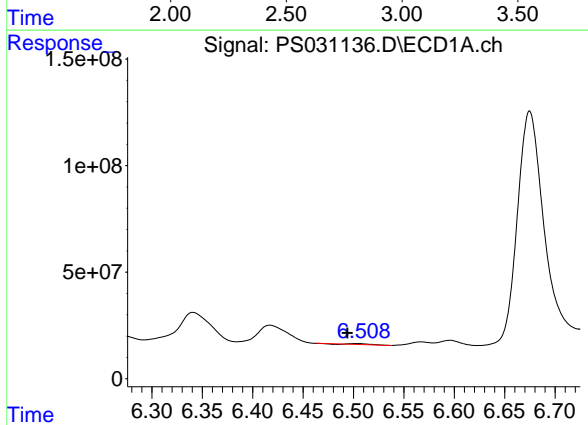
R.T.: 2.672 min  
 Delta R.T.: -0.026 min  
 Response: 2092576763  
 Conc: 343.51 ng/ml

Instrument :  
 ECD\_S  
 ClientSampleId :



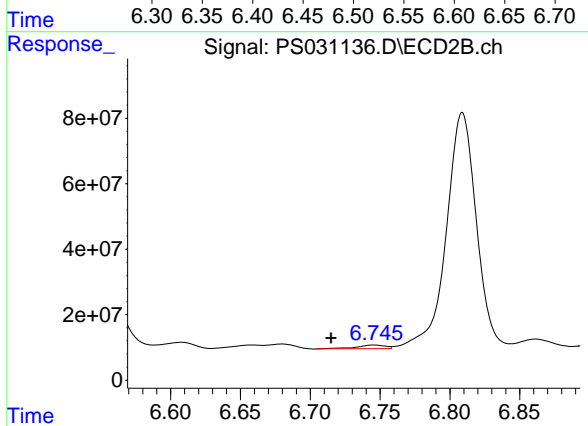
#1 Dalapon

R.T.: 2.698 min  
 Delta R.T.: -0.010 min  
 Response: 2534092068  
 Conc: 891.39 ng/ml



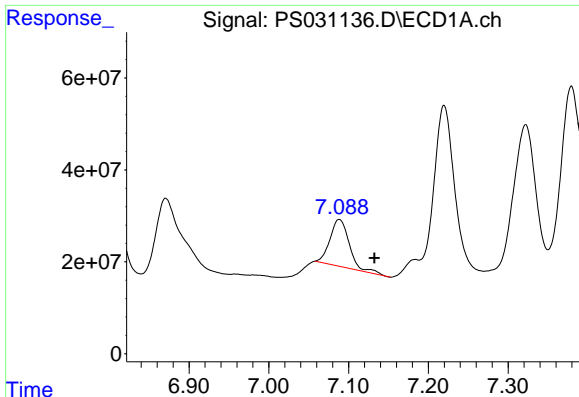
#2 3,5-DICHLOROBENZOIC ACID

R.T.: 6.503 min  
 Delta R.T.: 0.009 min  
 Response: 4177457  
 Conc: N.D.



#2 3,5-DICHLOROBENZOIC ACID

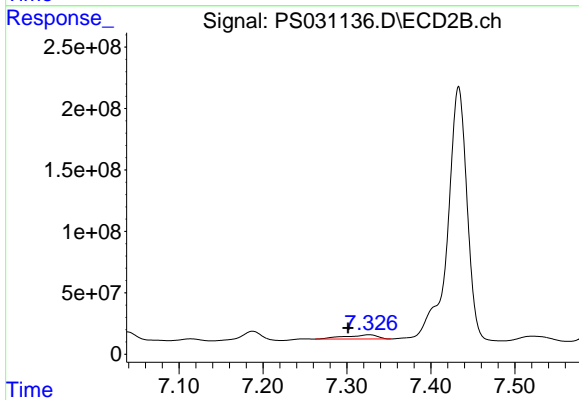
R.T.: 6.746 min  
 Delta R.T.: 0.031 min  
 Response: 16138600  
 Conc: 10.41 ng/ml



#3 4-Nitrophenol

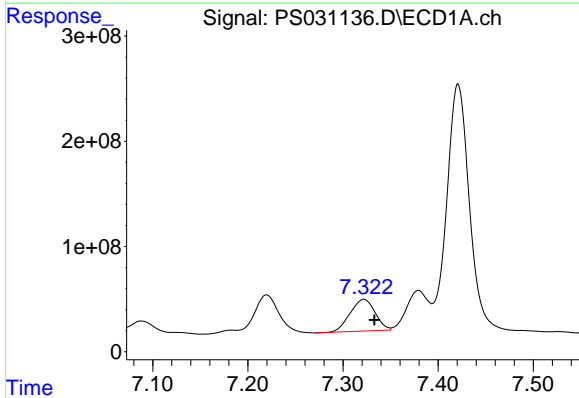
R.T.: 7.088 min  
 Delta R.T.: -0.044 min  
 Response: 173176813  
 Conc: 128.28 ng/ml

Instrument :  
 ECD\_S  
 ClientSampleId :



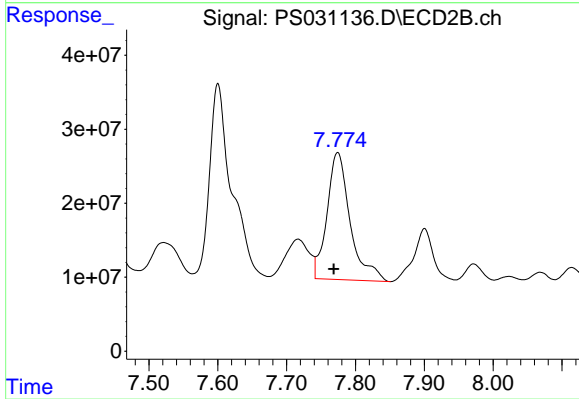
#3 4-Nitrophenol

R.T.: 7.326 min  
 Delta R.T.: 0.025 min  
 Response: 91483401  
 Conc: 52.46 ng/ml



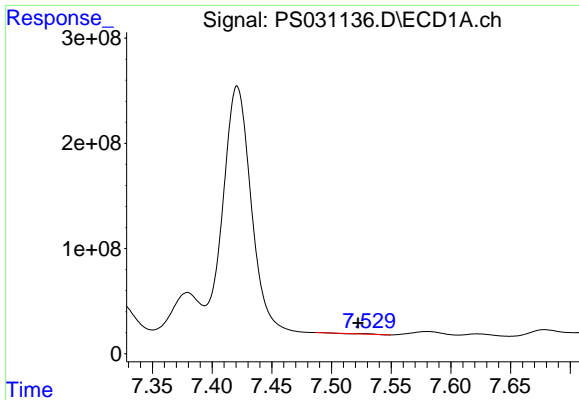
#4 2,4-DCAA

R.T.: 7.322 min  
 Delta R.T.: -0.011 min  
 Response: 550305923  
 Conc: 139.14 ng/ml



#4 2,4-DCAA

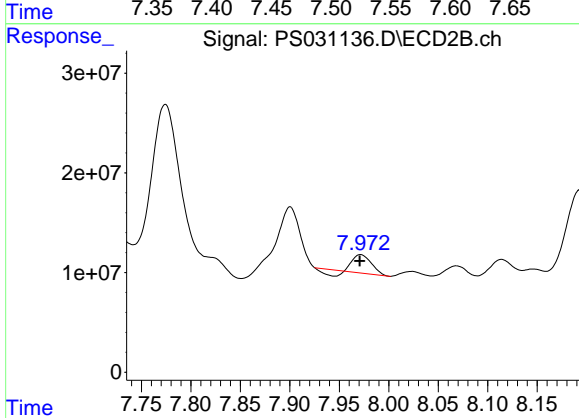
R.T.: 7.774 min  
 Delta R.T.: 0.006 min  
 Response: 401236825  
 Conc: 387.28 ng/ml



#5 DICAMBA

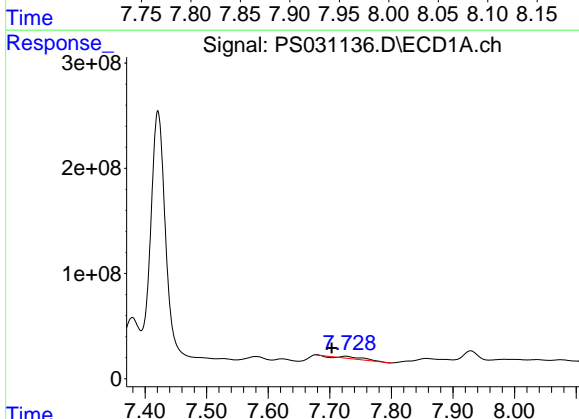
R.T.: 7.526 min  
 Delta R.T.: 0.003 min  
 Response: 3891534  
 Conc: N.D.

Instrument :  
 ECD\_S  
 ClientSampleId :



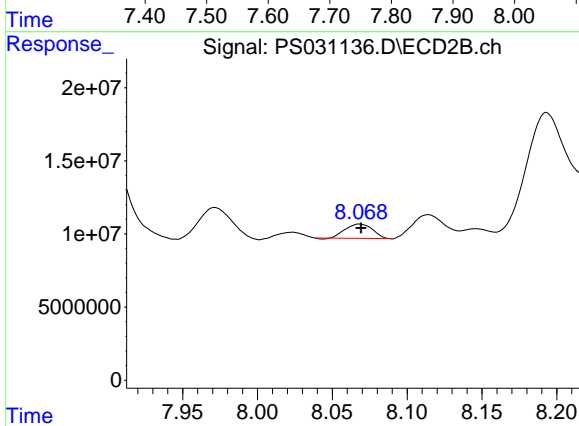
#5 DICAMBA

R.T.: 7.972 min  
 Delta R.T.: 0.001 min  
 Response: 17726218  
 Conc: 2.74 ng/ml



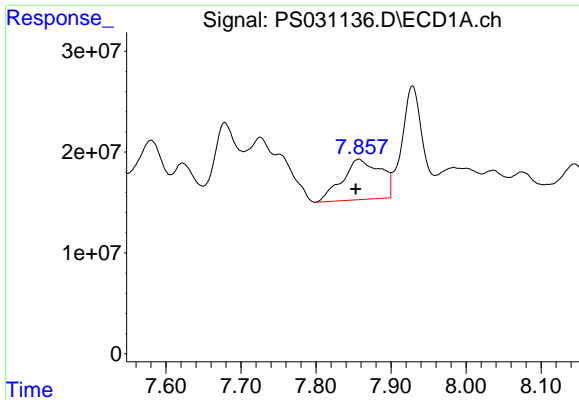
#6 MCPP

R.T.: 7.725 min  
 Delta R.T.: 0.022 min  
 Response: 45575001  
 Conc: 4.95 ug/ml



#6 MCPP

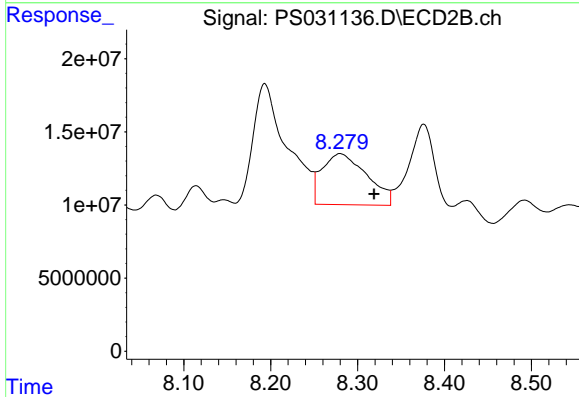
R.T.: 8.068 min  
 Delta R.T.: 0.000 min  
 Response: 12390562  
 Conc: 5.80 ug/ml



#7 MCPA

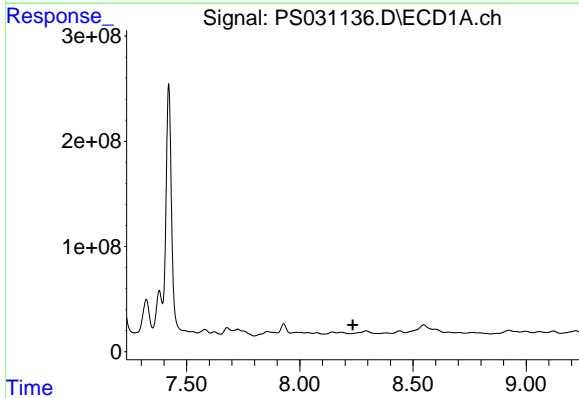
R.T.: 7.857 min  
 Delta R.T.: 0.004 min  
 Response: 141466862  
 Conc: 12.97 ug/ml

Instrument :  
 ECD\_S  
 ClientSampleId :



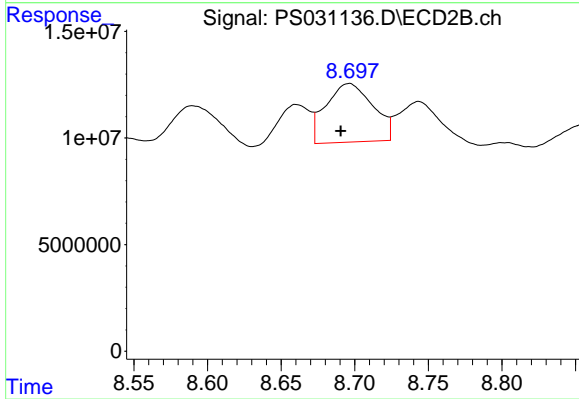
#7 MCPA

R.T.: 8.280 min  
 Delta R.T.: -0.039 min  
 Response: 125137685  
 Conc: 39.04 ug/ml



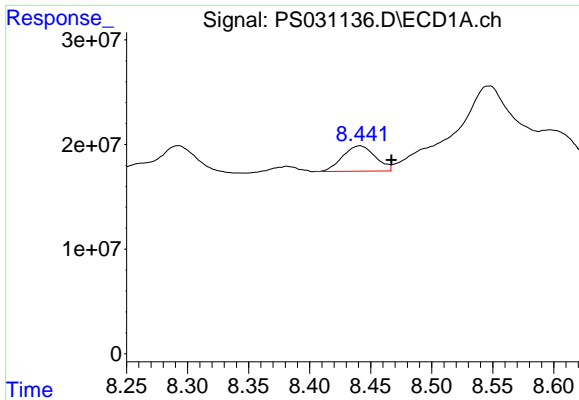
#8 DICHLORPROP

R.T.: 0.000 min  
 Exp R.T. : 8.235 min  
 Response: 0  
 Conc: N.D.



#8 DICHLORPROP

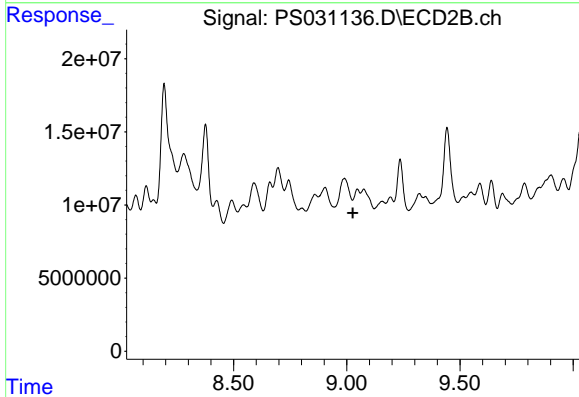
R.T.: 8.696 min  
 Delta R.T.: 0.006 min  
 Response: 61002605  
 Conc: 40.15 ng/ml



#9 2,4-D

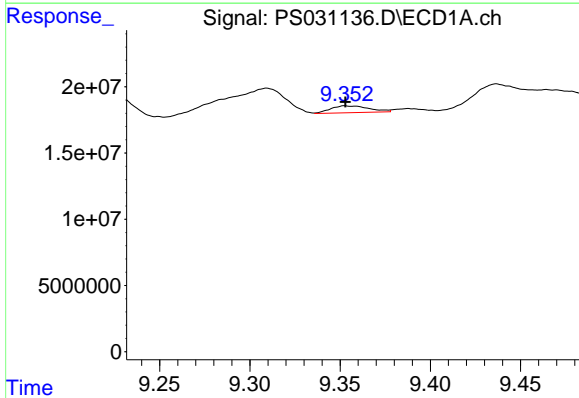
R.T.: 8.441 min  
 Delta R.T.: -0.026 min  
 Response: 45098576  
 Conc: 14.65 ng/ml

Instrument :  
 ECD\_S  
 ClientSampleId :



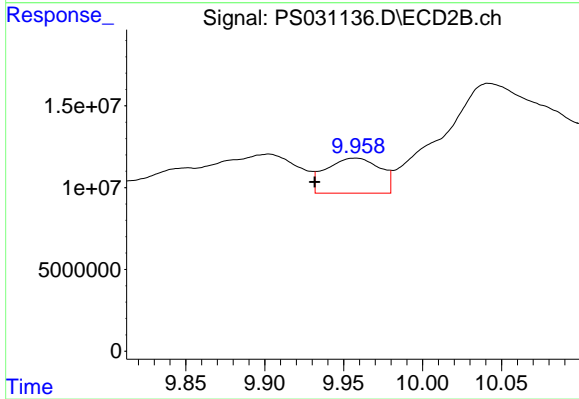
#9 2,4-D

R.T.: 9.047 min  
 Delta R.T.: 0.020 min  
 Response: -8542252  
 Conc: N.D.



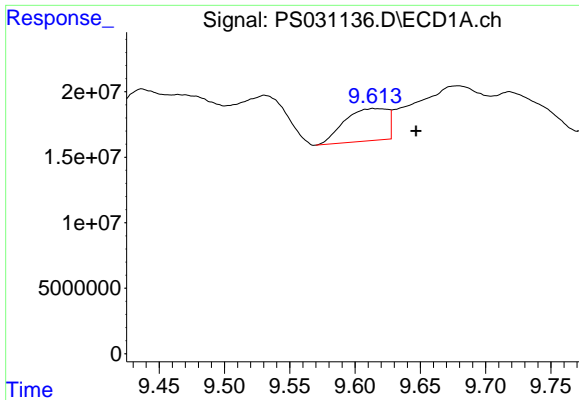
#11 2,4,5-TP (SILVEX)

R.T.: 9.355 min  
 Delta R.T.: 0.002 min  
 Response: 7718923  
 Conc: N.D.



#11 2,4,5-TP (SILVEX)

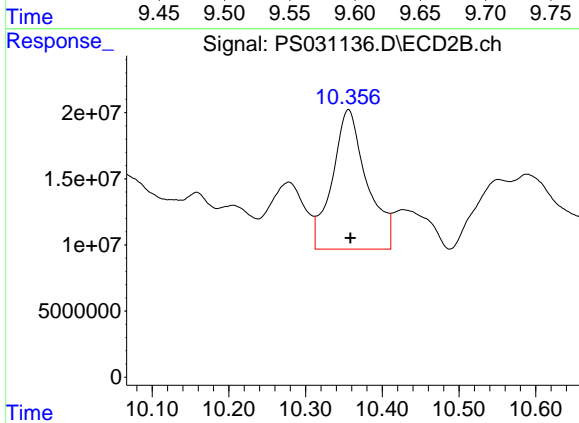
R.T.: 9.957 min  
 Delta R.T.: 0.026 min  
 Response: 50611060  
 Conc: 3.45 ng/ml



#12 2,4,5-T

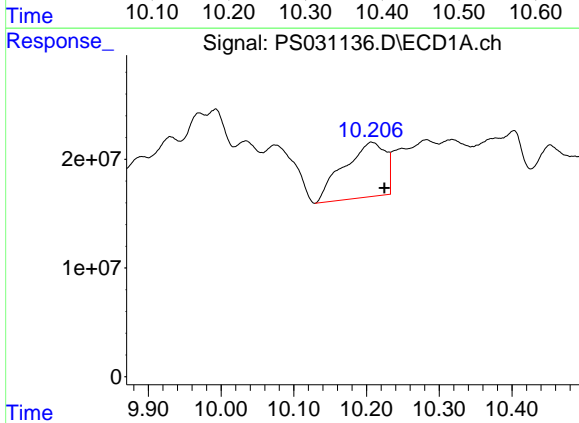
R.T.: 9.616 min  
 Delta R.T.: -0.031 min  
 Response: 56874060  
 Conc: 3.74 ng/ml

Instrument :  
 ECD\_S  
 ClientSampleId :



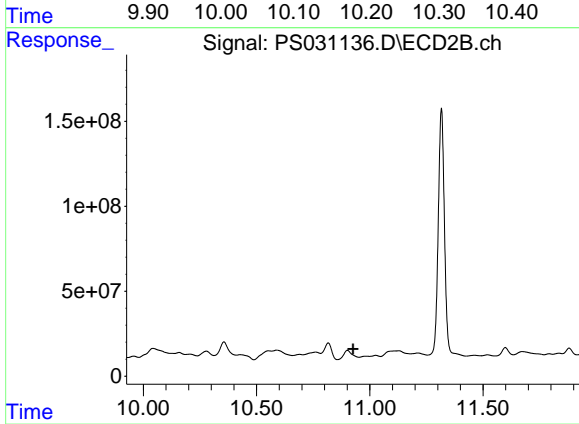
#12 2,4,5-T

R.T.: 10.356 min  
 Delta R.T.: -0.003 min  
 Response: 330107005  
 Conc: 23.59 ng/ml



#13 2,4-DB

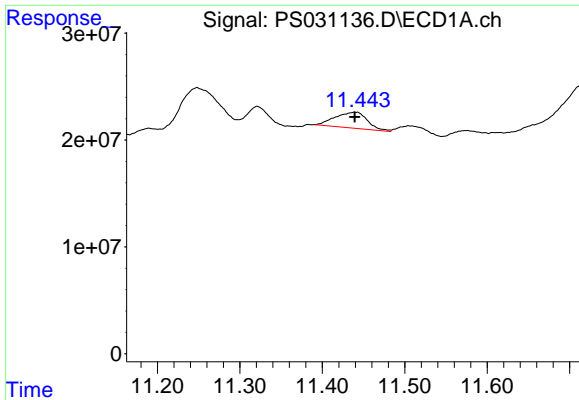
R.T.: 10.207 min  
 Delta R.T.: -0.018 min  
 Response: 201239057  
 Conc: 92.70 ng/ml



#13 2,4-DB

R.T.: 10.901 min  
 Delta R.T.: -0.025 min  
 Response: -65186061  
 Conc: N.D.

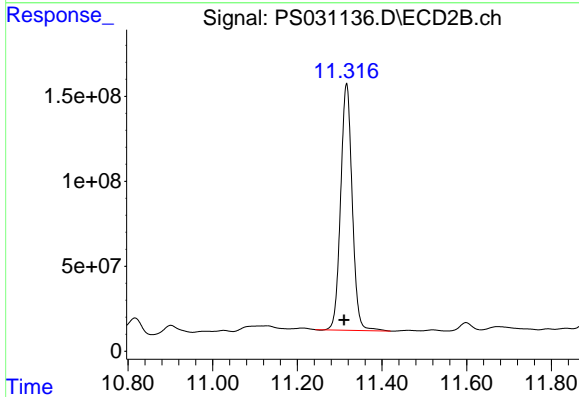




#14 DINOSEB

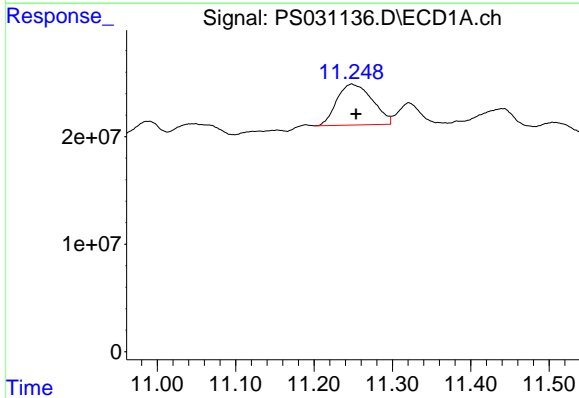
R.T.: 11.440 min  
 Delta R.T.: 0.000 min  
 Response: 40552802  
 Conc: 3.08 ng/ml

Instrument :  
 ECD\_S  
 ClientSampleId :



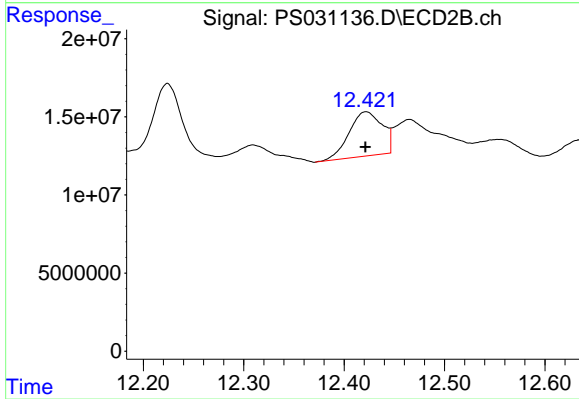
#14 DINOSEB

R.T.: 11.316 min  
 Delta R.T.: 0.006 min  
 Response: 2746679091  
 Conc: 241.97 ng/ml



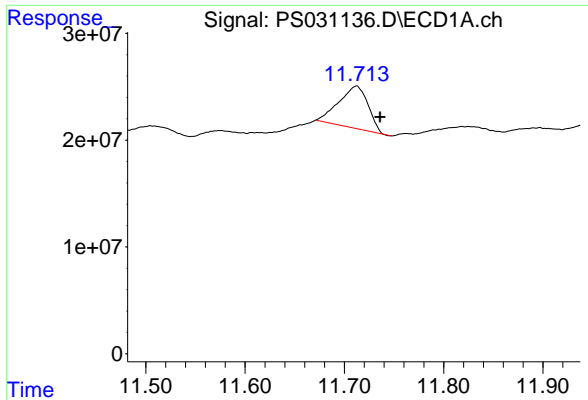
#15 Picloram

R.T.: 11.248 min  
 Delta R.T.: -0.006 min  
 Response: 120141303  
 Conc: 8.24 ng/ml



#15 Picloram

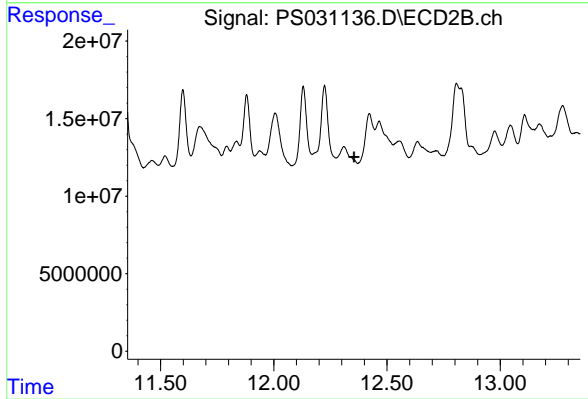
R.T.: 12.422 min  
 Delta R.T.: 0.000 min  
 Response: 64817565  
 Conc: 2.76 ng/ml



#16 DCPA

R.T.: 11.712 min  
 Delta R.T.: -0.024 min  
 Response: 80434610  
 Conc: 3.36 ng/ml

Instrument :  
 ECD\_S  
 ClientSampleId :



#16 DCPA

R.T.: 12.309 min  
 Delta R.T.: -0.045 min  
 Response: -36558421  
 Conc: N.D.