

Data Path : Z:\pestpcbsrv\HPCHEM1\ECD_S\Data\PS071825\
 Data File : PS031139.D
 Signal(s) : Signal #1: ECD1A.ch Signal #2: ECD2B.ch
 Acq On : 18 Jul 2025 18:57
 Operator : AR\AJ
 Sample : Q2529-07
 Misc :
 ALS Vial : 14 Sample Multiplier: 1

Instrument :
 ECD_S
 ClientSampleId :

Integration File signal 1: autoint1.e
 Integration File signal 2: autoint2.e
 Quant Time: Jul 18 23:21:17 2025
 Quant Method : Z:\pestpcbsrv\HPCHEM1\ECD_S\Method\PS071125.M
 Quant Title : 8080.M
 QLast Update : Mon Jul 14 05:51:06 2025
 Response via : Initial Calibration
 Integrator: ChemStation

Volume Inj. : 1 µl
 Signal #1 Phase : ZB-MR2 Signal #2 Phase: ZB-MR2
 Signal #1 Info : 30M x 0.32mm x0.5 Signal #2 Info : 30M x 0.32mm x 0.25µm

Compound	RT#1	RT#2	Resp#1	Resp#2	ng/ml	ng/ml

System Monitoring Compounds						
4) S 2,4-DCAA	7.318	7.774	648.7E6	277.8E6	164.005	268.137 #
Target Compounds						
1) T Dalapon	2.661f	2.701	1763.6E6	2377.3E6	289.501	836.243 #
2) T 3,5-DICHL...	6.503	6.685f	5482940	12241137	1.047	7.896 #
3) T 4-Nitroph...	7.091f	7.325	120.0E6	60855336	88.904	34.896 #
5) T DICAMBA	7.524	7.970	2342313	14937128	<MDL	2.306 #
6) T MCPP	0.000	8.066	0	4351819	N.D.	2.036
7) T MCPA	7.859	8.304	85863902	68251520	7.873	21.291 #
8) T DICHLORPROP	8.261f	8.695	16955313	39594637	4.979	26.062 #
9) T 2,4-D	8.440f	0.000	34361685	0	11.162	N.D. #
10) T Pentachlo...	8.785	9.540	9209706	8168944	<MDL	<MDL #
11) T 2,4,5-TP ...	9.358	9.905f	9143129	84969501	<MDL	5.790 #
12) T 2,4,5-T	9.615f	10.356	63654569	155.3E6	4.184	11.099 #
13) T 2,4-DB	10.202	10.901	121.5E6	-23352597	55.950	N.D. #
14) T DINOSEB	11.418	11.317	12425414	757.9E6	<MDL	66.766 #
15) T Picloram	11.256	12.422	74667296	37578316	5.124	1.600 #
16) T DCPA	11.713	12.311f	57706109	-34828087	2.411	N.D. #

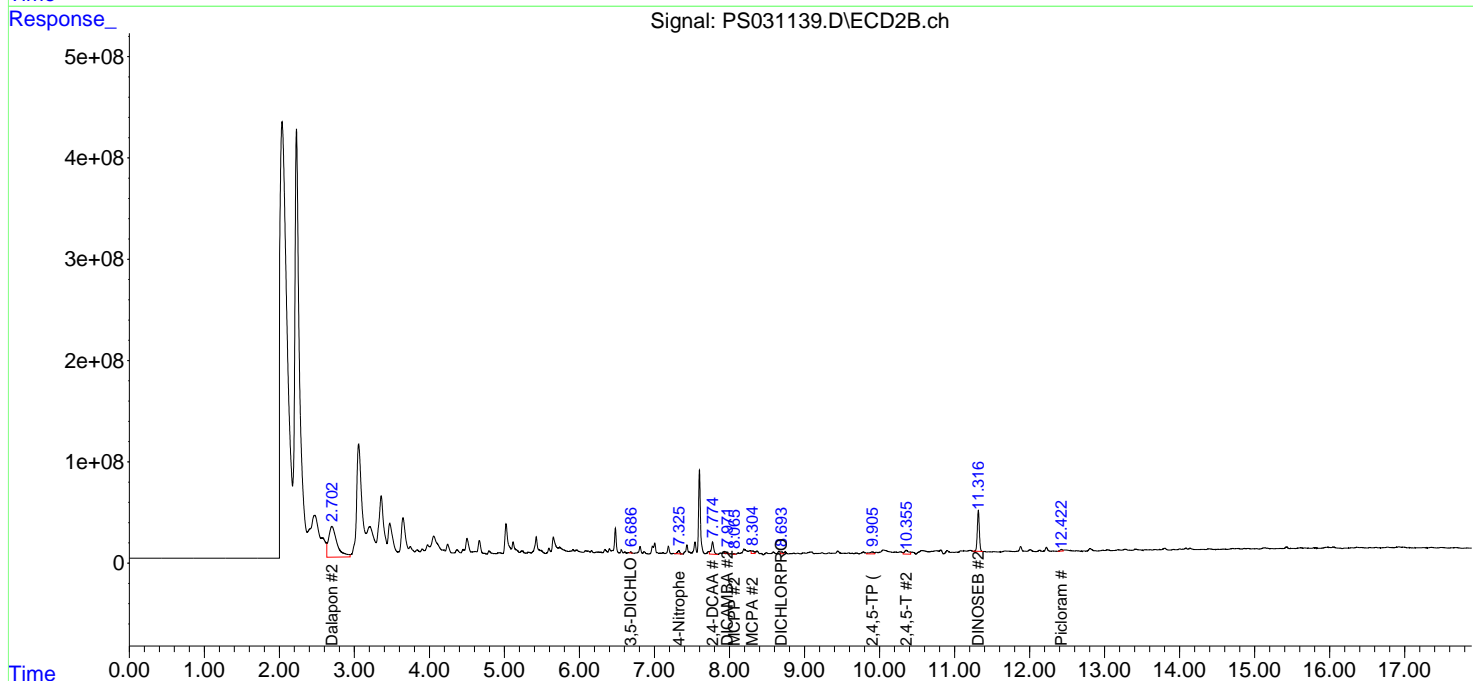
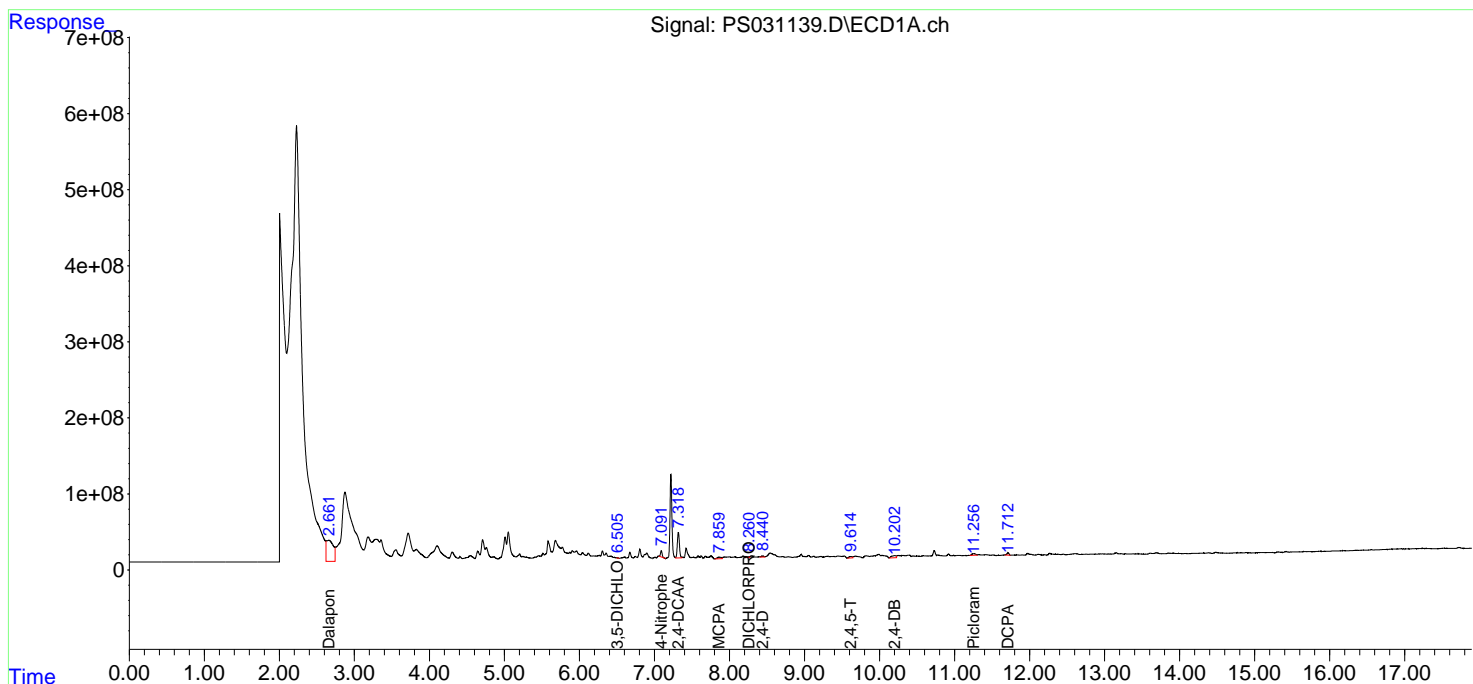
(f)=RT Delta > 1/2 Window (#)=Amounts differ by > 25% (m)=manual int.

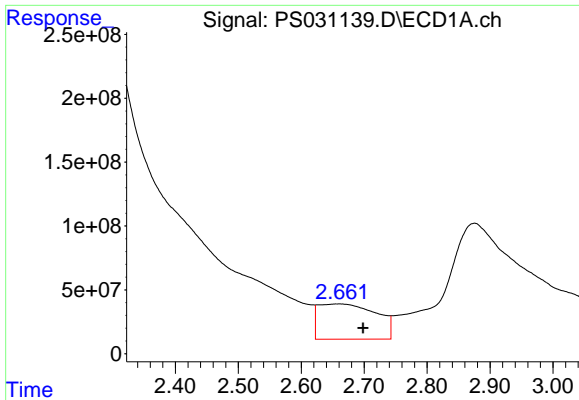
Data Path : Z:\pestpcbsrv\HPCHEM1\ECD_S\Data\PS071825\
 Data File : PS031139.D
 Signal(s) : Signal #1: ECD1A.ch Signal #2: ECD2B.ch
 Acq On : 18 Jul 2025 18:57
 Operator : AR\AJ
 Sample : Q2529-07
 Misc :
 ALS Vial : 14 Sample Multiplier: 1

Instrument :
 ECD_S
 ClientSampleId :

Integration File signal 1: autoint1.e
 Integration File signal 2: autoint2.e
 Quant Time: Jul 18 23:21:17 2025
 Quant Method : Z:\pestpcbsrv\HPCHEM1\ECD_S\Method\PS071125.M
 Quant Title : 8080.M
 QLast Update : Mon Jul 14 05:51:06 2025
 Response via : Initial Calibration
 Integrator: ChemStation

Volume Inj. : 1 µl
 Signal #1 Phase : ZB-MR1 Signal #2 Phase: ZB-MR2
 Signal #1 Info : 30M x 0.32mm x0.5 Signal #2 Info : 30M x 0.32mm x 0.25µm

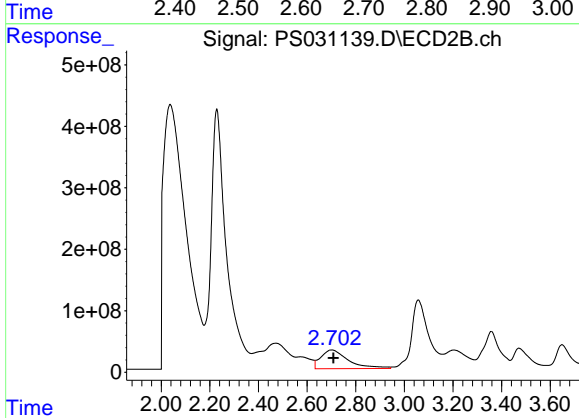




#1 Dalapon

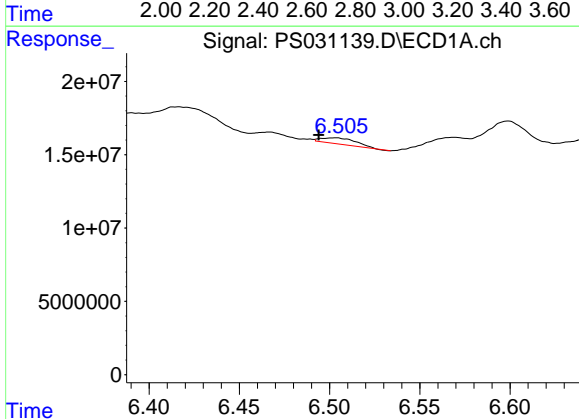
R.T.: 2.661 min
 Delta R.T.: -0.037 min
 Response: 1763559330
 Conc: 289.50 ng/ml

Instrument :
 ECD_S
 ClientSampleId :



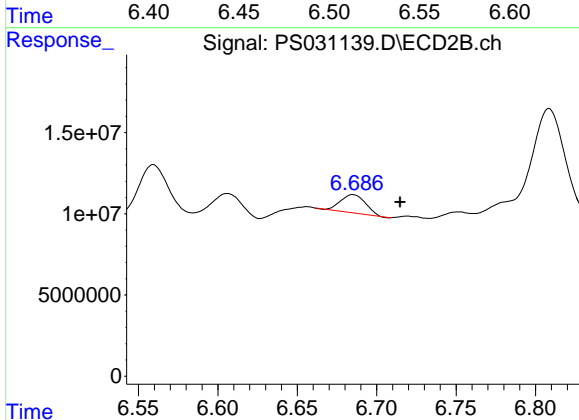
#1 Dalapon

R.T.: 2.701 min
 Delta R.T.: -0.007 min
 Response: 2377321461
 Conc: 836.24 ng/ml



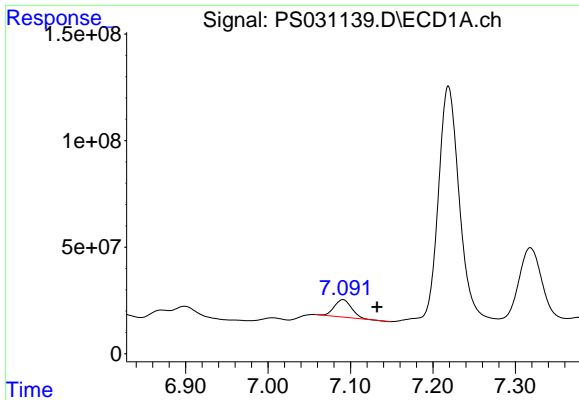
#2 3,5-DICHLOROBENZOIC ACID

R.T.: 6.503 min
 Delta R.T.: 0.009 min
 Response: 5482940
 Conc: 1.05 ng/ml



#2 3,5-DICHLOROBENZOIC ACID

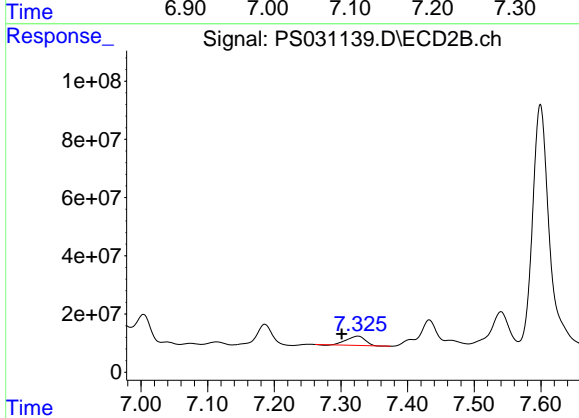
R.T.: 6.685 min
 Delta R.T.: -0.030 min
 Response: 12241137
 Conc: 7.90 ng/ml



#3 4-Nitrophenol

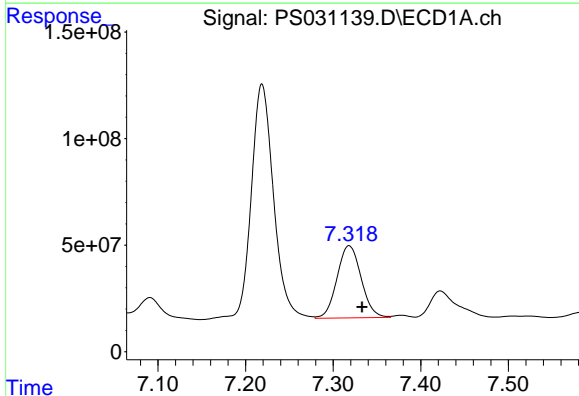
R.T.: 7.091 min
Delta R.T.: -0.041 min
Response: 120021509
Conc: 88.90 ng/ml

Instrument :
ECD_S
ClientSampleId :



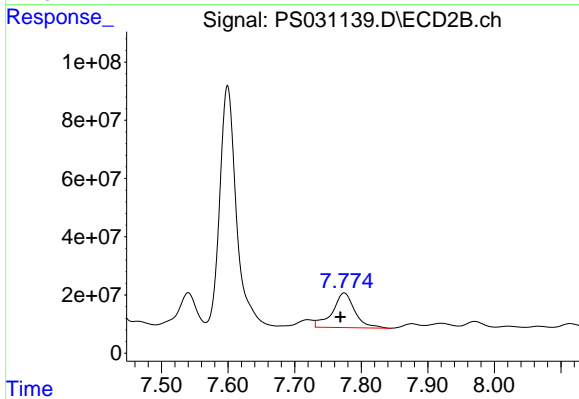
#3 4-Nitrophenol

R.T.: 7.325 min
Delta R.T.: 0.024 min
Response: 60855336
Conc: 34.90 ng/ml



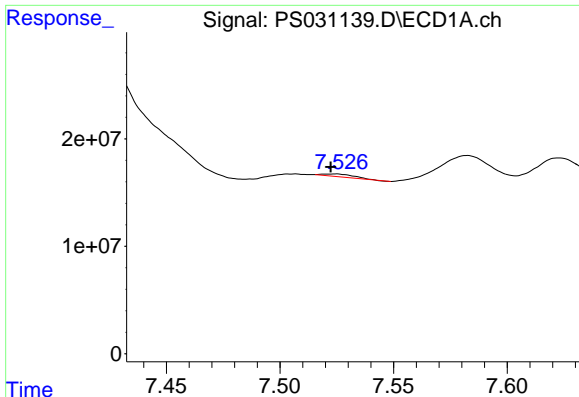
#4 2,4-DCAA

R.T.: 7.318 min
Delta R.T.: -0.015 min
Response: 648651697
Conc: 164.00 ng/ml



#4 2,4-DCAA

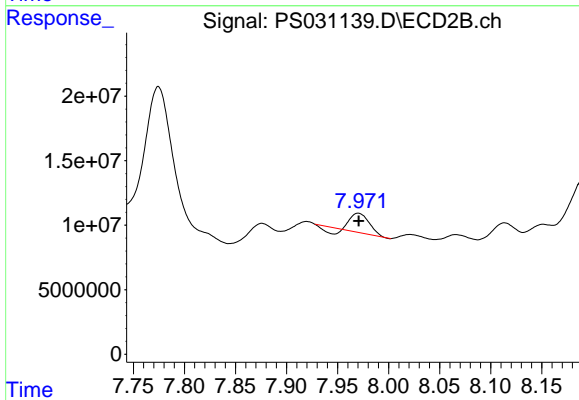
R.T.: 7.774 min
Delta R.T.: 0.006 min
Response: 277798794
Conc: 268.14 ng/ml



#5 DICAMBA

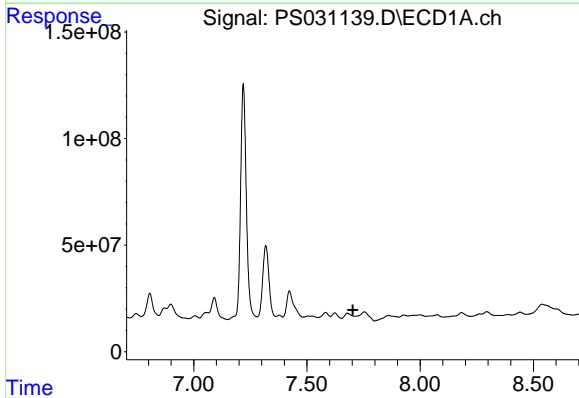
R.T.: 7.524 min
 Delta R.T.: 0.002 min
 Response: 2342313
 Conc: N.D.

Instrument :
 ECD_S
 ClientSampleId :



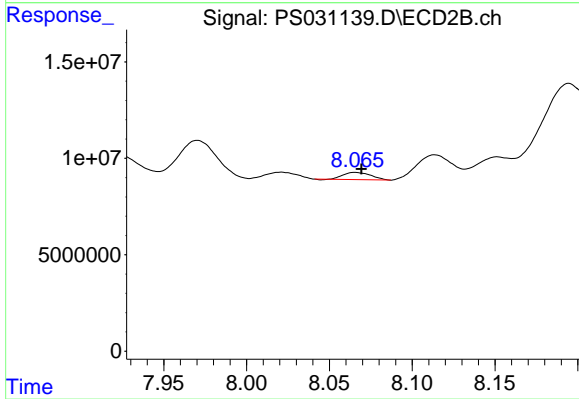
#5 DICAMBA

R.T.: 7.970 min
 Delta R.T.: 0.000 min
 Response: 14937128
 Conc: 2.31 ng/ml



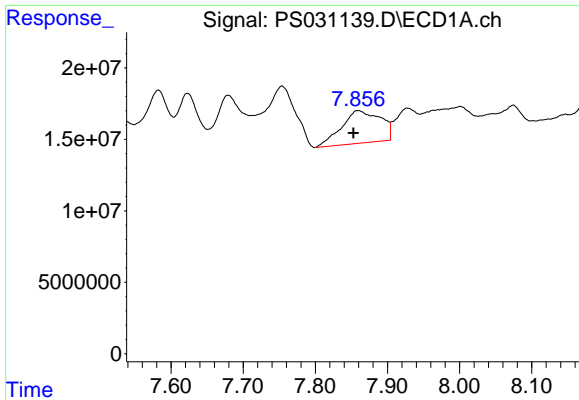
#6 MCPP

R.T.: 0.000 min
 Exp R.T. : 7.703 min
 Response: 0
 Conc: N.D.



#6 MCPP

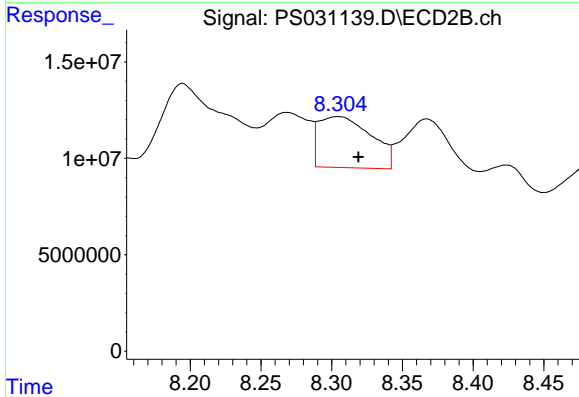
R.T.: 8.066 min
 Delta R.T.: -0.003 min
 Response: 4351819
 Conc: 2.04 ug/ml



#7 MCPA

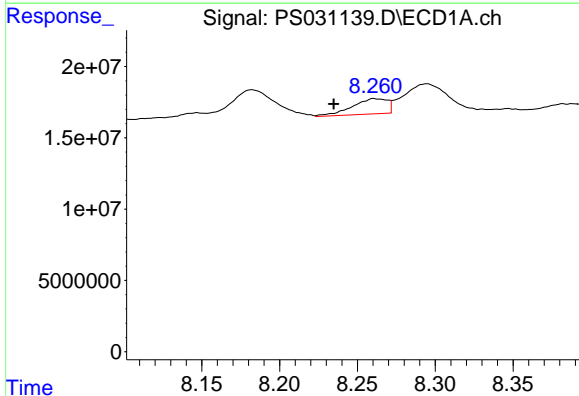
R.T.: 7.859 min
 Delta R.T.: 0.007 min
 Response: 85863902
 Conc: 7.87 ug/ml

Instrument :
 ECD_S
 ClientSampleId :



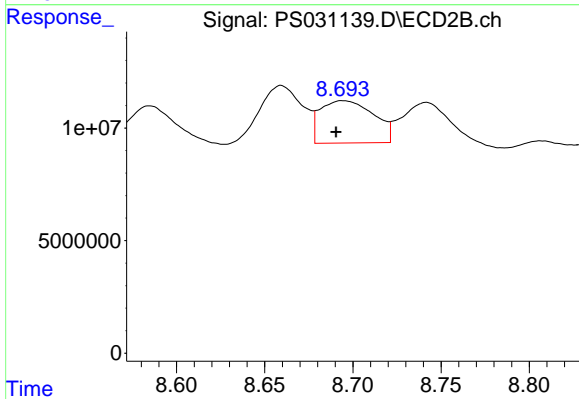
#7 MCPA

R.T.: 8.304 min
 Delta R.T.: -0.014 min
 Response: 68251520
 Conc: 21.29 ug/ml



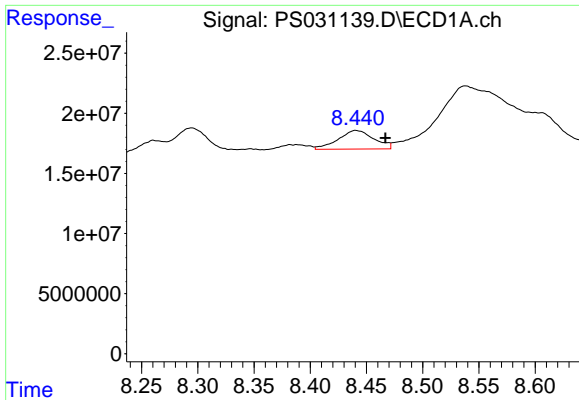
#8 DICHLORPROP

R.T.: 8.261 min
 Delta R.T.: 0.026 min
 Response: 16955313
 Conc: 4.98 ng/ml



#8 DICHLORPROP

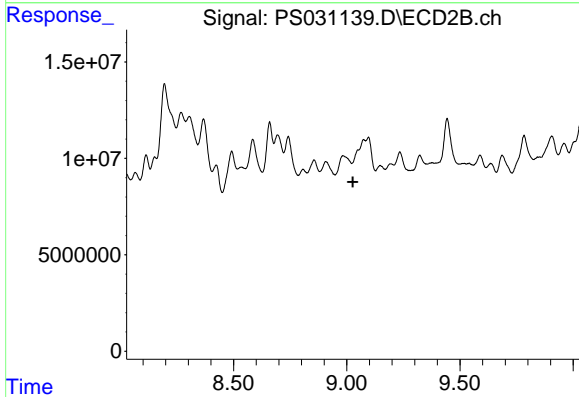
R.T.: 8.695 min
 Delta R.T.: 0.004 min
 Response: 39594637
 Conc: 26.06 ng/ml



#9 2,4-D

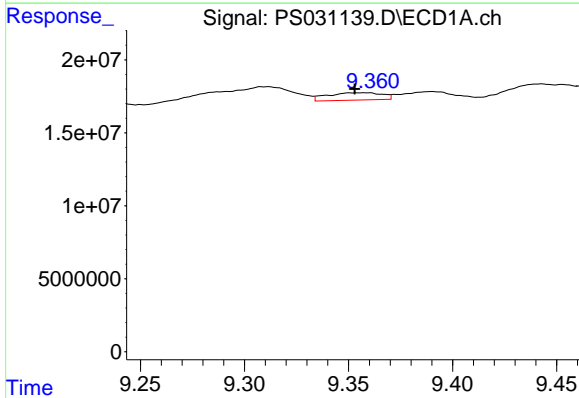
R.T.: 8.440 min
 Delta R.T.: -0.026 min
 Response: 34361685
 Conc: 11.16 ng/ml

Instrument :
 ECD_S
 ClientSampleId :



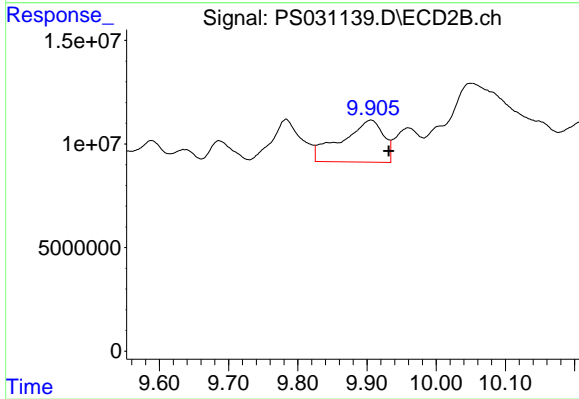
#9 2,4-D

R.T.: 0.000 min
 Exp R.T. : 9.027 min
 Response: 0
 Conc: N.D.



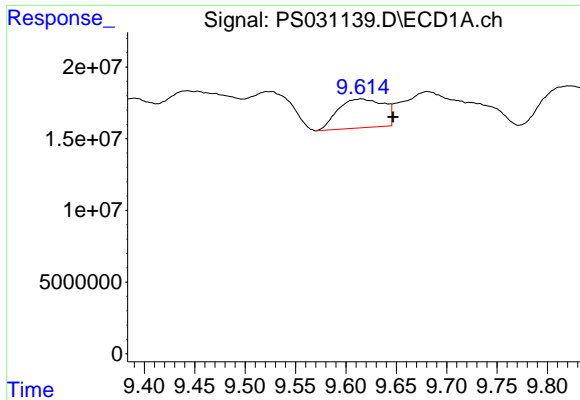
#11 2,4,5-TP (SILVEX)

R.T.: 9.358 min
 Delta R.T.: 0.005 min
 Response: 9143129
 Conc: N.D.



#11 2,4,5-TP (SILVEX)

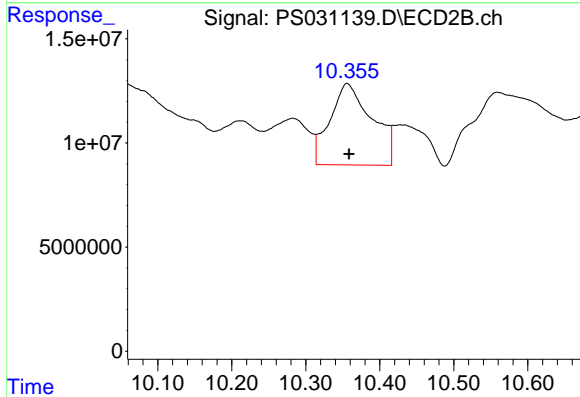
R.T.: 9.905 min
 Delta R.T.: -0.026 min
 Response: 84969501
 Conc: 5.79 ng/ml



#12 2,4,5-T

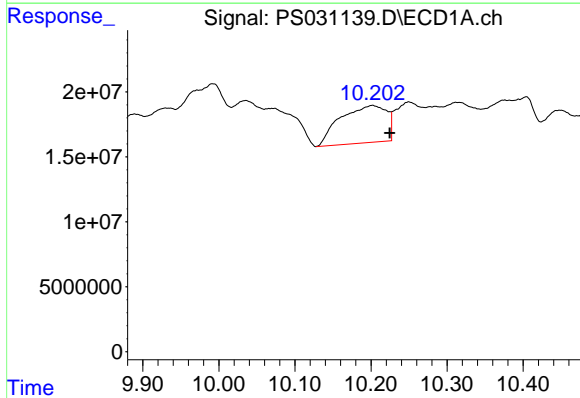
R.T.: 9.615 min
 Delta R.T.: -0.032 min
 Response: 63654569
 Conc: 4.18 ng/ml

Instrument :
 ECD_S
 ClientSampleId :



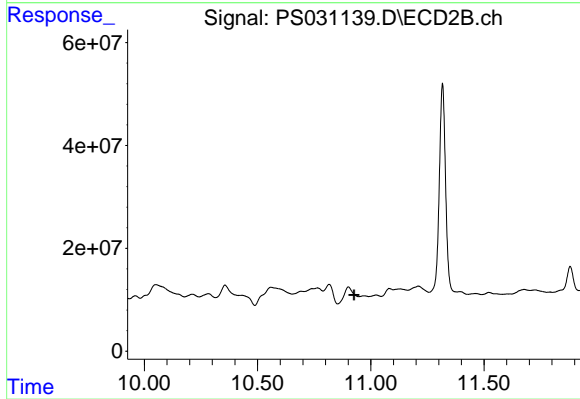
#12 2,4,5-T

R.T.: 10.356 min
 Delta R.T.: -0.002 min
 Response: 155295641
 Conc: 11.10 ng/ml



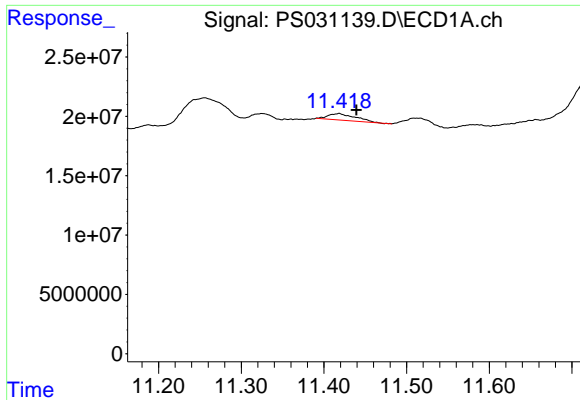
#13 2,4-DB

R.T.: 10.202 min
 Delta R.T.: -0.023 min
 Response: 121454646
 Conc: 55.95 ng/ml



#13 2,4-DB

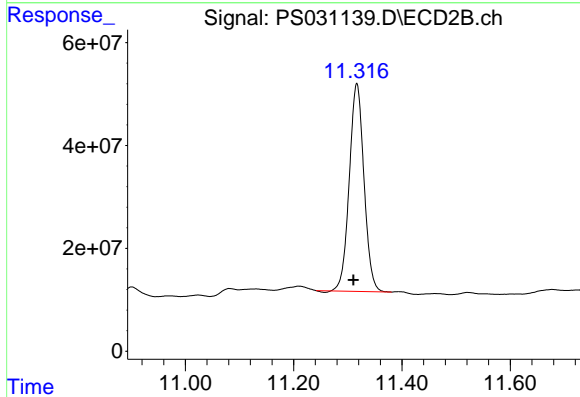
R.T.: 10.901 min
 Delta R.T.: -0.025 min
 Response: -23352597
 Conc: N.D.



#14 DINOSEB

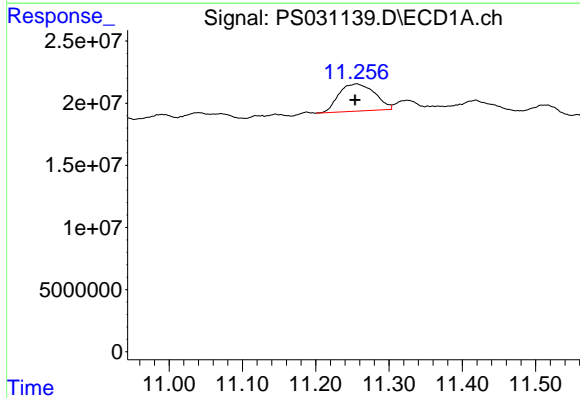
R.T.: 11.418 min
 Delta R.T.: -0.021 min
 Response: 12425414
 Conc: N.D.

Instrument :
 ECD_S
 ClientSampleId :



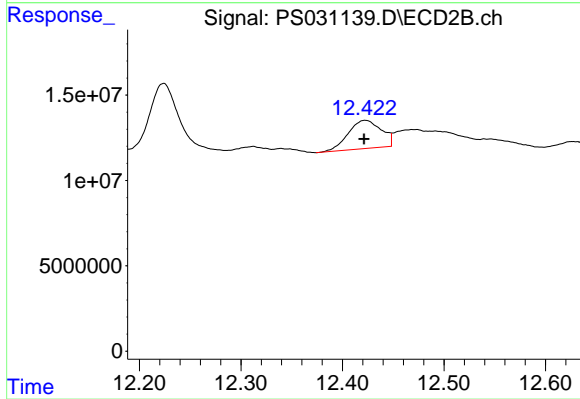
#14 DINOSEB

R.T.: 11.317 min
 Delta R.T.: 0.006 min
 Response: 757896176
 Conc: 66.77 ng/ml



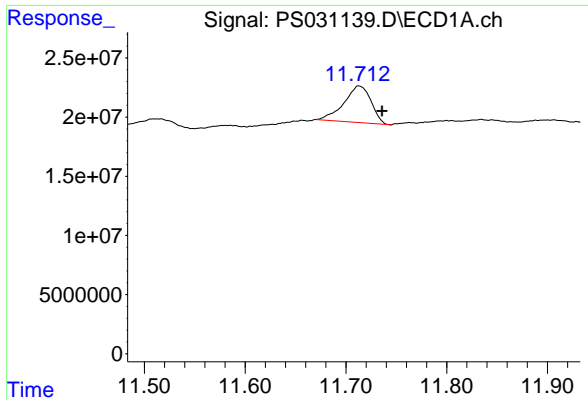
#15 Picloram

R.T.: 11.256 min
 Delta R.T.: 0.002 min
 Response: 74667296
 Conc: 5.12 ng/ml



#15 Picloram

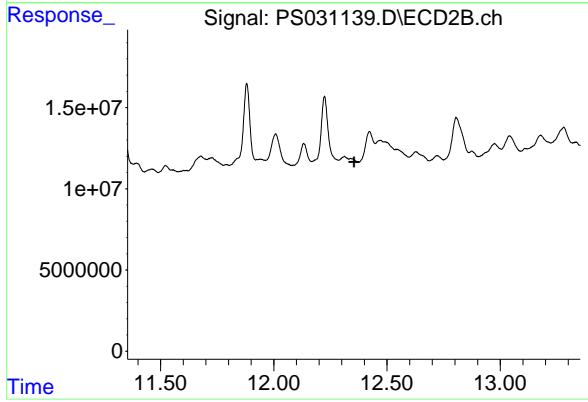
R.T.: 12.422 min
 Delta R.T.: 0.001 min
 Response: 37578316
 Conc: 1.60 ng/ml



#16 DCPA

R.T.: 11.713 min
Delta R.T.: -0.023 min
Response: 57706109
Conc: 2.41 ng/ml

Instrument :
ECD_S
ClientSampleId :



#16 DCPA

R.T.: 12.311 min
Delta R.T.: -0.043 min
Response: -34828087
Conc: N.D.