

Data Path : Z:\pestpcbsrv\HPCHEM1\ECD_S\Data\PS071825\
 Data File : PS031146.D
 Signal(s) : Signal #1: ECD1A.ch Signal #2: ECD2B.ch
 Acq On : 18 Jul 2025 22:10
 Operator : AR\AJ
 Sample : Q2529-10MSD
 Misc :
 ALS Vial : 19 Sample Multiplier: 1

Instrument :
 ECD_S
 ClientSampleId :
 TP-30MSD

Integration File signal 1: autoint1.e
 Integration File signal 2: autoint2.e
 Quant Time: Jul 18 23:23:22 2025
 Quant Method : Z:\pestpcbsrv\HPCHEM1\ECD_S\Method\PS071125.M
 Quant Title : 8080.M
 QLast Update : Mon Jul 14 05:51:06 2025
 Response via : Initial Calibration
 Integrator: ChemStation

Volume Inj. : 1 µl
 Signal #1 Phase : ZB-MR1 Signal #2 Phase: ZB-MR2
 Signal #1 Info : 30M x 0.32mm x0.5 Signal #2 Info : 30M x 0.32mm x 0.25µm

Compound	RT#1	RT#2	Resp#1	Resp#2	ng/ml	ng/ml

System Monitoring Compounds						
4) S 2,4-DCAA	7.323	7.768	713.3E6	266.3E6	180.347	257.067 #
Target Compounds						
1) T Dalapon	2.679	2.698	3676.0E6	3414.1E6	603.439	1200.953 #
2) T 3,5-DICHL...	6.488	6.713	1194.4E6	343.6E6	228.002	221.624
3) T 4-Nitroph...	7.090f	7.326	309.2E6	100.5E6	229.035	57.642 #
5) T DICAMBA	7.514	7.968	4249.8E6	1744.3E6	270.845	269.324
6) T MCPP	7.692	8.065	117.1E6	29807620	12.728	13.942
7) T MCPA	7.842	8.312	315.2E6	89941204	28.895	28.057
8) T DICHLORPROP	8.225	8.687	950.5E6	447.4E6	279.148	294.458
9) T 2,4-D	8.457	9.027	1622.9E6	1060.9E6	527.186	624.280
10) T Pentachlo...	8.763	9.547	4390.0E6	3004.2E6	87.342	77.959
11) T 2,4,5-TP ...	9.342	9.937	5993.2E6	11988.6E6	322.031	816.896 #
12) T 2,4,5-T	9.636	10.354	5988.2E6	3889.9E6	393.617	278.010 #
13) T 2,4-DB	10.213	10.919	494.1E6	69164493	227.614	58.456 #
14) T DINOSEB	11.420	11.316	18367764	868.7E6	1.393	76.523 #
15) T Picloram	11.236	12.416	5799.2E6	5900.2E6	397.967	251.281 #
16) T DCPA	11.725	12.351	8931.1E6	6957.1E6	373.107	308.491

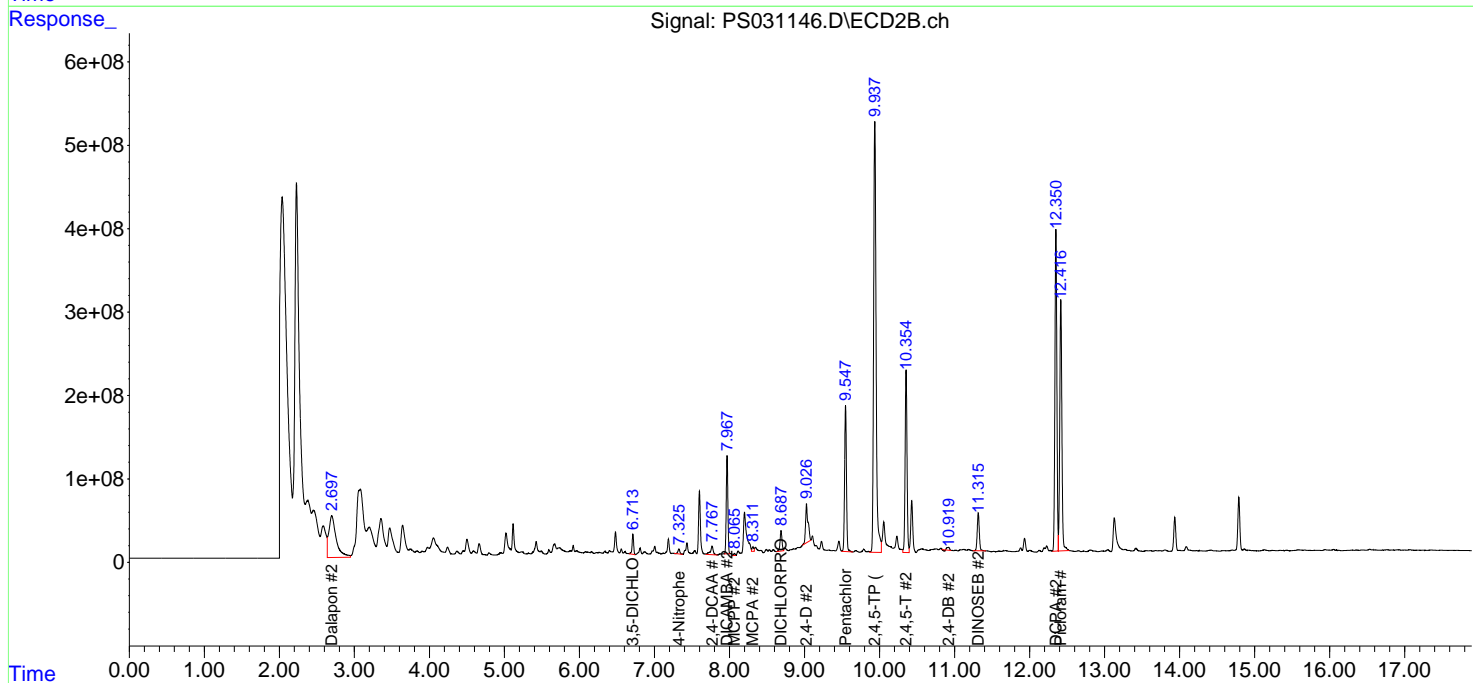
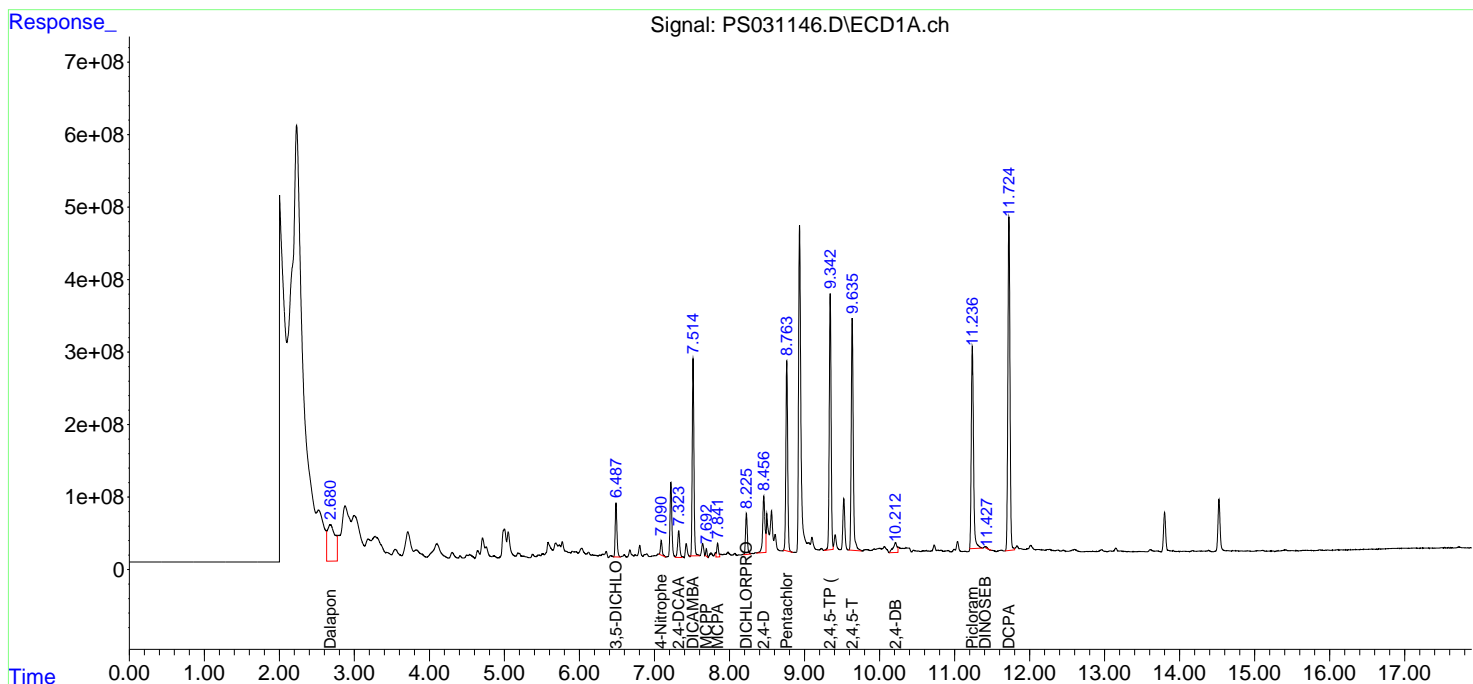
(f)=RT Delta > 1/2 Window (#)=Amounts differ by > 25% (m)=manual int.

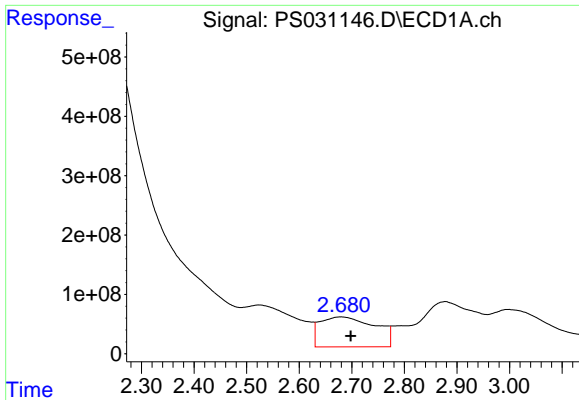
Data Path : Z:\pestpcbsrv\HPCHEM1\ECD_S\Data\PS071825\
 Data File : PS031146.D
 Signal(s) : Signal #1: ECD1A.ch Signal #2: ECD2B.ch
 Acq On : 18 Jul 2025 22:10
 Operator : AR\AJ
 Sample : Q2529-10MSD
 Misc :
 ALS Vial : 19 Sample Multiplier: 1

Instrument :
 ECD_S
 ClientSampleId :
 TP-30MSD

Integration File signal 1: autoint1.e
 Integration File signal 2: autoint2.e
 Quant Time: Jul 18 23:23:22 2025
 Quant Method : Z:\pestpcbsrv\HPCHEM1\ECD_S\Method\PS071125.M
 Quant Title : 8080.M
 QLast Update : Mon Jul 14 05:51:06 2025
 Response via : Initial Calibration
 Integrator: ChemStation

Volume Inj. : 1 µl
 Signal #1 Phase : ZB-MR1 Signal #2 Phase: ZB-MR2
 Signal #1 Info : 30M x 0.32mm x0.5 Signal #2 Info : 30M x 0.32mm x 0.25µm

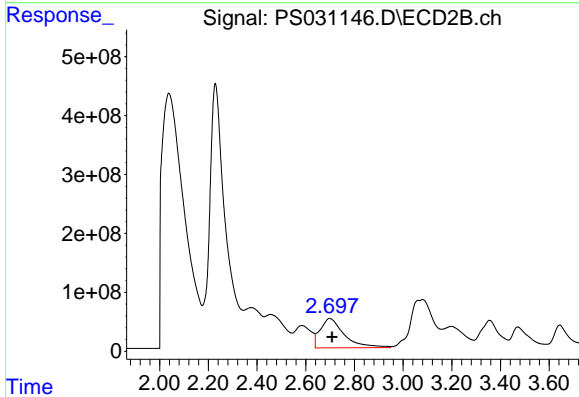




#1 Dalapon

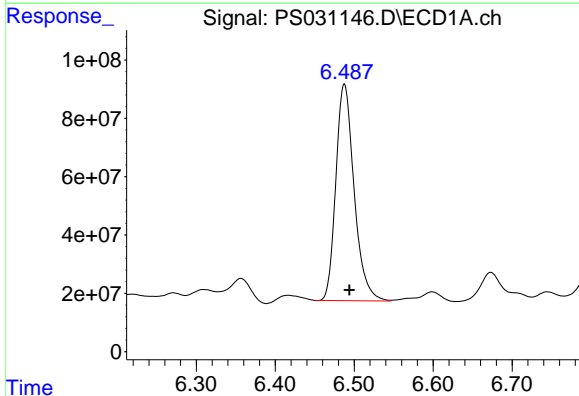
R.T.: 2.679 min
 Delta R.T.: -0.019 min
 Response: 3675983232
 Conc: 603.44 ng/ml

Instrument :
 ECD_S
 ClientSampleId :
 TP-30MSD



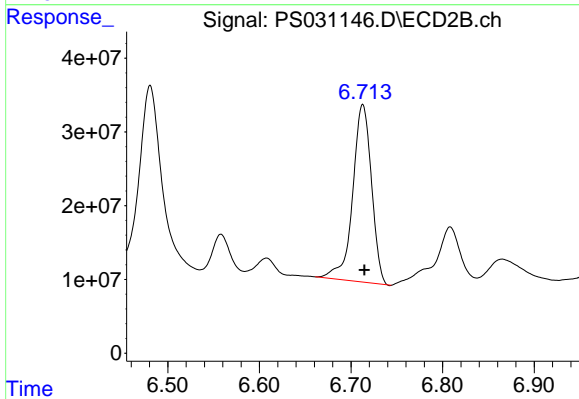
#1 Dalapon

R.T.: 2.698 min
 Delta R.T.: -0.011 min
 Response: 3414141022
 Conc: 1200.95 ng/ml



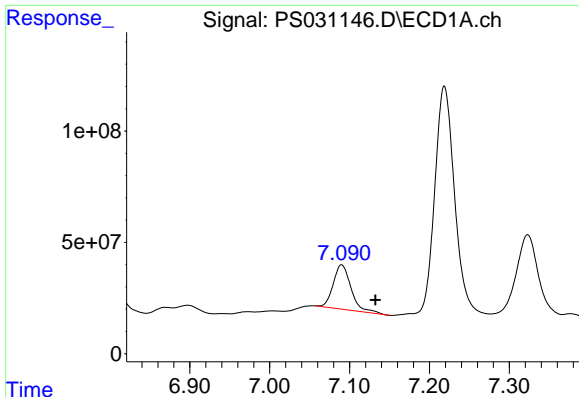
#2 3,5-DICHLOROBENZOIC ACID

R.T.: 6.488 min
 Delta R.T.: -0.006 min
 Response: 1194409104
 Conc: 228.00 ng/ml



#2 3,5-DICHLOROBENZOIC ACID

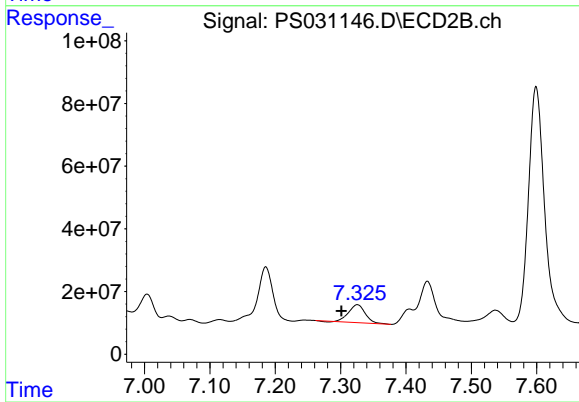
R.T.: 6.713 min
 Delta R.T.: -0.002 min
 Response: 343592648
 Conc: 221.62 ng/ml



#3 4-Nitrophenol

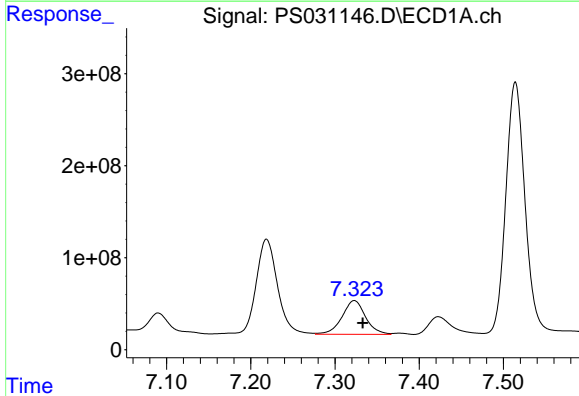
R.T.: 7.090 min
 Delta R.T.: -0.042 min
 Response: 309198861
 Conc: 229.03 ng/ml

Instrument :
 ECD_S
 ClientSampleId :
 TP-30MSD



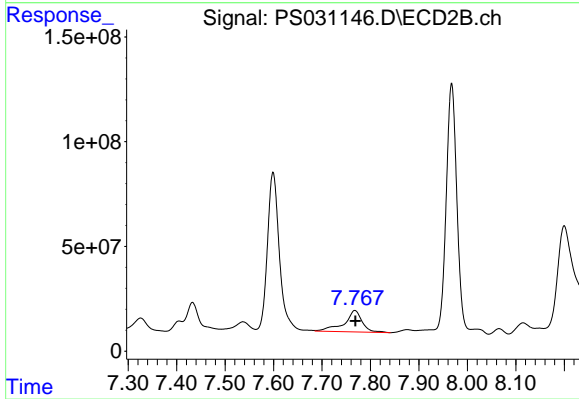
#3 4-Nitrophenol

R.T.: 7.326 min
 Delta R.T.: 0.024 min
 Response: 100521764
 Conc: 57.64 ng/ml



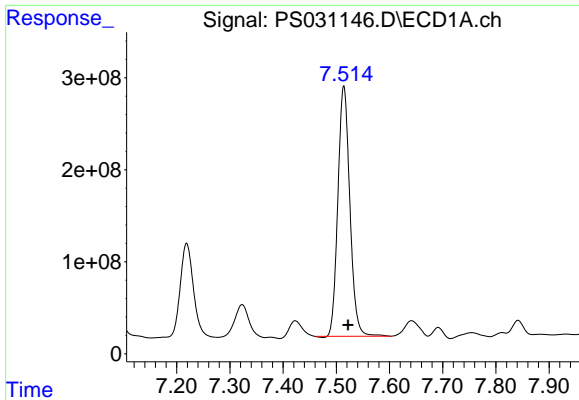
#4 2,4-DCAA

R.T.: 7.323 min
 Delta R.T.: -0.010 min
 Response: 713284502
 Conc: 180.35 ng/ml



#4 2,4-DCAA

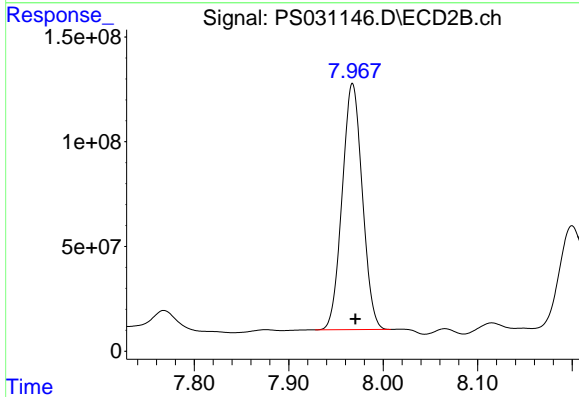
R.T.: 7.768 min
 Delta R.T.: 0.000 min
 Response: 266329432
 Conc: 257.07 ng/ml



#5 DICAMBA

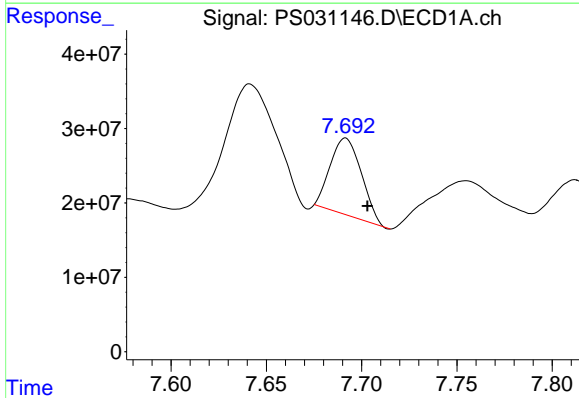
R.T.: 7.514 min
 Delta R.T.: -0.008 min
 Response: 4249805059
 Conc: 270.84 ng/ml

Instrument :
 ECD_S
 ClientSampleId :
 TP-30MSD



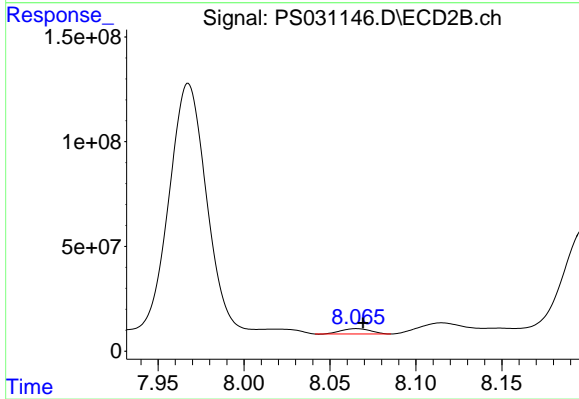
#5 DICAMBA

R.T.: 7.968 min
 Delta R.T.: -0.003 min
 Response: 1744253711
 Conc: 269.32 ng/ml



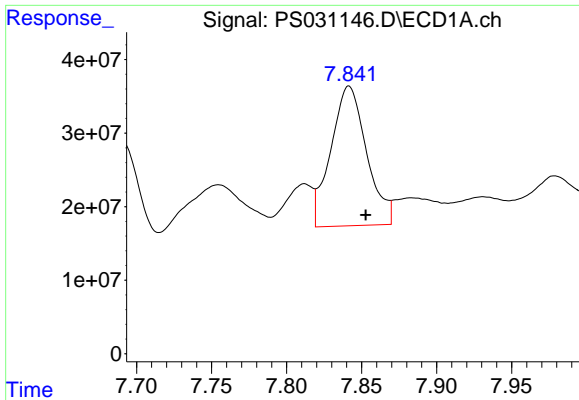
#6 MCPP

R.T.: 7.692 min
 Delta R.T.: -0.011 min
 Response: 117111776
 Conc: 12.73 ug/ml



#6 MCPP

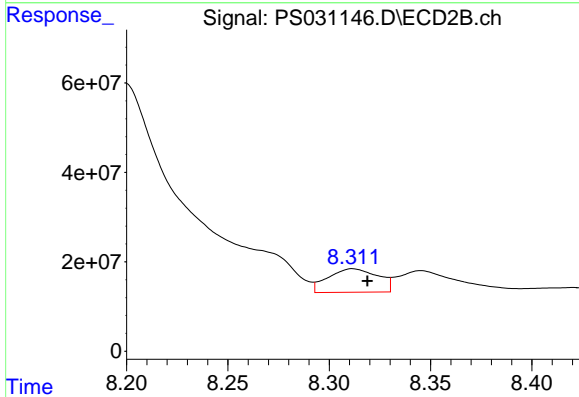
R.T.: 8.065 min
 Delta R.T.: -0.004 min
 Response: 29807620
 Conc: 13.94 ug/ml



#7 MCPA

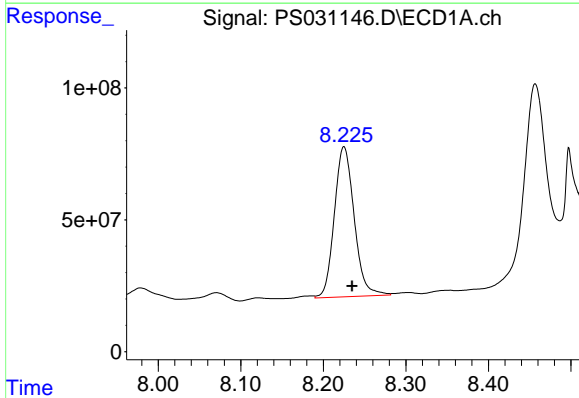
R.T.: 7.842 min
 Delta R.T.: -0.011 min
 Response: 315152487
 Conc: 28.90 ug/ml

Instrument :
 ECD_S
 ClientSampleId :
 TP-30MSD



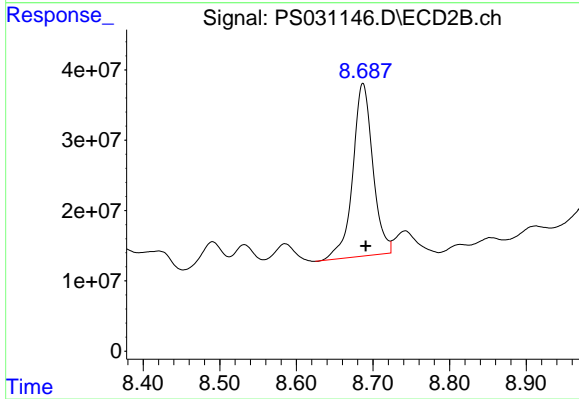
#7 MCPA

R.T.: 8.312 min
 Delta R.T.: -0.007 min
 Response: 89941204
 Conc: 28.06 ug/ml



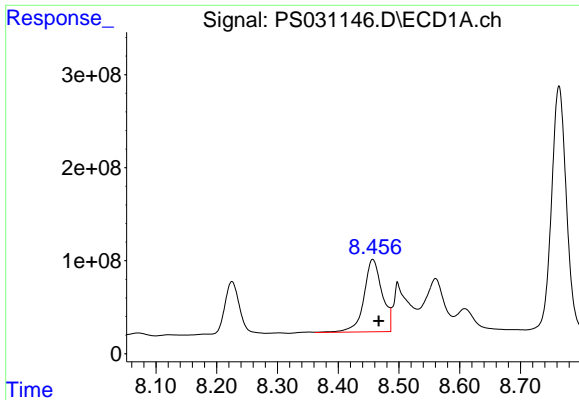
#8 DICHLORPROP

R.T.: 8.225 min
 Delta R.T.: -0.010 min
 Response: 950540368
 Conc: 279.15 ng/ml



#8 DICHLORPROP

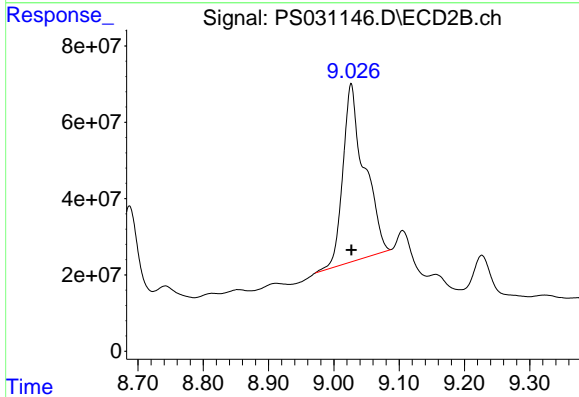
R.T.: 8.687 min
 Delta R.T.: -0.004 min
 Response: 447358014
 Conc: 294.46 ng/ml



#9 2,4-D

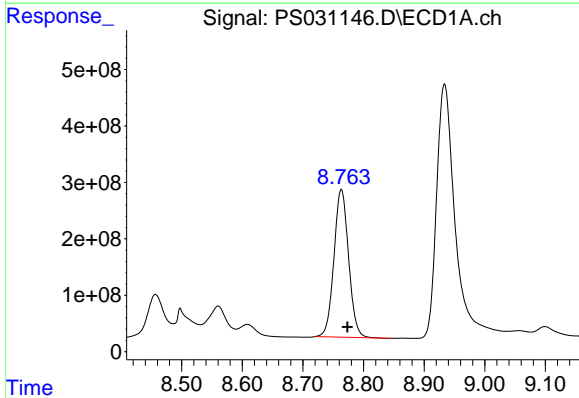
R.T.: 8.457 min
 Delta R.T.: -0.010 min
 Response: 1622907149
 Conc: 527.19 ng/ml

Instrument :
 ECD_S
 ClientSampleId :
 TP-30MSD



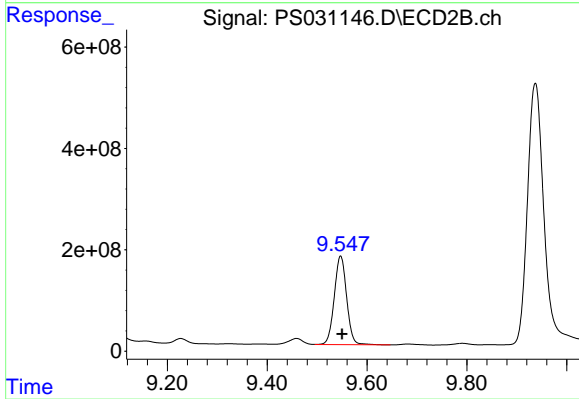
#9 2,4-D

R.T.: 9.027 min
 Delta R.T.: 0.000 min
 Response: 1060942242
 Conc: 624.28 ng/ml



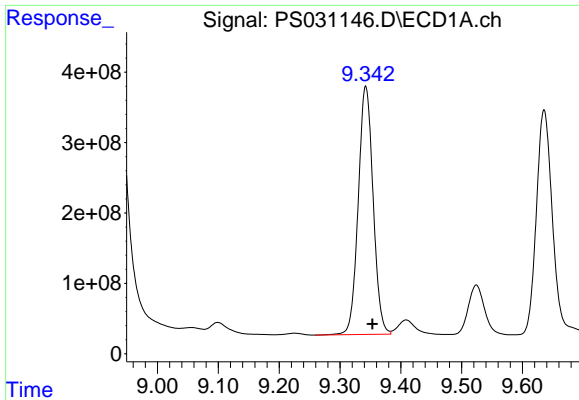
#10 Pentachlorophenol

R.T.: 8.763 min
 Delta R.T.: -0.010 min
 Response: 4389960813
 Conc: 87.34 ng/ml



#10 Pentachlorophenol

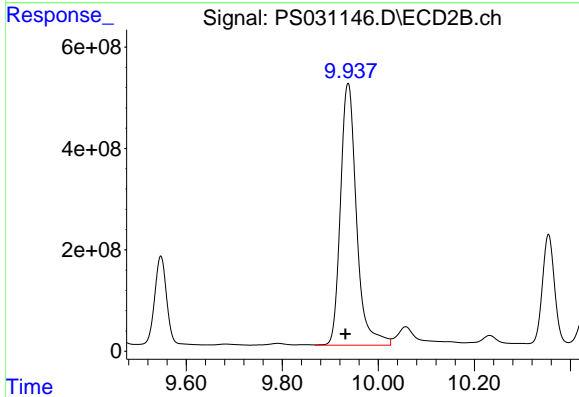
R.T.: 9.547 min
 Delta R.T.: -0.003 min
 Response: 3004162615
 Conc: 77.96 ng/ml



#11 2,4,5-TP (SILVEX)

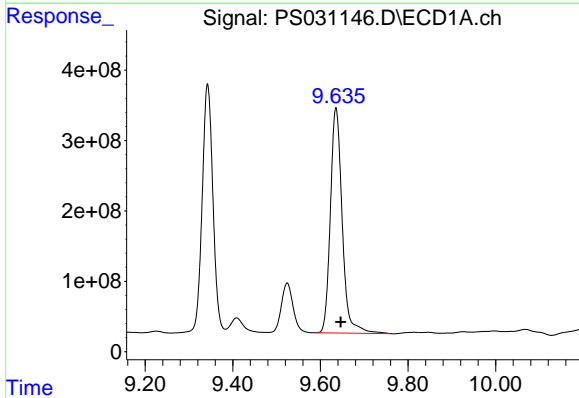
R.T.: 9.342 min
 Delta R.T.: -0.011 min
 Response: 5993231782
 Conc: 322.03 ng/ml

Instrument :
 ECD_S
 ClientSampleId :
 TP-30MSD



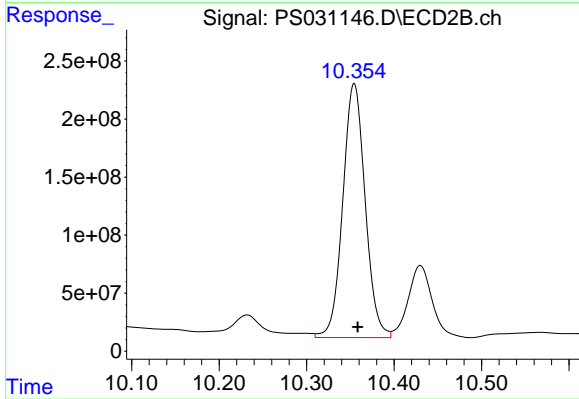
#11 2,4,5-TP (SILVEX)

R.T.: 9.937 min
 Delta R.T.: 0.005 min
 Response: 11988580318
 Conc: 816.90 ng/ml



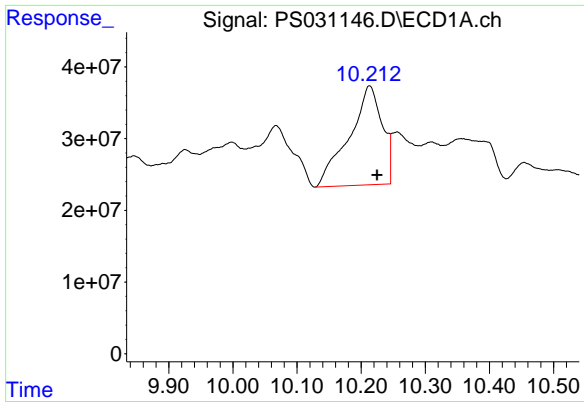
#12 2,4,5-T

R.T.: 9.636 min
 Delta R.T.: -0.011 min
 Response: 5988215157
 Conc: 393.62 ng/ml



#12 2,4,5-T

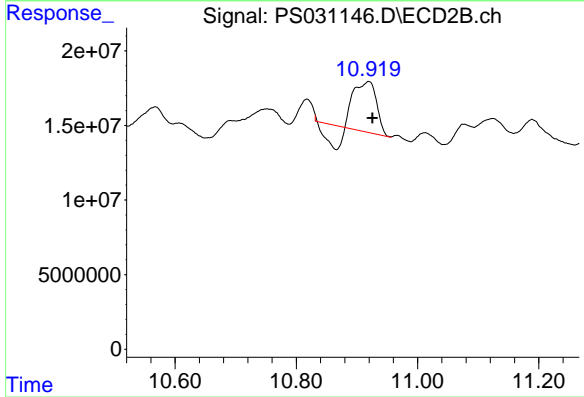
R.T.: 10.354 min
 Delta R.T.: -0.004 min
 Response: 3889867754
 Conc: 278.01 ng/ml



#13 2,4-DB

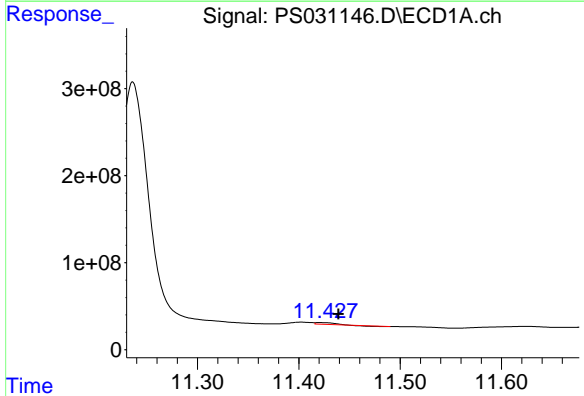
R.T.: 10.213 min
 Delta R.T.: -0.012 min
 Response: 494103177
 Conc: 227.61 ng/ml

Instrument :
 ECD_S
 ClientSampleId :
 TP-30MSD



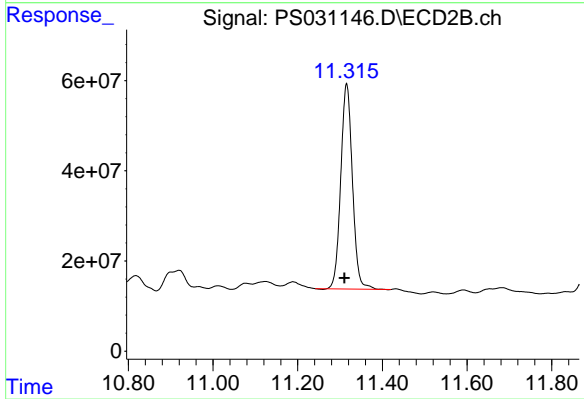
#13 2,4-DB

R.T.: 10.919 min
 Delta R.T.: -0.007 min
 Response: 69164493
 Conc: 58.46 ng/ml



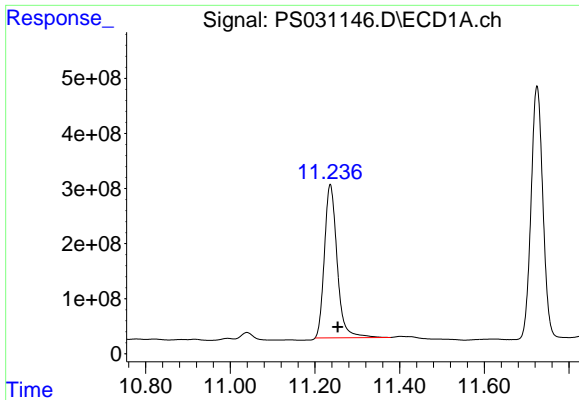
#14 DINOSEB

R.T.: 11.420 min
 Delta R.T.: -0.019 min
 Response: 18367764
 Conc: 1.39 ng/ml



#14 DINOSEB

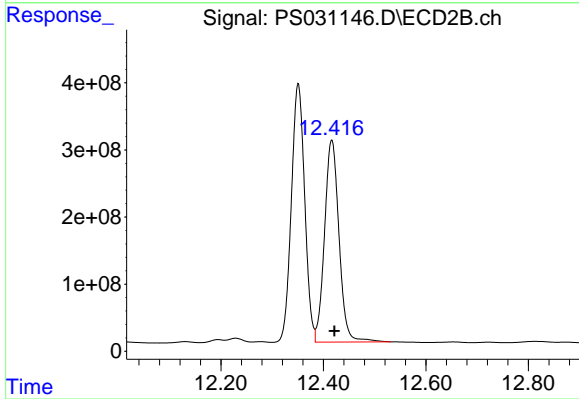
R.T.: 11.316 min
 Delta R.T.: 0.005 min
 Response: 868653933
 Conc: 76.52 ng/ml



#15 Picloram

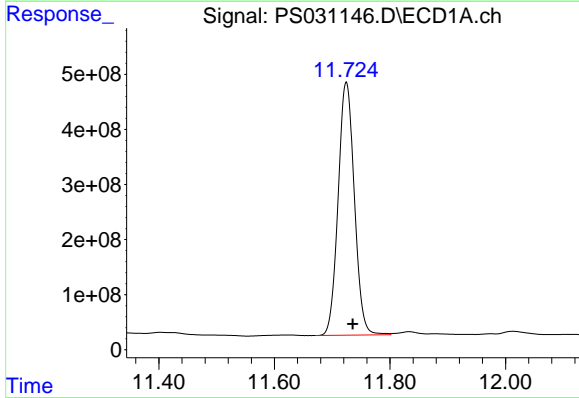
R.T.: 11.236 min
 Delta R.T.: -0.018 min
 Response: 5799155295
 Conc: 397.97 ng/ml

Instrument :
 ECD_S
 ClientSampleId :
 TP-30MSD



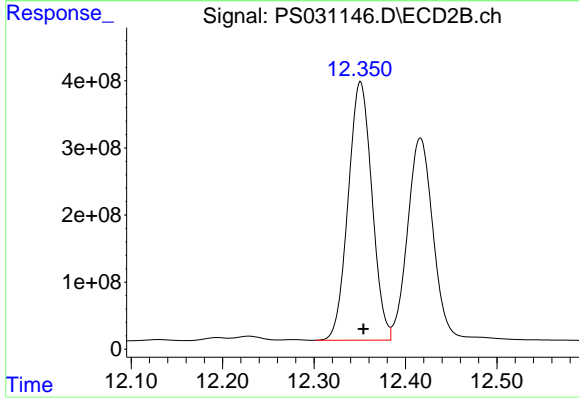
#15 Picloram

R.T.: 12.416 min
 Delta R.T.: -0.005 min
 Response: 5900249612
 Conc: 251.28 ng/ml



#16 DCPA

R.T.: 11.725 min
 Delta R.T.: -0.011 min
 Response: 8931118551
 Conc: 373.11 ng/ml



#16 DCPA

R.T.: 12.351 min
 Delta R.T.: -0.003 min
 Response: 6957075742
 Conc: 308.49 ng/ml