

Data Path : Z:\pestpcbsrv\HPCHEM1\ECD_S\Data\PS071825\
 Data File : PS031148.D
 Signal(s) : Signal #1: ECD1A.ch Signal #2: ECD2B.ch
 Acq On : 18 Jul 2025 22:59
 Operator : AR\AJ
 Sample : Q2543-02
 Misc :
 ALS Vial : 21 Sample Multiplier: 1

Instrument :
 ECD_S
 ClientSampleId :
 TP-49

Integration File signal 1: autoint1.e
 Integration File signal 2: autoint2.e
 Quant Time: Jul 19 06:17:44 2025
 Quant Method : Z:\pestpcbsrv\HPCHEM1\ECD_S\Method\PS071125.M
 Quant Title : 8080.M
 QLast Update : Mon Jul 14 05:51:06 2025
 Response via : Initial Calibration
 Integrator: ChemStation

Volume Inj. : 1 µl
 Signal #1 Phase : ZB-MR2 Signal #2 Phase: ZB-MR2
 Signal #1 Info : 30M x 0.32mm x0.5 Signal #2 Info : 30M x 0.32mm x 0.25µm

Compound	RT#1	RT#2	Resp#1	Resp#2	ng/ml	ng/ml

System Monitoring Compounds						
4) S 2,4-DCAA	7.324	7.765	1061.7E6	390.4E6	268.450	376.813 #
Target Compounds						
1) T Dalapon	2.655f	2.695	1605.3E6	2180.7E6	263.525	767.082 #
2) T 3,5-DICHL...	6.477	6.724	-11611804	7024088	N.D.	4.531
3) T 4-Nitroph...	7.165f	7.288	2514900	54075066	1.863	31.008 #
5) T DICAMBA	7.528	7.972	33146362	-9614607	2.112	N.D. #
6) T MCPP	7.725	8.070	113.3E6	2753986	12.310	1.288 #
7) T MCPA	7.850	8.283f	81699649	148.0E6	7.491	46.157 #
8) T DICHLORPROP	8.237	8.698	15654337	44893207	4.597	29.549 #
10) T Pentachlo...	8.787	9.548	10238624	24137372	<MDL	<MDL #
11) T 2,4,5-TP ...	9.353	9.951	9733376	70143782	<MDL	4.780 #
12) T 2,4,5-T	9.642	10.355	57568380	832.1E6	3.784	59.474 #
13) T 2,4-DB	10.245	10.899f	248.4E6	69308173	114.411	58.578 #
14) T DINOSEB	11.413f	11.316	113.7E6	5112.4E6	8.622	450.369 #
15) T Picloram	11.256	12.426	106.3E6	41542504	7.295	1.769 #
16) T DCPA	11.694f	12.306f	69264367	97046013	2.894	4.303 #

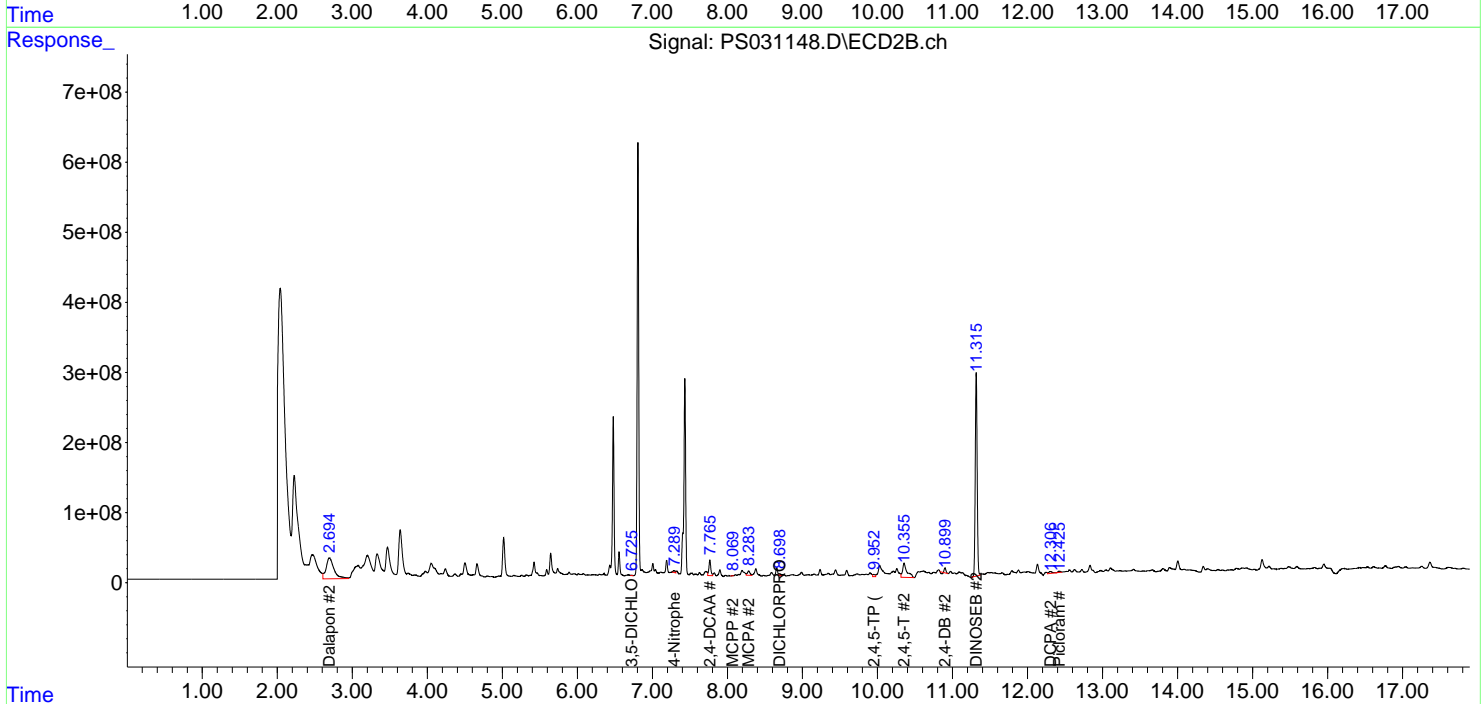
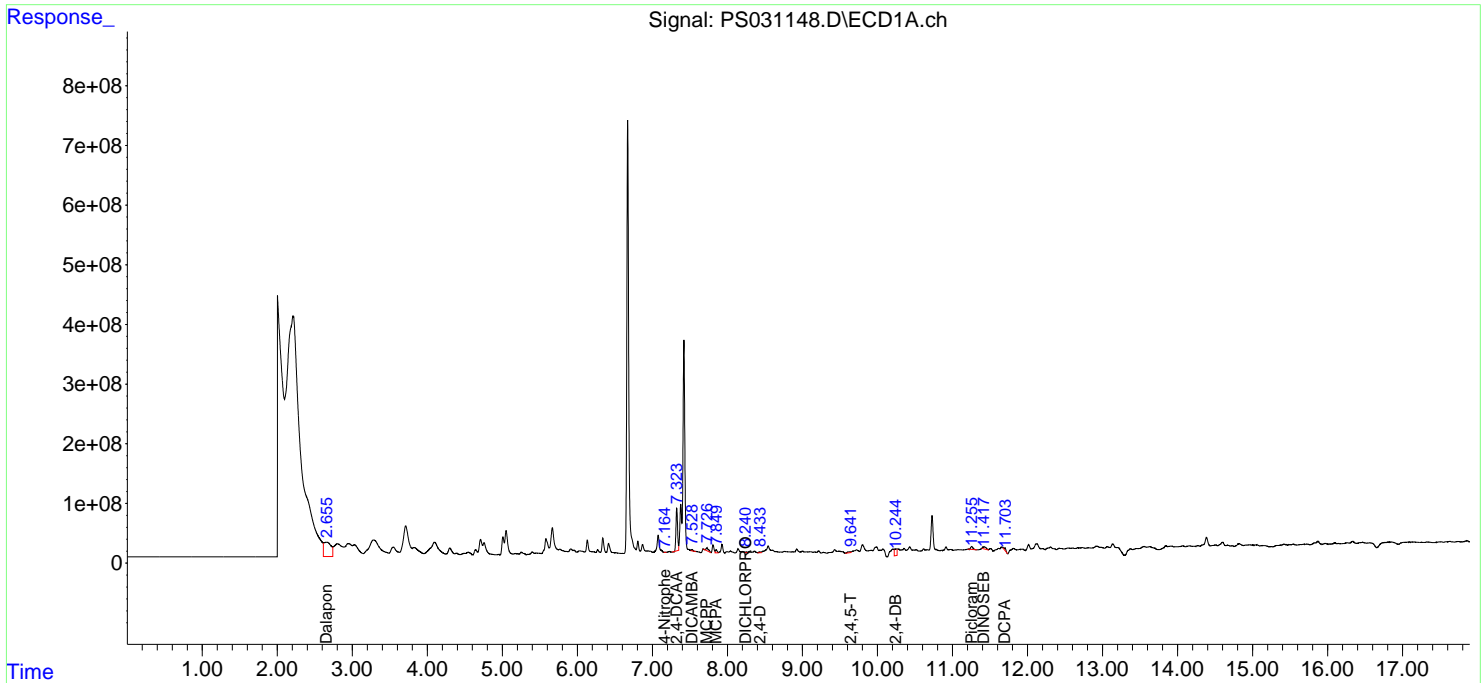
(f)=RT Delta > 1/2 Window (#)=Amounts differ by > 25% (m)=manual int.

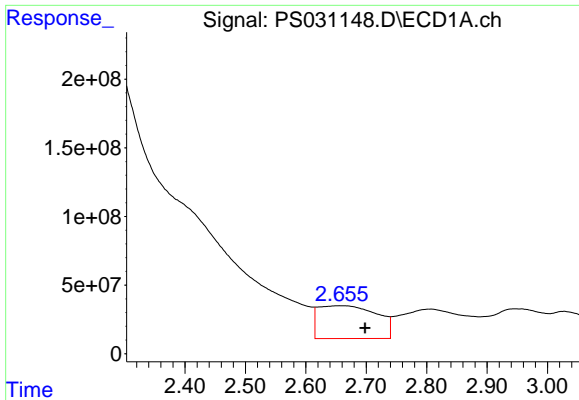
Data Path : Z:\pestpcbsrv\HPCHEM1\ECD_S\Data\PS071825\
 Data File : PS031148.D
 Signal(s) : Signal #1: ECD1A.ch Signal #2: ECD2B.ch
 Acq On : 18 Jul 2025 22:59
 Operator : AR\AJ
 Sample : Q2543-02
 Misc :
 ALS Vial : 21 Sample Multiplier: 1

Instrument :
 ECD_S
 ClientSampleId :
 TP-49

Integration File signal 1: autoint1.e
 Integration File signal 2: autoint2.e
 Quant Time: Jul 19 06:17:44 2025
 Quant Method : Z:\pestpcbsrv\HPCHEM1\ECD_S\Method\PS071125.M
 Quant Title : 8080.M
 QLast Update : Mon Jul 14 05:51:06 2025
 Response via : Initial Calibration
 Integrator: ChemStation

Volume Inj. : 1 µl
 Signal #1 Phase : ZB-MR1 Signal #2 Phase: ZB-MR2
 Signal #1 Info : 30M x 0.32mm x0.5 Signal #2 Info : 30M x 0.32mm x 0.25µm

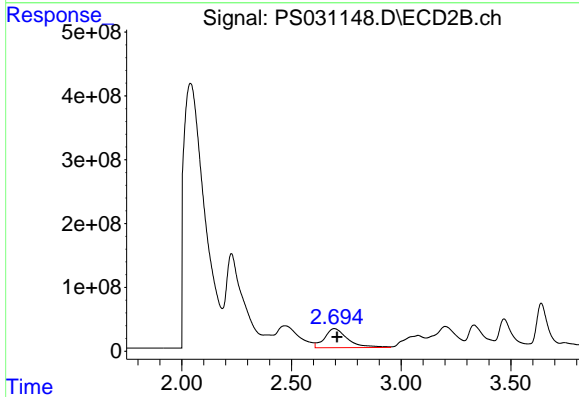




#1 Dalapon

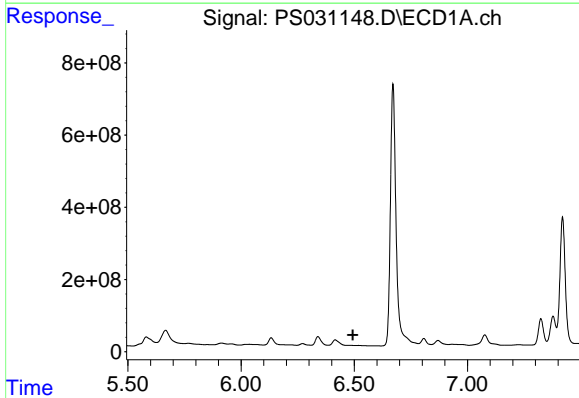
R.T.: 2.655 min
 Delta R.T.: -0.043 min
 Response: 1605321769
 Conc: 263.53 ng/ml

Instrument :
 ECD_S
 ClientSampleId :
 TP-49



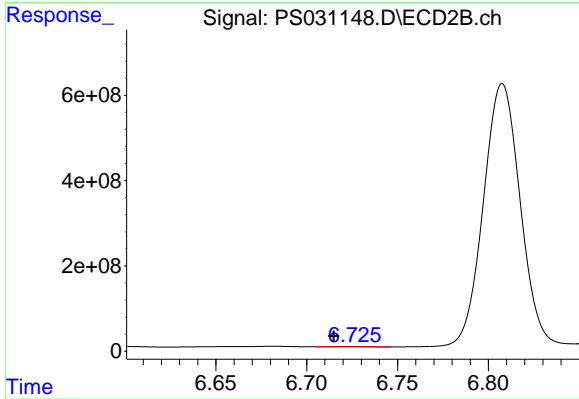
#1 Dalapon

R.T.: 2.695 min
 Delta R.T.: -0.014 min
 Response: 2180705769
 Conc: 767.08 ng/ml



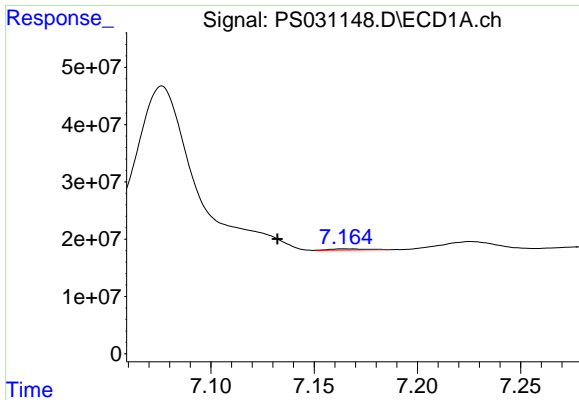
#2 3,5-DICHLOROBENZOIC ACID

R.T.: 6.477 min
 Delta R.T.: -0.017 min
 Response: -11611804
 Conc: N.D.



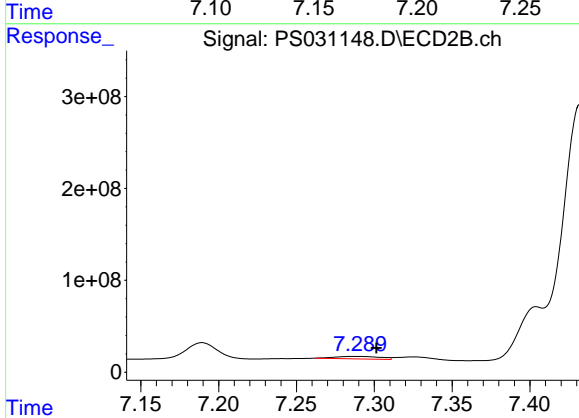
#2 3,5-DICHLOROBENZOIC ACID

R.T.: 6.724 min
 Delta R.T.: 0.009 min
 Response: 7024088
 Conc: 4.53 ng/ml

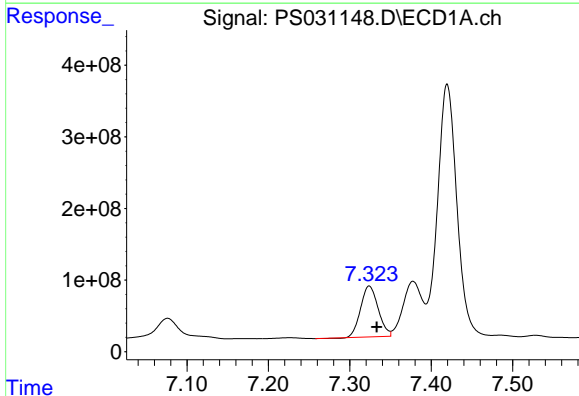


#3 4-Nitrophenol
 R.T.: 7.165 min
 Delta R.T.: 0.032 min
 Response: 2514900
 Conc: 1.86 ng/ml

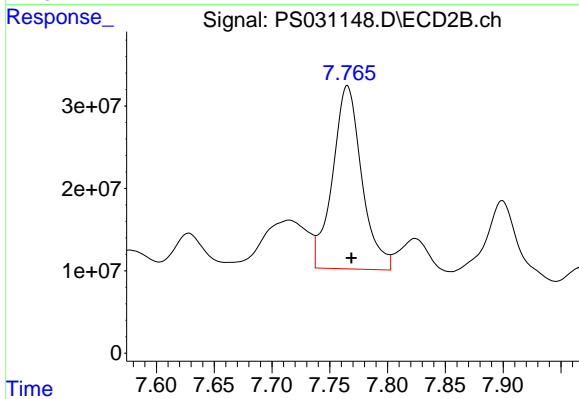
Instrument :
 ECD_S
 ClientSampleId :
 TP-49



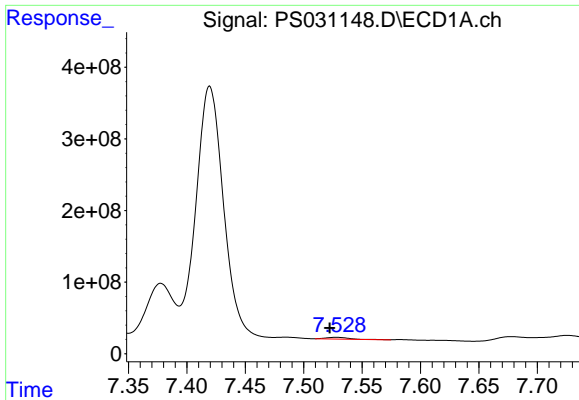
#3 4-Nitrophenol
 R.T.: 7.288 min
 Delta R.T.: -0.013 min
 Response: 54075066
 Conc: 31.01 ng/ml



#4 2,4-DCAA
 R.T.: 7.324 min
 Delta R.T.: -0.009 min
 Response: 1061738351
 Conc: 268.45 ng/ml



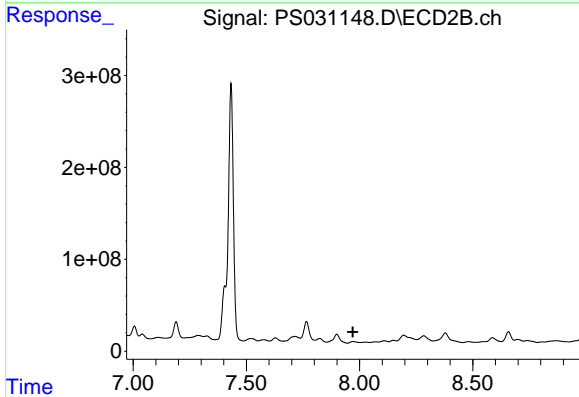
#4 2,4-DCAA
 R.T.: 7.765 min
 Delta R.T.: -0.003 min
 Response: 390390278
 Conc: 376.81 ng/ml



#5 DICAMBA

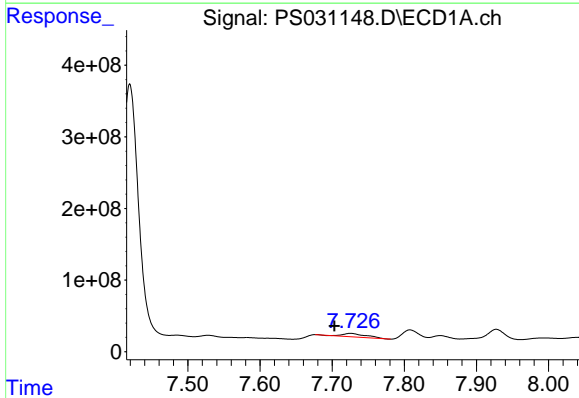
R.T.: 7.528 min
 Delta R.T.: 0.006 min
 Response: 33146362
 Conc: 2.11 ng/ml

Instrument :
 ECD_S
 ClientSampleId :
 TP-49



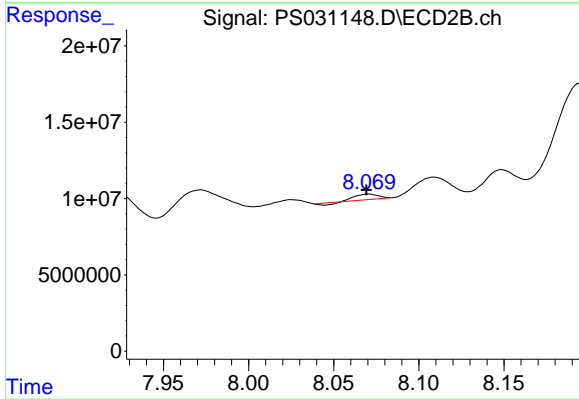
#5 DICAMBA

R.T.: 7.972 min
 Delta R.T.: 0.001 min
 Response: -9614607
 Conc: N.D.



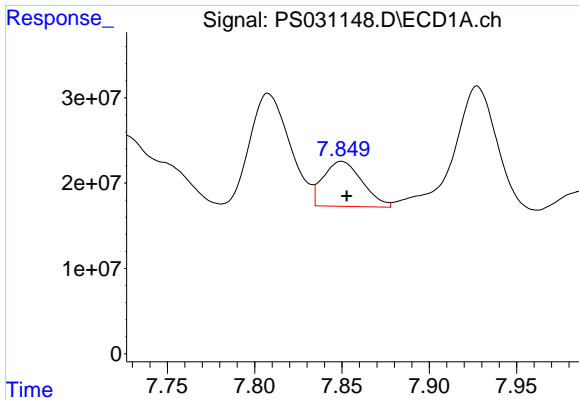
#6 MCP

R.T.: 7.725 min
 Delta R.T.: 0.022 min
 Response: 113269933
 Conc: 12.31 ug/ml



#6 MCP

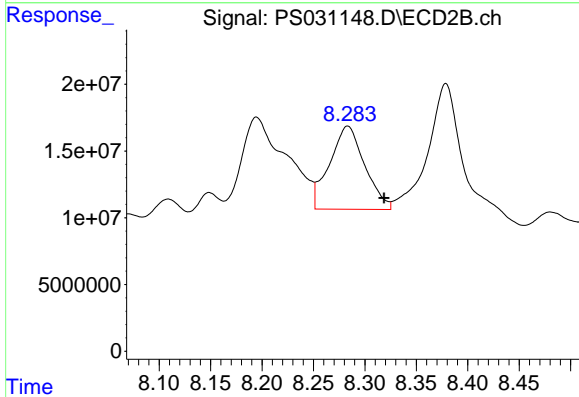
R.T.: 8.070 min
 Delta R.T.: 0.001 min
 Response: 2753986
 Conc: 1.29 ug/ml



#7 MCPA

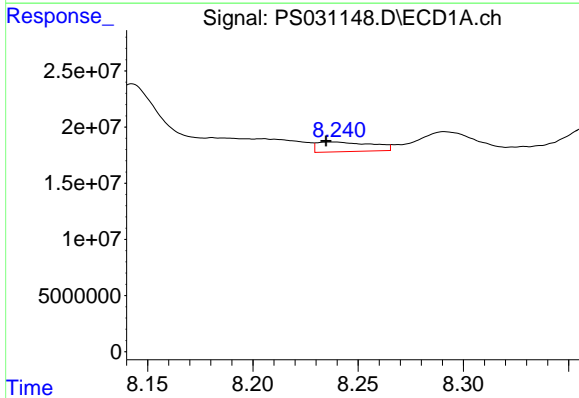
R.T.: 7.850 min
 Delta R.T.: -0.003 min
 Response: 81699649
 Conc: 7.49 ug/ml

Instrument :
 ECD_S
 ClientSampleId :
 TP-49



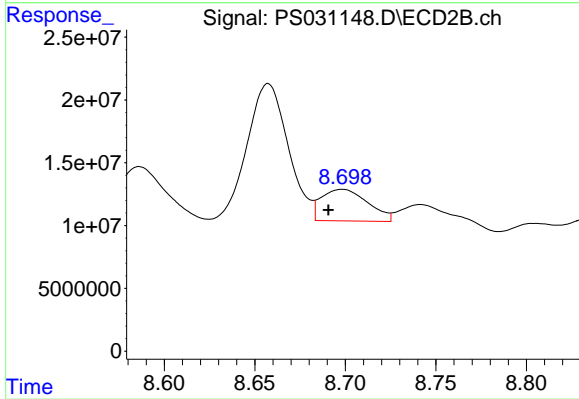
#7 MCPA

R.T.: 8.283 min
 Delta R.T.: -0.036 min
 Response: 147962877
 Conc: 46.16 ug/ml



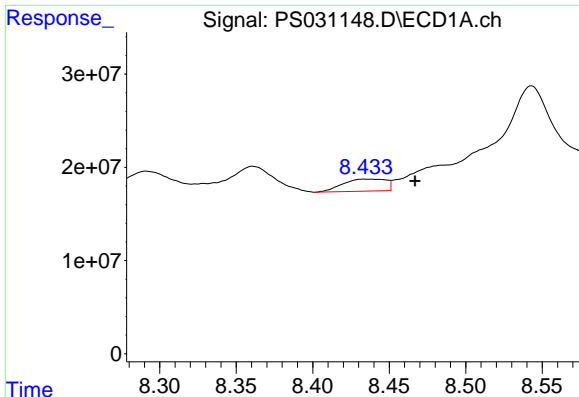
#8 DICHLORPROP

R.T.: 8.237 min
 Delta R.T.: 0.003 min
 Response: 15654337
 Conc: 4.60 ng/ml



#8 DICHLORPROP

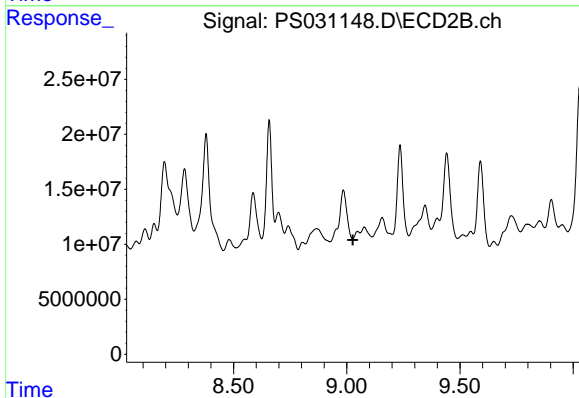
R.T.: 8.698 min
 Delta R.T.: 0.008 min
 Response: 44893207
 Conc: 29.55 ng/ml



#9 2,4-D

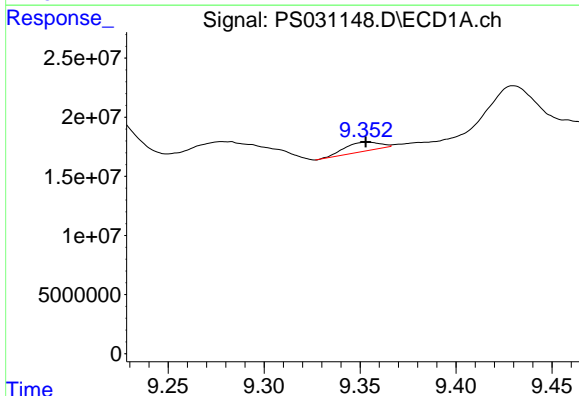
R.T.: 8.433 min
 Delta R.T.: -0.033 min
 Response: 25593973
 Conc: 8.31 ng/ml

Instrument :
 ECD_S
 ClientSampleId :
 TP-49



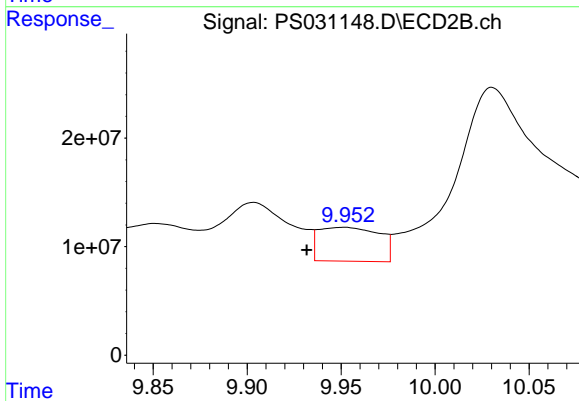
#9 2,4-D

R.T.: 9.048 min
 Delta R.T.: 0.021 min
 Response: -24684311
 Conc: N.D.



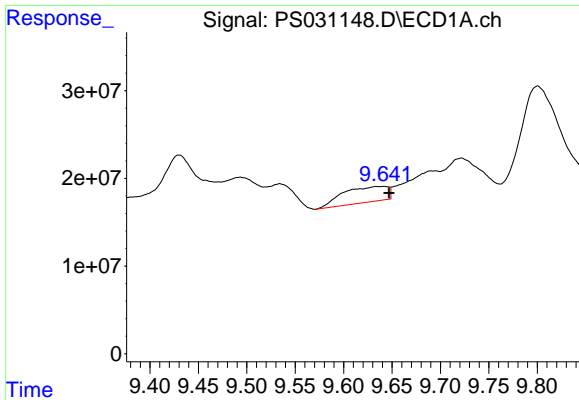
#11 2,4,5-TP (SILVEX)

R.T.: 9.353 min
 Delta R.T.: 0.000 min
 Response: 9733376
 Conc: N.D.



#11 2,4,5-TP (SILVEX)

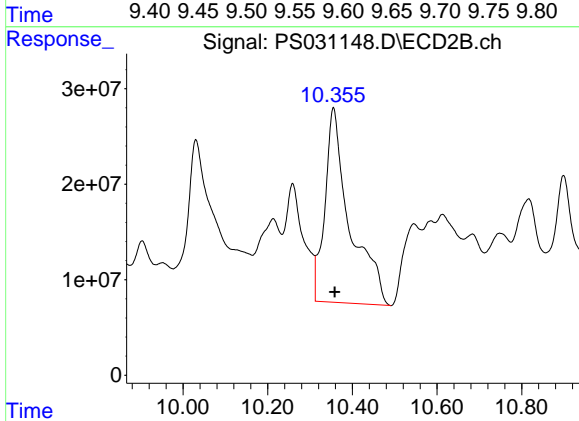
R.T.: 9.951 min
 Delta R.T.: 0.019 min
 Response: 70143782
 Conc: 4.78 ng/ml



#12 2,4,5-T

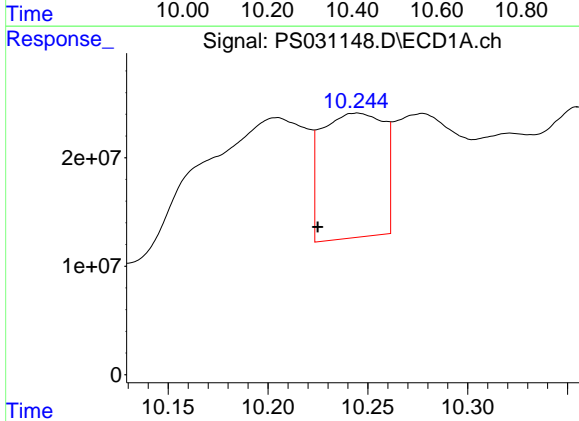
R.T.: 9.642 min
 Delta R.T.: -0.005 min
 Response: 57568380
 Conc: 3.78 ng/ml

Instrument :
 ECD_S
 ClientSampleId :
 TP-49



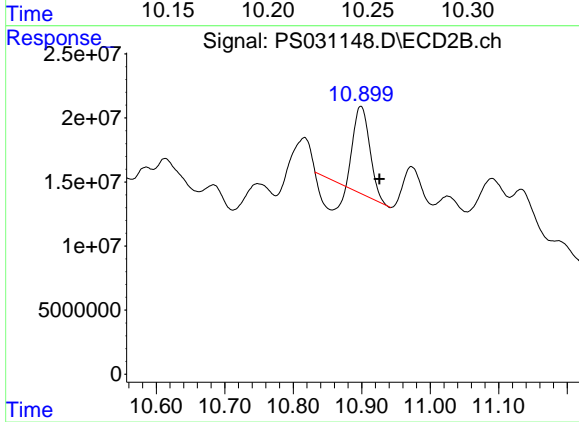
#12 2,4,5-T

R.T.: 10.355 min
 Delta R.T.: -0.003 min
 Response: 832142625
 Conc: 59.47 ng/ml



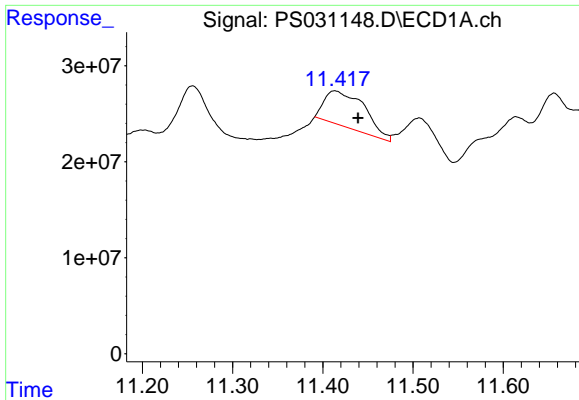
#13 2,4-DB

R.T.: 10.245 min
 Delta R.T.: 0.020 min
 Response: 248361447
 Conc: 114.41 ng/ml



#13 2,4-DB

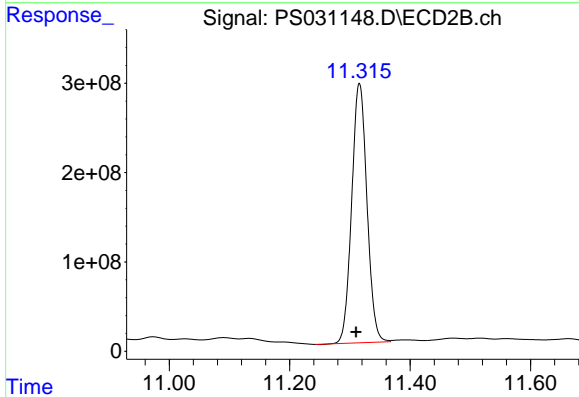
R.T.: 10.899 min
 Delta R.T.: -0.027 min
 Response: 69308173
 Conc: 58.58 ng/ml



#14 DINOSEB

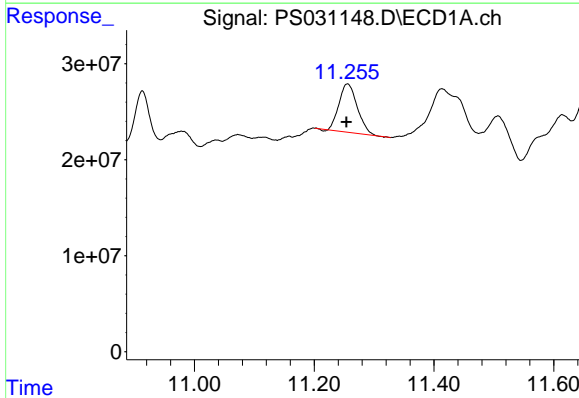
R.T.: 11.413 min
 Delta R.T.: -0.026 min
 Response: 113665719
 Conc: 8.62 ng/ml

Instrument :
 ECD_S
 ClientSampleId :
 TP-49



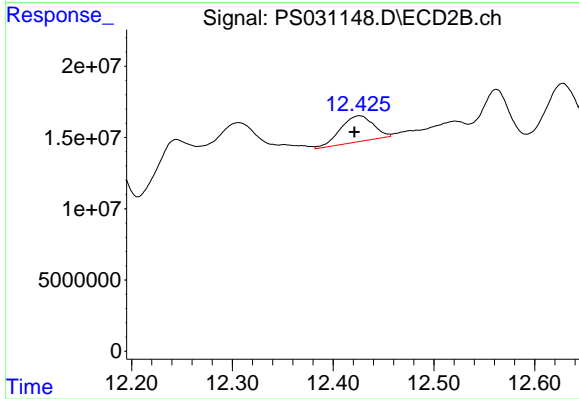
#14 DINOSEB

R.T.: 11.316 min
 Delta R.T.: 0.005 min
 Response: 5112373742
 Conc: 450.37 ng/ml



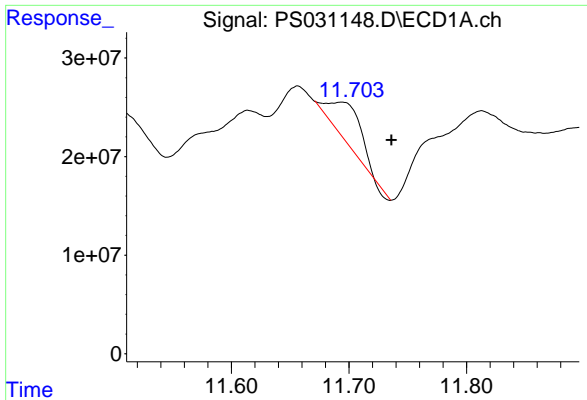
#15 Picloram

R.T.: 11.256 min
 Delta R.T.: 0.002 min
 Response: 106300901
 Conc: 7.29 ng/ml



#15 Picloram

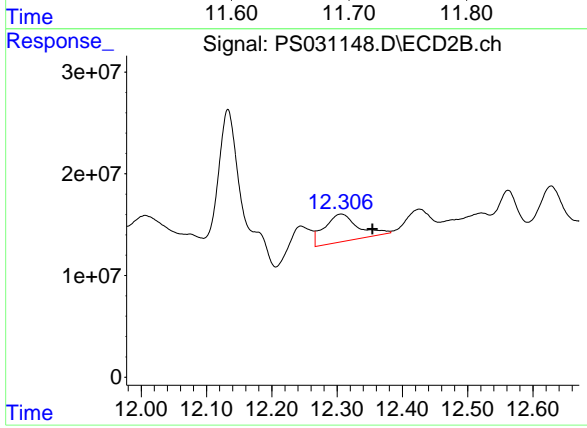
R.T.: 12.426 min
 Delta R.T.: 0.005 min
 Response: 41542504
 Conc: 1.77 ng/ml



#16 DCPA

R.T.: 11.694 min
 Delta R.T.: -0.042 min
 Response: 69264367
 Conc: 2.89 ng/ml

Instrument :
 ECD_S
 ClientSampleId :
 TP-49



#16 DCPA

R.T.: 12.306 min
 Delta R.T.: -0.048 min
 Response: 97046013
 Conc: 4.30 ng/ml