

Data Path : Z:\pestpcbsrv\HPCHEM1\ECD\_S\Data\PS071825\  
 Data File : PS031150.D  
 Signal(s) : Signal #1: ECD1A.ch Signal #2: ECD2B.ch  
 Acq On : 18 Jul 2025 23:47  
 Operator : AR\AJ  
 Sample : Q2543-04  
 Misc :  
 ALS Vial : 23 Sample Multiplier: 1

Instrument :  
 ECD\_S  
 ClientSampleId :

Integration File signal 1: autoint1.e  
 Integration File signal 2: autoint2.e  
 Quant Time: Jul 19 06:18:09 2025  
 Quant Method : Z:\pestpcbsrv\HPCHEM1\ECD\_S\Method\PS071125.M  
 Quant Title : 8080.M  
 QLast Update : Mon Jul 14 05:51:06 2025  
 Response via : Initial Calibration  
 Integrator: ChemStation

Volume Inj. : 1 µl  
 Signal #1 Phase : ZB-MR2 Signal #2 Phase: ZB-MR2  
 Signal #1 Info : 30M x 0.32mm x0.5 Signal #2 Info : 30M x 0.32mm x 0.25µm

Compound	RT#1	RT#2	Resp#1	Resp#2	ng/ml	ng/ml
-----						
System Monitoring Compounds						
4) S 2,4-DCAA	7.324	7.765	1290.5E6	415.3E6	326.284	400.891
Target Compounds						
1) T Dalapon	0.000	2.704	0	2529.5E6	N.D.	889.782
2) T 3,5-DICHL...	6.485	6.717	2359183	4309887	<MDL	2.780 #
3) T 4-Nitroph...	7.110	7.299	44252974	35352142	32.780	20.272 #
5) T DICAMBA	7.527	7.973	15775861	-3917991	1.005	N.D. #
6) T MCPP	7.729f	8.073	34728960	4754914	3.774	2.224 #
7) T MCPA	7.852	8.282f	23216765	90991705	2.129	28.385 #
8) T DICHLORPROP	8.240	8.658f	5159132	196.3E6	1.515	129.195 #
9) T 2,4-D	8.432f	0.000	35044874	0	11.384	N.D. #
10) T Pentachlo...	8.761	9.547	23476692	40035633	<MDL	1.039 #
11) T 2,4,5-TP ...	9.359	9.903f	18688104	216.1E6	1.004	14.726 #
12) T 2,4,5-T	9.640	10.355	79010434	445.8E6	5.194	31.861 #
13) T 2,4-DB	10.207	10.897f	416.3E6	9486856	191.772	8.018 #
14) T DINOSEB	11.410f	11.315	86540631	3051.7E6	6.564	268.837 #
15) T Picloram	11.256	12.426	53817802	24480851	3.693	1.043 #
16) T DCPA	11.692f	12.375	72045737	34068089	3.010	1.511 #
-----						

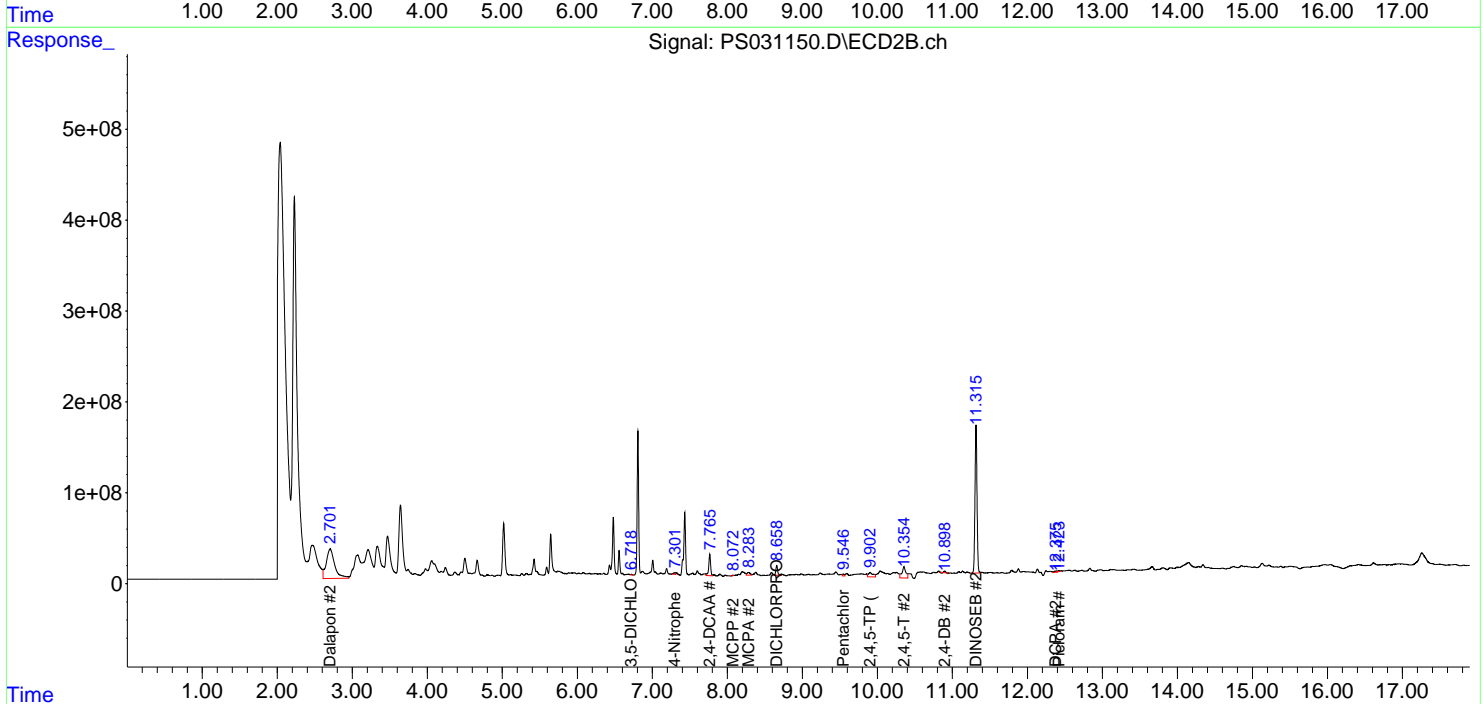
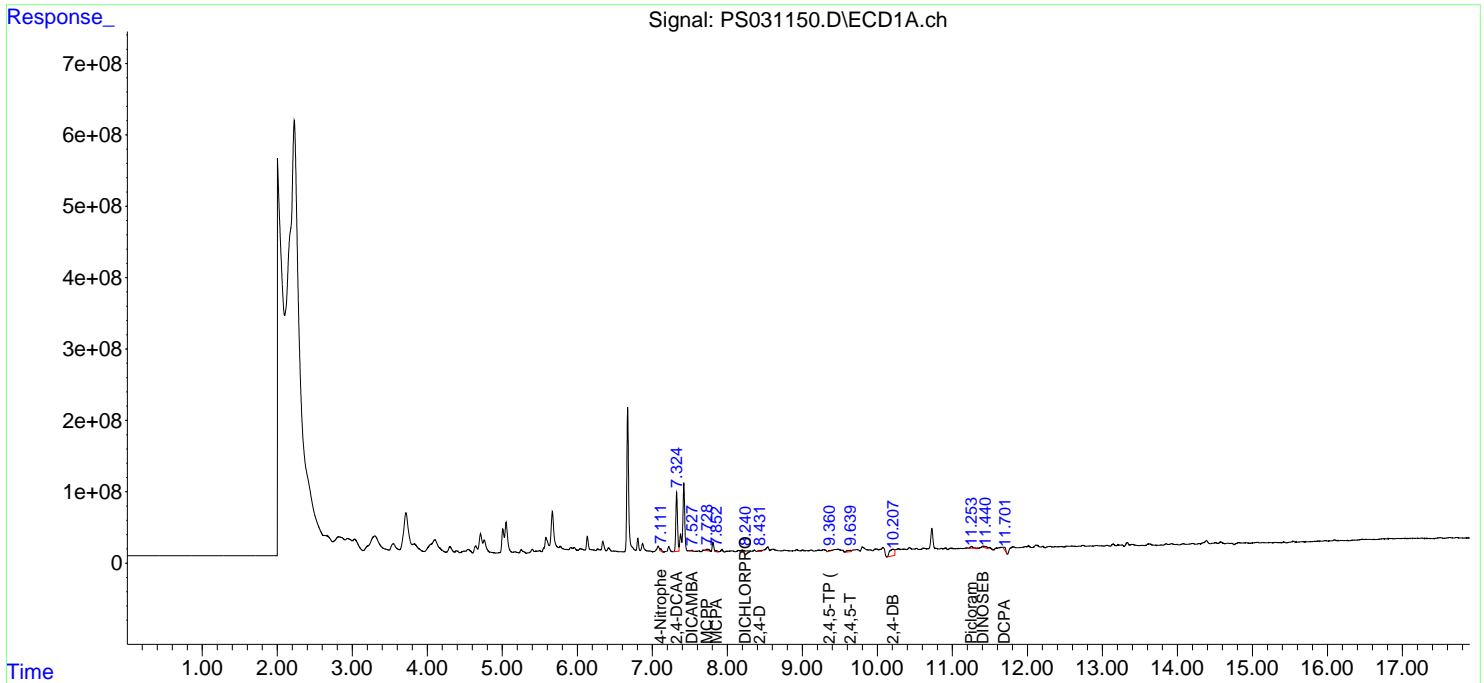
(f)=RT Delta > 1/2 Window (#)=Amounts differ by > 25% (m)=manual int.

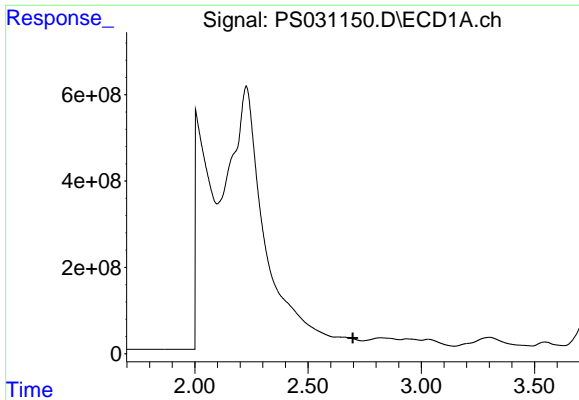
Data Path : Z:\pestpcbsrv\HPCHEM1\ECD\_S\Data\PS071825\  
 Data File : PS031150.D  
 Signal(s) : Signal #1: ECD1A.ch Signal #2: ECD2B.ch  
 Acq On : 18 Jul 2025 23:47  
 Operator : AR\AJ  
 Sample : Q2543-04  
 Misc :  
 ALS Vial : 23 Sample Multiplier: 1

Instrument :  
 ECD\_S  
 ClientSampleId :

Integration File signal 1: autoint1.e  
 Integration File signal 2: autoint2.e  
 Quant Time: Jul 19 06:18:09 2025  
 Quant Method : Z:\pestpcbsrv\HPCHEM1\ECD\_S\Method\PS071125.M  
 Quant Title : 8080.M  
 QLast Update : Mon Jul 14 05:51:06 2025  
 Response via : Initial Calibration  
 Integrator: ChemStation

Volume Inj. : 1 µl  
 Signal #1 Phase : ZB-MR1 Signal #2 Phase: ZB-MR2  
 Signal #1 Info : 30M x 0.32mm x0.5 Signal #2 Info : 30M x 0.32mm x 0.25µm

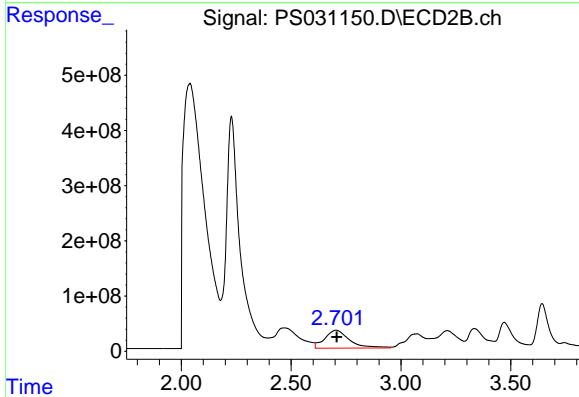




#1 Dalapon

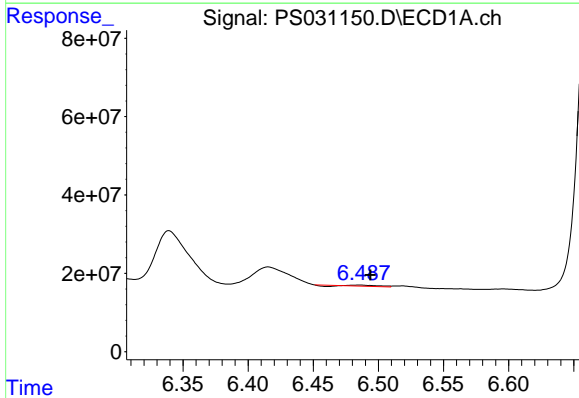
R.T.: 0.000 min  
 Exp R.T.: 2.698 min  
 Response: 0  
 Conc: N.D.

Instrument :  
 ECD\_S  
 ClientSampleId :



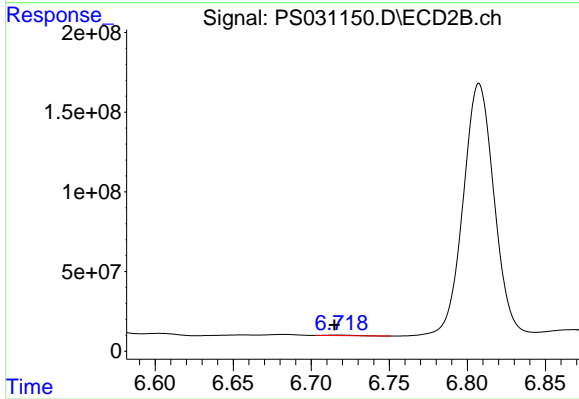
#1 Dalapon

R.T.: 2.704 min  
 Delta R.T.: -0.005 min  
 Response: 2529524431  
 Conc: 889.78 ng/ml



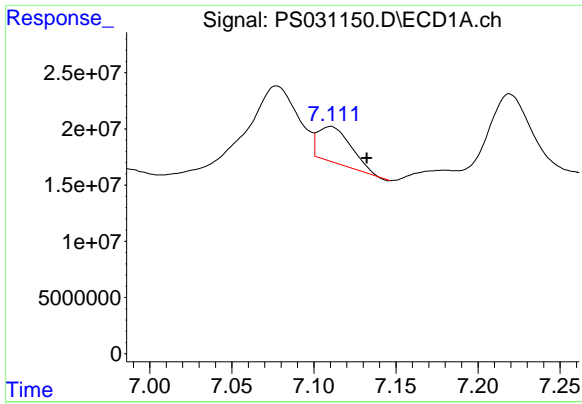
#2 3,5-DICHLOROBENZOIC ACID

R.T.: 6.485 min  
 Delta R.T.: -0.008 min  
 Response: 2359183  
 Conc: N.D.



#2 3,5-DICHLOROBENZOIC ACID

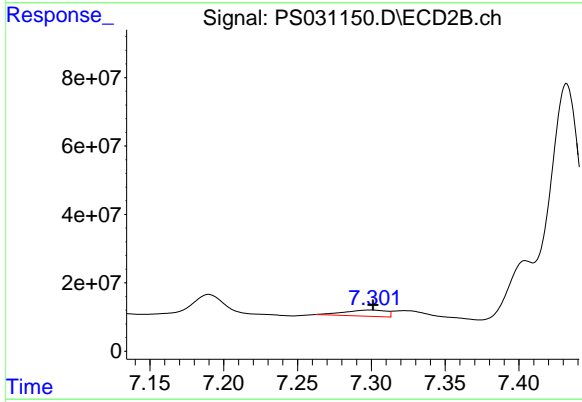
R.T.: 6.717 min  
 Delta R.T.: 0.002 min  
 Response: 4309887  
 Conc: 2.78 ng/ml



#3 4-Nitrophenol

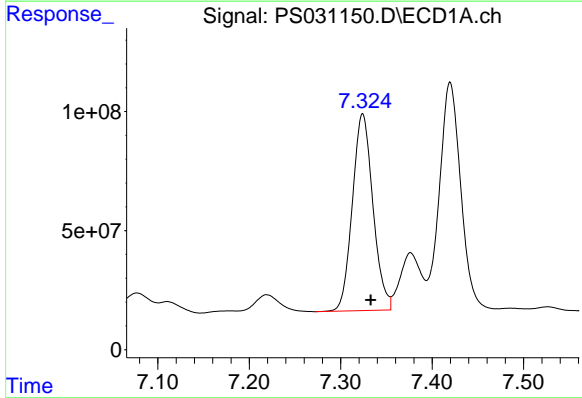
R.T.: 7.110 min  
Delta R.T.: -0.022 min  
Response: 44252974  
Conc: 32.78 ng/ml

Instrument :  
ECD\_S  
ClientSampleId :



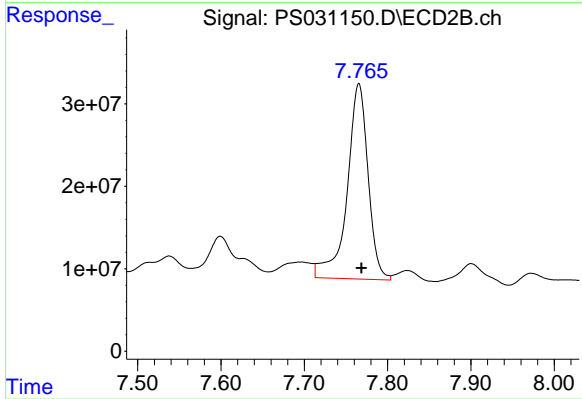
#3 4-Nitrophenol

R.T.: 7.299 min  
Delta R.T.: -0.002 min  
Response: 35352142  
Conc: 20.27 ng/ml



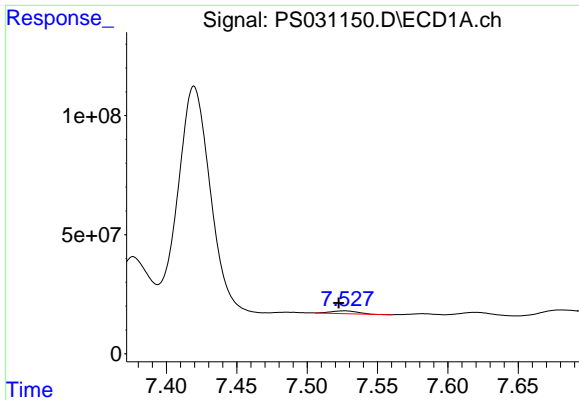
#4 2,4-DCAA

R.T.: 7.324 min  
Delta R.T.: -0.009 min  
Response: 1290478878  
Conc: 326.28 ng/ml



#4 2,4-DCAA

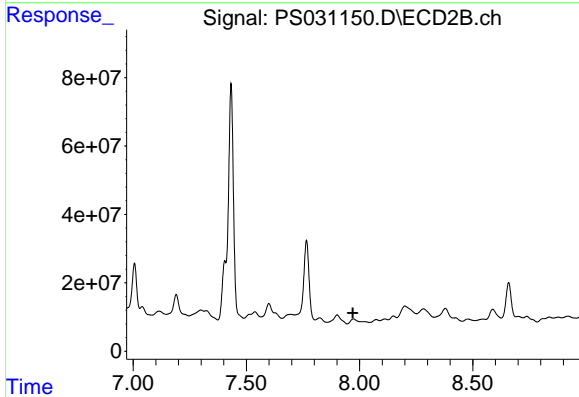
R.T.: 7.765 min  
Delta R.T.: -0.003 min  
Response: 415336302  
Conc: 400.89 ng/ml



#5 DICAMBA

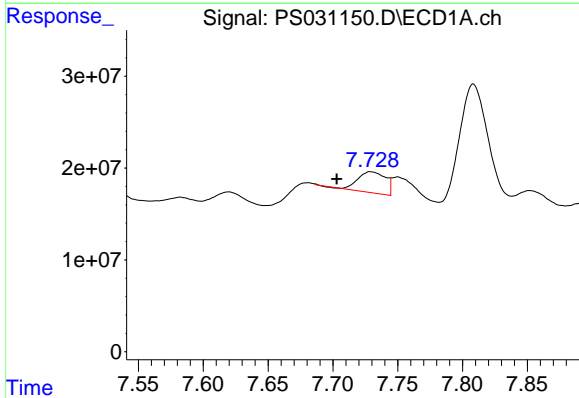
R.T.: 7.527 min  
 Delta R.T.: 0.004 min  
 Response: 15775861  
 Conc: 1.01 ng/ml

Instrument :  
 ECD\_S  
 ClientSampleId :



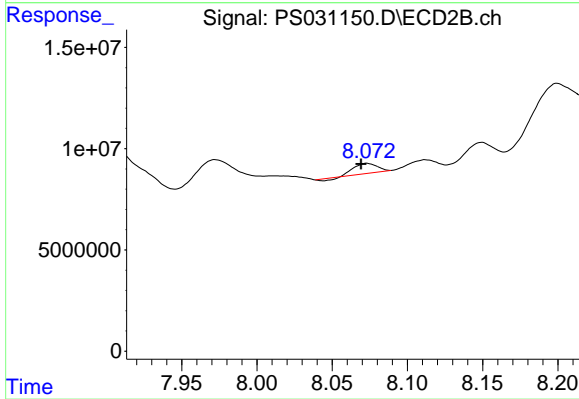
#5 DICAMBA

R.T.: 7.973 min  
 Delta R.T.: 0.002 min  
 Response: -3917991  
 Conc: N.D.



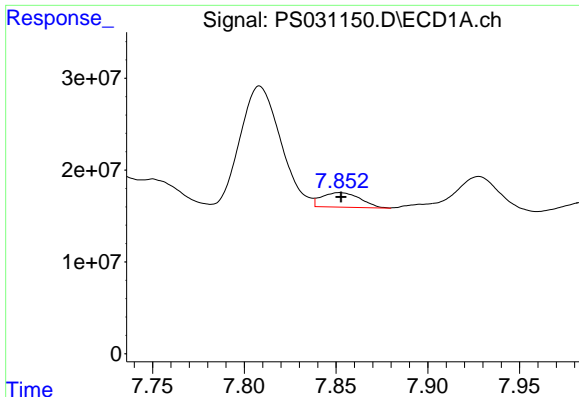
#6 MCPP

R.T.: 7.729 min  
 Delta R.T.: 0.026 min  
 Response: 34728960  
 Conc: 3.77 ug/ml



#6 MCPP

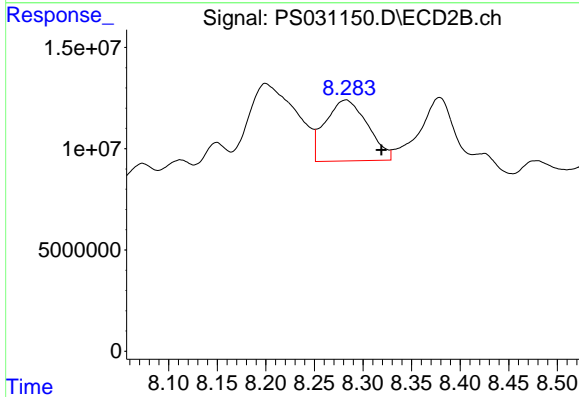
R.T.: 8.073 min  
 Delta R.T.: 0.004 min  
 Response: 4754914  
 Conc: 2.22 ug/ml



#7 MCPA

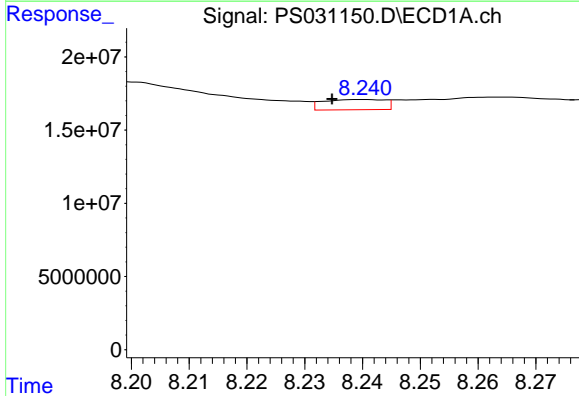
R.T.: 7.852 min  
 Delta R.T.: 0.000 min  
 Response: 23216765  
 Conc: 2.13 ug/ml

Instrument :  
 ECD\_S  
 ClientSampleId :



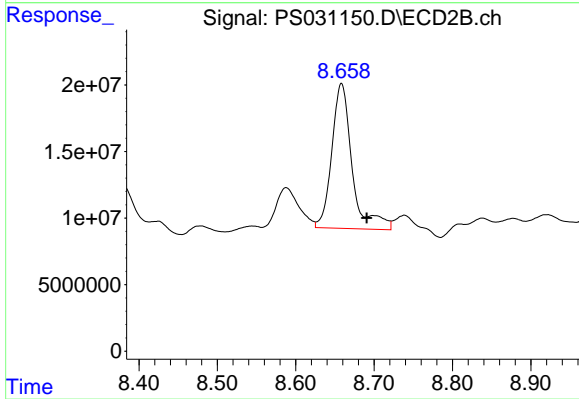
#7 MCPA

R.T.: 8.282 min  
 Delta R.T.: -0.037 min  
 Response: 90991705  
 Conc: 28.38 ug/ml



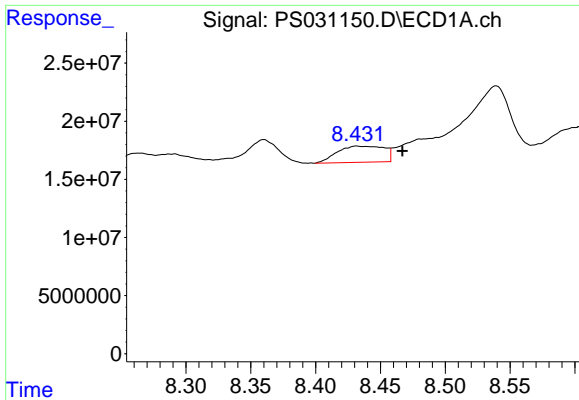
#8 DICHLORPROP

R.T.: 8.240 min  
 Delta R.T.: 0.005 min  
 Response: 5159132  
 Conc: 1.52 ng/ml



#8 DICHLORPROP

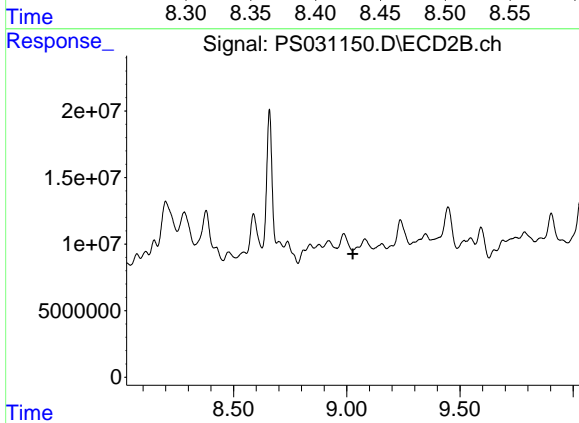
R.T.: 8.658 min  
 Delta R.T.: -0.032 min  
 Response: 196281136  
 Conc: 129.20 ng/ml



#9 2,4-D

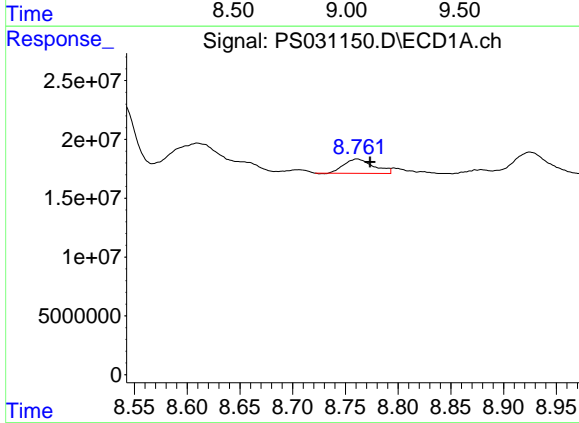
R.T.: 8.432 min  
 Delta R.T.: -0.035 min  
 Response: 35044874  
 Conc: 11.38 ng/ml

Instrument :  
 ECD\_S  
 ClientSampleId :



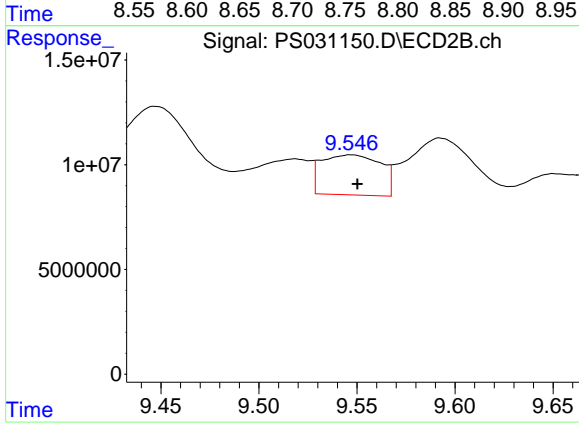
#9 2,4-D

R.T.: 0.000 min  
 Exp R.T. : 9.027 min  
 Response: 0  
 Conc: N.D.



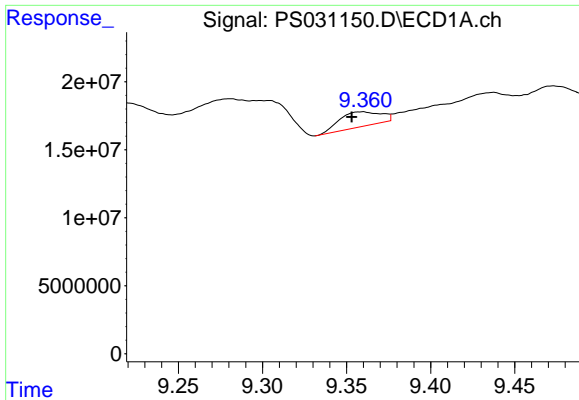
#10 Pentachlorophenol

R.T.: 8.761 min  
 Delta R.T.: -0.012 min  
 Response: 23476692  
 Conc: N.D.



#10 Pentachlorophenol

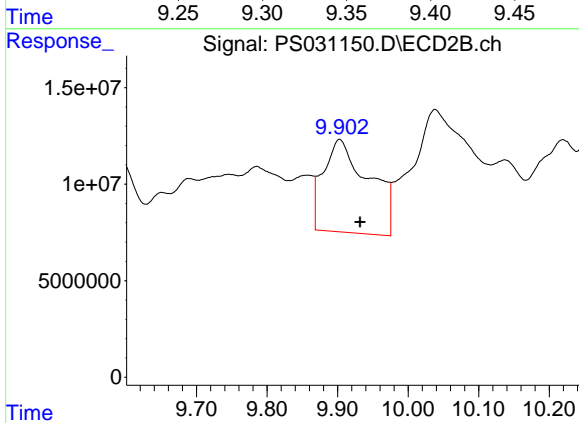
R.T.: 9.547 min  
 Delta R.T.: -0.003 min  
 Response: 40035633  
 Conc: 1.04 ng/ml



#11 2,4,5-TP (SILVEX)

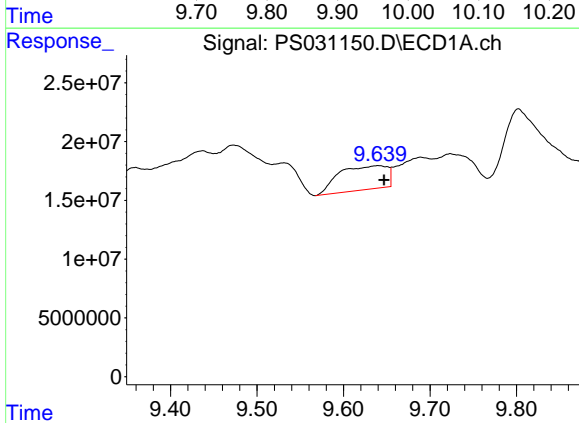
R.T.: 9.359 min  
 Delta R.T.: 0.006 min  
 Response: 18688104  
 Conc: 1.00 ng/ml

Instrument :  
 ECD\_S  
 ClientSampleId :



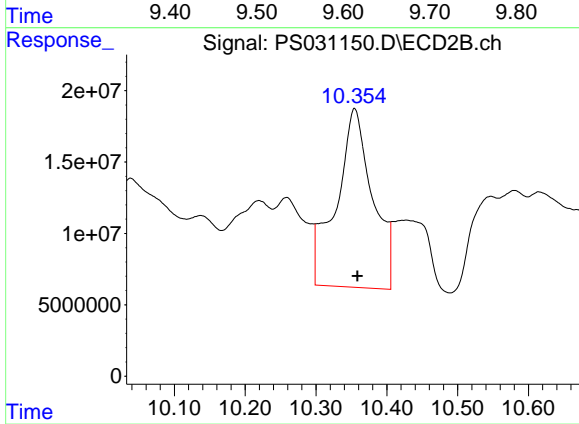
#11 2,4,5-TP (SILVEX)

R.T.: 9.903 min  
 Delta R.T.: -0.029 min  
 Response: 216112914  
 Conc: 14.73 ng/ml



#12 2,4,5-T

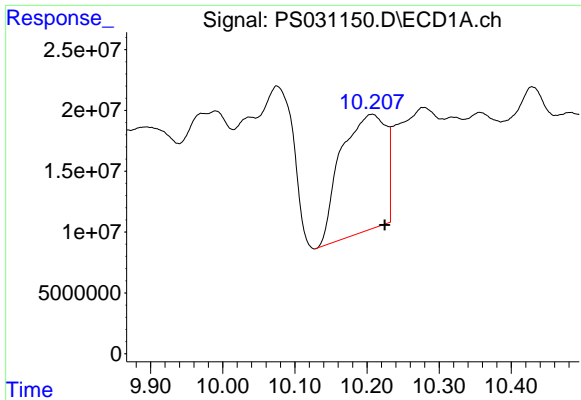
R.T.: 9.640 min  
 Delta R.T.: -0.007 min  
 Response: 79010434  
 Conc: 5.19 ng/ml



#12 2,4,5-T

R.T.: 10.355 min  
 Delta R.T.: -0.004 min  
 Response: 445790243  
 Conc: 31.86 ng/ml

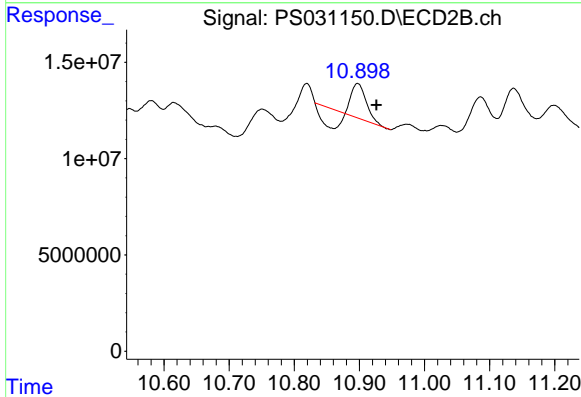




#13 2,4-DB

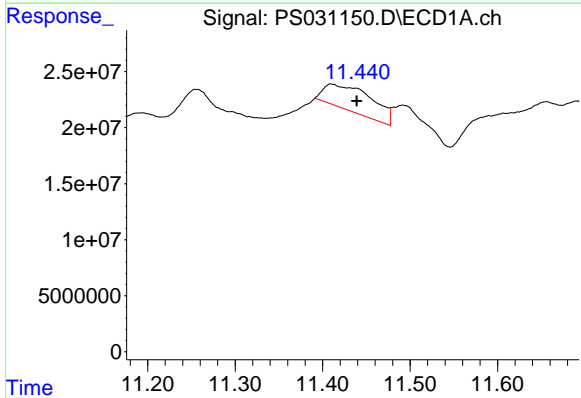
R.T.: 10.207 min  
 Delta R.T.: -0.018 min  
 Response: 416297107  
 Conc: 191.77 ng/ml

Instrument :  
 ECD\_S  
 ClientSampleId :



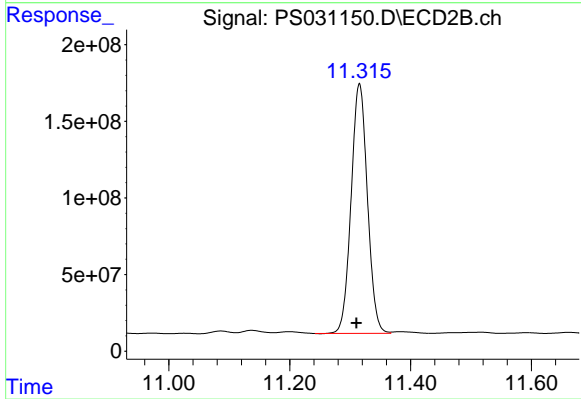
#13 2,4-DB

R.T.: 10.897 min  
 Delta R.T.: -0.028 min  
 Response: 9486856  
 Conc: 8.02 ng/ml



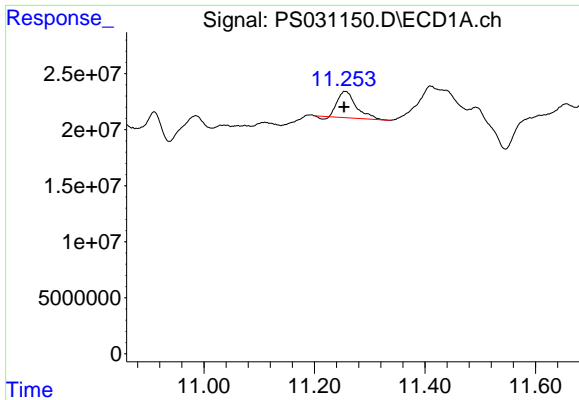
#14 DINOSEB

R.T.: 11.410 min  
 Delta R.T.: -0.029 min  
 Response: 86540631  
 Conc: 6.56 ng/ml



#14 DINOSEB

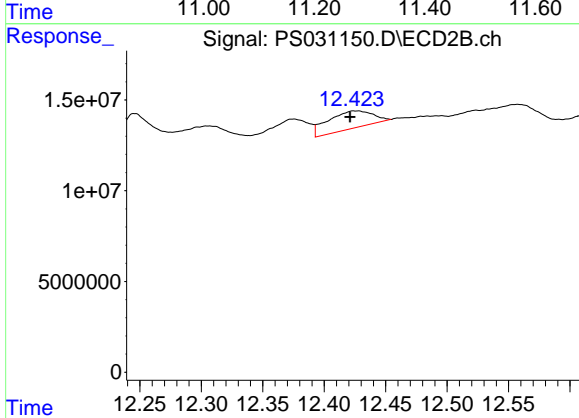
R.T.: 11.315 min  
 Delta R.T.: 0.005 min  
 Response: 3051703349  
 Conc: 268.84 ng/ml



#15 Picloram

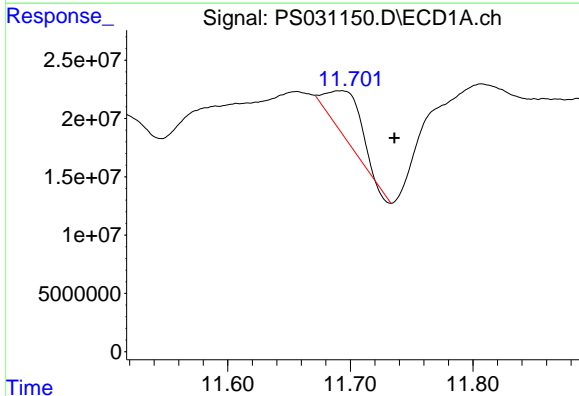
R.T.: 11.256 min  
 Delta R.T.: 0.002 min  
 Response: 53817802  
 Conc: 3.69 ng/ml

Instrument :  
 ECD\_S  
 ClientSampleId :



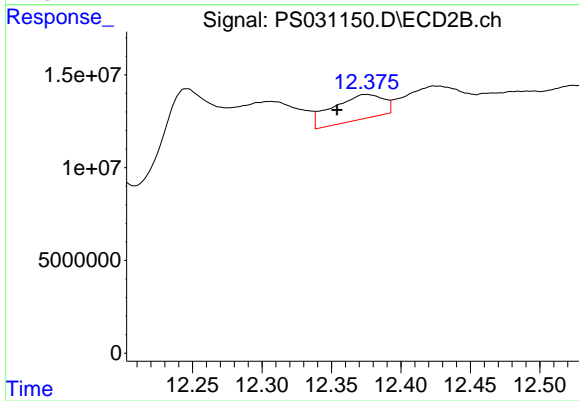
#15 Picloram

R.T.: 12.426 min  
 Delta R.T.: 0.005 min  
 Response: 24480851  
 Conc: 1.04 ng/ml



#16 DCPA

R.T.: 11.692 min  
 Delta R.T.: -0.044 min  
 Response: 72045737  
 Conc: 3.01 ng/ml



#16 DCPA

R.T.: 12.375 min  
 Delta R.T.: 0.021 min  
 Response: 34068089  
 Conc: 1.51 ng/ml