

Data Path : Z:\pestpcbsrv\HPCHEM1\ECD_S\Data\PS071825\
 Data File : PS031151.D
 Signal(s) : Signal #1: ECD1A.ch Signal #2: ECD2B.ch
 Acq On : 19 Jul 2025 00:11
 Operator : AR\AJ
 Sample : Q25455-01
 Misc :
 ALS Vial : 24 Sample Multiplier: 1

Instrument :
 ECD_S
 ClientSampleId :
 OU4-TS-29-070925

Integration File signal 1: autoint1.e
 Integration File signal 2: autoint2.e
 Quant Time: Jul 19 06:18:22 2025
 Quant Method : Z:\pestpcbsrv\HPCHEM1\ECD_S\Method\PS071125.M
 Quant Title : 8080.M
 QLast Update : Mon Jul 14 05:51:06 2025
 Response via : Initial Calibration
 Integrator: ChemStation

Volume Inj. : 1 µl
 Signal #1 Phase : ZB-MR2 Signal #2 Phase: ZB-MR2
 Signal #1 Info : 30M x 0.32mm x0.5 Signal #2 Info : 30M x 0.32mm x 0.25µm

	Compound	RT#1	RT#2	Resp#1	Resp#2	ng/ml	ng/ml

System Monitoring Compounds							
4) S	2,4-DCAA	7.324	7.765	242.4E6	104.1E6	61.286	100.447 #
Target Compounds							
1) T	Dalapon	2.650f	2.693	1740.1E6	1989.4E6	285.649	699.798 #
2) T	3,5-DICHL...	6.507	6.683f	8096875	19596120	1.546	12.640 #
3) T	4-Nitroph...	0.000	7.292	0	34426259	N.D.	19.741
5) T	DICAMBA	7.527	7.973	14654550	6137152	<MDL	<MDL #
6) T	MCP P	7.751f	8.072	84780392	29591178	9.214	13.841 #
7) T	MCPA	7.853	8.283f	54362490	133.1E6	4.984	41.517 #
8) T	DICHLORPROP	8.268f	8.702	61822060	33450474	18.155	22.018
9) T	2,4-D	8.440f	9.047	6666502	9802559	2.166	5.768 #
10) T	Pentachlo...	8.787	9.543	21957999	18855167	<MDL	<MDL #
11) T	2,4,5-TP ...	9.351	9.957f	30012286	37382781	1.613	2.547 #
12) T	2,4,5-T	9.674f	10.356	106.4E6	390.1E6	6.997	27.878 #
14) T	DINOSEB	11.434	11.315	35684135	1853.5E6	2.707	163.278 #
15) T	Picloram	11.254	12.426	26720594	20462330	1.834	<MDL #
16) T	DCPA	11.690f	12.317f	25204282	17901368	1.053	<MDL #

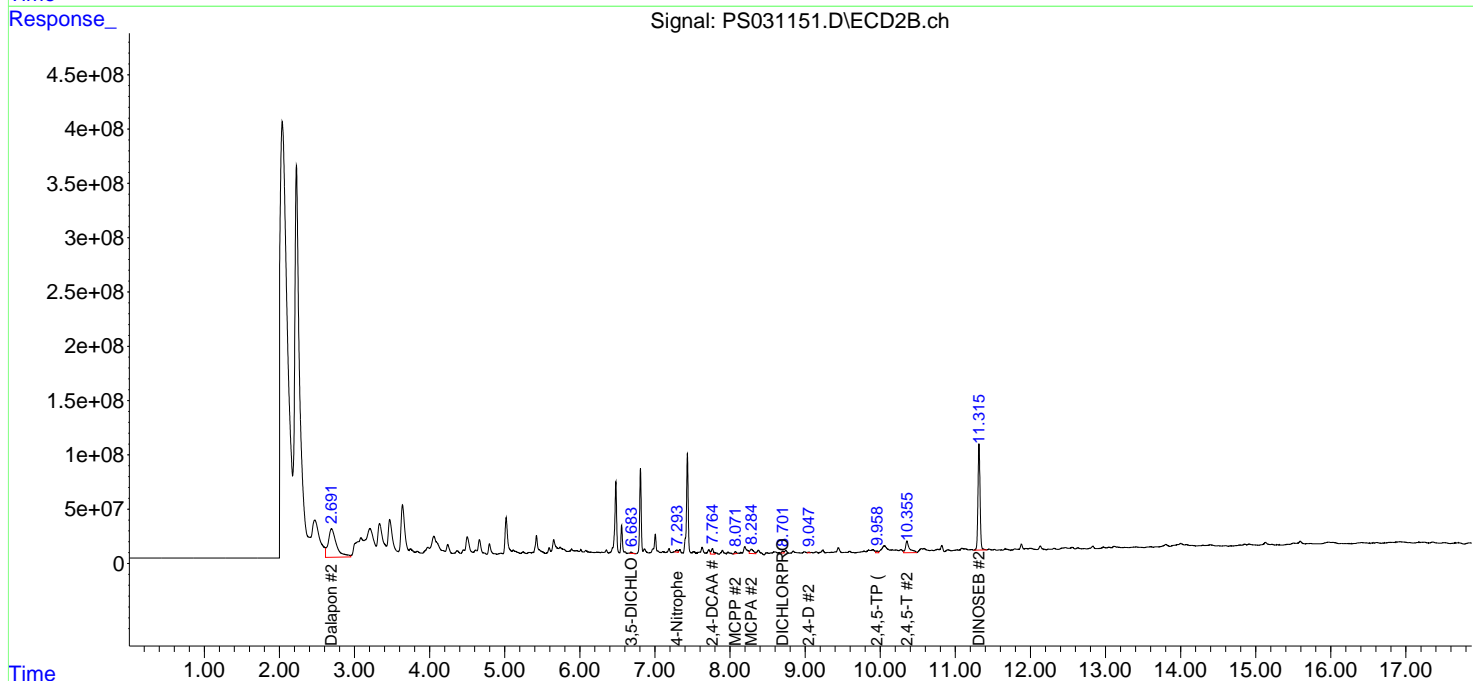
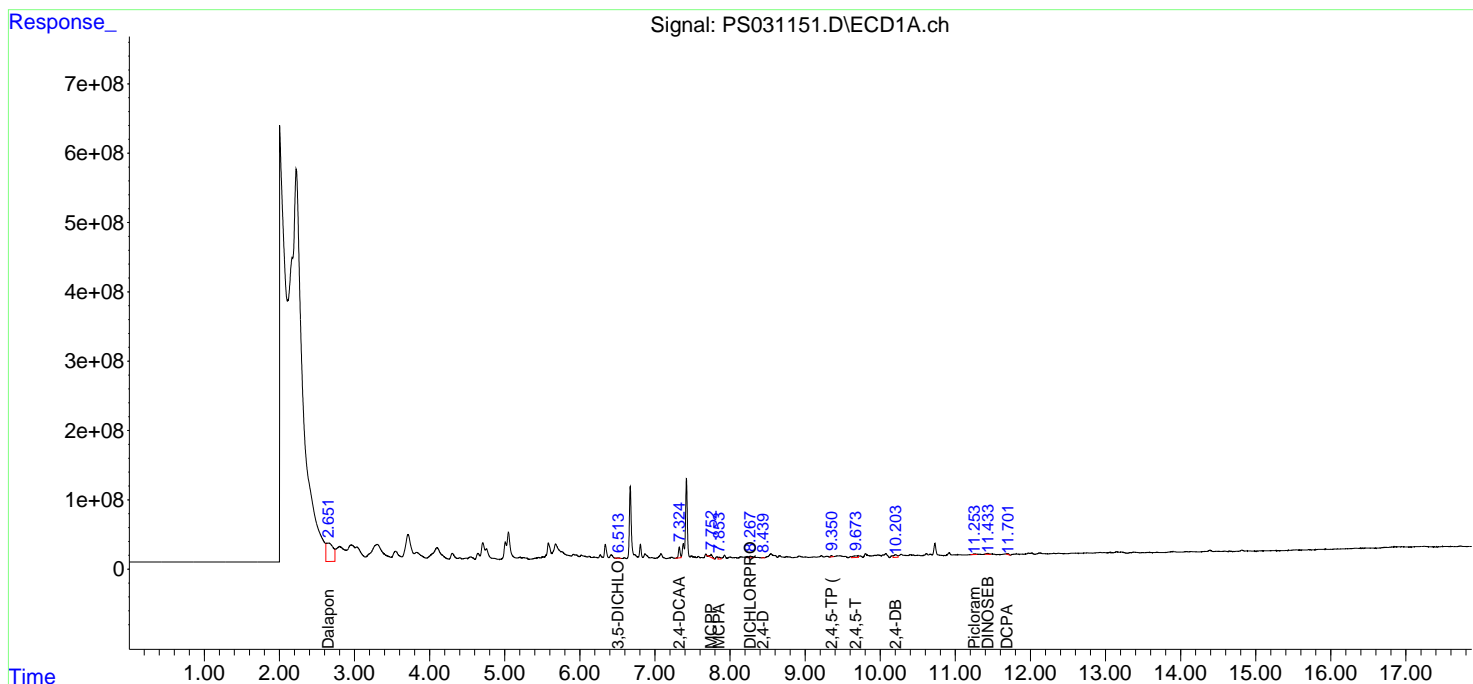
(f)=RT Delta > 1/2 Window (#)=Amounts differ by > 25% (m)=manual int.

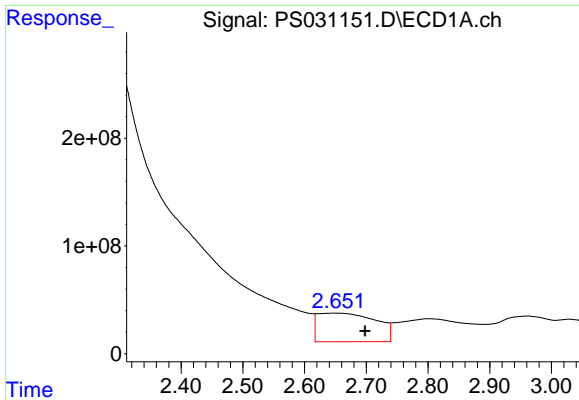
Data Path : Z:\pestpcbsrv\HPCHEM1\ECD_S\Data\PS071825\
 Data File : PS031151.D
 Signal(s) : Signal #1: ECD1A.ch Signal #2: ECD2B.ch
 Acq On : 19 Jul 2025 00:11
 Operator : AR\AJ
 Sample : Q25455-01
 Misc :
 ALS Vial : 24 Sample Multiplier: 1

Instrument :
 ECD_S
 ClientSampleId :
 OU4-TS-29-070925

Integration File signal 1: autoint1.e
 Integration File signal 2: autoint2.e
 Quant Time: Jul 19 06:18:22 2025
 Quant Method : Z:\pestpcbsrv\HPCHEM1\ECD_S\Method\PS071125.M
 Quant Title : 8080.M
 QLast Update : Mon Jul 14 05:51:06 2025
 Response via : Initial Calibration
 Integrator: ChemStation

Volume Inj. : 1 µl
 Signal #1 Phase : ZB-MR1 Signal #2 Phase: ZB-MR2
 Signal #1 Info : 30M x 0.32mm x0.5 Signal #2 Info : 30M x 0.32mm x 0.25µm

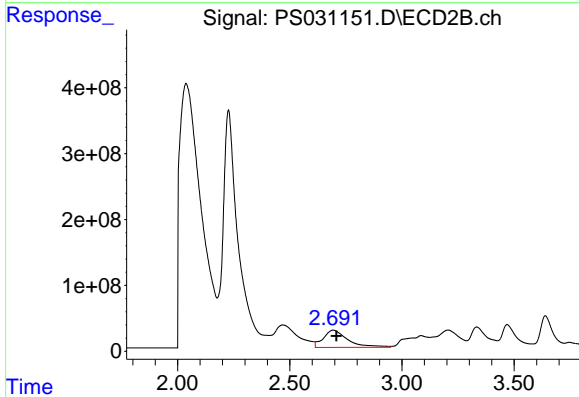




#1 Dalapon

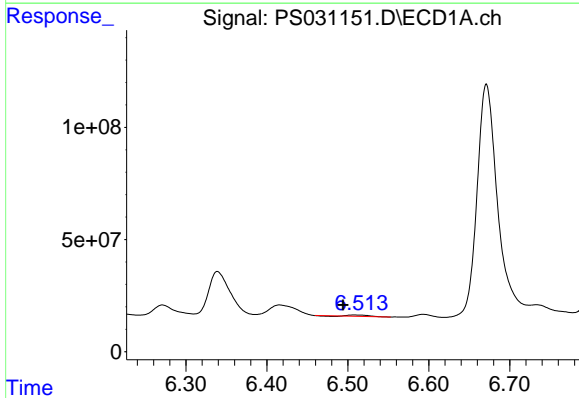
R.T.: 2.650 min
 Delta R.T.: -0.048 min
 Response: 1740095066
 Conc: 285.65 ng/ml

Instrument :
 ECD_S
 ClientSampleId :
 OU4-TS-29-070925



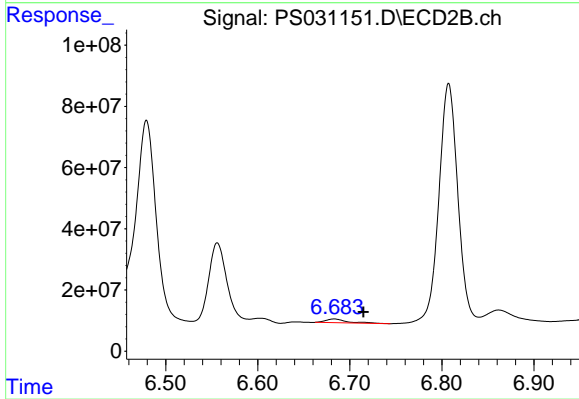
#1 Dalapon

R.T.: 2.693 min
 Delta R.T.: -0.015 min
 Response: 1989427870
 Conc: 699.80 ng/ml



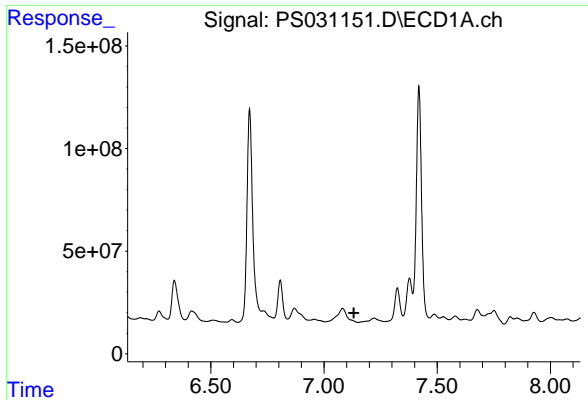
#2 3,5-DICHLOROBENZOIC ACID

R.T.: 6.507 min
 Delta R.T.: 0.013 min
 Response: 8096875
 Conc: 1.55 ng/ml



#2 3,5-DICHLOROBENZOIC ACID

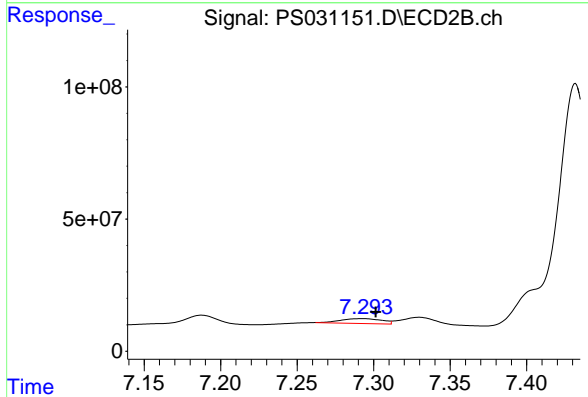
R.T.: 6.683 min
 Delta R.T.: -0.032 min
 Response: 19596120
 Conc: 12.64 ng/ml



#3 4-Nitrophenol

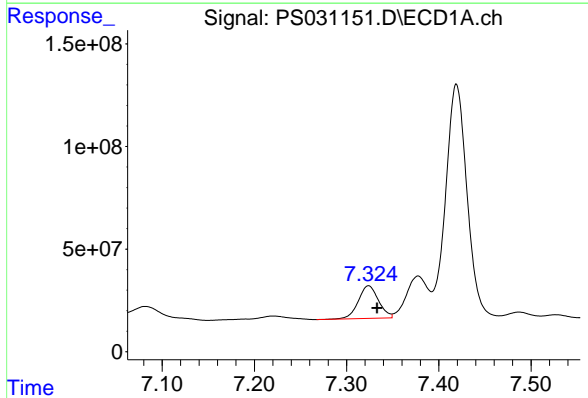
R.T.: 0.000 min
 Exp R.T.: 7.132 min
 Response: 0
 Conc: N.D.

Instrument :
 ECD_S
 ClientSampleId :
 OU4-TS-29-070925



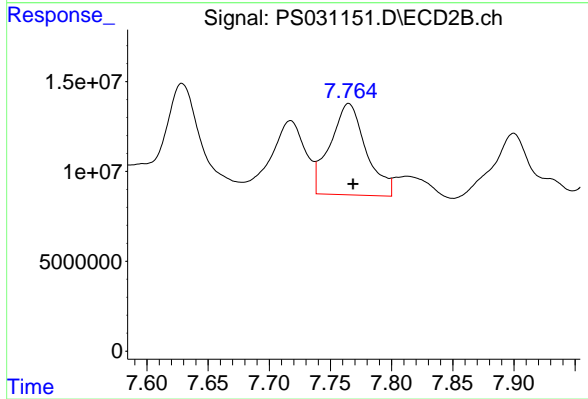
#3 4-Nitrophenol

R.T.: 7.292 min
 Delta R.T.: -0.009 min
 Response: 34426259
 Conc: 19.74 ng/ml



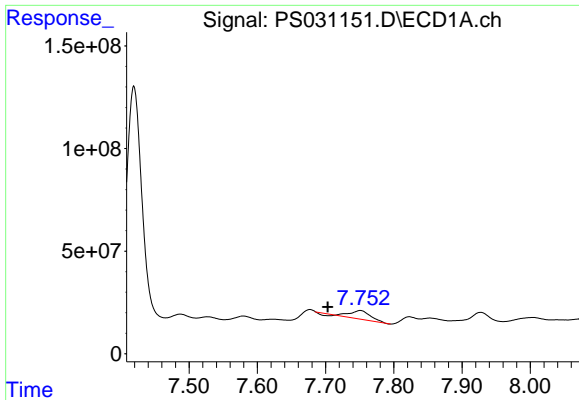
#4 2,4-DCAA

R.T.: 7.324 min
 Delta R.T.: -0.009 min
 Response: 242391972
 Conc: 61.29 ng/ml



#4 2,4-DCAA

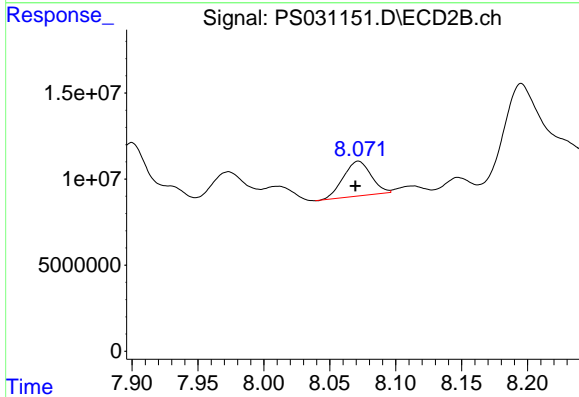
R.T.: 7.765 min
 Delta R.T.: -0.004 min
 Response: 104066251
 Conc: 100.45 ng/ml



#6 MCPP

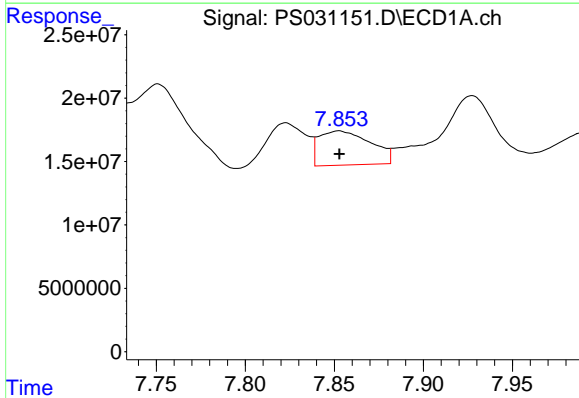
R.T.: 7.751 min
 Delta R.T.: 0.048 min
 Response: 84780392
 Conc: 9.21 ug/ml

Instrument :
 ECD_S
 ClientSampleId :
 OU4-TS-29-070925



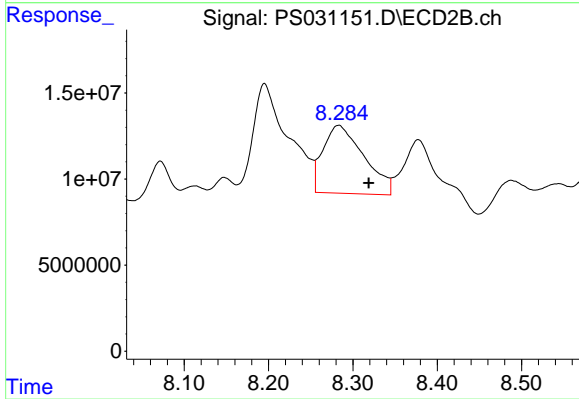
#6 MCPP

R.T.: 8.072 min
 Delta R.T.: 0.002 min
 Response: 29591178
 Conc: 13.84 ug/ml



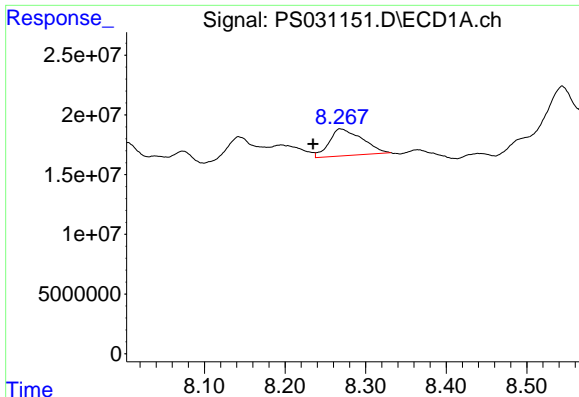
#7 MCPA

R.T.: 7.853 min
 Delta R.T.: 0.000 min
 Response: 54362490
 Conc: 4.98 ug/ml



#7 MCPA

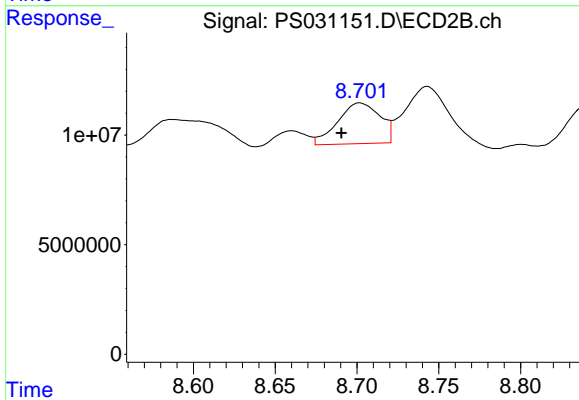
R.T.: 8.283 min
 Delta R.T.: -0.036 min
 Response: 133089062
 Conc: 41.52 ug/ml



#8 DICHLORPROP

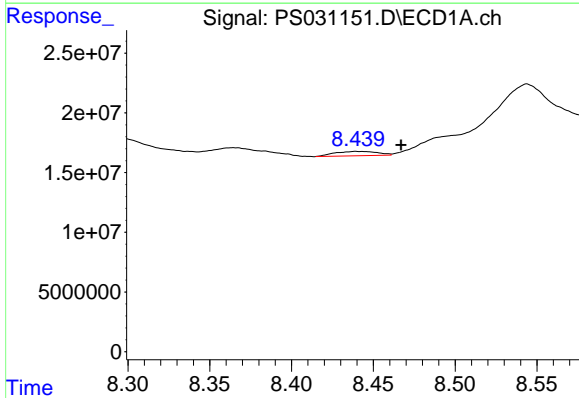
R.T.: 8.268 min
 Delta R.T.: 0.034 min
 Response: 61822060
 Conc: 18.16 ng/ml

Instrument :
 ECD_S
 ClientSampleId :
 OU4-TS-29-070925



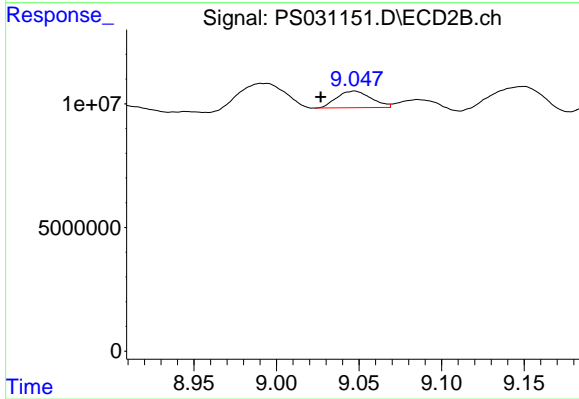
#8 DICHLORPROP

R.T.: 8.702 min
 Delta R.T.: 0.011 min
 Response: 33450474
 Conc: 22.02 ng/ml



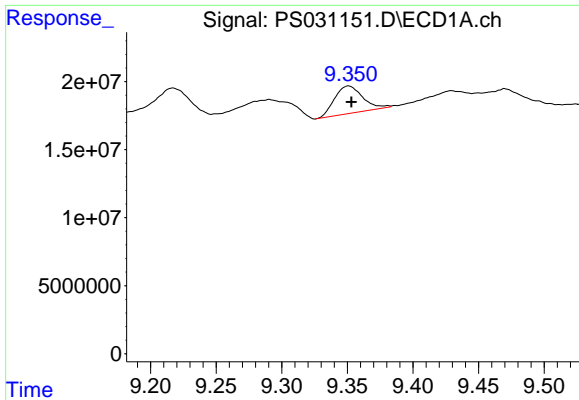
#9 2,4-D

R.T.: 8.440 min
 Delta R.T.: -0.027 min
 Response: 6666502
 Conc: 2.17 ng/ml



#9 2,4-D

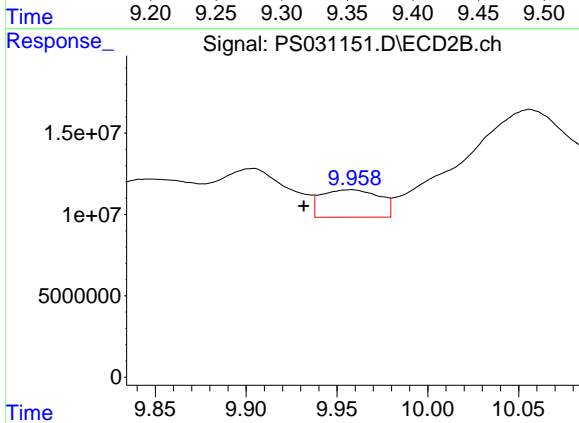
R.T.: 9.047 min
 Delta R.T.: 0.020 min
 Response: 9802559
 Conc: 5.77 ng/ml



#11 2,4,5-TP (SILVEX)

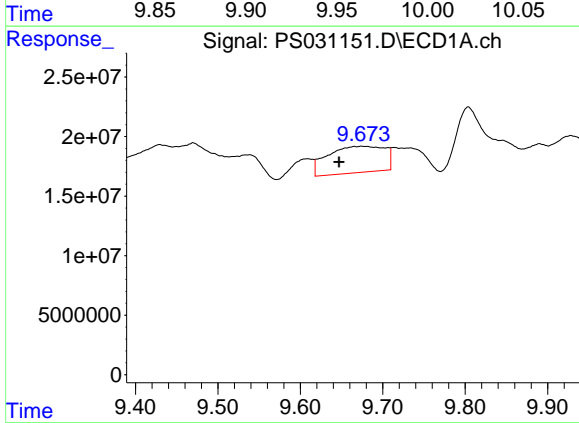
R.T.: 9.351 min
 Delta R.T.: -0.002 min
 Response: 30012286
 Conc: 1.61 ng/ml

Instrument :
 ECD_S
 ClientSampleId :
 OU4-TS-29-070925



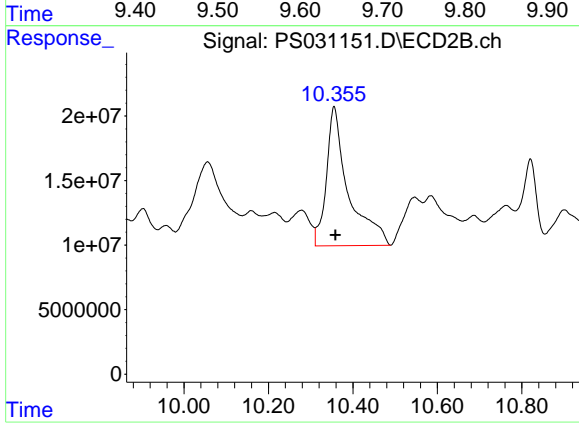
#11 2,4,5-TP (SILVEX)

R.T.: 9.957 min
 Delta R.T.: 0.026 min
 Response: 37382781
 Conc: 2.55 ng/ml



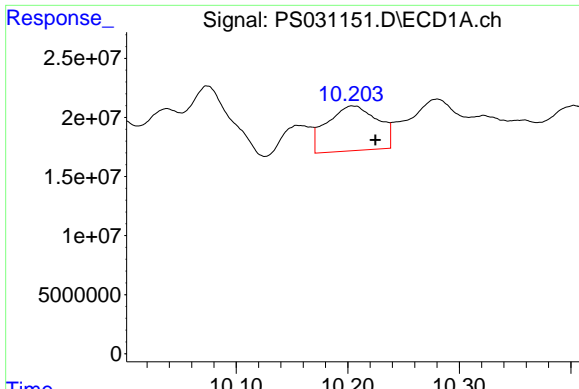
#12 2,4,5-T

R.T.: 9.674 min
 Delta R.T.: 0.027 min
 Response: 106448098
 Conc: 7.00 ng/ml



#12 2,4,5-T

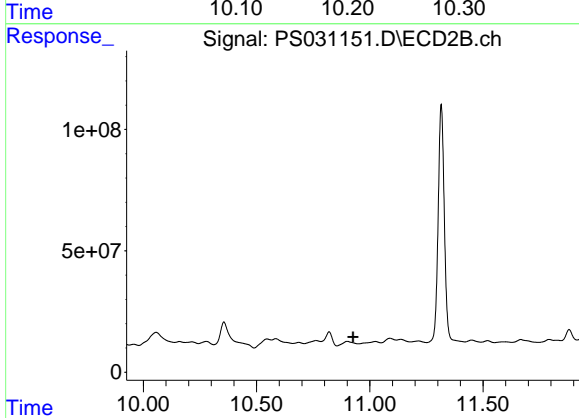
R.T.: 10.356 min
 Delta R.T.: -0.003 min
 Response: 390065928
 Conc: 27.88 ng/ml



#13 2,4-DB

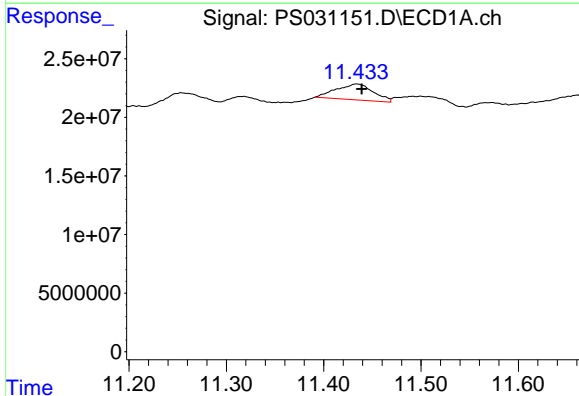
R.T.: 10.204 min
 Delta R.T.: -0.021 min
 Response: 119166122
 Conc: 54.90 ng/ml

Instrument :
 ECD_S
 ClientSampleId :
 OU4-TS-29-070925



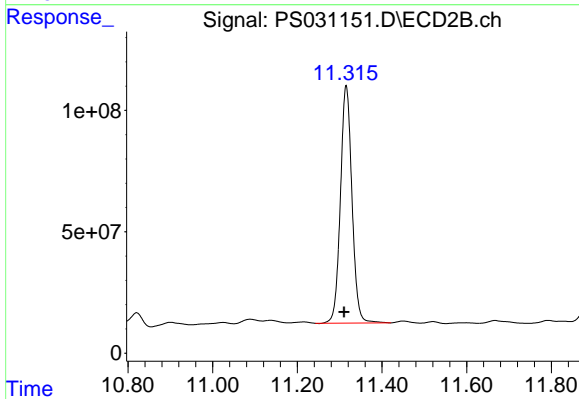
#13 2,4-DB

R.T.: 10.901 min
 Delta R.T.: -0.025 min
 Response: -79744149
 Conc: N.D.



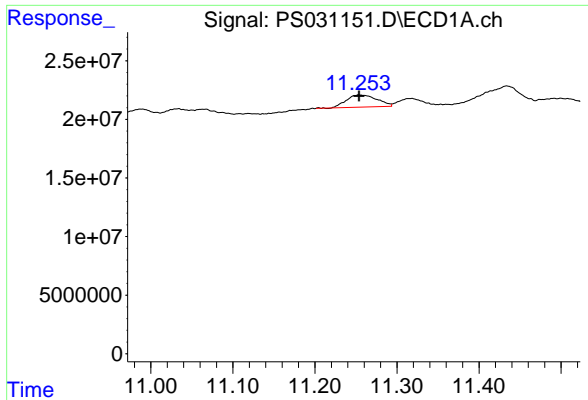
#14 DINOSEB

R.T.: 11.434 min
 Delta R.T.: -0.005 min
 Response: 35684135
 Conc: 2.71 ng/ml



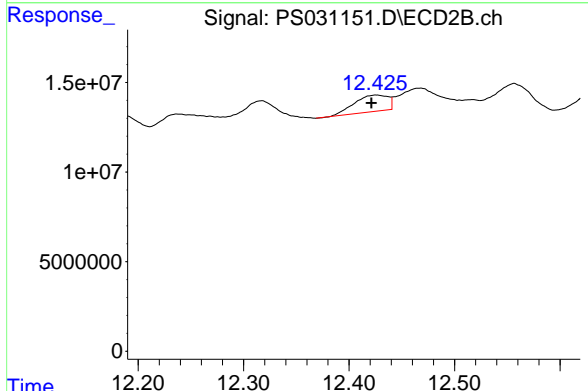
#14 DINOSEB

R.T.: 11.315 min
 Delta R.T.: 0.005 min
 Response: 1853450442
 Conc: 163.28 ng/ml

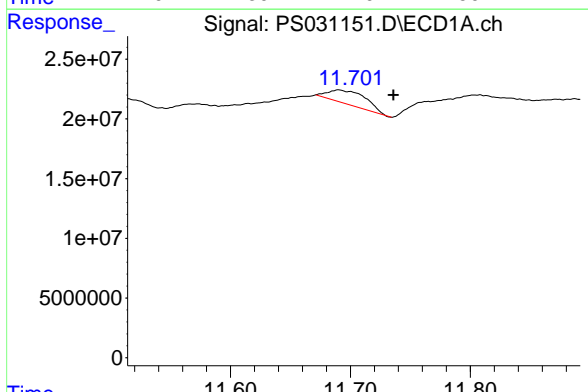


#15 Picloram
 R.T.: 11.254 min
 Delta R.T.: 0.000 min
 Response: 26720594
 Conc: 1.83 ng/ml

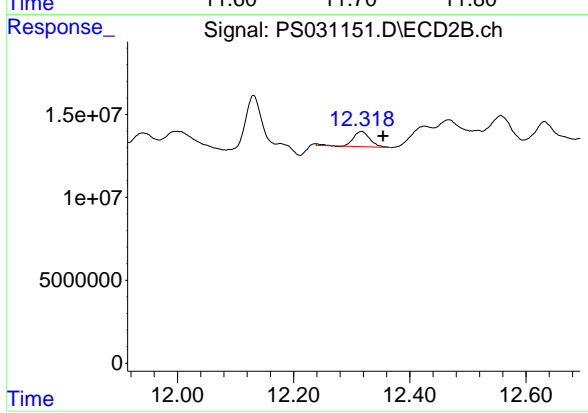
Instrument : ECD_S
 ClientSampleId : OU4-TS-29-070925



#15 Picloram
 R.T.: 12.426 min
 Delta R.T.: 0.004 min
 Response: 20462330
 Conc: N.D.



#16 DCPA
 R.T.: 11.690 min
 Delta R.T.: -0.046 min
 Response: 25204282
 Conc: 1.05 ng/ml



#16 DCPA
 R.T.: 12.317 min
 Delta R.T.: -0.037 min
 Response: 17901368
 Conc: N.D.