

Data Path : Z:\pestpcbsrv\HPCHEM1\ECD\_S\Data\PS072220\  
 Data File : PS011313.D  
 Signal(s) : Signal #1: ECD1A.ch Signal #2: ECD2B.ch  
 Acq On : 22 Jul 2020 11:34  
 Operator : DD\AJ  
 Sample : HSTDCCC750  
 Misc :  
 ALS Vial : 3 Sample Multiplier: 1

Instrument :  
 ECD\_S  
 ClientSampleId :

Integration File signal 1: autoint1.e  
 Integration File signal 2: autoint2.e  
 Quant Time: Jul 22 12:30:57 2020  
 Quant Method : Z:\pestpcbsrv\HPCHEM1\ECD\_S\Method\PS071320.M  
 Quant Title : 8080.M  
 QLast Update : Mon Jul 13 16:10:29 2020  
 Response via : Initial Calibration  
 Integrator: ChemStation

Volume Inj. : 2 µl  
 Signal #1 Phase : Rtx-CLPesticides Signal #2 Phase: Rtx-CLPesticides2  
 Signal #1 Info : 30M x 0.32mm x0.5 Signal #2 Info : 30M x 0.32mm x 0.25µm

	Compound	RT#1	RT#2	Resp#1	Resp#2	ng/ml	ng/ml
-----							
System Monitoring Compounds							
4) S	2,4-DCAA	7.226	6.917	745.9E6	433.1E6	768.693	769.185
Target Compounds							
1) T	Dalapon	3.037	2.624	823.0E6	506.5E6	683.923	659.797
2) T	3,5-DICHL...	6.439	6.068	962.0E6	604.1E6	718.863	719.289
3) T	4-Nitroph...	7.056	6.524	312.4E6	231.0E6	708.562	704.589
5) T	DICAMBA	7.417	7.086	2827.7E6	1670.7E6	729.567	729.590
6) T	MCP P	7.587	7.184	219.4E6	140.4E6	72.463	73.562
7) T	MCPA	7.737	7.399	308.6E6	207.9E6	72.361	72.118
8) T	DICHLORPROP	8.109	7.712	669.5E6	434.0E6	714.104	721.095
9) T	2,4-D	8.339	8.006	686.4E6	544.3E6	721.655	726.089
10) T	Pentachlo...	8.650	8.436	9626.7E6	5053.5E6	728.265	725.077
11) T	2,4,5-TP ...	9.198	8.796	3847.1E6	2263.0E6	726.455	740.211
12) T	2,4,5-T	9.483	9.175	3666.7E6	2241.9E6	726.673	739.161
13) T	2,4-DB	10.036	9.682	462.7E6	312.6E6	717.938	731.157
14) T	DINOSEB	11.197	10.015	2805.4E6	1610.5E6	727.792	750.847
15) T	Picloram	11.018	10.997	4399.6E6	3093.6E6	697.262	707.367
16) T	DCPA	11.462	10.943	4601.0E6	2804.3E6	714.115	741.488

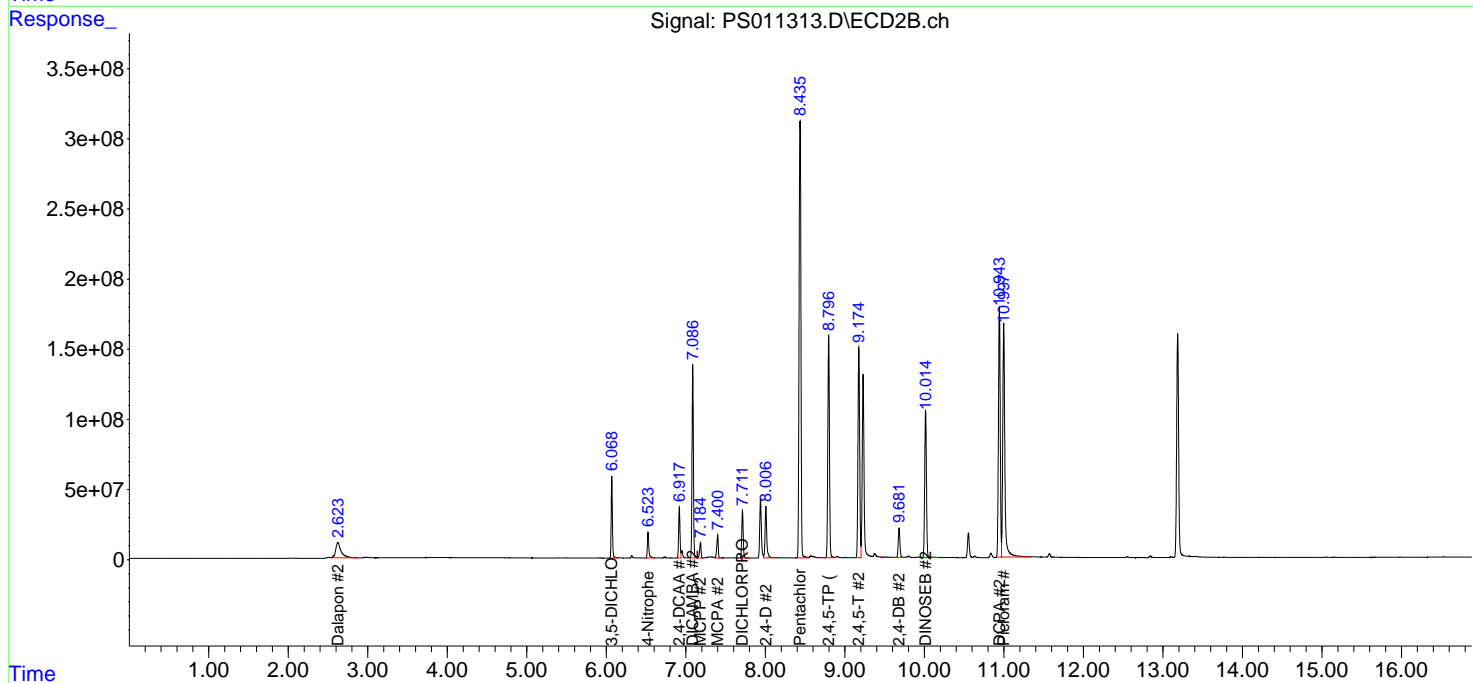
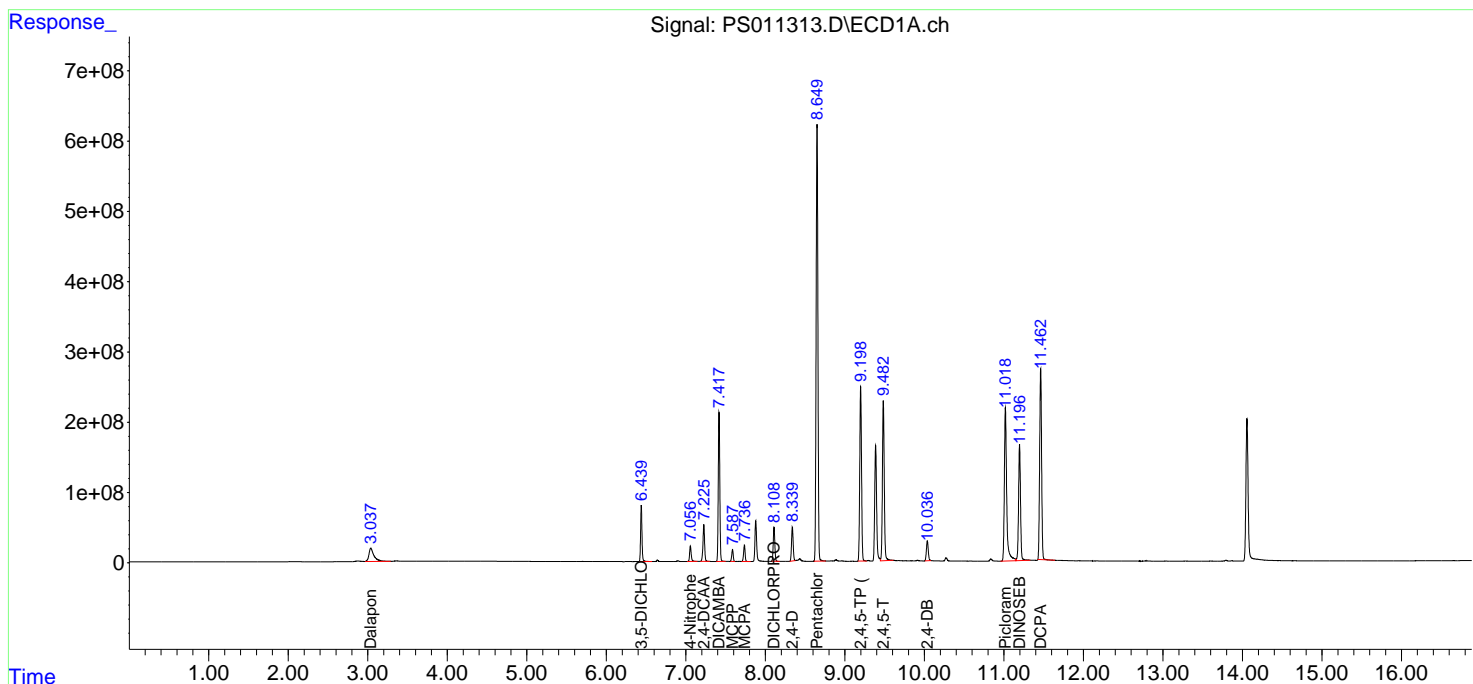
(f)=RT Delta > 1/2 Window (#)=Amounts differ by > 25% (m)=manual int.

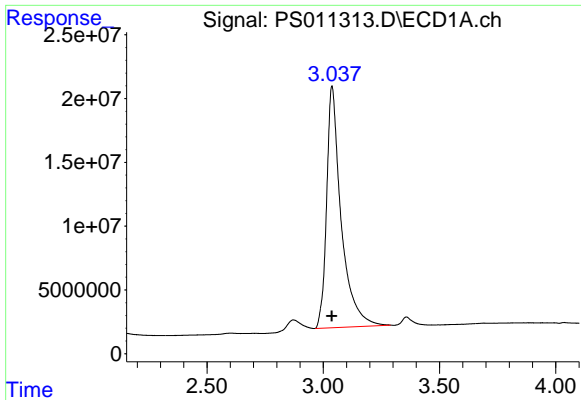
Data Path : Z:\pestpcbsrv\HPCHEM1\ECD\_S\Data\PS072220\  
 Data File : PS011313.D  
 Signal(s) : Signal #1: ECD1A.ch Signal #2: ECD2B.ch  
 Acq On : 22 Jul 2020 11:34  
 Operator : DD\AJ  
 Sample : HSTDCCC750  
 Misc :  
 ALS Vial : 3 Sample Multiplier: 1

Instrument :  
 ECD\_S  
 ClientSampled :

Integration File signal 1: autoint1.e  
 Integration File signal 2: autoint2.e  
 Quant Time: Jul 22 12:30:57 2020  
 Quant Method : Z:\pestpcbsrv\HPCHEM1\ECD\_S\Method\PS071320.M  
 Quant Title : 8080.M  
 QLast Update : Mon Jul 13 16:10:29 2020  
 Response via : Initial Calibration  
 Integrator: ChemStation

Volume Inj. : 2 µl  
 Signal #1 Phase : Rtx-CLPesticides Signal #2 Phase: Rtx-CLPesticides2  
 Signal #1 Info : 30M x 0.32mm x0.5 Signal #2 Info : 30M x 0.32mm x 0.25µm

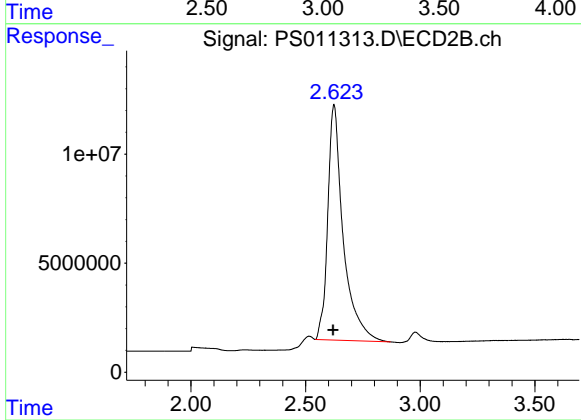




#1 Dalapon

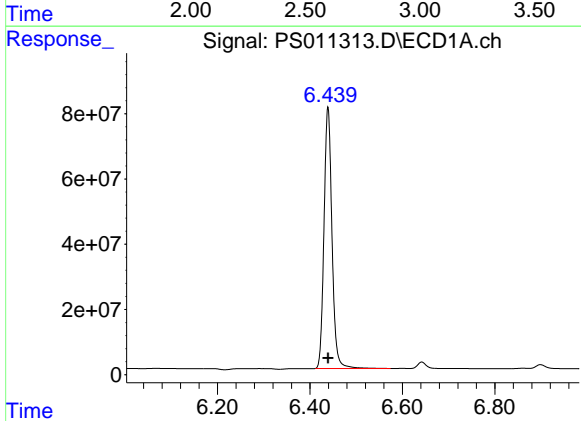
R.T.: 3.037 min  
 Delta R.T.: 0.001 min  
 Response: 823011357  
 Conc: 683.92 ng/ml

Instrument :  
 ECD\_S  
 ClientSampleId :



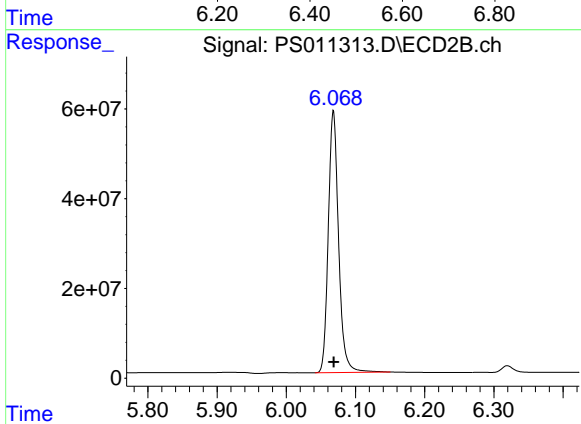
#1 Dalapon

R.T.: 2.624 min  
 Delta R.T.: 0.003 min  
 Response: 506508009  
 Conc: 659.80 ng/ml



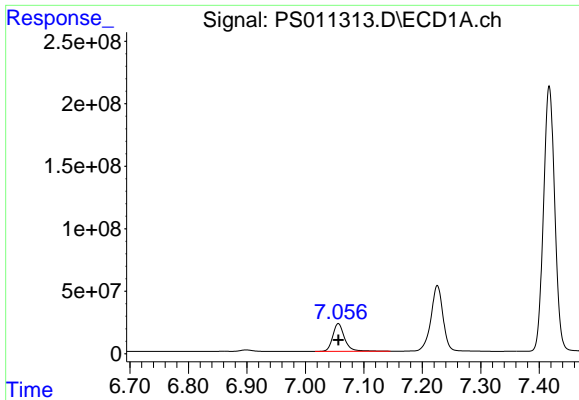
#2 3,5-DICHLOROBENZOIC ACID

R.T.: 6.439 min  
 Delta R.T.: 0.000 min  
 Response: 961951379  
 Conc: 718.86 ng/ml



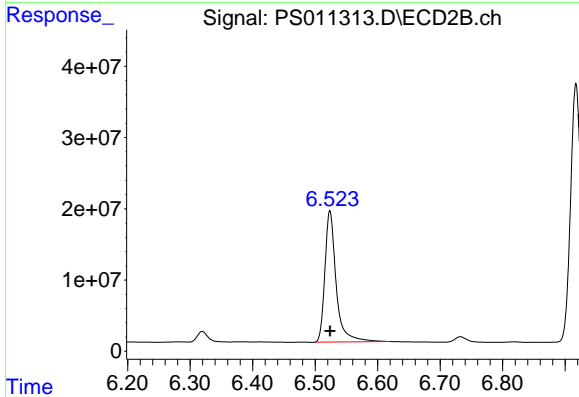
#2 3,5-DICHLOROBENZOIC ACID

R.T.: 6.068 min  
 Delta R.T.: 0.000 min  
 Response: 604090492  
 Conc: 719.29 ng/ml

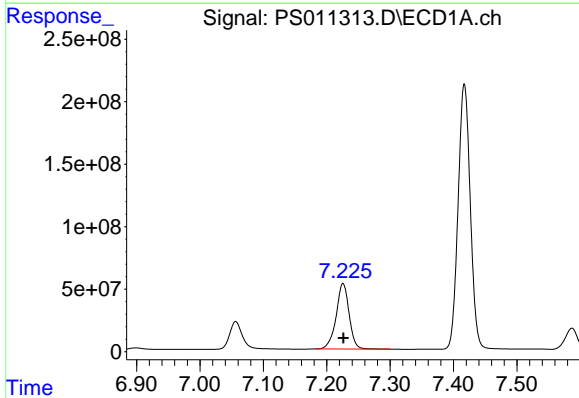


#3 4-Nitrophenol  
R.T.: 7.056 min  
Delta R.T.: 0.000 min  
Response: 312364947  
Conc: 708.56 ng/ml

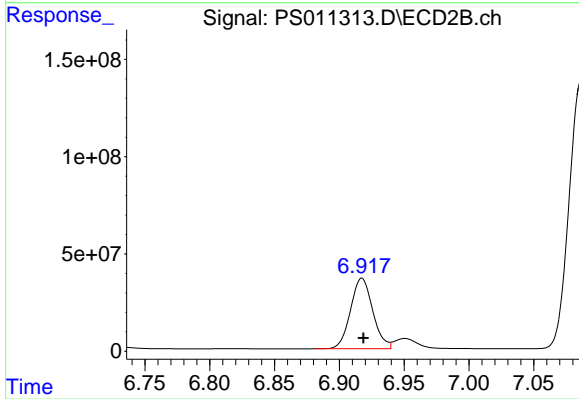
Instrument :  
ECD\_S  
ClientSampleId :



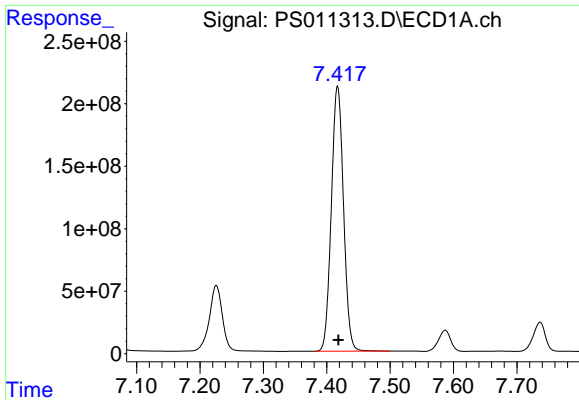
#3 4-Nitrophenol  
R.T.: 6.524 min  
Delta R.T.: 0.000 min  
Response: 231019741  
Conc: 704.59 ng/ml



#4 2,4-DCAA  
R.T.: 7.226 min  
Delta R.T.: 0.000 min  
Response: 745892450  
Conc: 768.69 ng/ml



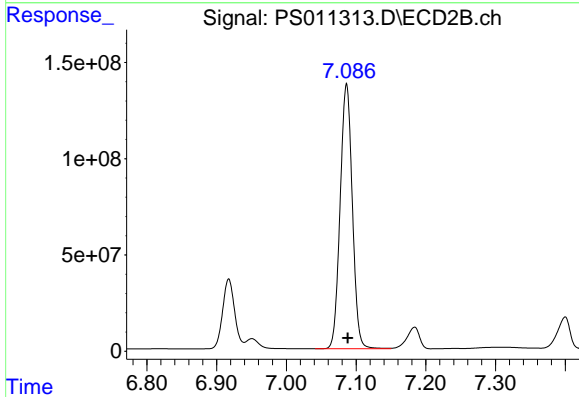
#4 2,4-DCAA  
R.T.: 6.917 min  
Delta R.T.: -0.001 min  
Response: 433068472  
Conc: 769.19 ng/ml



#5 DICAMBA

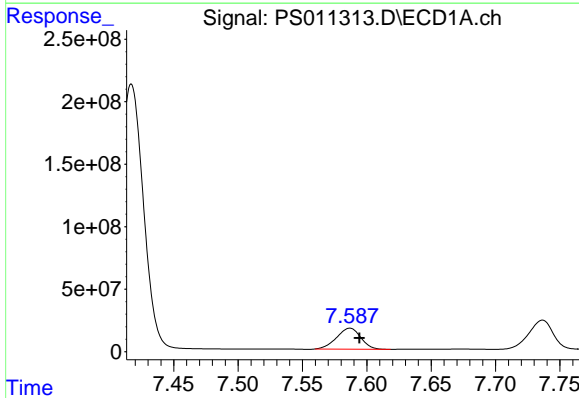
R.T.: 7.417 min  
 Delta R.T.: -0.001 min  
 Response: 2827703135  
 Conc: 729.57 ng/ml

Instrument :  
 ECD\_S  
 ClientSampleId :



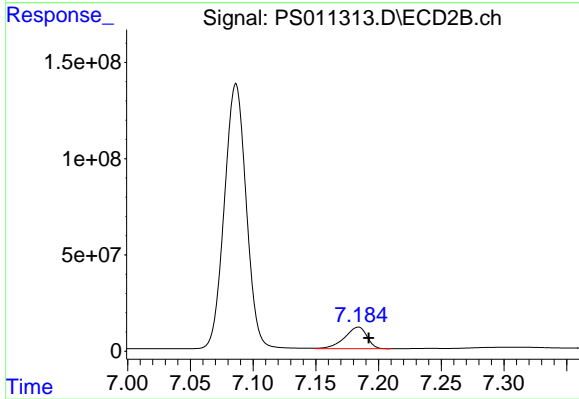
#5 DICAMBA

R.T.: 7.086 min  
 Delta R.T.: -0.002 min  
 Response: 1670734659  
 Conc: 729.59 ng/ml



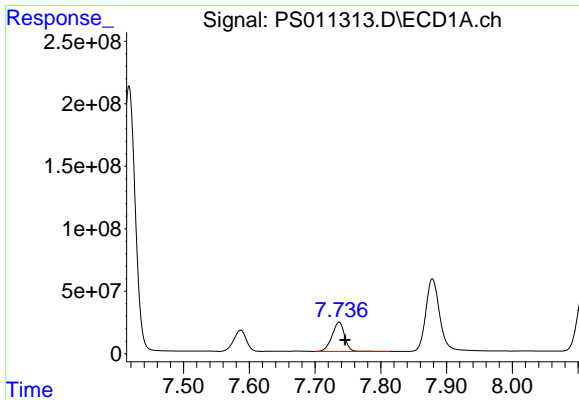
#6 MCP

R.T.: 7.587 min  
 Delta R.T.: -0.007 min  
 Response: 219428485  
 Conc: 72.46 ug/ml



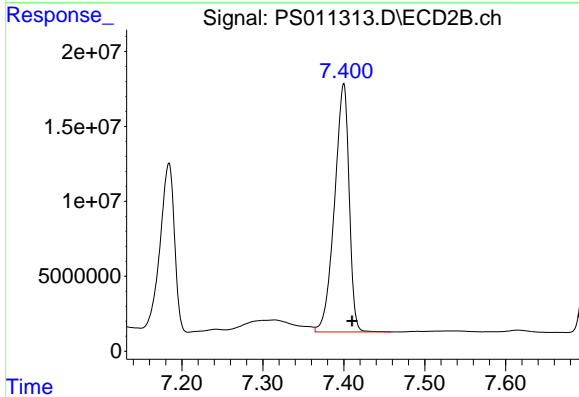
#6 MCP

R.T.: 7.184 min  
 Delta R.T.: -0.009 min  
 Response: 140361881  
 Conc: 73.56 ug/ml

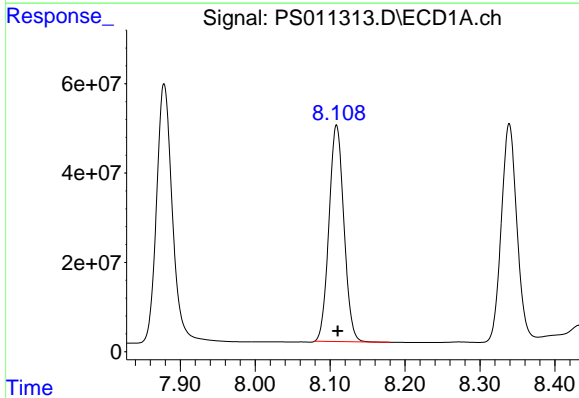


#7 MCPA  
 R.T.: 7.737 min  
 Delta R.T.: -0.009 min  
 Response: 308598900  
 Conc: 72.36 ug/ml

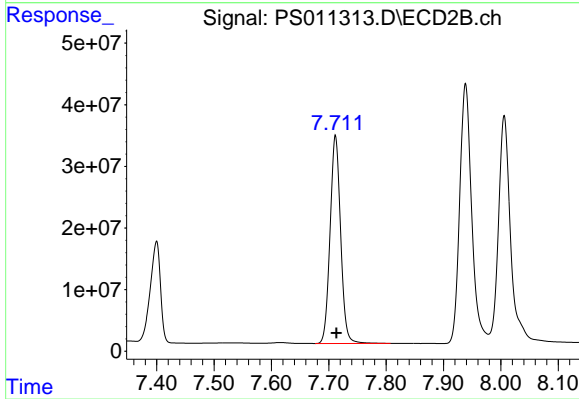
Instrument :  
 ECD\_S  
 ClientSampled :



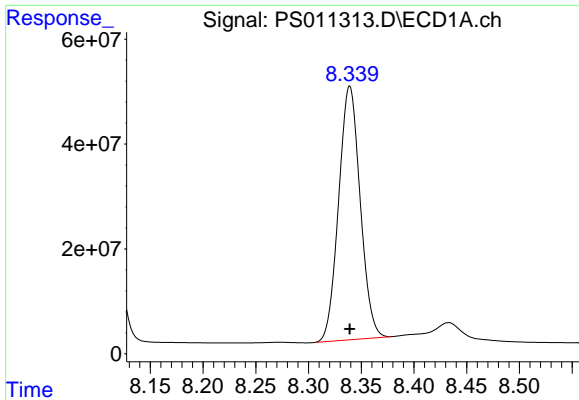
#7 MCPA  
 R.T.: 7.399 min  
 Delta R.T.: -0.011 min  
 Response: 207866319  
 Conc: 72.12 ug/ml



#8 DICHLORPROP  
 R.T.: 8.109 min  
 Delta R.T.: -0.001 min  
 Response: 669490529  
 Conc: 714.10 ng/ml

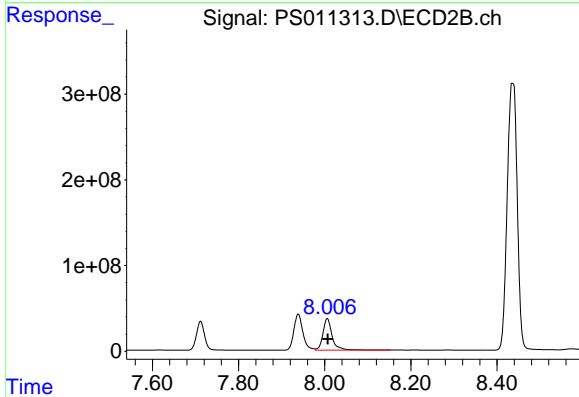


#8 DICHLORPROP  
 R.T.: 7.712 min  
 Delta R.T.: -0.002 min  
 Response: 434048166  
 Conc: 721.09 ng/ml

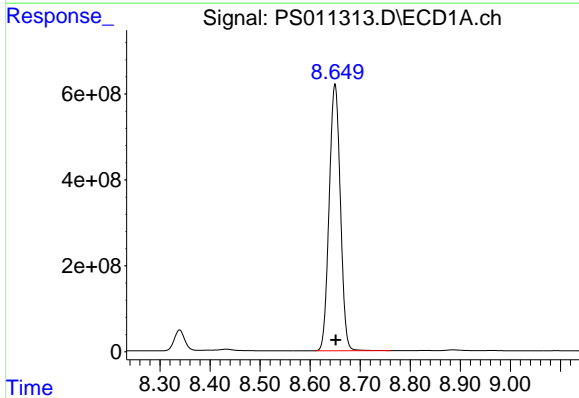


#9 2,4-D  
 R.T.: 8.339 min  
 Delta R.T.: 0.000 min  
 Response: 686357345  
 Conc: 721.66 ng/ml

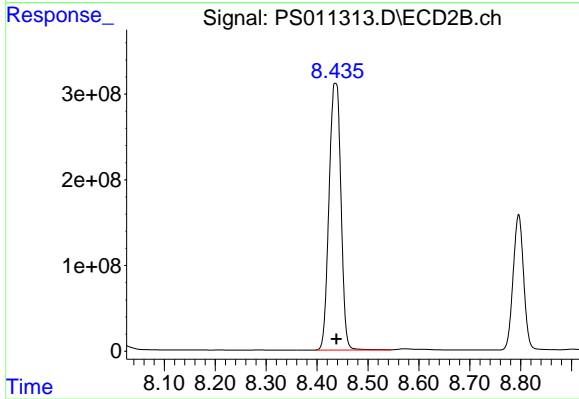
Instrument :  
 ECD\_S  
 ClientSampled :



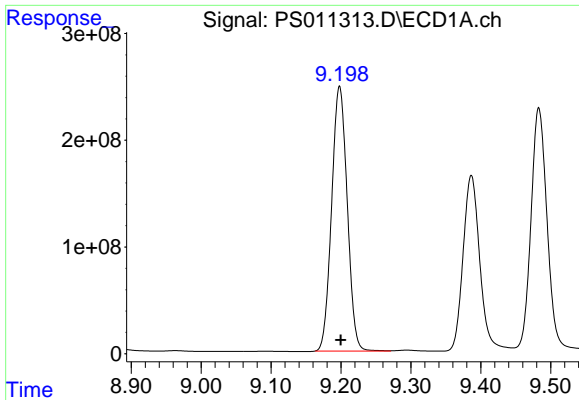
#9 2,4-D  
 R.T.: 8.006 min  
 Delta R.T.: 0.000 min  
 Response: 544322481  
 Conc: 726.09 ng/ml



#10 Pentachlorophenol  
 R.T.: 8.650 min  
 Delta R.T.: -0.002 min  
 Response: 9626737340  
 Conc: 728.27 ng/ml

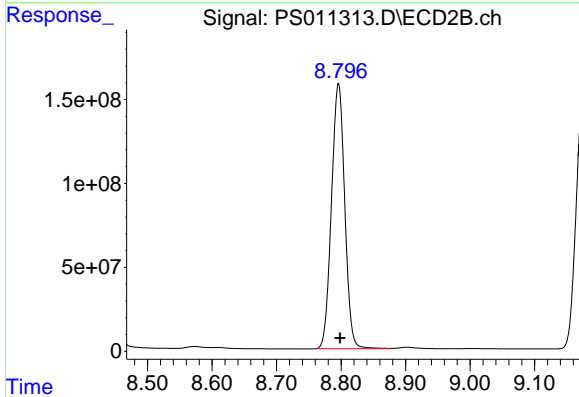


#10 Pentachlorophenol  
 R.T.: 8.436 min  
 Delta R.T.: -0.002 min  
 Response: 5053544935  
 Conc: 725.08 ng/ml

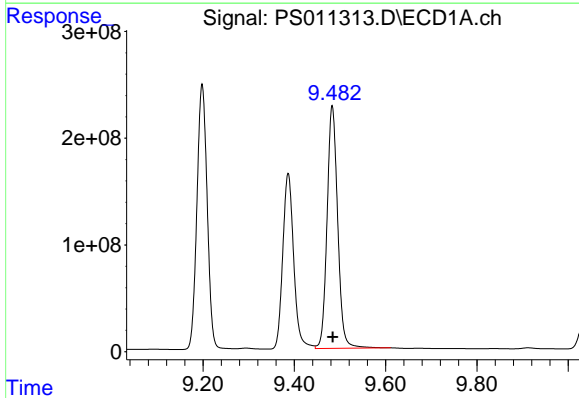


#11 2,4,5-TP (SILVEX)  
 R.T.: 9.198 min  
 Delta R.T.: -0.002 min  
 Response: 3847128532  
 Conc: 726.46 ng/ml

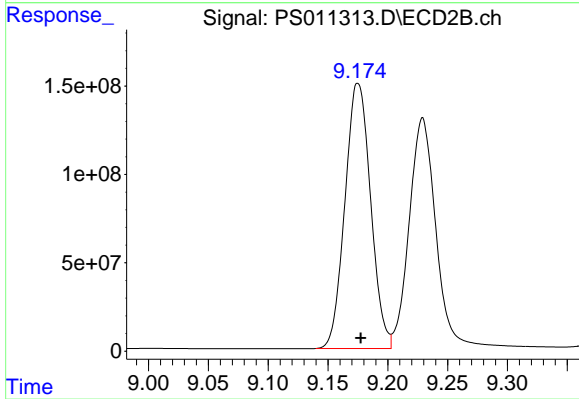
Instrument :  
 ECD\_S  
 ClientSampled :



#11 2,4,5-TP (SILVEX)  
 R.T.: 8.796 min  
 Delta R.T.: -0.002 min  
 Response: 2263024238  
 Conc: 740.21 ng/ml

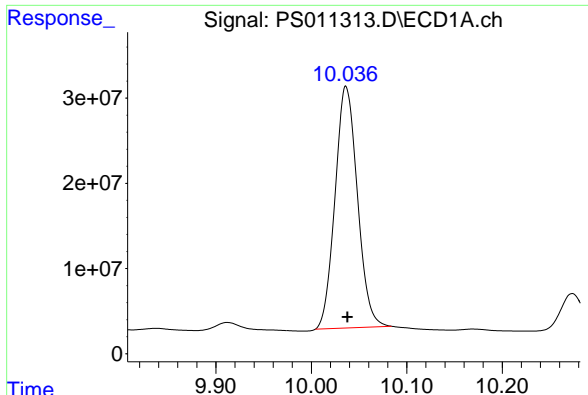


#12 2,4,5-T  
 R.T.: 9.483 min  
 Delta R.T.: -0.002 min  
 Response: 3666705892  
 Conc: 726.67 ng/ml



#12 2,4,5-T  
 R.T.: 9.175 min  
 Delta R.T.: -0.002 min  
 Response: 2241887524  
 Conc: 739.16 ng/ml

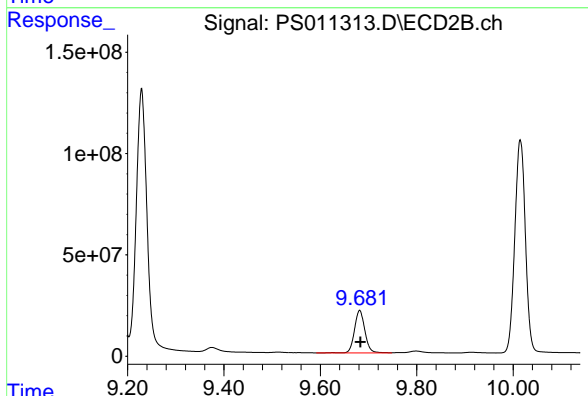




#13 2,4-DB

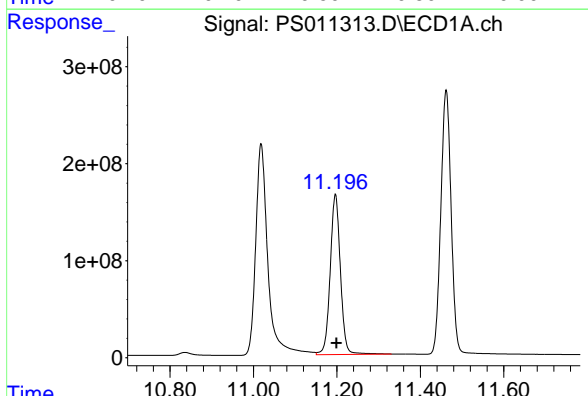
R.T.: 10.036 min  
 Delta R.T.: -0.001 min  
 Response: 462732599  
 Conc: 717.94 ng/ml

Instrument :  
 ECD\_S  
 ClientSampled :



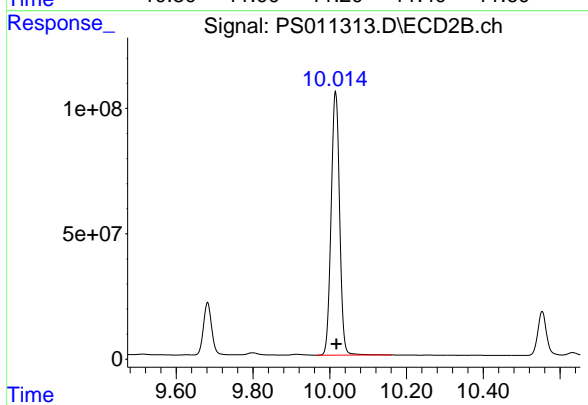
#13 2,4-DB

R.T.: 9.682 min  
 Delta R.T.: -0.001 min  
 Response: 312568024  
 Conc: 731.16 ng/ml



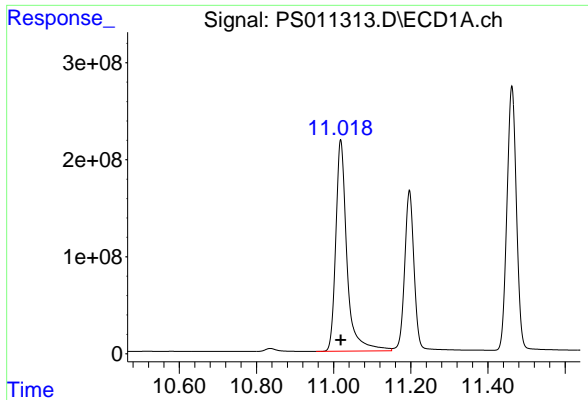
#14 DINOSEB

R.T.: 11.197 min  
 Delta R.T.: -0.002 min  
 Response: 2805396206  
 Conc: 727.79 ng/ml



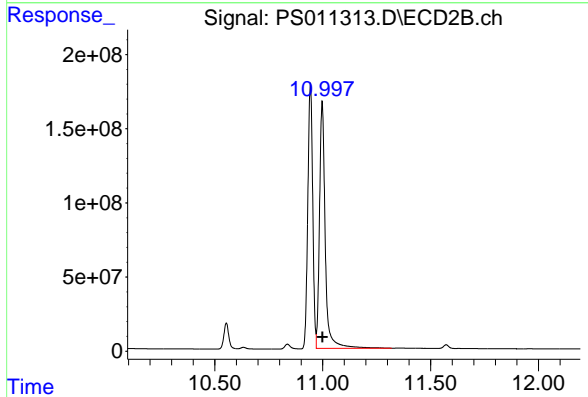
#14 DINOSEB

R.T.: 10.015 min  
 Delta R.T.: -0.002 min  
 Response: 1610509512  
 Conc: 750.85 ng/ml

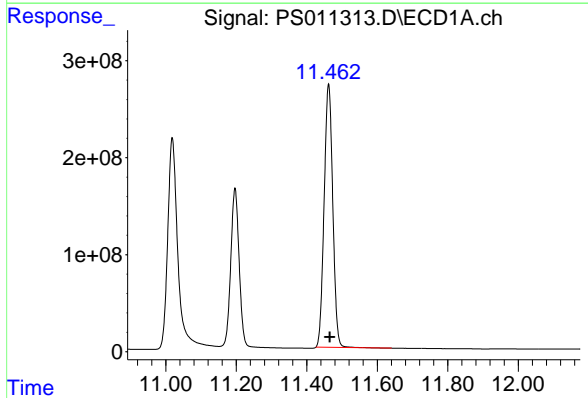


#15 Picloram  
 R.T.: 11.018 min  
 Delta R.T.: 0.000 min  
 Response: 4399634379  
 Conc: 697.26 ng/ml

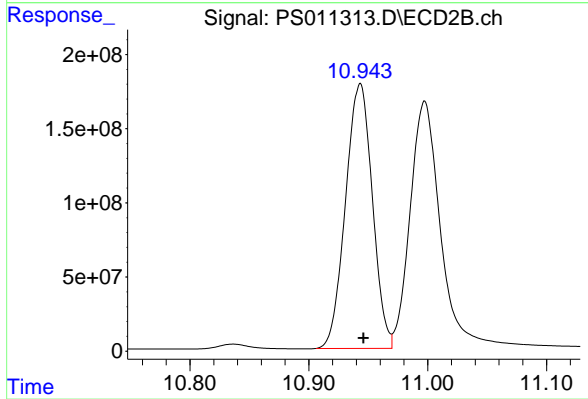
Instrument :  
 ECD\_S  
 ClientSampleId :



#15 Picloram  
 R.T.: 10.997 min  
 Delta R.T.: -0.002 min  
 Response: 3093566327  
 Conc: 707.37 ng/ml



#16 DCPA  
 R.T.: 11.462 min  
 Delta R.T.: -0.004 min  
 Response: 4600996808  
 Conc: 714.12 ng/ml



#16 DCPA  
 R.T.: 10.943 min  
 Delta R.T.: -0.003 min  
 Response: 2804251965  
 Conc: 741.49 ng/ml