

Data Path : Z:\pestpcbsrv\HPCHEM1\ECD\_S\Data\PS072220\  
 Data File : PS011316.D  
 Signal(s) : Signal #1: ECD1A.ch Signal #2: ECD2B.ch  
 Acq On : 22 Jul 2020 14:47  
 Operator : DD\AJ  
 Sample : L3351-01  
 Misc :  
 ALS Vial : 6 Sample Multiplier: 1

Instrument :  
 ECD\_S  
 ClientSampleId :  
 SAMPLE-1A

Integration File signal 1: autoint1.e  
 Integration File signal 2: autoint2.e  
 Quant Time: Jul 22 17:24:44 2020  
 Quant Method : Z:\pestpcbsrv\HPCHEM1\ECD\_S\Method\PS071320.M  
 Quant Title : 8080.M  
 QLast Update : Mon Jul 13 16:10:29 2020  
 Response via : Initial Calibration  
 Integrator: ChemStation

Volume Inj. : 2 µl  
 Signal #1 Phase : Rtx-CLPesticides Signal #2 Phase: Rtx-CLPesticides2  
 Signal #1 Info : 30M x 0.32mm x0.5 Signal #2 Info : 30M x 0.32mm x 0.25µm

Compound	RT#1	RT#2	Resp#1	Resp#2	ng/ml	ng/ml
-----						
System Monitoring Compounds						
4) S 2,4-DCAA	7.226	6.919	339.5E6	207.5E6	349.895	368.458
Target Compounds						
1) T Dalapon	2.996	0.000	14737125	0	12.247	N.D. #
2) T 3,5-DICHL...	0.000	6.099	0	56497801	N.D.	67.272
3) T 4-Nitroph...	7.064	0.000	7349359	0	16.671	N.D. #
5) T DICAMBA	7.427	0.000	12053029	0	3.110	N.D. #
7) T MCPA	7.774	7.381	21492805	27140864	5.040	9.416 #
8) T DICHLORPROP	0.000	7.666	0	2292409	N.D.	3.808
10) T Pentachlo...	8.648	8.435	9392180	9518299	<MDL	1.366 #
12) T 2,4,5-T	9.503	0.000	12577776	0	2.493	N.D. #
14) T DINOSEB	11.194	10.033	21706565	28149081	5.631	13.124 #
15) T Picloram	11.023	11.003	50598708	38092507	8.019	8.710
16) T DCPA	11.529	10.941	23963917	9545638	3.719	2.524 #

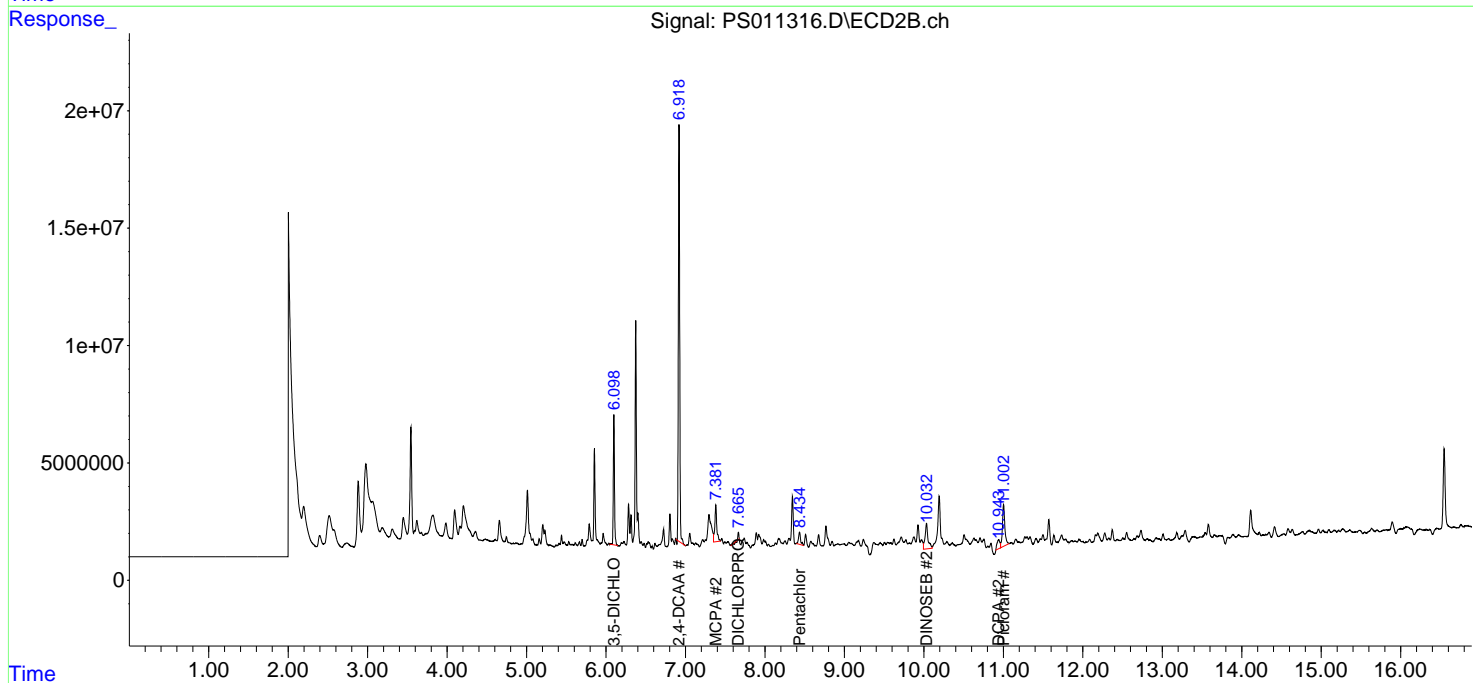
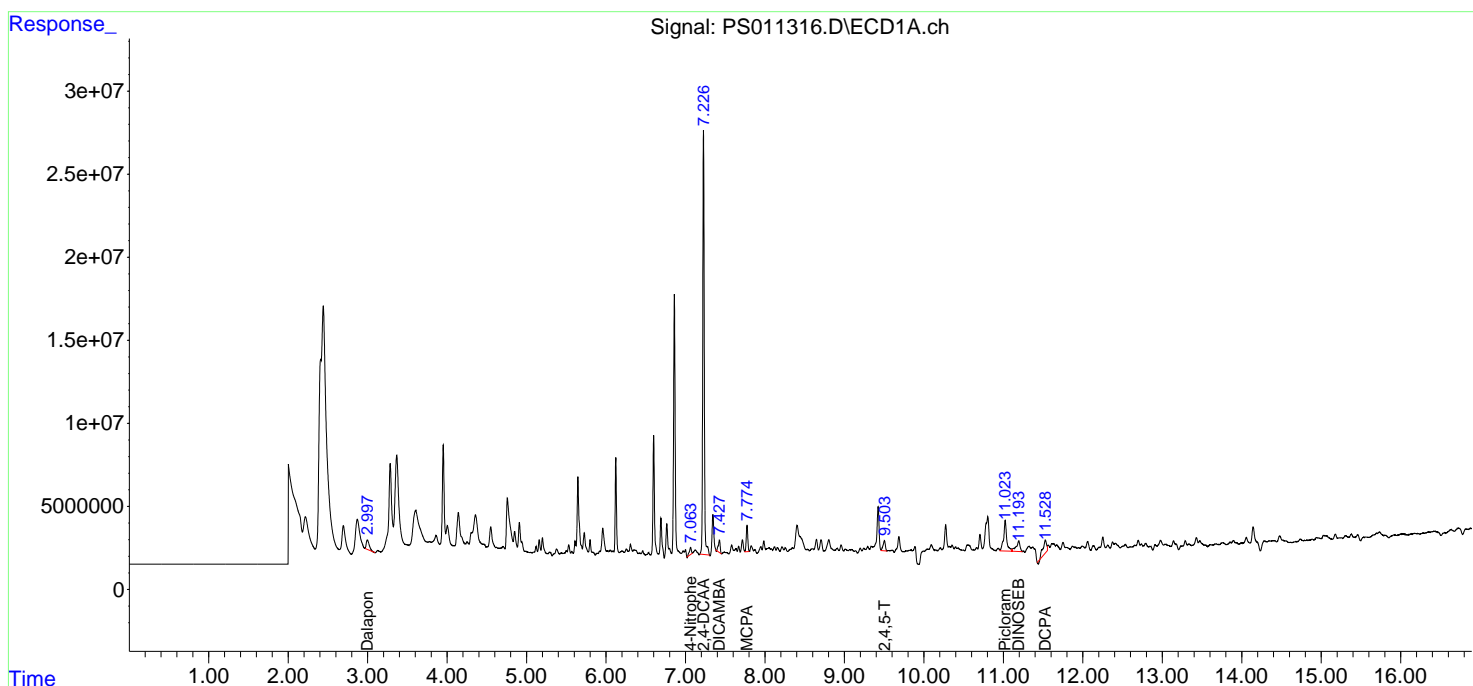
(f)=RT Delta > 1/2 Window (#)=Amounts differ by > 25% (m)=manual int.

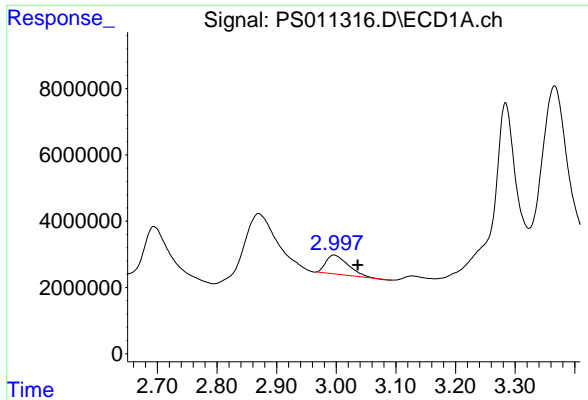
Data Path : Z:\pestpcbsrv\HPCHEM1\ECD\_S\Data\PS072220\  
 Data File : PS011316.D  
 Signal(s) : Signal #1: ECD1A.ch Signal #2: ECD2B.ch  
 Acq On : 22 Jul 2020 14:47  
 Operator : DD\AJ  
 Sample : L3351-01  
 Misc :  
 ALS Vial : 6 Sample Multiplier: 1

Instrument :  
 ECD\_S  
 ClientSampled :  
 SAMPLE-1A

Integration File signal 1: autoint1.e  
 Integration File signal 2: autoint2.e  
 Quant Time: Jul 22 17:24:44 2020  
 Quant Method : Z:\pestpcbsrv\HPCHEM1\ECD\_S\Method\PS071320.M  
 Quant Title : 8080.M  
 QLast Update : Mon Jul 13 16:10:29 2020  
 Response via : Initial Calibration  
 Integrator: ChemStation

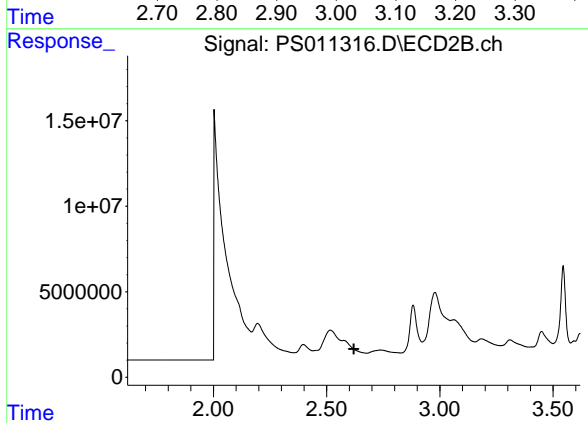
Volume Inj. : 2 µl  
 Signal #1 Phase : Rtx-CLPesticides Signal #2 Phase: Rtx-CLPesticides2  
 Signal #1 Info : 30M x 0.32mm x0.5 Signal #2 Info : 30M x 0.32mm x 0.25µm



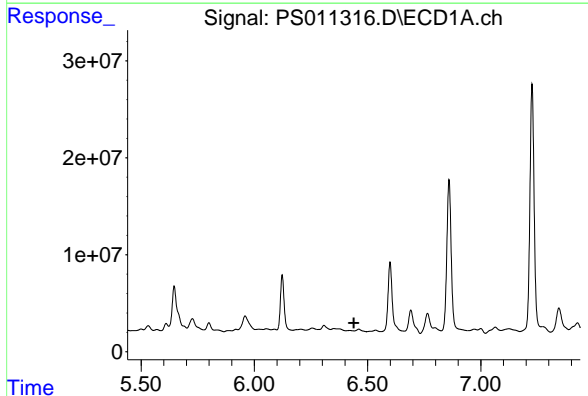


#1 Dalapon  
 R.T.: 2.996 min  
 Delta R.T.: -0.040 min  
 Response: 14737125  
 Conc: 12.25 ng/ml

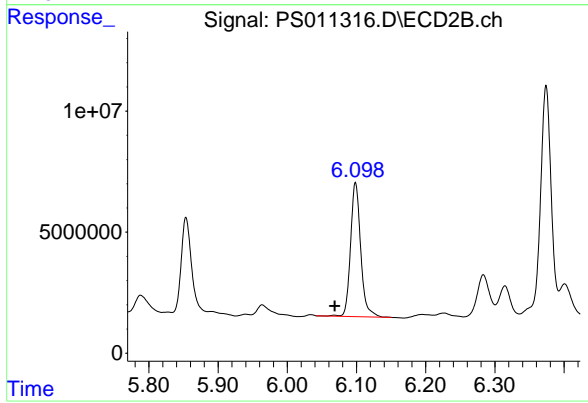
Instrument :  
 ECD\_S  
 ClientSampleId :  
 SAMPLE-1A



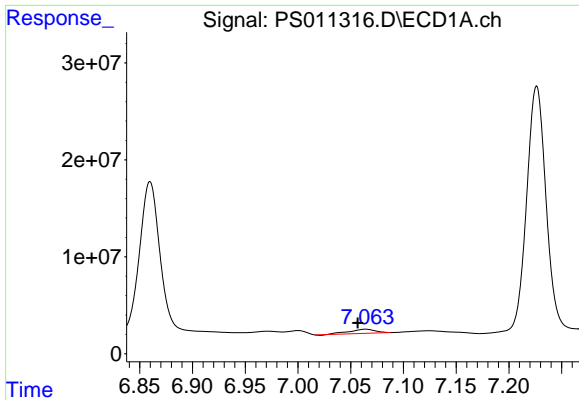
#1 Dalapon  
 R.T.: 0.000 min  
 Exp R.T. : 2.620 min  
 Response: 0  
 Conc: N.D.



#2 3,5-DICHLOROBENZOIC ACID  
 R.T.: 0.000 min  
 Exp R.T. : 6.439 min  
 Response: 0  
 Conc: N.D.

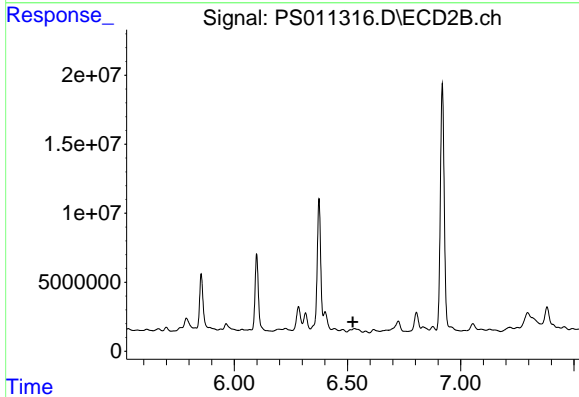


#2 3,5-DICHLOROBENZOIC ACID  
 R.T.: 6.099 min  
 Delta R.T.: 0.030 min  
 Response: 56497801  
 Conc: 67.27 ng/ml

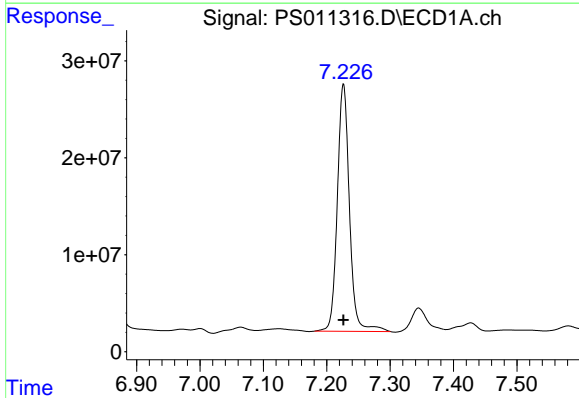


#3 4-Nitrophenol  
 R.T.: 7.064 min  
 Delta R.T.: 0.007 min  
 Response: 7349359  
 Conc: 16.67 ng/ml

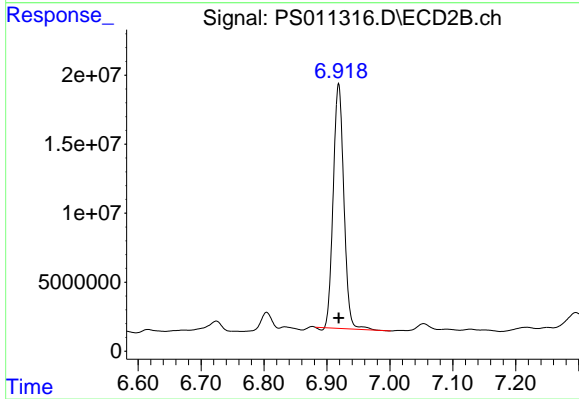
Instrument :  
 ECD\_S  
 ClientSampleId :  
 SAMPLE-1A



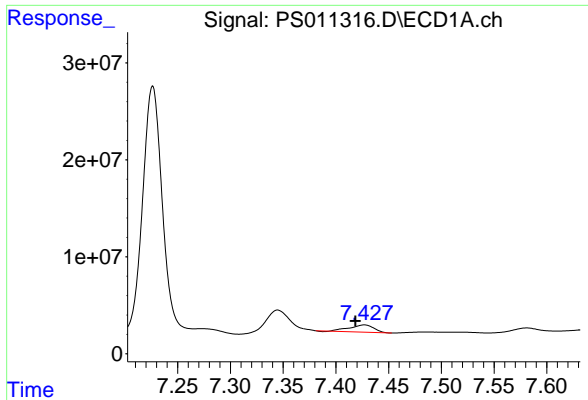
#3 4-Nitrophenol  
 R.T.: 0.000 min  
 Exp R.T. : 6.524 min  
 Response: 0  
 Conc: N.D.



#4 2,4-DCAA  
 R.T.: 7.226 min  
 Delta R.T.: 0.000 min  
 Response: 339516008  
 Conc: 349.89 ng/ml

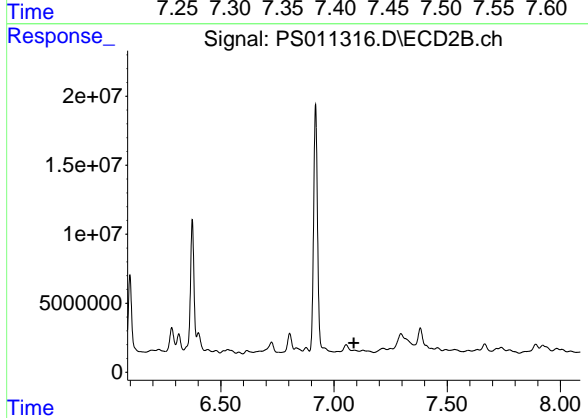


#4 2,4-DCAA  
 R.T.: 6.919 min  
 Delta R.T.: 0.000 min  
 Response: 207450374  
 Conc: 368.46 ng/ml

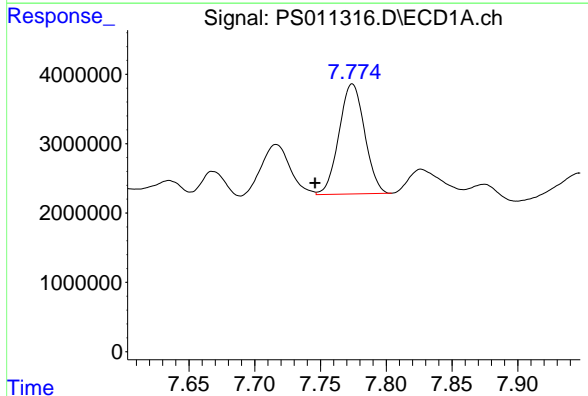


#5 DICAMBA  
 R.T.: 7.427 min  
 Delta R.T.: 0.008 min  
 Response: 12053029  
 Conc: 3.11 ng/ml

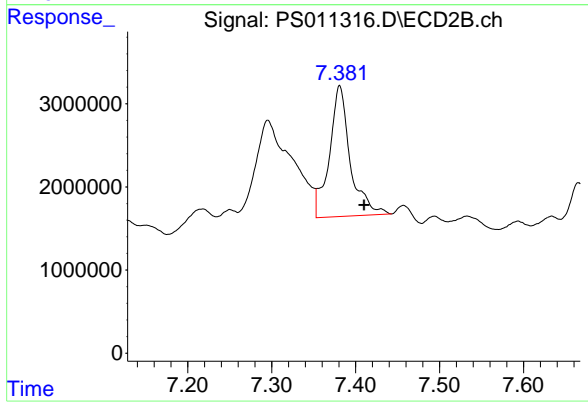
Instrument :  
 ECD\_S  
 ClientSampleId :  
 SAMPLE-1A



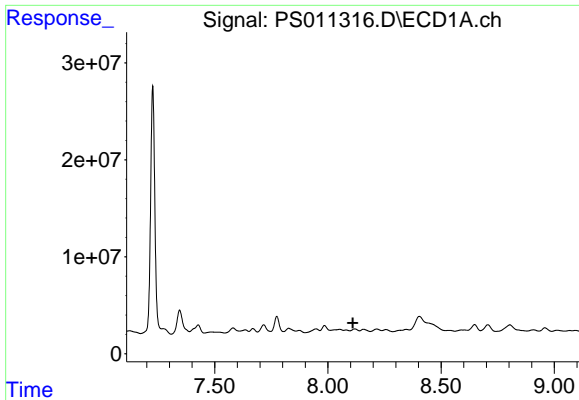
#5 DICAMBA  
 R.T.: 0.000 min  
 Exp R.T. : 7.088 min  
 Response: 0  
 Conc: N.D.



#7 MCPA  
 R.T.: 7.774 min  
 Delta R.T.: 0.028 min  
 Response: 21492805  
 Conc: 5.04 ug/ml



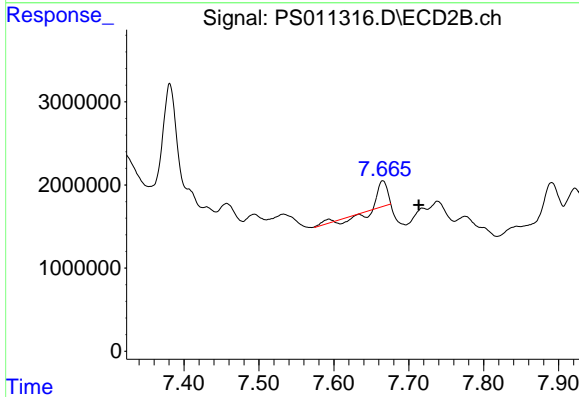
#7 MCPA  
 R.T.: 7.381 min  
 Delta R.T.: -0.029 min  
 Response: 27140864  
 Conc: 9.42 ug/ml



#8 DICHLORPROP

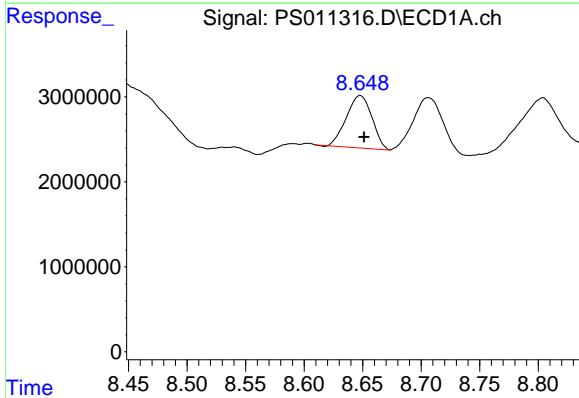
R.T.: 0.000 min  
 Exp R.T.: 8.110 min  
 Response: 0  
 Conc: N.D.

Instrument :  
 ECD\_S  
 ClientSampleId :  
 SAMPLE-1A



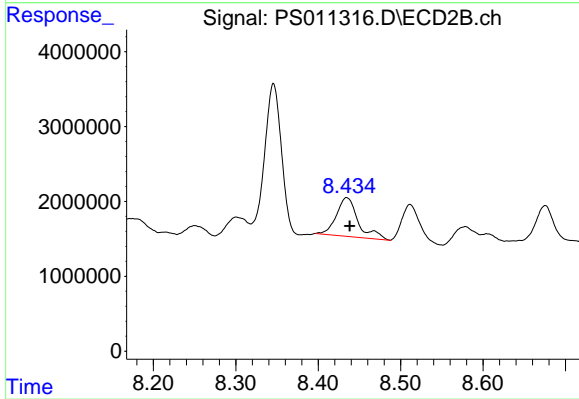
#8 DICHLORPROP

R.T.: 7.666 min  
 Delta R.T.: -0.048 min  
 Response: 2292409  
 Conc: 3.81 ng/ml



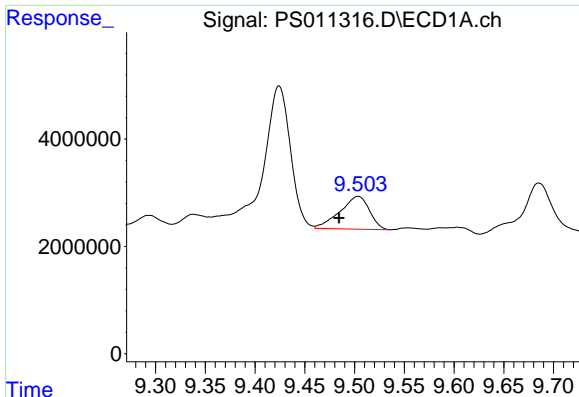
#10 Pentachlorophenol

R.T.: 8.648 min  
 Delta R.T.: -0.003 min  
 Response: 9392180  
 Conc: N.D.



#10 Pentachlorophenol

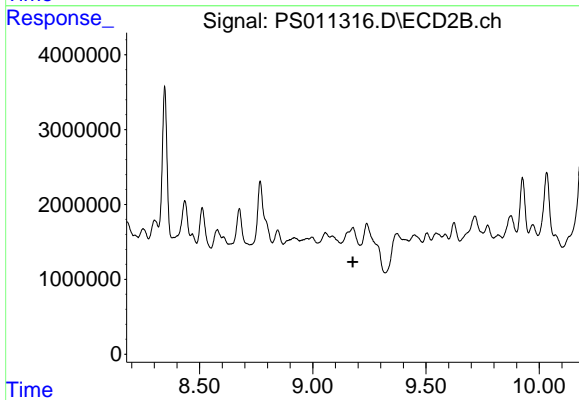
R.T.: 8.435 min  
 Delta R.T.: -0.004 min  
 Response: 9518299  
 Conc: 1.37 ng/ml



#12 2,4,5-T

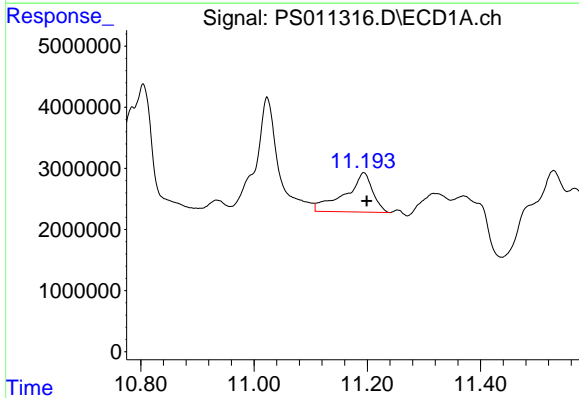
R.T.: 9.503 min  
 Delta R.T.: 0.019 min  
 Response: 1257776  
 Conc: 2.49 ng/ml

Instrument :  
 ECD\_S  
 ClientSampled :  
 SAMPLE-1A



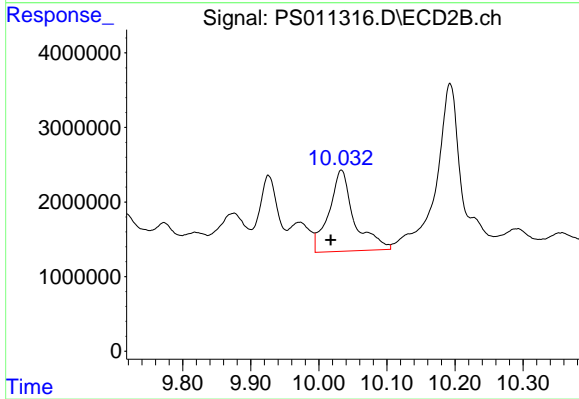
#12 2,4,5-T

R.T.: 0.000 min  
 Exp R.T. : 9.177 min  
 Response: 0  
 Conc: N.D.



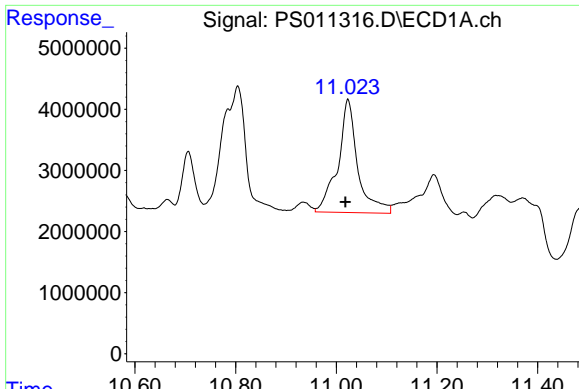
#14 DINOSEB

R.T.: 11.194 min  
 Delta R.T.: -0.005 min  
 Response: 21706565  
 Conc: 5.63 ng/ml



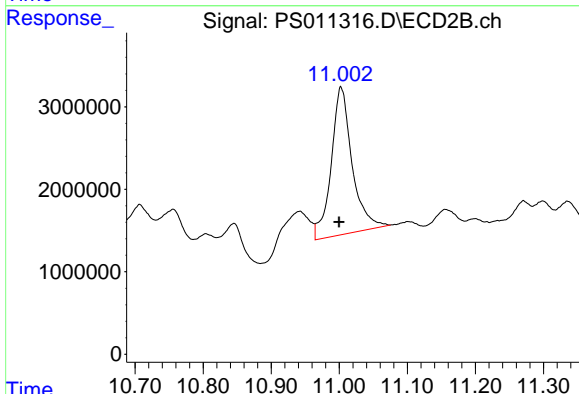
#14 DINOSEB

R.T.: 10.033 min  
 Delta R.T.: 0.016 min  
 Response: 28149081  
 Conc: 13.12 ng/ml

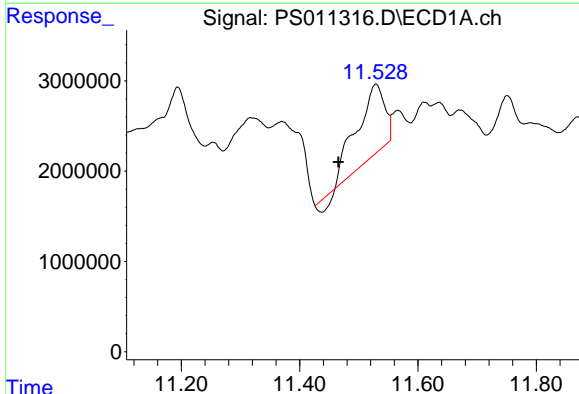


#15 Picloram  
 R.T.: 11.023 min  
 Delta R.T.: 0.005 min  
 Response: 50598708  
 Conc: 8.02 ng/ml

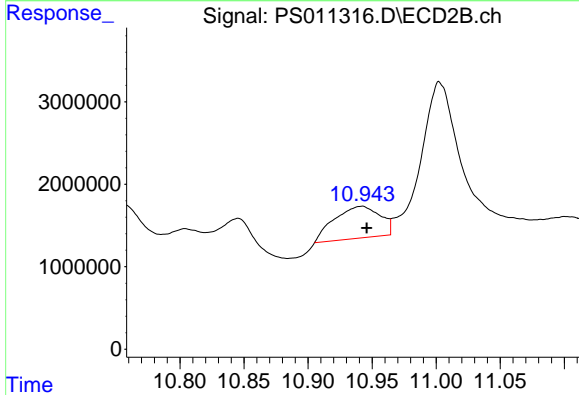
Instrument :  
 ECD\_S  
 ClientSampled :  
 SAMPLE-1A



#15 Picloram  
 R.T.: 11.003 min  
 Delta R.T.: 0.003 min  
 Response: 38092507  
 Conc: 8.71 ng/ml



#16 DCPA  
 R.T.: 11.529 min  
 Delta R.T.: 0.063 min  
 Response: 23963917  
 Conc: 3.72 ng/ml



#16 DCPA  
 R.T.: 10.941 min  
 Delta R.T.: -0.004 min  
 Response: 9545638  
 Conc: 2.52 ng/ml