

Data Path : Z:\pestpcbsrv\HPCHEM1\ECD\_S\Data\PS072220\  
 Data File : PS011329.D  
 Signal(s) : Signal #1: ECD1A.ch Signal #2: ECD2B.ch  
 Acq On : 22 Jul 2020 19:47  
 Operator : DD\AJ  
 Sample : PB130394BS  
 Misc :  
 ALS Vial : 17 Sample Multiplier: 1

Instrument :  
 ECD\_S  
 ClientSampleId :  
 PB130394BS

Integration File signal 1: autoint1.e  
 Integration File signal 2: autoint2.e  
 Quant Time: Jul 23 02:47:46 2020  
 Quant Method : Z:\pestpcbsrv\HPCHEM1\ECD\_S\Method\PS071320.M  
 Quant Title : 8080.M  
 QLast Update : Mon Jul 13 16:10:29 2020  
 Response via : Initial Calibration  
 Integrator: ChemStation

Volume Inj. : 2 µl  
 Signal #1 Phase : Rtx-CLPesticides Signal #2 Phase: Rtx-CLPesticides2  
 Signal #1 Info : 30M x 0.32mm x0.5 Signal #2 Info : 30M x 0.32mm x 0.25µm

	Compound	RT#1	RT#2	Resp#1	Resp#2	ng/ml	ng/ml
-----							
System Monitoring Compounds							
4) S	2,4-DCAA	7.224	6.917	547.3E6	338.6E6	563.995	601.452
Target Compounds							
1) T	Dalapon	3.037	2.625	534.6E6	439.1E6	444.242	571.925 #
2) T	3,5-DICHL...	6.438	6.068	737.5E6	444.9E6	551.143	529.748
3) T	4-Nitroph...	7.055	6.524	222.3E6	143.3E6	504.368	437.019
5) T	DICAMBA	7.416	7.086	2004.0E6	1205.8E6	517.041	526.572
6) T	MCP P	7.584	7.181	170.2E6	100.9E6	56.194	52.866
7) T	MCPA	7.733	7.396	218.4E6	169.0E6	51.213	58.627
8) T	DICHLORPROP	8.108	7.711	502.0E6	333.6E6	535.404	554.155
9) T	2,4-D	8.337	8.005	574.6E6	454.8E6	604.100	606.651
10) T	Pentachlo...	8.649	8.435	7533.3E6	4159.9E6	569.899	596.863
11) T	2,4,5-TP ...	9.197	8.796	3012.8E6	1766.4E6	568.906	577.777
12) T	2,4,5-T	9.482	9.175	2761.7E6	1739.0E6	547.314	573.352
13) T	2,4-DB	10.036	9.682	311.8E6	236.3E6	483.768	552.641
14) T	DINOSEB	11.196	10.015	2094.1E6	1242.8E6	543.262	579.399
15) T	Picloram	11.016	10.998	2656.3E6	1832.3E6	420.981	418.962
16) T	DCPA	11.461	10.943	3250.4E6	2221.3E6	504.498	587.336

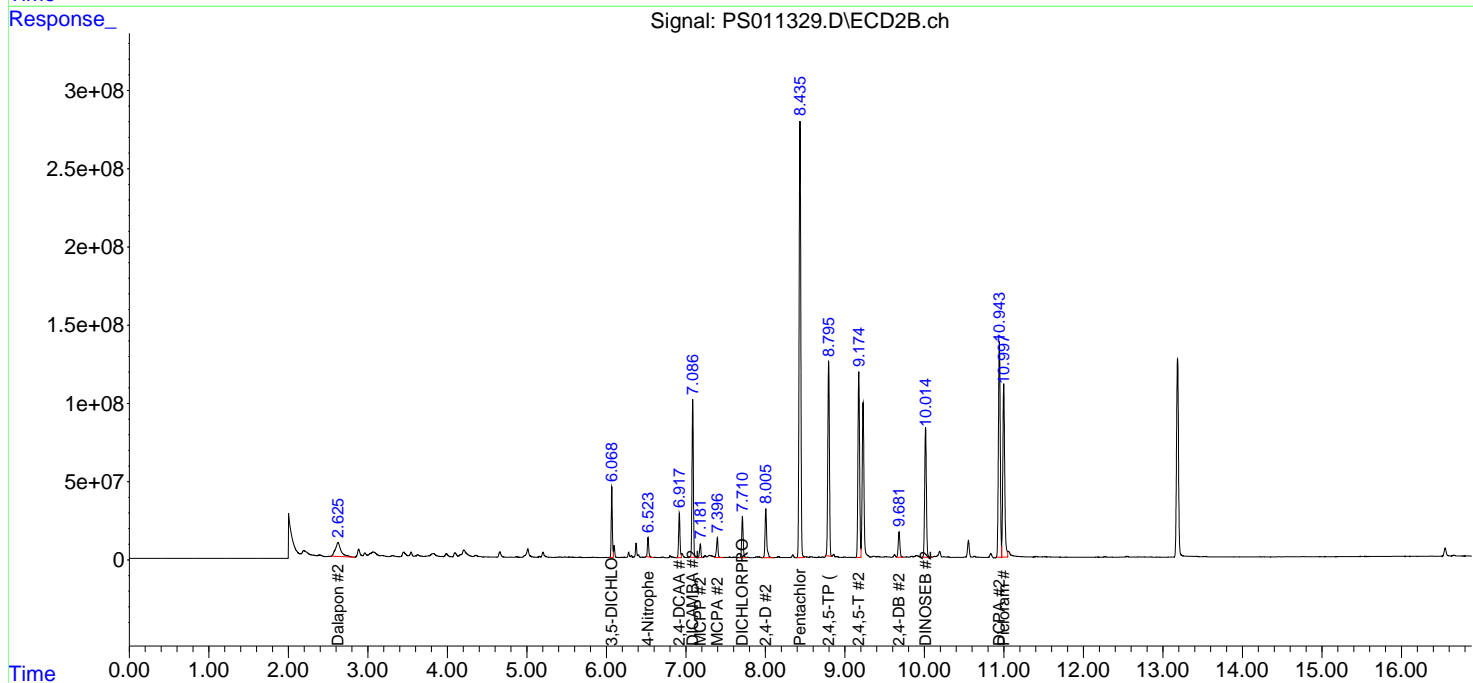
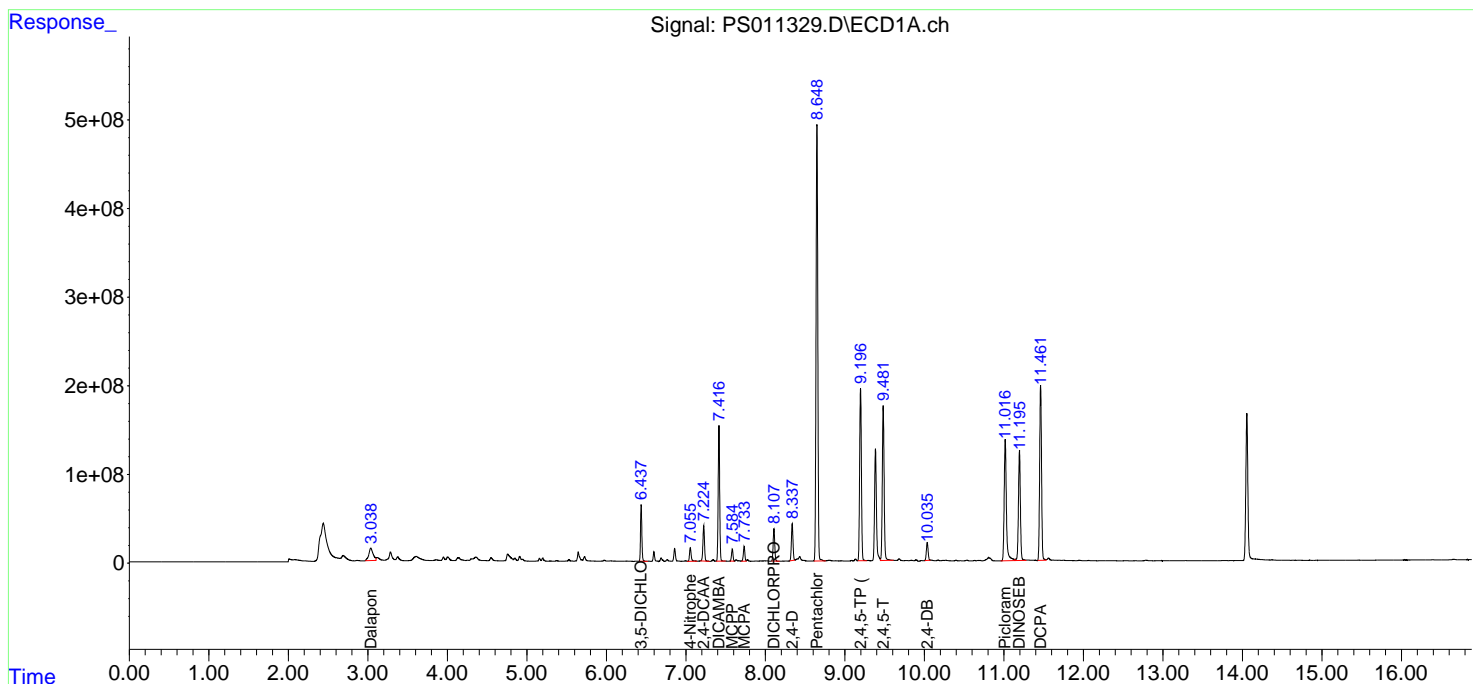
(f)=RT Delta > 1/2 Window (#)=Amounts differ by > 25% (m)=manual int.

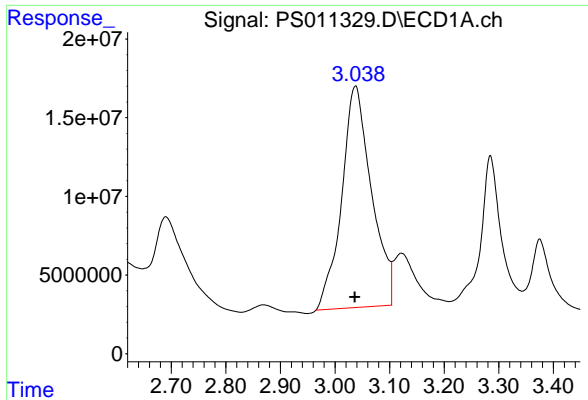
Data Path : Z:\pestpcbsrv\HPCHEM1\ECD\_S\Data\PS072220\  
 Data File : PS011329.D  
 Signal(s) : Signal #1: ECD1A.ch Signal #2: ECD2B.ch  
 Acq On : 22 Jul 2020 19:47  
 Operator : DD\AJ  
 Sample : PB130394BS  
 Misc :  
 ALS Vial : 17 Sample Multiplier: 1

Instrument :  
 ECD\_S  
 ClientSampled :  
 PB130394BS

Integration File signal 1: autoint1.e  
 Integration File signal 2: autoint2.e  
 Quant Time: Jul 23 02:47:46 2020  
 Quant Method : Z:\pestpcbsrv\HPCHEM1\ECD\_S\Method\PS071320.M  
 Quant Title : 8080.M  
 QLast Update : Mon Jul 13 16:10:29 2020  
 Response via : Initial Calibration  
 Integrator: ChemStation

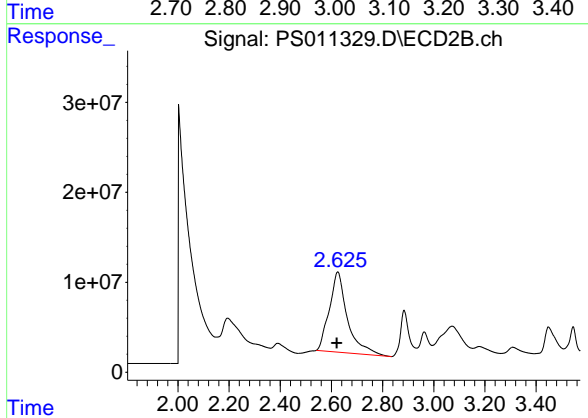
Volume Inj. : 2 µl  
 Signal #1 Phase : Rtx-CLPesticides Signal #2 Phase: Rtx-CLPesticides2  
 Signal #1 Info : 30M x 0.32mm x0.5 Signal #2 Info : 30M x 0.32mm x 0.25µm



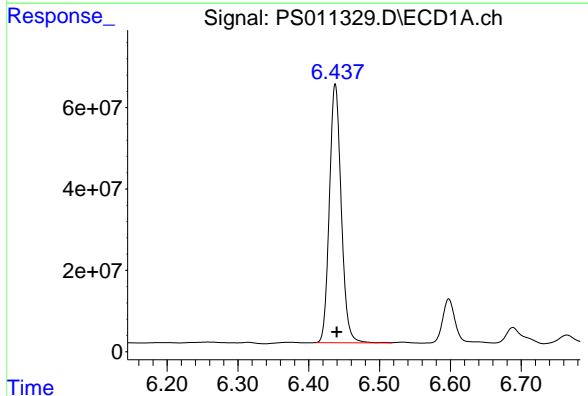


#1 Dalapon  
 R.T.: 3.037 min  
 Delta R.T.: 0.001 min  
 Response: 534587321  
 Conc: 444.24 ng/ml

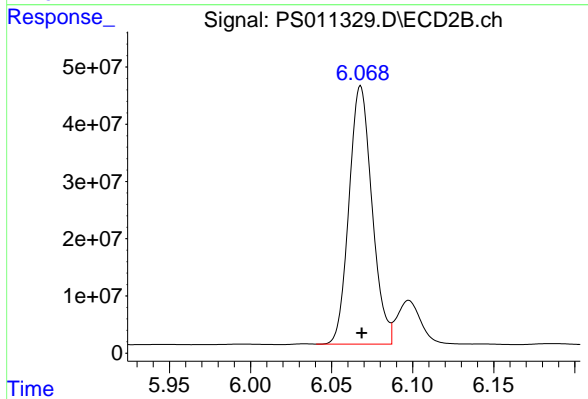
Instrument :  
 ECD\_S  
 ClientSampleId :  
 PB130394BS



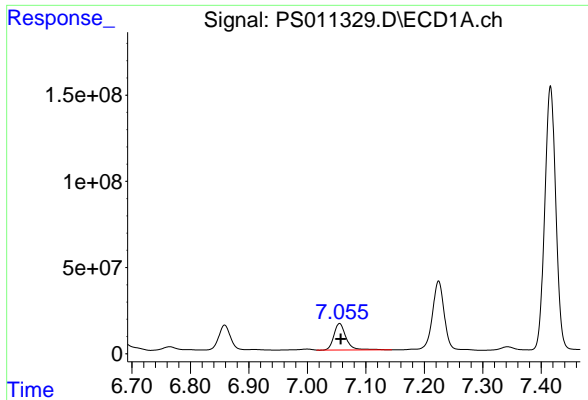
#1 Dalapon  
 R.T.: 2.625 min  
 Delta R.T.: 0.004 min  
 Response: 439050987  
 Conc: 571.93 ng/ml



#2 3,5-DICHLOROBENZOIC ACID  
 R.T.: 6.438 min  
 Delta R.T.: -0.002 min  
 Response: 737515729  
 Conc: 551.14 ng/ml

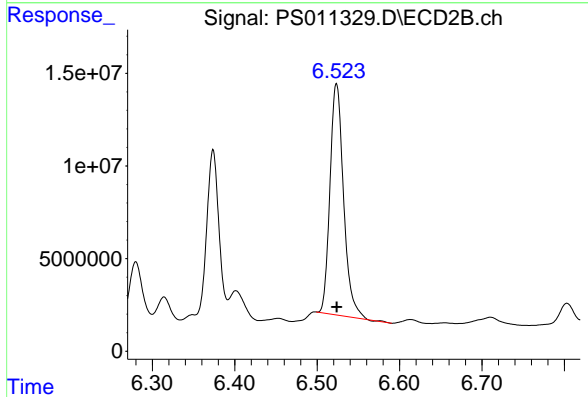


#2 3,5-DICHLOROBENZOIC ACID  
 R.T.: 6.068 min  
 Delta R.T.: 0.000 min  
 Response: 444905563  
 Conc: 529.75 ng/ml

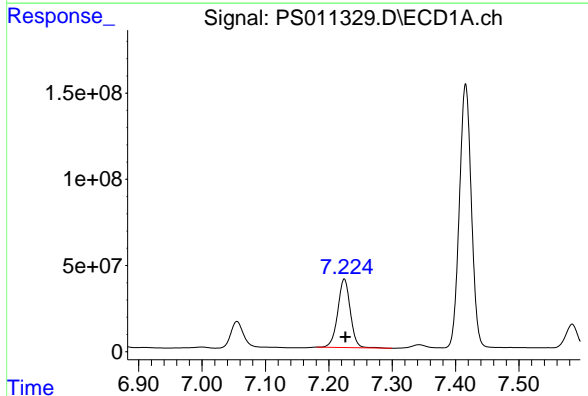


#3 4-Nitrophenol  
R.T.: 7.055 min  
Delta R.T.: -0.002 min  
Response: 222347210  
Conc: 504.37 ng/ml

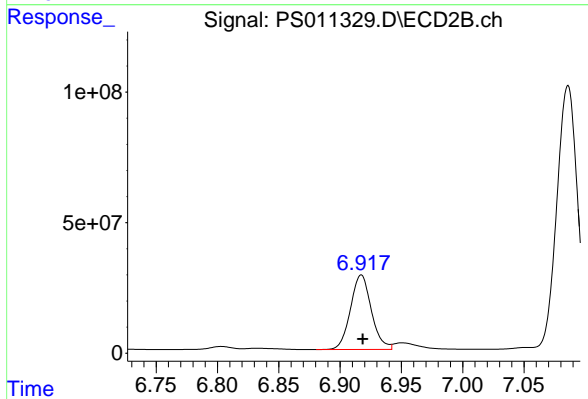
Instrument :  
ECD\_S  
ClientSampleId :  
PB130394BS



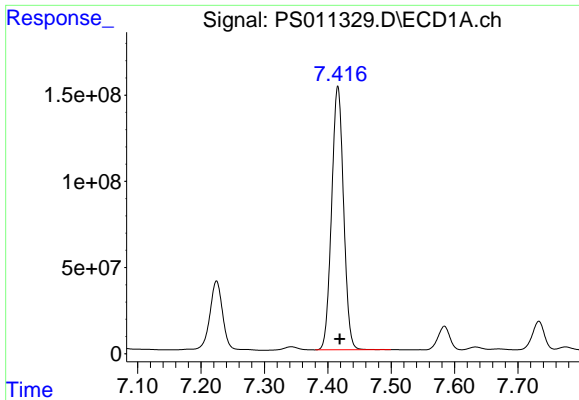
#3 4-Nitrophenol  
R.T.: 6.524 min  
Delta R.T.: 0.000 min  
Response: 143289124  
Conc: 437.02 ng/ml



#4 2,4-DCAA  
R.T.: 7.224 min  
Delta R.T.: -0.002 min  
Response: 547265558  
Conc: 563.99 ng/ml



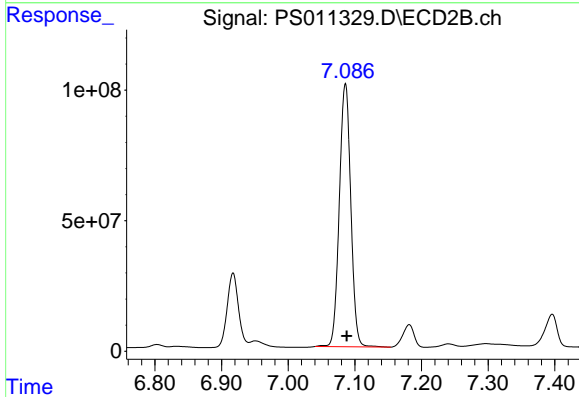
#4 2,4-DCAA  
R.T.: 6.917 min  
Delta R.T.: -0.001 min  
Response: 338630980  
Conc: 601.45 ng/ml



#5 DICAMBA

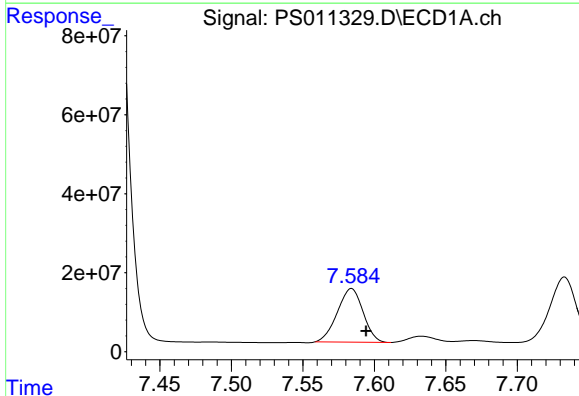
R.T.: 7.416 min  
 Delta R.T.: -0.003 min  
 Response: 2003981693  
 Conc: 517.04 ng/ml

Instrument :  
 ECD\_S  
 ClientSampleId :  
 PB130394BS



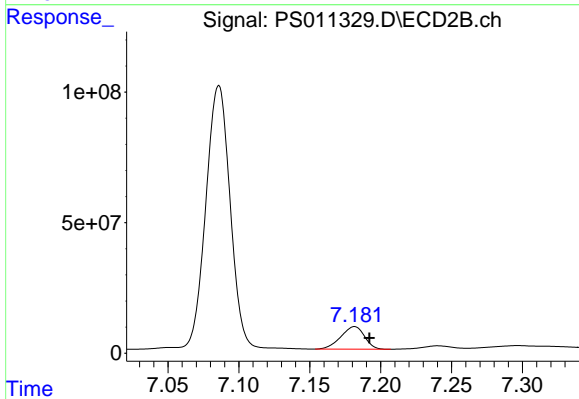
#5 DICAMBA

R.T.: 7.086 min  
 Delta R.T.: -0.002 min  
 Response: 1205830380  
 Conc: 526.57 ng/ml



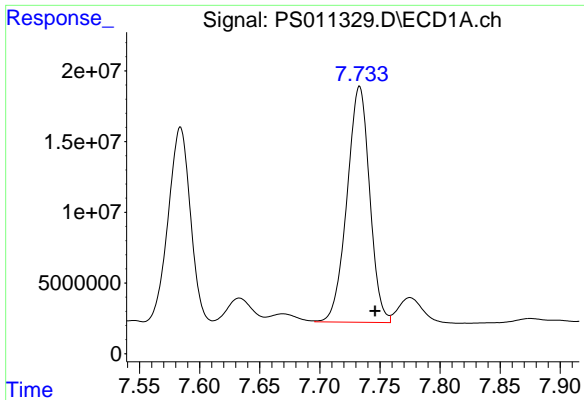
#6 MCPP

R.T.: 7.584 min  
 Delta R.T.: -0.010 min  
 Response: 170165092  
 Conc: 56.19 ug/ml



#6 MCPP

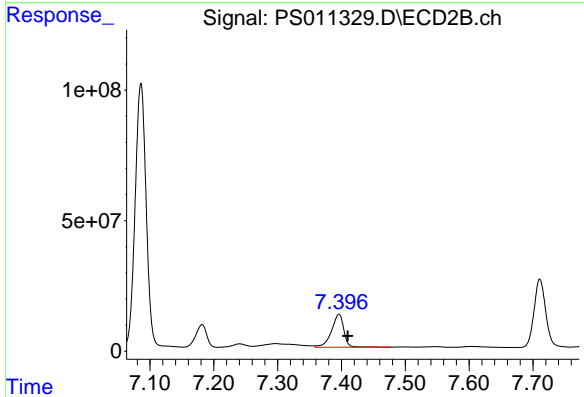
R.T.: 7.181 min  
 Delta R.T.: -0.011 min  
 Response: 100872664  
 Conc: 52.87 ug/ml



#7 MCPA

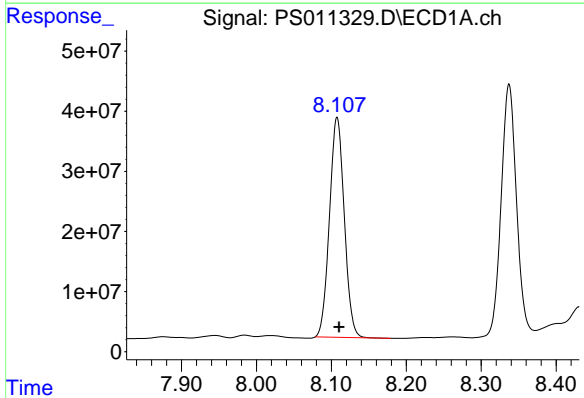
R.T.: 7.733 min  
Delta R.T.: -0.013 min  
Response: 218409342  
Conc: 51.21 ug/ml

Instrument :  
ECD\_S  
ClientSampleId :  
PB130394BS



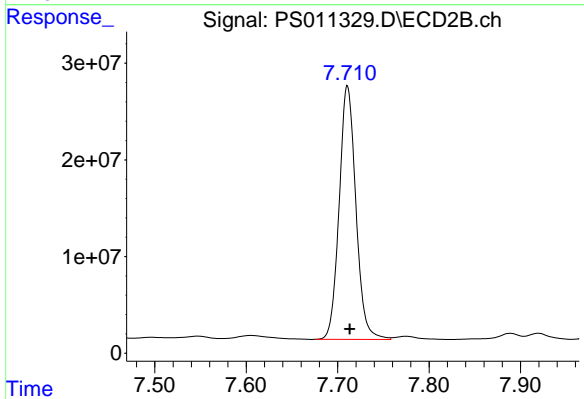
#7 MCPA

R.T.: 7.396 min  
Delta R.T.: -0.014 min  
Response: 168983046  
Conc: 58.63 ug/ml



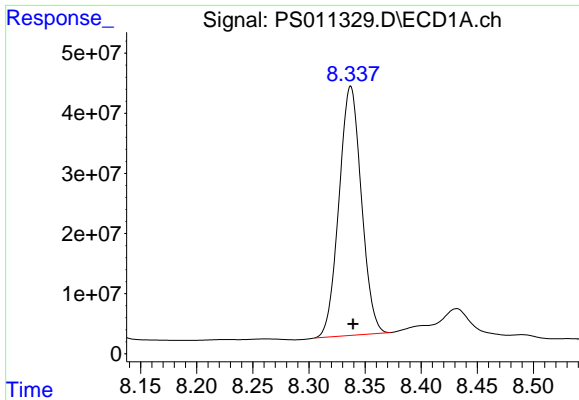
#8 DICHLORPROP

R.T.: 8.108 min  
Delta R.T.: -0.002 min  
Response: 501954813  
Conc: 535.40 ng/ml



#8 DICHLORPROP

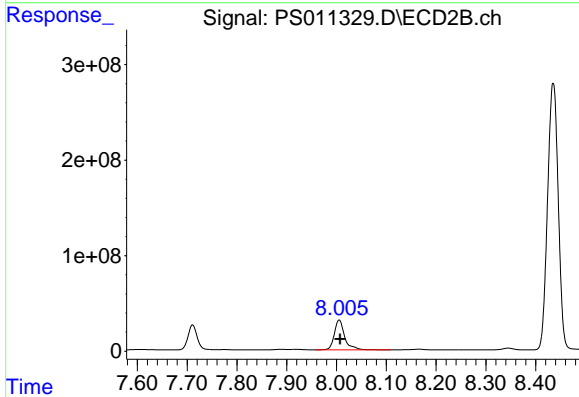
R.T.: 7.711 min  
Delta R.T.: -0.002 min  
Response: 333562254  
Conc: 554.16 ng/ml



#9 2,4-D

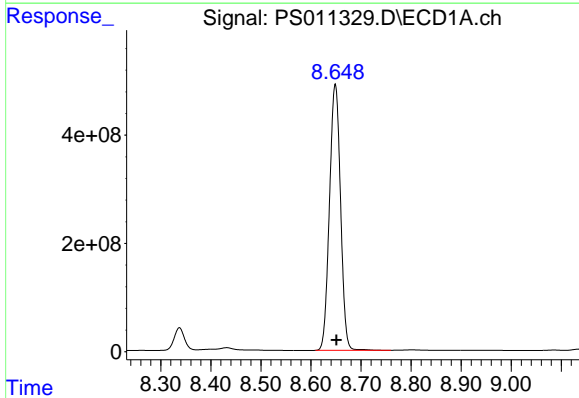
R.T.: 8.337 min  
 Delta R.T.: -0.002 min  
 Response: 574552402  
 Conc: 604.10 ng/ml

Instrument :  
 ECD\_S  
 ClientSampleId :  
 PB130394BS



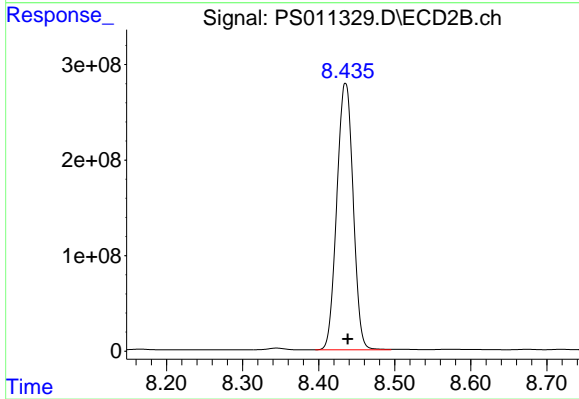
#9 2,4-D

R.T.: 8.005 min  
 Delta R.T.: -0.002 min  
 Response: 454784216  
 Conc: 606.65 ng/ml



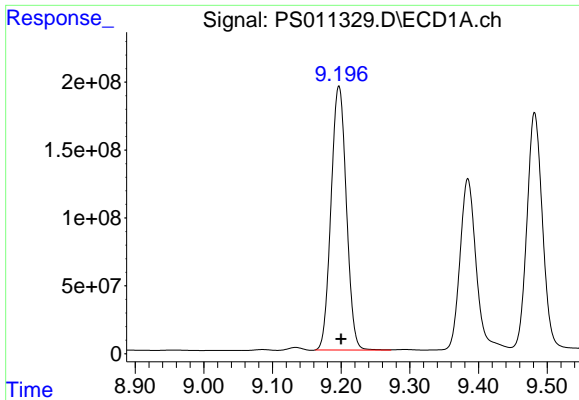
#10 Pentachlorophenol

R.T.: 8.649 min  
 Delta R.T.: -0.003 min  
 Response: 7533339437  
 Conc: 569.90 ng/ml



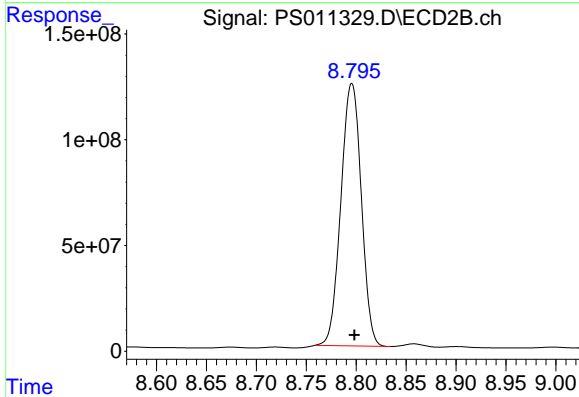
#10 Pentachlorophenol

R.T.: 8.435 min  
 Delta R.T.: -0.003 min  
 Response: 4159934380  
 Conc: 596.86 ng/ml

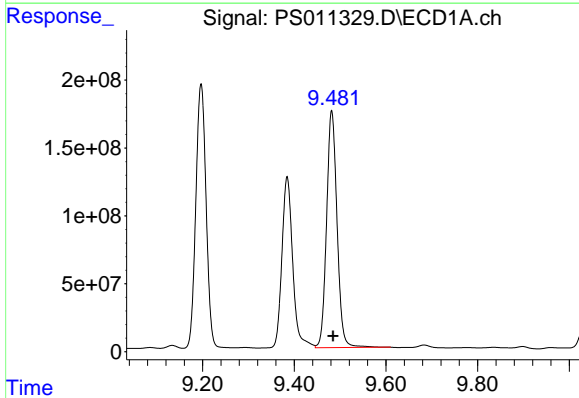


#11 2,4,5-TP (SILVEX)  
 R.T.: 9.197 min  
 Delta R.T.: -0.003 min  
 Response: 3012785404  
 Conc: 568.91 ng/ml

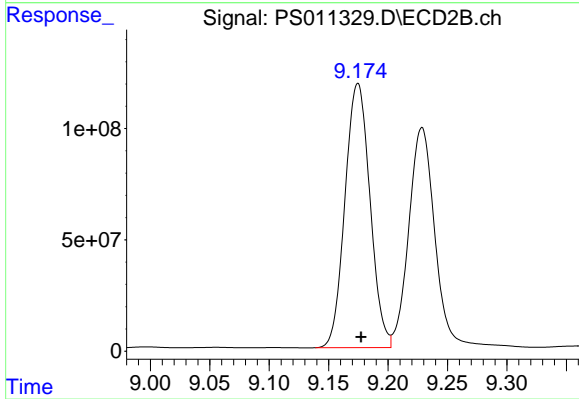
Instrument :  
 ECD\_S  
 ClientSampleId :  
 PB130394BS



#11 2,4,5-TP (SILVEX)  
 R.T.: 8.796 min  
 Delta R.T.: -0.003 min  
 Response: 1766419691  
 Conc: 577.78 ng/ml

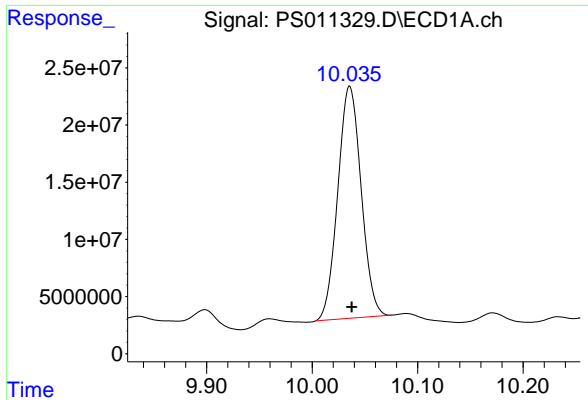


#12 2,4,5-T  
 R.T.: 9.482 min  
 Delta R.T.: -0.003 min  
 Response: 2761679902  
 Conc: 547.31 ng/ml



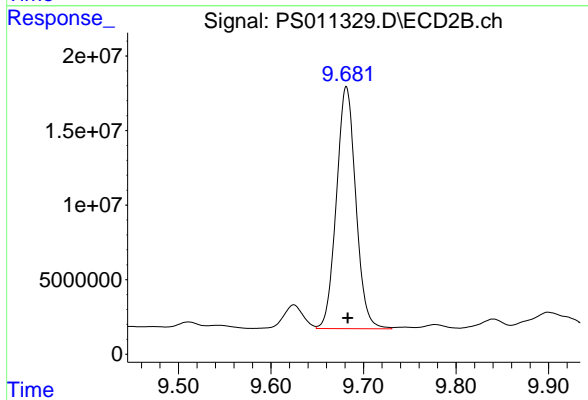
#12 2,4,5-T  
 R.T.: 9.175 min  
 Delta R.T.: -0.003 min  
 Response: 1738987442  
 Conc: 573.35 ng/ml



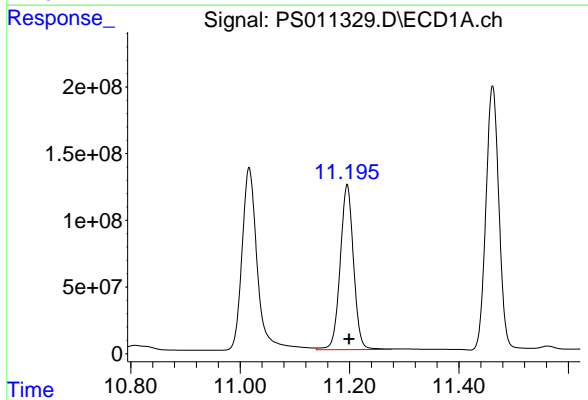


#13 2,4-DB  
 R.T.: 10.036 min  
 Delta R.T.: -0.002 min  
 Response: 311803095  
 Conc: 483.77 ng/ml

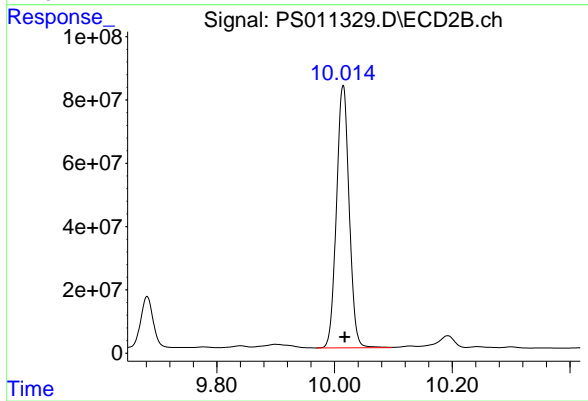
Instrument :  
 ECD\_S  
 ClientSampleId :  
 PB130394BS



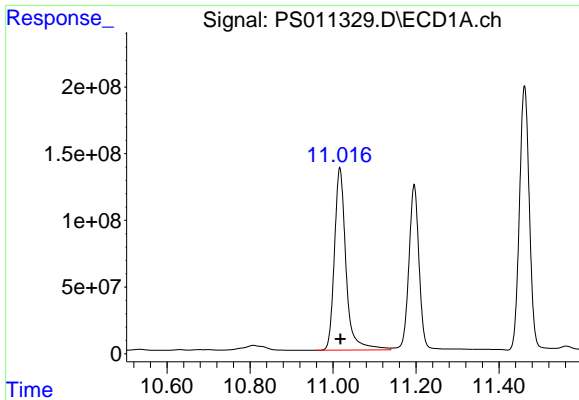
#13 2,4-DB  
 R.T.: 9.682 min  
 Delta R.T.: -0.001 min  
 Response: 236252934  
 Conc: 552.64 ng/ml



#14 DINOSEB  
 R.T.: 11.196 min  
 Delta R.T.: -0.003 min  
 Response: 2094095002  
 Conc: 543.26 ng/ml

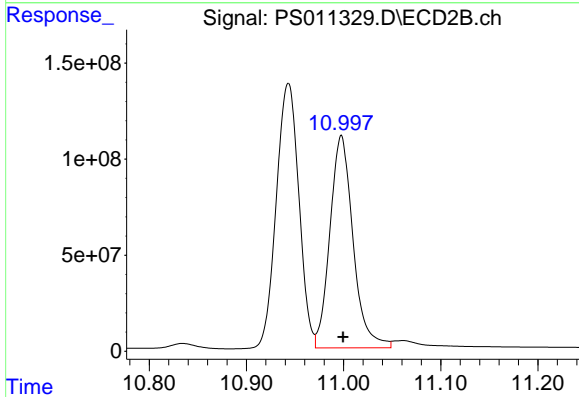


#14 DINOSEB  
 R.T.: 10.015 min  
 Delta R.T.: -0.003 min  
 Response: 1242766066  
 Conc: 579.40 ng/ml

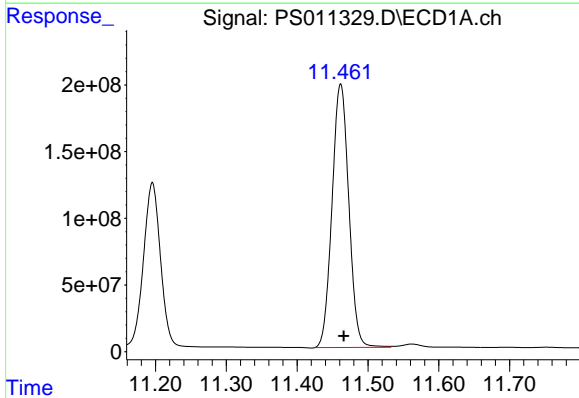


#15 Picloram  
R.T.: 11.016 min  
Delta R.T.: -0.002 min  
Response: 2656333110  
Conc: 420.98 ng/ml

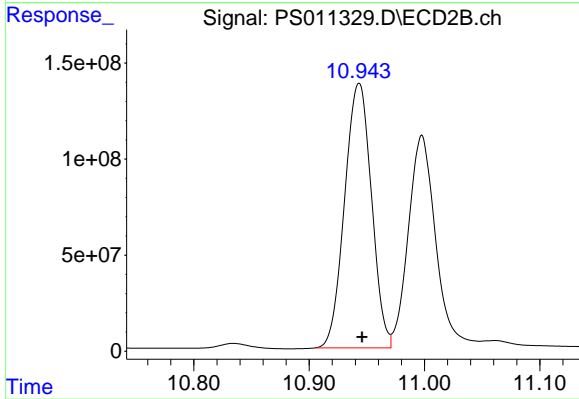
Instrument :  
ECD\_S  
ClientSampleId :  
PB130394BS



#15 Picloram  
R.T.: 10.998 min  
Delta R.T.: -0.002 min  
Response: 1832269071  
Conc: 418.96 ng/ml



#16 DCPA  
R.T.: 11.461 min  
Delta R.T.: -0.004 min  
Response: 3250446176  
Conc: 504.50 ng/ml



#16 DCPA  
R.T.: 10.943 min  
Delta R.T.: -0.003 min  
Response: 2221260940  
Conc: 587.34 ng/ml