

Data Path : Z:\pestpcbsrv\HPCHEM1\ECD_S\Data\PS072220\
 Data File : PS011336.D
 Signal(s) : Signal #1: ECD1A.ch Signal #2: ECD2B.ch
 Acq On : 22 Jul 2020 22:28
 Operator : DD\AJ
 Sample : I.BLK
 Misc :
 ALS Vial : 2 Sample Multiplier: 1

Instrument :
 ECD_S
 ClientSampleId :

Integration File signal 1: autoint1.e
 Integration File signal 2: autoint2.e
 Quant Time: Jul 23 02:49:54 2020
 Quant Method : Z:\pestpcbsrv\HPCHEM1\ECD_S\Method\PS071320.M
 Quant Title : 8080.M
 QLast Update : Mon Jul 13 16:10:29 2020
 Response via : Initial Calibration
 Integrator: ChemStation

Volume Inj. : 2 µl
 Signal #1 Phase : Rtx-CLPesticides Signal #2 Phase: Rtx-CLPesticides2
 Signal #1 Info : 30M x 0.32mm x0.5 Signal #2 Info : 30M x 0.32mm x 0.25µm

Compound	RT#1	RT#2	Resp#1	Resp#2	ng/ml	ng/ml

System Monitoring Compounds						
4) S 2,4-DCAA	7.225	6.917	426.3E6	291.4E6	439.347	517.533

Target Compounds

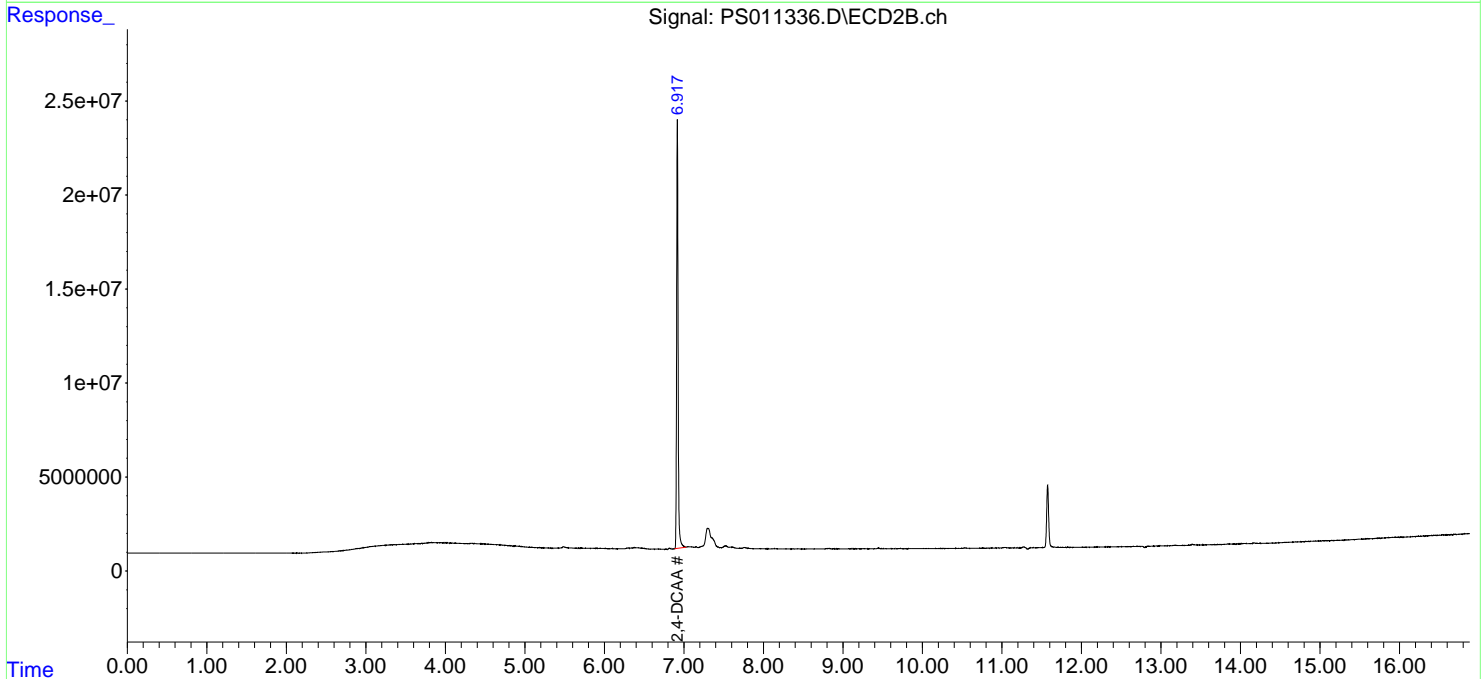
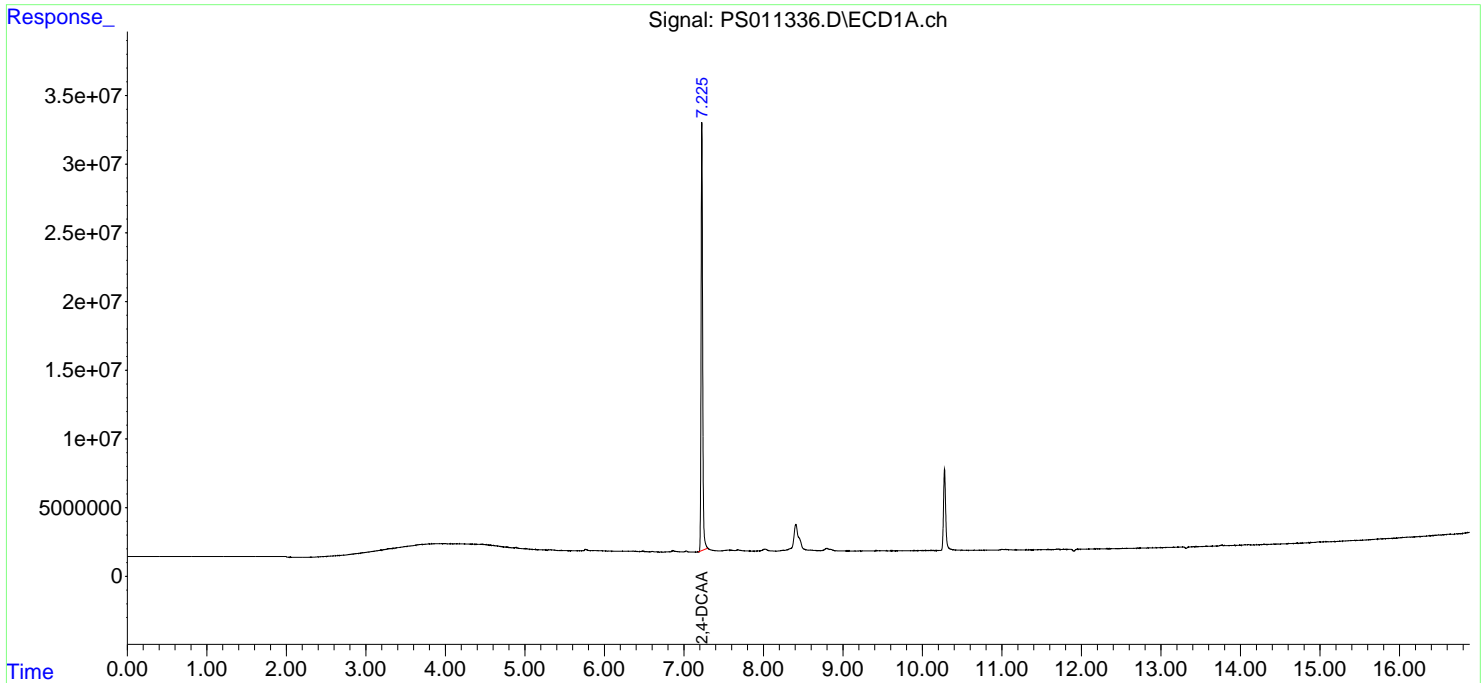
(f)=RT Delta > 1/2 Window (#)=Amounts differ by > 25% (m)=manual int.

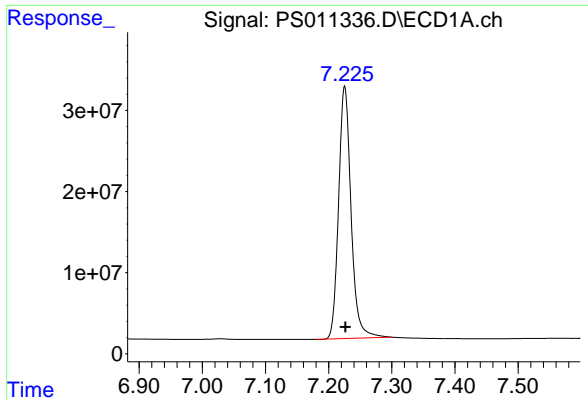
Data Path : Z:\pestpcbsrv\HPCHEM1\ECD_S\Data\PS072220\
 Data File : PS011336.D
 Signal(s) : Signal #1: ECD1A.ch Signal #2: ECD2B.ch
 Acq On : 22 Jul 2020 22:28
 Operator : DD\AJ
 Sample : I.BLK
 Misc :
 ALS Vial : 2 Sample Multiplier: 1

Instrument :
 ECD_S
 ClientSampled :

Integration File signal 1: autoint1.e
 Integration File signal 2: autoint2.e
 Quant Time: Jul 23 02:49:54 2020
 Quant Method : Z:\pestpcbsrv\HPCHEM1\ECD_S\Method\PS071320.M
 Quant Title : 8080.M
 QLast Update : Mon Jul 13 16:10:29 2020
 Response via : Initial Calibration
 Integrator: ChemStation

Volume Inj. : 2 µl
 Signal #1 Phase : Rtx-CLPesticides Signal #2 Phase: Rtx-CLPesticides2
 Signal #1 Info : 30M x 0.32mm x 0.5 Signal #2 Info : 30M x 0.32mm x 0.25µm

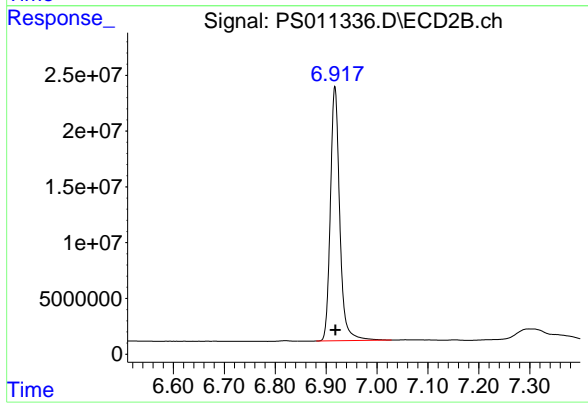




#4 2,4-DCAA

R.T.: 7.225 min
Delta R.T.: 0.000 min
Response: 426314931
Conc: 439.35 ng/ml

Instrument :
ECD_S
ClientSampleId :



#4 2,4-DCAA

R.T.: 6.917 min
Delta R.T.: -0.001 min
Response: 291382948
Conc: 517.53 ng/ml