

Data Path : Z:\pestpcbsrv\HPCHEM1\ECD_S\Data\PS072225\
 Data File : PS031173.D
 Signal(s) : Signal #1: ECD1A.ch Signal #2: ECD2B.ch
 Acq On : 22 Jul 2025 10:11
 Operator : AR\AJ
 Sample : HSTDCCC750
 Misc :
 ALS Vial : 3 Sample Multiplier: 1

Instrument :
 ECD_S
 ClientSampleId :
 HSTDCCC750

Integration File signal 1: autoint1.e
 Integration File signal 2: autoint2.e
 Quant Time: Jul 23 01:53:22 2025
 Quant Method : Z:\pestpcbsrv\HPCHEM1\ECD_S\Method\PS072125.M
 Quant Title : 8080.M
 QLast Update : Tue Jul 22 03:18:42 2025
 Response via : Initial Calibration
 Integrator: ChemStation

Volume Inj. : 1 µl
 Signal #1 Phase : ZB-MR1 Signal #2 Phase: ZB-MR2
 Signal #1 Info : 30M x 0.32mm x0.5 Signal #2 Info : 30M x 0.32mm x 0.25µm

Compound	RT#1	RT#2	Resp#1	Resp#2	ng/ml	ng/ml

System Monitoring Compounds						
4) S 2,4-DCAA	7.323	7.764	3209.7E6	731.1E6	738.152	720.359
Target Compounds						
1) T Dalapon	2.689	2.703	4102.2E6	1826.1E6	653.955	643.743
2) T 3,5-DICHL...	6.485	6.711	3774.7E6	1022.0E6	683.477	663.682
3) T 4-Nitroph...	7.122	7.298	1169.1E6	1194.2E6	709.041	660.053
5) T DICAMBA	7.512	7.966	11500.0E6	4457.3E6	697.096	690.699
6) T MCPP	7.693	8.065	725.9E6	144.7E6	72.518	69.624
7) T MCPA	7.843	8.314	892.8E6	215.0E6	71.345	68.154
8) T DICHLORPROP	8.223	8.685	2607.8E6	1023.0E6	682.328	675.289
9) T 2,4-D	8.455	9.022	2634.9E6	1149.9E6	705.485	677.084
10) T Pentachlo...	8.762	9.545	41070.3E6	27957.8E6	751.906	715.376
11) T 2,4,5-TP ...	9.339	9.926	15621.5E6	10389.3E6	711.571	697.539
12) T 2,4,5-T	9.634	10.353	14349.1E6	9904.0E6	734.804	696.507
13) T 2,4-DB	10.210	10.921	2243.1E6	812.8E6	750.224	694.373
14) T DINOSEB	11.425	11.305	10877.6E6	7741.1E6	698.647	684.931
15) T Picloram	11.235	12.416	15271.7E6	17885.1E6	763.336	718.420
16) T DCPA	11.721	12.349	20621.6E6	16379.6E6	718.686	711.042

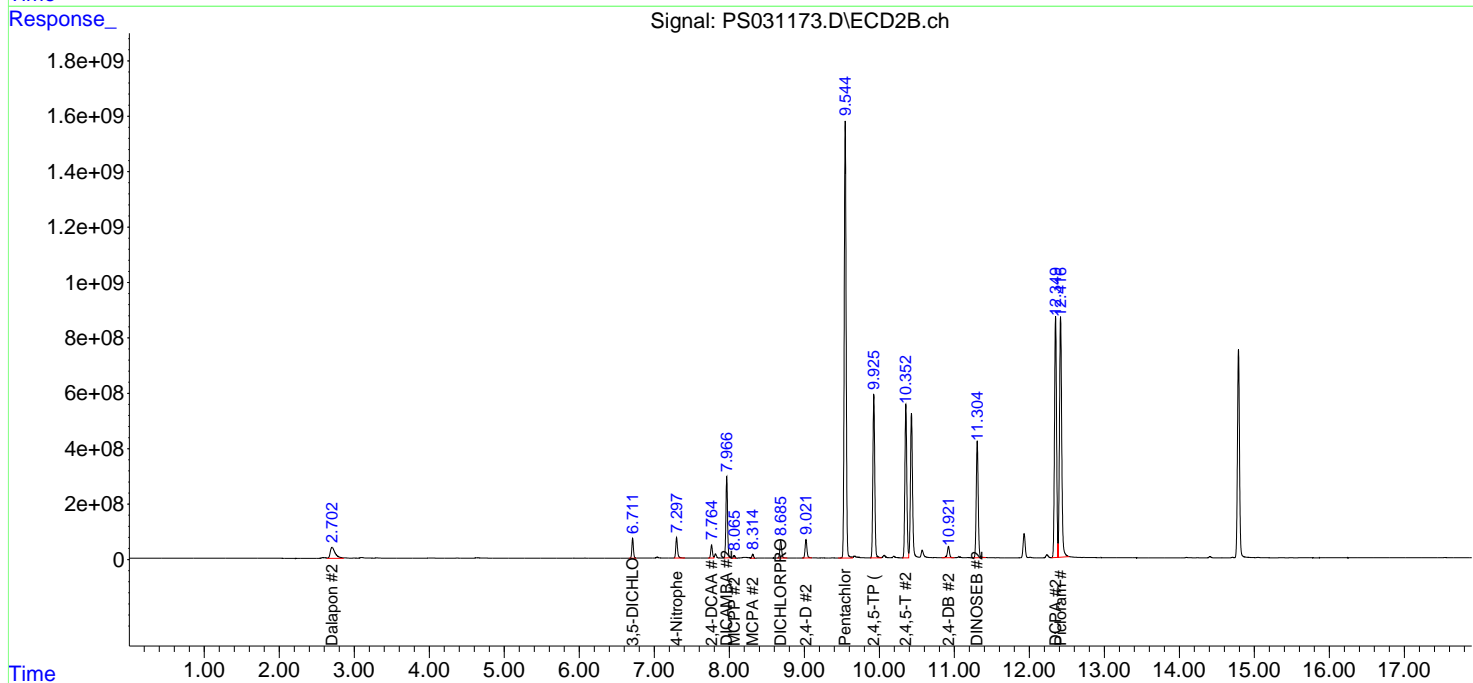
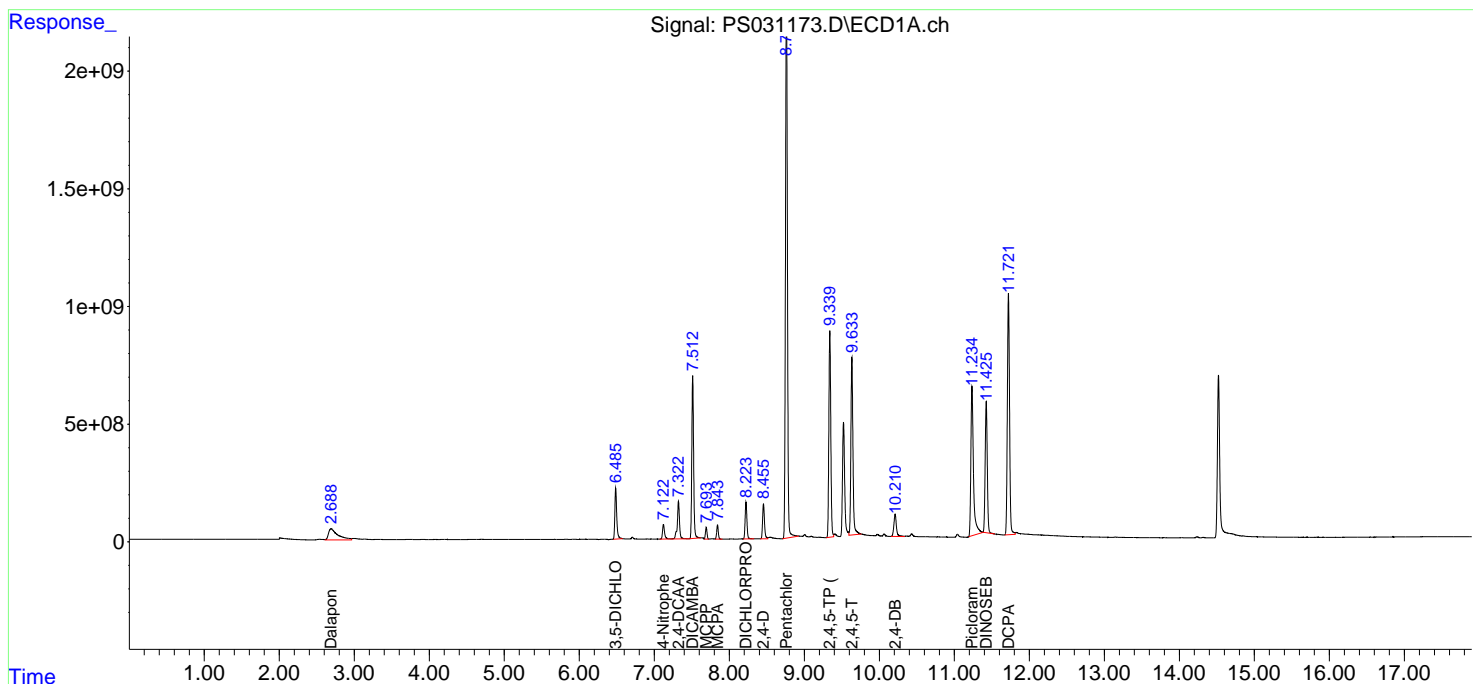
(f)=RT Delta > 1/2 Window (#)=Amounts differ by > 25% (m)=manual int.

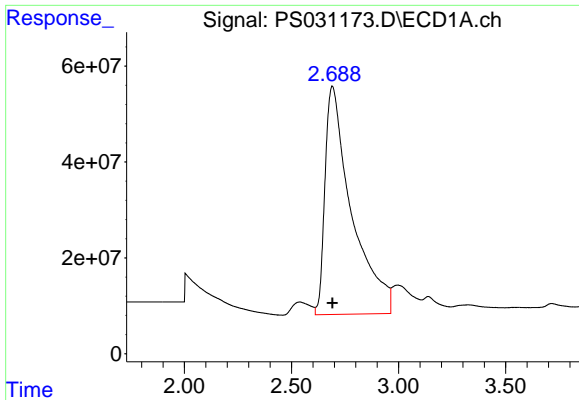
Data Path : Z:\pestpcbsrv\HPCHEM1\ECD_S\Data\PS072225\
 Data File : PS031173.D
 Signal(s) : Signal #1: ECD1A.ch Signal #2: ECD2B.ch
 Acq On : 22 Jul 2025 10:11
 Operator : AR\AJ
 Sample : HSTDCCC750
 Misc :
 ALS Vial : 3 Sample Multiplier: 1

Instrument :
 ECD_S
 ClientSampleId :
 HSTDCCC750

Integration File signal 1: autoint1.e
 Integration File signal 2: autoint2.e
 Quant Time: Jul 23 01:53:22 2025
 Quant Method : Z:\pestpcbsrv\HPCHEM1\ECD_S\Method\PS072125.M
 Quant Title : 8080.M
 QLast Update : Tue Jul 22 03:18:42 2025
 Response via : Initial Calibration
 Integrator: ChemStation

Volume Inj. : 1 µl
 Signal #1 Phase : ZB-MR1 Signal #2 Phase: ZB-MR2
 Signal #1 Info : 30M x 0.32mm x0.5 Signal #2 Info : 30M x 0.32mm x 0.25µm

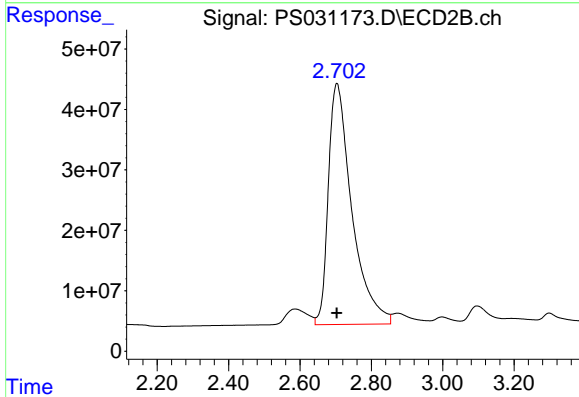




#1 Dalapon

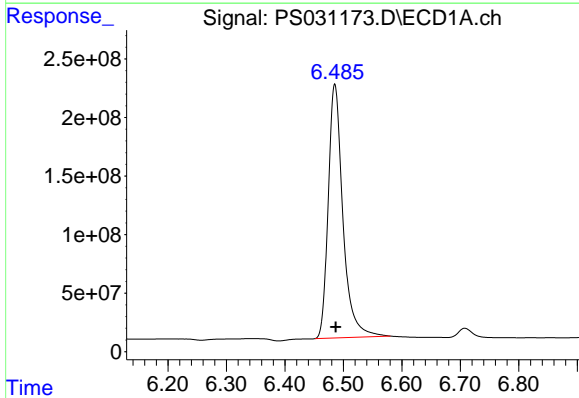
R.T.: 2.689 min
 Delta R.T.: 0.000 min
 Response: 4102194944
 Conc: 653.95 ng/ml

Instrument :
 ECD_S
 ClientSampleId :
 HSTDCCC750



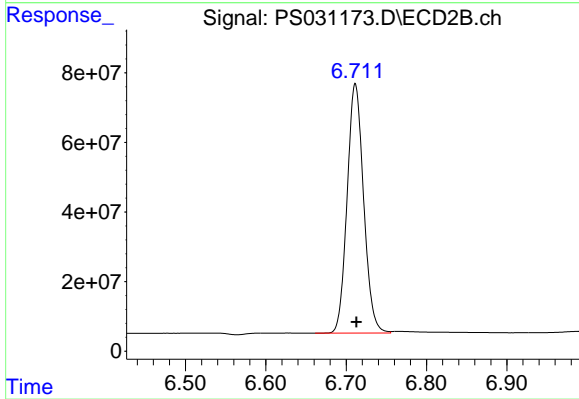
#1 Dalapon

R.T.: 2.703 min
 Delta R.T.: 0.000 min
 Response: 1826132031
 Conc: 643.74 ng/ml



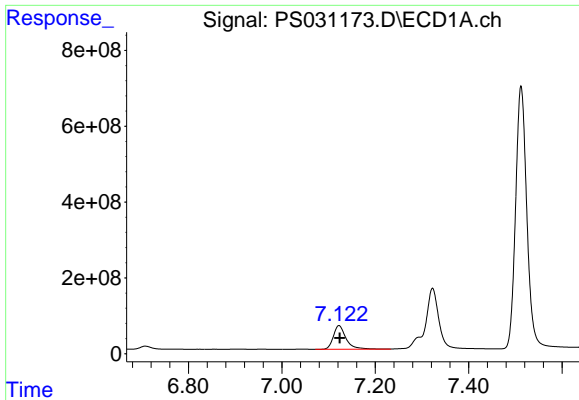
#2 3,5-DICHLOROBENZOIC ACID

R.T.: 6.485 min
 Delta R.T.: -0.001 min
 Response: 3774675727
 Conc: 683.48 ng/ml



#2 3,5-DICHLOROBENZOIC ACID

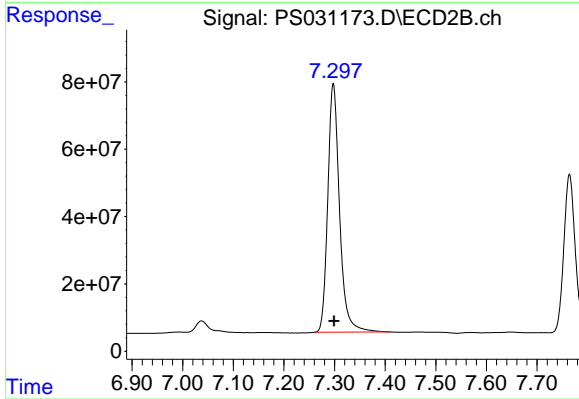
R.T.: 6.711 min
 Delta R.T.: -0.002 min
 Response: 1022000616
 Conc: 663.68 ng/ml



#3 4-Nitrophenol

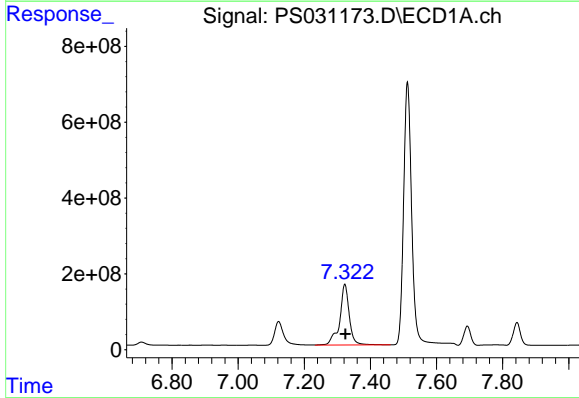
R.T.: 7.122 min
 Delta R.T.: -0.002 min
 Response: 1169056564
 Conc: 709.04 ng/ml

Instrument :
 ECD_S
 ClientSampleId :
 HSTDCCC750



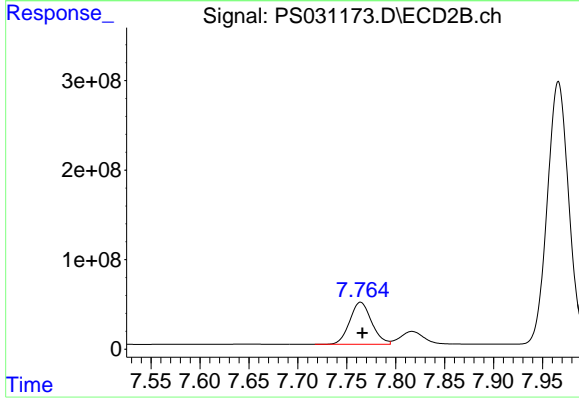
#3 4-Nitrophenol

R.T.: 7.298 min
 Delta R.T.: -0.001 min
 Response: 1194245718
 Conc: 660.05 ng/ml



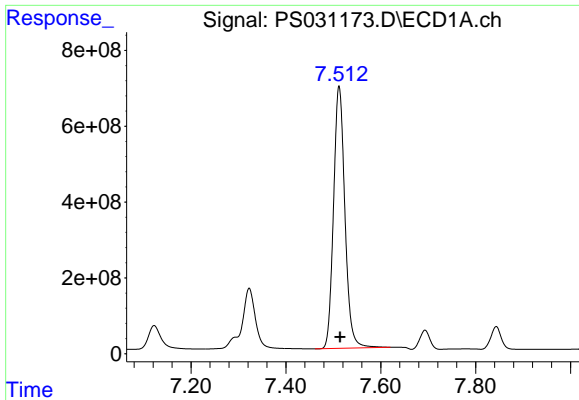
#4 2,4-DCAA

R.T.: 7.323 min
 Delta R.T.: -0.002 min
 Response: 3209671577
 Conc: 738.15 ng/ml



#4 2,4-DCAA

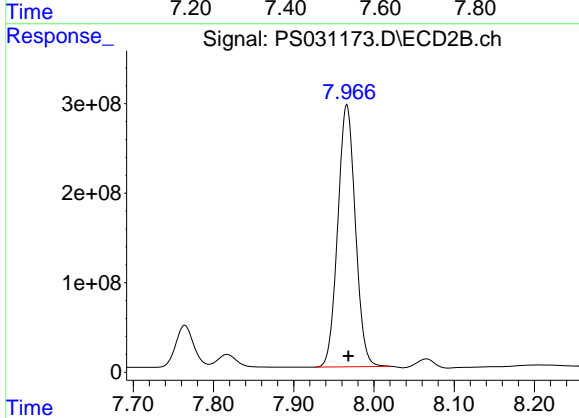
R.T.: 7.764 min
 Delta R.T.: -0.002 min
 Response: 731141249
 Conc: 720.36 ng/ml



#5 DICAMBA

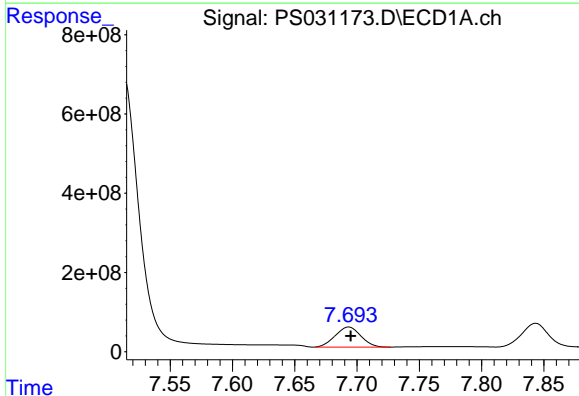
R.T.: 7.512 min
 Delta R.T.: -0.002 min
 Response: 11499974815
 Conc: 697.10 ng/ml

Instrument :
 ECD_S
 ClientSampleId :
 HSTDCCC750



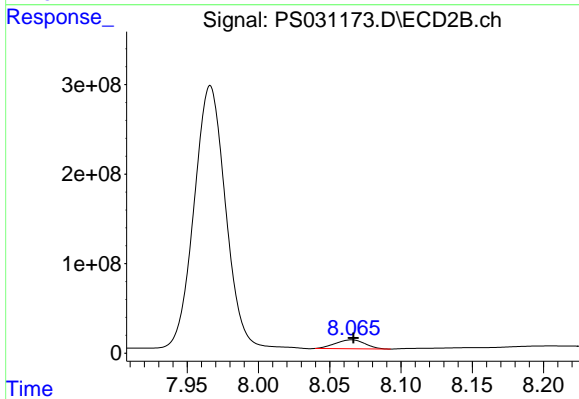
#5 DICAMBA

R.T.: 7.966 min
 Delta R.T.: -0.002 min
 Response: 4457338471
 Conc: 690.70 ng/ml



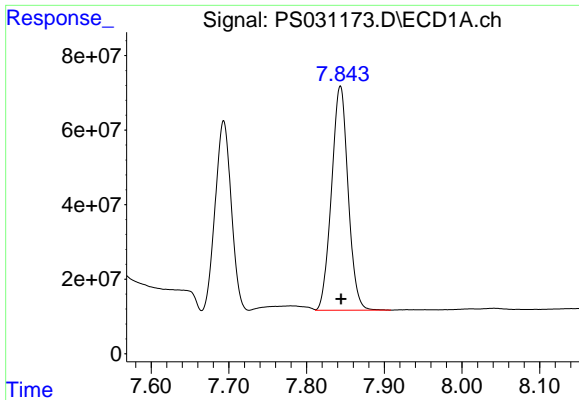
#6 MCP

R.T.: 7.693 min
 Delta R.T.: -0.002 min
 Response: 725908630
 Conc: 72.52 ug/ml



#6 MCP

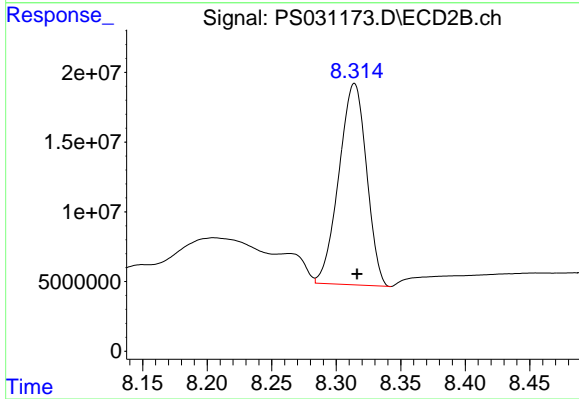
R.T.: 8.065 min
 Delta R.T.: -0.001 min
 Response: 144665612
 Conc: 69.62 ug/ml



#7 MCPA

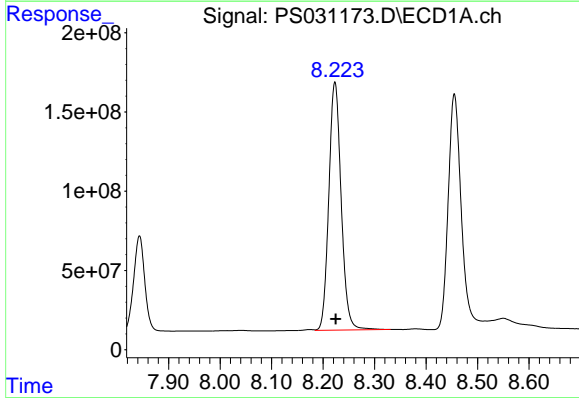
R.T.: 7.843 min
 Delta R.T.: -0.001 min
 Response: 892822031
 Conc: 71.34 ug/ml

Instrument :
 ECD_S
 ClientSampleId :
 HSTDCCC750



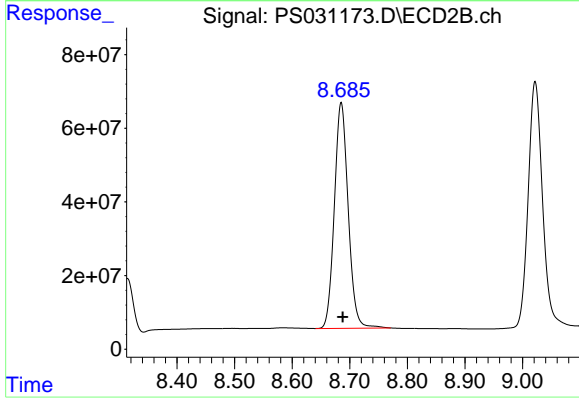
#7 MCPA

R.T.: 8.314 min
 Delta R.T.: -0.002 min
 Response: 215041045
 Conc: 68.15 ug/ml



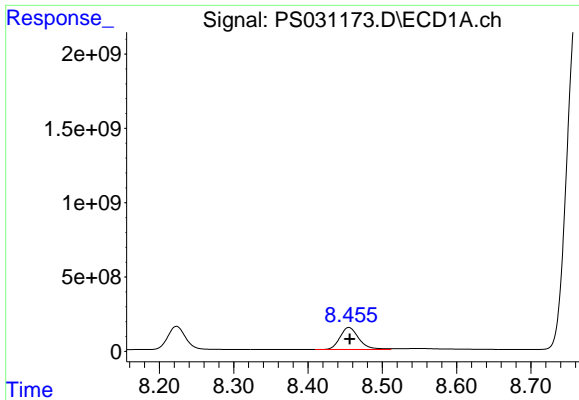
#8 DICHLORPROP

R.T.: 8.223 min
 Delta R.T.: -0.001 min
 Response: 2607829039
 Conc: 682.33 ng/ml



#8 DICHLORPROP

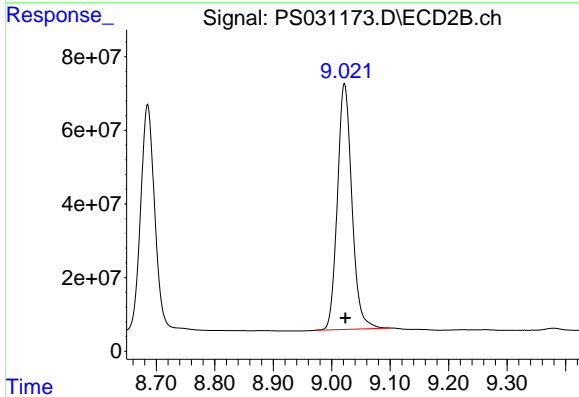
R.T.: 8.685 min
 Delta R.T.: -0.002 min
 Response: 1022968251
 Conc: 675.29 ng/ml



#9 2,4-D

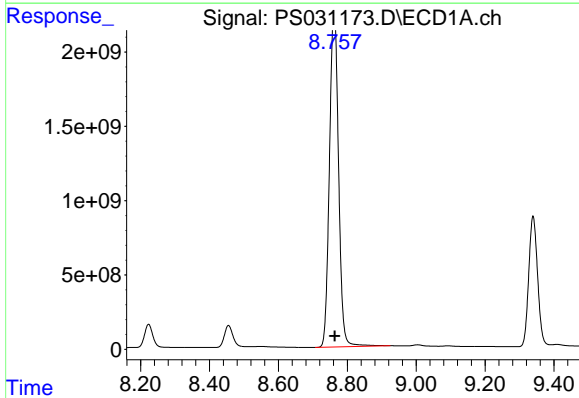
R.T.: 8.455 min
Delta R.T.: -0.001 min
Response: 2634928953
Conc: 705.49 ng/ml

Instrument :
ECD_S
ClientSampleId :
HSTDCCC750



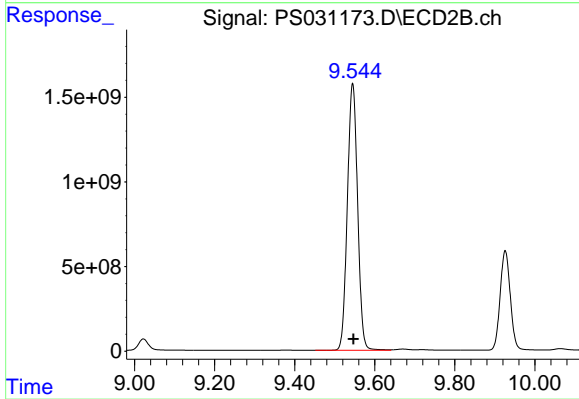
#9 2,4-D

R.T.: 9.022 min
Delta R.T.: -0.002 min
Response: 1149905328
Conc: 677.08 ng/ml



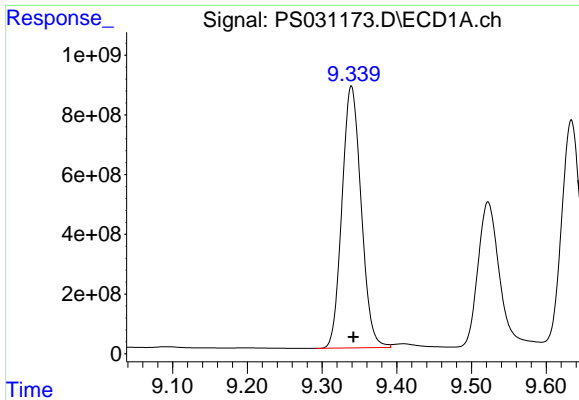
#10 Pentachlorophenol

R.T.: 8.762 min
Delta R.T.: -0.002 min
Response: 41070283115
Conc: 751.91 ng/ml



#10 Pentachlorophenol

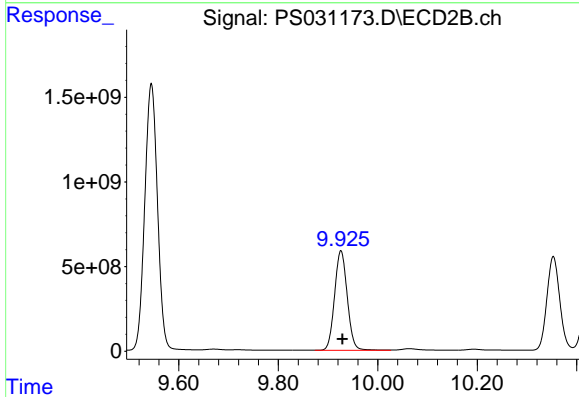
R.T.: 9.545 min
Delta R.T.: -0.002 min
Response: 27957762125
Conc: 715.38 ng/ml



#11 2,4,5-TP (SILVEX)

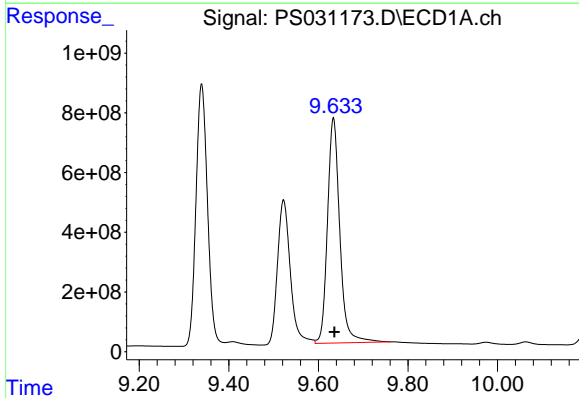
R.T.: 9.339 min
 Delta R.T.: -0.003 min
 Response: 15621521449
 Conc: 711.57 ng/ml

Instrument :
 ECD_S
 ClientSampleId :
 HSTDCCC750



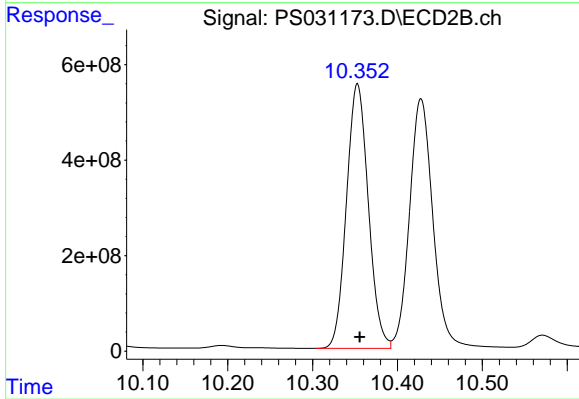
#11 2,4,5-TP (SILVEX)

R.T.: 9.926 min
 Delta R.T.: -0.003 min
 Response: 10389278683
 Conc: 697.54 ng/ml



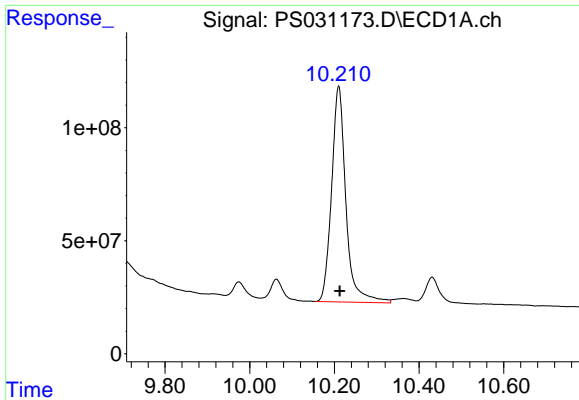
#12 2,4,5-T

R.T.: 9.634 min
 Delta R.T.: -0.002 min
 Response: 14349103876
 Conc: 734.80 ng/ml



#12 2,4,5-T

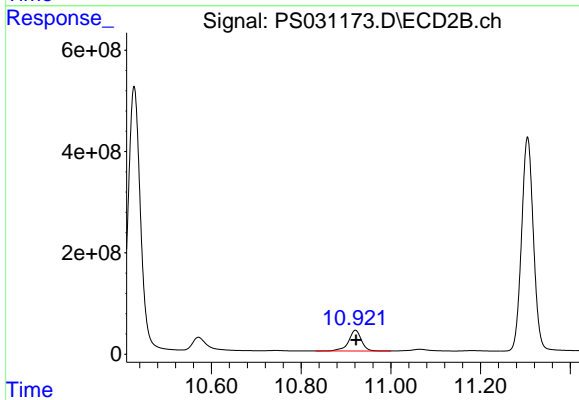
R.T.: 10.353 min
 Delta R.T.: -0.003 min
 Response: 9903953875
 Conc: 696.51 ng/ml



#13 2,4-DB

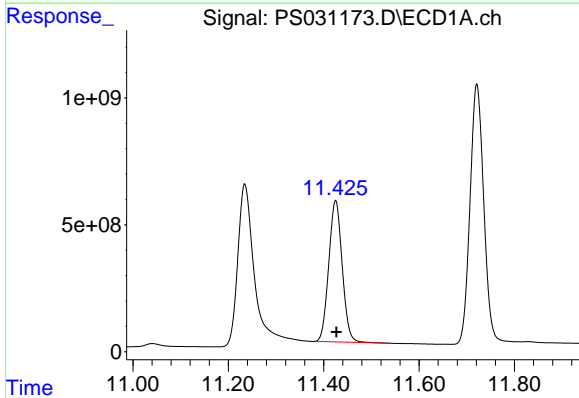
R.T.: 10.210 min
Delta R.T.: -0.002 min
Response: 2243081834
Conc: 750.22 ng/ml

Instrument :
ECD_S
ClientSampleId :
HSTDCCC750



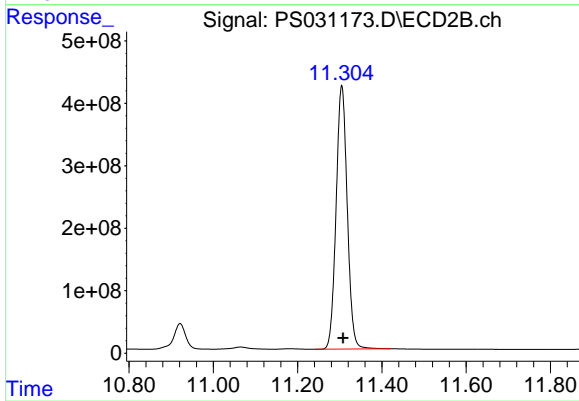
#13 2,4-DB

R.T.: 10.921 min
Delta R.T.: -0.002 min
Response: 812771637
Conc: 694.37 ng/ml



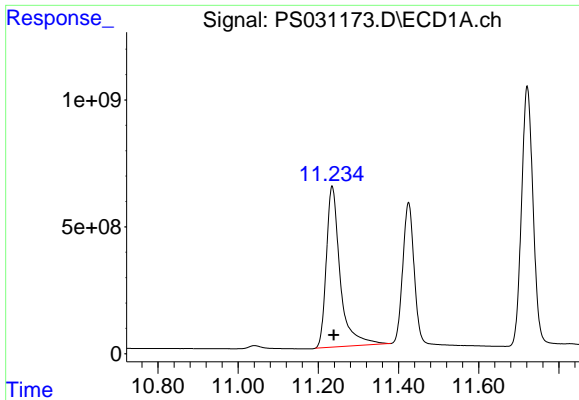
#14 DINOSEB

R.T.: 11.425 min
Delta R.T.: -0.002 min
Response: 10877582073
Conc: 698.65 ng/ml



#14 DINOSEB

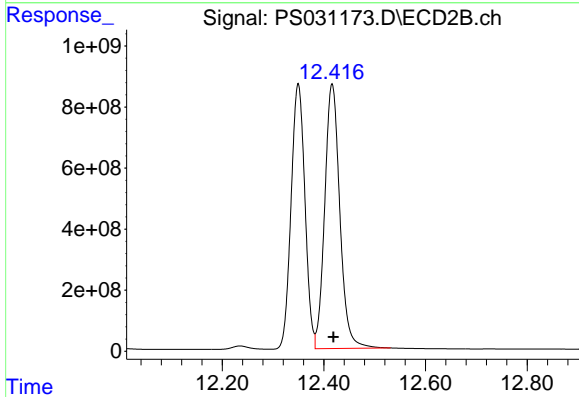
R.T.: 11.305 min
Delta R.T.: -0.003 min
Response: 7741149137
Conc: 684.93 ng/ml



#15 Picloram

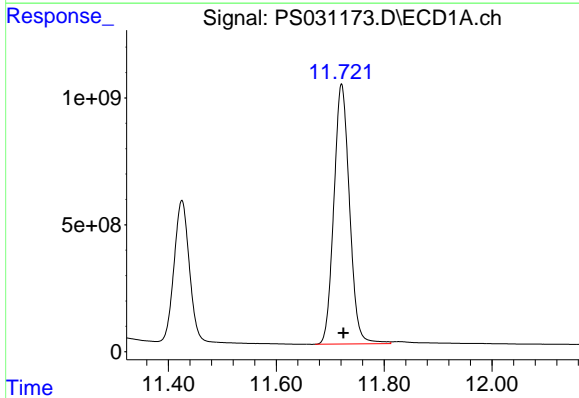
R.T.: 11.235 min
 Delta R.T.: -0.004 min
 Response: 15271745084
 Conc: 763.34 ng/ml

Instrument :
 ECD_S
 ClientSampleId :
 HSTDCCC750



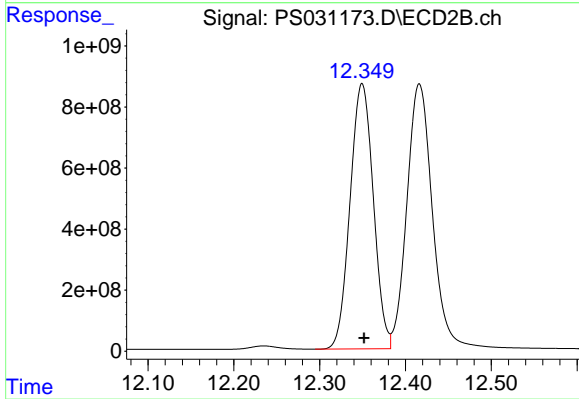
#15 Picloram

R.T.: 12.416 min
 Delta R.T.: -0.002 min
 Response: 17885091474
 Conc: 718.42 ng/ml



#16 DCPA

R.T.: 11.721 min
 Delta R.T.: -0.003 min
 Response: 20621598094
 Conc: 718.69 ng/ml



#16 DCPA

R.T.: 12.349 min
 Delta R.T.: -0.002 min
 Response: 16379584066
 Conc: 711.04 ng/ml