

Data Path : Z:\pestpcbsrv\HPCHEM1\ECD_S\Data\PS072225\
 Data File : PS031175.D
 Signal(s) : Signal #1: ECD1A.ch Signal #2: ECD2B.ch
 Acq On : 22 Jul 2025 14:12
 Operator : AR\AJ
 Sample : Q2555-01
 Misc :
 ALS Vial : 5 Sample Multiplier: 1

Instrument :
 ECD_S
 ClientSampleId :
 OU4-TS-29-070925

Integration File signal 1: autoint1.e
 Integration File signal 2: autoint2.e
 Quant Time: Jul 23 01:54:10 2025
 Quant Method : Z:\pestpcbsrv\HPCHEM1\ECD_S\Method\PS072125.M
 Quant Title : 8080.M
 QLast Update : Tue Jul 22 03:18:42 2025
 Response via : Initial Calibration
 Integrator: ChemStation

Volume Inj. : 1 µl
 Signal #1 Phase : ZB-MR2 Signal #2 Phase: ZB-MR2
 Signal #1 Info : 30M x 0.32mm x0.5 Signal #2 Info : 30M x 0.32mm x 0.25µm

Compound	RT#1	RT#2	Resp#1	Resp#2	ng/ml	ng/ml

System Monitoring Compounds						
4) S 2,4-DCAA	7.322	7.764	716.8E6	258.3E6	164.853	254.485 #
Target Compounds						
1) T Dalapon	2.655f	2.691	1579.1E6	1795.1E6	251.738	632.787 #
2) T 3,5-DICHL...	6.508	6.682f	11266582	20007273	2.040	12.993 #
3) T 4-Nitroph...	7.082f	7.290	15974526	33301088	9.689	18.405 #
5) T DICAMBA	7.526	7.973	17216744	2354748	1.044	<MDL #
6) T MCPP	7.676	8.071	17500420	34225576	1.748	16.472 #
7) T MCPA	7.851	8.280f	48683645	143.9E6	3.890	45.611 #
8) T DICHLORPROP	8.193f	8.700	28212885	23865059	7.382	15.754 #
10) T Pentachlo...	8.751	9.541	15347905	21900928	<MDL	<MDL #
11) T 2,4,5-TP ...	9.347	9.900f	25477045	80458891	1.160	5.402 #
12) T 2,4,5-T	9.602f	10.354	33476905	353.6E6	1.714	24.864 #
13) T 2,4-DB	10.203	10.898	157.0E6	-61076646	52.510	N.D. #
14) T DINOSEB	11.437	11.314	37338025	1723.1E6	2.398	152.458 #
15) T Picloram	11.238	12.420	83793646	85279444	4.188	3.426
16) T DCPA	11.690f	12.314f	19029951	18163220	<MDL	<MDL #

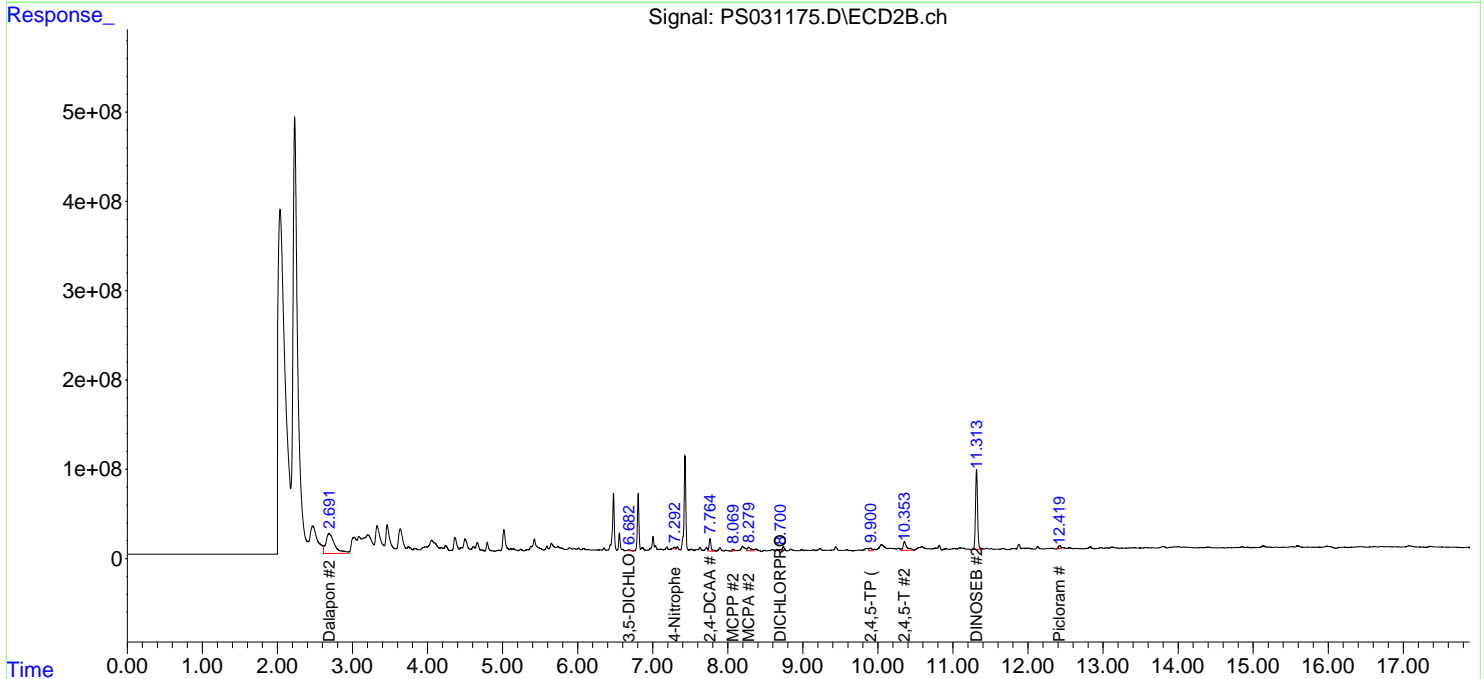
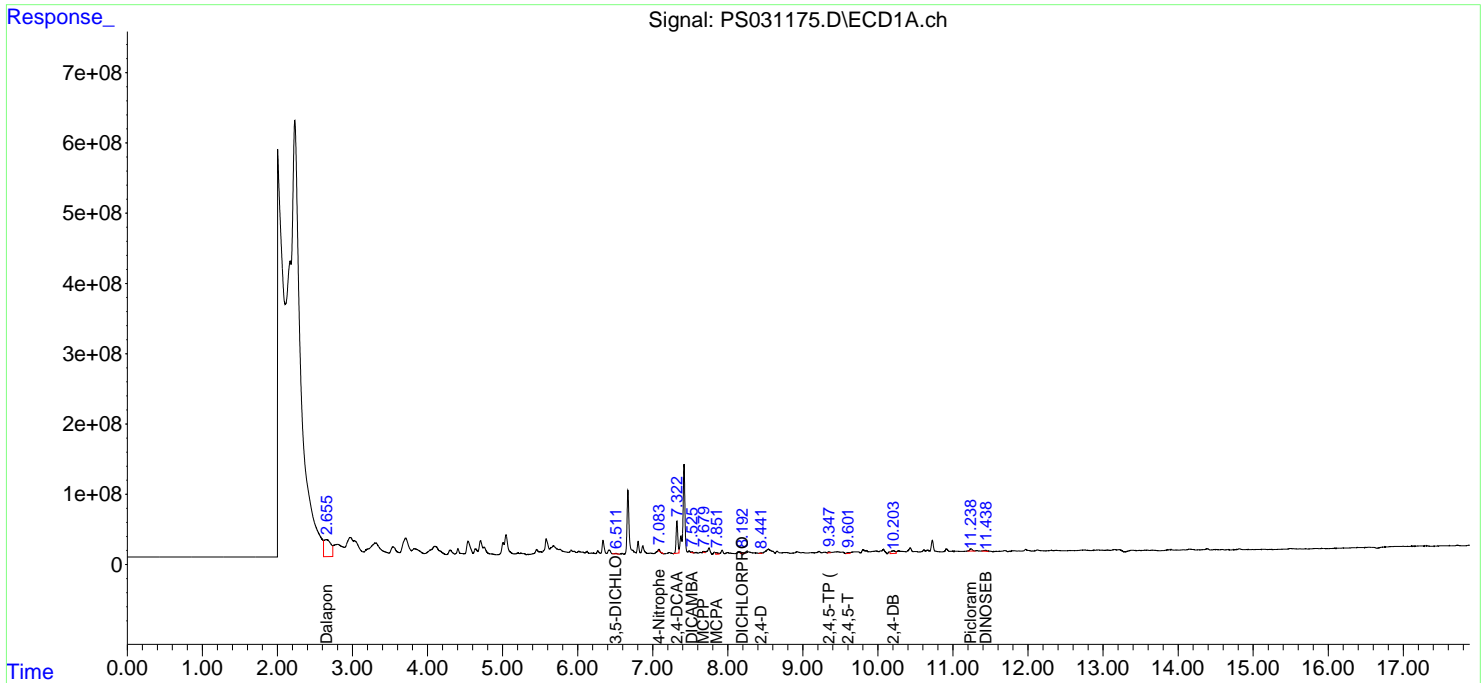
(f)=RT Delta > 1/2 Window (#)=Amounts differ by > 25% (m)=manual int.

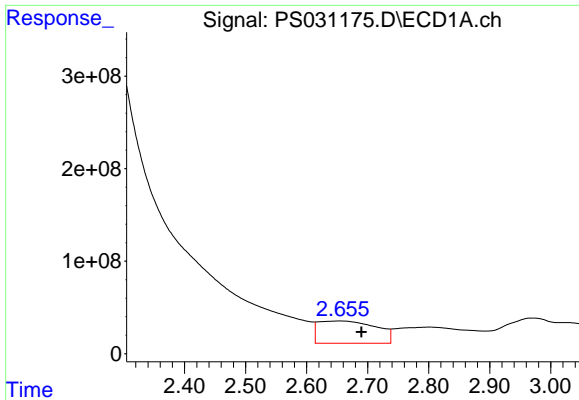
Data Path : Z:\pestpcbsrv\HPCHEM1\ECD_S\Data\PS072225\
 Data File : PS031175.D
 Signal(s) : Signal #1: ECD1A.ch Signal #2: ECD2B.ch
 Acq On : 22 Jul 2025 14:12
 Operator : AR\AJ
 Sample : Q2555-01
 Misc :
 ALS Vial : 5 Sample Multiplier: 1

Instrument :
 ECD_S
 ClientSampleId :
 OU4-TS-29-070925

Integration File signal 1: autoint1.e
 Integration File signal 2: autoint2.e
 Quant Time: Jul 23 01:54:10 2025
 Quant Method : Z:\pestpcbsrv\HPCHEM1\ECD_S\Method\PS072125.M
 Quant Title : 8080.M
 QLast Update : Tue Jul 22 03:18:42 2025
 Response via : Initial Calibration
 Integrator: ChemStation

Volume Inj. : 1 µl
 Signal #1 Phase : ZB-MR1 Signal #2 Phase: ZB-MR2
 Signal #1 Info : 30M x 0.32mm x0.5 Signal #2 Info : 30M x 0.32mm x 0.25µm

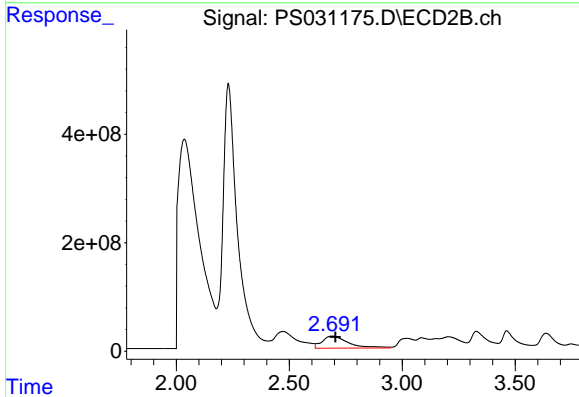




#1 Dalapon

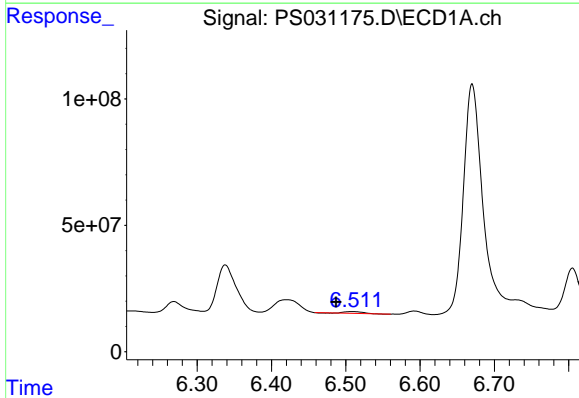
R.T.: 2.655 min
 Delta R.T.: -0.035 min
 Response: 1579127855
 Conc: 251.74 ng/ml

Instrument :
 ECD_S
 ClientSampleId :
 OU4-TS-29-070925



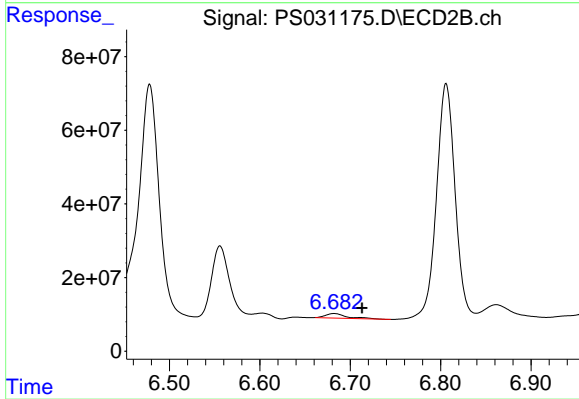
#1 Dalapon

R.T.: 2.691 min
 Delta R.T.: -0.013 min
 Response: 1795051816
 Conc: 632.79 ng/ml



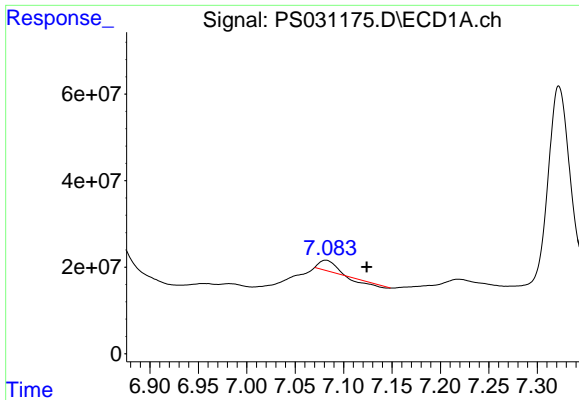
#2 3,5-DICHLOROBENZOIC ACID

R.T.: 6.508 min
 Delta R.T.: 0.021 min
 Response: 11266582
 Conc: 2.04 ng/ml



#2 3,5-DICHLOROBENZOIC ACID

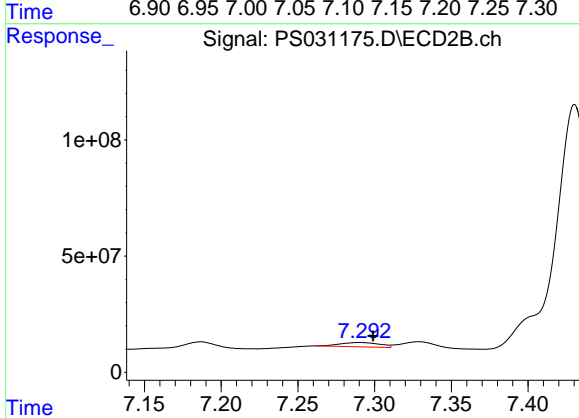
R.T.: 6.682 min
 Delta R.T.: -0.031 min
 Response: 20007273
 Conc: 12.99 ng/ml



#3 4-Nitrophenol

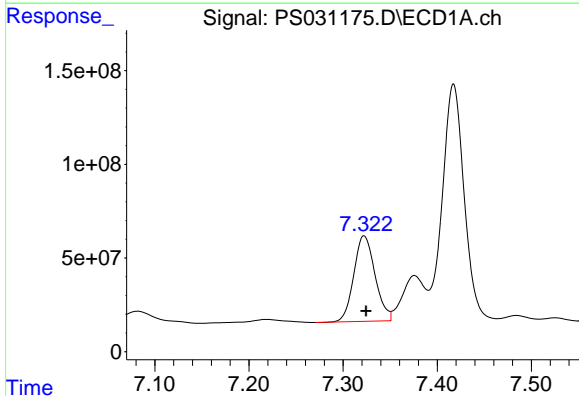
R.T.: 7.082 min
 Delta R.T.: -0.042 min
 Response: 15974526
 Conc: 9.69 ng/ml

Instrument :
 ECD_S
 ClientSampleId :
 OU4-TS-29-070925



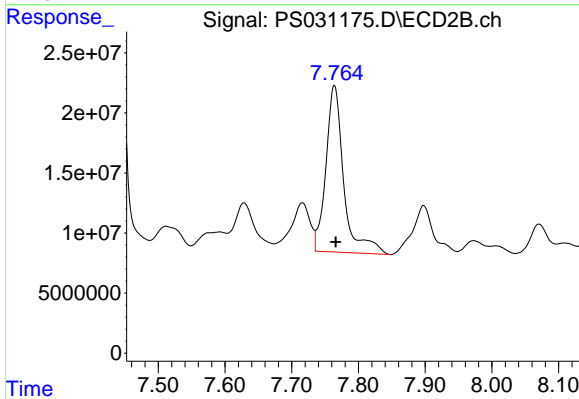
#3 4-Nitrophenol

R.T.: 7.290 min
 Delta R.T.: -0.009 min
 Response: 33301088
 Conc: 18.41 ng/ml



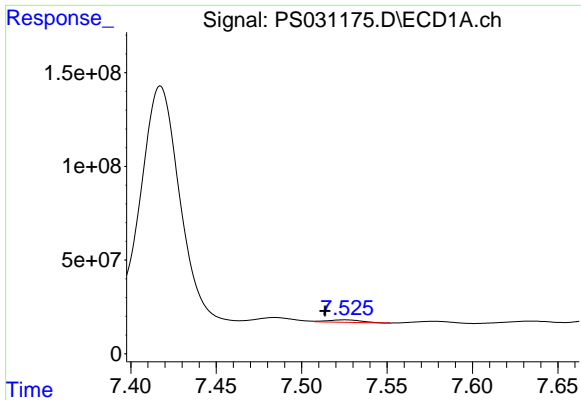
#4 2,4-DCAA

R.T.: 7.322 min
 Delta R.T.: -0.002 min
 Response: 716824375
 Conc: 164.85 ng/ml



#4 2,4-DCAA

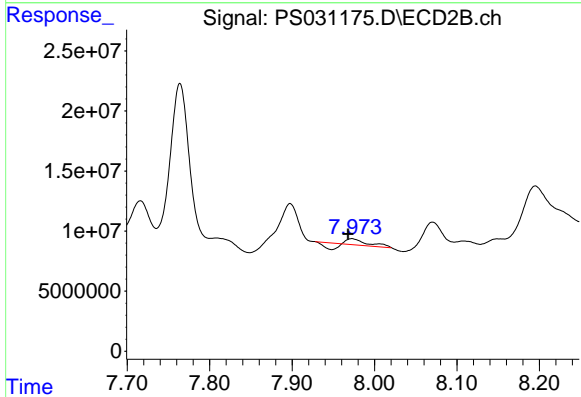
R.T.: 7.764 min
 Delta R.T.: -0.002 min
 Response: 258294053
 Conc: 254.48 ng/ml



#5 DICAMBA

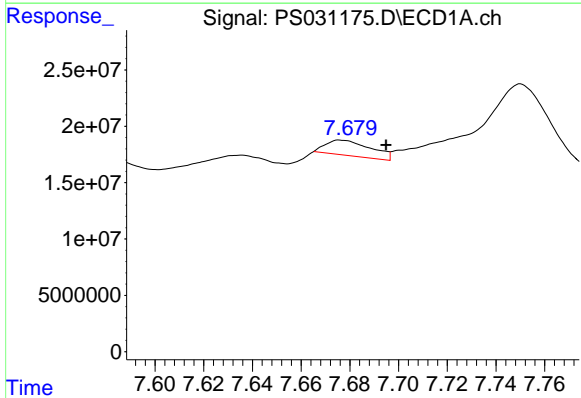
R.T.: 7.526 min
 Delta R.T.: 0.012 min
 Response: 17216744
 Conc: 1.04 ng/ml

Instrument :
 ECD_S
 ClientSampleId :
 OU4-TS-29-070925



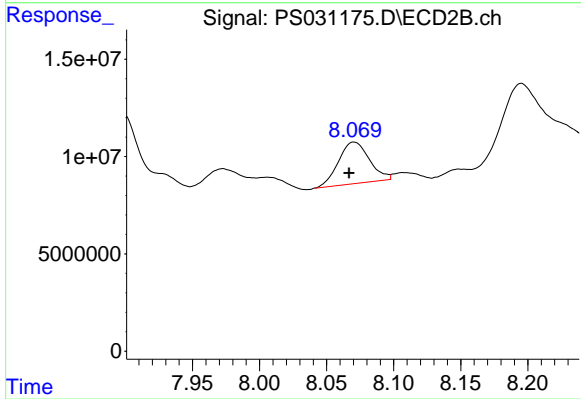
#5 DICAMBA

R.T.: 7.973 min
 Delta R.T.: 0.005 min
 Response: 2354748
 Conc: N.D.



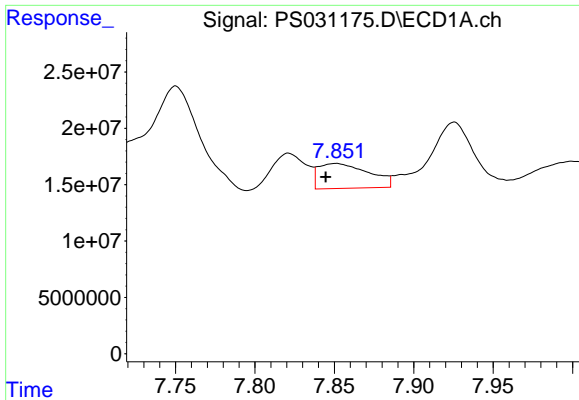
#6 MCP

R.T.: 7.676 min
 Delta R.T.: -0.019 min
 Response: 17500420
 Conc: 1.75 ug/ml



#6 MCP

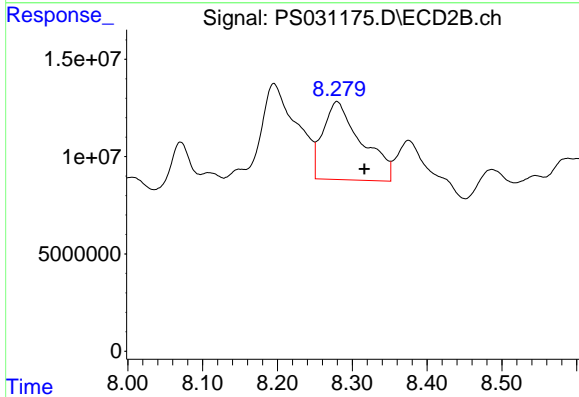
R.T.: 8.071 min
 Delta R.T.: 0.004 min
 Response: 34225576
 Conc: 16.47 ug/ml



#7 MCPA

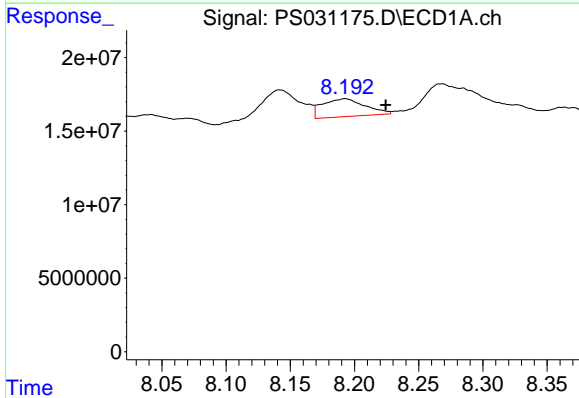
R.T.: 7.851 min
 Delta R.T.: 0.006 min
 Response: 48683645
 Conc: 3.89 ug/ml

Instrument :
 ECD_S
 ClientSampleId :
 OU4-TS-29-070925



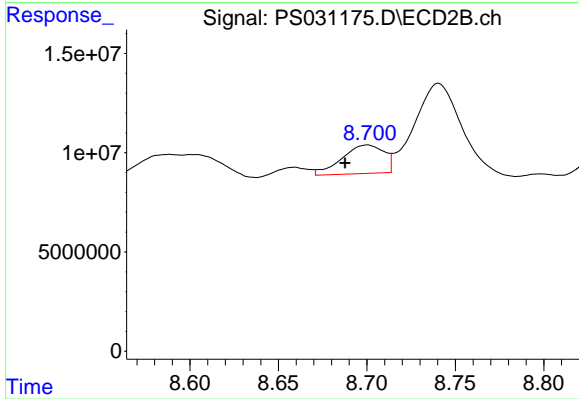
#7 MCPA

R.T.: 8.280 min
 Delta R.T.: -0.037 min
 Response: 143912276
 Conc: 45.61 ug/ml



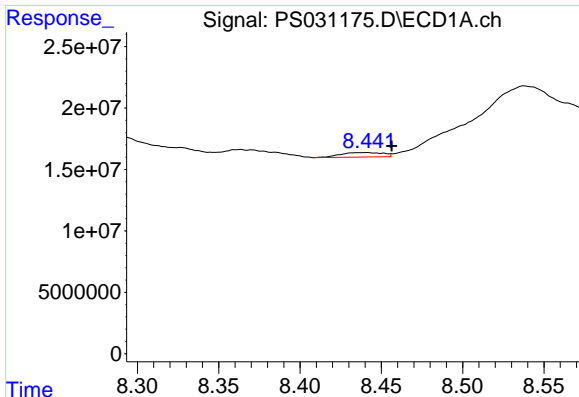
#8 DICHLORPROP

R.T.: 8.193 min
 Delta R.T.: -0.032 min
 Response: 28212885
 Conc: 7.38 ng/ml



#8 DICHLORPROP

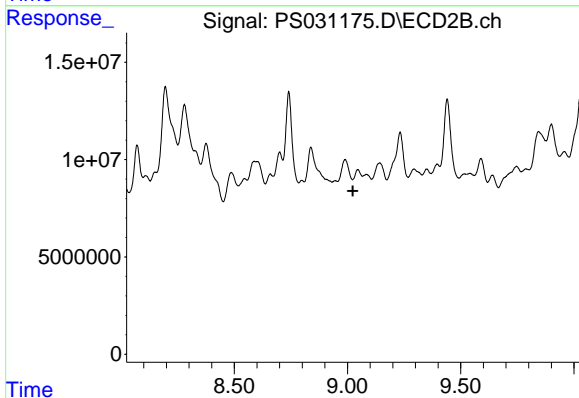
R.T.: 8.700 min
 Delta R.T.: 0.012 min
 Response: 23865059
 Conc: 15.75 ng/ml



#9 2,4-D

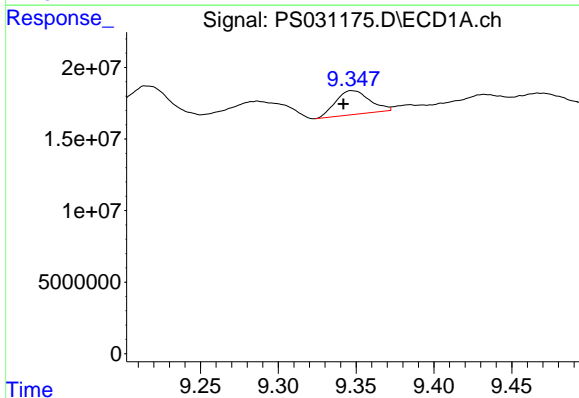
R.T.: 8.440 min
 Delta R.T.: -0.016 min
 Response: 6707983
 Conc: 1.80 ng/ml

Instrument :
 ECD_S
 ClientSampleId :
 OU4-TS-29-070925



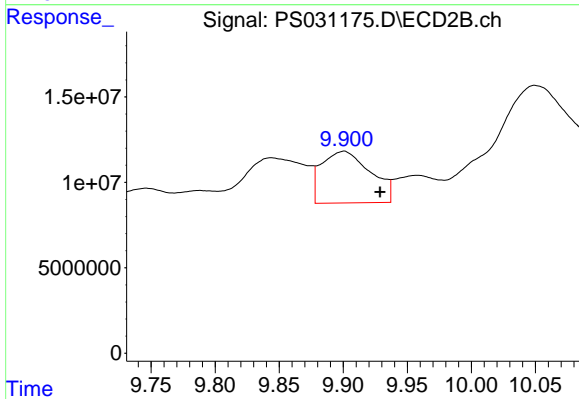
#9 2,4-D

R.T.: 9.046 min
 Delta R.T.: 0.022 min
 Response: -3664720
 Conc: N.D.



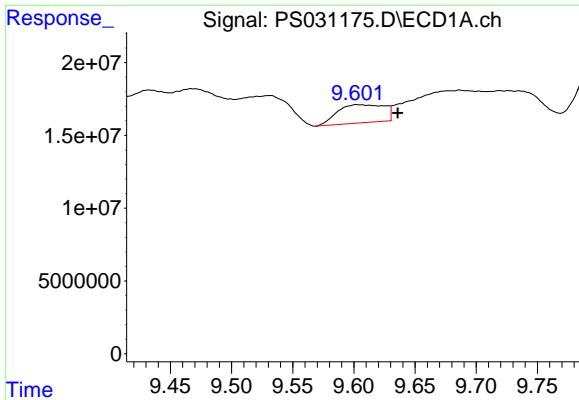
#11 2,4,5-TP (SILVEX)

R.T.: 9.347 min
 Delta R.T.: 0.006 min
 Response: 25477045
 Conc: 1.16 ng/ml



#11 2,4,5-TP (SILVEX)

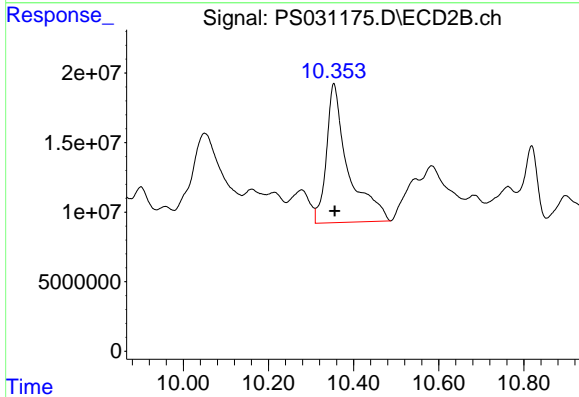
R.T.: 9.900 min
 Delta R.T.: -0.029 min
 Response: 80458891
 Conc: 5.40 ng/ml



#12 2,4,5-T

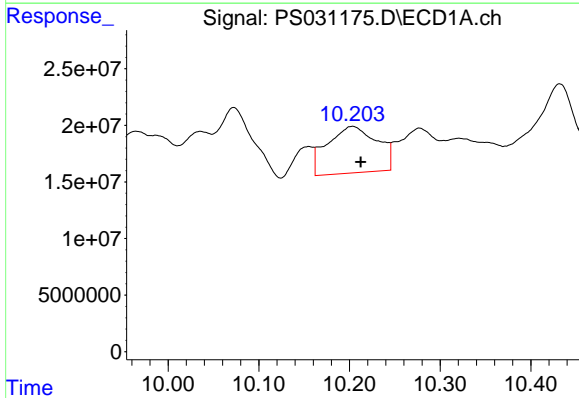
R.T.: 9.602 min
 Delta R.T.: -0.034 min
 Response: 33476905
 Conc: 1.71 ng/ml

Instrument :
 ECD_S
 ClientSampleId :
 OU4-TS-29-070925



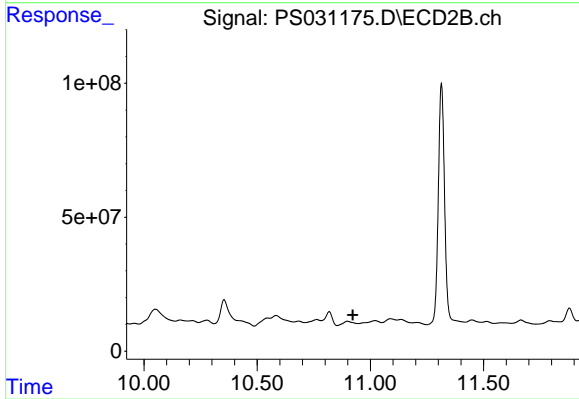
#12 2,4,5-T

R.T.: 10.354 min
 Delta R.T.: -0.002 min
 Response: 353551961
 Conc: 24.86 ng/ml



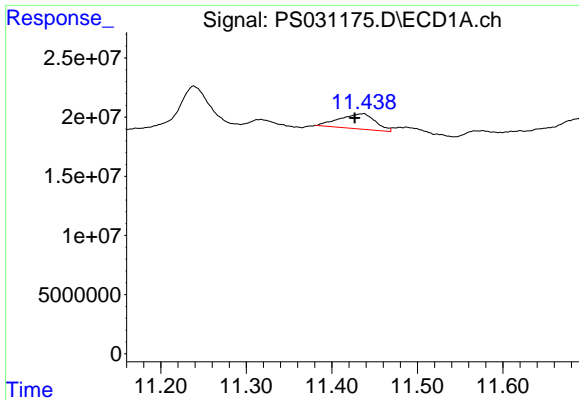
#13 2,4-DB

R.T.: 10.203 min
 Delta R.T.: -0.009 min
 Response: 156998867
 Conc: 52.51 ng/ml



#13 2,4-DB

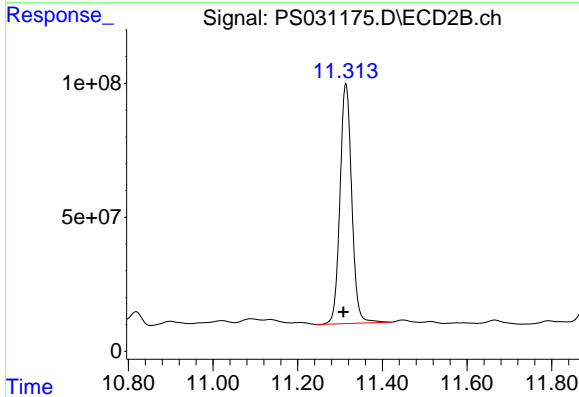
R.T.: 10.898 min
 Delta R.T.: -0.025 min
 Response: -61076646
 Conc: N.D.



#14 DINOSEB

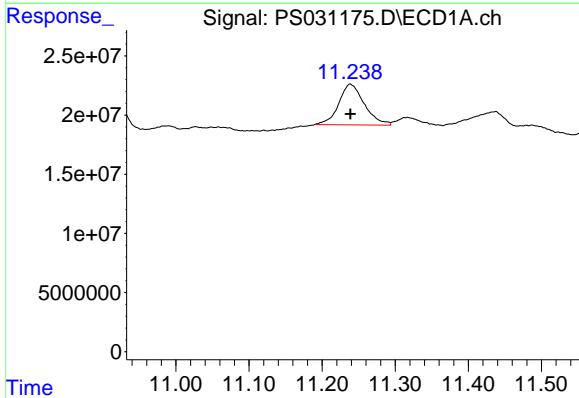
R.T.: 11.437 min
 Delta R.T.: 0.011 min
 Response: 37338025
 Conc: 2.40 ng/ml

Instrument :
 ECD_S
 ClientSampleId :
 OU4-TS-29-070925



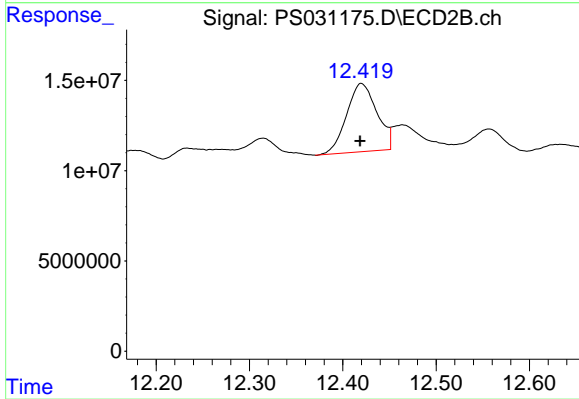
#14 DINOSEB

R.T.: 11.314 min
 Delta R.T.: 0.006 min
 Response: 1723095850
 Conc: 152.46 ng/ml



#15 Picloram

R.T.: 11.238 min
 Delta R.T.: 0.000 min
 Response: 83793646
 Conc: 4.19 ng/ml



#15 Picloram

R.T.: 12.420 min
 Delta R.T.: 0.001 min
 Response: 85279444
 Conc: 3.43 ng/ml