

Data Path : Z:\pestpcbsrv\HPCHEM1\ECD\_S\Data\PS072225\  
 Data File : PS031176.D  
 Signal(s) : Signal #1: ECD1A.ch Signal #2: ECD2B.ch  
 Acq On : 22 Jul 2025 14:52  
 Operator : AR\AJ  
 Sample : I.BLK  
 Misc :  
 ALS Vial : 2 Sample Multiplier: 1

Instrument :  
 ECD\_S  
 ClientSampleId :  
 I.BLK

Integration File signal 1: autoint1.e  
 Integration File signal 2: autoint2.e  
 Quant Time: Jul 23 01:54:28 2025  
 Quant Method : Z:\pestpcbsrv\HPCHEM1\ECD\_S\Method\PS072125.M  
 Quant Title : 8080.M  
 QLast Update : Tue Jul 22 03:18:42 2025  
 Response via : Initial Calibration  
 Integrator: ChemStation

Volume Inj. : 1 µl  
 Signal #1 Phase : ZB-MR2 Signal #2 Phase: ZB-MR2  
 Signal #1 Info : 30M x 0.32mm x0.5 Signal #2 Info : 30M x 0.32mm x 0.25µm

Compound	RT#1	RT#2	Resp#1	Resp#2	ng/ml	ng/ml
-----						
System Monitoring Compounds						
4) S 2,4-DCAA	7.325	7.763	1814.4E6	502.4E6	417.264	494.977
Target Compounds						
1) T Dalapon	2.740f	2.739f	37050450	61991558	5.906	21.853 #
2) T 3,5-DICHL...	6.480	0.000	11332588	0	2.052	N.D. #
3) T 4-Nitroph...	7.116	0.000	10125087	0	6.141	N.D. #
5) T DICAMBA	7.514	0.000	559209	0	<MDL	N.D. #
6) T MCPP	7.653f	0.000	128137	0	<MDL	N.D. #
7) T MCPA	7.866	0.000	593092	0	<MDL	N.D. #
8) T DICHLORPROP	8.248	0.000	128762	0	<MDL	N.D. #
9) T 2,4-D	8.461	0.000	211.4E6	0	56.604	N.D. #
10) T Pentachlo...	8.763	9.544	7019333	6774536	<MDL	<MDL #
11) T 2,4,5-TP ...	9.341	9.926	8593240	4848282	<MDL	<MDL #
12) T 2,4,5-T	9.637	10.363	3214431	4715921	<MDL	<MDL #
13) T 2,4-DB	10.215	10.968f	1698415	15779161	<MDL	13.481 #
14) T DINOSEB	11.434	11.305	5003116	2104265	<MDL	<MDL #
15) T Picloram	11.246	12.436	11452373	14090827	<MDL	<MDL #
16) T DCPA	11.726	12.356	6784000	2714494	<MDL	<MDL #

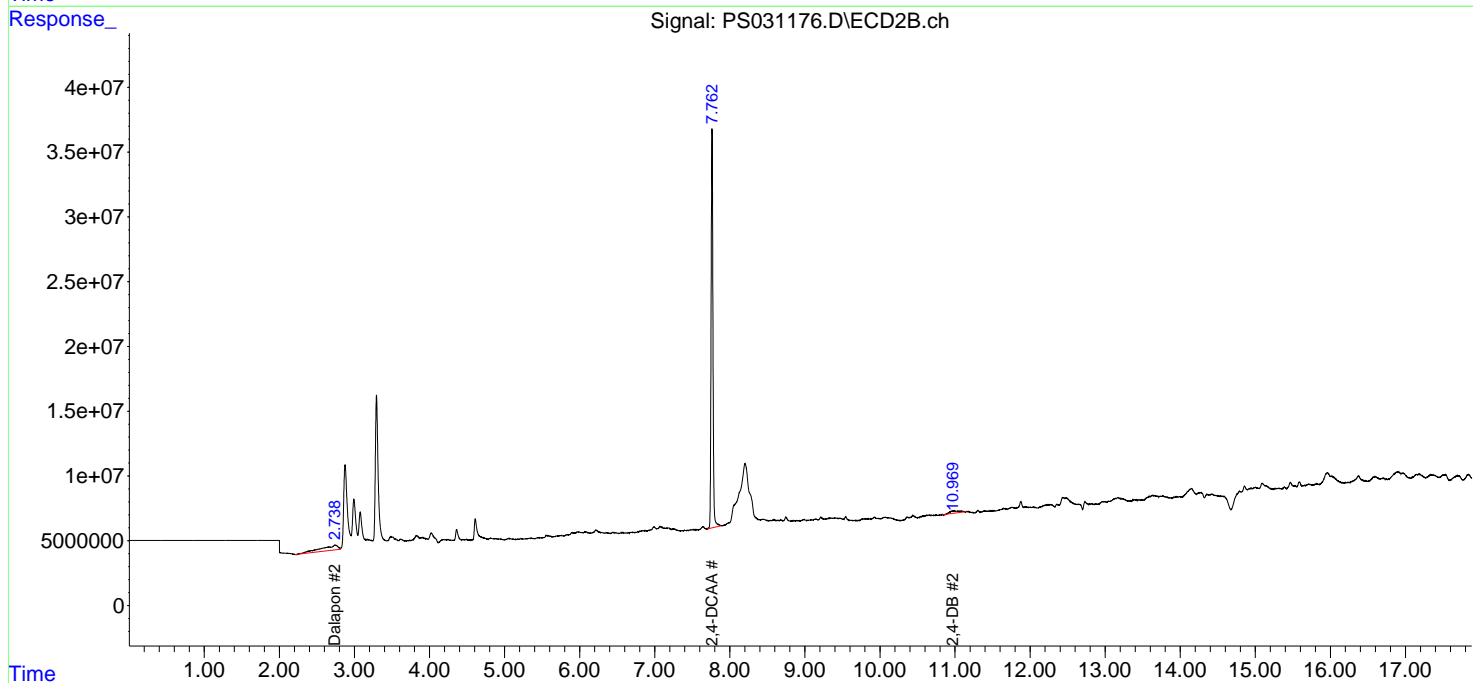
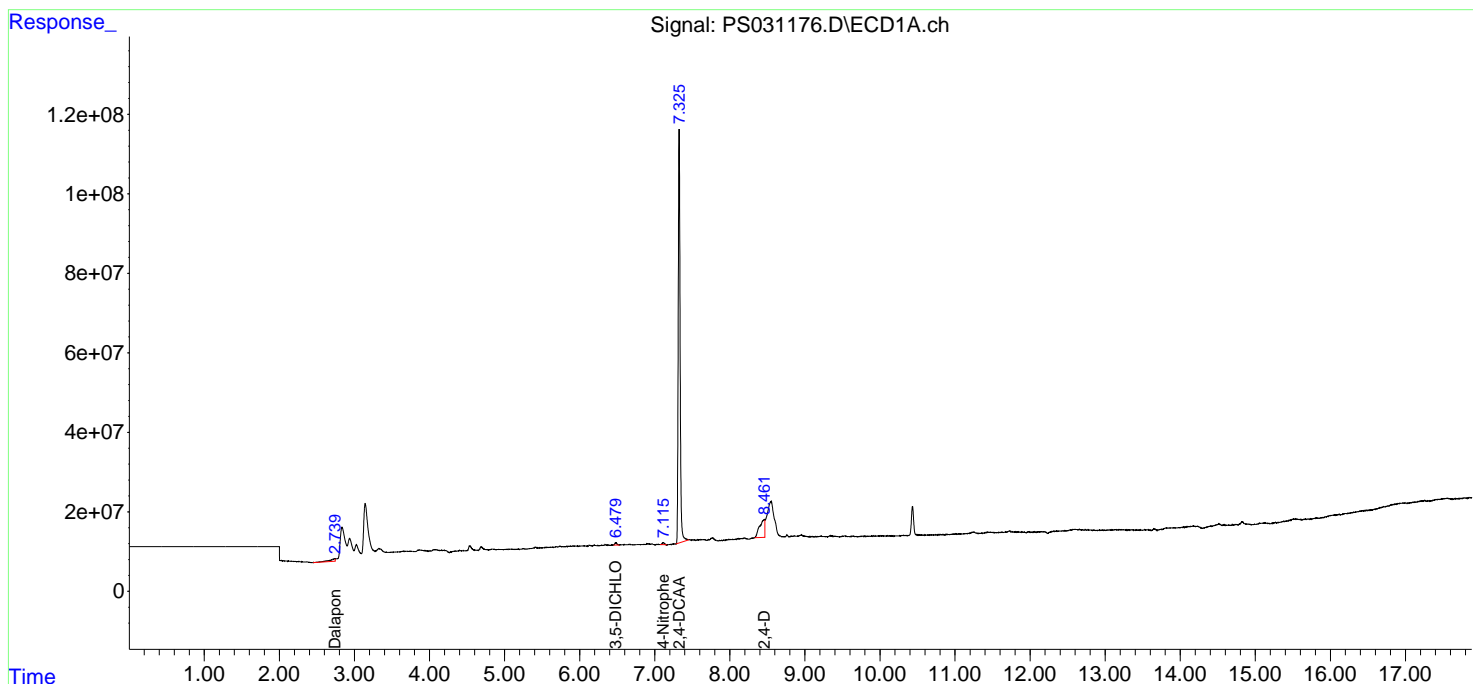
(f)=RT Delta > 1/2 Window (#)=Amounts differ by > 25% (m)=manual int.

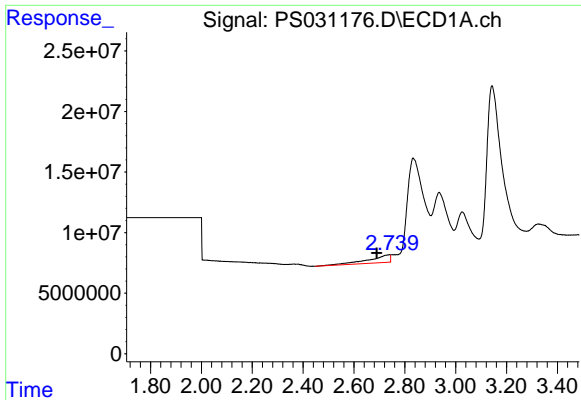
Data Path : Z:\pestpcbsrv\HPCHEM1\ECD\_S\Data\PS072225\  
 Data File : PS031176.D  
 Signal(s) : Signal #1: ECD1A.ch Signal #2: ECD2B.ch  
 Acq On : 22 Jul 2025 14:52  
 Operator : AR\AJ  
 Sample : I.BLK  
 Misc :  
 ALS Vial : 2 Sample Multiplier: 1

Instrument :  
 ECD\_S  
 ClientSampleId :  
 I.BLK

Integration File signal 1: autoint1.e  
 Integration File signal 2: autoint2.e  
 Quant Time: Jul 23 01:54:28 2025  
 Quant Method : Z:\pestpcbsrv\HPCHEM1\ECD\_S\Method\PS072125.M  
 Quant Title : 8080.M  
 QLast Update : Tue Jul 22 03:18:42 2025  
 Response via : Initial Calibration  
 Integrator: ChemStation

Volume Inj. : 1 µl  
 Signal #1 Phase : ZB-MR1 Signal #2 Phase: ZB-MR2  
 Signal #1 Info : 30M x 0.32mm x0.5 Signal #2 Info : 30M x 0.32mm x 0.25µm

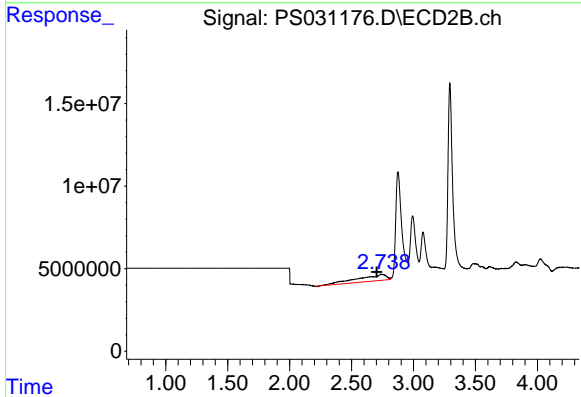




#1 Dalapon

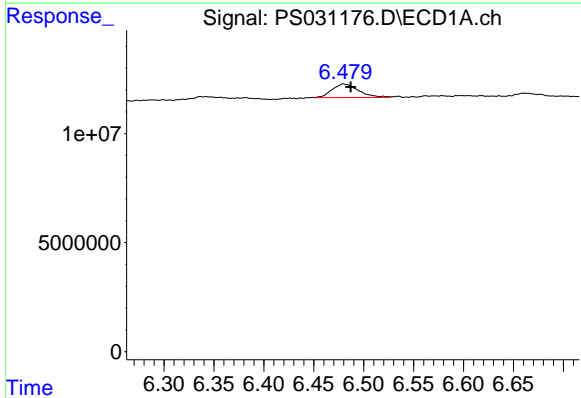
R.T.: 2.740 min  
 Delta R.T.: 0.050 min  
 Response: 37050450  
 Conc: 5.91 ng/ml

Instrument : ECD\_S  
 ClientSampleId : I.BLK



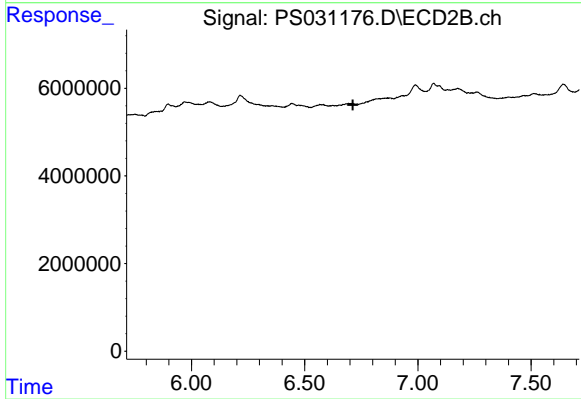
#1 Dalapon

R.T.: 2.739 min  
 Delta R.T.: 0.035 min  
 Response: 61991558  
 Conc: 21.85 ng/ml



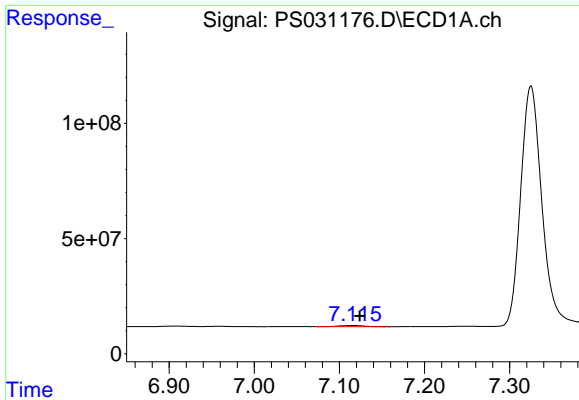
#2 3,5-DICHLOROBENZOIC ACID

R.T.: 6.480 min  
 Delta R.T.: -0.007 min  
 Response: 11332588  
 Conc: 2.05 ng/ml



#2 3,5-DICHLOROBENZOIC ACID

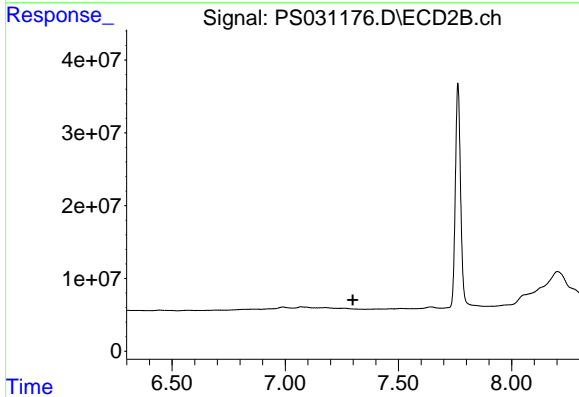
R.T.: 0.000 min  
 Exp R.T.: 6.713 min  
 Response: 0  
 Conc: N.D.



#3 4-Nitrophenol

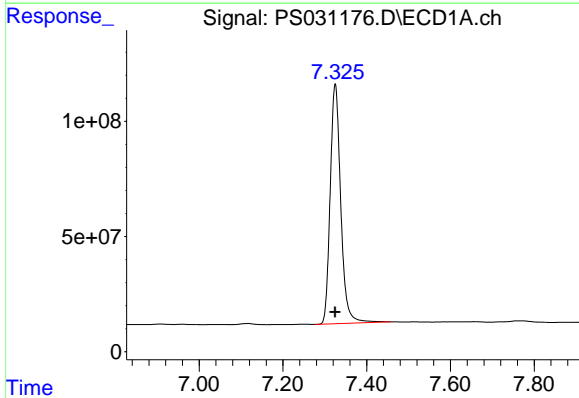
R.T.: 7.116 min  
 Delta R.T.: -0.008 min  
 Response: 10125087  
 Conc: 6.14 ng/ml

Instrument :  
 ECD\_S  
 ClientSampleId :  
 I.BLK



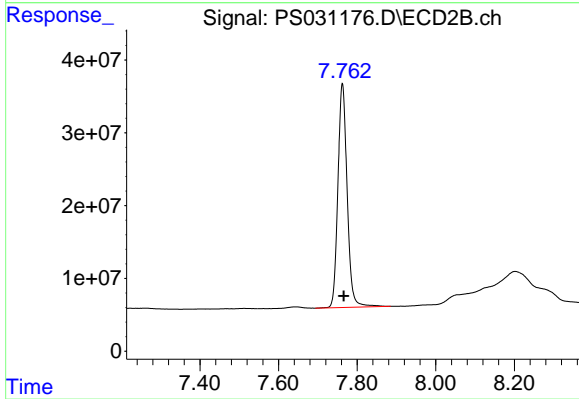
#3 4-Nitrophenol

R.T.: 0.000 min  
 Exp R.T. : 7.299 min  
 Response: 0  
 Conc: N.D.



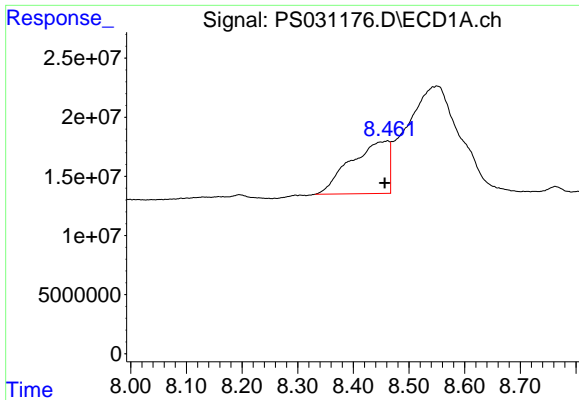
#4 2,4-DCAA

R.T.: 7.325 min  
 Delta R.T.: 0.000 min  
 Response: 1814370967  
 Conc: 417.26 ng/ml



#4 2,4-DCAA

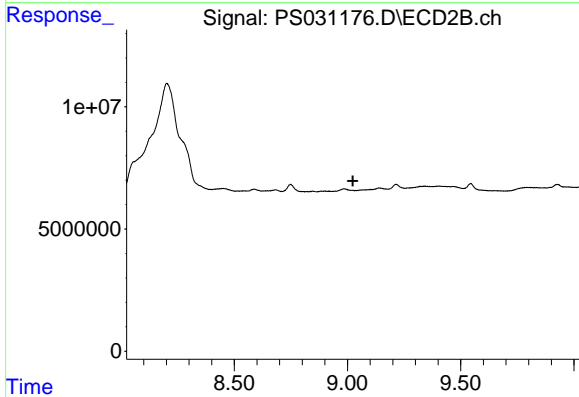
R.T.: 7.763 min  
 Delta R.T.: -0.003 min  
 Response: 502386049  
 Conc: 494.98 ng/ml



#9 2,4-D

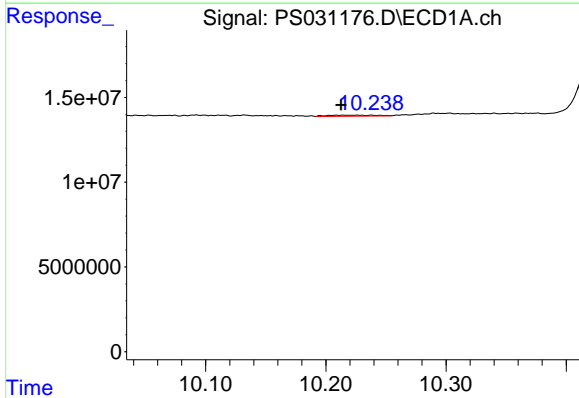
R.T.: 8.461 min  
 Delta R.T.: 0.005 min  
 Response: 211410568  
 Conc: 56.60 ng/ml

Instrument :  
 ECD\_S  
 ClientSampleId :  
 I.BLK



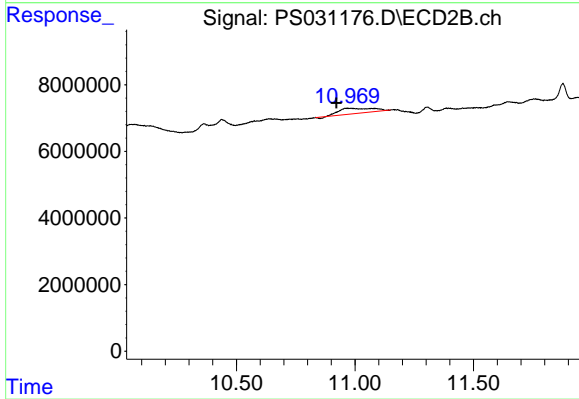
#9 2,4-D

R.T.: 0.000 min  
 Exp R.T. : 9.024 min  
 Response: 0  
 Conc: N.D.



#13 2,4-DB

R.T.: 10.215 min  
 Delta R.T.: 0.003 min  
 Response: 1698415  
 Conc: N.D.



#13 2,4-DB

R.T.: 10.968 min  
 Delta R.T.: 0.045 min  
 Response: 15779161  
 Conc: 13.48 ng/ml